

# Materials for construction

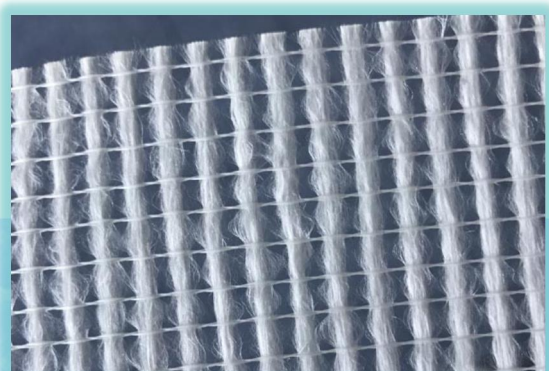
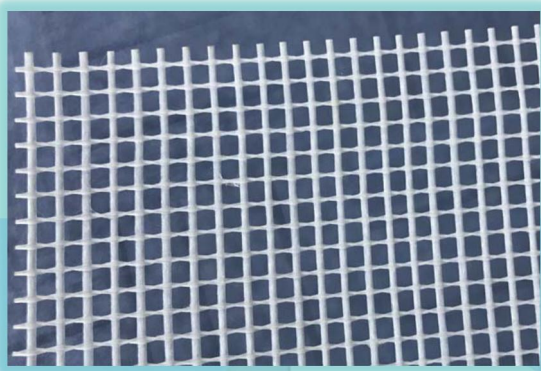
---



- ❖ MESH&SCRIM
- ❖ CLOTH
- ❖ WEAVE SETTING CLOTH
- ❖ FOIL CLOTH
- ❖ NON WOVEN TISSUE
- ❖ INSULFEX-AEROGEL

# Fiberglass mesh&scrim

Fiberglass mesh&scrim is made by C glass fiber or AR glass fiber leno/Plain weaved and impregnated by alkali resistance latex. It is idea material for wall stucco, asphalt felt support.



**Main application to**

- Wall insulation system
- Lamination
- Mosaic
- Marble

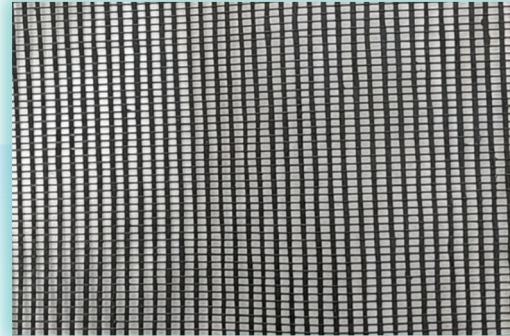
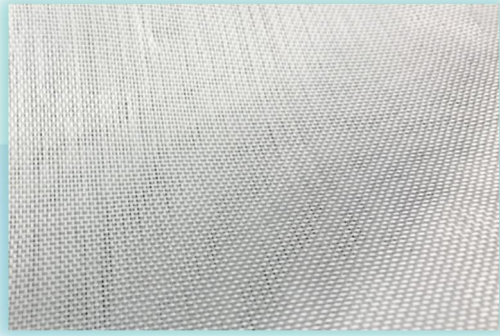
**Available specification**

ITEM	Yarn, tex		Mesh size		Binder content, %	Area weight, g/m2	Weave pattern	
	Warp	Weft	Warp	Weft				
FM-45	33*2	66	2.5*2.5		18	45	Leno	
FM-60	45*2	200			18	60		
FM-75	66*2	200			4*4	18		75
FM-110	100*2	250			5*4	18		110
FM-125	134*2	250			5*5	18		125
FM-135	134*2	300			9*7	18		135
FM-145	134*2	375			10*10	18		145
FM-160	134*2	400			12*12	18		160
BC60	34	68	20x10		14	60	Plain	
BC60	34	34	20x20		14	60	Plain	
ASPHALTC60	34	68	20X10		14	80	Plain	
ASPHALTC60	34	34	20X20		14	70	Plain	

1.Adhesive tape can be backed as request  
 2.Color can be customized

# Fiberglass cloth

Fiberglass construction cloth is made by C glass fiber yarn with plain or satin weaved. It has great chemical resistance and economic cost. The fiber yarn is finished with silane (resins compatible) or paraffin.



## Application to

- FRP reinforcement
- Asphalt felt support
- GRC&GRG reinforcement
- Flame retarded insulation wrapping

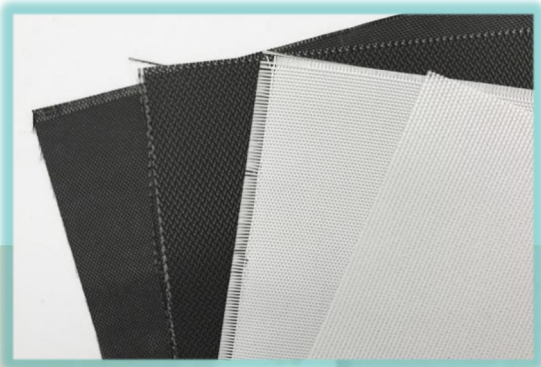
## Available specification

ITEM	Yarn density, ends/cm		Thickness, mm	Area weight, g/m <sup>2</sup>	Weave pattern
	Warp	Weft			
C100ECO	8	6.5	0.10	100	Plain
C130ECO	6.5	4.8	0.13	130	Plain
C140ECO	12	8	0.14	140	Plain
C150ECO	9	6.5	0.15	150	Plain
C180ECO	9±2	8±2	0.18	180	Plain
C200ECO	10	9	0.20	200	Plain
C200ECO-B	16	13	0.20	200	Plain
C260AECO	12	8	0.26	200	Plain
C260BECO	16	11	0.26	260	Plain
C280ECO	12	10	0.26	280	Plain
C385ECO	24	10	0.35	385	Satin

The yarn density can be adjusted according to request

# Weave setting fiberglass cloth

Weave setting fiberglass cloth is also called weave lock fiberglass cloth. It is finished with flame retarded and fiber non slipped excellent to fabrication. The cloth is finished with flame retarded. Glossy side finish can be made as request



**Application to**

- Mineral wool lamination or facing
- Ceiling board facing

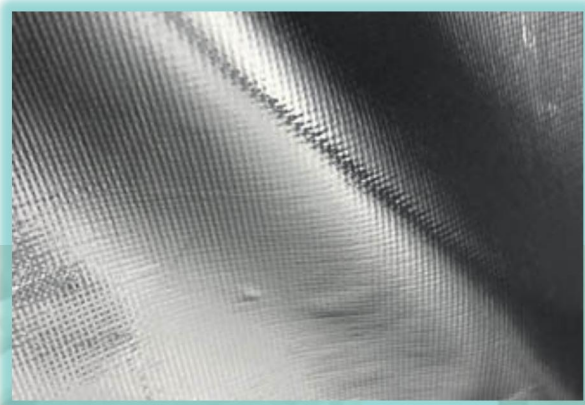
**Available specification**

ITEM	Yarn density, ends/cm		Thickness, mm	Area weight, g/m2	Weave pattern
	Warp	Weft			
C96	14.5	7.0	0.10	96	Plain
2116	23.6	22.8	0.09	106	Plain
C125	10.0	10.0	0.12	130	Plain
1506	18.5	18.1	0.14	170	Plain
7628	17.3	13.1	0.19	205	Plain
3732	18.3	12.5	0.42	420	4H satin
C600C	14.5	14.5	0.60	600	Double plain
3784	18.5	13.5	0.85	840	8H Satin

The color of fabric be adjusted according to request

# Aluminum foil fiberglass cloth

Aluminum foil fiberglass cloth is a heat reflective glass cloth. It is finished with aluminum foil adhesived by flame retarded high temperature glue. It is an ideal material for thermal reflective, waterproof, wapor resistance facing.



### Application to

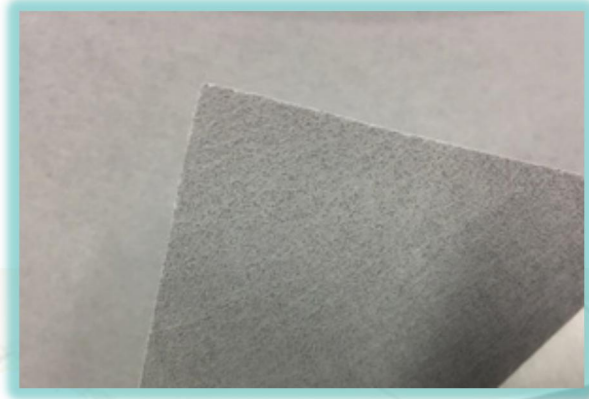
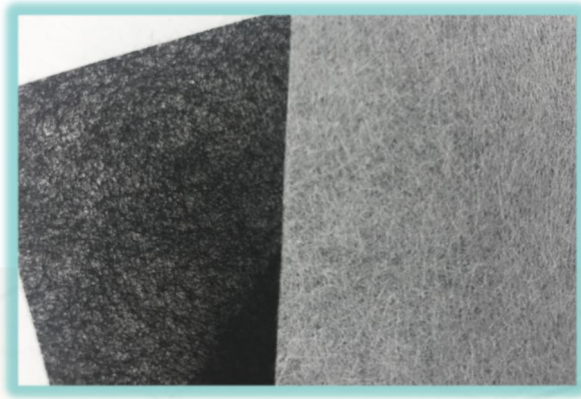
Mineral wool lamination or facing; Thermal reflective wrapping, covers; Sewn blankets

### Available specification

ITEM	Yarn density, ends/cm		Thickness, mm	Foil thickness	Area weight, g/m2	Weave pattern
	Warp	Weft				
ALC110	10	9	0.10	7um/18um	110	Plain
ALC110M	10	9	0.10	PES film	110	Plain
ALC200	17	13	0.20	7um	230	Plain
ALC200HT	17	13	0.20	18um	250	Plain
ALC200M	17	13	0.20	PES film	250	Plain
ALC400	18	12	0.40	14um/18um	470	4H stain
ALC400M	18	12	0.40	PES film	480	4H stain
ALC600C	14.5	14.5	0.60	14um/18um	650	Square

# Non woven for lamination

Non woven fiberglass tissue can provide a flame retarded layer for short fiber protecting. The tissue can also be PE hot melt adhesive backed or cement coated, point spray.



### Application to

Mineral wool, PU foam acoustic board lamination; Facing material; Acoustic ceiling board

### Available specification

ITEM	Binder,%	Area weight, g/m <sup>2</sup>	Longitudinal tensile strength, N/50mm	Horizontal tensile strength, N/50mm
LM-55	≤25	55	≥120	≥60
LM-60	≤25	60	≥150	≥75
LM-120	≤25	120	≥250	≥150
LM-60AD	≤18	85	≥150	≥75

- Can be made various colors and spray point
- Can be coated with cement



# Insuflex-aerogel

Insuflex-aerogel blanket is known as outstanding thermal insulation. Compared with conventional insulation material, Insuflex has higher insulation efficiency and thinner thickness.



### Application to

- Steam, LNG etc pipes
- Building insulation
- Automotive, train
- Subsea cable insulation

### Available specification

ITEM	Density, kg/m <sup>3</sup>	Thickness, mm	Temperature classification, °C	Thermal conductivity at 25°C, W/(M • K)
Insuflex200	200 ± 20	6	-200~200	≤0.016
Insuflex200	200 ± 20	10	-200~200	≤0.016
Insuflex400	180 ± 20	3	-50~400	≤0.018
Insuflex400	180 ± 20	6	-50~400	≤0.018
Insuflex400B	250 ± 20	3(2.5)	-50~400	≤0.020
Insuflex650	200 ± 20	3	-50~650	≤0.020
Insuflex650	200 ± 20	6	-50~650	≤0.020
Insuflex650	200 ± 20	10	-50~650	≤0.020
Insuflex1000	220 ± 20	10	-50~1000	≤0.020