



SINCE 2003

DOOR

**SHANGHAI
XUNZHONG
INDUSTRY
CO.,LTD**



Website: www.ulfiredoormfg.com
Address: Room C,FL 2,No.2633 Hunan Road,
Pudong New District, Shanghai City, China
Tel: 0086-21-20961002
Fax: 0086-21-20961002
E-mail: info@ulfiredoormfg.com



COMPANY INTRODUCTION

Shanghai Xunzhong Industry Co., Ltd is a leading professional manufacturer of fire door&window and other special doors, located in the international metropolis -Shanghai, established in 2003.

Our Enterprise has more than 15 years experience with two production bases located in Shanghai and Jiangsu province, annual production capacity could reach 1 million sets of door Main products cover UL&CE fire door&fire window, explosion proof door, sound proof door,hospital door, clean room door and other special door.

Benefit from advanced technique and efficient international marketing exploration. Xunzhong has gained good reputation as reliable partner in over 50 countries and regions such as North America, Europe, Australia, South America, Middle East, South Asia , Southeast Aisa,etc.

Xunzhong Products constantly strive to provide professional doors solution by providing premium products at competitive prices. Complete range of production line can meet different requirement from various customers. We sincerely hope to establish lasting business relationships with customers worldwide.

CONTENTS

The logo for XZIG, featuring the letters 'XZIG' in a bold, sans-serif font. The 'X' and 'Z' are stacked vertically, with 'I' and 'G' to their right. A large dot is positioned to the right of the 'G'. The logo is rendered in a light gray color.

Steel Fire Door	3
Fire Door	7
Interior Door	9
credential	14
Industrial Folding Door	15
Industrial Sliding Door	16
Other Hardware	17

UL&EN FIRE DOOR



XZ-DSF-1

XunZhong fire door meets and exceeds UL/EN/BS standard, complying these criteria as UL 10B, UL10C,, EN-1634-1, BS-476-22. Doors are with UL/EN certificate.UL/EN/BS 20 minutes up to 3 hours fire rating Available with fire proof glazing and top light Widely applied to Industrial, Commercial, Chemical, Nuclear and Medical Industries.

Frame

Various kinds design of frame profiles are available, suitable for different installation environment.

Hardware Available

UL/Non-UL panic bar, external level trim, door closer, hinge, flush bolt, vision glass, magnetic door holder, coordinator, smoke seal, handle lock, automatic door bottom seal etc.

Option

Door and frame surface finish could be customized according to RAL color chart.

UL&EN STEEL FIRE DOOR



XZ-DSF-2

Certified with UL/EN/BS

20 minutes up to 3 hours fire rating

Single Door customized max size: 4*8 feet

Available with fire-proof window

Certified with UL/EN/BS

20 minutes up to 3 hours fire rating

Double Door customized max size: 8*8 feet

Available with fire-proof window



XZ-SSF-1

UL&EN STEEL FIRE DOOR   



XZ-SSF-2

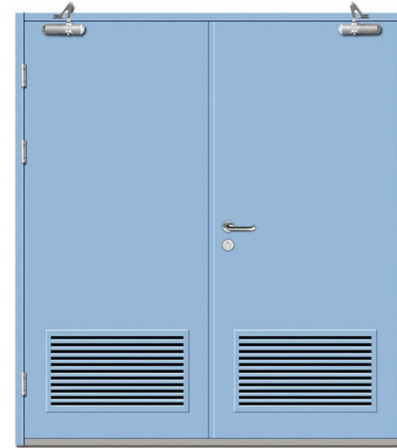
Certified with UL/EN/BS
20 minutes up to 3 hours fire rating
Single Door customized max Size: 4*8 feet
Available with handle lock

Certified with UL/EN/BS
20 minutes up to 3 hours fire rating
Single Door customized max size: 4*8 feet
Available with press bar



XZ-SSF-3

UL&EN STEEL FIRE DOOR   



XZ-DSF-3

Certified with UL/EN/BS
20 minutes up to 3 hours fire rating
Double Door customized Max Size: 8*8 feet
Available with fire proof louver
Available with handle lock

Certified with UL/EN/BS
20 minutes up to 3 hours fire rating
Single Door customized Max Size: 4*8 feet
Available with louver
Available with handle lock



XZ-SSF-4

FIRE DOOR CROSS SECTION VIEW



STEEL DOOR SKIN:

16GA(1.5mm),18GA(1.1mm),20GA(0.9mm)
A40 Galvanized Or Cold-rolled Steel Skins
Construction is 1-3/4" (45mm) Thickness

Hinge, closer, lock and strike plate reinforcements shall be provided.

Hinge reinforcement:10GA(3.5mm)

Closer reinforcement:12GA(2.5mm)

Lock reinforcement:16GA(1.5mm)

Strike plate reinforcement:16GA(1.5mm)

The top,bottom and side closures are fabricated from 16GA(1.5mm) thick channel shaped steel sections welded to the front and back door skins.

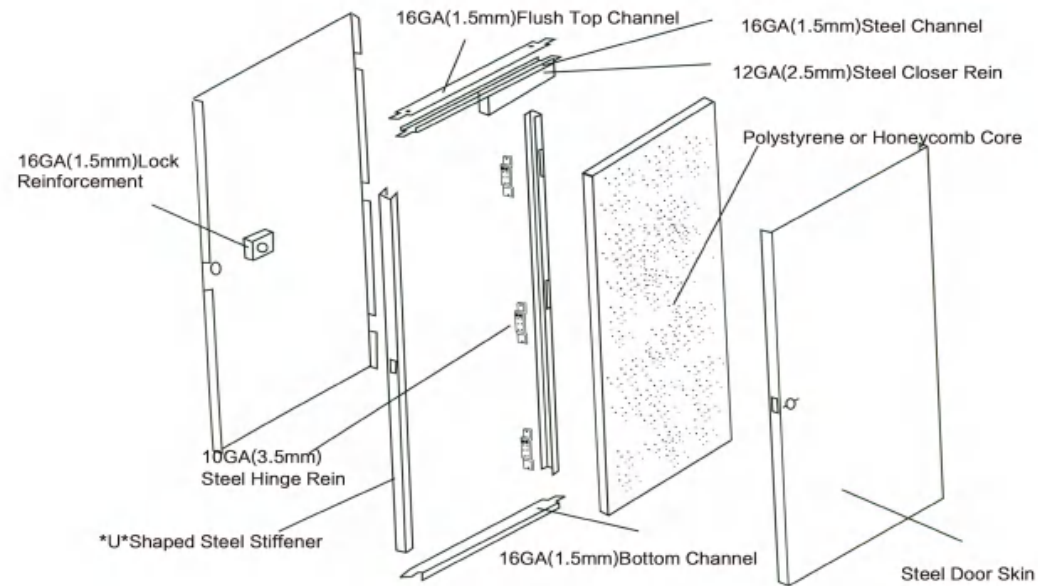
Flush top channel:16GA(1.5mm)

Laser-welded side-seamed edge.

Widths up to and including 4' 0"

Heights up to and including 8' 0"

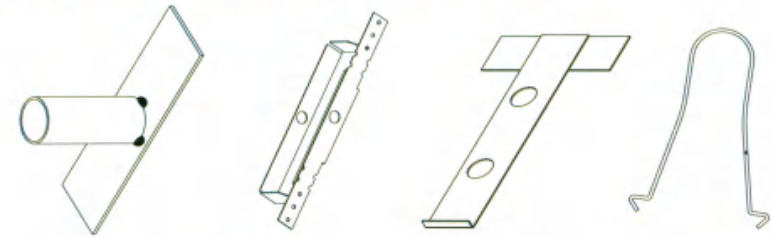
Available with polystyrene core or honeycomb core.



FIRE DOOR FRAME CONSTRUCTION VIEW



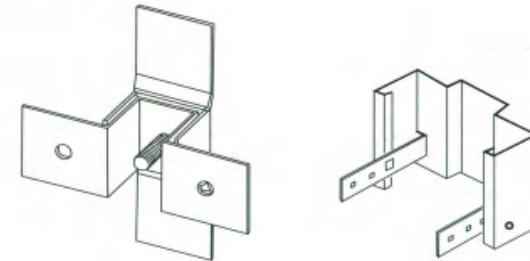
MASONRY/STUD CONSTRUCTION FRAME



Wire Anchor T Anchor Universal Anchor Tube Anchor

Jamb Depth	4-3/4"	5-3/4"	6-1/4"	6-3/4"	7-1/4"	7-3/4"	8-1/4"	8-3/4"	9-1/4"	10-1/4"
Throat Opening	3-3/4"	4-7/8"	5-1/4"	5-3/4"	6-1/4"	6-3/4"	7-1/4"	7-3/4"	8-1/4"	9-1/4"

DRYWALL FRAME



Compression Anchor Snap in sill Anchor

Jamb Depth	4-3/4"	5-7/8"	6-1/4"	6-5/8"	7-1/4"	7-3/4"	8-1/4"
Throat Opening	3-3/4"	4-7/8"	5-1/4"	5-5/8"	6-1/4"	6-3/4"	7-1/4"

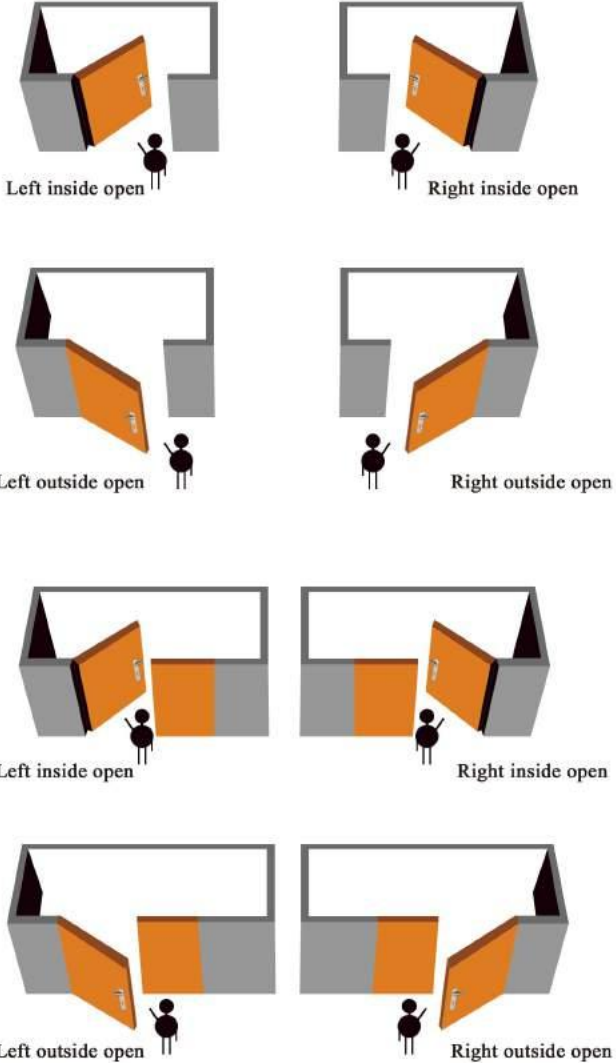
Frame Profiles



Xun zhong steel fire doors conform or exceed SDI/HMMA industrial standards, fire tested and certified with UL, Intertek/WH from 20Min up to 3hrs fire rating, complying criteria as NFPA252, UBC7-2, UL10(b), UL10(c)

OPEN DIRECTION INDICATOR

The direction of opening the door can be based on customer need



INTERIOR DOOR



INTERIOR DOOR



XZ-1



XZ-2



XZ-3

INTERIOR DOOR



XZ-4



XZ-5



XZ-6



XZ-7

PAINTED WOODEN DOOR



XZ-27



DOOR ARCHITRAVE TYPE



XZIC-A



XZIC-B



XZIC-C



XZIC-D



XZIC-E



XZIC-F

POPULAR STYLE



XZ-22



XZ-23



XZ-24



XZ-25



HOSPITAL DOOR SERIES



STEEL WARD DOOR



INDUSTRIAL CLEAN ROOM DOOR



INDUSTRIAL CLEAN ROOM DOOR



ROLLER SHUTTER DOOR



ROLLER SHUTTER DOOR



PANIC EXIT DEVICES SERIES



OTHER HARDWARE

