







## ABOUT

**Heartz Bangla** Established in the year of 2010 and **Heartz Bangla Ltd.** Established in the year of 2017 as an Incorporated and registered as Private Limited Company with the register of Joint Stock Companies of Bangladesh. With some Professionally skilled Engineers, Technicians & Technology in the Specific field.

We started business with Security System, fire fighting System, Industrial Power, Machinery Engineering Equipment's & Utility of Electrical and Mechanical Fabrication, Erection, Installation, Testing and Commissioning.

We has been engaged in the flowing field's of Business with the Brand's

1. Access control System (ANVIZ, USA)
2. Security Surveillance System (HIKVISION, USA & CAMPRO, TAIWAN)
3. Integrated Public Address System (AHUJA, INDIA)
4. Industrial & Laboratory Weighting Solution (CAS, KOREA)
5. Vehicle Weighting Scale (CAS, KOREA)
6. Addressable Fire Alarm System (GST, USA)
7. Automatic Sprinkler System (AYVAZ, TURKEY)
8. Fire Hydrant System (KOLLING, MALAYSIA)
9. Fire Pumping System (MAS-DAF, TURKEY)
10. Diesel & Gas Generator (CAT, MWM, WARTSILA, CUMMINS, PERKINS)

**Heartz Bangla Ltd.** Range of project experience encompasses all types of Industries and facilities, including :

<b>Housing</b>	<b>Office</b>	<b>Commercial</b>	<b>Institution</b>	<b>Garments</b>
<b>Textile</b>	<b>Industrial</b>	<b>Power Plant</b>	<b>Hospital</b>	<b>Agro Projects</b>
<b>Bank</b>	<b>Insurance</b>	<b>Pharmaceutical</b>	<b>Hotel</b>	<b>Mobile Operators</b>

Our mission to provide high quality and world class engineering solution with products to our clients with excellence and dedication in all aspects by creating a sustained and mutually beneficial relationship and gain the confidence of our valuable customers.

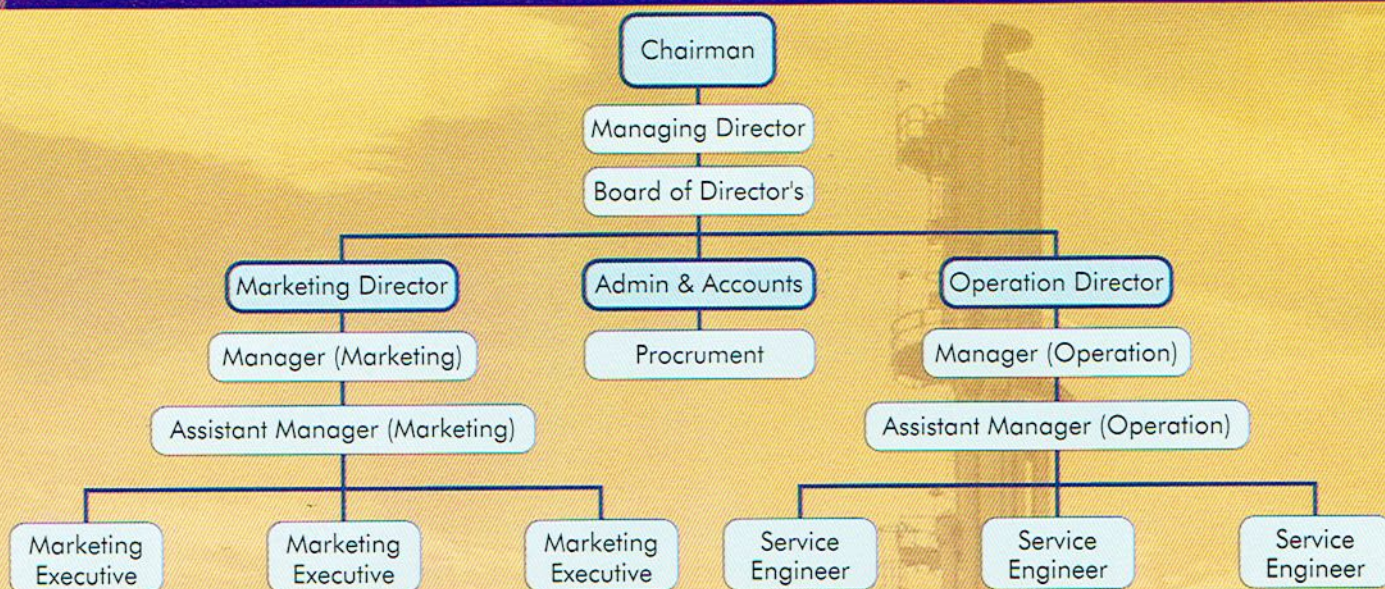
We always try to understand the basic requirement of clients which actually gives the satisfaction to clients. Our Business philosophy is that our clients will tell us i.e. Our clients is our messenger. To ensure professionalism in business we equipped skilled engineers reputed universities in Bangladesh.

Our aim to be the nations top go to resource sourcing, Supply of Only the highest quality Engineering Equipment's and proficient advisory service. To achieve Our objective, we are committed to ensuring the requirements of our customers are met with professional integrity, technical expertise and prompt delivery in all our service areas.

We are the best service provider in core field of engineering & technology around Bangladesh. we provide security System, fire fighting system, Industrial Power, Machinery, Engineering Equipment's & Utility products.



## BUSINESS ORGANOGRAM



## QUALITY

Even through our products are certified to have complied with the strictest international quality Standards, constant in home quality control is practiced to give our customers 100% assurance of quality. our products have the international quality and standards and approval.



## One - Stop Shop

There are not many engineering equipment suppliers carry a comprehensive product range at competitive price, But we do. All you need engineering equipment and services is under one roof. just one call to us for solving your needs.

## On - Time Delivery

We pride ourselves on ensuring that is required by our customers is delivered on time every time. Stock management is meticulously maintained at optimum level in order not to disappoint our customers. we shall be an innovative entrepreneurial and empowered team constantly creating value and attaining global benchmark. we endorse a service culture that fosters learning, individual growth, team spirit and creativity to overcome challenges and attain company goals.

## Our Vision

To be the leading trustful Engineering Equipment & service provider Bangladesh.



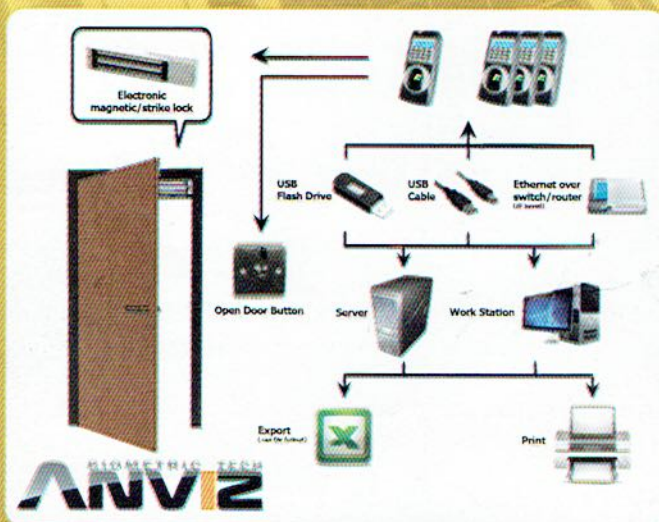


## ACCESS CONTROL & DOOR LOCK

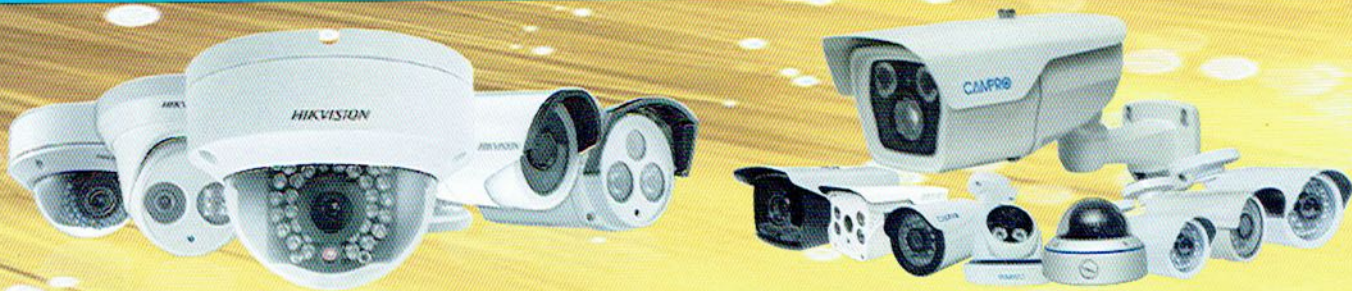


Anviz Global Inc., is a global pioneer in the intelligent security industry, including fields such as, Biometrics, RFID and Surveillance. Over the last 11 years we have dedicated ourselves to providing innovative, high-quality, cost-effective solutions to our customers in over 100 countries. Qnvent and Trustois the core concept in both our product development, and commitment to our customers. Anviz maintains offices worldwide, including R&D centers and regional branch offices throughout the Americas, South Africa, Asia, and Europe to further facilitate growth. Globally, there are nearly 1000 talented employees serving you. Anviz trademarks have been registered in 158 countries around the world.

Anviz has 11 years of R&D expertise in engineering and manufacturing biometric technology products and owns more than 500 intellectual properties in software, hardware, style & design. Anviz created and developed a self-intelligent, multi-biometric verification algorithm named BioNANO. Incorporating fingerprint, facial, iris and vein recognition in one core application, BioNANO has excelled over other competitors to become the world's most efficient and stable identification algorithm. Our constant R&D enhancements in multi-biometric and RFID technology continue to lead the industry in identification and security. The Bio NANO Algorithm is used daily by 60 million people all over the world. Anviz technology products and applications already span the globe and will continue to grow through our commitment and valued partners.







## IP & Analog CCTV Security Surveillance System

As the world's largest security manufacturer, hikvision has been a pioneer in the video surveillance industry's revolutions in digitalization, networking and intelligence. according to IHS report, Hikvision has topped the list as the world's largest supplier of CCTV & Video surveillance equipment for Five consecutive years (2011-2015), and retains the number one market Share Position in Virtually all individual Equipment categories, including Network Cameras analog and HD CCTV cameras, DVR/NVRs, and Video encoders.

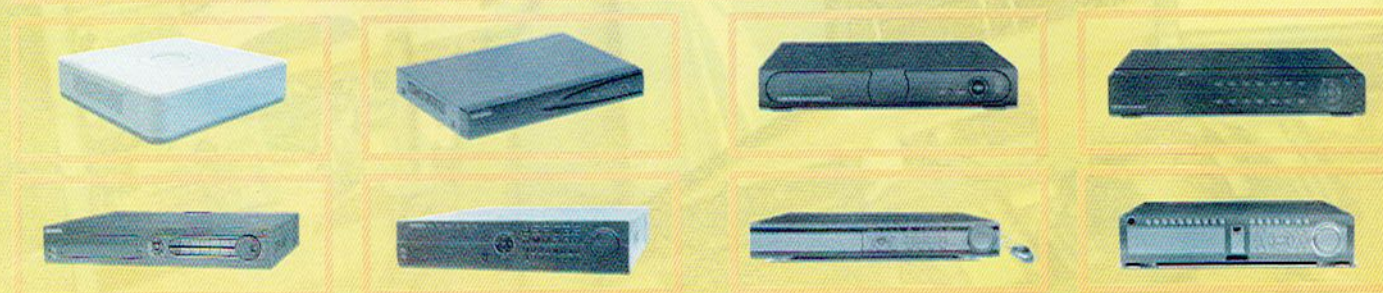
**Campro** CCTV is a professional manufacturer that specializes in the Research Development of CCTV products. CAMPRO CCTV with ISO 9001 quality certificate years of solid experience on global market which Provide state of the art CCTV equipment to satisfy your requirements completely and to meet the realities of budget constraint. CAMPRO brand from analog to digital solutions of any specialist manufacturers to fulfill all customers' requirements on CCTV surveillance.



**600 TVL to 5 MP IP & Analog, HD & AHD CCTV Camera**



**Hikvision & Campro High Speed Ultra-low Light Pan Tilt Zoom (PTZ) Camera**



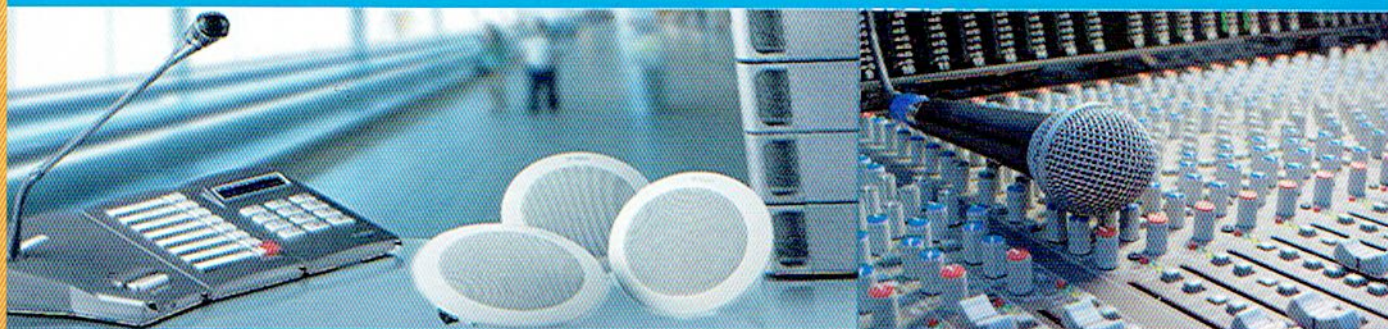
**4 Chanel to 32 Chanel High Speed Real Time DVR & NVR**

**HIKVISION**

**CAMPRO**







## Public Address (PA) System



AHUJA RADIOS is today India's leading manufacturer & exporter of Public Address Equipment. Established in 1940, in last 7 decades we have been able to cement AHUJA as the most trusted brand in sound reinforcement industry by introducing reliable products through continuous research & development. Right since the inception company has aspired and worked diligently towards offering wide range of products to fulfill every conceivable PA application requirement.

Ahuja Radios has always been the pioneer in the field of Public Address Systems in India and has invariably been at the forefront in leading the PA industry through changing times. Owing to this pro-active approach AHUJA today has become the preferred option for applications like announcements at public places, sound reinforcement at auditoriums / conference halls, seamless counter communication, crowd control etc.





## Portable Fire Extinguisher

Fire Extinguishers are active fire protection equipment, usually used in emergencies, for extinguishing small fires or for preventing them from spreading. They are generally hand-held cylinders that contain pressurised extinguishing agents which are released to fight a fire.

Portable Dry Powder Fire Extinguishers are handheld, multipurpose fire extinguishers which can be effectively used for Class A, B, C and E Fires.

ABC Powder, the dry chemical powder agent in these extinguishers, is a non-conductor of electricity and is not dangerous to humans or animals. This makes dry powder fire extinguishers the ideal equipment to use during dangerous mixed-class fires but their use should be avoided for fires which involve carbon disulfite and flammable metals such as magnesium and sodium (Class D fires).

### CLASSES OF FIRE

#### Class A

Ordinary combustible materials or organic solids such as paper, wood, cardboard and most plastics

#### Class B

Flammable or combustible liquids such as petrol kerosene, grease and oil

#### Class C

Flammable gases such as butane and propane

#### Class D

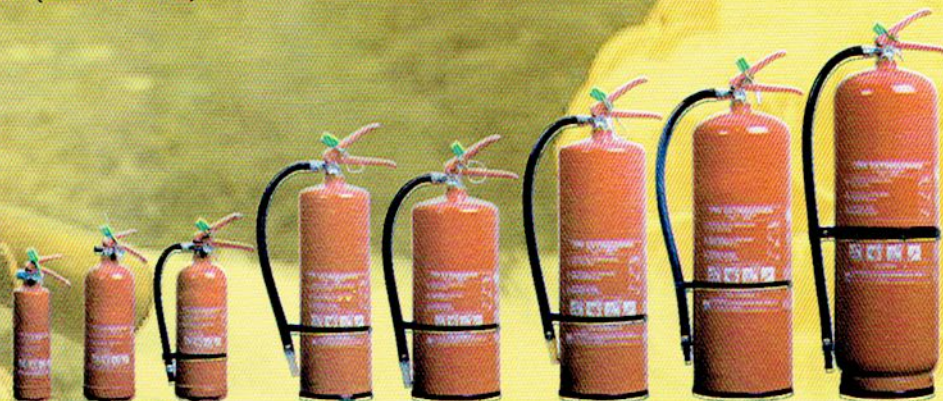
Combustible metals such as magnesium, titanium, potassium and sodium

#### Class E

Electrical Equipment such as appliances, wiring, circuit breakers and electrical outlets

#### Class F

Cooking fat, trans-fat and cooking oil



Foam fire extinguishers are effective against Class A and B fires. they contain the agent AFFF (Aqueous Film Forming Foam) which, when discharged, covers burning solids or flammable liquids with a blanket of foam. This cuts off the fire's oxygen supply, prevents any flammable vapour from escaping, and kills the fire.

Portable Carbon Dioxide Fire Extinguisher are suitable for extinguishing Class B and E fires. Since carbon dioxide is a non-flammable gas and is heavier than oxygen, it is used as an extinguishing agent by displacing oxygen from the surrounding area to starve and cool the fire.







## Conventional & Intelligent Fire Alarm System

GST, is a leader of fire and security industry and a trusted provider of comprehensive fire system solutions around the world. It is a unit of UTC United Technologies Corporation (USA) a high-tech innovator in the building solutions and aerospace industries with unmatched global reach. GST provides a complete range of fire products and customized fire system solutions tailored to the needs of different industries. GST has become an important part of UTC's global business. It constantly strives to develop innovative new technologies and products and add to its portfolio of patent-protected intelligent fire systems. GST is one of only a few companies to have earned a range of national and international certificates of conformity to standards such as CCCF, the global LPCB, Europe's CE and the international UL.



Standard: EN54 Part 2/4  
8 x Loops (242) capacity (1936) addressable points  
Maximum 10 Loops Standalone  
Modular constructed for future expansion



Single zone conventional fire panel  
Compact design  
Suitable for both Active and resistor end of line monitoring.



Standard: EN54 Part 2/4  
Loop capacity 477 intelligent devices  
30 logical configurable zones  
PAS and Acknowledge Function



2/4/8/16 zone conventional fire alarm panels  
Pleasing colour and fascia design  
Simplified user operation  
Both end of line resistor and active end of line can be used



Single loop addressable panel  
Can connect up to 128 addressable devices  
8 zone fire and fault indication with consumer definable label  
Self configurable via panel keyboard



Powered from FACP directly  
Zonal Fire and general Fault indication  
Dimension: 280mm x 110mm x 46mm



Aesthetically pleasing design with large LCD display  
Compatible with all GST intelligent fire alarm panels  
Back lit LCD displaying all fire information  
Local sounder mute and scroll alarms buttons



8 Zone conventional fire telephone center  
2-way voice communication  
Networkable up to 8 Fire Telephone panels  
Call divert to the network panels



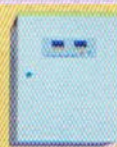
Provides remote control of system  
Password protect access levels  
Flush-mount or Surface-mount structure  
Functional control of network panels



Addressable output module  
Optional dry contact output or active 24VDC output  
Loop powered for relay application  
Cable monitored active output suitable for connecting



Portable programming tool for addressing and testing of intelligent devices  
Programs all loop devices (1-242)  
Programming of I2C protocol devices like Reflective Beam



24 volt DC intelligent PSU, 5 ampere version  
Digital display showing output voltage and load current  
Fully monitored with output protection  
Addressable intelligence for monitoring and reporting to main







## Conventional & Intelligent Fire Alarm System



Aesthetically pleasing low profile design  
8 Bit intelligent processor with A/D converter  
Built in algorithm maps for false alarm rejection  
Electronically addressed



Re-settable (non-breaking glass) via special key  
Advanced digital communication  
Electronically addressing  
Friendly installation and test



Fixed Temperature and Rate of Rise Heat Detection  
Aesthetically pleasing low profile design  
8 Bit intelligent processor with A/D converter  
Electronically addressed



Addressable combined flashing high intensity LED beacon and sounder  
Two part plug-in construction with base mounted termination allowing easy installation and connection



Ultraviolet sensor that detects the UV rays produced by a flame  
Aesthetically pleasing Low profile design  
Dust/ corrosion/ humidity resistant  
Electronically addressed



Two parts construction with base mounted termination allows easy installation  
16 programmable alarm tones  
Optional Evacuate + Alert mode



Combined multiple detection of optical smoke & dual heat alarm  
Identifiable Smoke alarm and Heat alarm  
Advanced digital communication  
Electronic addressing



Fixed extension of Fire Telephone System  
Open box and lift receiver to communicate with central control  
Compatible with all GST conventional fire telephone handsets in same zone



Advanced digital communication  
Built in 8 bit microprocessor  
Algorithm maps for faster response and false alarm rejection  
Secure and speedy communication



Simply insert mobile handset into jack to establish communications with the control centre  
Compatible with all GST conventional fire telephone handsets in same zone



Combined all the features of the C-9102 Optical and the C-9103 Heat detector  
LED for 360° vision  
Sensing chamber for exceptional dust proof ability



Mobile handset compatible with GST fire telephone jacks  
Dimension: 210mm x 50mm x 50mm



Aesthetically pleasing low profile design  
Twin LED for 360° vision  
Removable optical chamber for easy cleaning & maintenance  
With remote indicator output



Compatible with the GST- FT series of fire telephone panels for emergency communication over a dedicated hard wired system normally located with the fire command centre  
Dimension: 160mm x 80mm x 34mm



Fixed Temperature and Rate of Rise Heat Detection  
Aesthetically pleasing low profile design  
8 bit intelligent processor  
Twin LED for 360° vision



Remote indicator for direct connection to detector via remote indicator terminals  
Compatible with Intelligent and Conventional series detectors







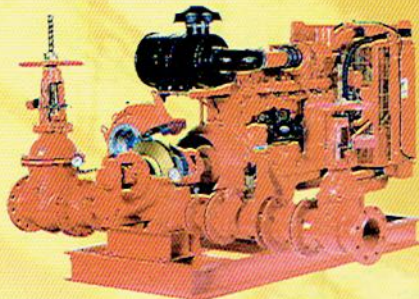
## Fire Pumps

Mas Pump is the most innovative and followed company which has been Manufacturing centrifugal Pumps for various industry sector groups such as watering, heating & cooling systems, shipbuilding industry, waste water management Systems, fire Extinguishing process and so on since 1977. Beyond Expectations from a pump Manufacturer; it dedicates itself to the efficient use of energy and water, and to the conservation of living resources in this way. Mas Pump has Managed to obtain quality certifications such as ISO 9001: 2008 Quality Management System, ISO 14001: 2004 Environmental Management System and ISO 18001: 2007 Occupational Health and Safety Management System as well as the UL, FM, NFPA 20, TSE, CE, ATEX, GOST, UKR Sepro quality certificates.

### UL-FM YNM

#### End Suction Centrifugal Fire Pumps

Flow Rate (m <sup>3</sup> /h)	: 10 ..... 280
Head (m)	: 55 ... 110
Operating Pressure (bar)	: 16
Operating Temperature (°C)	: 0 ... 60
Motor Speed Range (d/d)	: 2950
Suction Flange	: DN 80 ... DN 200
Discharge Flange	: DN 50 ... DN 150



### Fire Boosters- NM Series

#### Fire Boosters

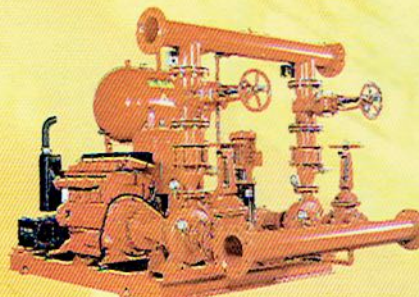
Flow Rate (m <sup>3</sup> /h)	: 22.7 .... 170
Head (m)	: 40 - 90
Motor Speed (d/dk)	: 2900



### YNM Series

#### End Suction Centrifugal Fire Pumps

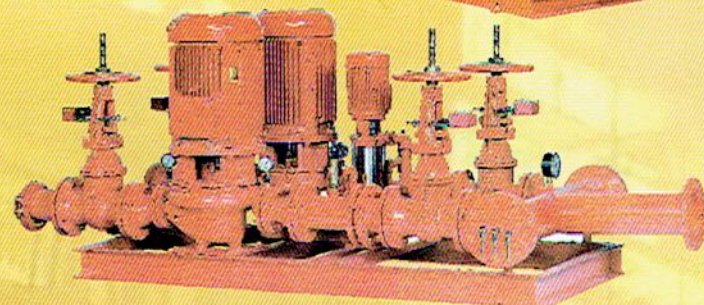
Flow Rate (m <sup>3</sup> /h)	: 20-105
Head (m)	: 35 ... 105
Operating Pressure (bar)	: 16
Operating Temperature (°C)	: 0 ... 60
Motor Speed Range (d/d)	: 2900 ... 3600
Suction Flange	: DN 65 ... DN 200
Discharge Flange	: DN 50 ... DN 150



### YSP Series

#### Split Case Double Suction Centrifugal Fire Pumps

Flow Rate (m <sup>3</sup> /h)	: 23 ... 454
Head (m)	: 44 ... 188
Operating Pressure (bar)	: 16 ... 24
Motor Speed Range (d/d)	: 1800 ... 2950
Suction Flange	: DN 100 ... DN 250
Discharge Flange	: DN 65 ... DN 200



### YPH Series

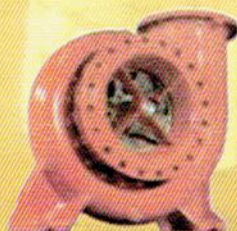
#### In-Line-Type Centrifugal Fire Pumps

Flow Rate (m <sup>3</sup> /h)	: 5 ... 270
Head (m)	: 35 ... 105
Operating Pressure (bar)	: 16
Operating Temperature (°C)	: 0 ... 60
Motor Speed Range (d/d)	: 2900 ... 3600
Suction Flange	: DN 80 ... DN 150
Discharge Flange	: DN 65 ... DN 100

### ENM

#### FI-FI System Pumps

Capacity Range (m <sup>3</sup> /h)	: 400 ... 4000
Head (m)	: 60 ... 150
Operating Pressure (bar)	: 16
Operating Temperature (°C)	: -20 ... 110
Motor Speed Range (d/d)	: 1000...1800
Suction Flange	: DN 300 ... DN 500
Compression Flange	: DN 250 ... DN 400



### DSP Series

#### Single Pump, Mono-Phase Boosters

Flow Rate (m <sup>3</sup> /h)	: 0 ... 4
Head (m)	: 20 ... 78
Operating Pressure (bar)	: 8
Motor Speed Range (d/d)	: 2900 ... 3600
Suction Flange	: 1 1/4"
Compression Flange	: 1 1/4"







## Fire Hydrant System



### Gimbal Type Expansion Joints

Operation Conditions  
Operating Temperature: -80°C/+600°C  
Operating Pressure: PN 2,5/6/16/25/40/64  
Nominal Diameters: DN25 (1") - DN1000 (40")



### U-Flex Type Connection

Operating Conditions  
Operating Temperature: -80°C/+600°C  
Operating Pressure: 16 bar  
Nominal Diameters: DN15 (1/2") - DN300 (12")



### Rubber Expansion Joints

Synthetic neoprene with special cord reinforcement  
Nominal Diameter: DN 32(1 1/4") - DN 600 (24")



### V-2T Ball Valve

Body: Stainless steel AISI316 / AISI304  
Ball: Stainless steel AISI316 / AISI304  
DN15 (1/2") - DN100 (4")  
Up to 63 bars



### Flow Switch

1" - 2" Threaded  
2" - 8" U Bolt  
Steel water pipe  
Sch.10 - 40 pipes



### Pressure Reducing Valve

1 1/2" - 3" Threaded  
1 1/2" - 10" Flanged  
1 1/2" - 8" Grooved



### Supervisory Switch Butterfly Valve

Body: ASTM A 536 Nodular cast iron  
Disc: ASTM 395 (Nickel covered) Nodular cast iron  
Spindle: ASTM 583 Tip 416 Stainless Steel  
Threaded Box: Cast iron and Steel



### NRS Non-rising Valve

Body: ASTM A 536 Nodular Cast iron  
Cover: ASTM 536 Nodular cast iron  
Spindle: ASTM AISI420 Stainless steel  
Slide: Covered by EPDM nodular cast iron



### Relief (Pressure Reduce) Valves

Threaded and Flanged  
82°C  
2" - 2 1/2" Threaded  
2" - 10" Flanged



### Test and Drainage Valves

2" and under 1/4" and over  
2 1/2", 3", 3 1/2" 1 1/4" and over  
4" and over 2"  
k: 80, k: 115, k: 160, k: 200, k: 242, k: 320, k: 360



### Fire Squad Connection Valve

Body: ASTM A 536 Nodular Cast iron  
Connection Type: Threaded (F X F)  
Dimension: 2 1/2" - 1 1/2" NPT  
Working pressure: 300psi  
Surface: Brass chromed.



### Wet Alarm Valve System and Equipment

Working Temperature: -40 °C ~ +71°C  
Connection: 1/2" NPT  
Working pressure: 200-300psi  
Approvals: FM, UL, ULC



### Warehouse Type Sprinklers

Connection diameter: 3/4" npt  
Assemble type: Pendant (Pendant) Tip  
K-Factor: 14 (200)  
Approvals: FM, UL, ULC, LPCB, VdS  
Temperature: 74°C, 96°C



### High Protected Type Sprinklers

K: 80 (5.6) - Low hazard  
K: 115 (8.0) - Low hazard  
K: 160 (11.2) - Low hazard  
K: 200 (14) - Low hazard  
Middle hazard, High hazard



### Housing Type Sprinklers

K Factor: 43, 62, 71, 75, 84, 107  
Connection diameter: 1/2" - 3/4"  
Temperature: 68°C, 79°C  
Surface: Brass, Chromed and white painted



### Right Angle Valve

2 1/2" (65mm) BSPT Male  
2 1/2" (65mm) PN16 to BS4504  
2 1/2" Female  
inst. to BS 336



### WET & DRY RISER EQUIPMENT

Inlet: 65mm Male Instantaneous to BS 336  
Copper Alloy to BS 1400  
Outlet - 2 Way Breeching  
100mm PN16 to BS4504  
4" ANSI Class 150 F.F.  
4 Way Breeching: 150mm PN16 to BS 4504



### Pillar Fire Hydrant

Two Way Pillar Hydrant With  
Oblique Landing Valve  
2 X 2 1/2" Oblique Landing Valve With  
Female  
BS336 Outlet



### FIRE HOSE REELS

3/4" (19mm) or 1" (25mm) BSP Thread  
3/4" (19mm) or 1" (25mm) Serrated  
Aluminium Alloy and GI Coated Steel  
against Corrosions  
12 bar (217 psi), 18 Bar (261 psi)



### Fire Hose

1 1/2" (38mm) or 2 1/2" (65mm)  
30 meters,  
BS 6391  
10 Bar, 13 Bar and 17 Bar



### HOSE CABINET

Mild Steel/Stainless Steel/  
Fiberglass Reinforce Plastic  
Wire Mesh/Clear Glass  
Red Epoxy Powder Coated



### Branchpipes, Handline Nozzle and Fire Hose

Aluminium Alloy to BS 1490/Copper Alloy to BS1400  
Male Instantaneous to BS336, ANSI NH-7.5  
Round Thread to BS336, Storz and Other  
International Outlet Fittings Are Available On Request.



### Foam /Water Monitor & Nozzle

Gun Metal (LG2)  
2 1/2" (65mm) or 3" (75mm)  
360. Deg with locking Device  
15 Deg. Through 75 Deg.



### Foam /Water Monitor & Nozzle

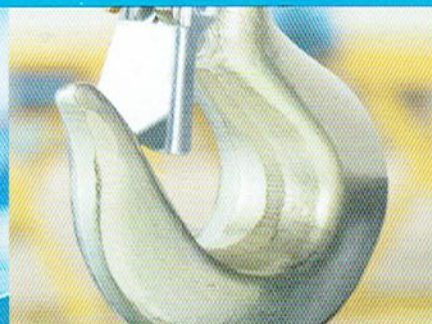
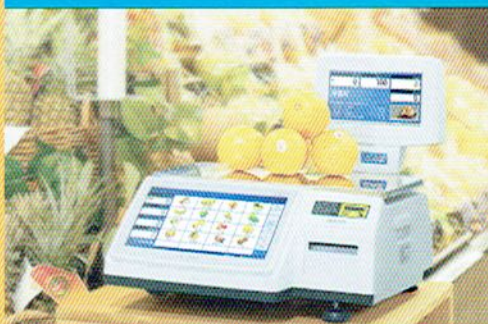
Gun Metal (LG2)  
2 1/2" (65mm) or 3" (75mm)  
360. Deg with locking Device  
15 Deg. Through 75 Deg.



### Foam /Water Monitor & Nozzle

Gun Metal (LG2)  
2 1/2" (65mm) or 3" (75mm)  
360. Deg with locking Device  
15 Deg. Through 75 Deg.





## Retail Industrial & Laboratory Scales

CAS Corporation is the leading supplier of electronic scale in the Korea market. With more than a 70% market share established in our short 17 year history, we are now exporting electronic scale product to more than 100 countries worldwide. With one of the most modern production and distribution network in the world today, we are fully committed to customer service and support on a GLOBAL scale. Our products carry International approvals such as OIML, NTEP, TUV, CSA NSC, Self Verification, and others.

By providing high quality components and scale products ranging from load cells, commercial scales, and industrial scale to industrial weighing system, all at competitive prices and complete with after sale service and state-of-the-art technical support, "We weigh the World" is our primary focus and commitment to innovation and technology.

### Retail Products



### Laboratory Products



### Bench & Hanger Scale Products



### Accessories Products

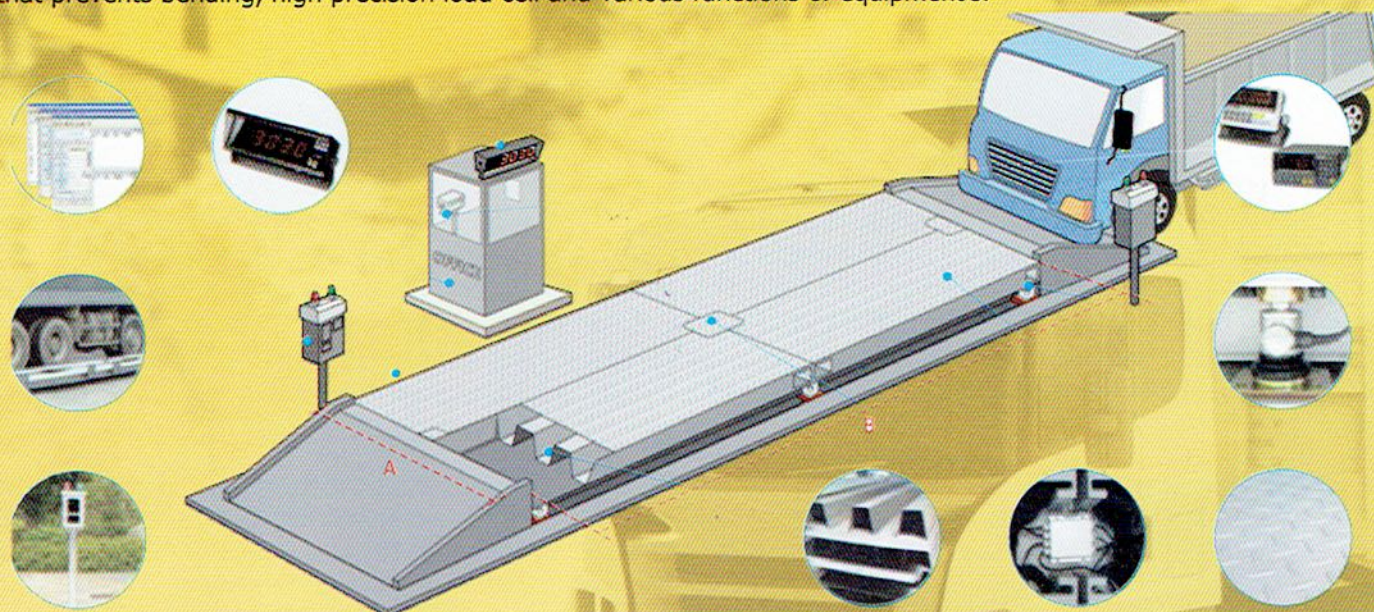






## VEHICLE WEIGHING SCALE

CAS vehicle weighing Scale is a rugged heavy-duty weighing scale for the industrial business. Its extraordinary design, strong body and a stainless steel high precision load cell provides you a reliable solution and also an easy installation. LMT has maximized assembly through structure of optimized module method, enabling easy installation and maintenance. Moreover, precise and accurate measurements can be taken with outstanding durability, structure that prevents bending, high precision load cell and various functions of equipment's.



Outstanding durability and structure that prevents bending. Prompt and convenient installation through modulated design. Convenient load cell installation with integrated load cell module. Prevents corrosion with luxurious powder coating treatment. Anti-slipper upper plate - Prevents accidents caused by slipping when measuring. CAS stainless steel load cell WBK applied.



**CAS**  
S • C • A • L • E







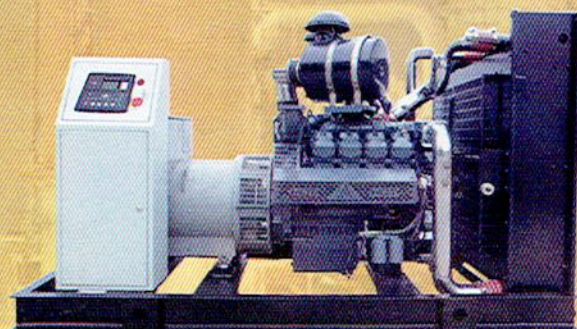
## DIESEL GENERATOR



FG Wilson has over fifty years of experience in the supply of diesel and gas generator sets. Our product range from 6.8 - 2,500 kVA, includes open and enclosed generator sets providing prime and standby power - from standby domestic use, right up to power modules with the ability to operate as complete power stations supplying electricity to national grids. With global production in Brazil, China, India, the USA and company headquarters in Northern Ireland, our manufacturing operations cover over 186,000m<sup>2</sup> - from which we have the capacity to produce more than 132,000 generator sets each year. In over 150 countries, global experience and engineering expertise, ensures we are best placed to deliver the most cost effective and technically advanced power generation systems around the world.



Cummins Inc., a global power leader, is a corporation of complementary business segments that design, manufacture, distribute and service diesel and natural gas engines and related technologies, including fuel systems, controls, air handling, filtration, emission solutions and electrical power generation systems. Today, Cummins is a multinational Fortune 500 company, serving customers worldwide in the areas of engines, power generation, components and distribution. Although we now have approximately 48,000 employees worldwide.



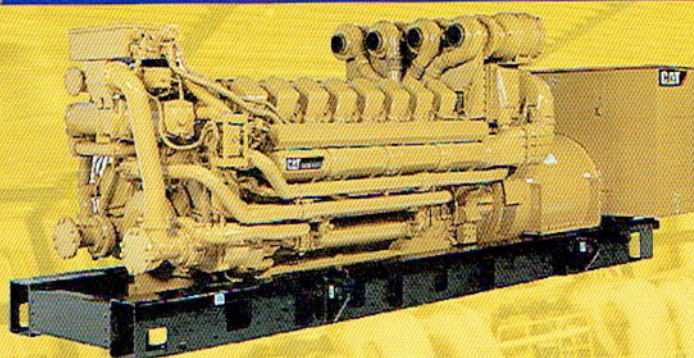
Originally founded as N.A. Otto & Cie. in Cologne, Germany, in 1864, DEUTZ AG is now the world's oldest engine company and one of the world's leading independent engine manufacturers. Its core competences are the development, design, production, distribution and servicing of diesel and gas engines for professional applications. The engine specialist offers a broad spectrum of liquid-cooled and air cooled engines with capacities ranging from 25 kW to 620 kW, which are used in construction equipment, agricultural machinery, material handling, power-generation plant, commercial and rail vehicles.



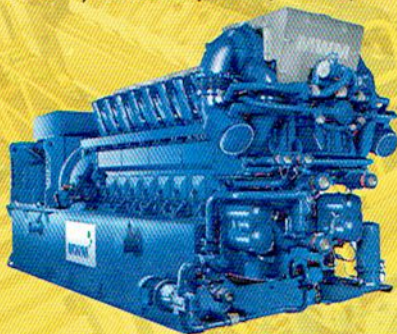




## GAS GENERATOR



Ranging from 20 to 9,700 kW (25 to 12,125 kVA) in a single unit, our gas generator sets are easy to select, permit and install. They are proven for reliable operation with a wide range of gaseous fuels including natural gas, biogas from landfills and digesters, propane and alternative fuels. We build durable, low life-cycle cost power systems that we integrate with controls, exhaust systems, fuel train, combined cooling heat & power skids and switchgear. Caterpillar is leading the power generation marketplace with market leading power systems engineered to deliver unmatched flexibility, expandability, reliability and cost-effectiveness. With parts and service available globally, Caterpillar offers worldwide product support through its comprehensive service and dealer network, where technicians are trained to service every aspect of the equipment. Any size or shape. In any regulatory environment. When you need power, Caterpillar is equal to the challenge. Our generators are used in a variety of applications.



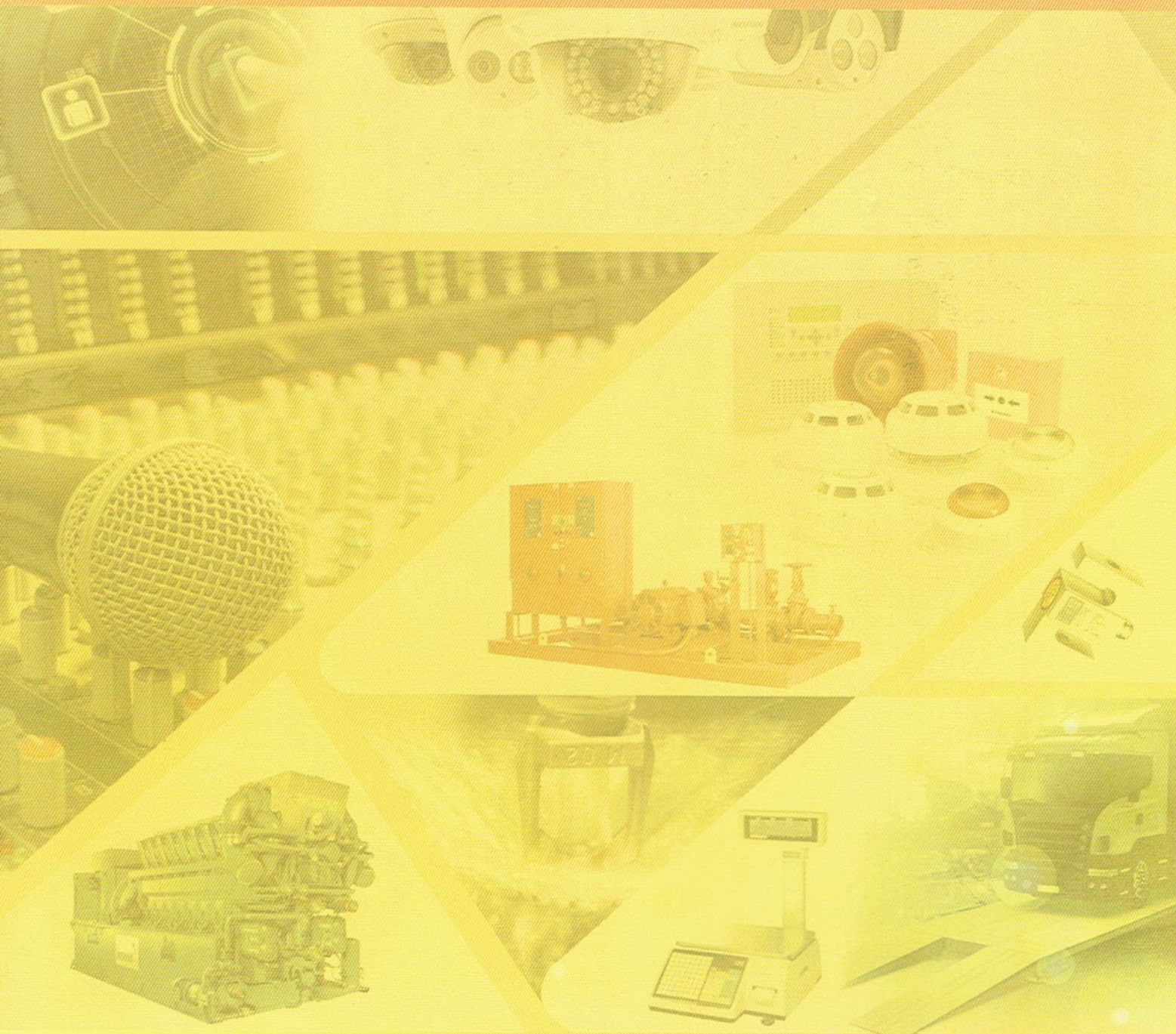
MWM Gas Engines and Gensets – Output. Reliability. Economy. For your success. MWM's product portfolio comprises gas engines and gensets in the output range from 400 kWel to 4,500 kWel. In this way, it is possible to set up power plants with an output of up to 100,000 kWel and more. The gas engines can be operated with various types of gas, such as natural gas, shale gas, mine gas, biogas, landfill gas, sewage gas, and syngas. They are designed for maximum electrical and thermal efficiency, low operating and service costs, and high reliability and availability. Thus they achieve efficiency of over 90 percent.



Wärtsilä is a global leader in advanced technologies and complete lifecycle solutions for the marine and energy markets. By emphasising sustainable innovation and total efficiency, Wärtsilä maximises the environmental and economic performance of the vessels and power plants of its customers. In 2016, Wärtsilä's net sales totalled EUR 4.8 billion with approximately 18,000 employees. The company has operations in over 200 locations in more than 70 countries around the world. Wärtsilä is listed on Nasdaq Helsinki. Wärtsilä Energy Solutions is a leading global energy system integrator offering a broad range of environmentally sound solutions. Our offering includes ultra-flexible internal combustion engine based power plants, utility-scale solar PV power plants, energy storage & integration solutions, as well as LNG terminals and distribution systems. The flexible and efficient Wärtsilä solutions provide customers with superior value and enable a transition to a more sustainable and modern energy system. As of 2017, Wärtsilä has 63 GW of installed power plant capacity in 176 countries around the world.







BIOMETRIC TECH  
**ANVIZ**

**HIKVISION**

**CAMPRO**

**AHUJA**  
PUBLIC ADDRESS SYSTEMS  
Hallmark of Reliability!

**CAS**  
S · C · A · L · L

**Perkins**



**MWM**  
Energy. Efficiency. Environment.

**CAT**

**WÄRTSILÄ**



**GST**  
United Technologies

**MAS DAF**

**KOLLING**

**SRI**

**TORRA  
TECH**

**WED**

**VIKING**

**EBARA**

**CLA-VAL**

**POTTER**  
The Symbol of Protection

📍 23, Atish Dipankar Road (4th Floor), Dhaka-1214, Bangladesh

☎ +88 01711-954211, 01980-200788 📠 +88 02-7272189

✉ info@heartzbangla.com, sales@beartzbangla.com



🌐 [www.heartzbangla.com](http://www.heartzbangla.com)