



SOLAR COMMERCIAL LIGHTING SERIES PRODUCTS

Solar Flood Light

CORPORATE
CULTURE

Mission

World 「Wireless」

Values

Earnest,
Innovation,
Win-Win,
the Pursuit of Excellence

Vision

Micro Energy Storage
Global No.1

Goals

Contribute to Clients
Contribute to Team
Contribute to Environment

CONTENTS

• ABOUT US	01
• DEVELOPMENT HISTORY	03
• ENTERPRISE HONOR	05
• SOLAR COMMERCIAL LIGHTING	07
• WAWA FLOOD LIGHT SERIES	09
WAWA LIGHT 1.0	09
WAWA LIGHT 2.0	11
WAWA LIGHT 3.0/4.0	13
WAWA LIGHT 5.0/6.0	15
• TT FLOOD LIGHT SERIES	17
TT LIGHT 1.0	17
TT LIGHT 2.0/3.0	19
• RADAR FLOOD LIGHT SERIES	21
RADAR FLOOD LIGHT 1.0	21
RADAR FLOOD LIGHT 2.0	23
RADAR FLOOD LIGHT PLUS 1.0/2.0	25
• PRODUCT INSTALLATION CASE	27

WAWA

SOLAR COMMERCIAL LIGHTING SOLAR FLOOD LIGHT

More than 10 years warranty

Solar Flood Light Series

It is widely used in home lighting, streets and roads, residential areas, scenic spots, parks, squares, private gardens and other public places, also used for night lighting of advertising board, and construction outdoor lighting, easy to install, energy saving, no need to pay electric fee, longer life span.

FREE SUNSHINE FREE LIGHTING



Clean Energy



Low Carbon Environmental Protection



Don't Take Charge

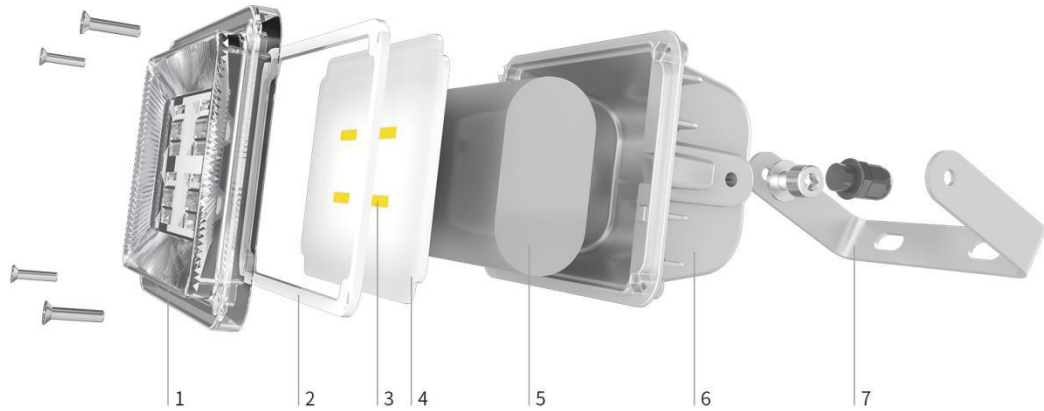




SOLAR FLOOD LIGHT

W A W A L I G H T

WAWA LIGHT 1.0

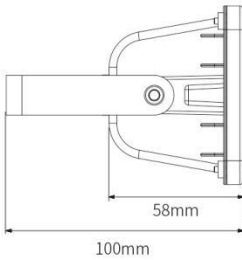
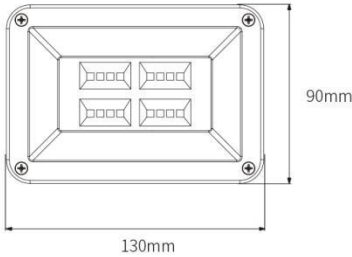


- 1 PC Outdoor Optical Lens
- 2 Waterproof Ring
- 3 High Efficiency LED
- 4 Control & Drive Integrated Lamp Board
- 5 LiFePO4 Battery
- 6 High Density Aluminum Magnesium Alloy Die Casting
- 7 Bracket

- ON key: turn on
- OFF key: turn off
- AUTO key: Reset, 6+X overnight lighting mode
- 6H key: lights off after 6 hours
- 8H key: lights off after 8 hours
- 85% key: reduce 15% power
- 70% key: reduce 30% power

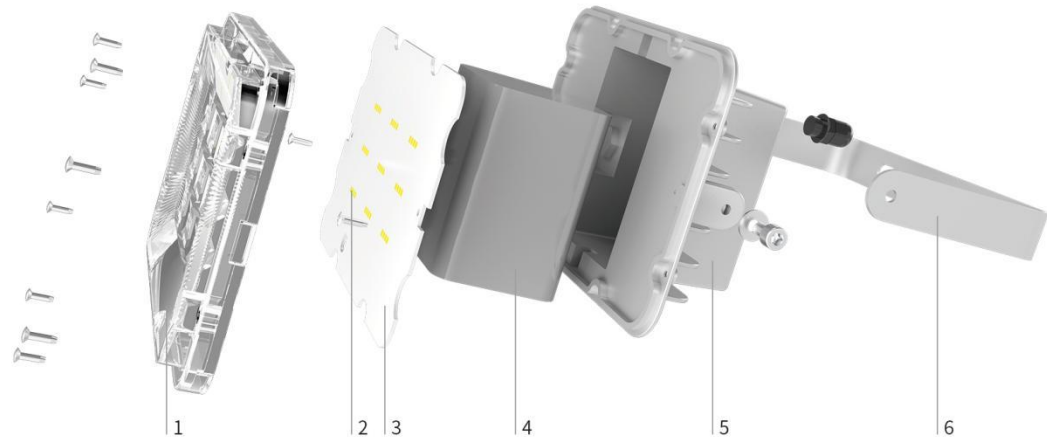


Technical Parameters	Model: BCT-WW1.0	
	Light Source	600lm
	Battery	3.2V/13Ah LiFePO4 battery
	Solar Panel	5V/12W
	Body Material	Aluminum magnesium alloy
	Installation Place	Indoor and outdoor
	Usage	Lighting or build the effect
	Installation Way	Install on the ground, pole, post or wall
	Warranty	More than 10 years
	Lighting Time	6+X/Intelligent power control, and can use remote control to adjust brightness and working mode.



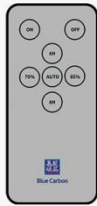


WAWA LIGHT 2.0

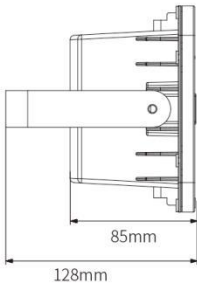
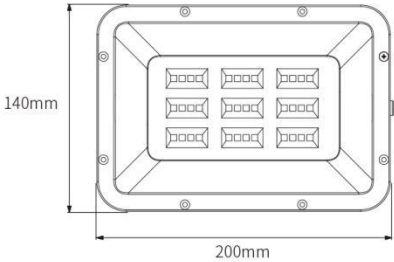


- 1 PC Outdoor Optical Lens
- 2 High Efficiency LED
- 3 Control & Drive Integrated Lamp Board
- 4 LiFePO4 Battery
- 5 High Density Aluminum Magnesium Alloy Die Casting
- 6 Bracket

ON key: turn on
OFF key: turn off
AUTO key: Reset, 6+X overnight lighting mode
6H key: lights off after 6 hours
8H key: lights off after 8 hours
85% key: reduce 15% power
70% key: reduce 30% power



Model: BCT-WW2.0		
Technical Parameters	Light Source	1500lm
	Battery	3.2V/20Ah LiFePO4 battery
	Solar Panel	5V/36W
	Body Material	Aluminum magnesium alloy
	Installation Place	Indoor and outdoor
	Usage	Lighting or build the effect
	Installation Way	Install on the ground, pole, post or wall
	Warranty	More than 10 years
Lighting Time		6+X/Intelligent power control, and can use remote control to adjust brightness and working mode.

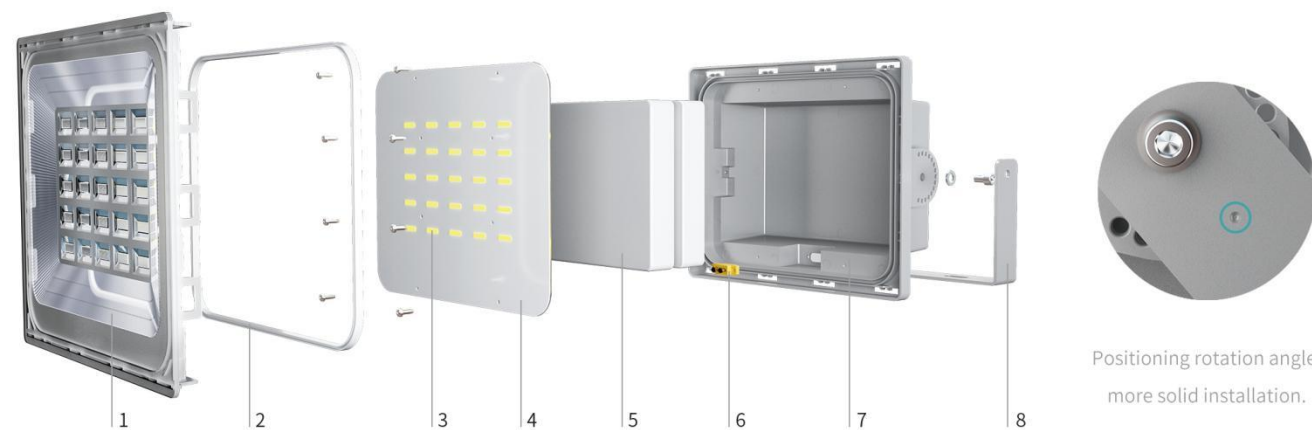


SOLAR FLOOD LIGHT

W A L I G H T

W A T

WAWA LIGHT 3.0/4.0



LiFePO4 Battery

Long service life,
high safety factor.

(PC) Outdoor Optical Lens

Three prism reflecting cone design,
three 90° Angle reflected beam,
360° total reflector,
better reflectivity.

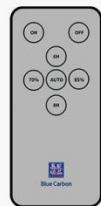
High Lumen LED

High lumen LED,
High lighting brightness,
Long service life.

Technical Parameters

Model: BCT-WW3.0/BCT-WW4.0

Light Source	1600lm	2200lm
Battery	3.2V/25Ah LiFePO4 battery	3.2V/45Ah LiFePO4 battery
Solar Panel	5V/36W	5V/50W
Body Material	Aluminum magnesium alloy	
Installation Place	Indoor and outdoor	
Usage	Lighting or build the effect	
Installation Way	Install on the ground, pole, post or wall	
Warranty	More than 10 years	
Lighting Time	6+X/Intelligent power control, and can use remote control to adjust brightness and working mode.	



ON key: turn on

OFF key: turn off

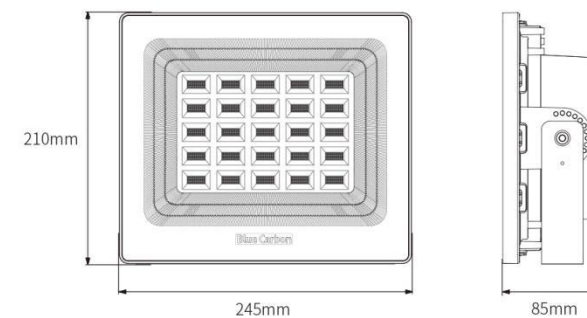
AUTO key: Reset, 6+X overnight lighting mode

6H key: lights off after 6 hours

8H key: lights off after 8 hours

85% key: reduce 15% power

70% key: reduce 30% power



- 1 PC Outdoor Optical Lens
- 2 Waterproof Ring
- 3 High Efficiency LED
- 4 Control & Drive Integrated Lamp Board
- 5 LiFePO4 Battery
- 6 Military Aviation Plug
- 7 High Density Aluminum Magnesium Alloy Die Casting
- 8 Bracket

SOLAR FLOOD LIGHT

W A L G
A L I H
W A T

WAWA LIGHT 5.0/6.0



Positioning rotation angle,
more solid installation.

LiFePO4 Battery

Long service life,
high safety factor.

(PC) Outdoor Optical Lens

Three prism reflecting cone design,
three 90° Angle reflected beam,
360° total reflector,
better reflectivity.

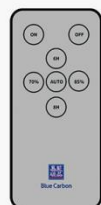
High Lumen LED

High lumen LED,
High lighting brightness,
Long service life.

Technical Parameters

Model: BCT-WW5.0/BCT-WW6.0

Light Source	3500lm	5600lm
Battery	3.2V/60Ah LiFePO4 battery	3.2V/80Ah LiFePO4 battery
Solar Panel	5V/80W	5V/120W
Body Material	Aluminum magnesium alloy	
Installation Place	Indoor and outdoor	
Usage	Lighting or build the effect	
Installation Way	Install on the ground, pole, post or wall	
Warranty	More than 10 years	
Lighting Time	6+X/Intelligent power control, and can use remote control to adjust brightness and working mode.	



ON key: turn on

OFF key: turn off

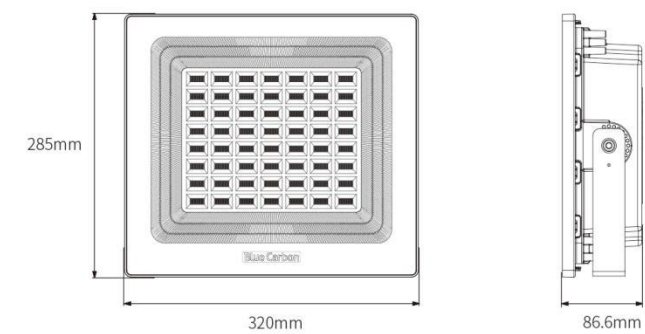
AUTO key: Reset, 6+X overnight lighting mode

6H key: lights off after 6 hours

8H key: lights off after 8 hours

85% key: reduce 15% power

70% key: reduce 30% power

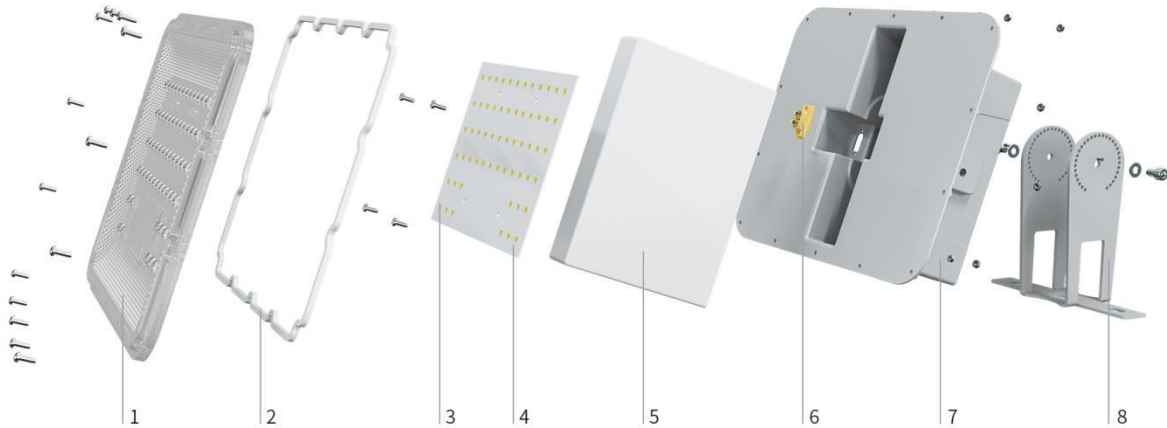


- 1 PC Outdoor Optical Lens
- 2 Waterproof Ring
- 3 High Efficiency LED
- 4 Control & Drive Integrated Lamp Board
- 5 Battery Card
- 6 LiFePO4 Battery
- 7 Military Aviation Plug
- 8 High Density Aluminum Magnesium Alloy Die Casting
- 9 Bracket

SOLAR FLOOD LIGHT

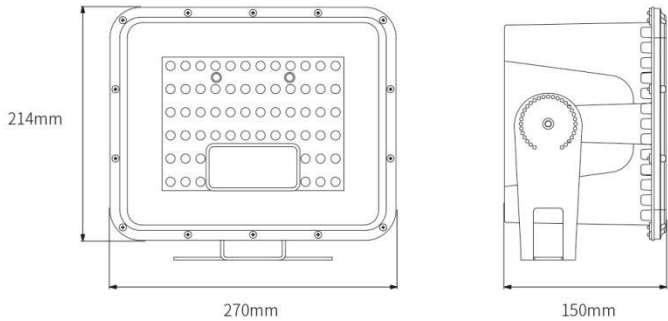
TT LIGHT 1.0

It is widely used in home lighting, streets and roads, residential areas, scenic spots, parks, squares, private gardens and other public places, also used for night lighting of advertising board, and construction outdoor lighting, easy to install, energy saving, no need to pay electric fee, longer life span.



Back cylinder design,
scientific and rapid heat dissipation

- 1 PC Outdoor Optical Lens
- 2 Waterproof Ring
- 3 High Efficiency LED
- 4 Control & Drive Integrated Lamp Board
- 5 LiFePO4 Battery
- 6 Military Aviation Plug
- 7 High Density Aluminum Magnesium Alloy Die Casting
- 8 Bracket



Limit machine meters screw,
fix the desired Angle.
Thickened and widened support,
stable and firm installation.

Technical Parameters

- ON key: turn on
- OFF key: turn off
- AUTO key: Reset, 6+X overnight lighting mode
- 6H key: lights off after 6 hours
- 8H key: lights off after 8 hours
- 85% key: reduce 15% power
- 70% key: reduce 30% power



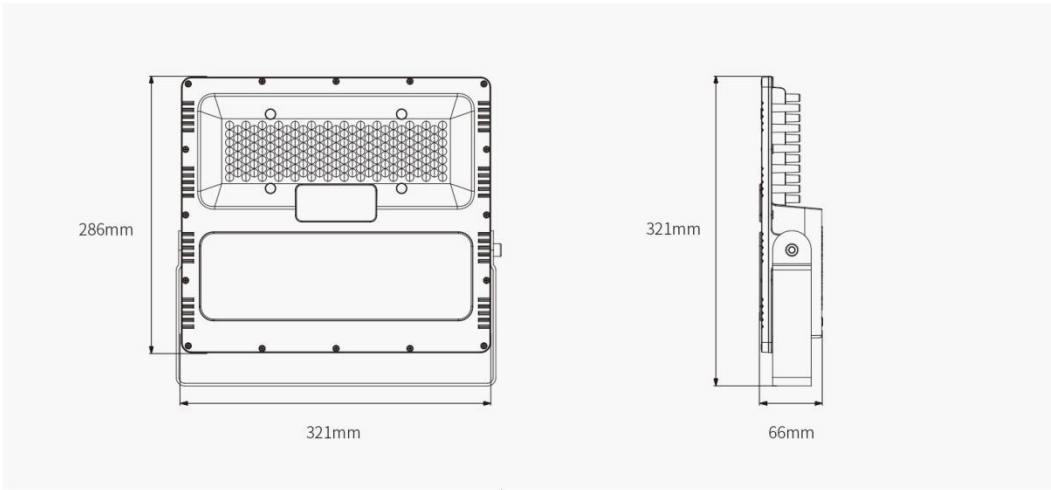
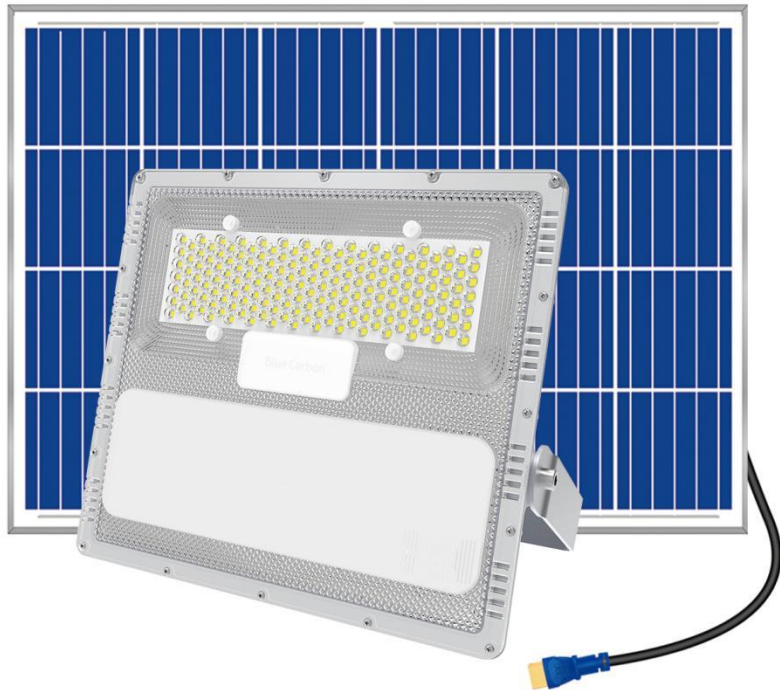
Model: BCT-TT1.0

Light Source	1200lm
Battery	3.2V/20Ah LiFePO4 battery
Solar Panel	5V/30W
Body Material	Aluminum magnesium alloy
Installation Place	Indoor and outdoor
Usage	Lighting or build the effect
Installation Way	Install on the ground, pole, post or wall
Warranty	More than 10 years
Lighting Time	6+X/Intelligent power control, and can use remote control to adjust brightness and working mode.

SOLAR FLOOD LIGHT

TT LIGHT 2.0/3.0

It is widely used in home lighting, streets and roads, residential areas, scenic spots, parks, squares, private gardens and other public places, also used for night lighting of advertising board, and construction outdoor lighting, easy to install, energy saving, no need to pay electric fee, longer life span.



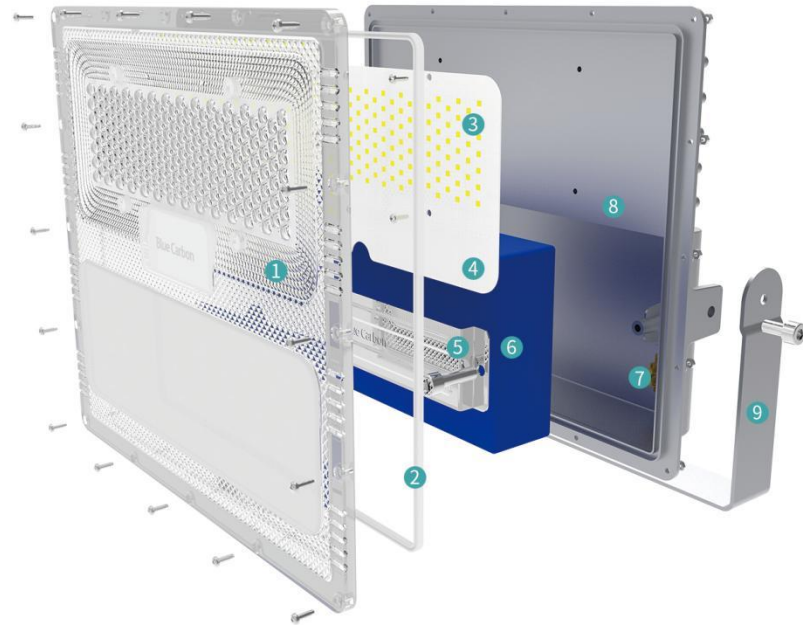
Model: BCT-TT2.0/BCT-TT3.0

Technical Parameters

- ON key: turn on
- OFF key: turn off
- AUTO key: Reset, 6+X overnight lighting mode
- 6H key: lights off after 6 hours
- 8H key: lights off after 8 hours
- 85% key: reduce 15% power
- 70% key: reduce 30% power



Light Source	3200lm	5400lm
Battery	3.2V/50Ah LiFePO4 battery	3.2V/70Ah LiFePO4 battery
Solar Panel	5V/80W	5V/120W
Body Material	Aluminum magnesium alloy	
Installation Place	Indoor and outdoor	
Usage	Lighting or build the effect	
Installation Way	Install on the ground, pole, post or wall	
Warranty	More than 10 years	
Lighting Time	6+X/Intelligent power control, and can use remote control to adjust brightness and working mode.	



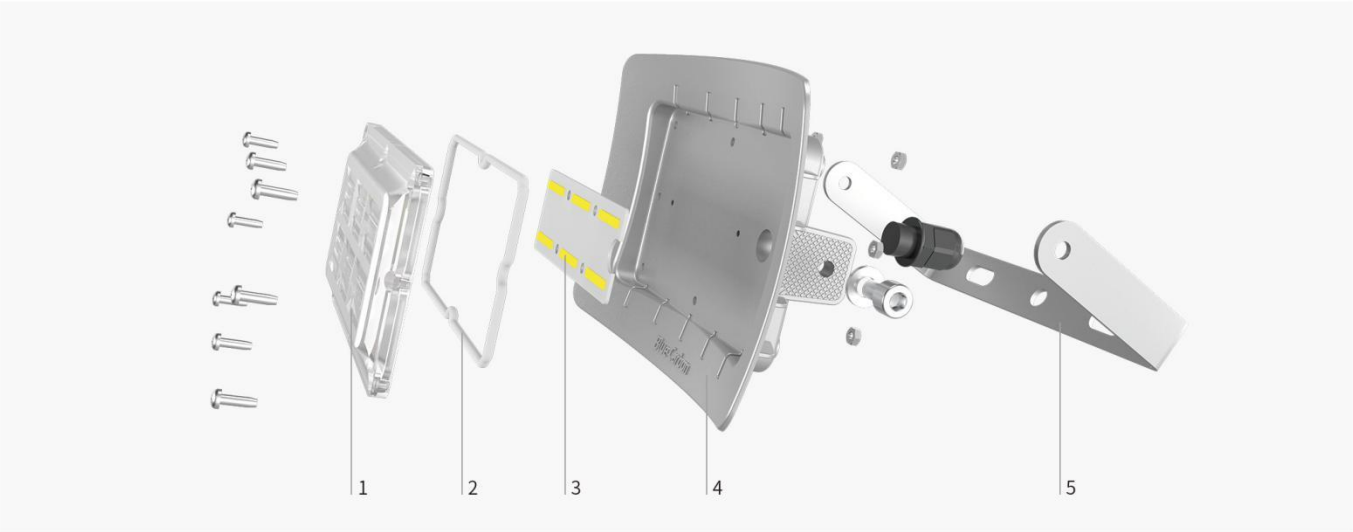
- 1 PC Outdoor Optical Lens
- 2 Waterproof Ring
- 3 High Efficiency LED
- 4 Control & Drive Integrated Lamp Board
- 5 Battery Card
- 6 LiFePO4 Battery
- 7 Military Aviation Plug
- 8 High Density Aluminum Magnesium Alloy Die Casting
- 9 Bracket

SOLAR FLOOD LIGHT

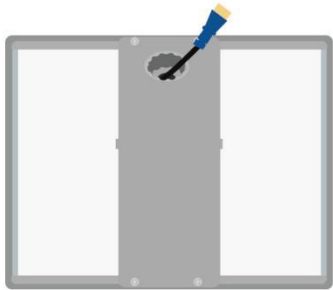
R
A
D
I
A
N
T
F
L
O
O
D
L
I
G
H
T
1.0

R

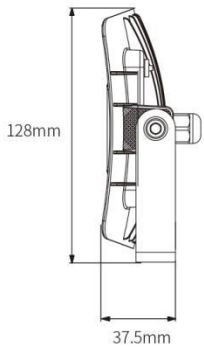
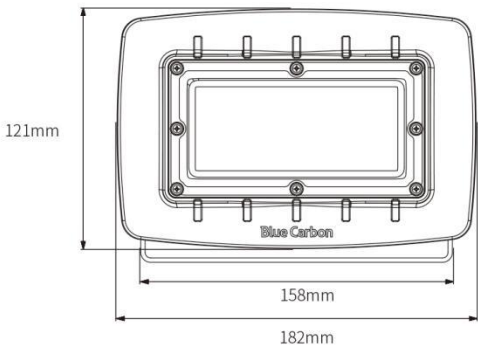
It is widely used in home lighting, streets and roads, residential areas, scenic spots, parks, squares, private gardens and other public places, also used for night lighting of advertising board, and construction outdoor lighting, easy to install, energy saving, no need to pay electric fee, longer life span.



The solar panel has its own battery compartment

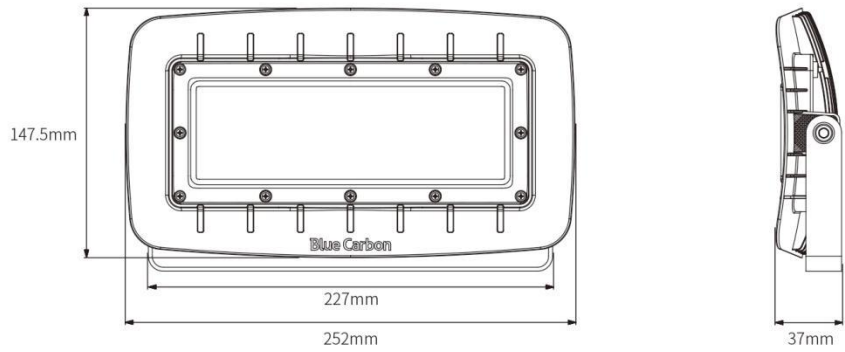
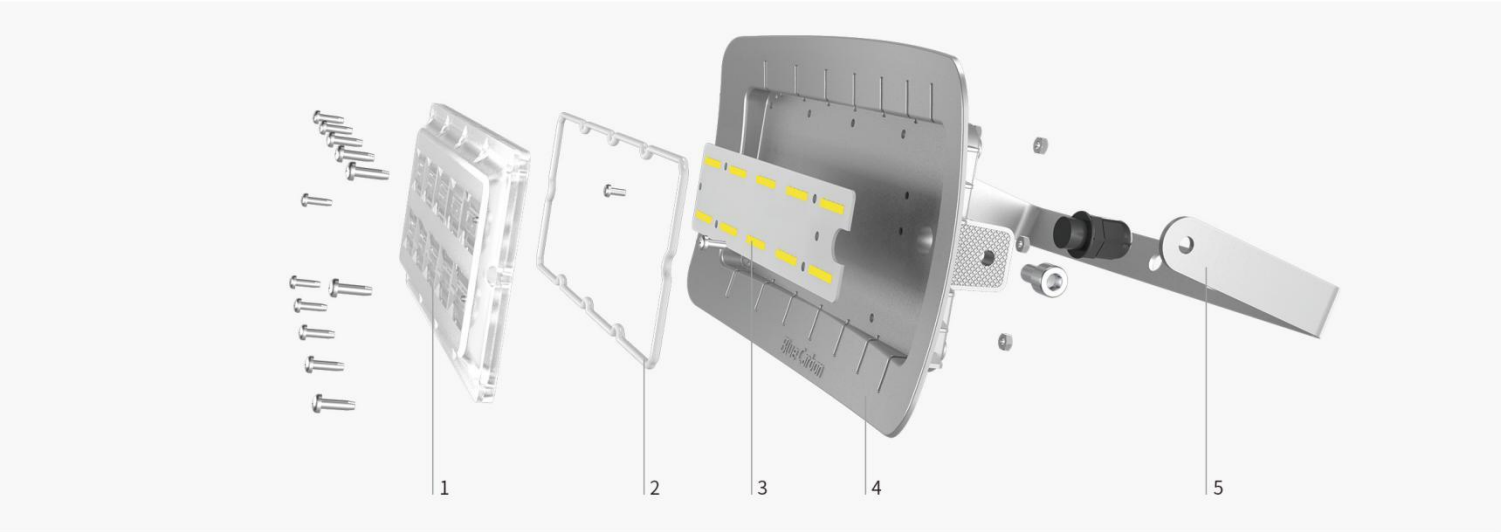


- 1 PC Outdoor Optical Lens
- 2 Waterproof Ring
- 3 High Efficiency LED
- 4 High Density Aluminum Magnesium Alloy Die Casting
- 5 Bracket



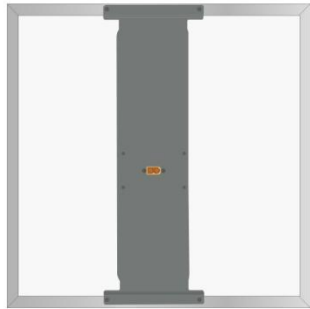
Technical Parameters

Model: BCT-FLR1.0		
Light Source	1000lm	
Battery	3.2V/20Ah LiFePO4 battery	
Solar Panel	5V/30W	
Body Material	Aluminum magnesium alloy	
Installation Place	Indoor and outdoor	
Usage	Lighting or build the effect	
Installation Way	Install on the ground, pole, post or wall	
Warranty	More than 10 years	
Lighting Time	6+X/Intelligent power control, overnight lighting.	



- 1 PC Outdoor Optical Lens
- 2 Waterproof Ring
- 3 High Efficiency LED
- 4 High Density Aluminum Magnesium Alloy Die Casting
- 5 Bracket

The solar panel has its own battery compartment



RADER FLOOD LIGHT 2.0

It is widely used in home lighting, streets and roads, residential areas, scenic spots, parks, squares, private gardens and other public places, also used for night lighting of advertising board, and construction outdoor lighting, easy to install, energy saving, no need to pay electric fee, longer life span.

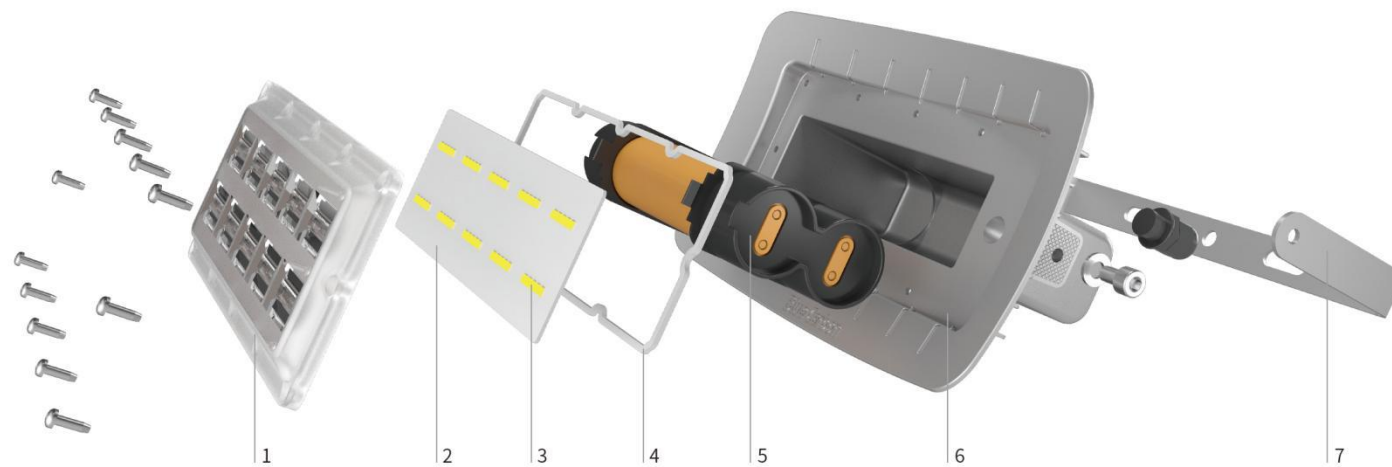


Technical Parameters	Model: BCT-FLR2.0	
	Light Source	2400lm
	Battery	3.2V/50Ah LiFePO4 battery
	Solar Panel	5V/50W
	Body Material	Aluminum magnesium alloy
	Installation Place	Indoor and outdoor
	Usage	Lighting or build the effect
	Installation Way	Install on the ground, pole, post or wall
	Warranty	More than 10 years
	Lighting Time	6+X/Intelligent power control, overnight lighting.

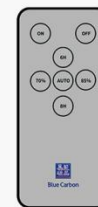
SOLAR FLOOD LIGHT

RADER FLOOD LIGHT PLUS 1.0/2.0

It is widely used in home lighting, streets and roads, residential areas, scenic spots, parks, squares, private gardens and other public places, also used for night lighting of advertising board, and construction outdoor lighting, easy to install, energy saving, no need to pay electric fee, longer life span.



- 1 PC Outdoor Optical Lens
- 2 Control & Drive Integrated Lamp Board
- 3 High Efficiency LED
- 4 Waterproof Ring
- 5 LiFePO₄ Battery
- 6 High Density Aluminum Magnesium Alloy Die Casting
- 7 Bracket

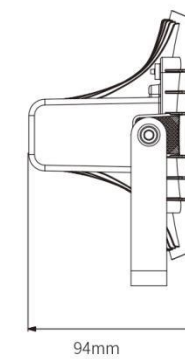
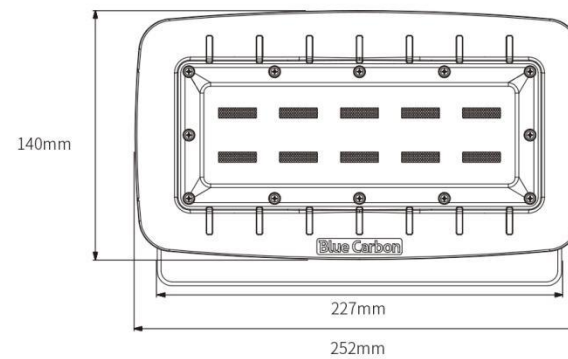


- ON key: turn on
- OFF key: turn off
- AUTO key: Reset, 6+X overnight lighting mode
- 6H key: lights off after 6 hours
- 8H key: lights off after 8 hours
- 85% key: reduce 15% power
- 70% key: reduce 30% power

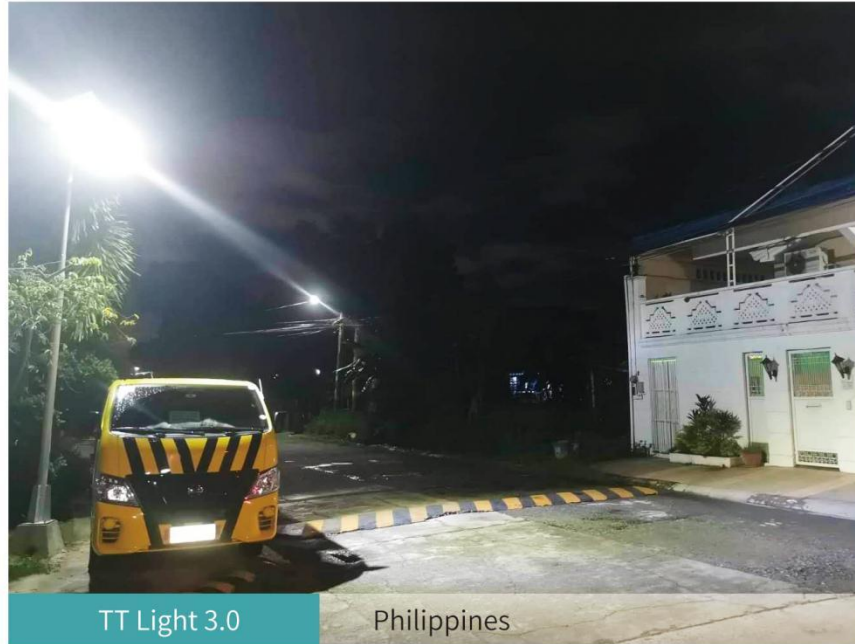
Technical Parameters

Model: BCT-FLRP1.0/BCT-FLRP2.0

Light Source	800lm	1800lm
Battery	3.2V/15Ah LiFePO ₄ battery	3.2V/30Ah LiFePO ₄ battery
Solar Panel	5V/18W	5V/50W
Body Material	Aluminum magnesium alloy	
Installation Place	Indoor and outdoor	
Usage	Lighting or build the effect	
Installation Way	Install on the ground, pole, post or wall	
Warranty	More than 10 years	
Lighting Time	6+X/Intelligent power control, and can use remote control to adjust brightness and working mode.	



PRODUCT INSTALLATION CASE



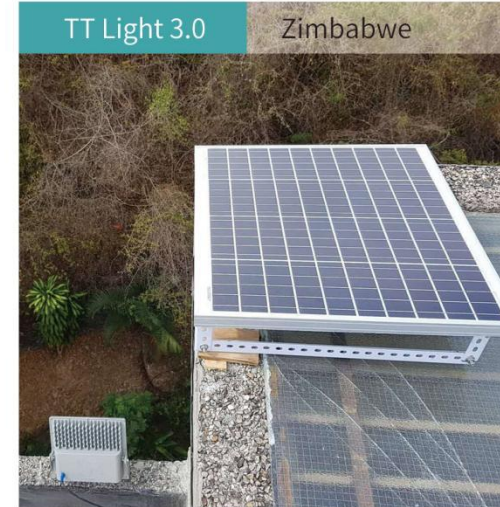
TT Light 3.0

Philippines

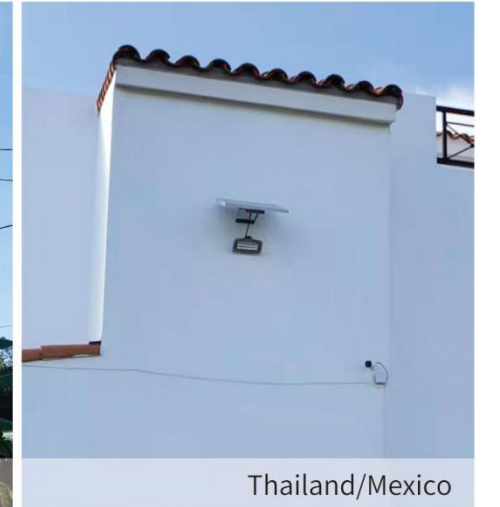


TT Light 3.0

Zimbabwe



Radar Flood Light 2.0



Thailand/Mexico



WAWA Light 2.0

Thailand



WAWA Light 4.0

Columbia



WAWA Light 1.0

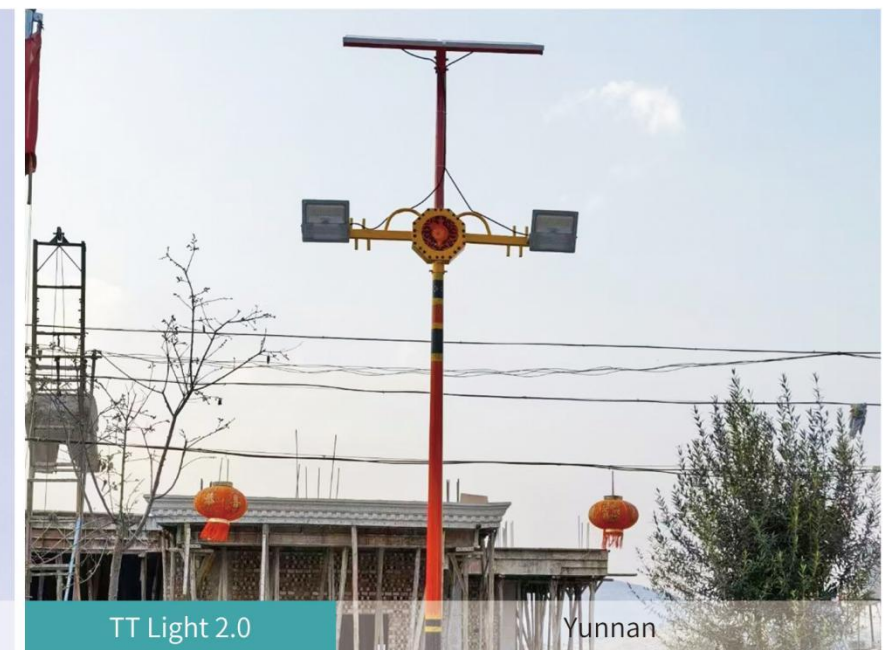
Russia



WAWA Light 1.0

Sri Lanka

PRODUCT INSTALLATION CASE



PRODUCT INSTALLATION CASE

