



Approach Industries Limited
Approach (Dongguan) Precision Industries Ltd.

Your Reliable EMS Partner

Founded in 1994

Company:

Founded in 1994

Head Office: Hong Kong

Factory Site: Chang An, China with Production
Floor Area of 18,000 square meters

Employees: Hong Kong ~15 staff
China ~100 staff & ~300 operators



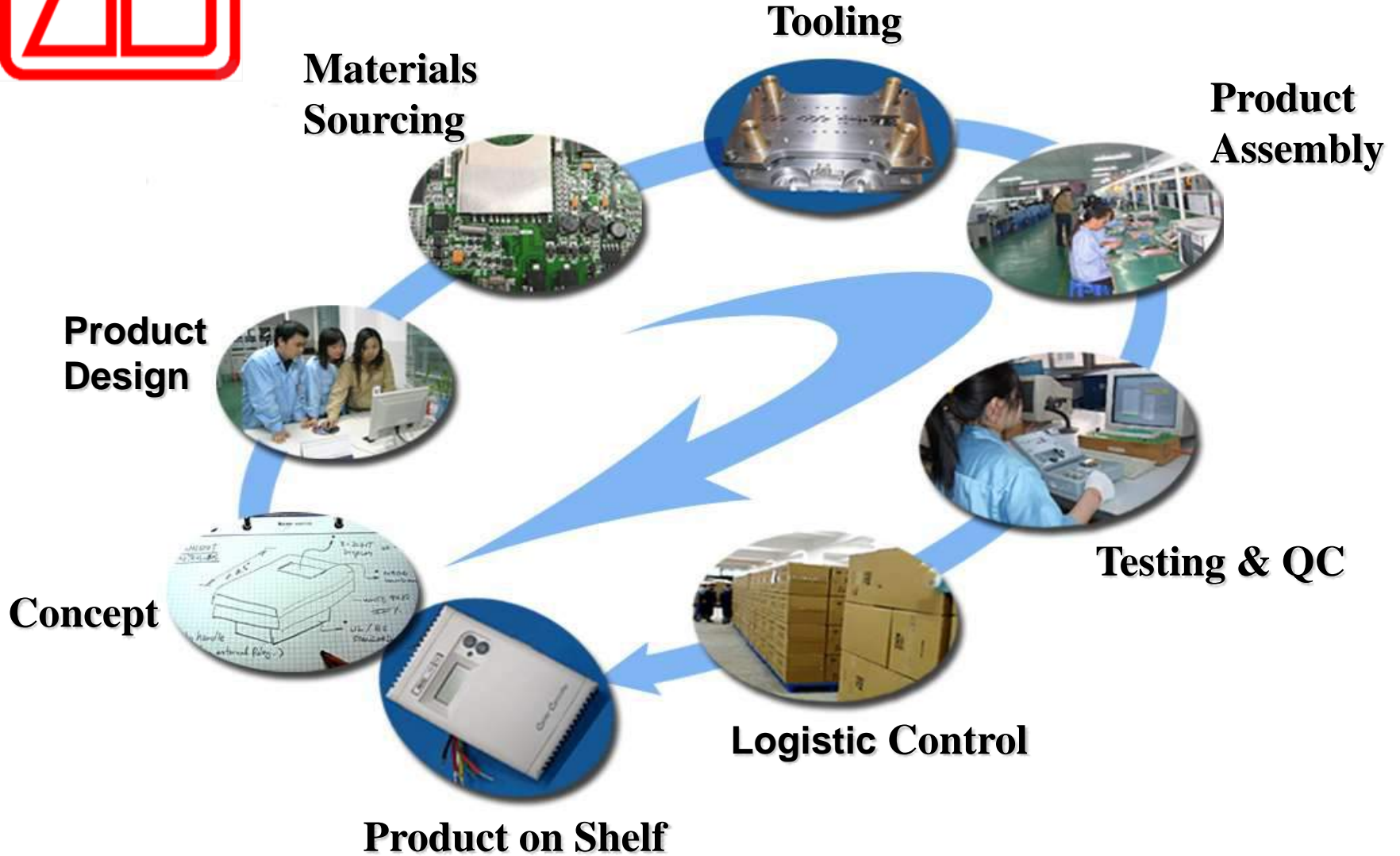


Your Reliable EMS Partner





Total Solution Provider



Quality System

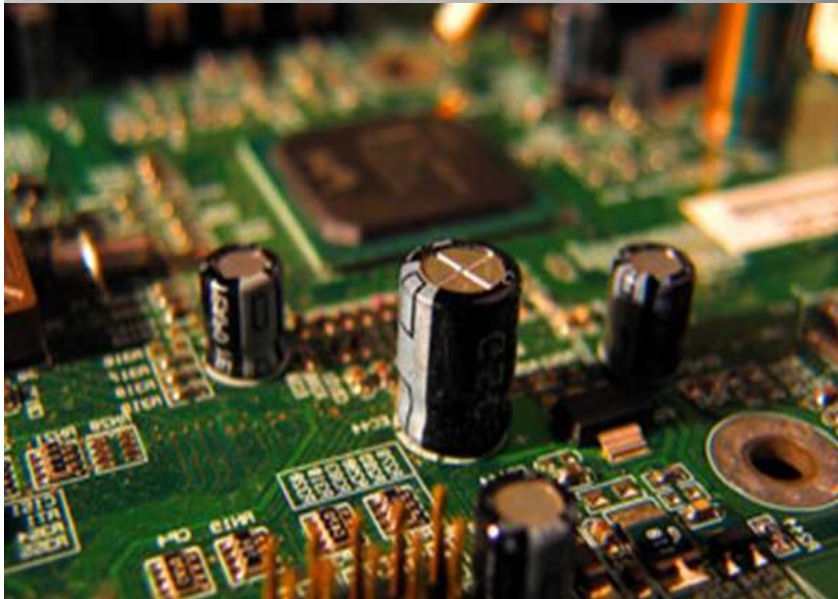
ISO-9001:2015



BSCI



Electronic Manufacturing Service



OEM/ODM Products



Automotive Product



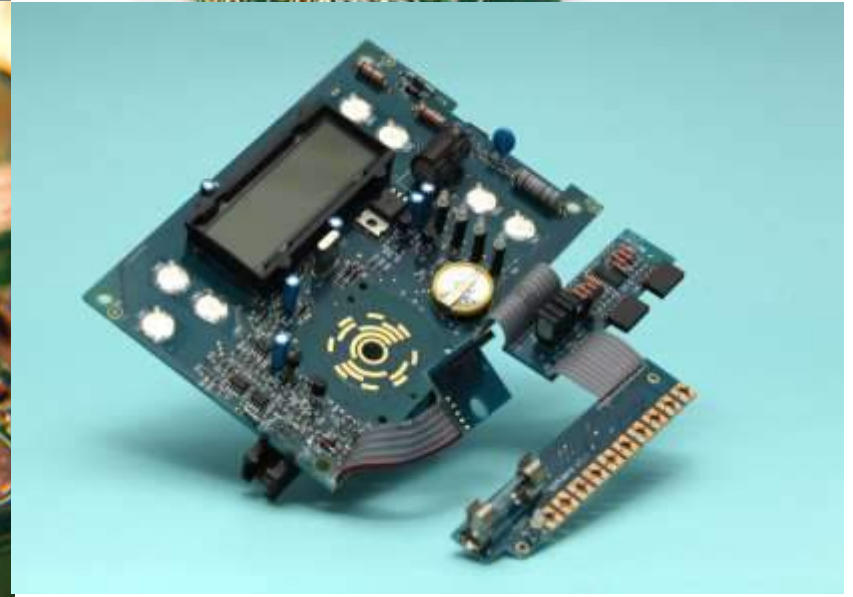
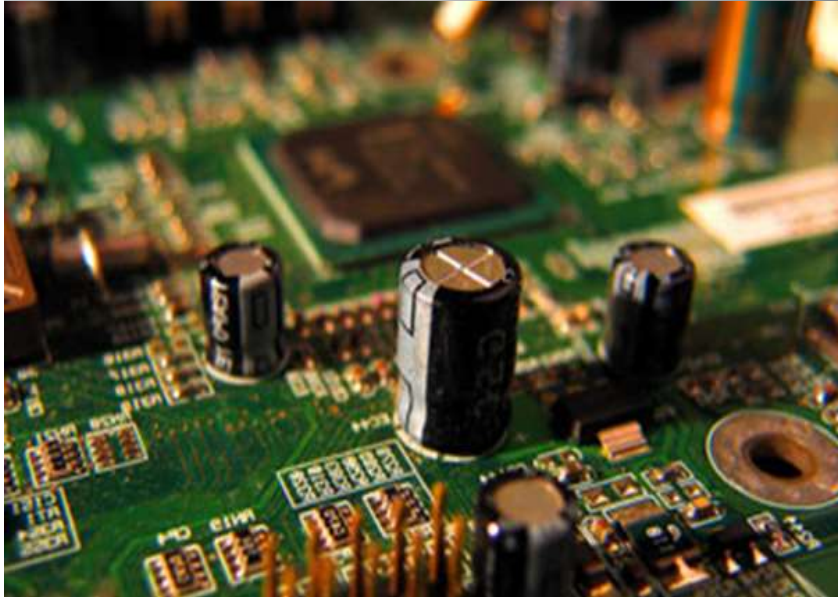


Health Product

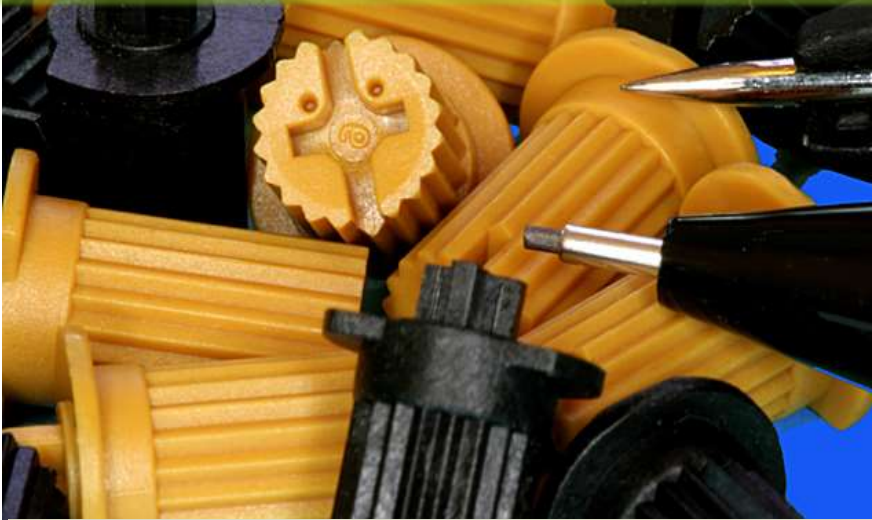
Custom-design Product



SMT & PCB Assembly



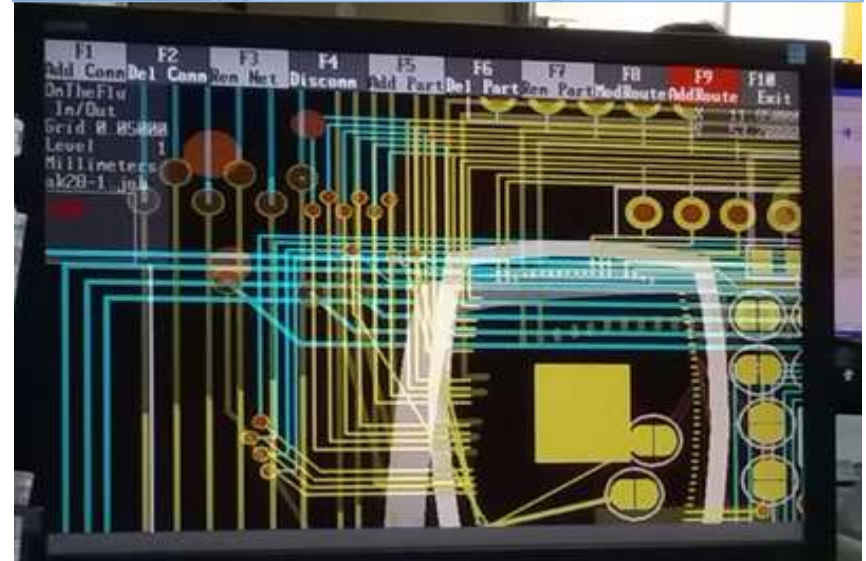
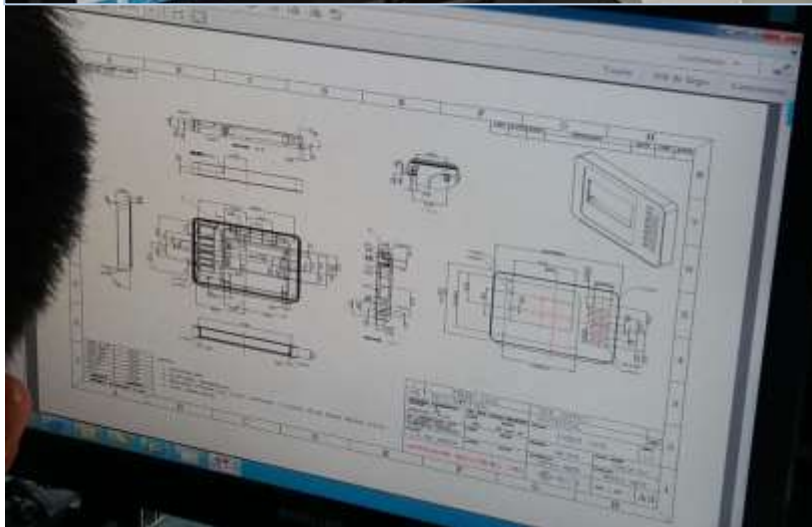
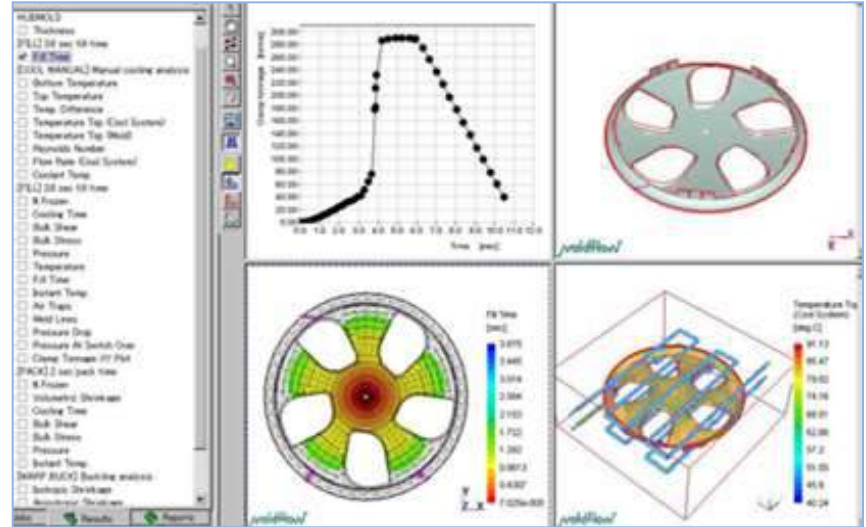
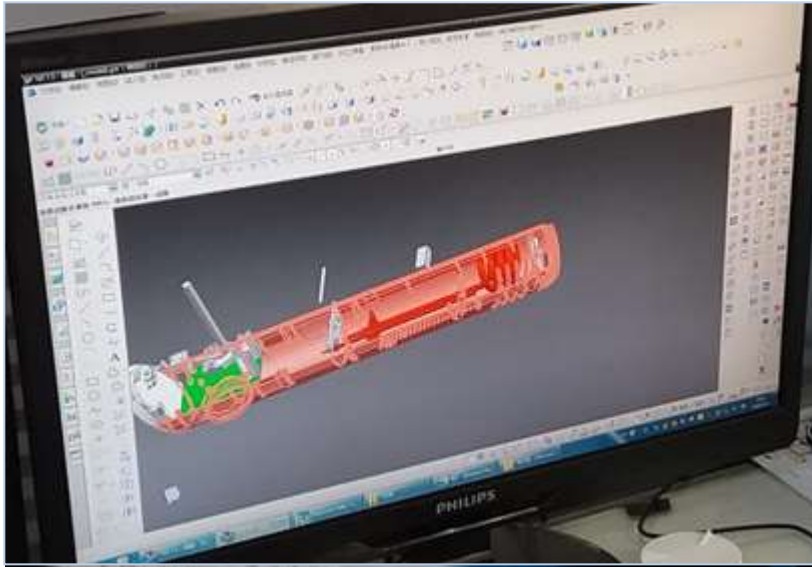
Precision Plastic Part



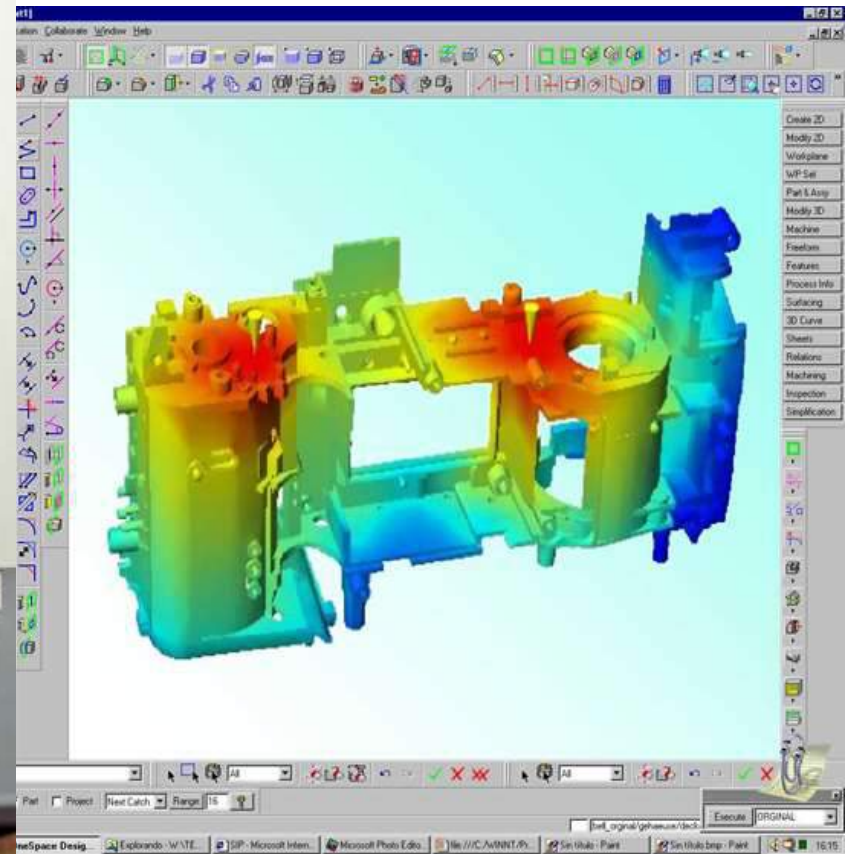
Engineering & Design



CAD-CAM Design (Electronics, PCB, Mechanical & Tooling)



Mold Flow Simulation & Reverse Engineering



Precision Plastic Injection



29 sets fully equipped German Battenfeld IMM
(various from 35 Tons to 800 Tons)



Ink-Jet/Pad Printing Spray painting



Tooling Development



Tooling Development



SMT

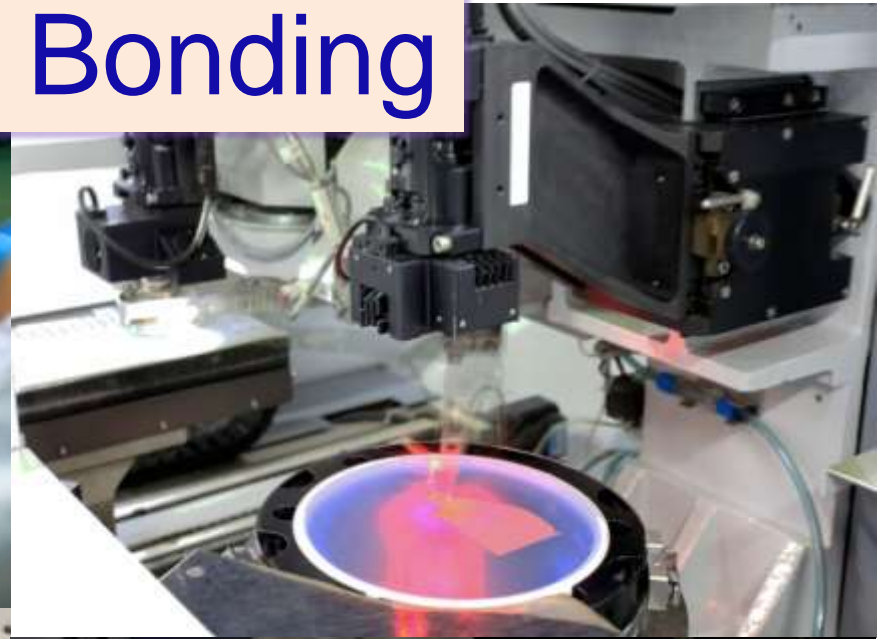
4 fully equipped SMT Lines
catering for various requirement



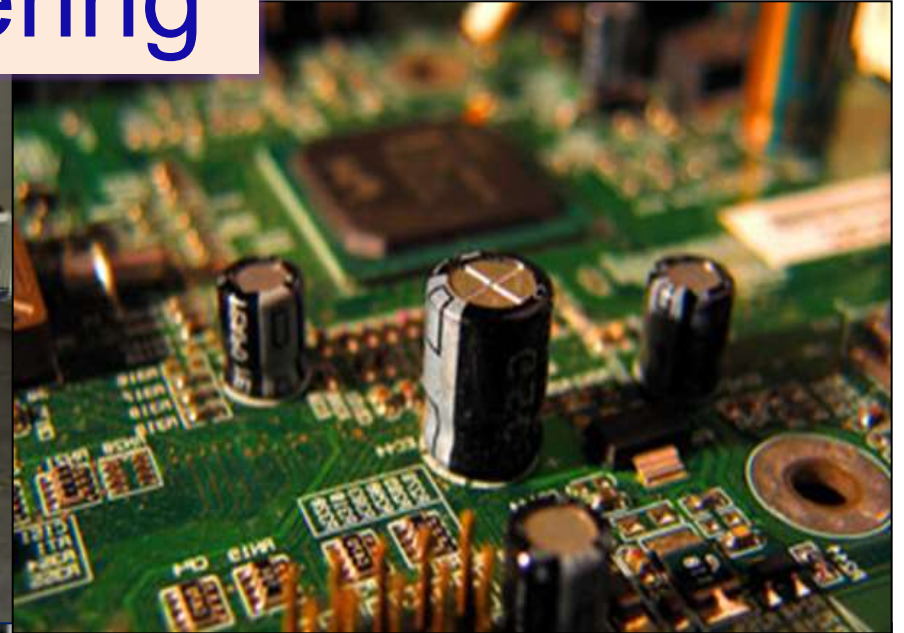
SMT



LED & COB Wire Bonding



AI & Wave Soldering



Custom Product Assembly



General Assembly



Quality Control



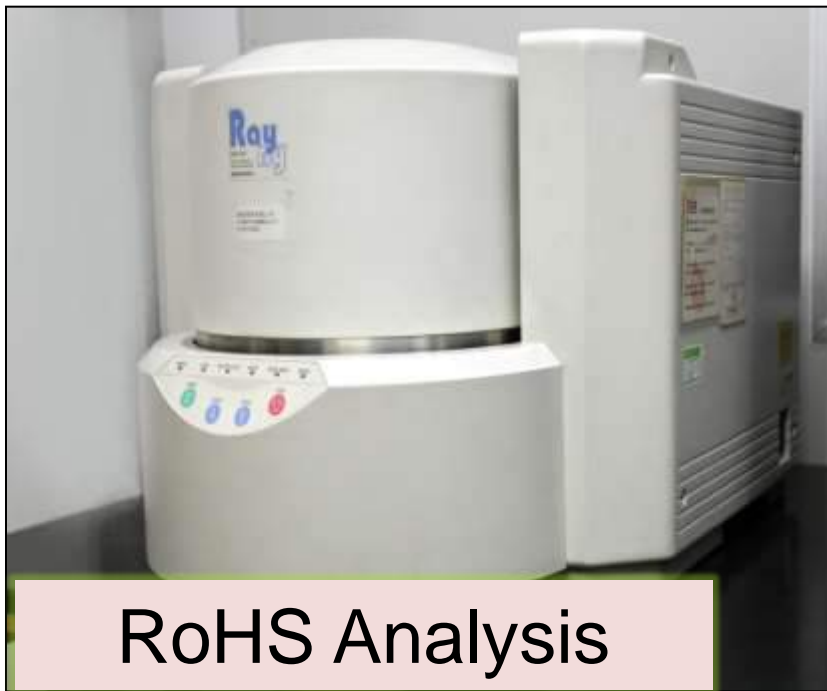
RF Testing



Quality Assurance

- ✓ Life/Aging testing
- ✓ Environmental testing
- ✓ Thermal shocking
- ✓ Humidity testing
- ✓ Salt vapor spraying
- ✓ CpK Analysis
- ✓ Fire-Retardation
- ✓ Mechanical Testing

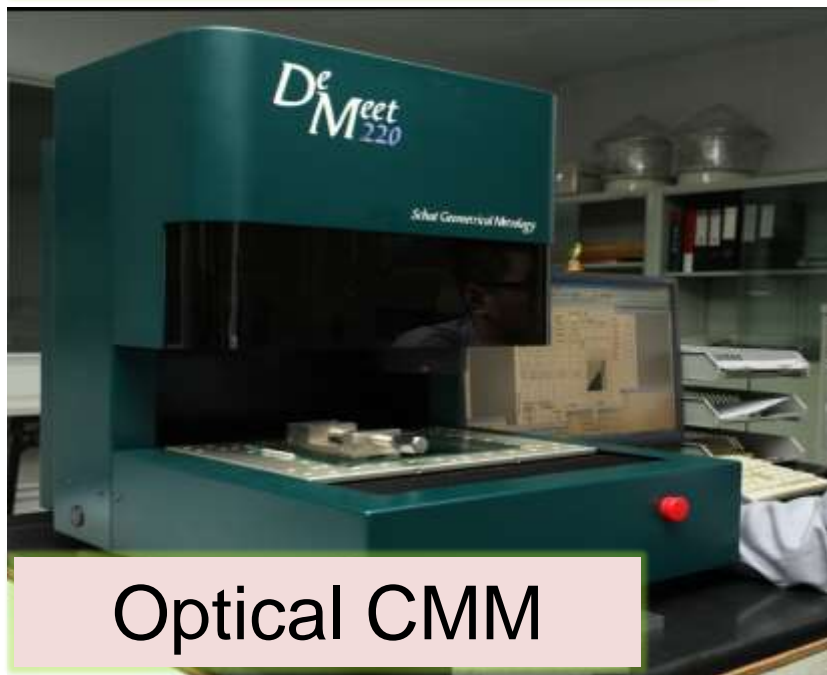




RoHS Analysis



Light Analysis



Optical CMM



Color Analysis



Thermo-shocking & Environmental Testing



Salt-vapor Testing



High/Low Temperature & Humidity Testing



Approach Industries Limited
Approach (Dongguan) Precision Industries Ltd.

Your Reliable EMS Partner

Founded in 1994