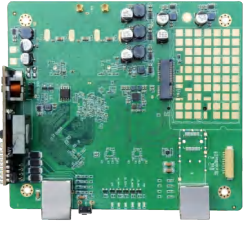
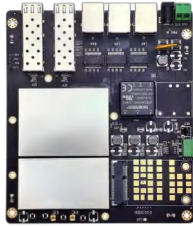




# Maxon WiFi Embedded Motherboard Series

item#	MX6022	MX6012-IS	MX-AB160-H1 2x2 Core Module	MX5012
Photo				
Chipset	IPQ6010+QCA8081 +QCN5052+QCN5022	IPQ6010+QCA8075 +QCN5052+QCN5022	IPQ6000	IPQ4028
Protocol	WiFi6 / 802.11ax	WiFi6 / 802.11ax	WiFi6 / 802.11ax	WiFi5 / 802.11ac
Memory	2*512MB DDR3 16MB Nor Flash 128MB Nand Flash	2*512MB DDR3 16MB Nor Flash 128MB Nand Flash	2*512MB DDR3 16MB Nor Flash 128MB Nand Flash	256MB DDR3 32MB Flash
Mode	Access Point, Client, WDS Access Point, WDS Client	Access Point, Client, WDS Access Point, WDS Client	-	Access Point, Client, WDS Access Point, WDS Client
Frequency Range	2.4G: 2412MHz~2472MHz; 5.8G: 5180MHz~5320MHz, 5745MHz~5825MHz	2.4G: 2412MHz~2472MHz; 5.8G: 5180MHz~5320MHz, 5745MHz~5825MHz	2.4G: 2412MHz~2472MHz; 5.8G: 5180MHz~5320MHz, 5745MHz~5825MHz	2.4G: 2412MHz~2472MHz; 5.8G: 5180MHz~5320MHz, 5745MHz~5825MHz
Wireless Rate	2.4G: 573.5Mbps; 5.8G: 1200Mbps	2.4G: 573.5Mbps; 5.8G: 1200Mbps	2.4G: 573.5Mbps; 5.8G: 1200Mbps	2.4G: 300Mbps; 5.8G: 867Mbps
Data Modulation	11n: 64-QAM MCS7 11ac: 256-QAM MCS9 11ax: 1024-QAM MCS11	11n: 64-QAM MCS7 11ac: 256-QAM MCS9 11ax: 1024-QAM MCS11	11n: 64-QAM MCS7 11ac: 256-QAM MCS9 11ax: 1024-QAM MCS11	11n: 64-QAM MCS7 11ac: 256-QAM MCS9
Transmit Power	2.4G (11ax): HT40: 24dBm@ MCS0 5.8G (11ax): HT80: 24dBm @ MCS0	2.4G (11ax): HT40: 24dBm@ MCS0 5.8G (11ax): HT80: 24dBm @ MCS0	2.4G (11ax): HT40: 24dBm@ MCS0 5.8G (11ax): HT80: 24dBm @ MCS0	2.4G: 25dBm, 5.8G: 24dBm
Receiving Sensitivity	11ax: HE20 MCS0 <-82dBm / MCS11 <-52dBm HE40 MCS0 <-79dBm / MCS11 <-49dBm HE80 MCS0 <-76dBm / MCS11 <-46dBm	11ax: HE20 MCS0 <-82dBm / MCS11 <-52dBm HE40 MCS0 <-79dBm / MCS11 <-49dBm HE80 MCS0 <-76dBm / MCS11 <-46dBm	11ax: HE20 MCS0 <-94dBm / MCS11 <-62dBm HE40 MCS0 <-89dBm / MCS11 <-60dBm HE80 MCS0 <-86dBm / MCS11 <-56dBm	11ac: VHT20 MCS0 <-88dBm/MCS8 <-64dBm VHT40 MCS0 <-84dBm/MCS9 <-61dBm VHT80 MCS0 <-82dBm/MCS9 <-57dBm
Network Port	2x2.5Gbps+RJ45/SFP	3x1Gbps RJ45+2x1Gbps SFP	-	1x1Gbps RJ45+1x1Gbps RJ45/SFP
POE	802.3af/at/bt 48-56V	\	-	802.3af/at 48V
DC Power	1x 5.08 3 Pins terminal DC24V	1x 5.08 3 Pins terminal DC9-36V	-	1x 5.08 3 Pins terminal DC24V
Power Consumption	WiFi: ≤ 15W, extended 5G Internet: ≤ 18W	WiFi: ≤ 15W, extended 5G Internet: ≤ 18W	-	WiFi: ≤ 9W
Antenna Connector	2xMMCX, dual frequency combination	2xMMCX, dual frequency combination	-	2xMMCX, dual frequency combination
UART	2.54mm 4pins	Uart interface 3Pin	-	\
RS-485	3.8mm 3pins	RS-485 3Pin	-	\
LTE	4G/5G LTE Slot M.2 B key (USB3.0 bus)	4G/5G LTE Slot Mini-PCIe (USB3.0 bus)	-	M.2 B key
SIM Card Slot	Micro SIM	Micro SIM	-	Micro SIM
Indicator	1x2.4G, 1x5.8G1, x5.8G2, 1xPower, 1x SFP, 1x4G/5G	Bicolor Status	-	6 LEDs
Button	Reset	Reset	-	Reset
Dimensions	130 x 115 x 10 mm	160 x 136 x 21.5mm	100x110mm	120x115mm
Temperature	Operating: -20°C~+70°C, Storage: -40°C~+90°C			
Humidity (Non-condensing)	Operating: 10% ~ 95%, Storage: 5% ~ 90%	Operating: 10% ~ 95%, Storage: 5% ~ 90%	Operating & Storage: 5% ~ 95%	Operating: 10% ~ 95%, Storage: 5% ~ 90%
Certification	RoHS/REACH	RoHS/REACH	RoHS/REACH	RoHS/REACH

**NANJING MAXON O.E. TECH. CO., LTD**

Tel: +86-25-8638 0932

WhatsApp & Skype: +86 132 6093 6780

Email: info@maxonc.com

Web: www.mxcomm.cn

Add: 6/F, Bldg A3, Zidong Rd, Qixia, Nanjing, 210049, China

\*Nanjing Maxon O.E. Tech. Co., Ltd. reserves all rights for final explanation.

# MAXON

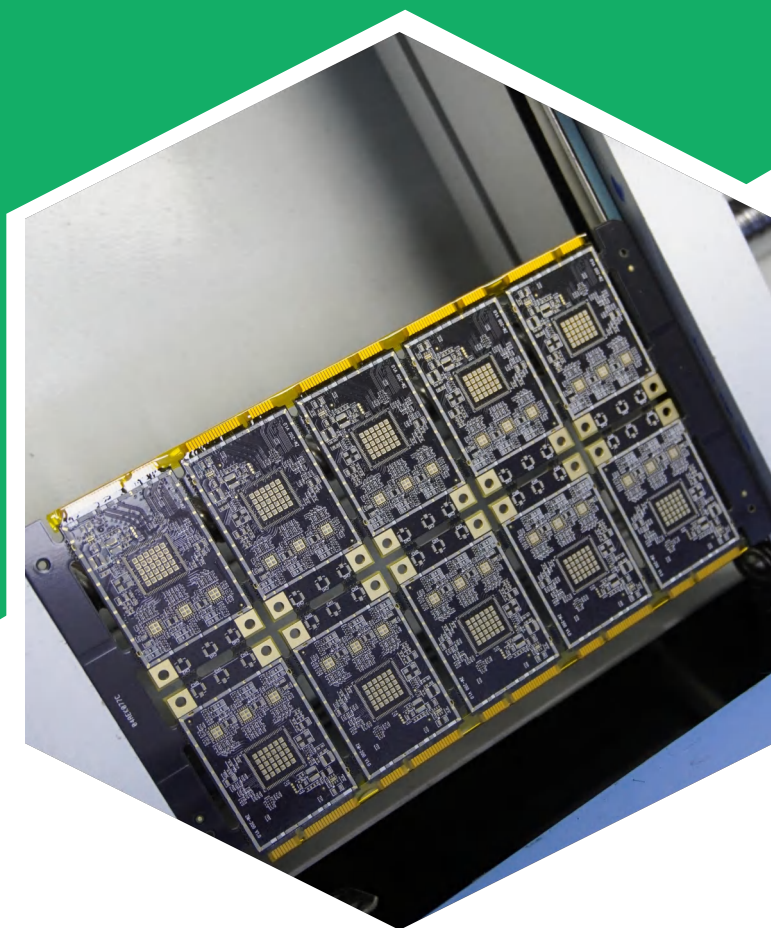
*Link Of Your Think*

Low Power  
Consumption

New  
Generation  
Tech

High  
Throughput  
Low  
Latency

Wide  
Operation  
Temp.



## Maxon Wi-Fi Motherboard & Module Series

IoT | Robots | Drones | Small & Medium Enterprise | Smart Education

Nanjing Maxon O.E. Tech. Co., LTD

