

INTRODUCTION

WE TAKE PLEASURE IN INTRODUCING OURSELVES AS A MEDIUM SIZED MECHANICAL SERVICES COMPANY ENGAGED IN MISC STEEL STRUCTURAL AND NON STRUCTURAL WORKS. WE HAVE YARDS IN TWO KEY LOCATIONS (AL QOUZ, HAMRIYAH FREEZONE) AND A THIRD ONE PLANNED IN ICAD, ABU DHABI. OUR CLIENT BASE IS WELL SPREAD ACROSS ALL SEVEN EMIRATES AND THE GREATER GULF REGION, AND WE SERVE AND SUPPORT ALL TYPES OF INDUSTRIES.

WE STRIVE TO SERVE YOUR ENGINEERING NEEDS TO THE BEST OF OUR CAPABILITIES, ENABLING YOU TO FURTHER YOUR BUSINESS. WE HAVE QUALIFIED AND EXPERIENCED PERSONNEL WHO ARE ABLE TO HANDLE ALL ASPECTS OF TECHNICAL AND COMMERCIAL ACTIVITY AND PROVIDE QUICK AND EFFICIENT SERVICES TO OUR CLIENTS. AS AN ORGANISATION, WE HAVE 'QUALITY', 'PUNCTUALITY' AND 'VALUE' INGRAINED IN OUR OPERATIONAL ETHOS. OUR EXTENSIVE AND UNIQUE EXPERIENCE ALSO ALLOWS US TO TAKE ON CHALLENGING DESIGN TASKS.

CORE BUSINESS AREAS

STEEL FABRICATION:

- Structural steel supports for building and infrastructure projects
- Various steel works for mep contractors (pipe saddles, conduits, Cable trays etc.)
- Canopies, space frames, roof structures
- Perimeter and compound wall fences and grills
- Medium to heavy concrete shutter moulds
- Walkway gratings, access platforms, trench platforms
- ACM/ACP cladding sub-framing/sub-structures
- Medium and heavy bollards
- Garbage and specialized skips

INDUSTRIAL MACHINING:

- Anchors, special bolts, brackets and grout anchors
- Flanges, shafts, couplings
- Gear cutting, rack making
- Screws, bolts, threaded rods

PRESSWORK PRODUCTION:

- Drawing and deep drawing
- Marble fixing cleats, clamps, brackets, holdfasts, washers etc.
- Cable trays, channel formwork
- Heavy gauge punching
- Presses from 50 to 300 tons

INTERIORS AND DECORATION:

- Handrails, balustrades
- Ss, brass and bronze decorative components
- Wrought iron works
- Miscellaneous works:
- Casting of ferrous and non-ferrous metals

MAJOR CLIENTS

CIVIL CONTRACTING:

- AL NABOODAH CIVIL CONTRACTING
- ARABTEC CONSTRUCTION
- ARABIAN CONSTRUCTION COMPANY
- EMIRATES CONSTRUCTION COMPANY
- AMANA STEEL AND CONSTRUCTION
- NAKHEEL CONSTRUCTION
- WCT - CEBARCO
- AL HABTOOR ENGINEERING
- GTH TECHNOLOGIES, GERMANY
- CLEMENT SYSTEMS, GERMANY
- FRAYLAND CONSTRUCTION
- AL-GHURAIR GROUP – ARABIAN ALUMINIUM
- ETA GROUP – ETA ASCON, ETA MELCO, ETA STAR
- PARKWAY CONSTRUCTION

MEP CONTRACTING:

- TRANSGULF ELECTRO-MECHANICAL
- ETA M&E
- THERMO LLC
- SIEMENS GULF
- BOND COMMUNICATION

INTERIORS AND JOINERY:

- AL HABTOOR MARBLE
- ETA JOINERY
- AMBB INTERIORS
- DEPA INTERIORS
- TAK UAE
- INTERIORS INTL
- GOLDEN ARROW
- BOND INTERIORS

STRUCTURAL STEEL AND SUPPORT SYSTEM WORKS

AL SOWAH ISLAND, ABU DHABI

AL NABOODAH / MUBADALA / KEO

Project was signed Q3, 2008. Work commenced Q1, 2009. Project is ongoing; snagging is in final stages, handing over is under process

The cumulative project value (including variations) till date stands at AED 30 Million. The project mainly consists of fabrication, supply, finishing and erection on site of Pipe Racking, Stainless Steel Cable Tray, Gratings, Road Barriers, Handrails and various complementary metal works.

The contract includes over one thousand tons of pipe racking and more than 12,000 linear meters of stainless steel cable trays. A team of at least seven engineers/supervisors have continuously been present onsite to oversee and manage progress on the contract. QC checks are performed at both our fabrication facilities as well as onsite.

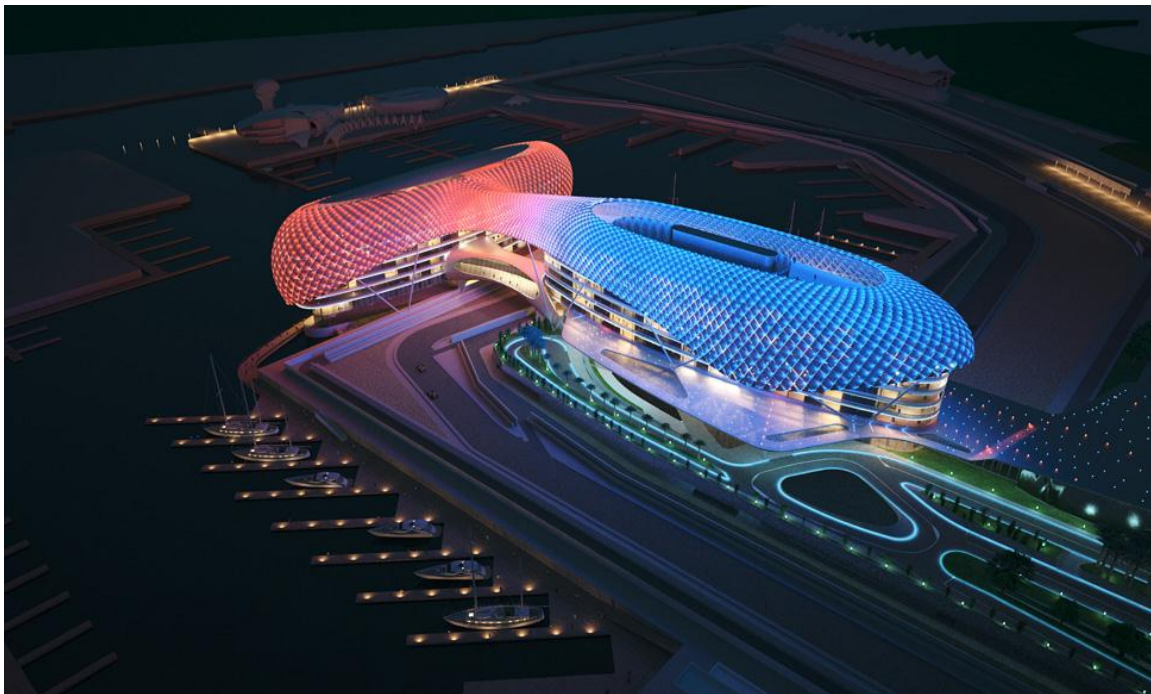
The project began with a team of 200 workers onsite and at our fabrication facility. Our workers were accommodated on site and all client HSE requirements were met. Currently, onsite staff has been reduced to less than 50 as the project is nearing completion. We have not had a single accident or injury onsite in more than one thousand days of onsite work, and have suffered a minimal number of lost time incidents, both onsite and at our facility.



OPEN GRID ACCESS FLOORING
F1 CIRCUIT, YAS ISLAND, ABU DHABI
CEBARCO-WCT / ALDAAR / TILKE

Project was signed Q1, 2009. Work commenced Q2, 2009. Project handed over Q4, 2009

The cumulative project value (including variations) invoiced was AED 1.5 Million. The project mainly consisted of fabrication, supply, finishing, erection on site and testing of Open Grid Access Flooring System (consisting of gratings, checkered plates, ladders, access platforms & hatches, conduits) and various complementary metal works. The contract covers more than 500 square meters of gratings.



ELECTRIC HOIST CRANES
DISTRICT COOLING PLANT, AL SOWAH ISLAND, ABU DHABI
KHARAFI NATIONAL / MUBADALA / EC HARRIS

Project was signed Q4, 2010. Work commenced Q1, 2011. Project ongoing

The cumulative project value (including variations) invoiced was AED 1 Million. The project mainly consisted of design, fabrication, supply, finishing, erection on site and testing of various Electric Hoists (including all rails, beams, structural supports as per hoist manufacturer's specifications) and various complementary metal works.



SUPPORT STRUCTURE FOR CURVED SCREENS
FERRARI THEME PARK, YAS ISLAND, ABU DHABI
BOND COMMUNICATIONS / ALDAAR

Project was signed Q2, 2010. Work commenced Q2, 2010. Project handed over Q4, 2010



STAINLESS STEEL MOUNTS FOR LCD SCREENS
TERMINALS 1,2 & 3, DUBAI AIRPORT, DUBAI
CONRAC MENA

Various contracts and orders, 2006 - 2010



VILLA ROOF STRUCTURES
PALM JUMEIRAH, DUBAI
AL NABOODAH / NAKHEEL

Project was signed Q2, 2005. Work commenced Q2, 2005. Project handed over Q2, 2006



PIPE SADDLES AND SUPPORTS
DISTRICT COOLING PLANT, BURJ KHALIFA, DUBAI
SAMSUNG BESIX / EMAAR

Project was signed Q3, 2006. Work commenced Q3, 2006. Project handed over Q3, 2007



**ROTUNDA STAND FOR A380 AIRCRAFT
TERMINAL 3, DUBAI AIRPORT, DUBAI
DCA**

Project was signed Q2, 2007. Work commenced Q2, 2004. Project handed over Q3



**ACCESS GRATINGS AND WALKWAYS
PALM JUMEIRAH MONORAIL AND DUBAI METRO, DUBAI
PJMC / DURL**

Project was signed Q3, 2006. Work commenced Q3, 2006. Project handed over Q4, 2006



DIVIDER WALL SUPPORTS
BURJ KHALIFA, DUBAI
BOND COMMUNICATIONS / ALDAAR

Project was signed Q2, 2006. Work commenced Q2, 2006. Project handed over Q3, 2007



VILLA ROOF STRUCTURES
SPORTS CITY, DUBAI
GTH / FRAYLAND

Project was signed Q4, 2005. Work commenced Q2, 2006. Project handed over Q4, 2009



PIPE RACKING / PIPE SADDLES

Fabrication, supply and erection of 1000+ tons of pipe racking for utility tunnels at al-Sowwah island project. Pipe rack frames fabricated in two separate sizes, transported onto site, assembled and finished with specified protective coating onsite.













CABLE TRAYS

Production, supply and installation of more than 12,000 linear meters of 316 grade stainless steel cable trays for utility tunnels at al-Sowwah island project. Cable trays are ADWEA and Etisalat approved.







WALKWAYS, TRENCH GRATINGS & ACCESS LADDERS

We have produced, supplied and installed thousands of square meters of gratings of various types and specifications for various projects in the UAE. We are well experienced with manufacturing and installing gratings and walkways, along with supports/bracings, ladders, railings etc.

Major projects where we have installed gratings:

- Palm Jumeirah Monorail
- Dubai Metro
- Dubai Airport – Terminals 1 & 3
- Burj Khalifa
- Yas Island – F1 circuit and Ferrari world
- Al Sowwah Island







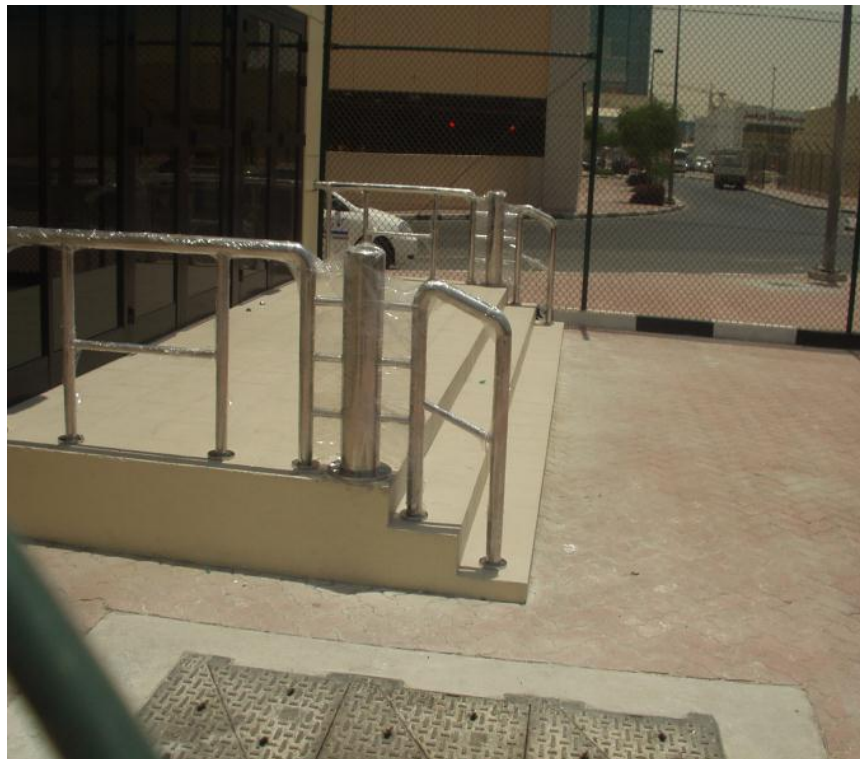












SPECIAL FABRICATION

We undertake special fabrication jobs, including design and development. We have taken on all sorts of challenges such as 50 meter high stackable masts, giant molds for precast pontoon sections, suspended navigation lights, support structures for large curved screen installations.











