

博兴县浩佳板业有限公司
BOXING HAOJIA STEEL CO., LTD

地址: 山东省滨州市博兴县店子镇工业园
Add: Dianzi Industrial Park, Boxing County, Binzhou City, Shandong Province, China.
销售热线/Sales hotline: 0543-2261999
传真/Fax: 0543-2166698
WhatsApp/WeChat: +86 15318217777
公司邮箱/E-mail: haojiasteel@gmail.com
公司网址/Web: www.haojiasteel.com



浩佳板业
HAOJIA STEEL

博兴县浩佳板业有限公司
BOXING HAOJIA STEEL CO., LTD



HAOJIA STEEL

HAND IN HAND DEVELOPMENT
WIN WIN COOPERATION



ABOUT US >>> 关于我们

博兴县浩佳板业有限公司，聚集尖端科技人才，以前沿科技举牌踔越成就，以**工匠精神铸造完美品质**，荟萃非凡智慧，匠造卓越品质。博兴县浩佳板业有限公司成立于2018年1月，是一家集**研发、生产、加工、销售**为一体的生产企业。公司坐落于中国百强县博兴县店子工业园，**地处鲁北经济新区**。主要生产、研发、销售各种工程特种彩钢、家电板、写字板、净化板、氟碳板、高铝镁板、铝镁锰板、风压板、砂面板、五色色印花板、瓦楞板等产品。公司拥有60万吨彩涂生产线，印花生产线。

精工匠造的坚守之上，是浩佳夜以继日的热血倾注。产品好评如潮的背后，是**高标质量严控的总动员**。公司经过多年的经营积累，优质客户不断增加，产品远销东南亚、中亚、非洲、南美，**市场规模不断扩大**。

立业征程，肇梦而行。浩佳坚持**扎实创新，磨炼品质，积淀磅礴力量，承载无尽希望**。

公司以良好的企业文化氛围为主线，树立**务实、严谨、诚信、高效**的敬业精神，秉持**“敬业奉献，追求卓越”**的企业发展意识，以**“用心才能创新，创新永无止境”**为经营理念，引导员工**持续创新，实现其专业技能化管理**，量化操作环节，推行**岗位责任制**，围绕**安全环保**生产，依托**信誉抓质量**，**向上与下游客户形成共赢**，赢得了客户的认可。

Boxing Haojia Steel Co., Ltd. gathers cutting-edge technological talents, supports brilliant achievements with cutting-edge technology, and unveils infinite wisdom and composure. Gathering extraordinary wisdom and crafting excellent quality. Boxing Haojia Steel Co., Ltd. was established in January 2018. It is a production enterprise that integrates the production and processing of color coated steel plates, research and development of new building materials, and steel plate trade. The company is located in Dianzi Industrial Park, Boxing County, one of the top 100 counties in China, and is located in the North China Economic Zone. It mainly produces, researches, and sells various engineering thick color steel, home appliance boards, writing boards, purification boards, fluorocarbon boards, high weather resistant boards, aluminum magnesium manganese boards, mesh boards, sand panels, five color printed boards, corrugated boards, and other products. The company has a 600000 ton color coating production line and a printing production line.

Above the perseverance of precision craftsmanship, Haojia's passion is poured day and night. Behind the overwhelming product reviews is the steady and steadfast quality control of Haojia. After years of business accumulation, the company has continuously increased its high-quality customers, and its products are exported to Southeast Asia, Central Asia, Africa, and South America, with a constantly expanding market size.

Embark on a career journey and pursue your dreams. Haojia insists on solid innovation and honing quality. Accumulate magnificent energy and carry endless hope.

The company takes a good corporate culture atmosphere as the mainstream, establishes a pragmatic, rigorous, honest, and efficient spirit of dedication, adheres to the enterprise development awareness of "dedication, pursuit of excellence", and takes "innovation can only be achieved with dedication, and innovation is endless" as the business philosophy. It guides employees to constantly innovate, implements scientific and standardized management, quantifies operational processes, implements a job responsibility system, focuses on safety and environmental protection to focus on production, relies on reputation to ensure quality, forming a win-win situation with upstream and downstream customers and winning their recognition.

公司自成立以来，我们在“致富思源，富而思进；扶危济困，共同富裕；义利兼顾，德行并重；发展企业，回馈社会”的光彩理念指引下，凭借着“诚信、务实、创新、高效”的企业精神，通过广大员工的努力拼搏，使不足百人的创业型公司，发展成为具有区域影响力的规模化企业，实现了跨越式发展，为我市经济发展做出了我们公司应有的贡献。

以人力资源为企业发展第一要务；制定了“培养关键人才、用好现有人才、储备未来人才”的用人战略，通过企业文化的建设，培养了一大批高素质、高能力的优秀员工，培育了一支高效的企业团队，有效增强了企业的综合实力，提升了企业的竞争和名度；经过多年的努力奋斗，随着企业实力的不断增强，公司已连续多年被评为十佳知名企业、十佳慈善企业、中国优秀民营企业……这些成绩的取得凝聚着我们的共同努力和同舟共济的奉献，我代表公司董事会对为企业发展做出卓越贡献的创业者，和共创辉煌未来的全体员工表示衷心的感谢。

“天行健，君子以自强不息”；我坚信，我们有一支自强不息、敢于亮剑、敢于拼搏、敢于攻克、敢于超越的高效精英团队，我们将在发展中把我们企业品牌的更响，打造的更靓。忆往昔，我们豪情满怀，望未来，我们信心百倍，让我们在企业精神的指引下，坚定信心，同心同德，为全面落实企业的发展战略目标和创建百年企业的长远发展愿景而努力奋斗！

Since its establishment, we have been guided by the glorious concept of "thinking about the source of wealth, thinking about progress while getting rich; helping the needy, and achieving common prosperity; balancing righteousness and benefit, and valuing morality; developing the enterprise and giving back to society". With the spirit of "integrity, pragmatism, innovation, and efficiency" and the hard work of our employees, we have developed a start-up company with less than a hundred employees into a large-scale enterprise with regional influence, achieving leapfrog development and making our company's due contribution to the economic development of our city.

Making human resources the top priority for enterprise development. We have formulated an employment strategy of "cultivating key talents, making good use of existing talents, and reserving future talents". Through the construction of corporate culture, we have cultivated a large number of high-quality and highly capable outstanding employees, cultivated an efficient corporate team, effectively enhanced the comprehensive strength of the enterprise, and enhanced its competitive reputation. After years of hard work and struggle with the continuous enhancement of enterprise strength, the company has been rated as one of the top ten well-known enterprises, one of the top ten charitable enterprises, and one of the outstanding private enterprises in China for many consecutive years. The achievement of these achievements embodies our joint efforts and shared dedication. On behalf of the company's board of directors, I express our sincere gratitude to the entrepreneurs who have made outstanding contributions to the development of the enterprise and all the employees who have created a brilliant future together.

"Heaven moves healthily, and a gentleman never stops striving for self-improvement"; I firmly believe that we have an efficient team of employees who are constantly striving for self-improvement, daring to shine, daring to fight, daring to conquer, and daring to surpass. We will make our corporate brand louder and more beautiful in our development. Looking back on the past, we are full of enthusiasm and looking forward to the future. With a hundred times more confidence, let us, guided by the spirit of the enterprise, strengthen our confidence, work together, and strive to comprehensively achieve the development strategic goals of the enterprise and create a long-term development vision for a century-old enterprise!



A 彩涂板 PPGI&PPGL STEEL

(PRE-PAINTED GALVANIUM STEEL AND PREPAINTED GALVANIZED STEEL)



彩涂钢板的基板为冷轧基板，热镀锌基板和电镀锌基板。涂层种类可分为聚酯、硅改性聚酯，偏苯二基丙烯酸酯和聚酰胺。彩涂钢板的表面状态可分为涂膜型、压花型和印花板，彩涂钢板广泛用于建筑家电和交通运输等行业。对于建筑业主要用于钢结构厂房、机场、冷库和轻高等工业及商业建筑的屋顶墙面和门等，民用建筑采用彩涂板的较少。它与普通钢板在材料上的构成不同，涂装后可以吸磁。

规格特点：

1. 重量轻：10-14千克/平方米，相当于砖墙的1/30
2. 隔热保温：芯材导热系数： $\lambda < 0.041\text{W/mk}$ 。
3. 强度高：可作天花吊顶结构材料承重，抗弯抗压，一般房屋不用梁柱。
4. 色泽鲜艳：表面涂层装饰，彩涂镀锌钢板使用寿命可达10-15年。
5. 安装便捷快捷：施工周期可缩短40%以上。
6. 耐腐蚀：(D1)32.0(省消防产品质量站)。



The substrate of the color coated steel plate is a cold rolled substrate, a hot-dip galvanized substrate and an electrogalvanized substrate. The coating types can be divided into polyester, silicon-modified polyester, polyvinylidene fluoride and glassflit. The surface state of color-coated steel sheets can be divided into coated sheets, embossed sheets and printed sheets. Color-coated steel sheets are widely used in construction appliances and transportation industries. For the construction industry, they are mainly used in steel structures, airports, warehouses and freezers. For roofs and doors of industrial and commercial buildings, there are fewer color steel plates for civil buildings. It differs from glassic steel in the composition of the material. The magnet can be sucked.

Specifications and features:

1. Light weight: 10-14 kg / square meter, equivalent to 1 / 30 of the brick wall
2. Thermal insulation: Thermal conductivity of core material: $\lambda < 0.041\text{w/mk}$.
3. High strength: It can be used as a load-bearing structure for ceilings, bending and compression; general houses do not use beams and columns.
4. Bright color: no need for surface decoration, color galvanized steel anti-corrosion layer is maintained for 10-15 years.
5. Flexible and quick installation: the construction period can be shortened by more than 40%.
6. Oxygen index: (D1) 32.0 (provincial fire protection product quality inspection station).

A 彩涂板 PPGI&PPGL STEEL

(PRE-PAINTED GALVANIUM STEEL AND PREPAINTED GALVANIZED STEEL)

产品简介：

彩涂钢板的基板为冷轧基板，热镀锌基板和电镀锌基板，彩涂板的基板为铝基。

涂层种类可分为：

聚酯（PE）附着力良好，在成型性和室外耐久性方面尚较宜，耐化学药品性中等。使用寿命7-10年。

硅改性聚酯（SMP），涂膜的硬、耐蚀性和耐热性良好，以及良好的室外耐久性和耐老化性，光泽保持性和柔韧性有。使用寿命10-15年。

高耐候聚酯（HDP）室外耐候性优良，具有很高的耐久性，其主要性能介于聚酯和高耐候之间。使用寿命10-12年。

聚酰胺类（PVDF）具有良好的成型性和颜色保持性，优良的室外耐久性和耐老化性，抗沾污性，颜色有。使用寿命20-25年。

彩涂钢板的表面状态可分为涂膜型、压花板和印花板，彩涂钢板广泛用于建筑家电和交通运输等行业，对于建筑业主要用于钢结构厂房、机场、冷库和轻高等工业及商业建筑的屋顶墙面和门等。

彩涂漆涂层钢板具有较广泛的用途

优异的耐候性、耐蚀性、高加工性和美观的外观，以其优异的品质包括建筑内、外装饰，家用产品和电气器具用品等多方面的用途上

彩涂漆涂层钢板的产品介绍

彩涂漆涂层钢板是以热镀锌钢板为基材，经过多项酸洗、清洗、化学转化处理，然后对钢板进行连续酸洗、清洗、磷化，彩涂钢板具有优良的装饰性、抗酸性、耐碱性、耐盐全、以色彩鲜艳（可保持15年以上）、使用寿命长（30-50年）、用途广，成为当今世界建筑业广泛应用的优选产品。

彩涂漆涂层钢板的主要用途

建造别墅，工业厂房、商业、住宅、仓库、冷库、船仓、内装壁材、天花板、隔板、防火门、隔板、招牌、燃油/瓦斯锅炉、米桶、原有建筑加固等工程，可灵活适用于任何建筑。

彩涂漆涂层钢板的产品优势

无污染、经济性；能减少有关设备的投资费用和工作人员，缩短工作周期以及改善工作而提高经济性，今后因为提高保护环境的认识和加强工业管性，所以更需要彩色钢板。

颜色识别图表

COLOR IDENTIFICATION MAPS

 草绿色 M-GREEN	 沙漠黄 YELLOW SAND	 信号黄 SIGNAL YELLOW	 金黄色 GOLDEN YELLOW	 蜜黄色 HONEY YELLOW	 土黄色 SALLOW	 赭色 BISE	 浅橙黄 LIGHT ORANGE	 黄橙 YELLOW ORANGE
 桔红色 ORANGE	 朱红 SCARLET	 淡橙 PALE ORANGE	 桃红色 SALMON	 火焰色 FLAME COLOR	 淡蓝色 LIGHT BLUE	 天蓝色 AZURE	 绿松石色 TURQUOISE BLUE	 深蓝色 SLATE BLUE
 凯撒绿 KATHALE GREEN	 祖母绿 EMERALD	 暗绿色 OLD GREEN	 暗褐色 SHAGREEN	 黄褐色 HAZEL	 灰绿色 OLIVE	 黑色 BLACK	 钢灰色 STEEL GRAY	 暗灰色 DARK GRAY

由于印刷颜色与油漆颜色有差别，彩色卡仅供参考，请以实物为准！

Due to the difference between the printing color and the color of the paint, the color card is for reference only, please press in kind!

A 彩涂板 PPGI&PPGL STEEL

(PRE-PAINTED GALVANIZED STEEL AND PREPAINTED GALVANIZED STEEL)

INTRODUCTION

Pre-painted galvanized steel refers that the surface pretreatment of base plate, covering one layer or two layers (more than two layers when necessary) organic coating on the surface with the method of continuous roller coating and then conduct drying and solidifying.

Compared with single part spraying or brushing on the surface of forming mill, the coating quality of color-coated steel plate is more uniform, stable and ideal. Pre-painted steel plate is characterized of excellent decoration, moldability, corrosion resistance, strong coating adhesive force and can keep the result later for a long time. Since color-coated steel plate has not only mechanical strength and shaping performance of steel plate but also favorable decoration and corrosion resistance of organic material, it can realize highly effective construction and husband the energy prevent the pollution caused by second process and other favorable economic benefits. Currently, it has become the ideal composite material in construction, household appliance, light industry, machinery and electronics and other industries.

Application in electrical appliance

Refrigerator, display cases of frozen food, washing machines, electric ovens, pan recorders, amplifiers, auto booths, air-conditioners, electronic computers, duplicating machines, switch cabinets, instrument cabinets, electric fan, dust collector, etc.

Applications in the transportation industry

Car ceilings, back boards, boarding, interior decorating plates, vehicle shells, trunk plates, passenger cars, instrument plates, shells of control consoles, trailers, trams, train ceilings, partitions, inner walls, doors, inner device of vehicle, color partitions of steamship, ship furniture and floors, containers, etc.

Applications in the sheet metal processing and furniture

Ventilation heating stoves, petroleum furnaces, shell of water boilers, shell of electric water heaters, counters, racking, signboards, binding, lighting lamp, wardrobe, sofas, chairs, lockers, file cabinets, book shelves, etc.

Applications in other aspects

Shells of musical instrument, electronic organs, weight counts, dustbins, gauges, instrument plates, shell of vacuum flasks, photographic equipment, typewriters, bulletin boards, watches, lighters, packing containers, etc.

Technical indicators:

1. Base plate

According to JIS G3302 (JIS G3318) standards.

Zinc coating: 230, 240, 250, 280, A230, A240, A250, A280

2. Coating

Pre-painted steel sheet supply the goods accord with the more strict internal control standard, which is established according to national standard. Paints variety: Polyester for internal and external use, silicon modified polyester, highly durable polyester, epoxy resin, alkyd, ethylene resin, polyepylene, polyvinylidene fluoride and fluorocarbon.

Coating color: it is selected according to customer requirements.

Coating structure: 2/1, 2/2

Coating thickness: Top side >> 20um, back side is 5-15um, or it is selected according to customer requirements.

技术参数 Specification

规格 Size (mm)	基板 Base plate		涂层厚度 Hot-dipped galvanized steel sheet 热浸镀锌板
厚度 Thickness	0.12-1.50MM		热浸镀锌板 Hot-dipped aluminum zinc steel sheet 热镀锌铝板
宽度 Width	700-1250MM	颜色 Color	热浸镀锌铝板 Hot-dipped aluminum zinc steel sheet RAL, card no. or color samples
涂层 Coating	两涂两烘 Two-coating and two-drying	表面涂层 Top coating	5-10-20UM
面 Top side	两涂两烘 Two-coating and two-drying	背面涂层 Back coating	5-10um
面 Back side	一涂一烘 one coating and one	卷内涂 (COIL ID)	500-1000MM
80%抗弯强度	≥30	硬度硬度 Rockwell hardness	≤2H
80%光泽度	40-70		
	≥40		

B 镀锌板 GI, HGI, CGI STEEL

(HOT DIPPED GALVANIZED STEEL)



B 镀锌板 GI, HGI, CGI STEEL

(HOT DIPPED GALVANIZED STEEL)

镀锌板

应用描述

热浸镀锌钢板平整，外观亮丽，以其良好的耐腐蚀性和加工性能被广泛应用于油漆基板、建筑、家电、汽车、装备制造等行业。

建筑

屋面、墙皮、通风管道、雨水槽、下水道、隔墙等；

船舶制造业

汽车、火车等各种车辆的内外壳和内部结构件，船舶的顶棚及隔舱等；

容器制造业

制作石油容器和各种化工原料的盛装桶、工业槽、水罐、军工的子弹筒、火药桶、啤酒的发酵缸、粮仓、配电箱、集装箱、油桶等；

家电、家具

洗衣机、电冰箱、空调和吸尘器的罩板外壳；衣柜、桌子、床头柜、档案柜、文件柜、书架等各类家具；

其他

机械构件、马达制造外壳、工农业各种烟筒、管道、机械冷冻库等。

Galvanized plate:

Application field

With even surface and beautiful appearance, hot dip galvanized plate is widely used in pre-painted base plates, construction, household appliances, automotive, container manufacturing and other industries.

Construction:

Roofing, walls, ventilation ducts, rain troughs, sewers, partition studs, etc.

Vehicle and vessel manufacturing:

Shell and internal structural parts of cars, trains and other vehicles. Top covers and partitions of vessels.

Container manufacturing:

Containers for producing petroleum and barrels for containing different kinds of chemical raw materials, industrial troughs, water tanks, military bullet cases, fermentation vats for beer, barns, distribution cabinets, containers, fertilizer boxes, etc.

Household appliances, furniture:

Backboard shells of washing machine, refrigerator, air conditioning and dust collector, wardrobes, tables, night tables, file cabinets, file cabinets, file boxes, book shelves and other furniture.

Others:

Machinery structural parts, manufacturing shells of motor, different kinds of smoke tubes, pipes, mechanized refrigerated warehouse, etc.

技术参数 Specification

厚度 Thickness	0.15-1.2MM	锌层种类 Variety of zinc coating	锌、铝锌硅 Zinc, Aluminum zinc silicon
宽度 width	700-1250MM	表面状态 Surface condition	正常锌花、小锌花、无锌花 Regular spangle, Minimal spangle and zero spangle
涂层重量 coating weight	30-120g/m ²	表面处理 surface treatment	钝化 Chromated
卷重 weight	MAX10MT	卷内径 COIL ID	508/610MM

C 印花板 PRINTING PATTERN PPGI & PPGL STEEL

(PRINTING PATTERN PREPAINTED GALVANIZED STEEL & GLVALUME STEEL)

BRICK SERIES/WOOD SERIES/CAMOUFLAGE SERIES

砖纹系列/木纹系列/迷彩纹系列 (可根据用户需求定做)

(CAN BE CUSTOMIZED ACCORDING TO USER NEEDS)



砖纹1
BRICK PATTERN 1



红砖
RED BRICK



仿古砖纹
ANTIQUÉ BRICK PATTERN



大灰砖
BIG GRAY BRICK



仿古青砖
ANTIQUÉ BLUE BRICK



白砖纹
WHITE BRICK



红柳
RED WILLOW



红拼
RED SPELL



红檀木
RED SANDALWOOD

C 印花板 PRINTING PATTERN PPGI& PPGL STEEL

(PRINTING PATTERN PREPAINTED GALVANIZED STEEL & GLVALUME STEEL)

BRICK SERIES/WOOD SERIES/CAMOUFLAGE SERIES

砖纹系列/木纹系列/迷彩纹系列 (可根据用户需求定做)
 (CAN BE CUSTOMIZED ACCORDING TO USER NEEDS)



九条柚木
NINE ELM



橡木
OAK



胡桃1
WALNUT 1



迷彩1
CAMOUFLAGE 1



迷彩2
CAMOUFLAGE 2



迷彩3
CAMOUFLAGE 3



迷彩4
CAMOUFLAGE 4



迷彩5
CAMOUFLAGE 5



迷彩6
CAMOUFLAGE 6

D 网纹板

(CHEQUERED PLATE)

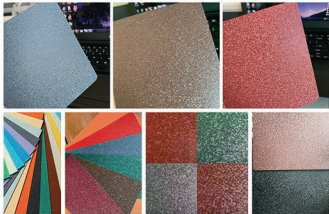


网纹系列涂板有时称为橘面彩板。网纹彩板是指板表面涂覆有特种性能漆膜。在漆液固化初期，表面漆液先固化收缩，在固化后期，表面再吸收下层的漆液，形成橘面彩板是一种对于漆液膜表面具有橘纹效果的成膜状况（橘毛状、网纹状），表面凹凸律效果。

成膜漆膜出来时表面具有皱状状（橘毛状、网纹状）外观，手感柔滑，并有美观、耐脏、防划伤等显著优点，给建筑物或者家用电器高品质的外观效果。

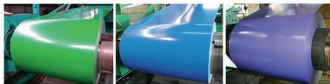
The mesh series color coated plate is sometimes called a subtle color coated plate or a wrinkled color coated plate. The surface of the steel plate is coated with special performance paint. In the early stage of paint curing, the surface paint first solidifies and shrinks, and in the later stage of curing, the surface absorbs the shrinkage of the lower layer, forming a textured color coated plate. After drying, the coating surface has a textured effect, forming a wrinkled shape (fully, reticulated), showing a three-dimensional effect.

After the finished product is painted, the panel has a wrinkled (fully, mesh like) appearance, a smooth feel, and significant advantages such as aesthetics, wear resistance, and scratch resistance, bringing high-quality appearance effects to buildings or household appliances.



E 彩铝板 PPAL STEEL

(PREPAINTED ALUMINUM STEEL)


彩铝板

基材：铝板 厚度 0.25-1.5毫米 重量 500-1250毫米

PPAL

Pre-painted aluminum steel Base plate: Aluminium steel Thickness: 0.25-1.5mm Width: 500-1250mm


 金线米黄
 Gold line beige

 大花白
 Big white

 沙安米黄
 Sha Anmi beige

 挪威红
 Norwegian red

 紫罗兰
 Violet

E 彩铝板 PPAL STEEL

(PREPAINTED ALUMINUM STEEL)

氟碳涂料是PVDF树脂主要是由偏氟乙烯均聚物或者偏氟乙烯与其他少量含氟乙烯基单体的共聚物涂料。

氟碳基料的化学结构中以氟/碳化合键结合。这种化学结构上的稳定与牢固使氟碳涂料的物理性质不同于一般涂料，除了在机械性能方面的耐磨性，抗冲击性具有优良的性能外，特别是在恶劣气候和环境显示出长久的耐候性。抗紫外线性能，高温烘烤或撞击，涂层内分子结构紧密，具有耐候性。

氟碳涂层按表面涂层结构可分为无机氟碳和有机氟碳两种。1965年美国Pennwalt化学公司首先将氟碳涂料用于满足建筑室内外铝材的涂装。广泛颜色的选择，美国注重的外观，及耐久性为各地许多宏伟的幕墙建筑增添了光彩。涂料制造商对涂层使用寿命的保证开始为10年，15年后发展到能保证20年以上。美国研究机构对氟碳涂料及超耐候涂料，一般涂料做过测试比较，分别涂层的样品放在美国佛罗里达州的热阳光照射，以及在潮湿含盐空气的恶劣环境下暴露12年，实际证明氟碳涂料的稳定性和耐久性比其他两种涂料高100%至200个百分点。氟碳涂料保证了在各种恶劣环境下使用。

Fluorocarbon coating refers to PVDF resin, which mainly refers to coatings made of homopolymers of vinylidene fluoride or copolymers of vinylidene fluoride and other small amounts of fluorinated vinyl monomers.

The chemical structure of fluorocarbon based materials is bonded by fluorine/carbonization bonds. The stability and firmness of this chemical structure make the physical properties of fluorocarbon coatings different from general coatings. In addition to excellent mechanical wear resistance and impact resistance, it also exhibits long-lasting resistance to fading and UV radiation, especially in harsh climates and environments. After high-temperature barbecue, the molecular structure of the coating is tightly packed and has weather resistance.

Fluorocarbon coatings can be divided into two types based on the surface film-forming structure: traditional fluorocarbon coatings and nano-fluorocarbon coatings. In 1965, Pennwalt Chemical Company in the United States first used fluorocarbon coatings to meet the coating requirements of indoor and outdoor aluminum materials in buildings. The wide selection of colors, the dignified appearance of the United States, and durability added luster to many magnificent curtain wall buildings around the world. The coating manufacturer's guarantee for the service life of the coating starts at 10 years and develops from 15 years to over 20 years. Research institutions in the United States have conducted tests and comparisons on fluorocarbon coatings, super coatings, and general coatings. Samples coated with fluorocarbon coatings were placed in hot sunlight in Florida, USA, and exposed to harsh environments with humid and saline air for 12 years. It has been proven that the stability and durability of fluorocarbon coatings are 10 and 20 percentage points higher than the other two coatings. Fluorocarbon coatings ensure their use in various harsh environments.



F 纳米防腐隔热板

NANO ANTI-CORROSION INSULATION BOARD

纳米防腐隔热板，它是一种复合金属板，包括基板、高分子转化层、光谱选择性反射隔热层、纳米材料层（耐碱、耐酸碱保护层）；由于它耐腐蚀性好、耐酸碱、防腐蚀、隔热、降噪，防火最大程度发挥不同组元材料的力学、化学、物理等综合性能，在现代建筑中得到广泛应用。具体优点如下：

- ①任意造型：可为建筑提供无限创意空间，建造美国独特的建筑，创造完美的视觉效果。
- ②安全可靠：所有部件均采用焊接连接，可避免安全隐患。
- ③重量轻便：对结构的承载要求降低，施工难度小。
- ④易安装：安装方便，缩短施工周期，节约工程造价。
- ⑤隔热效果好：超高的热反射率使产品表面不吸热，即使在夏天板面也不烫手，使建筑有内温降4-8度。
- ⑥耐酸碱、耐腐蚀性强：为高污染企业节约大量的人力、物力成本。
- ⑦自洁性强：具有防静电功能，表面灰尘经雨水清洗。
- ⑧环保性强：表面凹凸快使产品无光污染并降低噪音。
- ⑨消防性好：阻燃、绝燃，具有阻燃性。
- ⑩耐候性强：在零下-20℃到100℃的范围内均适用。

Nano anti-corrosion insulation board, which is a composite metal board, including substrate, polymer conversion layer, spectral selective reflection heat insulation layer, nano material layer (weathering, acid and alkali protective layer); due to its good weather resistance and resistance Acid, alkali, anti-corrosion, heat insulation, noise reduction, and fire prevention maximize the comprehensive performance of mechanics, chemistry, and physics of different component materials, and are widely used in modern buildings. The specific advantages are as follows:

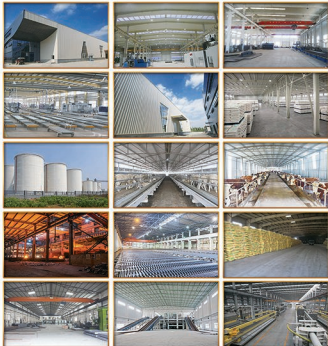
- 1.Any shape: It can provide architects with unlimited creative space, build beautiful and unique architecture, and create perfect visual effects.
- 2.Safe and reliable: all parts are made of steel and can resist strong typhoon attacks.
- 3.Light weight: The load-bearing requirements for the steel structure are reduced, and the construction difficulty is small.
- 4.Easy to install: easy to install, shorten construction period and save engineering cost.
- 5.Insulation effect is good: the ultra high heat reflectivity makes the surface of the product not absorb heat, even if it is not hot in the summer, the temperature inside the building is lowered by 4-8 degrees.
- 6.Acid and alkali resistance, strong corrosion resistance: save a lot of manpower and material costs for high-pollution enterprises.
- 7.High self-cleaning: anti-static function, smooth surface without frequent cleaning.
- 8.Environmentally friendly: Surface embossing makes the product no light pollution and reduces noise.
- 9.Fire performance is good: Flame igniting, insulated, flame retardant.
- 10.weather resistance: applicable in the range of minus -20 °C to 100 °C.

物料清单表 Schematic



F 纳米防腐隔热板

NANO ANTI-CORROSION INSULATION BOARD



G 镀 (铝) 锌板

PLATED (ALUMINUM) ZINC PLATE



Technical Standard标准	JIS 3302 / GB 2518 / EN10143
Grade材质	DXS1D+Z.SGCC
Types 种类	Commercial / Drawing / Deep Drawing / Structural quality
Width 宽度	30-1250mm
Thickness 厚度	0.10-1.20mm
Zinc coating涂铝厚度	240-300g/m ²
Surface treatment表面处理	chromed / skinpass / oiled / parkerizing / dry / anti-fingerprint
Surface structure锌花	zero spangle / mini spangle / regular spangle / big spangle
ID 线圈内径	508mm or 610mm

G 镀 (铝) 锌板

PLATED (ALUMINUM) ZINC PLATE

我公司生产的镀锌板是冷轧板表面镀锌一层以锌为主要原料的钢板，被广泛运用于建材装饰(复合板、玻璃瓦、卷帘门)、日常生活用品(洗衣机、电冰箱、烤箱)及装饰领域。

公司设备先进精良，技术力量雄厚，可生产0.10-1.20*700-1250 xC各种规格的镀锌钢板，其中生产0.30-0.15*1000xC的超薄大跨镀锌钢板处于国际先进水平，填补了国内空白，具有不可比拟的优势。

热浸镀锌生产工艺流程：

原料(冷轧钢卷)→开卷→剪切头尾→焊接→酸洗→水洗→电镀锌→水洗→热风干燥→入口涂油→还原退火→热浸镀锌→锌层控制(气刀)→冷却→光整→拉伸弯曲矫直→钝化→烘干→出口涂油→卸卷→切卷称重→包装→入库

The galvanized sheet produced by our company is coated with a layer of zinc as the main raw material on the surface of the cold-rolled sheet. It is widely used in building materials decoration (composite panels, glass tiles, rolling doors), daily necessities (washing machines, refrigerators, ovens), and packaging containers, etc.

The company has excellent equipment configuration and strong technical force. It can produce galvanized steel sheets of various specifications ranging from 0.30 to 1.20*700-1250 xC. The ultra-thin large zinc galvanized sheets produced by 0.30-0.15*1000xC are at the international advanced level. The domestic gap has an incomparable advantage.

Hot dip galvanizing production process:

Raw materials (cold rolled steel coil) → uncoiling → shearing head and tail → welding → pickling → pickling → electrolytic plating → water scrubbing → hot air drying → inlet coating → reduction annealing → hot dip galvanizing → zinc layer control (air knife) → cooling → finishing → stretching and bending straightening → passivation → drying → export looper → unloading → steel weighing → packaging → stock

产品规格 PRODUCT SPECIFICATIONS

项目 Project		公称尺寸 Nominal dimension/mm
公称厚度 Nominal thickness		0.15-1.2
公称厚度 Nominal thickness	钢板及钢带 Steel plate and steel belt	1000-1250
	纵切钢带 Longitudinal cutting steel belt	<600
公称长度 Nominal length	钢板 Steel plate	1000-8000
公称长度 Nominal length	钢带及纵切钢带 Steel belt and longitudinal cutting steel belt	610或508

镀层表面结构分类 CATEGORY OF STRUCTURES OF CLAD LAYER

分类项目 Classification item	类别 Category	代号 Code
镀层种类 Types of clad layer	纯锌镀层 Zinc clad layer	Z
	特镀合金镀层 Zinc-nickel alloy S-clad layer	ZF
镀层形式 ¹⁾ Patterns of clad layer	等厚镀层 Clad layer with uniform thickness Alg / m ² / Bg / m ² (A/B)	A / B
	差厚镀层 Clad layer with different thickness Alg / m ² / Bg / m ² (A/B)	

A为前侧的外表面镀量或钢板上的表面镀层重量(g / m²)；B为后侧的内表面镀层重量或钢板上的表面镀层重量(g / m²)提供双方协商，等厚镀层代号可以用镀层重量之和表示。

H 瓦楞板

CORRUGATED ROOFING STEEL SHEETS

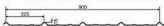


H 瓦楞板

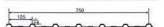
CORRUGATED ROOFING STEEL SHEETS



瓦楞板型号TYPE	15-225-900	瓦型
有效覆盖宽度EFFECT WIDTH	800	APPLICATION
展开宽度UNFOLDING WIDTH	1000	
板厚THICKNESS	0.4 0.5 0.6	镀锌板
截面惯性矩SECTION INERTIA	4.5 5.6 7.02	瓦型
截面抵抗矩SECTION RESISTANCE	2.07 2.38 3.45	



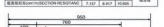
瓦楞板型号TYPE	15-225-900A	瓦型
有效覆盖宽度EFFECT WIDTH	800	APPLICATION
展开宽度UNFOLDING WIDTH	1000	
板厚THICKNESS	0.4 0.5 0.6	镀锌板
截面惯性矩SECTION INERTIA	5.3 6.6 8.09	瓦型
截面抵抗矩SECTION RESISTANCE	2.67 3.16 4.31	



瓦楞板型号TYPE	15-125-750	瓦型
有效覆盖宽度EFFECT WIDTH	700	APPLICATION
展开宽度UNFOLDING WIDTH	1000	
板厚THICKNESS	0.4-1.0	镀锌板



瓦楞板型号TYPE	38-125-800	瓦型
有效覆盖宽度EFFECT WIDTH	600	APPLICATION
展开宽度UNFOLDING WIDTH	1200	
板厚THICKNESS	0.4 0.5 0.6	镀锌板
截面惯性矩SECTION INERTIA	10.759 12.45 15.74	瓦型
截面抵抗矩SECTION RESISTANCE	3.157 3.607 5.058	



瓦楞板型号TYPE	38-150-900	瓦型
有效覆盖宽度EFFECT WIDTH	700	APPLICATION
展开宽度UNFOLDING WIDTH	1000	
板厚THICKNESS	0.5 0.6 0.8	镀锌板
截面惯性矩SECTION INERTIA	11.38 13.66 18.56	瓦型
截面抵抗矩SECTION RESISTANCE	6.12 7.18 9.90	



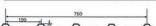
瓦楞板型号TYPE	38-150-900	瓦型
有效覆盖宽度EFFECT WIDTH	800	APPLICATION
展开宽度UNFOLDING WIDTH	1200	
板厚THICKNESS	0.5 0.6 0.8	镀锌板
截面惯性矩SECTION INERTIA	10.74 12.98 18.09	瓦型
截面抵抗矩SECTION RESISTANCE	5.14 6.15 7.96	



瓦楞板型号TYPE	27-165-740	瓦型
有效覆盖宽度EFFECT WIDTH	740	APPLICATION
展开宽度UNFOLDING WIDTH	974	
板厚THICKNESS	0.3 0.4 0.6	镀锌板
截面惯性矩SECTION INERTIA	8.81 10.76 14.92	瓦型
截面抵抗矩SECTION RESISTANCE	3.63 4.50 7.06	



瓦楞板型号TYPE	24-225-1025	瓦型
有效覆盖宽度EFFECT WIDTH	825	APPLICATION
展开宽度UNFOLDING WIDTH	1080	
板厚THICKNESS	0.5 0.6 0.8	镀锌板
截面惯性矩SECTION INERTIA	9.19 10.75 14.92	瓦型
截面抵抗矩SECTION RESISTANCE	4.04 4.82 7.47	



瓦楞板型号TYPE	33-130-700	瓦型
有效覆盖宽度EFFECT WIDTH	700	APPLICATION
展开宽度UNFOLDING WIDTH	914	
板厚THICKNESS	0.5 0.6 0.8	镀锌板
截面惯性矩SECTION INERTIA	7.78 10.75 15.04	瓦型
截面抵抗矩SECTION RESISTANCE	3.09 4.63 7.45	

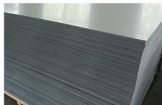


瓦楞板型号TYPE	38-187.5-750	瓦型
有效覆盖宽度EFFECT WIDTH	750	APPLICATION
展开宽度UNFOLDING WIDTH	1000	
板厚THICKNESS	0.5 0.6 0.8	镀锌板
截面惯性矩SECTION INERTIA	11.48 13.66 18.63	瓦型
截面抵抗矩SECTION RESISTANCE	6.21 7.47 9.93	

I 分条 SLITTING



I 分条 SLITTING



J 质量控制

QUALITY CONTROL


 铅笔硬度试验
 Pencil hardness test

 划痕试验
 Scratch resistance test

 光泽度仪
 Gloss meter

 涂层厚度测定
 Coating thickness measurement

 氨氮测定仪
 Ammonia nitrogen analyzer

 划格试验
 Cross-cut test

 耐溶剂试验
 Solvent resistance test

 耐湿性试验
 Moisture resistance test

 反向冲击
 Reverse shock

 可见分光光度计
 Visible spectrophotometer

K 外贸

FOREIGN TRADE

BOXING HAOJIA STEEL CO., LTD has been Founded in 2018, The mainly products we offer is steel Coil and sheet including All kinds of Preapainted Steel coil/Galvanized Steel Coil/Galvalume Steel Coil/ Steel Strip.Galvanized Steel Sheet/ Corrugated Steel Sheet.

As become the professional steel and metal export and distributor in international business field, With its well-de.served reputation and efficient service, We steel export amount more than 10milions usd last year and we already achieved more than hundreds customers from 30 countries longtime business relationship, We steel business marketcover Europe, South America, Middle Asia, East Asia, South East Asia, Africa, countries and regions. We stil expand it byour continuously qualified product and service.

What we goodwill is continuously seeks qualified professional suppliers to provide its customers with newer and-better products based on a trustworthy and mutually beneficial relationship. Taking advantage of a long-term supply agreement with the Chinese steel manufacturers, it is in a position to ensure a regular and stable supply to worldwide customers with excellent service and best-fit products.

Welcome to contact us for creating and sharing the new value.

