




Produce Your Electronics in Europe


BUSINESS BROCHURE


Get In Touch

EEProto is a customer oriented Electronic Manufacturing Service provider and more ...



 + 40 749 335 906

 WWW.EEPROTO.EU
WWW.SYMPHELECTRONICS.RO
office@symphelectronics.ro

 Str. Cornelia Salceanu, Nr. 28
Loc. Timisoara, Jud. Timis, Romania
ZIP: 300561

**LAUNCH YOUR PROJECT
SIMPLE AS**

1 2 3



Welcome

PCB Assembly Capabilities

Types of Assembly:

- SMT (Surface Mount Technology)
- THT (Through Hole Technology)
- SMT and THT mixed

Component Package:

- Reels
- Cut tape
- Tube and Tray
- Bulk parts

Assembly Process:

- Leaded (RoHS)
- SMT automatic
- THT manual

Components:

- Surface Mount Devices (SMD):
 - Min. 0201 imperial code
 - BGA, QFN, (max. 55x75mm)
 - Max component height 15mm
- Through Hole Devices (THD):
 - no limitation

Board Dimensions and Shape:

- Min. 40x50mm, max. 460x400mm incl. panel boarder
- One-sided or double-sided assembly

Quality:

- Guided by IPC and NASA standards
- Automatic Optical Inspection, functional tests based on customer specifications
- 2D barcode label for traceability
- Assembly takes place in an EPA (Electrostatic Protected Area)



WE ARE
ISO 9001:2015,
ISO 14001:2015
CERTIFIED

About Us

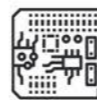
Established in 2013, we embarked on a journey after nearly a decade of honing our skills in maintenance and engineering services within the entertainment industry. Today, our ambition knows no bounds as we strive to channel all our knowledge into cutting-edge products and services. Our subsidiary brand, EE Proto, is dedicated to collaborating with companies across various industries, offering comprehensive solutions from prototype to mid-scale series production. Regardless of the industry, we proudly serve customers ranging from consumer electronics to automotive and medical electronics. Explore our wide range of services and discover how EE Proto can help bring your innovative ideas to life. With our expertise and commitment to excellence, we're here to support your journey every step of the way.

Our Services



PCB Assembly

Whether you're seeking a prototype or mid-scale production, we offer seamless assembly services tailored to your project requirements. Our production can handle SMD, through-hole devices, and odd-form components. To streamline the process, we can manage the entire workflow, including bare PCB orders from our trusted partners, component procurement, device programming, and shipping.



PCB DESIGN

Do you have an idea for your electronic product? Book a meeting with one of our experts today! Our CAD services include schematic design and capture, as well as PCB layout design. Our experts will select the best technology and components suited to your project and budget. If required, we also handle PCB stackup, impedance control, signal integrity simulation, 3D modeling of the board, and more.



Final Assembly

Optimize efficiency in your small-series production with our streamlined approach, covering everything from assembly to shipping. Beyond PCB Assembly, we provide full-service solutions including final product assembly (board into enclosure), comprehensive testing, packaging, and shipping.

KEY ADVANTAGES

Flexibility

At our company, customer satisfaction is our top priority. By leveraging state-of-the-art technology and maintaining an open-minded approach, we are dedicated to swiftly adapting to your needs while upholding the highest standards of service.

Vapor Phase Soldering

Alongside our conventional reflow technology, we have invested in vapor phase soldering, which is preferred for mission-critical applications such as military and aerospace, to ensure the highest quality of soldering

Key advantages of vapor phase soldering include:

- Superior heat transfer:** Ensures consistent and reliable soldering even for boards with high complexity and mass.
- Reduced risk of overheating:** Maximum temperature of 230°C.
- Even temperature distribution:** Guarantees uniform heat across the entire board.
- 100% Inert medium:** Prevents oxidation during the soldering process.

Premium materials

We understand that reliability is crucial not only for customer satisfaction but also for the well-being of our environment. Therefore, we carefully select the most reliable and eco-friendly materials for our processes.

Quality and data security

We are committed to meeting our customers' quality requirements to the highest standard. Our team is well-trained and adheres to IPC-A-610 Acceptability of Electronic Assemblies criteria and NASA standards, even in the absence of special requirements. To ensure traceability, we use ESD datamatrix labels for our assemblies. We prioritize data security through stringent access control, hardware firewalls, meticulous data flow management, and careful supplier selection.