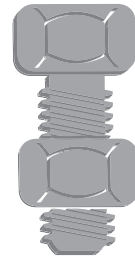


Husaini
Brothers



Fasteners specialist since 1968

PRODUCT CATALOGUE



Celebrating 52 Years of Excellence

Husaini Brothers



Fasteners specialist since 1968

Husaini & Brothers L.L.C

P.O.Box: 3990

28, 11 B, Street,

Al Quoz Ind. Area 1

Dubai - U.A.E

Tel.: +971 4 2274781

Website: www.husainibrothers.com

Email: sales@husainibrothers.com



ISO 9001: 2015 CERTIFIED COMPANY



WELCOME TO HUSAINI BROTHERS

Established in 1968, **Husaini Brothers** started as a trading business dealing in a range of building material items such as nails, machine screws and self-tapping screws. As the UAE and other GCC countries developed, **Husaini Brothers** progressed and diversified into specialized engineering and marine quality fasteners pertaining to various sectors such as the construction and steel structure industry, oil and petro-chemical industry, the automotive sector, shipbuilding, electrical and switch gear and the furniture industry.

It's legacy of over 50 years has allowed **Husaini Brothers** to become one of the leading stockist and trader of engineering fasteners in the Gulf region dealing in a variety of more than 2000 SKU's coming from reputed manufacturers located in USA, Europe and the Far east Asia.

At **Husaini Brothers**, quality and durability are of paramount importance when supplying to all industries. This is because even one low quality fastener can result in major losses and site delays proving to be very costly and time consuming. Moreover, we also believe in serving our customers with utmost urgency. In today's competitive world, we understand that our purchasers have limited time to submit tenders and we do our best to provide them with instant quotes for their fastener requirements.

At **Husaini Brothers**, we believe in supplying fasteners which are
"MADE TO LAST".

Website: www.husainibrothers.com

OUR BRANDS



ASTM A325 Bolts (Black & HDG), ASTM A490 Bolts, DIN 6914 Bolts (Black & HDG), 8.8 Hot Dip Galvanized/Black Bolts, F436 Washer, A56310S Nut, Threaded bars etc.



DIN 6914 Bolts (Black & HDG), DIN 6915 Nuts, DIN 6916 Washers, DIN 6917 Taper Washers (5 degrees), DIN 6918 Taper Washers (8 degrees).



Squirter® DTI' Washer



THE WORLD LEADER

Grade 12.9 Allen Bolts (Socket Screw Bolt), Grade 10.9 Bolts, Grade 8.8 Bolts etc.



Sundram Fasteners Limited

Grade 12.9 Allen Bolts (Socket Screw Bolt), Grade 10.9 Bolts, Grade 8.8 Bolts etc.



Grade 304 | 316 Hex Bolts, Nut, Washer in Metric & Inch Size

OUR PRODUCTS

BOLTS



**DIN 912
Allen Bolt**

Grades: 10.9 | 12.9 | 316 | 304
Material: MS | GI | SS | Yellow
Thread Types: Metric | UNC | UNF



**DIN 7991
Allen CSK Bolt**

Grades: 10.9 | 12.9 | 316 | 304
Material: MS | GI | SS | Yellow
Thread Types: Metric | UNC | UNF



**DIN 7380
Button Head Allen Bolt**

Grades: 10.9 | 12.9 | 316 | 304
Material: MS | GI | SS | Yellow
Thread Types: Metric | UNC



**DIN 7984
Low Head Allen Bolt**

Grades: 8.8 | 316 | 304
Material: MS | GI | SS
Thread Types: Metric



Finneck Bolt

Grades: 8.8
Material: HDG
Thread Types: Metric



**DIN 6921
Flange Bolt**

Grades: 8.8 | 10.9 | 316 | 304
Material: MS | GI | SS | Yellow | DAC
Thread Types: Metric | UNC



**DIN 933 / 931
Hexagon Bolt**

Grades: 8.8 | 10.9 | 316 | 304
Material: MS | GI | SS | HDG | Yellow | Brass
Thread Types: Metric | M. fine | UNC | UNF



Heavy Hexagon Bolt

Grades: ASTM A325M
Material: MS | HDG
Thread Types: Metric | UNC



Heavy Hexagon Bolt

Grades: ASTM A490M
Material: MS
Thread Types: Metric



**Heavy Hexagon Bolt
(Friction Grip)**

Grades: ASTM 6914 (10.9)
Material: MS | HDG
Thread Types: Metric



**DIN 975/976-1
Threaded Rods**

Grades: 4.6 | 8.8 | 10.9 | 316 | 304 | B7
Material: MS | GI | HDG | SS | Brass | Nylon
Thread Types: Metric | UNC | UNF



**DIN 603
Carriage Bolt**

Grades: 8.8 | 316 | 304
Material: MS | GI | SS | HDG
Thread Types: Metric | UNC



Roofing Bolt

Grades: 316 | 304
Material: MS | GI | SS | HDG
Thread Types: Metric | UNC | UNF



**DIN 571
Coach Screw**

Grades: 316 | 304
Material: GI | SS
Thread Types: Metric | UNC



**DIN 444
Dog Bolt**

Grades: 316 | 304
Material: MS | GI | SS
Thread Types: Metric



**Dowel Screw
Coach & Stud**

Thread Types: Metric
Material: GI



**Wire Bolt With
Nut & Washer**

Grades : 316
Material: SS
Thread Types: Metric



**Eye Bolt With
Washer & Nut**

Grades : 316 | 304
Material: SS
Thread Types: Metric



**DIN 186B
T Bolt**

Grades: 4.6
Material: MS | GI
Thread Types: Metric



Track Shoe Bolt

Grades: 10.9
Material: MS
Thread Types: Metric | UNF



**DIN 939
1.25D Engineering Stud**

Grades: 8.8 | 316 | 304
Material: MS | GI | SS
Thread Types: Metric | UNC



**DIN 938
1D Engineering Stud**

Grades: 8.8 | 316 | 304
Material: MS | GI | SS
Thread Types: Metric | UNC



**DIN 835
2D Engineering Stud**

Grades: 8.8 | 316 | 304
Material: MS | GI | SS
Thread Types: Metric | UNC



Solar Fastener

Grades: 316 | 304
Material: SS
Thread Types: Metric



Certificate Of Registration

Awarded to

HUSAINI & BROTHERS LLC

at

P.O. BOX NO: 3990, GROUND FLOOR, SHOP NO: 1, AL SAFEER PLAZA, NAKHEEL ROAD, DEIRA,
DUBAI, UAE

Quality Registrar Systems certify that the management system of the above
organization has been audited and found to be in compliance with the QRS
requirements for registration of the management system standard detailed
below:

ISO 9001:2015

Quality Management Systems

Scope of work

TRADING OF ENGINEERING AND MARINE FASTENERS

Certificate No: DQU-11555

Originally Registered: 15 JAN 2018

Latest Issue: 15 JAN 2018

Valid up-to: 14 JAN 2021

Quality Registrar Systems



MANAGING OFFICE ADDRESS:
Quality Registrar Systems
P.O. Box: 20826
United Arab Emirates



Tel: +971-2-6714302
Fax: +971-2-6741449
www.qrsyst.com

WORLD WIDE CERTIFICATION



NUTS



Heavy Hexagon Nut

Grades: ASTM A194M
ASTM A563S | DIN 6915
Material: MS | HDG
Thread Types: Metric | UNC



2H Nut

Grades: 2H
Material: MS | HDG | GI
Thread Types: Metric | UNC



DIN 929 Hexagon Weld Nut

Grades: 8.8 | 316 | 304
Material: MS | GI | SS
Thread Types: Metric



DIN 6331 Hex Nut With Collar

Grades: 8.8 | 10.9 | 316 | 304
Material: MS | GI | SS | HDG | Yellow | Brass
Thread Types: Metric | M. fine | UNC | UNF



DIN 934 Hexagon Nut

Grades: 8.8 | 10.9 | 316 | 304 | Gr.5 | Gr.8
Material: MS | HDG | GI | SS | Yellow
Thread Types: Metric | UNC | UNF | BSW | BSF



DIN 985/982 Self Locking Nut

Grades: 8.8 | 10.9 | SS 316 | SS 304
Material: MS | GI | SS | Yellow
Thread Types: Metric | UNC | UNF | BSW



DIN 980 Full Steel Lock Nut

Grades: 8.8 | 10.9 etc.
Material: GI
Thread Types: Metric



DIN 6926 Self Locking Hexagon Flange Nut With Serration

Grades: 8.8 | 10.9 | 316 | 304
Material: MS | GI | SS | Yellow
Thread Types: Metric | UNC



DIN 1587 Cap Dome Nut

Grades: 8.8 | 316 | 304
Material: GI | SS | Nickel
Thread Types: Metric | UNC



DIN 986 Self Locking Hexagon Domed Cap Nut

Grades: 8.8 | 316 | 304
Material: GI | SS | Nickel
Thread Types: Metric | UNC



DIN 917 Hexagon Cap Nut

Grades: 8.8 | 316 | 304
Material: GI | SS | Nickel
Thread Types: Metric | UNC



DIN 6334 Hexagon Coupling / Long Nut

Grades: 8.8 | 316 | 304
Material: GI | SS | YELLOW
Thread Types: Metric | UNC | BSW



LN - Round Coupling

Grades: 8.8 etc.
Material: GI
Thread Types: Metric



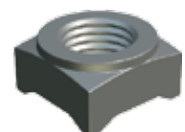
DIN 557 Square Nut

Grades: 8.8 | 316 | 304
Material: GI | SS
Thread Types: Metric



DIN 562 Square Thin Nut

Grades: 8.8 | 316 | 304
Material: GI | SS
Thread Types: Metric



DIN 928 Square Weld Nut

Grades: 8.8 etc.
Material: MS
Thread Types: Metric



DIN 936
Hexagon
Thin Nut, Medium

Grades: 8.8 | 316 | 304
Material: GI | SS
Thread Types: Metric | UNC



DIN 439
Hexagon Very Thin Nut

Grades: 8.8 | 316 | 304
Material: GI | SS
Thread Types: Metric | UNC



Cage Nut

Grades: 8.8 | 316 | 304
Material: MS | GI | SS | Yellow
Thread Types: Metric



NUT – Cylindrical
Cage Nut

Grades: 316 | 304
Thread Types: Metric



DIN 935
Castle Nut

Grades: 8.8 | 316 | 304
Material: MS | GI | SS | Yellow
Thread Types: Metric | UNC



DIN 937
Castle Nut

Grades: 8.8 | 316 | 304
Material: MS | GI | SS | Yellow
Thread Types: Metric | UNC



DIN 979
Castle Nut

Grades: 8.8 | 316 | 304
Material: MS | GI | SS | Yellow
Thread Types: Metric | UNC



DIN 315
Wing Nut

Grades: 316 | 304
Material: MS | GI | SS
Thread Types: Metric | UNC



NUT – Speed Nut

Grades: 4.6
Material: GI | Yellow
Thread Types: Metric



NUT – Teeth nut

Grade: 316 | 304
Material: MS | GI | SS
Thread Types: Metric



NUT – left thread nut

Grades: 8.8
Material: MS | HDG | GI
Thread Types: Metric



DIN 6923
Flange Nut Serrated

Grades: 8.8 | 10.9 | 316 | 304
Material: MS | GI | SS | Yellow
Thread Types: Metric | UNC



Nut – Rivet Nut
With Collar

Grades: 316 | 304
Material: GI | Yellow | SS
Thread Types: Metric



Nut – Rivet Nut
Without Collar

Grades: 316 | 304
Material: GI | Yellow | SS
Thread Types: Metric



DIN 7965
Slotted
Nut With Inserts

Grades: Normal
Material: GI | MS
Thread Types: Metric



DIN 7967
Pal Self
Locking Counter Nut

Grades : 316 | 304
Material: GI | SS
Thread Types: Metric



DIN 431
Pipe Nut

Grades: 316 | 304
Material: SS
Thread Types: BSP (British Standard Pipe)



X Rail Nut

Grades: 316 | 304
Material: GI | Yellow | SS
Thread Types: Metric



DIN 466
Knurled
Thumb Nuts

Grades: 316 | 304
Material : SS
Thread Types: Metric



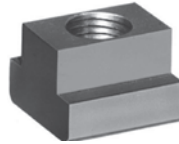
Nuts – Groove Nuts

Grades: 316 | 304
Material : SS
Thread Types: Metric



**DIN 546
Slotted
Round Nut**

Grades: 316 | 304
Material : SS
Thread Types: Metric



**DIN 508
T Slot Nut**

Grades: 8.8
Material: MS
Thread Types: Metric



**Nut - Slotted
Cross Dowel Type Q**

Grades: 4.6
Material: GI
Thread Types: Metric



**Nut - Hexagon Socket
Flat Head Cap Nut
Connector Nut**

Grades: Normal
Material: Nickel
Thread Types: Metric



**DIN 80701
Toggle Nut**

Grades: Normal
Material: Brass
Thread Types: Metric



**DIN 467
Knurled Thumb Nuts
Thin Type**

Grades: 316 | 304
Material : SS
Thread Types: Metric



**Nut - Insert Press
Nuts Hexagon**

Grades: 8.8 | 304
Material: GI | SS
Thread Types: Metric



Nut - Hammer Nut

Grades: 316 | 304
Material : SS
Thread Types: Metric



Shear Nut

Grades: 316 | 304
Material: MS | SS
Thread Types: Metric



**Nut - Comby Nut
With Conical
Washer**

Grades: 8.8
Material:GI
Thread Types: Metric



Nut - Weld On Nut

Grades: Normal
Material: MS
Thread Types: Metric



Bow Nut

Grades : 316 | 304
Material: SS
Thread Types: Metric



WASHERS



**DIN 125
Washer Type A**

Grades: 316 | 304
Material: MS | GI | SS | HDG | Yellow etc.
Size Measurements In: Metric | INCH



**DIN 9021
OD - 3 X
Thread Diameter**

Grades: 316 | 304
Material: GI | SS | etc.
Size Measurements In: Metric



**DIN 6796
Conical
Spring Washer**

Grades: 316 | 304
Material: GI | SS | HDG | Yellow etc.
Size Measurements In: Metric



**NF E 25 511 Afnor
Serrated Conical
Contact Washers**

Grades : 316 | 304
Material: GI | SS | HDG | Yellow
Size Measurements In: Metric



**NF E 25 514 Afnor
Washers Type**

Grades : 316 | 304
Material: GI | SS | HDG | Yellow
Size Measurements In: Metric



**DIN 137
Wave Spring
Washer**

Grades: 304
Material: SS | Yellow
Thread Types: Metric



**DIN 2093
Disc Spring Washer**

Size Measurements In: Metric
Material: MS



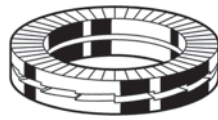
Safety Washers

Grades: 316 | 304
Material: GI | SS | MS
Size Measurements In: Metric



Schnorr Washers

Grades: 316 | 304
Material: GI | SS | MS
Size Measurements In: Metric



Nord Lock Washers

Size Measurements In: Metric
Material: HDG | Yellow | SS



**DIN 6798
A Serrated
Lock Washers**

Grades: 316 | 304
Material: GI | SS | MS
Size Measurements In: Metric



**DIN 6798
J Serrated Lock Washer
Internal Teeth**

Grades: 304
Material: GI | SS | MS
Size Measurements In: Metric



**DIN 6798
V Serrated Lock Washer
External Teeth**

Size Measurements In: Metric
Material: MS



**DIN 6797
J Internal
Toothed Lock Washer**

Grades: 304
Material: GI | SS
Size Measurements In: Metric



**DIN 6797
A External
Toothed Lock Washer**

Grades: 304
Material: GI | SS
Size Measurements In: Metric



**Double Toothed
Lock Washer**

Grades: 304
Material: GI | SS
Size Measurements In: Metric



**DIN 127
Spring
Washers**

Grades: 316 | 304
Material: GI | MS | SS | Yellow | HDG
Size Measurements In: Metric | INCH



**DIN 93
1 Tab**

Grades: 316 | 304
Material: MS | SS
Size Measurements In: Metric



**DIN 463
2 Tabs**

Grades: 316 | 304
Material: MS | SS
Size Measurements In: Metric



**DIN 432
Washers
With External Tab**

Grades: 304
Material: MS | SS
Size Measurements In: Metric



**DIN 436
Square Washer**

Grades: 316 | 304
Material: MS | SS | GI
Size Measurements In: Metric



**DIN 435 / 6918
Square Taper Washer**

Grades: 316 | 304
Material: MS | SS | GI | HDG
Size Measurements In: Metric



**DIN 434 / 6917
Square Taper Washer**

Grades: 316 | 304
Material: MS | SS | GI | HDG
Size Measurements In: Metric



**DIN 125
Plain
Nylon Washer**

Grades: Nylon (Teflon)
Size Measurements In: Metric



**DIN 9021
Nylon Falt Washer**

Grades: Nylon (Teflon)
Size Measurements In: Metric



**NF E 27-619
Turned Cup Washers**

Grades: 316 | 304
Material: SS
Size Measurements In: Metric



**NF E 27-619
Stamped Cup Washers**

Grades: 316 | 304
Material: SS
Size Measurements In: Metric



**Epdm Bonded
Sealing Washers
Neoprene**

Grades: 304
Material: GI | SS
Size Measurements In: Metric



Sealing Washer

Grades : 316 | 304
Material: SS
Size Measurements In: Metric



Starlock Washer

Grades: 304 etc.
Size Measurements In: Metric
Material: MS | SS



**Washer - Aet Sd
Washer Din 912 Bolts**

Grades: 316 | 304
Size Measurements In: Metric
Material: GI | SS | MS



**DIN 988
Shim Rings**

Size Measurements In: Metric
Material: MS



**Contact Teeth
Washer**

Size Measurements In: Metric
Material: GI | YELLOW | HDG



**DIN 7349
Pack Washers**

Grades: 316 | 304
Size Measurements In: Metric
Material: GI | SS | HDG



**DIN 7989
Falt Washer**

Size Measurements In: Metric
Material: HDG



DTI Washer

Grades: 8.8 | 10.9
Size Measurements In: Metric
Material: Mech. Galvanized | Black

SCREWS



DIN 7504 K
Hexagon Self
Drilling Screws

Grade: 316 | 304
Material: GI | SS
Thread Types: Metric



DIN 7504 P
Counter Sunk Self
Drilling Scr

Grade: 316 | 304
Material: GI | SS | MS
Thread Types: Metric



DIN 7504 N
Pan Head
Self Drilling Screw

Grade: 316 | 304
Material: GI | SS | MS
Thread Types: Metric



DIN 7976 C
Hexagon
Self Tapping Screw

Grade: 316 | 304
Material: GI | SS
Thread Types: Metric



DIN 6928
Hexagonal Washer Head
Self Tapping Screw

Grade: 316 | 304
Material: GI | SS
Thread Types: Metric



DIN 7982
Countersunk
Self Tapping Screw

Grade: 316 | 304
Material: GI | SS
Thread Types: Metric



DIN 7983
Oval Head
Self Tapping Screw

Grade: 316 | 304
Material: GI | SS
Thread Types: Metric



DIN 7981
Pan Head
Self Tapping Screw

Grade: 316 | 304
Material: GI | SS
Thread Types: Metric



DIN 965
Counter
Sunk Machine Screw

Grade: 316 | 304
Material: GI | SS
Thread Types: Metric



DIN 966
Oval Head
Machine Screw

Grade: 316 | 304
Material: GI | SS
Thread Types: Metric



DIN 7985
Pan Head
Machine Screw

Grade: 316 | 304
Material: GI | SS
Thread Types: Metric



DIN 84
Cheesehead
Machine Screw

Grade: 316 | 304
Material: GI | SS
Thread Types: Metric



DIN 86
Roundhead
Machine Screw

Grade: 316 | 304
Material: GI | SS
Thread Types: Metric



DIN 916
Grub Screw

Grades: 316 | 304
Material: GI | MS | SS
Thread Types: Metric | UNC | UNF | BSF



DIN 914
Cone Point Grub Screw

Grades: 316 | 304
Material: GI | MS | SS
Thread Types: Metric | UNC | UNF



Dog Point
Grub Screw

Grades: 316 | 304
Material: GI | MS | SS
Thread Types: Metric | UNC | UNF



**DIN 7997
Countersunk
Wood Screw**

Grades: 316 | 304
Material: GI | SS
Thread Types: Metric



**DIN 97
Countersunk
Wood Screw, Slotted**

Grades: 316 | 304
Material: GI | SS
Thread Types: Metric



**Torx Screw,
Countersunk Head**

Grades: 316 | 304
Material: GI | SS
Thread Types: Metric



Torx Screw, Pan Head

Grades: 316 | 304
Material: GI | SS
Thread Types: Metric



**Torx Screw,
Button Head**

Grade: 304
Material: SS
Thread Types: Metric



**DIN 7500 M
Taptite Screw
Countersunk Head**

Grades: 304
Material: GI | SS
Thread Types: Metric



**DIN 7500 C
Taptite Screw
Pan/cheese Head**

Grades: 304
Material: GI | SS
Thread Types: Metric



**DIN 7500 M
Torx Taptite Screw
Countersunk Head**

Grades: 304
Material: GI | SS
Thread Types: Metric



Socket Head Taptite

Grades: 304
Material: GI | SS
Thread Types: Metric



**Screw – Hammer
Drive Screw, U Type**

Material: Nickel
Thread Types: Metric



**Screw – Hex Slotted
Self Tapping Screw**

Grades: 316 | 304
Material: GI | SS
Thread Types: Metric



Chipboard Screws

Grades: 316 | 304
Material: MS | GI | SS
Thread Types: Metric



**DIN 18182-2
Drywall Screws**



Security Screws

HEAVY LOAD ATTACHMENTS



Anchor Bolt

Grades : 316 | 304
Material: GI | Yellow | SS
Thread Types: Metric



Rawl Bolt

Grades : 316 | 304
Material: GI | Yellow | SS
Thread Types: Metric



Sheer Stud

Material: MS
Thread Types: Metric



**L Shaped
Anchor Bolt**

Grades: 4.6 | 8.8
Material: GI | HDG
Thread Types: Metric

HOOK & EYE PRODUCTS



**J Shaped
Anchor Bolt**

Grades: 4.6 | 8.8
Material: GI | HDG
Thread Types: Metric



**Chemical
Anchor Bolt**

Grades: 316 | 304
Material: Yellow | SS
Thread Types: Metric



D Shackle

Grades : 316 | 304
Material: GI | SS
Thread Types: Metric



**Twisted Dee
Chain Shackle**

Grades : 316 | 304
Material: GI | SS
Thread Types: Metric



Long D Shackle

Grades : 316 | 304
Material: GI | SS
Thread Types: Metric



Wide D Shackle

Grades : 316 | 304
Material: GI | SS
Thread Types: Metric



Bow Shackle

Grades : 316 | 304
Material: GI | SS
Thread Types: Metric



**Turnbuckle,
Hook & Eye**

Grades : 316 | 304
Material: GI | SS
Thread Types: Metric



**Turnbuckle,
Eye And Eye**

Grades : 316 | 30
Material: GI | SS
Thread Types: Metric



**Turnbuckle,
Hook And Hook**

Grades : 316 | 304
Material: GI | SS
Thread Types: Metric



**Turnbuckle,
Jaw And Jaw**

Grades : 316 | 304
Material: GI | SS
Thread Types: Metric



Swivel Eye And Eye

Grades : 316 | 304
Material: GI | SS
Thread Types: Metric



**Swivel, Jaw
And Jaw**

Grades : 316 | 304
Material: GI | SS
Thread Types: Metric



Swivel Eye And Jaw

Grades : 316 | 304
Material: GI | SS
Thread Types: Metric



Screw Eyes

Grades : 316 | 304
Material: GI | SS
Thread Types: Metric



U Bolt

Grades : 316 | 304
Material: GI | SS
Thread Types: Metric



**Heavy Duty
Eye Bolt**

Grades : 316 | 304
Material: SS
Thread Types: Metric



Eye Bolt

Grades : 304
Material: GI | SS
Thread Types: Metric



**DIN 580
Lifting Eye Bolt**

Grades : 316 | 304
Material: GI | MS | SS
Thread Types: Metric | UNC



Hooks – Eb Welded

Grades : 316 | 304
Material: GI | SS
Thread Types: Metric



Ring Eye Bolt

Grades : 316 | 304
Material: GI | SS
Thread Types: Metric



**DIN 582
Lifting Eye Nut**

Grades : 316 | 304
Material: GI | MS | SS
Thread Types: Metric | UNC



Wire Rope Clip

Grades : 316 | 304
Material: GI | SS
Thread Types: Metric | UNC



Thimble

Grades : 316 | 304
Material: GI | SS
Thread Types: Metric



Round Ring

Grades : 316 | 304
Material: GI | SS
Thread Types: Metric



Snap Carbine Hook

Grades : 316 | 304
Material: GI | SS
Thread Types: Metric



**Hooks – Snap
Carbine Hook, SI**

Grades : 316 | 304
Material: GI | SS
Thread Types: Metric



**Hooks – Snap
(Carbine) Hook, Se**

Grades : 316 | 304
Material: GI | SS
Thread Types: Metric



**Spring Hook
With Eyelet**

Grades : 316 | 304
Material: SS
Thread Types: Metric



**Lock Spring Hook With
Eyelet / Safety Latch**

Grades : 316 | 304
Material: SS
Thread Types: Metric



Spring Snap

Grades : 316 | 304
Material: SS
Thread Types: Metric



Rigid Eye Snap

Grades : 316 | 304
Material: SS
Thread Types: Metric



**Snap Shackle
Fixed Eye**

Grades : 316 | 304
Material: SS
Thread Types: Metric



Swivel Eye Bolt Snap

Grades : 316 | 304
Material: SS
Thread Types: Metric



Diamond Pad

Grades : 316 | 304
Material: SS
Thread Types: Metric



Square Pad

Grades : 316 | 304
Material: SS
Thread Types: Metric



**Square Pad
Swivel Eye**

Grades : 316 | 304
Material: SS
Thread Types: Metric



Round Pad

Grades : 316 | 304
Material: SS
Thread Types: Metric



Oblong Pad

Grades : 316 | 304
Material: SS
Thread Types: Metric



Square Pad With Ring

Grades : 316 | 304
Material: SS
Thread Types: Metric



Ring Catch

Grades : 316 | 304
Material: SS
Thread Types: Metric



Dee Ring Welded

Grades : 316 | 304
Material: SS
Thread Types: Metric



Rope Cleat

Grades : 316 | 304
Material: SS
Thread Types: Metric



Quick Link

Grades : 316 | 304
Material: SS
Thread Types: Metric



Cover Latch

Grades : 316 | 304
Material: SS
Thread Types: Metric



Cover Latch Casting

Grades : 316 | 304
Material: SS
Thread Types: Metric



Square Hook

Material: GI
Thread Types: Metric



S Hook

Grades : 304
Material: SS
Thread Types: Metric



**Saddle Clip /
Eye Strap**

Grades: 316 | 304
Material: GI | SS
Size Measurements In: Metric



Door Hook

Grades : 304 etc.
Material: SS
Thread Types: Metric



Cup Hook

Grades : 304
Material: SS
Thread Types: Metric



Low Flat Cleat

Grades : 316
Material: SS
Thread Types: Metric



Pad Eye

Grades : 316 | 304
Material: SS
Thread Types: Metric



**Pelican Hook
(With Link)**

Grades : 316 | 304
Material: SS
Thread Types: Metric

RIVETS, PIN INSERTS



DIN 472
Retaining Rings
Internal Circlip

Grades: 304.
Material: MS | SS



DIN 471
Retaining Rings
External Circlip

Grades: 304.
Material: MS | SS



DIN 6799 E
Style External
Retaining Ring

Grades: 304.
Material: MS | SS



DIN 94
Cotter (Split) Pin

Grades : 316 | 304
Material: GI | SS



DIN 11024
R PIN

Grades : 316 | 304
Material: GI | SS | Yellow



DIN 11024 R
Pin Double Ring

Grades : 304
Material: GI | SS | Yellow



DIN 1434
Clevis Pin

Grades : 316 | 304
Material: SS



DIN 1481
Spring Dowel Pin

Grades: 304
Size: Metric
Material: MS | SS



DIN 7
Dowel
(Cylindrical) Pin

Size: Metric
Material: MS



DIN 662
Round Head Rivet

Grades: 304
Size: Metric
Material: MS | SS | Aluminum



DIN 664
Flat Round Head Rivet

Size: Metric
Material: Aluminum



Self Tapping
Threaded Inserts

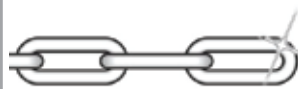
Grades: 304
Material: Yellow | SS
Thread Types: Metric

OTHER THINGS



DIN 301
Hose Clamps With
Worm Gear Drive Type A

Grades: 316 | 304.
Material: GI | SS
Thread Types: Metric



DIN 763
Chain Long Link

Grades: 316 | 304
Material: GI | SS
Thread Types: Metric



DIN 766
Chain Short Link

Grades: 316 | 304
Material: GI | SS
Thread Types: Metric



Door Hinge, Equal

Grades: 316 | 304
Thread Types: Metric



**Door Hinge,
Unequal**

Grades: 316 | 304 etc.
Thread Types: Metric



**Flush Door Hinges
Equal**

Grades : 316 | 304 etc.
Thread Types: Metric



Butt Hinge

Grades: 316 | 304
Thread Types: Metric



**Din 6336 K
Star Grip,
Type K, Knob Bolt**

Material : Plastic
Thread Types: Metric



**DIN 6336
L Star Grip,
Type L Knob Bolt**

Material : Plastic
Thread Types: Metric



Turning Knob

Material : Plastic
Thread Types: Metric



Five Lobe Grip

Material : Plastic
Thread Types: Metric



Disc Knob

Material : Plastic
Thread Types: Metric



**Wire Rope,
Steel Core**

Grades: 316 | 304
Material: GI | SS



Wire Rope, Pvc Coated

Grades: 316 | 304
Material: GI | SS



Staple Pins

Material: Mild Steel



**DIN 906
Hexagon
Socket Plug**

Grades: 316 | 304
Material: MS | SS
Thread Types: NPT | BSP



**DIN 908
Hexagon Socket Screw
Plug With Collar**

Grades: 316 | 304
Material: MS | SS
Thread Types: NPT | BSP



**DIN 910
Hexagon Head Flanged
Screw Plug**

Grades: 316 | 304
Material: MS | SS
Thread Types: NPT | BSP



Plastic Dome Caps

Thread Types: Metric
Material : Plastic



Tube Cap, Circular

Thread Types: Metric
Material : Plastic



Tube Cap, Conical

Material : Rubber
Thread Types: Metric



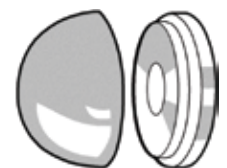
Tube Cap, Square

Material : Plastic
Thread Types: Metric



**Tube Cap,
Rectangular**

Material : Plastic
Thread Types: Metric



Screw Cap

Material : Plastic
Thread Types: Metric

OUR PROJECTS

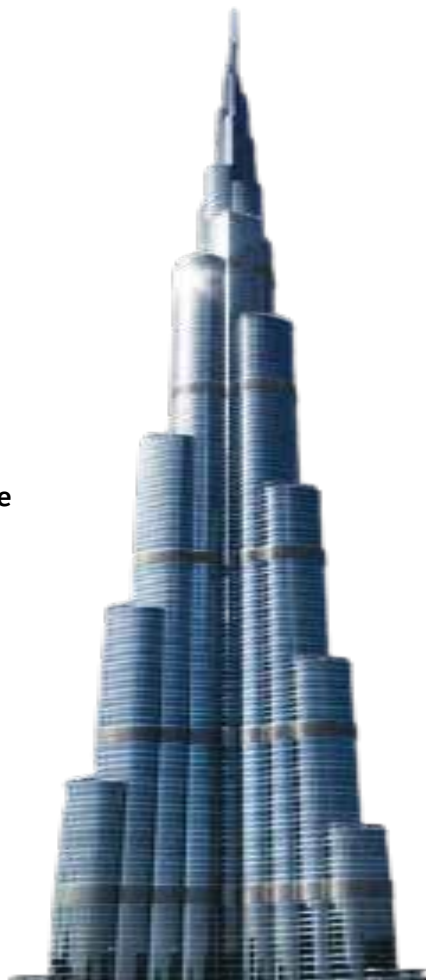


Maqta Bridge (Abu Dhabi)



Shk Zayed University

The Burj Khalifa building is made up of two different types of structures. All floors below 150 are made of the traditional concrete structure. However, floor number 156 to the top is entirely steel structures to which Hussaini Brothers has had the privilege of supplying High Strength Friction Grip bolts.



Burj Khalifa

Hussaini Brothers has supplied a range of 10.9 grade bolts to Burj Khalifa, an 830m-tall tower. Specifically, a range of ASTM A490M grade bolts, nuts and washers were supplied ranging in diameters from M16 to M36.



Dubai International Airport & Maktoum International Airport



Dubai Metro



Sohar Port

OUR INDUSTRIES



Construction & Structural Steel Industry



Oil & Petrochemical Industries



Automotive Sector



Ship Building



Electrical Switchgear



Furniture

Standard Range / Non-standard Product

The following is the range of industrial engineering fasteners supplied by Hussaini bros. Threaded screws in metric / imperial sizes , Threaded tie rods in metric / imperial sizes, Topping thread screws Various heads of screws in socket range, Range of various grades in industrial engineering fasteners, High tensile steel in grade 8.8/10.9 / 12.9, Stainless steel in grade AISI304 A2-70 / AISI 316 A4-70 / AISI 316L A4-80L, Solid extruded brass/aluminium / cooper fasteners. The fasteners supplied by Hussaini Bros. adhere to the following standards.

ASTM- STD (AMERICAN STANDARD IN METRIC / IMPERIAL AS IN UNC SIZES)

BS- STD (BRITISH STANDARD IN METRIC / IMPERIAL AS IN UNC/UNF/BSF/BSW/BA)

UNI-STD (ITALIAN STANDARD IN METRIC/METRIC FINE)

ISO-STD (INTERNATIONAL STANDARD IN METRIC/METRIC FINE)

DIN-STD (GERMAN STANDARD IN METRIC/METRIC FINE)

JIS-STD (JAPANESE STANDARD IN METRIC FINE)

Items adhering to these standards are available in various platings (coatings) such as Black, self colour, Electro galvanize Hot-dip galvanize BS-729 / hot-dip galvanize ASTM-153 and Cadmium-plated.

Our Branches

Deira Branch:

Naif Road, Al Nakheel Street

Al Safeer Plaza, Shop No-1

Ground Floor - Dubai

Tel: +971 4 2223024 / 2231411

Email: deirasales@husainibrothers.com

Al Quoz Headquarters:

28 11 B St - Al Quoz Ind. Area 1 - Dubai

Tel: +971 4 2274781, P.O.Box: 3990

Website: www.husainibrothers.com

Email: sales@husainibrothers.com

Jaddaf Branch:

Al Jaddaf Ship Docking Yard

Gate1 Shop no.4,

Creek metro station - Dubai

Tel: +971 4 3243761, Fax: +971 4 3241137

Email: sales@husainibrothers.com

Husaini
Brothers



Fasteners specialist since 1968

Husaini & Brothers L.L.C

P.O.Box: 3990
28, 11 B, Street,
Al Quoz Ind. Area 1
Dubai - U.A.E
Tel.: +971 4 2274781

Website: www.husainibrothers.com

Email: sales@husainibrothers.com



ISO 9001: 2015 CERTIFIED COMPANY