

德宇鑫科技 · 产品手册

DEYUXIN TECHNOLOGY · PRODUCT CATALOG



专业提供流体控制解决方案的泵阀专家
Pump&Valve specialist - Devoted to fluid control solutions

深圳市德宇鑫科技有限公司
SHENZHEN DEYUXIN TECHNOLOGY CO.,LTD

地址：深圳市龙岗区平湖镇辅城坳工业区长龙东路21号

电话：86-755-29533887 29537661

传真：86-755-29537662

邮箱：sales08@dyxminiump.com

网址：www.dyxminiump.com

深圳市德宇鑫科技有限公司
SHENZHEN DEYUXIN TECHNOLOGY CO.,LTD

公司简介 About US



深圳市德宇鑫科技有限公司成立于2007年，注册资金为500万元人民币。总部设在深圳，拥有生产厂房面积约1.5万 m²，现有500多名在职优秀员工。并于2011年在湖南常德德山工业园设立内地生产基地，同年10月在香港成立德宇鑫实业有限公司。公司自成立以来，引进行业内资深专家和高端技术人才，专注于研发、生产各种精密微型泵，阀，电磁铁，微型机电组件等产品。并

不断扩建产线，增添设备，目前，公司拥有行业先进自动化生产线、自动化测试设备等，制造流程严格依照ISO9001管理体系进行。产品已通过RoHS、REACH、FDA、CE-EMC等认证，拥有多项发明专利及数十项实用新型专利。

公司主营产品涵盖气泵、真空泵、水泵、活塞泵、气阀、水阀、电磁铁等，广泛应用于医疗、大健康、母婴护理、卫浴、生活家电、清洁电器、消费类电器、美妆等产业，客户群体涵盖北美、欧洲、亚太等30多个国家及地区。

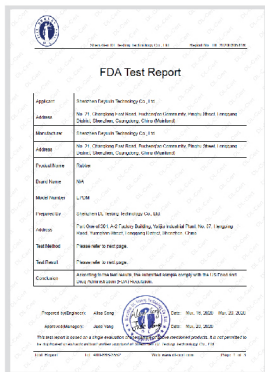
Shenzhen Deyuxin Technology, Ltd was founded in 2007 by senior experts and management team, mainly specialized in designing and manufacturing micro air pump, water pump, vacuum pump, piston pump, micro solenoid air valve, and water valve.

Until now, we have gained praises from clients around the world, this attributes to our efficient management and strict requirements on quality in company's continuous development and innovation. Our products conforms to most advanced international safety standards and environmental protection requirements, such as RoHS, REACH, FDA, CE-EMC etc. Yet we have been certified by the ISO9001 Certificate, and other standards, now with the customers from Europe, North America, Oceania and Asia-Pacific region, over 30 countries around the world.

The micro pumps and solenoid valves from our company are widely used for blood pressure monitor, breast pump, smart sweeping machine, coffee machine, water dispenser, soap dispenser, massage / medical / health / baby-care products and household appliance, etc. We have experienced significant growth in the past years and continues to move upward to address the needs of the global market through improved technology.

Professional engineers, hard-working staff and advanced equipment allow us to design with the requirements of the OEM, make variety customized products quickly and reliably. Based on the spirit of "Customer Foremost" and "Excellent Service", we continues to invest in R & D, Staff Training, Cost Control with modern management. We hope to satisfy you by providing best products and excellent service.





FDA认证



RoHS证书



ISO 9001



专利证书



试验设备



测试设备



办公一角



生产车间

自动化设备





一、精准行业解决方案 Precision industry solutions

P1 / 血压计解决方案
Blood pressure monitor solution
吸奶器解决方案
Electric breast pump solution
自动洗手液 / 酒精消毒机解决方案
Automatic soap dispenser
Automatic alcohol sprayer

P2 / 电动喷水 / 蒸汽拖把解决方案
Electric spray/ steam mop solution
饮水机、咖啡机解决方案
Water dispenser / Coffee machine solution
吸黑头仪解决方案 Blackhead suction solution

P3 / 电动喷水拖把解决方案 Electric water mop solution
智能马桶解决方案 Smart toilet bidet
按摩器解决方案 Massager solution

P4 / 眼部按摩器解决方案 Eye massager solution
真空包装机解决方案 Vacuum sealer solution
注氧仪解决方案 Oxygen injection solution
雾化器解决方案 Nebulizer solution

二、微型气泵系列 Air pump

DQB020-A、DQB020-FB	01
DQB030-B	02
DQB100-B、DQB100-C	03
DQB370-B2-1	04
DQB380-C、DQB380-E	05
DQB400-B	06
DQB421-A、DQB421-FB	07
DQB421-C	08
DQB500-A、DQB500-FB	09

三、微型真空泵系列 Vacuum pump

DQB031-FB5、DQB130-FB	10
DQB320-FB、DQB380-FB	11
DQB380-FB-3、DQB380-FB-3静音款	12

四、微型水泵系列 Water pump

DSB020-A、DSB020-B	13
DSB030-C、DQB031-SB	14
DSB030-B	15
DQB412-SB、DSB412-H	16
DSB413-A、DSB413-C	17

DSB413-B、DSB413-B-2	18
DSB413-B-1	19
DSB413-H、DSB413-G-4	20
DSB413-G-2、DSB413-G-5	21
DSB413-G-3	22
DSB415-A	23
DSB413-B-2 精准流量泵	24
DYX-SPS-01/02/03 电磁泵	25
DSB130-A	26

五、活塞泵系列 Piston pump

DHB-ZK12、DHB-ZK65	27
-------------------	----

六、微型气阀系列 Air valve

DQF1-3A、DQF1-6A	28
DQF1-3C-1	29
DQF1-6B-1、DQF2-6B	30
DQF-A、DQF3-6A	31
DQF3-6A-7两联/六联	32

七、微型水阀系列 Water valve

DSF2-A	33
DSF2-B、DSF3-A	34

血压计解决方案 Blood pressure monitor solution

▲ 臂式血压计 Upper arm type blood pressure monitor

DQB370-B2-1&DQF1-6A

详见第4页及28页 page 4&28

▲ 腕式血压计 Wrist type blood pressure monitor

DQB030-A&DQF1-3A

详见第2页及28页 page 2&28



吸奶器解决方案 Electric breast pump solution

▲ 吸奶器 Electric breast pump

DQB380-FB&DQF1-6B-1

DQB320-FB&DQF1-6B-1

详见第11页及30页 Page 11&30



自动洗手机/酒精消毒机解决方案

Automatic soap dispenser/ Automatic alcohol sprayer

▲ 自动洗手机 Automatic soap dispenser

DSB413-H 详见第20页 Page 20

DSB413-G-4 详见第20页 Page 20

DSB413-G-2 详见第20页 Page 21

DSB413-G-5 详见第20页 Page 21

▲ 酒精消毒机 Automatic alcohol sprayer

DSB413-G-3 详见第22页 Page 22



电动喷水/蒸汽拖把解决方案 Electric spray / steam mop solution

▲ 电动喷水拖把 Electric spray mop

DSB412-H 详见第16页 Page 16

▲ 电动蒸汽拖把 Electric steam mop

DYX-SPS-03 详见第25页 Page 25



饮水机、咖啡机解决方案

Water dispenser/Coffee machine solution

▲ 饮水机 Water dispenser

DSB413-B 详见第18页 Page 18

DSB413-B-1 详见第19页 Page 19

▲ 咖啡机 Coffee machine

DSB413-B-2 详见第18页 Page 18



吸黑头仪解决方案 Blackhead suction solution

▲ 吸黑头仪 Blackhead suction solution

DQB380-FB-3&DQB380-FB-3静音款

详见第12页 Page 12



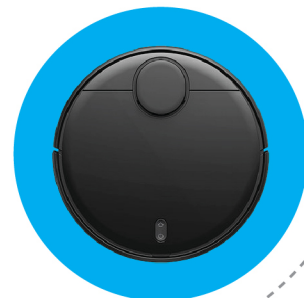
智能拖地机器人解决方案 Smart sweeping machine solution

▲智能扫地机 Smart sweeping machine

DQB020-A 详见第1页 Page 1

DSB020-A 详见第13页 Page 13

DQB031-SB 详见第14页 Page 14



智能马桶解决方案 Smart toilet bidet

▲智能马桶 Smart toilet bidet

DQB380-C 详见第5页 Page 5

DSB413-A&DSB413-C 详见第17页 Page 17



按摩器解决方案 Massager solution

▲按摩器 Massager

DQB400-B 详见第6页 Page 6

DQB500-A 详见第9页 Page 9



眼部按摩器解决方案 Eye massager solution

▲眼部按摩器 Eye massager

DQB100-C 详见第3页 Page 3

DQF-A 详见31页 Page 31



真空包装机解决方案 Vacuum sealer solution

▲真空包装机 Vacuum sealer

DQB380-FB 详见第11页 Page 11

DHB-ZK12&DHB-ZK65 详见第27页 Page 27



注氧仪解决方案 Oxygen injection solution

▲注氧仪 Oxygen injection

DQB421-C 详见第8页 Page 8



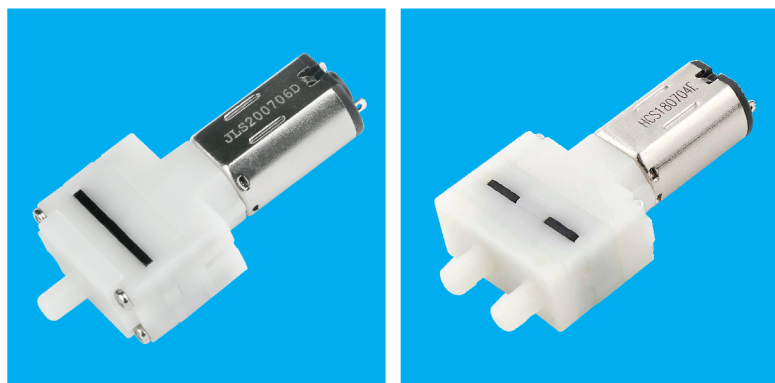
雾化器解决方案 Nebulizer solution

▲雾化器 Nebulizer

DQB421-A

详见第7页 page 7



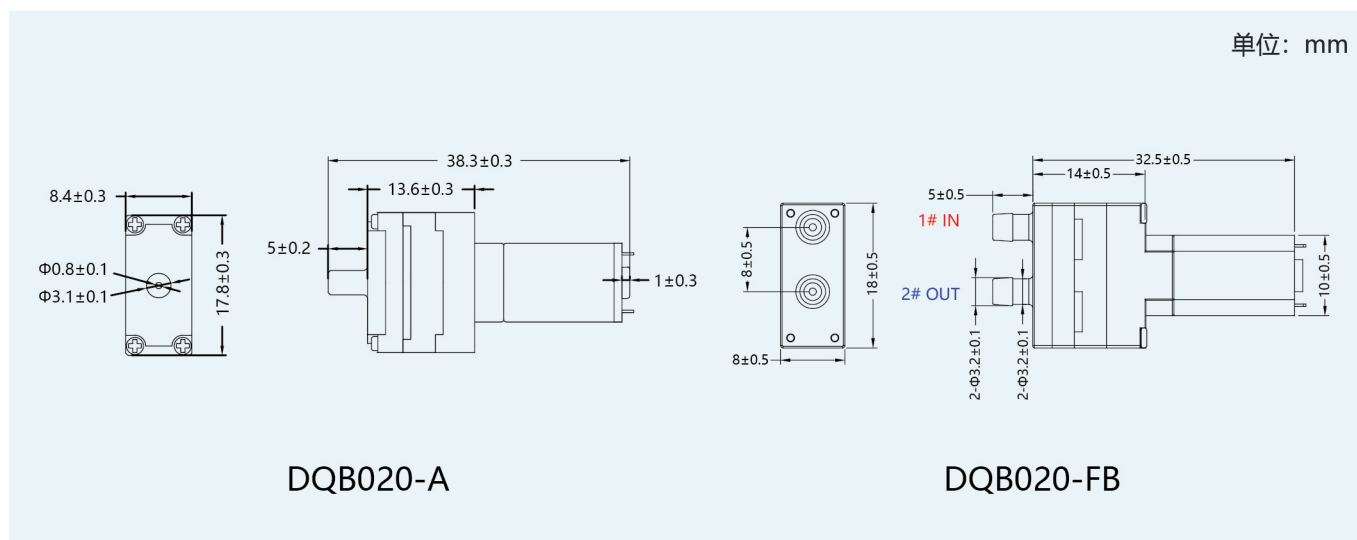


◎ 应用 Application

DQB020-A:
智能扫地机 Smart sweeping machine

DQB020-FB:
气体检测 Gas detection

◎ DQB020-A/FB 外形图 (DQB020-A/FB Dimension drawing)



◎ 参数 Technical Specification

Technical Specification		
产品型号	Product model	DQB020-A/FB
额定电压	Voltage	DC3.0V
电流	Current	<350mA
充气流量	Air flow rate	>0.4L/Min
压力范围	Pressure	300-400mmHg
密封性	Leakage	接100CC容器, 充气压力从0到280±10mmHg之后停止充气, 安定30秒后测其减少之压力值小于6mmHg/min <6mmHg/min (with a 100cc tank, inflate air from 0 to 280mmHg±10mmHg, then stop for 30 secs)
介质	Media	空气 Air
使用寿命	Life cycle	开1秒, 停1秒为一循环, 测试 100, 000 次以上 >100,000cycles (work for 1sec and stop for 1sec as a cycle)
使用温度范围	Working temperature	5°C ~ 55°C
产品净重	Product N.W	8g
噪音	Noise	将气泵之下垫5cm之海绵, 距噪音计30cm之处 (< 62dB) <62dB (on a 5cm sponge, 30cm away from noise meter)

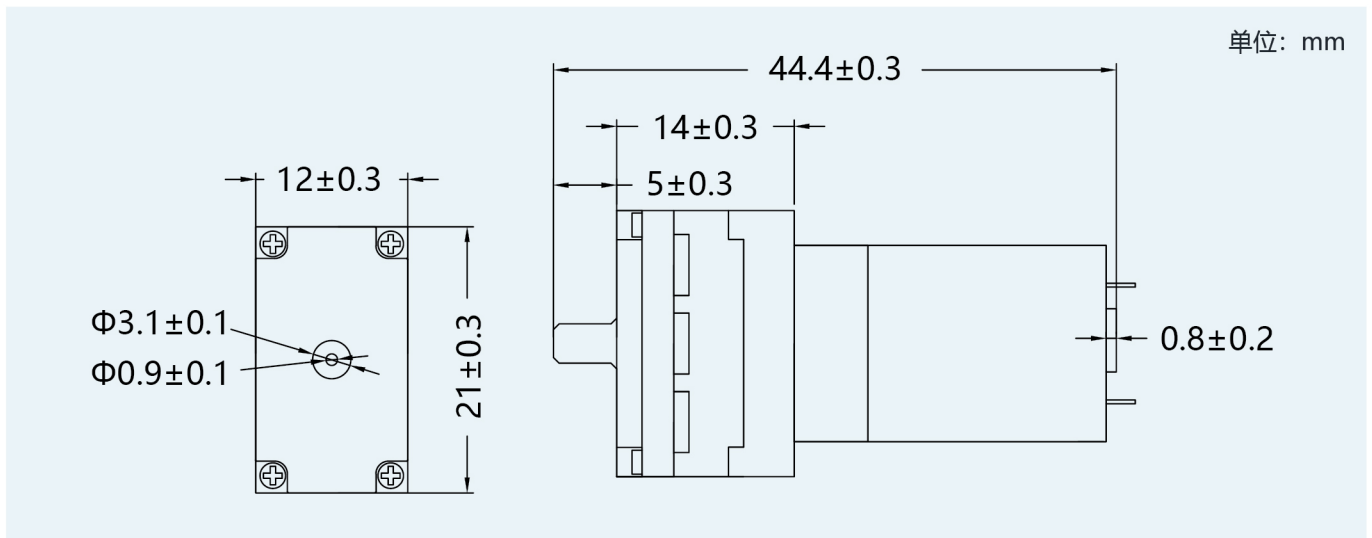


◎ 应用 Application

DQB030-A:

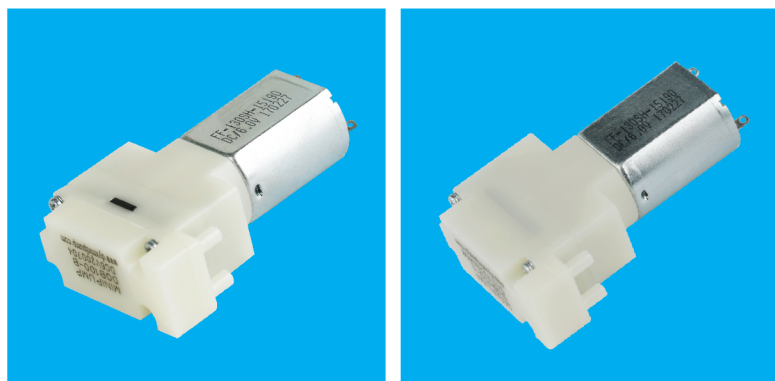
腕式血压计 Wrist type blood pressure monitor

◎ DQB030-A 外形图 (DQB030-A Dimension drawing)



◎ 参数 Technical Specification

Technical Specification		
产品型号	Product model	DQB030-A
额定电压	Voltage	DC3.0V
电流	Current	<350mA
充气流量	Air flow rate	0.5-1.2L/Min
压力范围	Pressure	360-550mmHg
密封性	Leakage	接100CC容器，充气压力从0到280±10mmHg之后停止充气，安定30秒后测其减少之压力值小于3mmHg/min <3mmHg/min (with a 100cc tank, inflate air from 0 to 280mmHg±10mmHg, then stop for 30 secs)
介质	Media	空气 Air
使用寿命	Life cycle	接100CC容器，开10秒，停5秒为一循环，测试 30, 000 次以上 >30,000cycles (with a 100cc tank, work for 10secs and stop for 5secs as a cycle)
使用温度范围	Working temperature	5°C ~ 55°C
产品净重	Product N.W	15g
噪音	Noise	将气泵之下垫5cm之海绵，距噪音计30cm之处 (< 55dB) <55dB (on a 5cm sponge, 30cm away from noise meter)



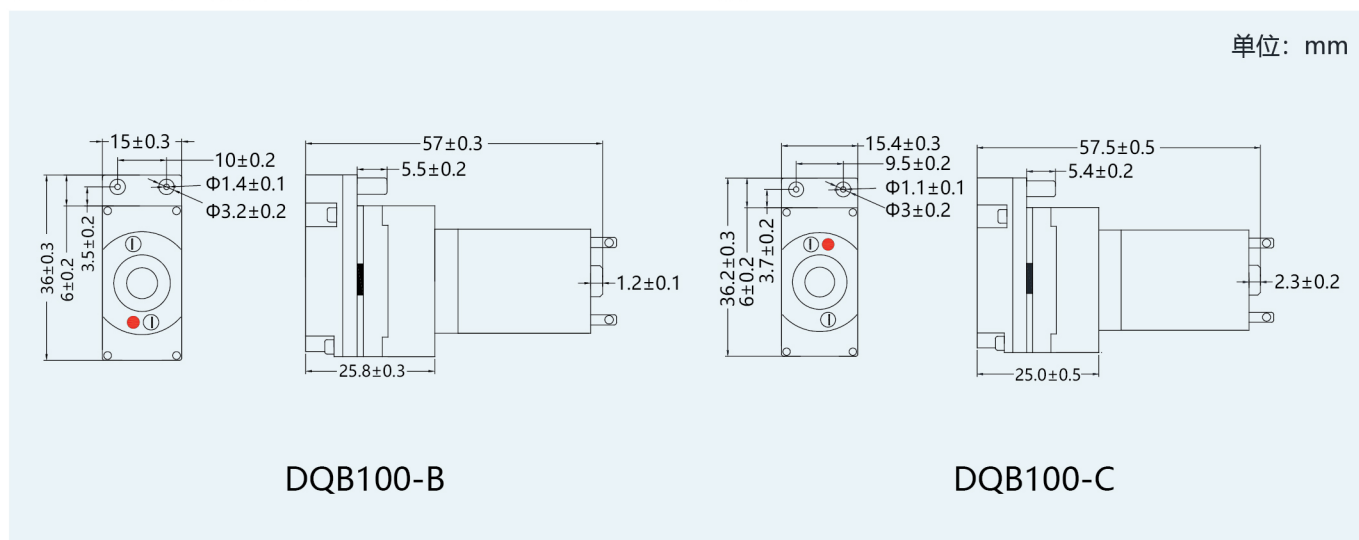
◎ 应用 Application

DQB100-B:
臂式电子血压计
Upper arm type blood pressure monitor

DQB100-C:

眼部按摩器
Eye massager

◎ DQB100-B/C 外形图 (DQB100-B/C Dimension drawing)



◎ 参数 Technical Specification

		Technical Specification	
产品型号	Product model	DQB100-B	DQB100-C
额定电压	Voltage	DC6.0V	DC3.7V
电流	Current	<350mA	<300mA
充气流量	Air flow rate	1.0-1.5L/Min	1.0-2.0L/Min
压力范围	Pressure	360-600mmHg	360-600mmHg
密封性	Leakage	接200CC容器, 充气压力从0到280±10mmHg之后停止充气, 安定30秒后测其减少之压力值小于6mmHg/min <6mmHg/min (with a 200cc tank, inflate air from 0 to 280mmHg±10mmHg, then stop for 30 secs)	
介质	Media	空气 Air	
使用寿命	Life cycle	接200CC容器, 开10秒, 停5秒为一循环, 测试 30, 000 次以上 >30,000cycles (with a 200cc tank, work for 10secs and stop for 5secs as a cycle)	
使用温度范围	Working temperature	5°C ~ 55°C	
产品净重	Product N.W	32g	
噪音	Noise	将气泵之下垫5cm之海绵, 距噪音计30cm之处 (< 55dB) <55dB (on a 5cm sponge, 30cm away from noise meter)	



◎ 应用

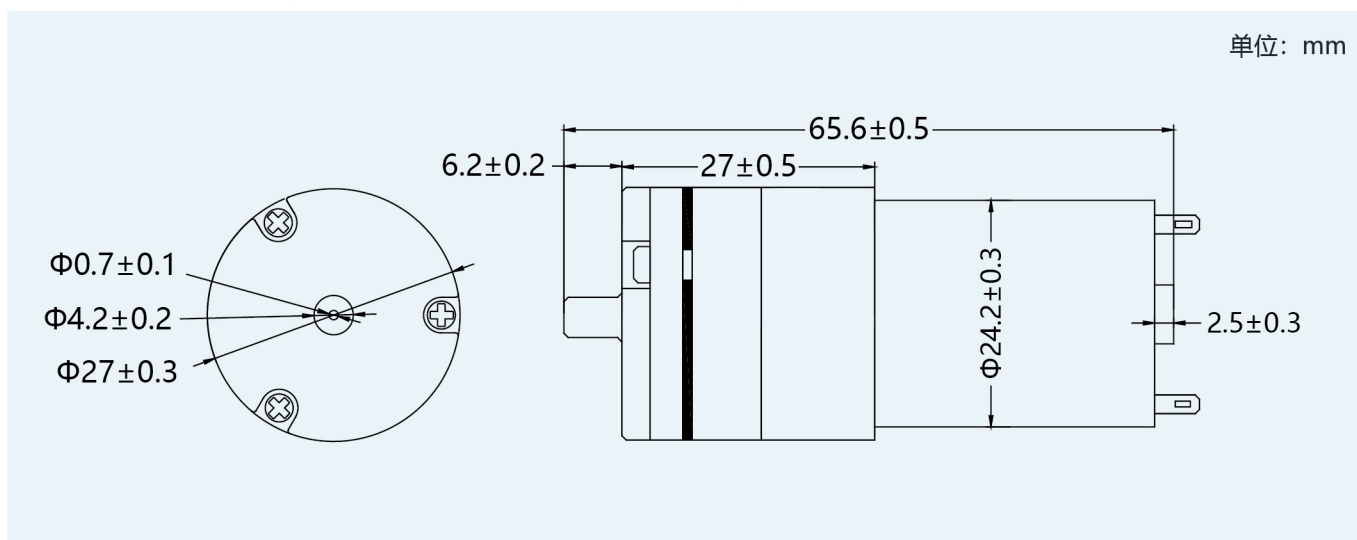
Application

DQB370-B2-1:

臂式电子血压计 Upper arm type blood pressure monitor

咖啡机 Coffee machine

◎ DQB370-B2-1外形图 (DQB370-B2-1 Dimension drawing)



◎ 参数 Technical Specification

		Technical Specification		
产品型号	Product model	DQB370-B2-1		
额定电压	Voltage	DC4.5V	DC6.0V	DC12.0V
电流	Current	<550mA	<350mA	<220mA
充气流量	Air flow rate	1.5-2.3L/Min		
压力范围	Pressure	400-650mmHg		
密封性	Leakage	接500CC容器, 充气压力从0到280±10mmHg之后停止充气, 安定30秒后测其减少之压力值小于3mmHg/min <3mmHg/min (with a 500cc tank, inflate air from 0 to 280mmHg±10mmHg, then stop for 30 secs)		
介质	Media	空气 Air		
使用寿命	Life cycle	接500CC容器, 开10秒, 停5秒为一循环, 测试 30, 000 次以上 >30,000cycles (with a 500cc tank, work for 10secs and stop for 5secs as a cycle)		
使用温度范围	Working temperature	5°C ~ 55°C		
产品净重	Product N.W	60g		
噪音	Noise	将气泵之下垫5cm之海绵, 距噪音计30cm之处 (< 58dB) <58dB (on a 5cm sponge, 30cm away from noise meter)		

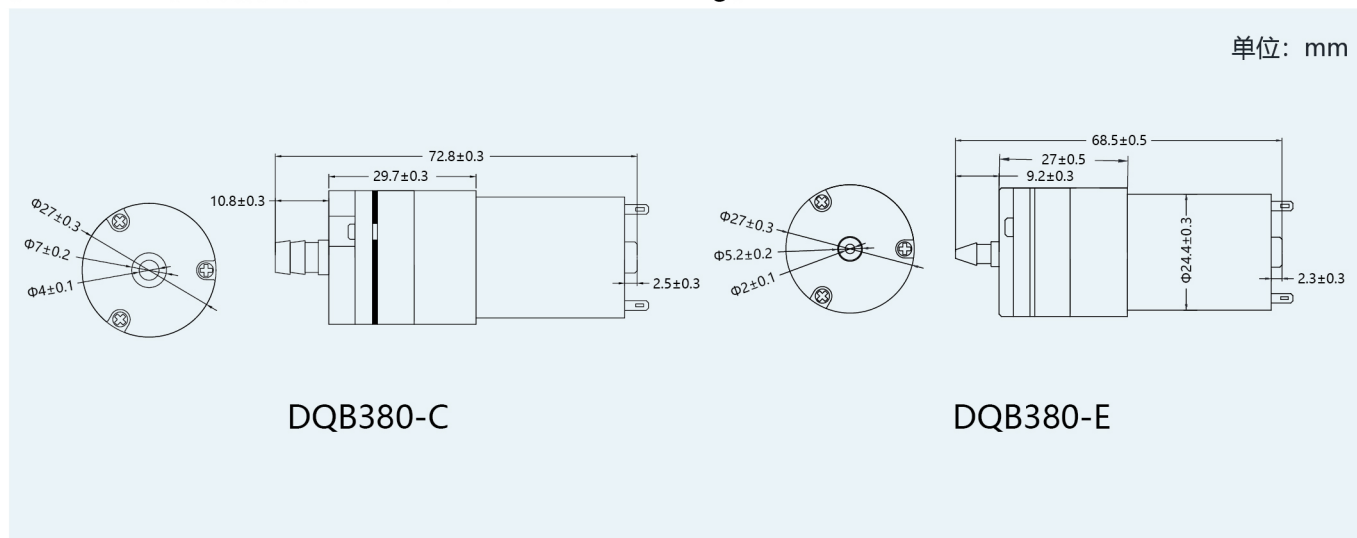


◎ 应用 Application

DQB380-C:
智能马桶 Smart toilet bidet

DQB380-E:
咖啡机 Coffee machine

◎ DQB380-C/E 外形图 (DQB380-C/E Dimension drawing)



◎ 参数 Technical Specification

Technical Specification				
产品型号	Product model	DQB380-C		DQB380-E
额定电压	Voltage	DC12.0V	DC24.0V	DC12.0V
电流	Current	<300mA	<100mA	<330mA
充气流量	Air flow rate	2.0-3.0L/Min		
压力范围	Pressure	550-800mmHg		
密封性	Leakage	接500CC容器, 充气压力从0到280±10mmHg之后停止充气, 安定30秒后测其减少之压力值小于6mmHg/min <6mmHg/min (with a 500cc tank, inflate air from 0 to 280mmHg±10mmHg, then stop for 30 secs)		
介质	Media	空气 Air		
使用寿命	Life cycle	接500cc容器, 开30秒, 停10秒为一循环, 1000H 1000 Hours (with a 500cc tank, work for 30secs and stop for 10secs as a cycle)	接500CC容器, 开30秒, 停10秒为一循环, 测试 30, 000 次以上 >30,000cycles (with a 500cc tank, work for 30secs and stop for 10secs as a cycle)	
使用温度范围	Working temperature	5°C ~ 55°C		
产品净重	Product N.W	60g		
噪音	Noise	将气泵之下垫5cm之海绵, 距噪音计30cm之处 (< 55dB) <55dB (on a 5cm sponge, 30cm away from noise meter)		



◎ 应用 Application

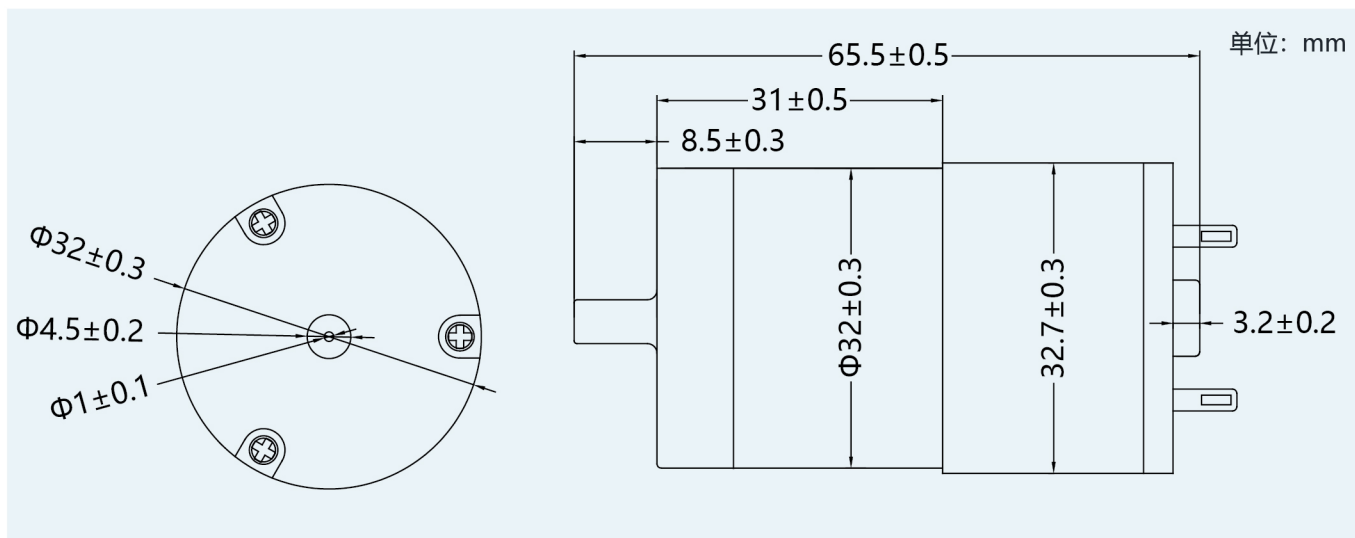
DQB400-B:

腰部按摩器 Waist massager

腿部按摩器 Leg massager

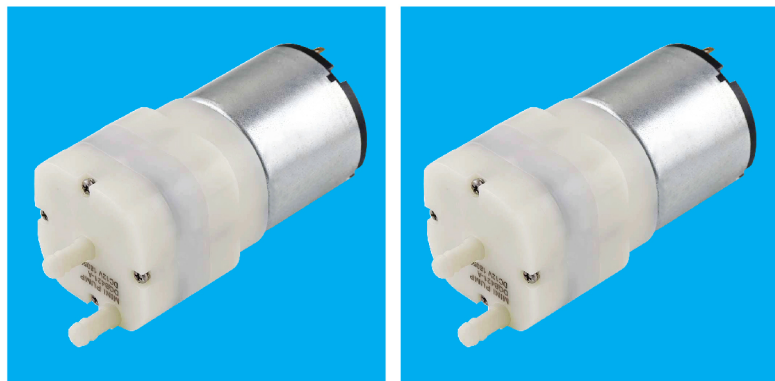
膝盖按摩器 Knee massager

◎ DQB400-B 外形图 (DQB400-B Dimension drawing)



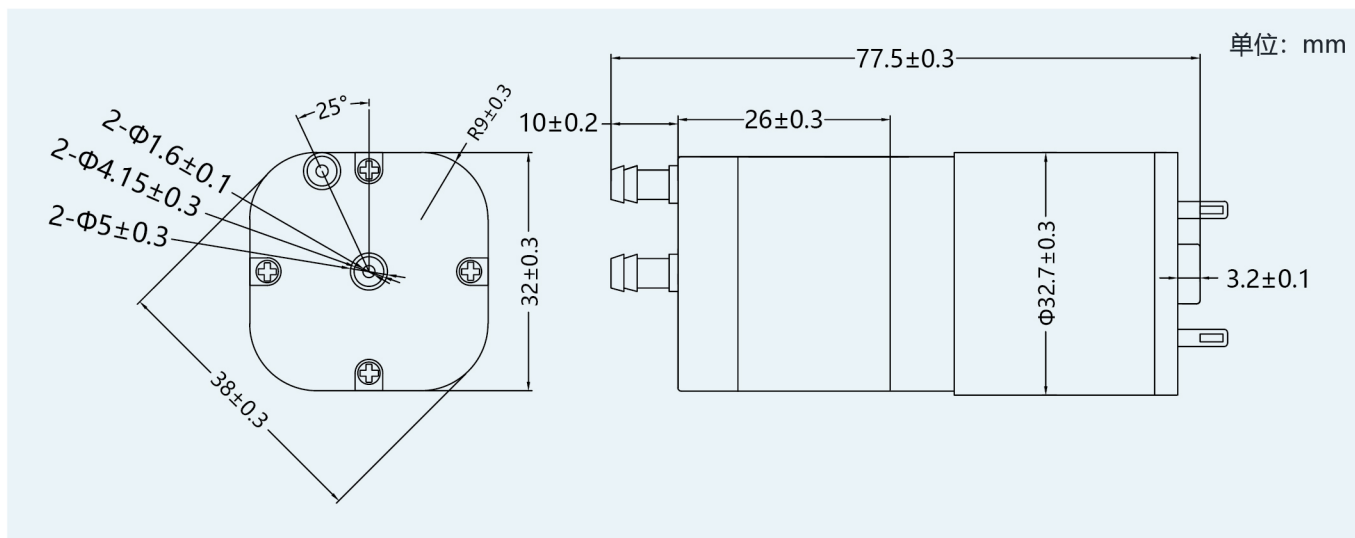
◎ 参数 Technical Specification

		Technical Specification	
产品型号	Product model	DQB400-B	
额定电压	Voltage	DC6.0V	DC12.0V
电流	Current	<650mA	<350mA
充气流量	Air flow rate	3.0-4.0L/Min	
压力范围	Pressure	550-800mmHg	
密封性	Leakage	接500CC容器，充气压力从0到280±10mmHg之后停止充气，安定30秒后测其减少之压力值小于15mmHg/min <15mmHg/min (with a 100cc tank, inflate air from 0 to 280mmHg±10mmHg, then stop for 30 secs)	
介质	Media	空气 Air	
使用寿命	Life cycle	接500CC容器，开10秒，停5秒为一循环，测试 400小时以上 >400hours (with a 500cc tank, work for 10secs and stop for 5secs as a cycle)	
使用温度范围	Working temperature	5°C ~ 55°C	
产品净重	Product N.W	68g	
噪音	Noise	将气泵之下垫5cm之海绵，距噪音计30cm之处 (< 55dB) <55dB (on a 5cm sponge, 30cm away from noise meter)	



- ◎ 应用 Application
- DQB421-A:
雾化器 Nebulizer
- DQB421-FB:
真空破壁机 Vacuum blender

◎ DQB421-A/FB 外形图 (DQB421-A/FB Dimension drawing)



◎ 参数 Technical Specification

Technical Specification							
产品型号	Product model	DQB421-A			DQB421-FB		
额定电压	Voltage	DC6.0V	DC12.0V	DC24.0V	DC6.0V	DC12.0V	DC24.0V
电流	Current	<1000mA	<550mA	<300mA	<1000mA	<550mA	<300mA
充气流量	Air flow rate	5.0-6.0L/Min					
压力范围	Pressure	600-850mmHg					
真空压力范围	Maximum vacuum pressure	-550mmHg					
密封性	Leakage	接500CC容器, 充气压力从0到280±10mmHg之后停止充气, 安定30秒后测其减少之压力值小于15mmHg/min <15mmHg/min (with a 500cc tank, inflate air from 0 to 280mmHg±10mmHg, then stop for 30 secs)					
介质	Media	空气 Air					
使用寿命	Life cycle	接500CC容器, 开10秒, 停5秒为一循环, 测试400小时以上 >400hours (with a 500cc tank, work for 10secs and stop for 5secs as a cycle)					
使用温度范围	Working temperature	5°C ~ 55°C					
产品净重	Product N.W	110g					
噪音	Noise	将气泵之下垫5cm之海绵, 距噪音计30cm之处 (< 55dB) <55dB (on a 5cm sponge, 30cm away from noise meter)					



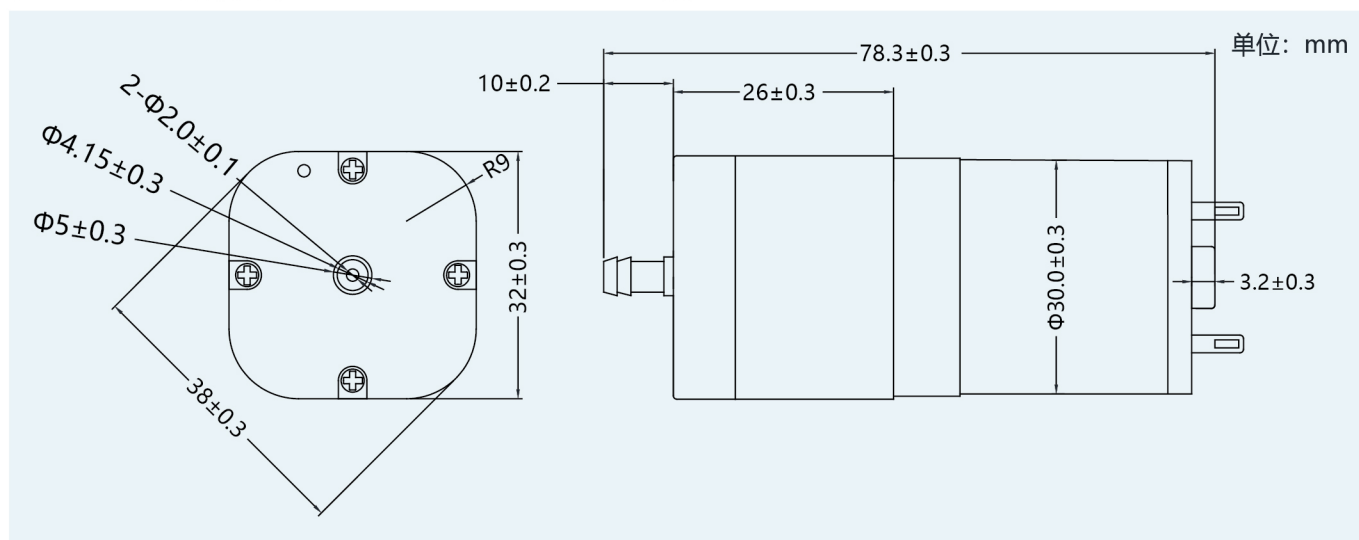
◎ 应用 Application

DQB421-C:

注氧仪 Oxygen injection

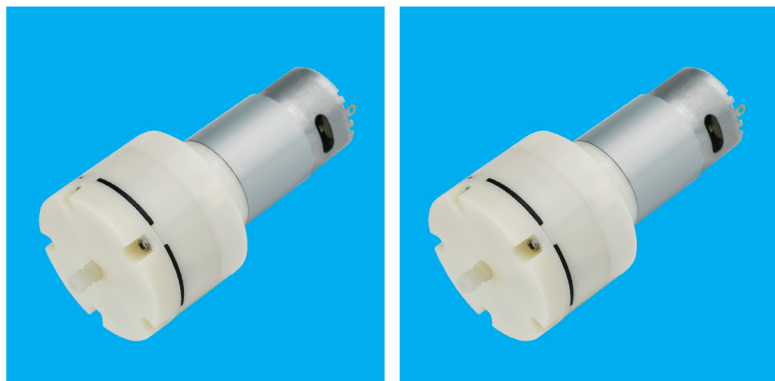
美容护理 Beauty-care equipments

◎ DQB421-C 外形图 (DQB421-C Dimension drawing)



◎ 参数 Technical Specification

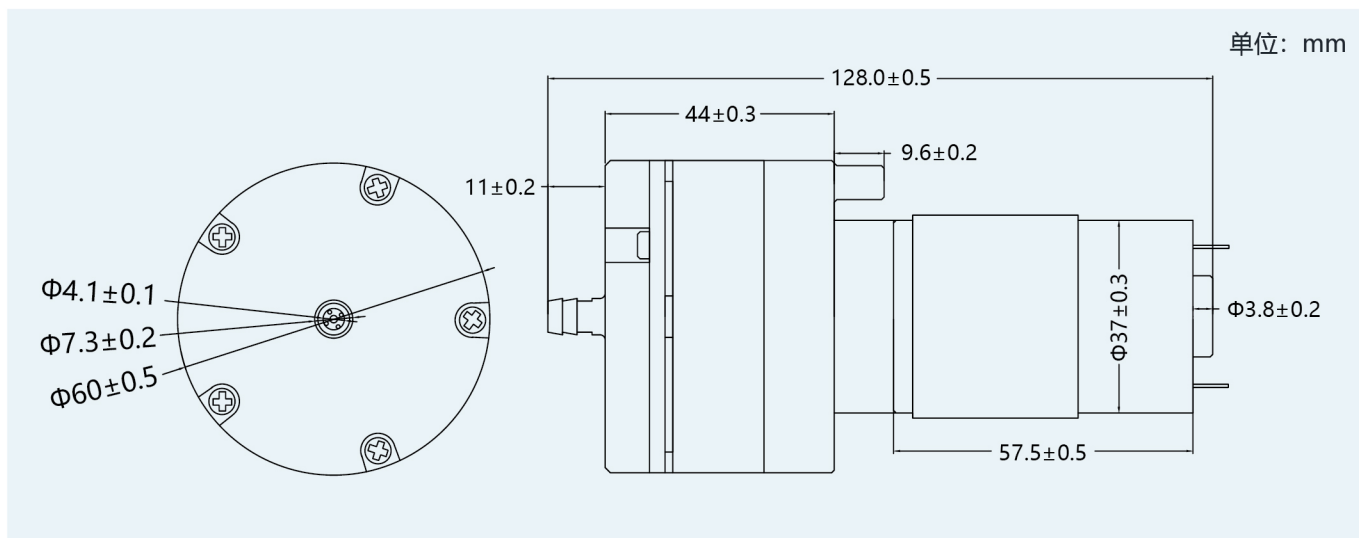
Technical Specification		
产品型号	Product model	DQB421-C
额定电压	Voltage	DC7.4V
电流	Current	<880mA
充气流量	Air flow rate	>5.5L/Min
压力范围	Pressure	>900mmHg
密封性	Leakage	接500CC容器，充气压力从0到280±10mmHg之后停止充气，安定30秒后测其减少之压力值小于6mmHg/min <6mmHg/min (with a 500cc tank, inflate air from 0 to 280mmHg±10mmHg, then stop for 30 secs)
介质	Media	空气 Air
使用寿命	Life cycle	接500CC容器，开10秒，停5秒为一循环，测试 95, 000 次以上 >95,000cycles (with a 500cc tank, work for 10secs and stop for 5secs as a cycle)
使用温度范围	Working temperature	5°C ~ 55°C
产品净重	Product N.W	85g
噪音	Noise	将气泵之下垫5cm之海绵，距噪音计30cm之处 (< 62dB) <62dB (on a 5cm sponge, 30cm away from noise meter)



◎ 应用 Application

DQB500-A/FB:
按摩器 Massage equipments

◎ DQB500-A/FB 外形图 (DQB500-A/FB Dimension drawing)



◎ 参数 Technical Specification

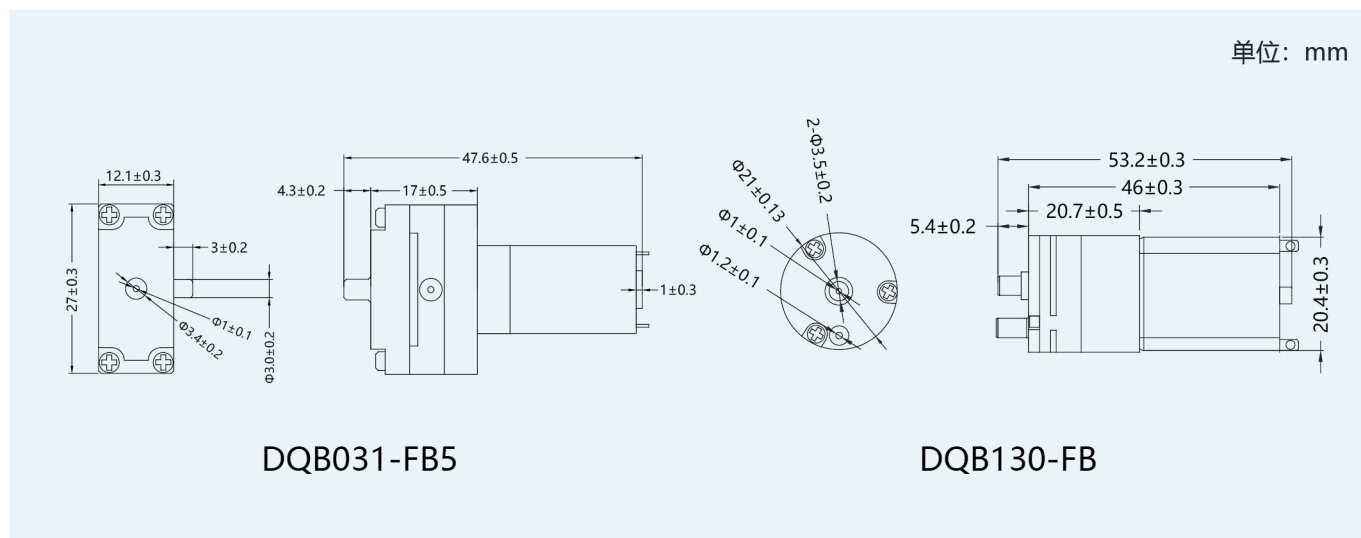
Technical Specification					
产品型号	Product model	DQB500-A		DQB500-FB	
额定电压	Voltage	DC6.0V	DC12.0V	DC6.0V	DC12.0V
电流	Current	<1350mA	<1000mA	<1350mA	<1000mA
充气流量	Air flow rate	10-16L/Min			
压力范围	Pressure	600-800mmHg			
真空压力范围	Maximum vacuum pressure	-400mmHg			
密封性	Leakage	接500CC容器, 充气压力从0到280±10mmHg之后停止充气, 安定30秒后测其减少之压力值小于15mmHg/min <15mmHg/min (with a 500cc tank, inflate air from 0 to 280mmHg±10mmHg, then stop for 30 secs)			
介质	Media	空气 Air			
使用寿命	Life cycle	接500CC容器, 开10秒, 停5秒为一循环, 测试 400小时以上 >400hours (with a 500cc tank, work for 10secs and stop for 5secs as a cycle)			
使用温度范围	Working temperature	5°C ~ 55°C			
产品净重	Product N.W	300g			
噪音	Noise	将气泵之下垫5cm之海绵, 距噪音计30cm之处 (< 55dB) <55dB (on a 5cm sponge, 30cm away from noise meter)			



◎ 应用 Application

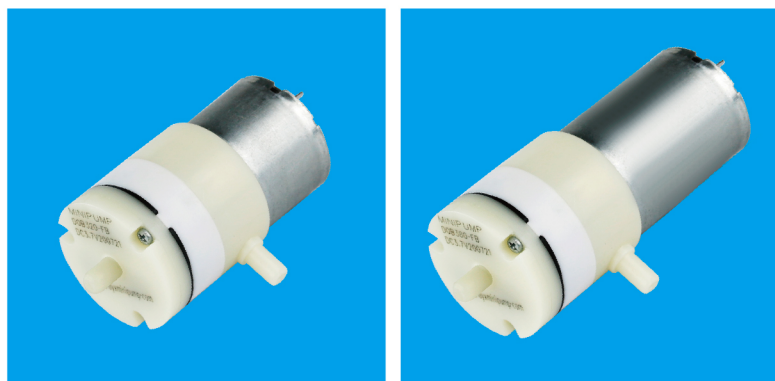
DQB031-FB5 / DQB130-FB:
 负压理疗 Negative pressure physiotherapy
 气体检测 Gas detection
 成人用品 Adult products

◎ DQB031-FB5 / DQB130-FB 外形图 (DQB031-FB5 / DQB130-FB Dimension drawing)



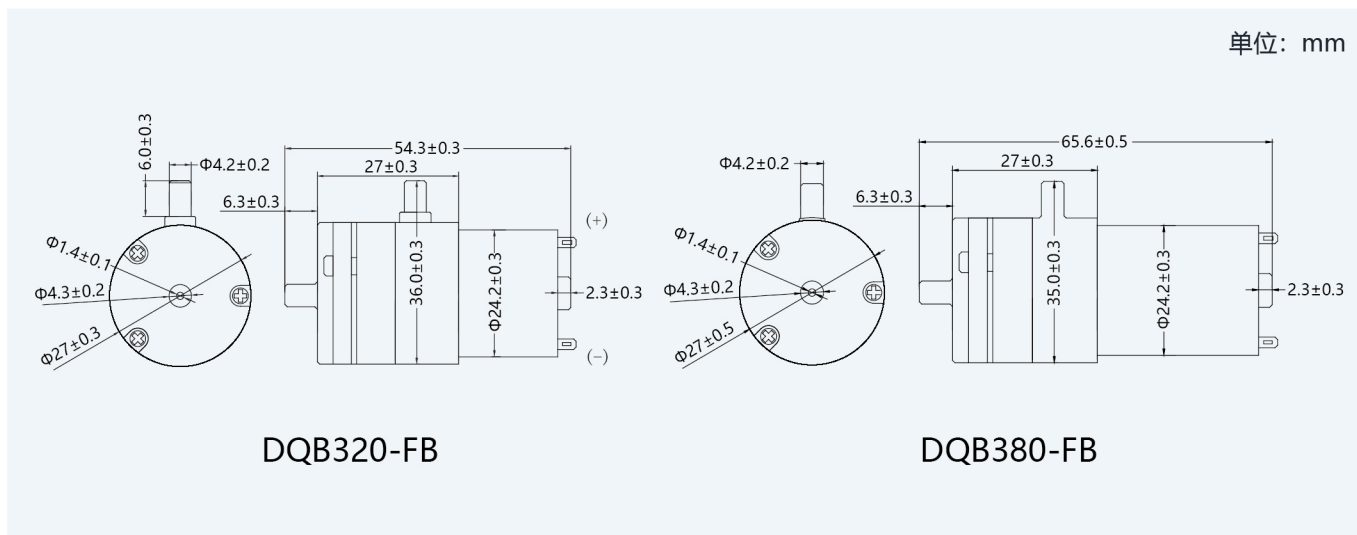
◎ 参数 Technical Specification

Technical Specification			
产品型号	Product model	DQB031-FB5	DQB130-FB
额定电压	Voltage	DC3.0V	DC3.7V
电流	Current	<500mA	<500mA
充气流量	Air flow rate	0.8-1.6L/Min	0.8-1.2L/Min
压力范围	Pressure	320-500mmHg	
真空压力范围	Maximum vacuum pressure	<-450mmHg	
介质	Media	空气 Air	
使用寿命	Life cycle	接100CC容器, 开2秒, 停1秒为一循环, 测试 30,000 次以上 >30,000cycles (with a 100cc tank, work for 2secs and stop for 1sec as a cycle)	接500CC容器, 开10秒, 停5秒为一循环, 测试 30,000 次以上 >30,000cycles (with a 500cc tank, work for 10secs and stop for 5secs as a cycle)
使用温度范围	Working temperature	5°C ~ 55°C	
产品净重	Product N.W	17g	28g
噪音	Noise	将气泵之下垫5cm之海绵, 距噪音计30cm之处 (<60dB) <60dB (on a 5cm sponge, 30cm away from noise meter)	



◎ 应用 Application
 DQB320-FB / DQB380-FB:
 吸奶器 Breast pump
 真空包装机 Vacuum sealer

◎ DQB320-FB / DQB380-FB 外形图 (DQB320-FB / DQB380-FB Dimension drawing)



◎ 参数 Technical Specification

Technical Specification					
产品型号	Product model	DQB320-FB		DQB380-FB	
额定电压	Voltage	DC3.7V	DC6.0V	DC3.7V	DC5.0V
电流	Current	<600mA	<370mA	<650mA	<400mA
充气流量	Air flow rate	2.5-3.5L/Min			
压力范围	Pressure	550-800mmHg			
真空压力范围	Maximum vacuum pressure	<-450mmHg			
介质	Media	空气 Air			
使用寿命	Life cycle	接500CC容器, 开1.7秒, 停0.8秒开半个小时停半个小时为一循环, 测试 95, 000 次以上 >95,000cycles (with a 500cc tank, work for 1.7secs and stop for 0.8secs as a cycle)			
使用温度范围	Working temperature	5°C ~ 55°C			
产品净重	Product N.W	36g		60g	
噪音	Noise	将气泵之下垫5cm之海绵, 距噪音计30cm之处 (< 60dB) <60dB (on a 5cm sponge, 30cm away from noise meter)			



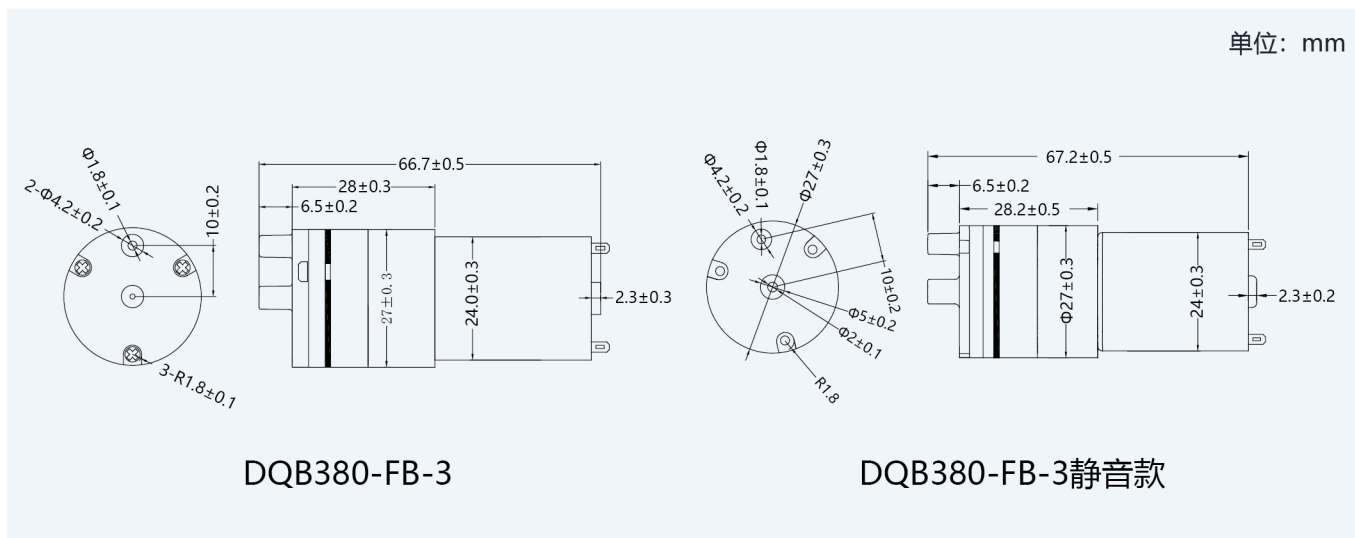
◎ 应用 Application

DQB380-FB-3 / DQB380-FB-3静音款:
吸黑头仪 Black head suction

◎ 产品特点

DQB380-FB-3静音款:
超静音 Super silent

◎ DQB380-FB-3 / DQB380-FB-3静音款 外形图 (DQB380-FB-3 / DQB380-FB-3静音款 Dimension drawing)



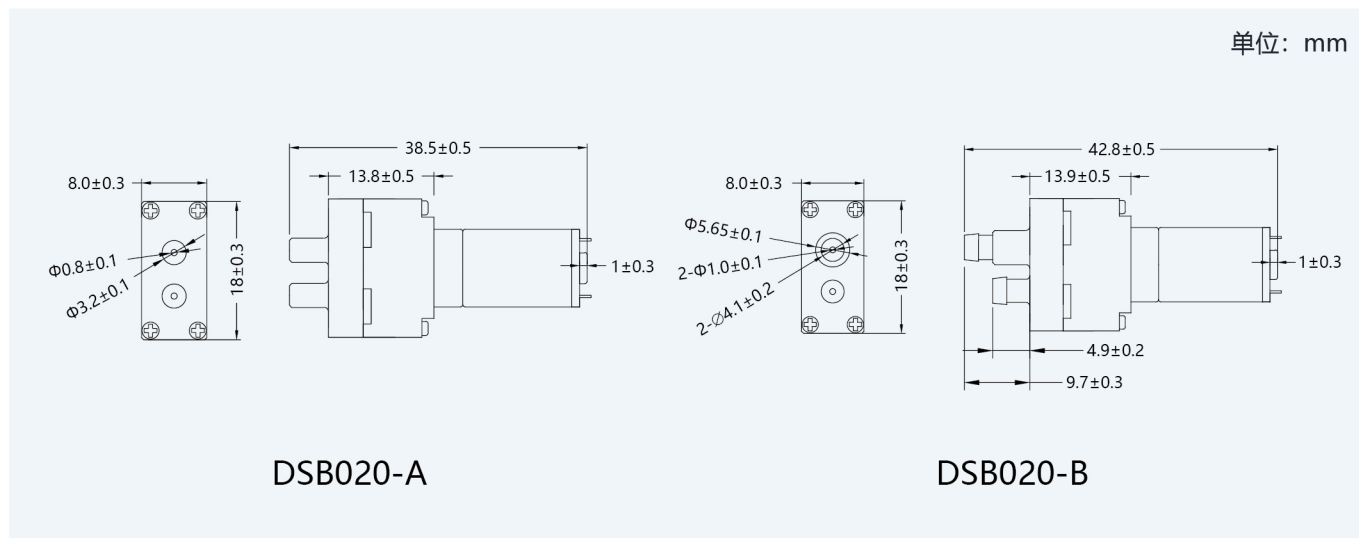
◎ 参数 Technical Specification

		Technical Specification	
产品型号	Product model	DQB380-FB-3	DQB380-FB-3静音款
额定电压	Voltage	DC3.7V	DC3.7V
电流	Current	<450mA	<500mA
充气流量	Air flow rate	>2.0L/Min	
真空压力范围	Maximum vacuum pressure	<-450mmHg	
介质	Media	空气 Air	
使用寿命	Life cycle	接500CC容器, 开2秒, 停1秒为一循环, 测试 95, 000 次以上 >95,000cycles (with a 500cc tank, work for 2secs and stop for 1sec as a cycle)	
使用温度范围	Working temperature	5°C ~ 55°C	
产品净重	Product N.W	54g	
噪音	Noise	将气泵之下垫5cm之海绵, 距噪音计30cm之处 <60dB (on a 5cm sponge, 30cm away from noise meter)	将气泵之下垫5cm之海绵, 距噪音计30cm之处 <55dB (on a 5cm sponge, 30cm away from noise meter)



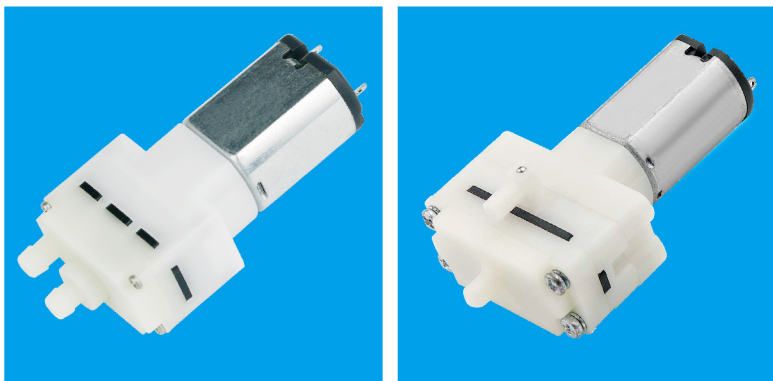
- ◎ 应用 Application
DSB020-A/B:
智能扫地机 Smart sweeping machine
- ◎ 产品特点 Product features
DSB020-B:
止流泵 No over-flow pump

◎ DSB020-A/B 外形图 (DSB020-A/B Dimension drawing)



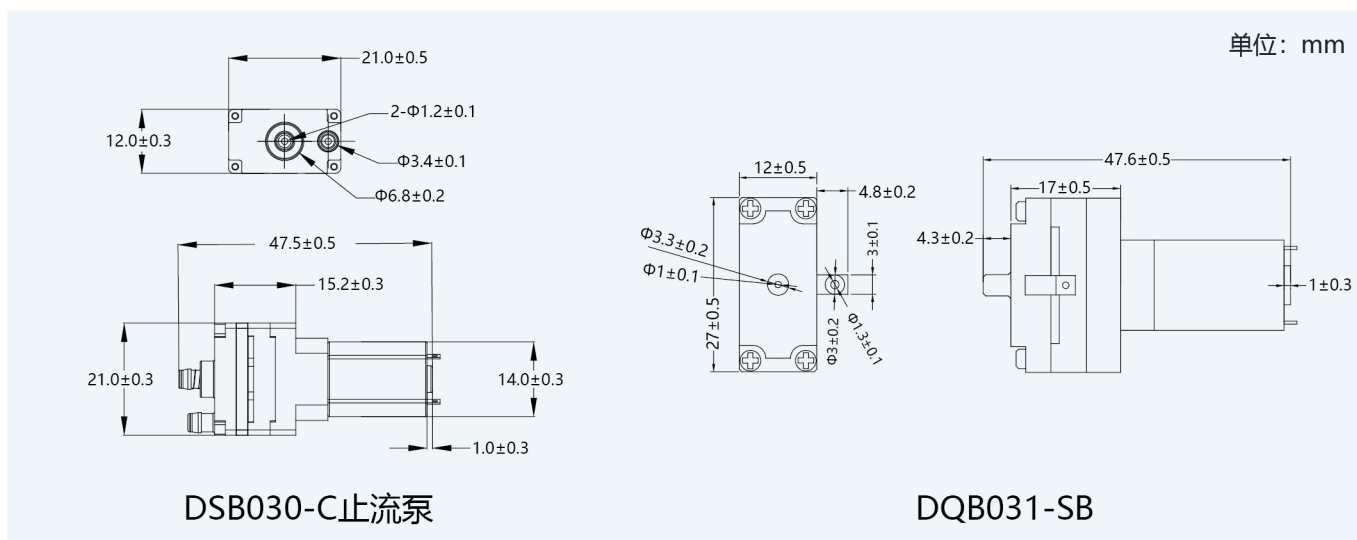
◎ 参数 Technical Specification

Technical Specification			
产品型号	Product model	DSB020-A	DSB020-B
额定电压	Voltage	DC3.0V	
电流	Current	<200mA	<300mA
水流量	Water Flow Rate	>35mL/Min	
介质	Media	水 Water	
使用寿命	Life Cycle	在DC3.0V电压下抽水, 开1秒, 停1秒为一循环, 测试 100,000 以上 >100,000cycles (on DC3.0 voltage pump water, work for 1sec and stop for 1sec as a cycle)	
使用温度范围	Working Temperature	5°C ~ 55°C	
产品净重	Product N.W	6g	
噪音	Noise	将水泵之下垫5cm之海绵, 距噪音计30cm之处 (< 60dB) <60dB (on a 5cm sponge, 30cm away from noise meter)	



- ◎ 应用 Application
DSB030-C / DQB031-SB:
智能扫地机 Smart sweeping machine
- ◎ 产品特点 Product features
DSB030-C:
止流泵 No over-flow pump

◎ DSB030-C / DQB031-SB 外形图 (DSB030-C / DQB031-SB Dimension drawing)



◎ 参数 Technical Specification

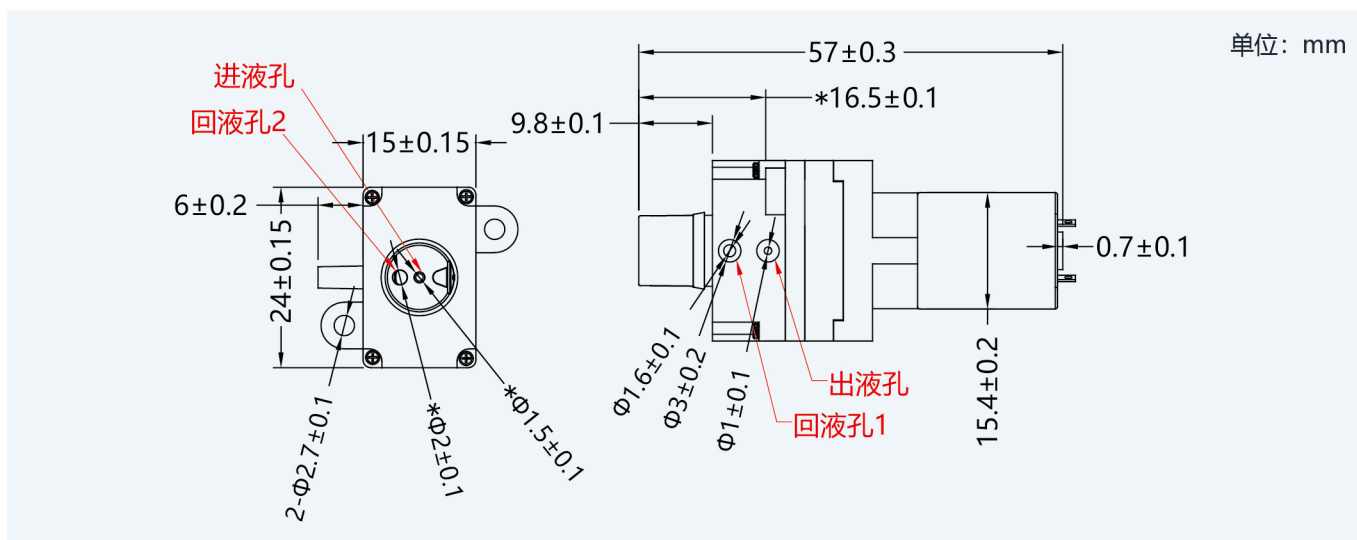
Technical Specification			
产品型号	Product model	DSB030-C	DQB031-SB
额定电压	Voltage	DC5.0V	DC3.0V
电流	Current	<120mA	<250mA
水流量	Water Flow Rate	>35mL/Min	>70mL/Min
介质	Media	空气、水 Air、Water	
使用寿命	Life Cycle	无喷嘴状态下抽水, 开1秒钟, 停1秒钟为一回圈测试 100,000 次以上 >100,000 Cycles (Without nozzle, On DC5.0 voltage pump water, work for 1sec and stop for 1sec as a cycle)	开1秒, 停1秒为一循环, 测试 100,000 以上 >100,000cycles (On DC3.0 voltage pump water, work for 1sec and stop for 1sec as a cycle)
使用温度范围	Working Temperature	5°C ~ 55°C	
产品净重	Product N.W	15g	16g
噪音	Noise	将水泵之下垫5cm之海绵, 距噪音计30cm之处 (< 60dB) <60dB (on a 5cm sponge, 30cm away from noise meter)	



◎ 应用 Application

DSB030-B:
家用香熏机 Home use diffuser

◎ DSB030-B 外形图 (DSB030-B Dimension drawing)



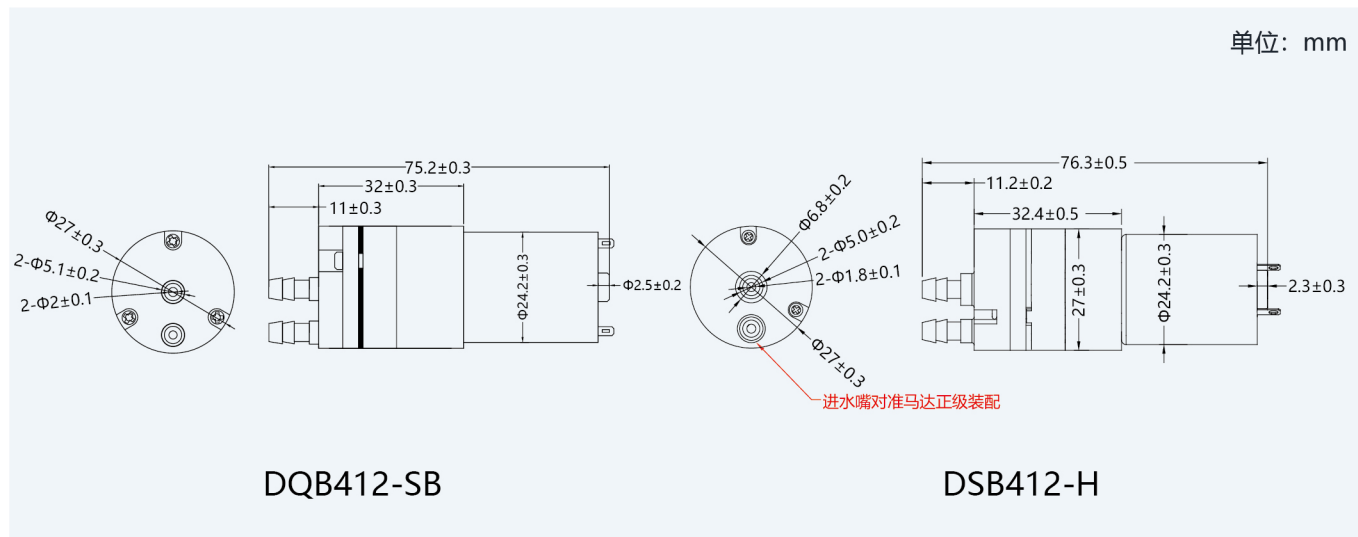
◎ 参数 Technical Specification

Technical Specification		
产品型号	Product model	DSB030-B
额定电压	Voltage	DC2.8V
电流	Current	<150mA
水流量	Water Flow Rate	>30mL/Min
介质	Media	空气、水 Air、Water
使用寿命	Life Cycle	无喷嘴状态下抽水, 开 1 分钟, 停 1 分钟为一回圈测试 300H 以上 >300 Hours (pump water without nozzle, work for 1 Min and stop for 1 Min as a cycle)
使用温度范围	Working Temperature	5°C ~ 55°C
产品净重	Product N.W	19g
噪音	Noise	将水泵之下垫5cm之海绵, 距噪音计30cm之处 (< 60dB) <60dB (on a 5cm sponge, 30cm away from noise meter)



- ◎ 应用 Application
 - DQB412-SB: 咖啡机 Coffee machine
 - DSB412-H: 电动喷水拖把 Electric spray mop
- ◎ 产品特点 Product features
 - DSB412-H: 止流泵 No over-flow pump

◎ DQB412-SB / DSB412-H 外形图 (DQB412-SB / DSB412-H Dimension drawing)



◎ 参数 Technical Specification

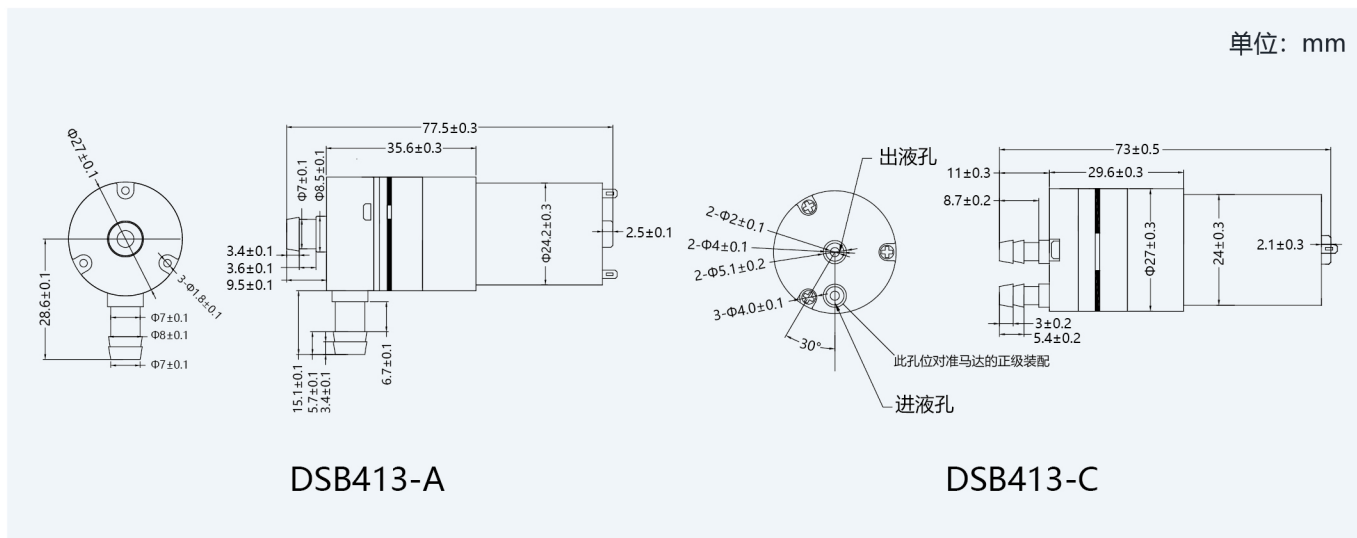
		Technical Specification		
产品型号	Product model	DQB412-SB		DSB412-H
额定电压	Voltage	DC6.0V	DC12.0V	DC12.0V
最大电流	Max Current	<800mA	<450mA	<700mA
流量	Flow Rate	抽水>300mL/Min, 吸气1.0-1.5L/Min		抽水>300mL/Min
介质	Media	空气、水 Air、Water		
使用寿命	Life Cycle	工作2秒,停2秒为一循环测试 100, 000 次以上 >100,000 cycles (work for 2secs and stop for 2secs as a cycle)		
使用温度范围	Working Temperature	5°C ~ 55°C		
产品净重	Product N.W	65g		
噪音	Noise	将水泵之下垫5cm之海绵, 距噪音计30cm之处 (<60dB) <60dB (on a 5cm sponge, 30cm away from noise meter)		



◎ 应用 Application

DSB413-A/C:
咖啡机 Coffee machine
饮水机 Water dispenser
电水壶 Electric water can

◎ DSB413-A/C 外形图 (DSB413-A/C Dimension drawing)



◎ 参数 Technical Specification

Technical Specification					
产品型号	Product model	DSB413-A		DSB413-C	
额定电压	Voltage	DC6.0V	DC12.0V	DC6.0V	DC12.0V
最大电流	Max Current	<900mA	<450mA	<450mA	<350mA
流量	Flow Rate	抽水0.7-1.5L/Min, 吸气1.2-1.5L/Min		抽水0.6-1.0L/Min, 吸气1.0-1.2L/Min	
介质	Media	空气、水 Air、Water			
使用寿命	Life Cycle	工作30秒,停20秒为一循环测试 500小时以上 >500 hours (work for 30secs and stop for 20secs as a cycle)			
使用温度范围	Working Temperature	5°C ~ 55°C			
产品净重	Product N.W	65g		62g	
噪音	Noise	将水泵之下垫5cm之海绵, 距噪音计30cm之处 (< 60dB) <60dB (on a 5cm sponge, 30cm away from noise meter)			



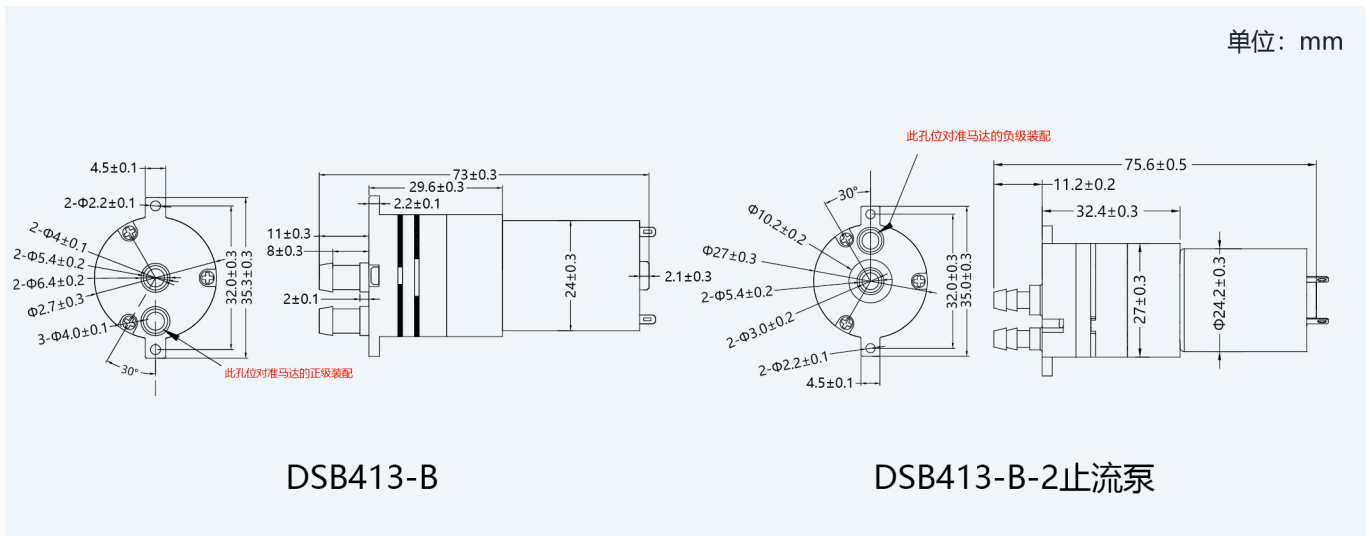
◎ 应用 Application

DSB413-B / DSB413-B-2:
 电动拖把 Electric mop.
 饮水机 Water dispenser
 咖啡机 Coffee machine

◎ 产品特点 Product features

DSB413-B-2:
 止流泵 No over-flow pump

◎ DSB413-B / DSB413-B-2 外形图 (DSB413-B / DSB413-B-2 Dimension drawing)



◎ 参数 Technical Specification

Technical Specification				
产品型号	Product model	DSB413-B		DSB413-B-2
额定电压	Voltage	DC6.0V	DC12.0V	DC12.0V
电流	Current	<800mA	<450mA	<150mA
流量	Flow Rate	抽水0.4-1.3L/Min, 吸气1.0-1.5L/Min		抽水>0.9L/Min
介质	Media	空气、水 Air、Water		
使用寿命	Life Cycle	工作15秒,停15秒为一循环测试 50,000 次以上 >50,000 cycles (work for 15secs and stop for 15secs as a cycle)		
使用温度范围	Working Temperature	5°C ~ 55°C		
产品净重	Product N.W	60g		63g
噪音	Noise	将水泵之下垫5cm之海绵, 距噪音计30cm之处 (< 60dB) <60dB (on a 5cm sponge, 30cm away from noise meter)		



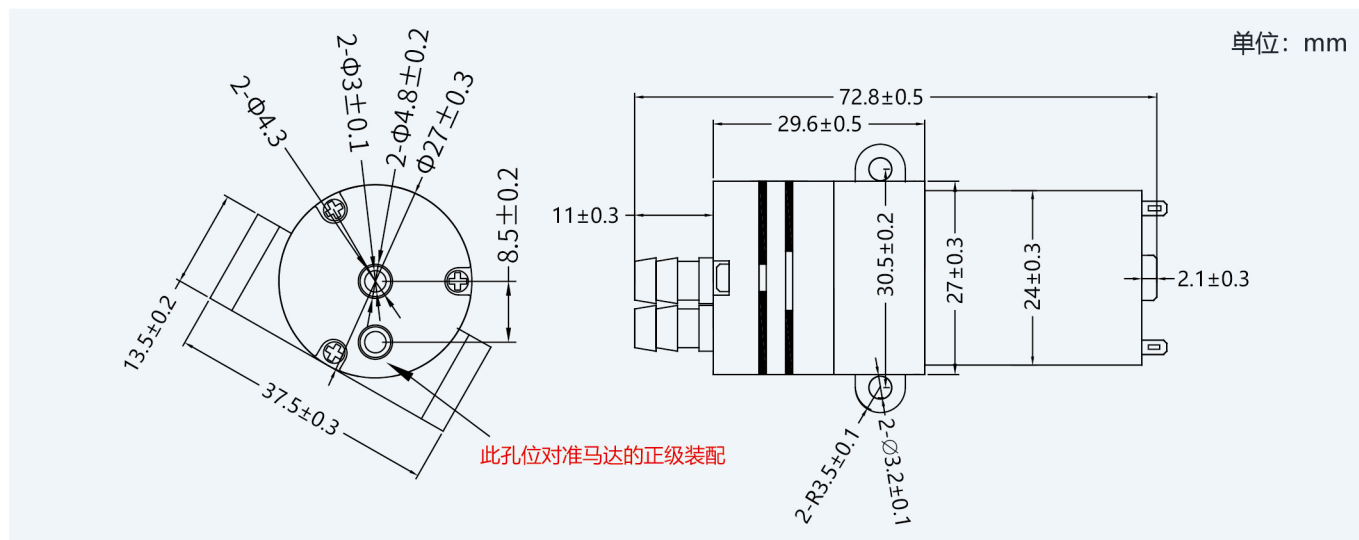
◎ 应用 Application

DSB413-B-1:
饮水机 Water dispenser

◎ 产品特点 Product features

DSB413-B-1:
热水泵 Hot water pump

◎ DSB413-B-1 外形图 (DSB413-B-1 Dimension drawing)



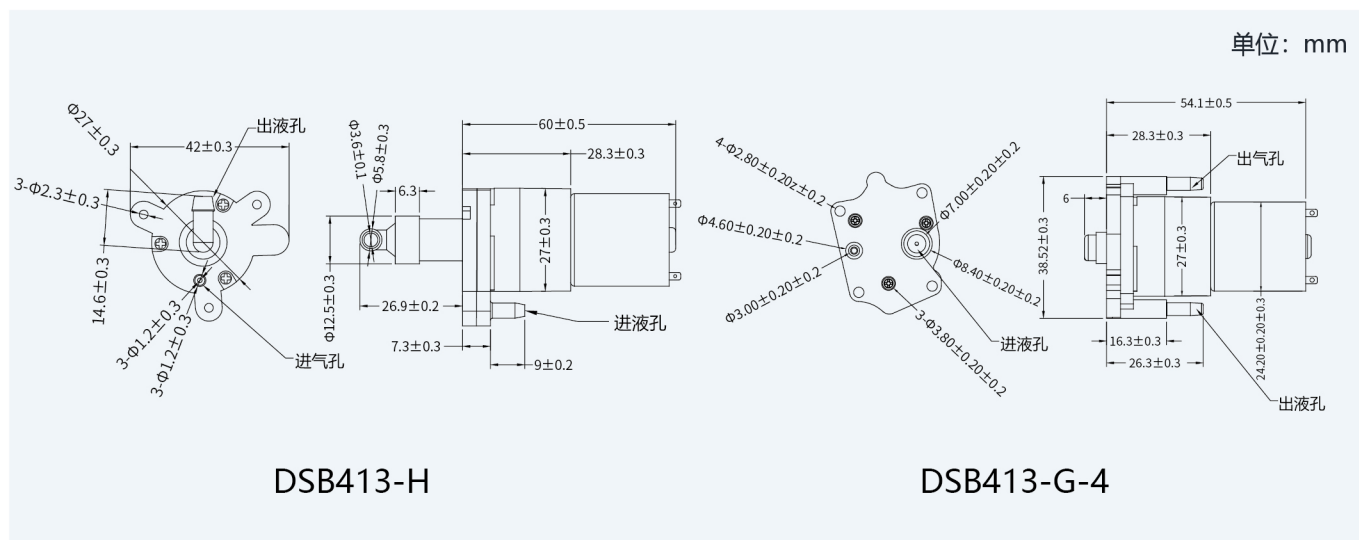
◎ 参数 Technical Specification

Technical Specification		
产品型号	Product model	DSB413-B-1
额定电压	Voltage	DC12.0V
电流	Current	<450mA
流量	Flow Rate	抽水0.4-1.3L/Min, 吸气1.0-1.5L/Min
介质	Media	空气、水 Air、Water
使用寿命	Life Cycle	工作1分钟,停1分钟为一循环测试 20,000 次以上 >20,000 cycles (work for 1min and stop for 1min as a cycle)
使用温度范围	Working Temperature	5°C ~ 95°C
产品净重	Product N.W	62g
噪音	Noise	将水泵之下垫5cm之海绵, 距噪音计30cm之处 (< 60dB) <60dB (on a 5cm sponge, 30cm away from noise meter)



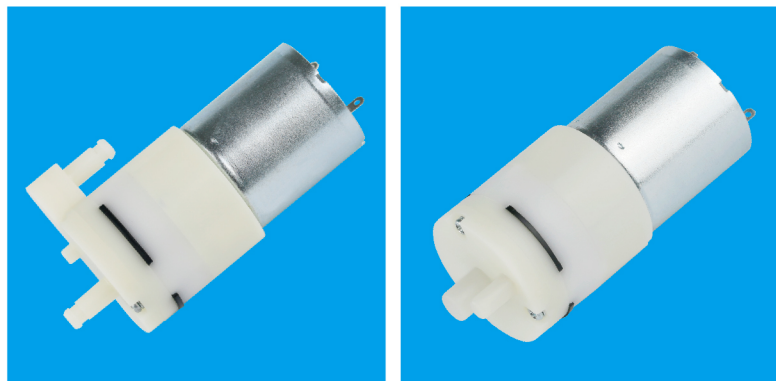
- ◎ 应用 Application
DSB413-H / DSB413-G-4:
自动皂液器 Automatic soap dispenser
- ◎ 产品特点 Product features
DSB413-H:
自带发泡网 It with foam net
DSB413-G-4:
防回流 Stop backflow

◎ DSB413-H / DSB413-G-4 外形图 (DSB413-H / DSB413-G-4 Dimension drawing)



◎ 参数 Technical Specification

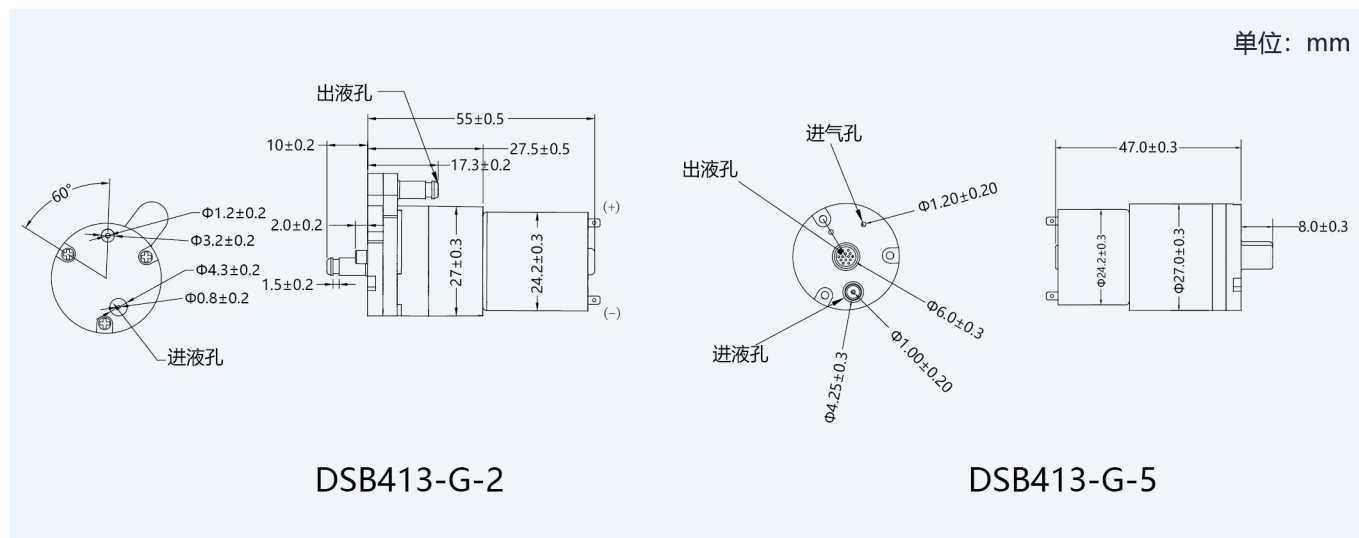
		Technical Specification	
产品型号	Product model	DSB413-H	DSB413-G-4
额定电压	Voltage	DC4.0V	
电流	Current	< 350mA	
充气流量	Air flow rate	> 1.4L/Min	
真空压力范围	Maximum vacuum pressure	< -15Kpa	
气液比	Gas liquid ratio	> 1:12	
介质	Media	空气、水 Air、Water	
使用寿命	Life cycle	开1秒，停1秒为一循环，测试 100, 000 次以上 > 100,000 cycles (work for 1sec and stop for 1sec as a cycle)	
使用温度范围	Working temperature	5°C ~ 55°C	
产品净重	Product N.W	51g	
噪音	Noise	将水泵之下垫5cm之海绵，距噪音计30cm之处 (< 60dB) < 60dB (on a 5cm sponge, 30cm away from noise meter)	



◎ 应用 Application

DSB413-G-2 / DSB413-G-5:
自动皂液器
Automatic soap dispenser

◎ DSB413-G-2 / DSB413-G-5 外形图 (DSB413-G-2 / DSB413-G-5 Dimension drawing)



◎ 参数 Technical Specification

		Technical Specification					
产品型号	Product model	DSB413-G-2			DSB413-G-5		
额定电压	Voltage	DC2.8V	DC4.0V	DC6.0V	DC2.8V	DC4.0V	DC6.0V
电流	Current	<600mA	<350mA	<250mA	<600mA	<350mA	<250mA
充气流量	Air flow rate	>1.4L/Min					
真空压力范围	Maximum vacuum pressure	<-15Kpa					
气液比	Gas liquid ratio	>1:12					
介质	Media	空气、水 Air、Water					
使用寿命	Life cycle	开1秒, 停1秒为一循环, 372马达 100,000 次以上 >100,000cycles (use 372 motor work for 1secand stop for 1sec as a cycle)			开1秒, 停1秒为一循环, 320马达带线和端子 30,000 次以上 >30,000cycles (use 320 motor with wire and connector work for 1sec and stop for 1sec as a cycle)		
使用温度范围	Working temperature	5°C ~ 55°C					
产品净重	Product N.W	49g			37g		
噪音	Noise	将水泵之下垫5cm之海绵, 距噪音计30cm之处 (<60dB) <60dB (on a 5cm sponge, 30cm away from noise meter)					



◎ 应用 Application

DSB413-G-3:

自动酒精消毒机

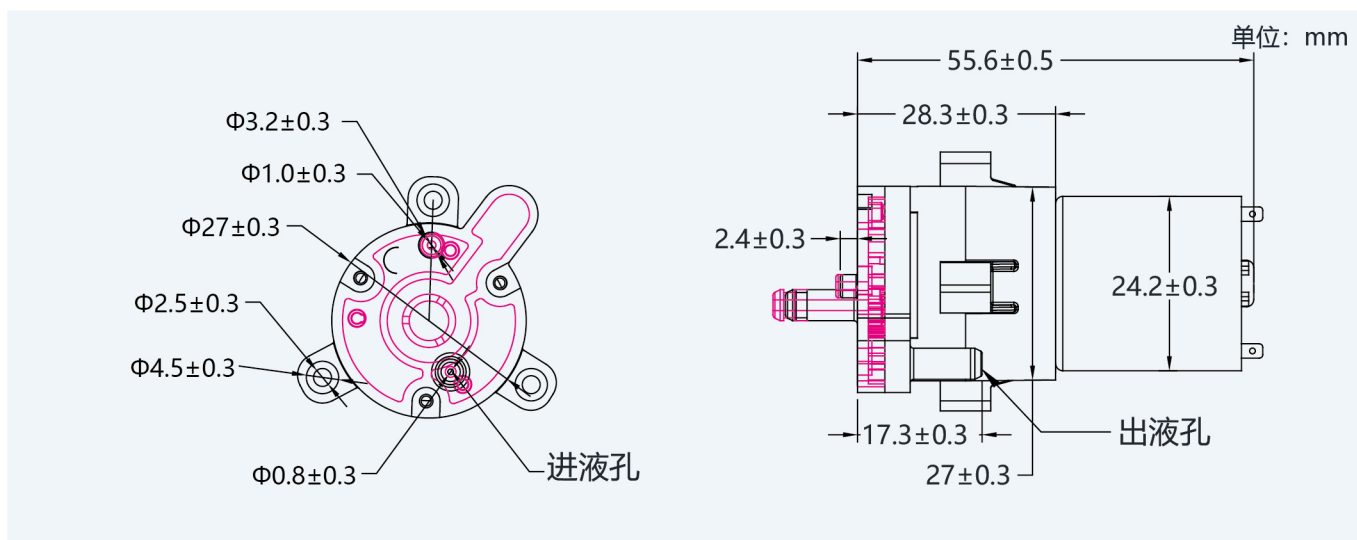
Automatic liquid alcohol sprayer

DSB413-G-7:

自动酒精凝胶消毒机

Automatic alcohol gel disinfectant machine

◎ DSB413-G-3 / DSB413-G-7 外形图 (DSB413-G-3 / DSB413-G-7 Dimension drawing)



◎ 参数 Technical Specification

Technical Specification		
产品型号	Product model	DSB413-G-3 / DSB413-G-7
额定电压	Voltage	DC4.0V
电流	Current	<350mA
充气流量	Air flow rate	>1.2L/Min
真空压力范围	Maximum vacuum pressure	<-25Kpa
介质	Media	空气、酒精 Air、Alcohol
使用寿命	Life cycle	工作1秒,停1秒为一循环测试 100,000 次以上 >100,000 cycles (work for 1secs and stop for 1secs as a cycle)
使用温度范围	Working temperature	5°C ~ 55°C
产品净重	Product N.W	49g
噪音	Noise	将水泵之下垫5cm之海绵, 距噪音计30cm之处 (<60dB) <60dB (on a 5cm sponge, 30cm away from noise meter)



◎ 应用 Application

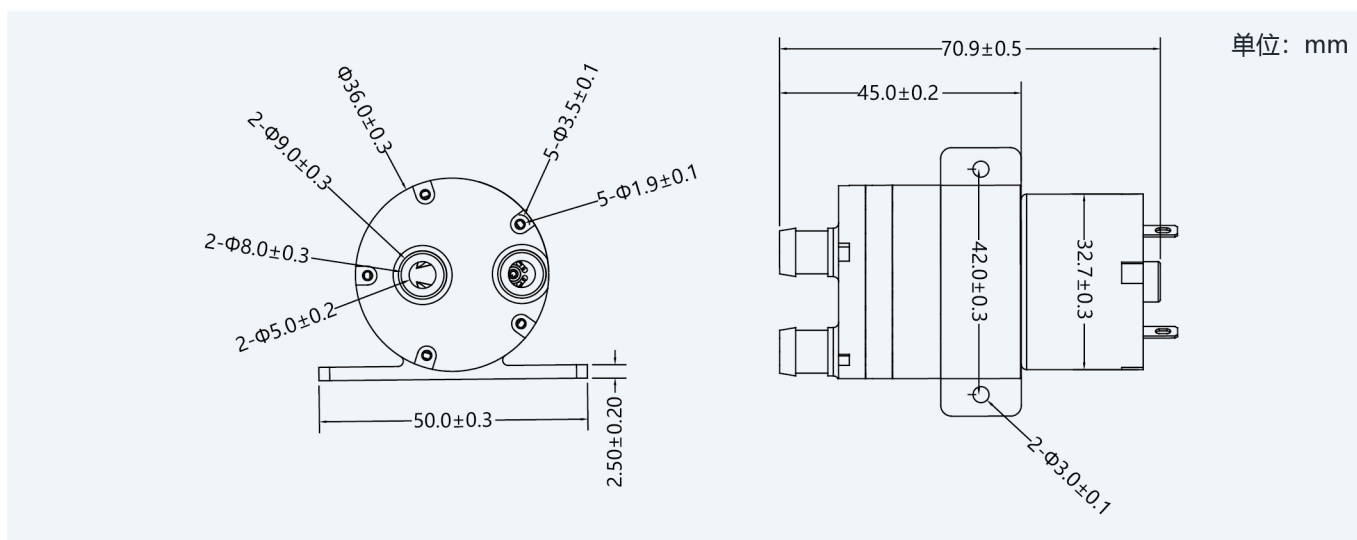
DSB415-A:

饮水机 Water dispenser

咖啡机 Coffee machine

净水器 Water purifier

◎ DSB415-A 外形图 (DSB415-A Dimension drawing)



◎ 参数 Technical Specification

Technical Specification		
产品型号	Product model	DSB415-A
额定电压	Voltage	DC12.0V
电流	Current	<300mA
水流量	Water Flow Rate	2.0-2.5L/Min
介质	Media	水 Water
使用寿命	Life Cycle	工作30秒,停20秒为一循环测试 50,000 次以上 >50,000 cycles (work for 30secs and stop for 20secs as a cycle)
使用温度范围	Working Temperature	5°C ~ 95°C
产品净重	Product N.W	92g
噪音	Noise	将水泵之下垫5cm之海绵, 距噪音计30cm之处 (< 65dB) <65dB (on a 5cm sponge, 30cm away from noise meter)



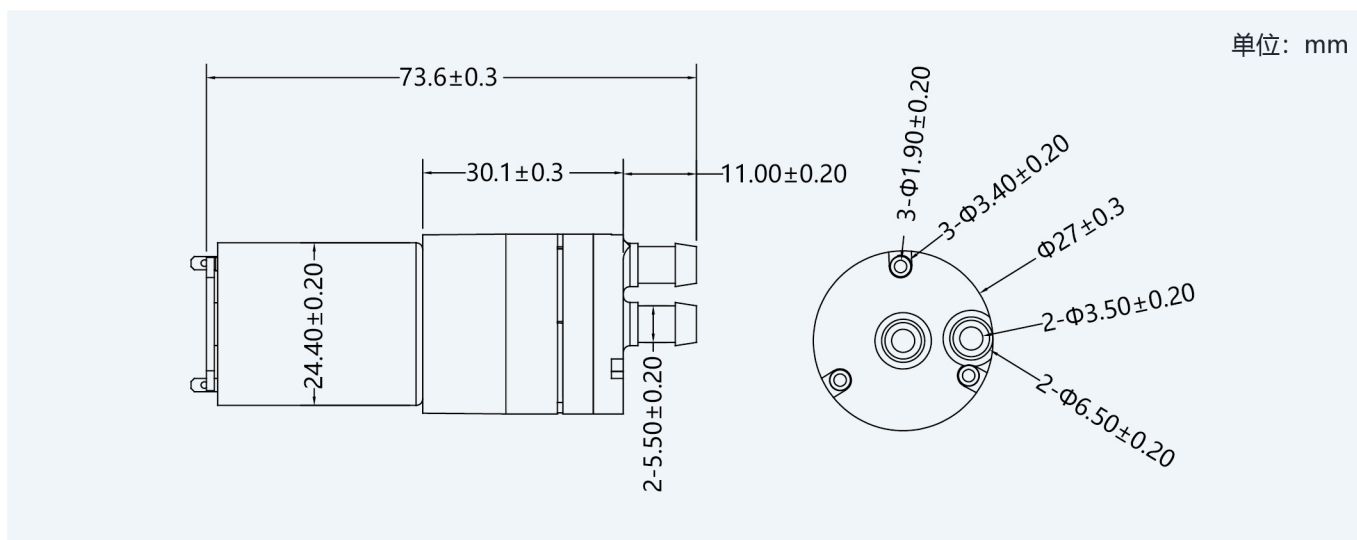
◎ 应用 Application

DSB413-B-3:
咖啡机 Coffee machine
饮水机 Water dispenser

◎ 产品特点 Product features

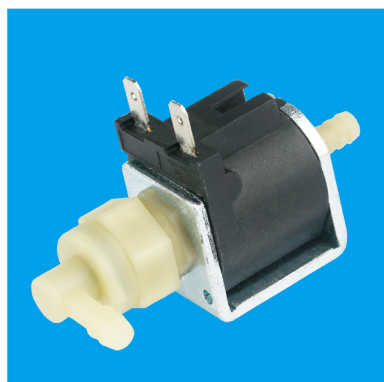
精准控制水流量在±3%之内
Control water flow rate precisely within ±3%

◎ DSB413-B-3 外形图 (DSB413-B-3 Dimension drawing)



◎ 参数 Technical Specification

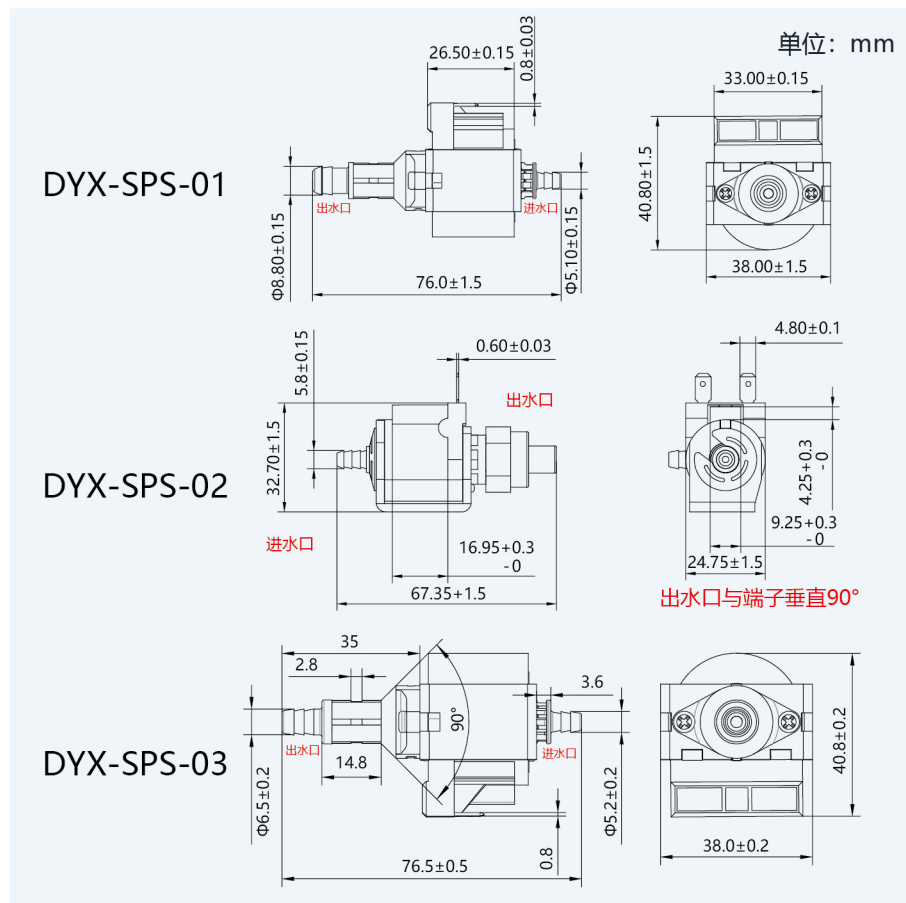
Technical Specification		
产品型号	Product model	DSB413-B-3
额定电压	Voltage	DC12.0V
电流	Current	<150mA
流量	Flow Rate	320-380mL/20s
介质	Media	空气、水 Air、Water
使用寿命	Life Cycle	无喷嘴状态下抽水, 开20秒, 停20秒为一回圈测试 30, 000 次以上 >30,000 cycles (pump water without water, work for 20secs and stop for 20secs as a cycle)
使用温度范围	Working Temperature	5°C ~ 55°C
产品净重	Product N.W	63g
噪音	Noise	将水泵之下垫5cm之海绵, 距噪音计30cm之处 (< 60dB) <60dB (on a 5cm sponge, 3 0cm away from noise meter)



◎ 应用 Application

DYX-SPS-01/02/03:	蒸汽拖把	Electrical steam mop
蒸汽熨斗	Steam iron	蒸汽微波炉
蒸汽清洁机	Steam cleaner	移动空调
挂烫机	Garment steamer	咖啡机
		Coffee machine

◎ DYX-SPS-01/02/03 外形图 (DYX-SPS-01/02/03 Dimension drawing)



◎ 参数 Technical Specification

Technical Specification				
产品型号	Product model	DYX-SPS-01	DYX-SPS-02	DYX-SPS-03
额定电压	Voltage	AC120V 60HZ	AC230V 50HZ	AC230V 50HZ
功率	Power	11-15W	≤15W	≤15W
水流量	Water Flow Rate	在0bar压力下, 485-600g/min 485-600g/min at 0 bar pressure	在0bar压力下, 135-165g/min 135-165g/min at 0 bar pressure	在0bar压力下, 350-450g/min 350-450g/min at 0 bar pressure
压力范围	Pressure	1.2-2.2bar	≥2.5bar	1.2-2.2bar
介质	Media	水 Water		
使用寿命	Life Cycle	开1小时, 停30分钟为一循环, 测试 1000小时以上 > 1000 Hours (work for 1H and stop for 30 mins as a cycle)		
使用温度范围	Working Temperature	5°C ~ 55°C		
产品净重	Product N.W	110g	73g	113g
噪音	Noise	将水泵之下垫5cm之海绵, 距噪音计30cm之处 (< 60dB) < 60dB (on a 5cm sponge, 30cm away from noise meter)		



◎ 应用 Application

DSB130-A:

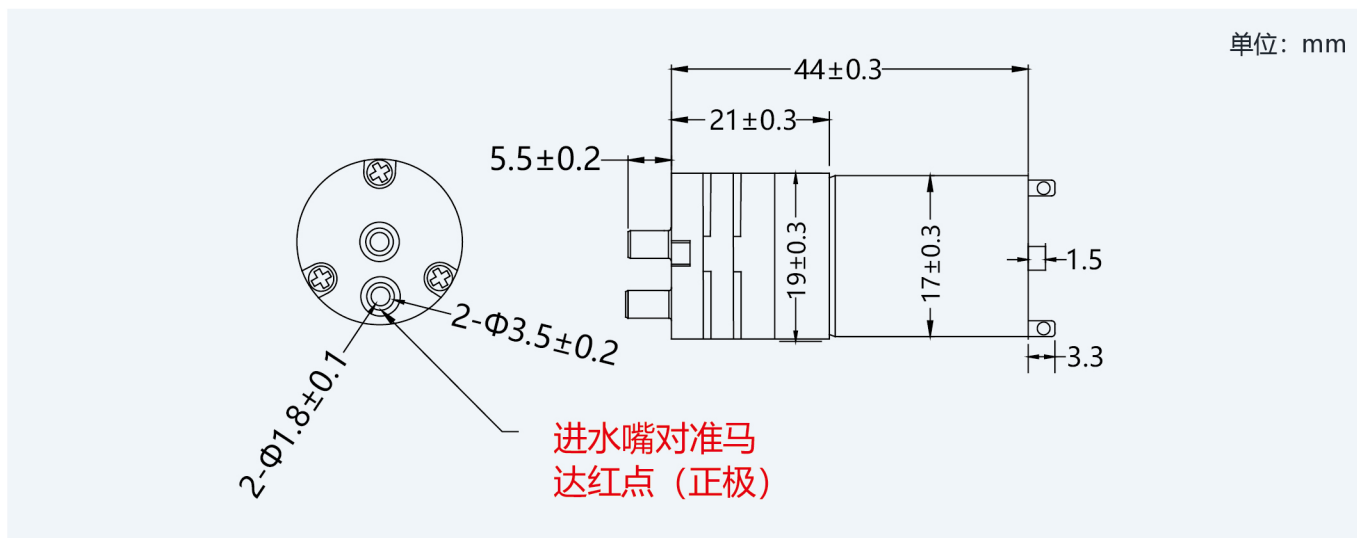
电动吸尘器及喷水拖把一体机

All-in-one electric vacuum cleaner and water spray mop

饮水机

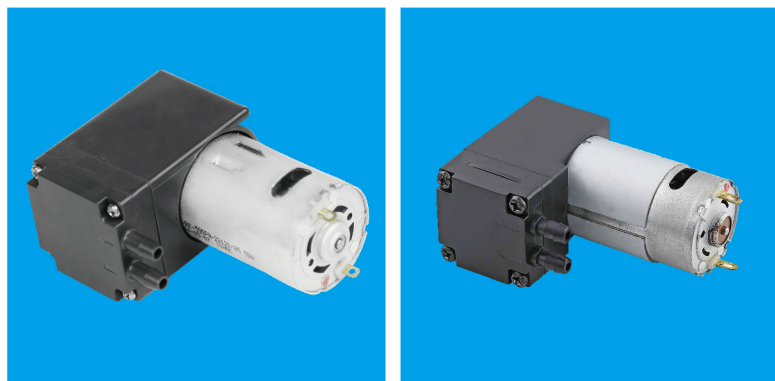
Water dispenser

◎ DSB130-A 外形图 (DSB130-A Dimension drawing)



◎ 参数 Technical Specification

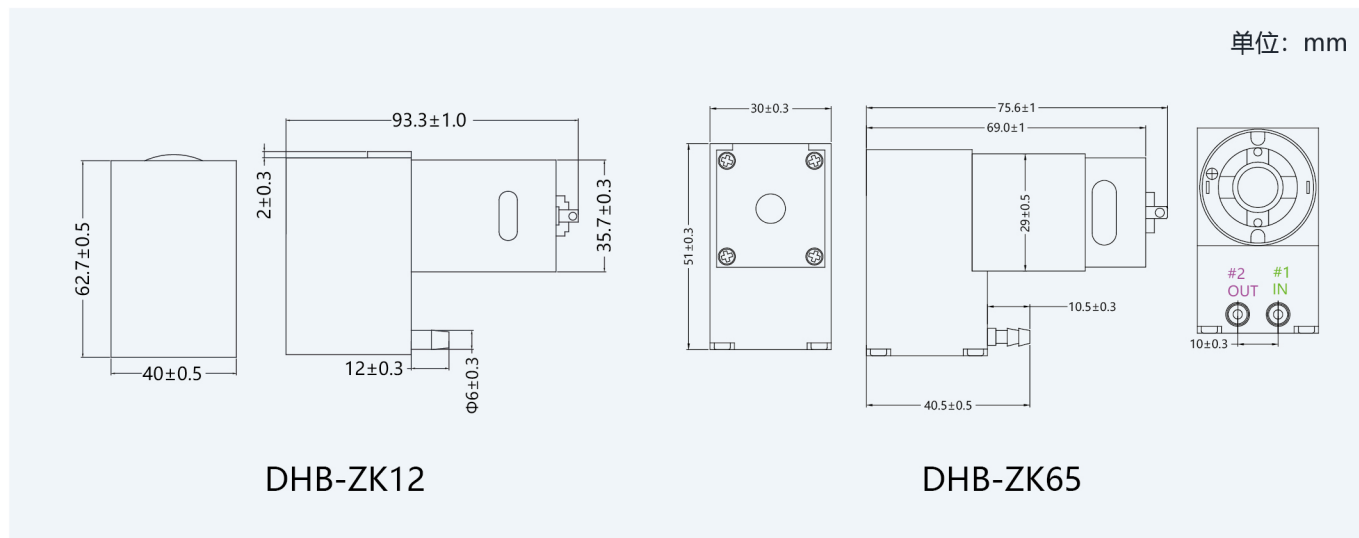
Technical Specification		
产品型号	Product model	DSB130-A
额定电压	Voltage	DC14.8V
电流	Current	< 65mA
水流量	Water Flow Rate	> 300mL / Min
介质	Media	空气、水 Air、Water
使用寿命	Life Cycle	无喷嘴状态下抽水, 开 2秒, 停 2秒为一回圈测试 100, 000 以上 > 100, 000 Cycles (pump water without nozzle, work for 2 secs and stop for 2 secs as a cycle)
使用温度范围	Working Temperature	5°C ~ 55°C
产品净重	Product N.W	23g
噪音	Noise	将泵体之下垫5cm之海绵, 距噪音计30cm之处 (< 60dB) < 60dB (on a 5cm sponge, 30cm away from noise meter)



◎ 应用 Application

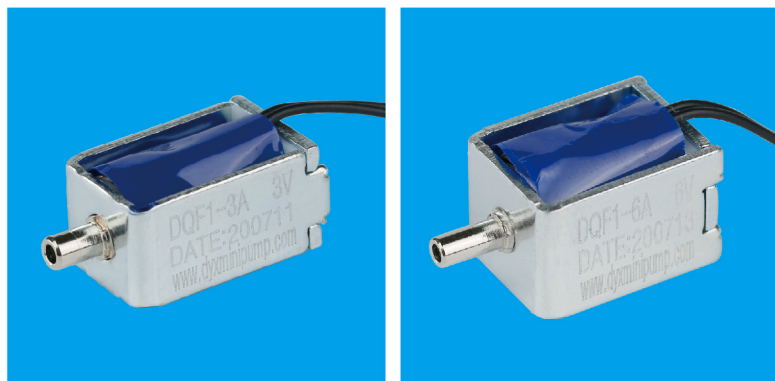
DHB-ZK12 / DHB-ZK65:
按摩器 Massage equipments
真空包装机 Vacuum package machine
真空保鲜盒 Vacuum fresh keeping box
真空破壁机 Vacuum blender

◎ DHB-ZK12 / DHB-ZK65 外形图 (DHB-ZK12 / DHB-ZK65 Dimension drawing)



◎ 参数 Technical Specification

		Technical Specification	
产品型号	Product model	DHB-ZK12	DHB-ZK65
额定电压	Voltage	DC12.0V	
电流	Current	<900mA	
功率	Power	11W	
压力范围	Pressure	<-80Kpa	<-75Kpa
介质	Media	空气 Air	
使用寿命	Life Cycle	指在额定电压及正常温度 (25℃) 条件下连续运转, 寿命800小时, 每次连续工作时间建议不超过3小时 800 hours, suggest continuous operation time less than 3 hours at rated voltage and normal temperature (25 °C)	
使用温度范围	Working Temperature	5℃ ~ 55℃	
产品净重	Product N.W	300g	130g
流量	Flow	13L	7L



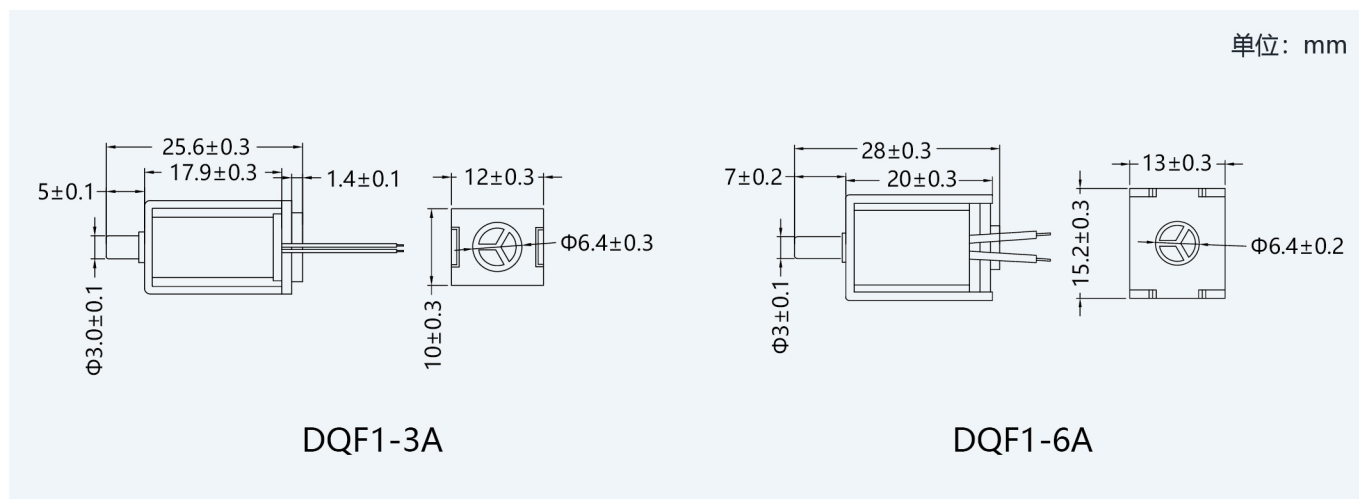
◎ 应用 Application

DQF1-3A/6A:

电子血压计 Mini blood pressure monitor

监护仪 Monitoring instrument

◎ DQF1-3A/6A 外形图 (DQF1-3A/6A Dimension drawing)



◎ 参数 Technical Specification

		Technical Specification	
产品型号	Product model	DQF1-3A	DQF1-6A
额定电压	Voltage	DC3.0V	DC6.0V
电流	Current	<90mA	<60mA
功率	Power	0.3-0.9W	0.4-0.7W
压力范围	Pressure	0-350mmHg	0-350mmHg
密封性	Leakage	接100CC容器, 充气压力从0到280±10mmHg之后停止充气, 安定30秒后测其减少之压力值小于3mmHg/min <3mmHg/min (with a 100cc tank, inflate air from 0 to 280mmHg±10mmHg, then stop for 30 secs)	接500CC容器, 充气压力从0到280±10mmHg之后停止充气, 安定30秒后测其减少之压力值小于3mmHg/min <3mmHg/min (with a 500cc tank, inflate air from 0 to 280mmHg±10mmHg, then stop for 30 secs)
介质	Media	空气 Air	
使用寿命	Life Cycle	接100CC容器, 开10秒, 停5秒为一循环, 测试200, 000 次以上 >200,000cycles (with a 100cc tank, work for 10secs and stop for 5secs as a cycle)	接500CC容器, 开10秒, 停5秒为一循环, 测试200, 000 次以上 >200,000cycles (with a 500cc tank, work for 10secs and stop for 5secs as a cycle)
使用温度范围	Working Temperature	5°C ~ 55°C	
产品净重	Product N.W	13g	17g
泄气速度	Exhaust Speed	在100cc容器中气压从280mmHg压力泄气到15mmHg所需时间 < 3S <3s(with a 100cc tank,exhast air from 280mmHg to 15mmHg)	在500cc容器中气压从280mmHg压力泄气到15mmHg所需时间 < 4S <4s(with a 500cc tank,exhast air from 280mmHg to 15mmHg)
备注	Remark	断电1#&2#相通, 通电1#&2#堵死 Power off 1#&2# connect, power on 1#&2# block	



◎ 应用 Application

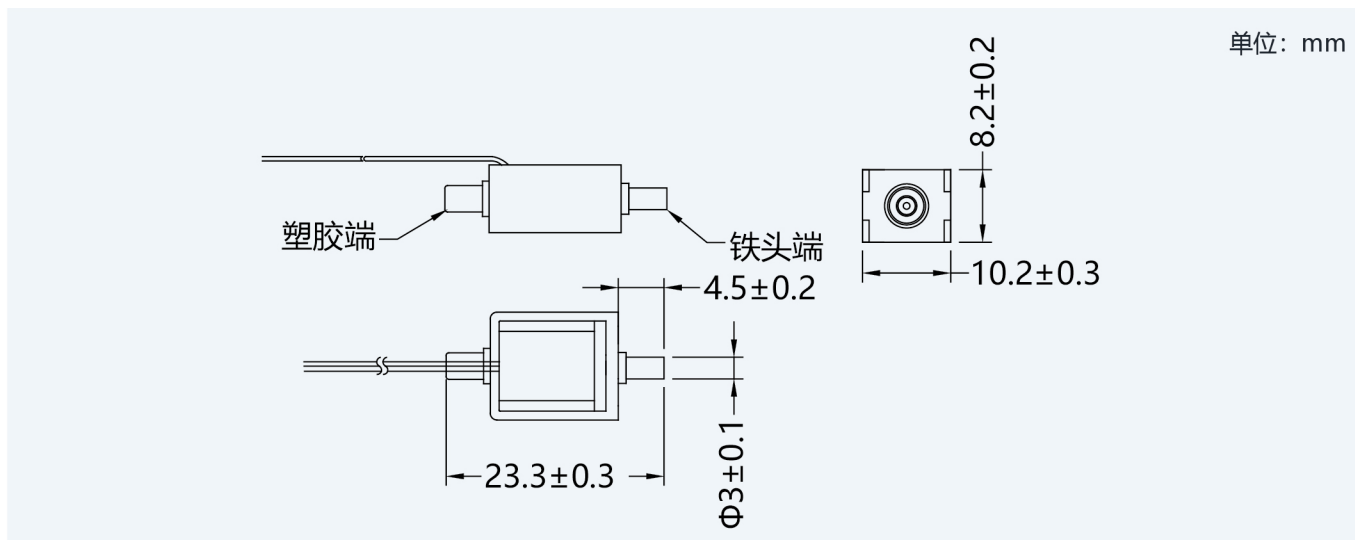
DQF1-3C-1:

负压理疗 Negative pressure physiotherapy

按摩器 Massage equipments

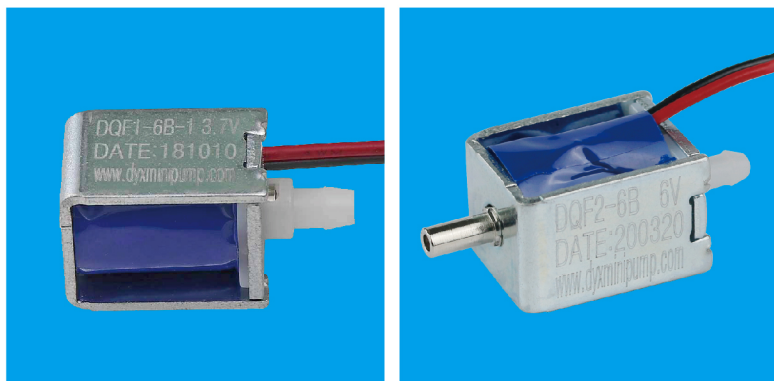
美容护理 Beauty-care equipments

◎ DQF1-3C-1 外形图 (DQF1-3C-1 Dimension drawing)



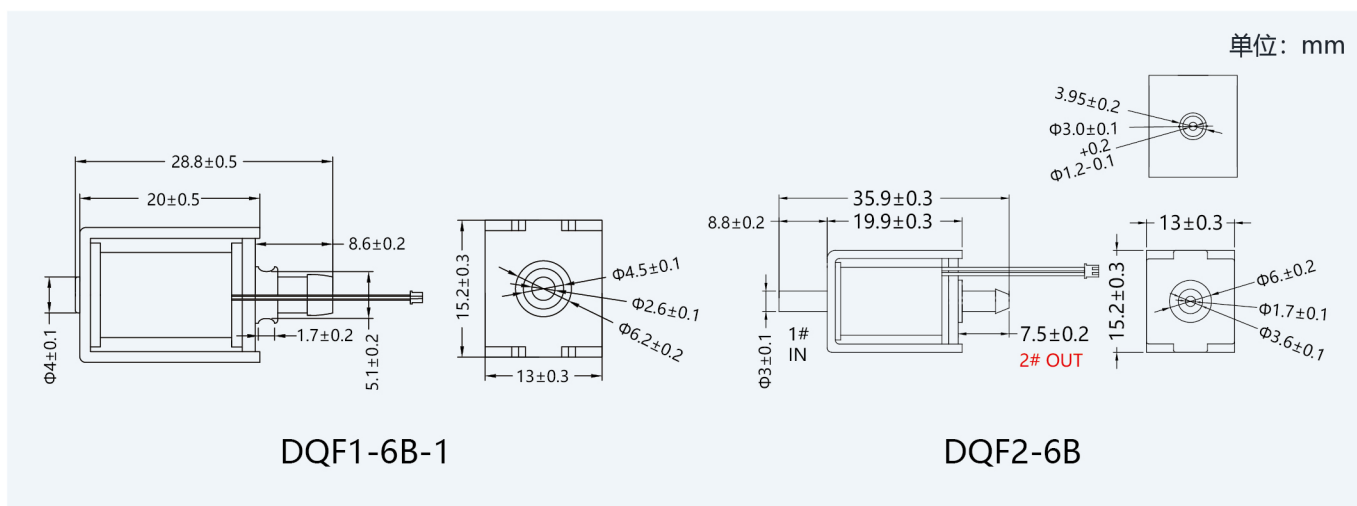
◎ 参数 Technical Specification

Technical Specification		
产品型号	Product model	DQF1-3C-1
额定电压	Voltage	DC3.7V
电流	Current	<350mA
功率	Power	1.04-1.24W
压力范围	Pressure	0-200mmHg
密封性	Leakage	接100CC容器, 充气压力从0到280±10mmHg之后停止充气, 安定30秒后测其减少之压力值小于5mmHg/min <5mmHg/min (with a 100cc tank, inflate air from 0 to 280mmHg±10mmHg, then stop for 30 secs)
介质	Media	空气 Air
使用寿命	Life Cycle	接300CC容器, 开5秒, 停2秒为一循环, 测试 100, 000 次以上 >100,000cycles (with a 300cc tank, work for 5secs and stop for 2secs as a cycle)
使用温度范围	Working Temperature	5°C ~ 55°C
产品净重	Product N.W	69g
泄气速度	Exhaust Speed	在500cc容器中气压从280mmHg压力泄气到15mmHg所需时间 < 6S <6s(with a 500cc tank,exhast air from 280mmHg to 15mmHg)
备注	Remark	断电1#&2#堵死, 通电1#&2#相通 Power off 1#&2# block, power on 1#&2# connect



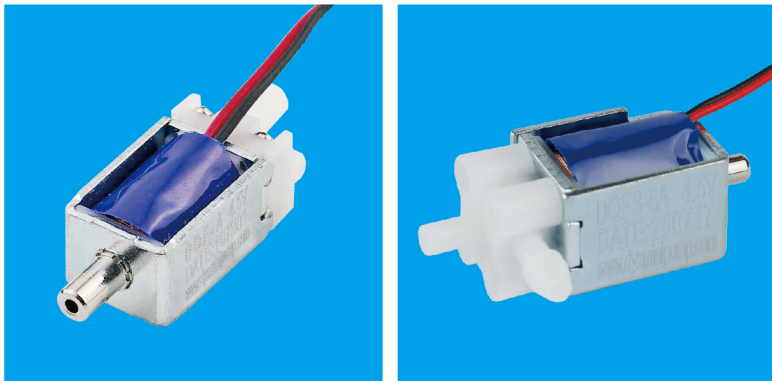
◎ 应用 Application
DQF1-6B-1 / DQF2-6B:
电动吸奶器 Breast pump

◎ DQF1-6B-1 / DQF2-6B 外形图 (DQF1-6B-1 / DQF2-6B Dimension drawing)



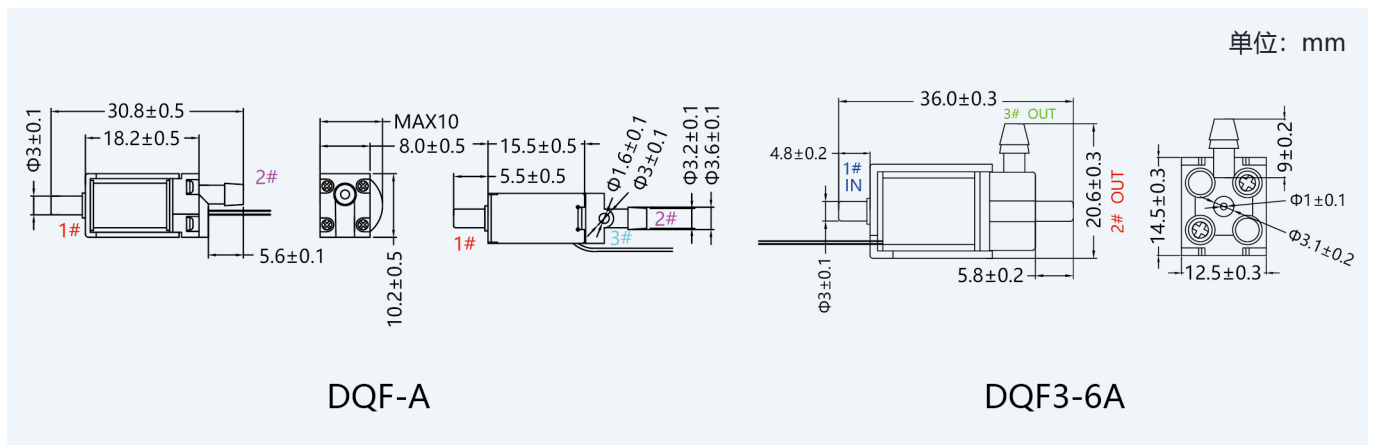
◎ 参数 Technical Specification

		Technical Specification			
产品型号	Product model	DQF1-6B-1			DQF2-6B
额定电压	Voltage	DC3.7V	DC5.0V	DC12.0V	DC3.7V
电流	Current	<800mA	<450mA	<360mA	<220mA
功率	Power	1.9-2.5W			0.82W
压力范围	Pressure	-350mmHg-0			0-300mmHg
密封性	Leakage	接500CC容器，充气压力从0到280±10mmHg之后停止充气，安定30秒后测其减少之压力值小于6mmHg/min <6mmHg/min (with a 500cc tank, inflate air from 0 to 280mmHg±10mmHg, then stop for 30 secs)			接500CC容器，充气压力从0到280±10mmHg之后停止充气，安定30秒后测其减少之压力值小于3mmHg/min <3mmHg/min (with a 500cc tank, inflate air from 0 to 280mmHg±10mmHg, then stop for 30 secs)
介质	Media	空气 Air			
使用寿命	Life Cycle	接500CC容器，开10秒，停5秒为一循环，测试 200, 000 次以上 >200000cycles (with a 500cc tank, work for 10secs and stop for 5secs as a cycle)			
使用温度范围	Working Temperature	5°C ~ 55°C			
产品净重	Product N.W	17g			16g
泄气速度	Exhaust Speed	在500cc容器中气压从-280mmHg压力泄气到15mmHg所需时间 < 3S <3s(with a 100cc tank,exhaust air from -280mmHg to 15mmHg)			在500cc容器中气压从280mmHg压力泄气到15mmHg所需时间 < 4S <4s(with a 500cc tank,exhaust air from 280mmHg to 15mmHg)
备注	Remark	断电2#闭合，通电1#&2#相通 Power off 2# block, power on 1#&2# connect			



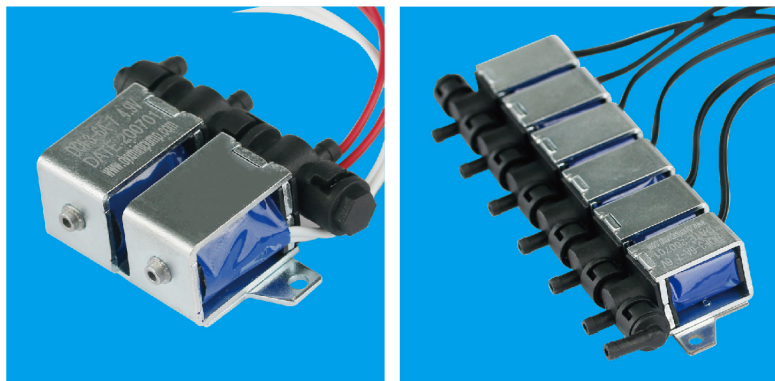
- ◎ 应用 Application
- DQF-A:
眼部按摩器 Eye massager
- DQF3-6A:
按摩器 Massage equipments

◎ DDQF-A / DQF3-6A 外形图 (DQF-A / DQF3-6A Dimension drawing)



◎ 参数 Technical Specification

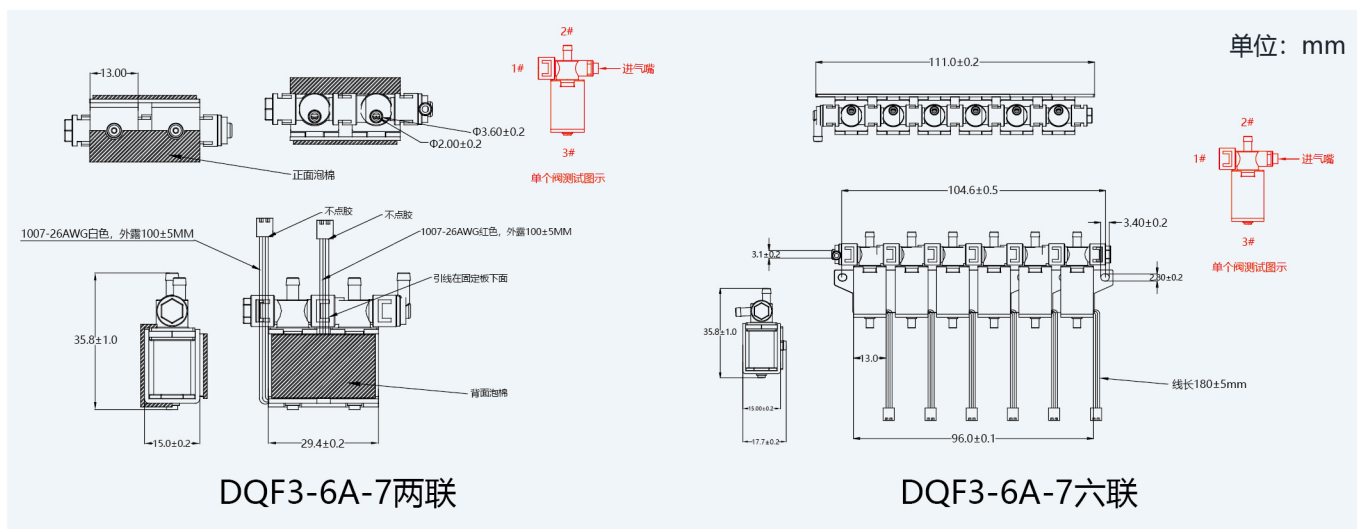
		Technical Specification			
产品型号	Product model	DQF-A		DQF3-6A	
额定电压	Voltage	DC4.5V		DC4.5V	DC6.0V DC9.0V
电流	Current	<300mA		<240mA	<230mA <200mA
功率	Power	1.13W		1-1.8W	
压力范围	Pressure	0-300mmHg		0-350mmHg	
密封性	Leakage	接100CC容器，充气压力从0到280±10mmHg之后停止充气，安定30秒后测其减少之压力值小于15mmHg/min <15mmHg/min (with a 100cc tank, inflate air from 0 to 280mmHg±10mmHg, then stop for 30 secs)		接500CC容器，充气压力从0到280±10mmHg之后停止充气，安定30秒后测其减少之压力值小于15mmHg/min <15mmHg/min (with a 500cc tank, inflate air from 0 to 280mmHg±10mmHg, then stop for 30 secs)	
介质	Media	空气 Air			
使用寿命	Life Cycle	接100CC容器，开10秒，停5秒为一循环，测试200,000次以上 >200,000cycles (with a 100cc tank, work for 10secs and stop for 5secs as a cycle)		接500CC容器，开10秒，停5秒为一循环，测试200,000次以上 >200,000cycles (with a 500cc tank, work for 10secs and stop for 5secs as a cycle)	
使用温度范围	Working Temperature	5°C ~ 55°C			
产品净重	Product N.W	13g		17g	
泄气速度	Exhaust Speed	在100cc容器中气压从280mmHg压力泄气到15mmHg所需时间 <6S <6s(with a 100cc tank,exhast air from 280mmHg to 15mmHg)		在500cc容器中气压从280mmHg压力泄气到15mmHg所需时间 <6S <6s(with a 500cc tank,exhast air from 280mmHg to 15mmHg)	
备注	Remark	断电1#&2#相通，通电2#和3#相通1#堵死 Power off 1#&2# connect, power on 2#&3# connect 1# block		断电2#堵死1#、3#相通，通电1#堵死2#、3#孔相通 Power off 2# block 1#&3# connect, power on 1# block 2#&3# connect	



◎ 应用 Application

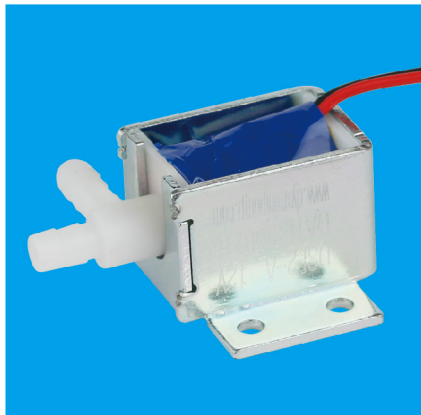
DQF3-6A-7两联/六联:
按摩器 Massage equipments

◎ DQF3-6A-7两联/六联 外形图 (DQF3-6A-7两联/六联 Dimension drawing)



◎ 参数 Technical Specification

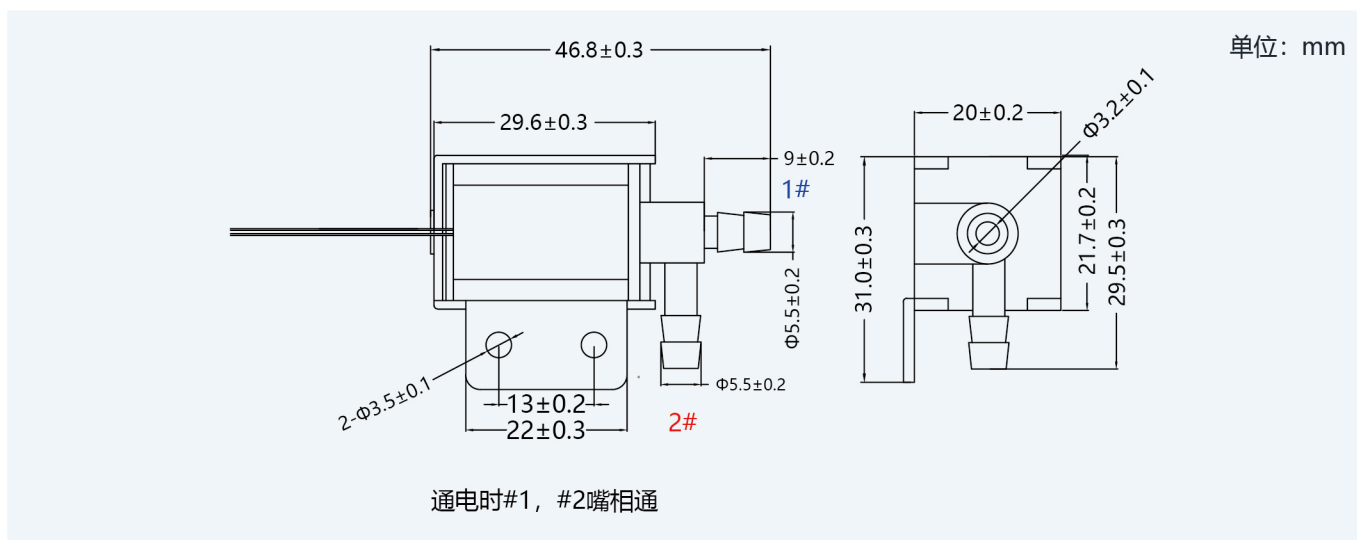
		Technical Specification	
产品型号	Product model	DQF3-6A-7(两联)	DQF3-6A-7(六联)
额定电压	Voltage	DC5.0V	
电流	Current	170±5%mA	178±5%mA
功率	Power	0.85W	0.89W
压力范围	Pressure	0-300mmHg	
密封性	Leakage	接500CC容器, 充气压力从0到300±10mmHg之后停止充气, 安定30秒后测其减少之压力值小于9mmHg/min <9mmHg/min (with a 500cc tank, inflate air from 0 to 300mmHg±10mmHg, then stop for 30 secs)	
介质	Media	空气 Air	
使用寿命	Life Cycle	接500CC容器, 开10秒, 停5秒为一循环, 测试 200, 000 次以上 >200,000cycles (with a 500cc tank, work for 10secs and stop for 5secs as a cycle)	
使用温度范围	Working Temperature	5°C ~ 55°C	
产品净重	Product N.W	40g	120g
泄气速度	Exhaust Speed	在500cc容器中气压从280mmHg压力泄气到15mmHg所需时间 < 6S <6s(with a 500cc tank,exhast air from 280mmHg to 15mmHg)	
备注	Remark	断电2#堵死, 通电2#&3#相通, 每一联均可单独使用, 也可作为整体来使用 Power off 2# block, power on 2#&3# connect. Each valve can be used separately, also can be use as a combine	



◎ 应用 Application

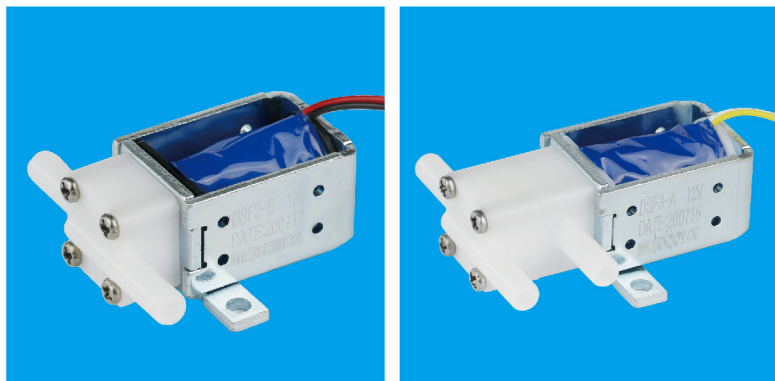
DSF2-A:
咖啡机 Coffee machine
饮水机 Water dispenser

◎ DSF2-A 外形图 (DSF2-A Dimension drawing)



◎ 参数 Technical Specification

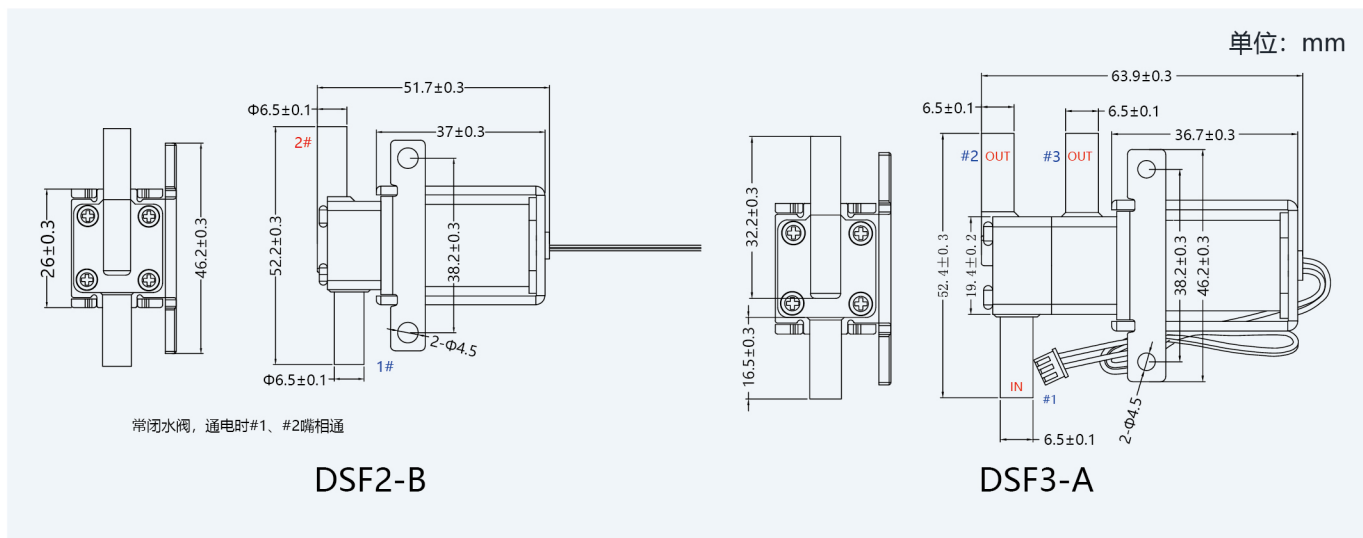
		Technical Specification		
产品型号	Product model	DSF2-A		
额定电压	Voltage	DC6.0V	DC12.0V	DC24.0V
电流	Current	<550mA	<280mA	<150mA
功率	Power	2.4-3.5W		
压力范围	Pressure	0-0.2KPA水压		
密封性	Leakage	产品在工作过程中无漏水现象 Leakage Free		
介质	Media	水 Water		
使用寿命	Life Cycle	通电30秒, 断电20秒 开关50,000次以上 >50,000cycles (work for 30secs,stop for 20secs as acycle)		
使用温度范围	Working Temperature	5°C ~ 55°C		
产品净重	Product N.W	58g		
通水流量	Water Flow	1.0-1.5L/Min		
备注	Remark	断电1#&2#不通, 通电1#&2#相通 Power off 1#&2# block, power on 1#&2# connect		



◎ 应用 Application

DSF2-B / DSF3-A:
咖啡机 Coffee machine
饮水机 Water dispenser

◎ DSF2-B / DSF3-A 外形图 (DSF2-B / DSF3-A Dimension drawing)



◎ 参数 Technical Specification

		Technical Specification					
产品型号	Product model	DSF2-B			DSF3-A		
额定电压	Voltage	DC6.0V	DC12.0V	DC24.0V	DC6.0V	DC12.0V	DC24.0V
电流	Current	<550mA	<320mA	<150mA	<550mA	<320mA	<150mA
功率	Power	2.0-3.5W					
压力范围	Pressure	0-70KPA水压					
密封性	Leakage	产品在工作过程中无漏水现象 Leakage Free					
介质	Media	水 Water					
使用寿命	Life Cycle	通电30秒, 断电20秒 开关50,000次以上 > 50,000cycles (work for 30secs,stop for 20secs as acycle)					
使用温度范围	Working Temperature	5°C ~ 55°C					
产品净重	Product N.W	80g			100g		
通水流量	Water Flow	2.0-3.0L/Min					
备注	Remark	常闭水阀 断电1#&2#堵死, 通电1#&2#相通 Power off 1#&2# block, power on 1#&2# connect			断电1#&3#相通, 通电1#&2#相通 Power off 1#&3# connect, power on 1#&2# connect		