



ibuyer.hk

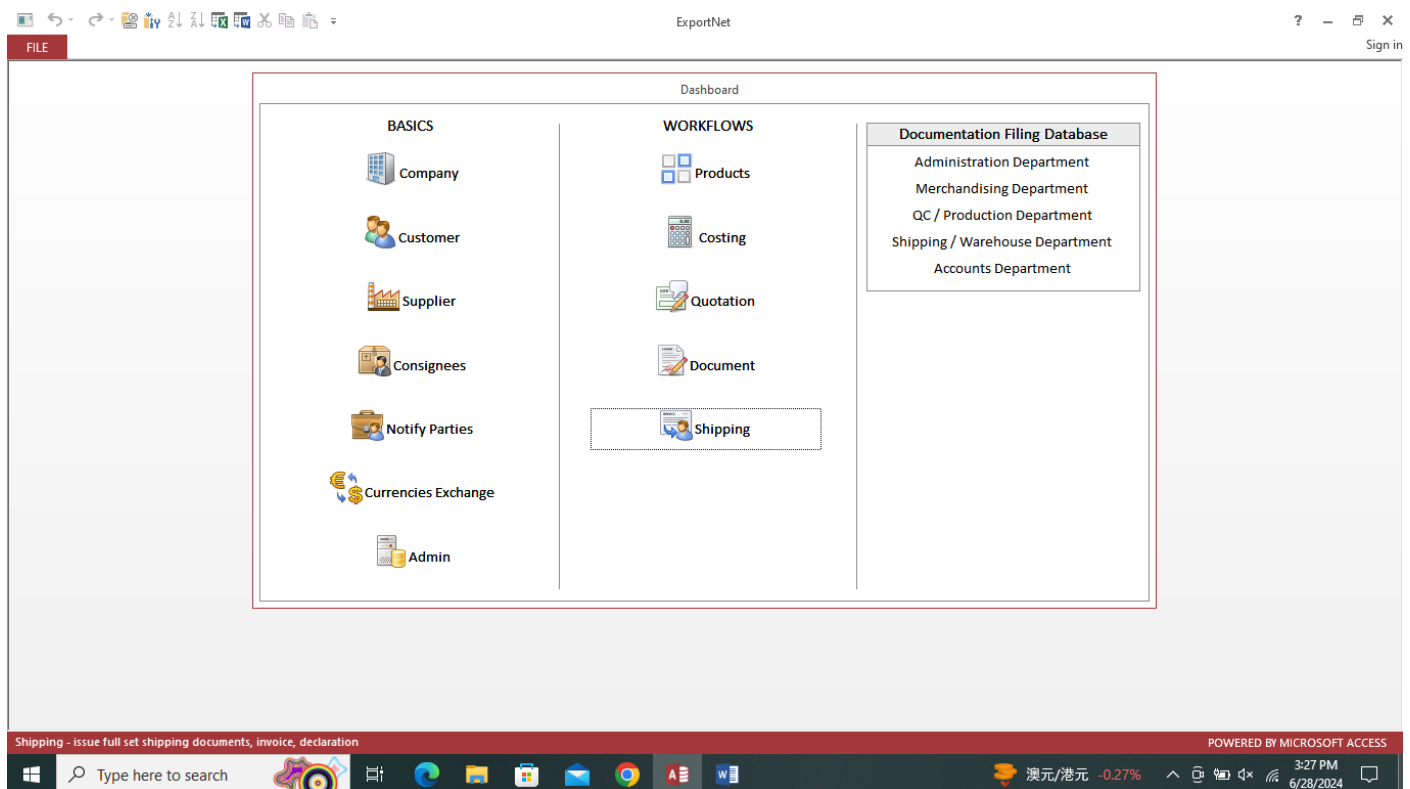


Introducing ExportNet: Your Ultimate Export and Import Documentation Solution

ExportNet is a robust software solution tailored to empower importers, exporters, and trading companies in efficiently managing their buy and sell activities. In the fast-paced world of international trade, keeping track of critical merchandising information such as prices, quotes, product specifications, deliveries, and payments is paramount.

Failure to do so can lead to delayed deliveries, profit losses, or even the risk of losing valuable customers.

Designed with the needs of modern trading companies in mind, ExportNet provides a comprehensive and centralized database software solution to tackle these challenges head-on.





From creating catalogs and cost sheets to generating quotes, trading documents, and full sets of shipping documents, ExportNet streamlines the entire documentation process with ease.

One of ExportNet's standout features is its ability to generate margin comparison reports on both purchases and sales. By identifying the most cost-effective suppliers and the most lucrative customers, ExportNet empowers businesses to significantly increase their profit margins. Additionally, ExportNet offers outstanding shipment reports to ensure timely completion of orders and outstanding payment reports to gauge the credit situation of all customers.

The screenshot displays the 'Products - ExportNet' application window. The interface is divided into several sections:

- Product Information:**
 - ProID No: 96
 - Issue On: 28-Jun-24
 - Article No: car-no
 - Description: 100% plastic toy car set
 - Notes: 7 types of car set package
 - Packaging: individual display box
 - Size Range: 15cm 200:1 model size
 - Project: Xmas 2025 boxing day sale
 - Item Group: toy
 - Brand Name: Tayama
 - M.O.Q.: 1000 per set minimum order
 - Leadtime: 100 days after moulding confirmation
 - Origin + P.O.L: India
 - Trade Terms: F. O. B.
 - Payment Offer: L/C at sight
 - Purchase Cost: INR 650, Unit: set
 - Price Quote: USD 12.5, Supplier: Matel Toys Production (Vietnam) Fac
 - Selling Price: USD 11.5, Company: Giftware Import & Export Trading Ltd
- Image:** A collection of colorful toy cars in their packaging, with the file name 'pexels-pixabay-163696.jpg'.
- Financial Summary:**
 - Purchase Cost in USD: 10.00
 - Selling Price in USD: 11.50
 - Gross Profit Margin %: 13.04%
- Content and Specification:**
 - Content: 65% polyester, 35% nylon, 0.01% painting, 0.03 resin coating
 - Specification: 36" inch x 28" inch out display box, individual packing with instruction, battery not included
- Navigation and Actions:** Buttons for Find, Next, Previous, Add, Duplicate, Save, Delete, More Photos, and List.
- Right Panel:** A menu with options like 'Go To Pro. ID by pull down list', '1. Select Parameter For Filter & Look Up', '2. Product Catalog Print Preview', '3. Cost History & Comparison Reports', '4. select printing option show / hide', '5. Select article no. on below subtable', and '6. Create catalog by above subtable article no'.


Moreover, ExportNet provides a unique quotation analysis report, offering a comprehensive overview of quotes against successful order confirmations. This invaluable insight aids in increasing the success rate of quotes for order confirmation, driving business growth and profitability.



Costing - ExportNet

FILE Costing Find Next Previous Add Duplicate Save Delete List Close

CostID No 148
 Issue On 28-Jun-24
 Article No. car-no
 Description 100% plastic toy car set
 Notes 7 types of car set package
 Item Group toy
 Brand Name Tayama
 Origin + P.O.L India
 Company Giftware Import & Export Trading Ltd
 Supplier Matel Toys Production (Vietnam) Factory
 Internal Remarks converted from article no: car-no ProID: 96 issue on: 28-Jun-24



Trade Terms F. O. B.
 Product Unit set

net cost	INR	650.00
Cost 1:	ie. material import tax, transport, finance charges, rebate	12.31% 80.00
Cost 2:	ie. labor insurance, retirement, overhead, tax rebate	5.38% 35.00
Cost 3:	ie. machine insurance, depreciation, overhead, tax rebate	3.85% 25.00
Cost 4:	ie. wastage, transportation, overhead, tax rebate	18.46% 120.00
Cost 5:	ie. export or import quota cost	10.77% 70.00
Cost 6:	ie. export licenses, documentation, terminal charges, forwarder fees	5.38% 35.00
ex-origi	F. O. B.	1,015.00
Cost 7:	ie. ocean freight cost, demurrage fee	5.91% 60.00
Cost 8:	ie. cargo insurance	2.46% 25.00

Record: 1 of 37 Unfiltered Search

Form View POWERED BY MICROSOFT ACCESS 31°C 大部晴朗 3:13 PM 6/28/2024

In addition to its extensive documentation capabilities, ExportNet seamlessly handles invoicing, customs invoices, shipping orders, packing lists, container tally sheets, Form A applications, Certificates of Origin, country declarations, and beneficiary statements. Its packing modules cater to various packing requirements, including pre-pack, store pack, assorted pack, mixed article, color, and size packing.

Shipping - ExportNet

FILE Shipping Find Next Previous Add Duplicate Save Delete List Close

Shipment No. 104
 Issue Date 28-Jun-24
 Invoice No. INV-00104/24
 Customer Kmart
 Payment Term L/C 60 Days
 Trade Term FOB India
 Brand Label Matell Toys
 Consignee New Distribution Consignee L
 Notify Party 1 notify kuner distribution limit
 Notify Party 2 notify duliter international log
 Forwarders Hapag-Lloyd
 Loading Port Dhaka
 Discharge Port USA Seattle
 Destination U. S. A.
 Company Giftware Import & Export Trad

Booking No book number
 Closing Time closing time
 Vessel voyage pres bill clinton V.12345
 E.T.D anytime departure
 E.T.A anytime arrival
 Loading Type Full Container 40'H
 Total CBM 1.25
 Total Weight 60
 Total Cartons 10
 M.I.D. MID NDWIO-12837
 Remark duplicate of invoice no: INV-00102/24 shipment no: 102 issue date: 28-Jun-24

Bill of Lading BL - 19238
 Cargo Receipt cargo receipt - 98765
 Container No container no - 123456789
 Seal No seal number - seal123456
 L/C No citibank-LC-12345
 L/C Issue Date issue on 10 Sept 2024
 L/C Expiry Date expire on 30 Sept 2024
 L/C Issue Bank Citibank
 Handle By Sales
 Shipping Status Order Proceeding

Go To Shipment No. by pull down list
 1. Shipment Filter & Look Up
 DocID 104
 PO No PO-00114/24
 Article No car-no
 Customer
 Status Deliver & Shipped
 = Result

2. Select Date Range For Reports
 Start Date 1-Jan-2010 End Date 28-Jun-24

3. Sales & Outstanding Payment Reports
 Shipment Analysis By Above Filter
 Beneficiary Statements & Declarations
 Declaration - Azo Free
 Form A / CO / Invoices / Customs Invoices
 Official Invoice

1. select 2. select 3. select & insert

Article No	Description	Notes	Shipped Qty	Curr	Price	Unit
car-no	100% plastic toy car set Pickup Truck	7 types of car set package		100 USD	12.5	set
car-no	100% plastic toy car set Police Car	7 types of car set package		100 USD	12.5	set
car-no	100% plastic toy car set Fire Truck	7 types of car set package		100 USD	12.5	set
car-no	100% plastic toy car set 4 Wheel SUV	7 types of car set package		100 USD	12.5	set
car-no	100% plastic toy car set Private Car	7 types of car set package		100 USD	12.5	set
car-no	100% plastic toy car set Heavy Engine	7 types of car set package		100 USD	12.5	set
car-no	100% plastic toy car set Travel SUV	7 types of car set package		100 USD	12.5	set
*				0 USD	0	set
Total				700		

Record: 1 of 91 No Filter Search

select & insert from document record POWERED BY MICROSOFT ACCESS 32°C 多雲時晴 3:25 PM 6/28/2024



ibuyer.hk

ExportNet's advanced features also include the ability to handle 12 sizes, EAN numbers, barcode numbers, and automatic calculations for CBM, carton numbers, gross weight, net weight, and Nett Net Weight. With an intuitive activity log, ExportNet ensures transparency and accountability by tracking all data additions or modifications, including user, PC, timestamp, and before-and-after change records.

Experience the power and efficiency of ExportNet today and take your export and import documentation processes to new heights of productivity and profitability.

