



# STEEL STRUCTURE

ACT FOR CLIENTS

INTEGRITY IN WORK

EMBRACE COMPETITION

CREATE ROOM TO GROW



Website



Facebook

**HENGON STEEL STRUCTURE LTD**

青岛灵山钢构有限公司

Email

info@hglsgroup.com

Web

www.pebbuildingstructure.com

Address

Southwest corner of the intersection of East Jiaozhou Bay Road and Landong Road, Huangdao District, Qingdao, China



STEEL STRUCTURE BUILDINGS | PREFAB HOUSES | DESIGN | MANUFACTURE

# HENGON

## STEEL STRUCTURE



# CONTENTS

- COMPANY PROFILE
- STEEL STRUCTURE BUILDINGS
- PREFAB HOUSES

# ABOUT US

## COMPANY PROFILE

### WHO WE ARE

Hengon Steel Structure Ltd is located at Huangdao district, Qingdao, Shandong, China. Around 20km away from Qingdao Port. Covering an area of 60,000m<sup>2</sup>, with 150 employees. Certificated with ISO9001, ISO14001, OHSAS18001. Main products are steel structure buildings, like warehouse, workshop, hanger, muti-story buildings, poultry house, container house and expandable house. Direct manufacturer with 15 years of exportation experience to more than 20 countries, including America, South America, Southeast Asia, Africa, etc.





Hengon adhering to experienced design and development team, strict inspection management system, strong production capacity and rich manufacture experience. Its products` quality highly guaranteed by the scientific and advanced technologies. Customized suggestion based on client`s project requirement, in order to fit different country and area`s environment. Hengon can design projects with different wind&live&dead load, and do the structure with GB, ASTM, EU, JIS standard.

## WHY US

# 15

Direct supplier with 15 years exportation, competitive price and satisfied cooperation.

# 100%

100% inspection and delivery on time, professional project consultant and engineer team provide support.

# 20

Projects are widely applied more than 20 countries and regions.

# 48000T

Annual production ability is more than 48,000T.



The Old Factory: **14100m<sup>2</sup>**

Plant 1# **9600m<sup>2</sup>**

Plant 2# **4500m<sup>2</sup>**

- 2** Steel structure production lines
- 1** Prefabricated house production line
- 1** Sandwich panel production line
- 2** Corrugated single sheet production lines

The New Factory: **38594.85m<sup>2</sup>**

Plant 1# **10587.56m<sup>2</sup>**

Plant 2# **20007.29m<sup>2</sup>**

Office & Event Area **8000m<sup>2</sup>**



Do the structure with **GB, ASTM, EU, JIS** standard.

## CERTIFICATION



ISO 14001



ISO 45001



ISO 9001

# STEEL STRUCTURE BUILDINGS

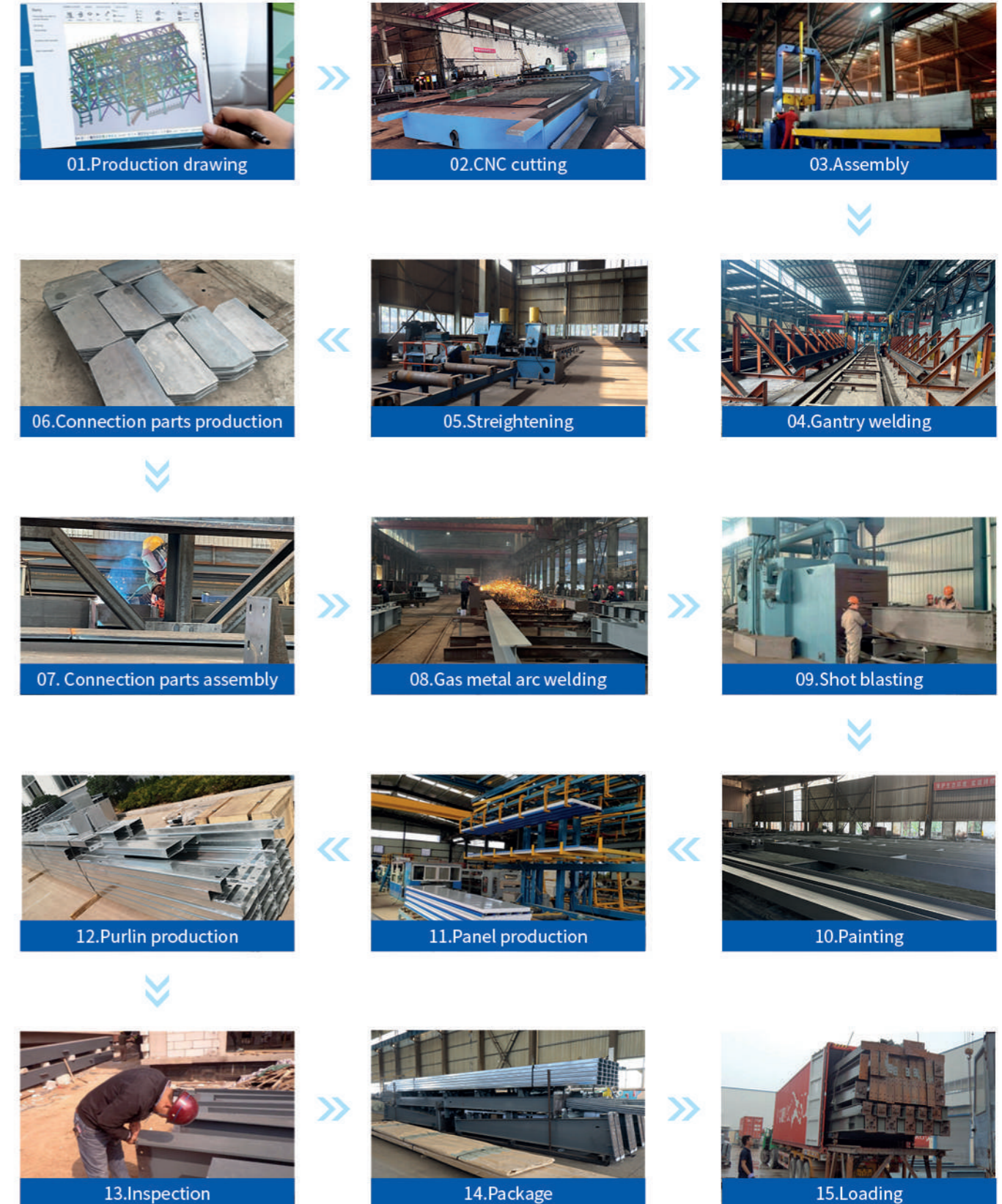


## ADVANTAGES

- Greatly save the construction time, construction is not affected by the seasons.
- Increase residential space usage, and reduce construction waste and pollution.
- Reusing construction materials can drive growth in new building materials industries.
- Good seismic performance, easy to remodel, flexible, convenient, and comfortable.
- High strength, light weight, safe, and cost-effective.
- Aligns with sustainability goals: low carbon, green, eco-friendly, and energy-efficient.

## PRODUCTION PROCESS

Standard Production Progress to ensure high efficient and accurate production.



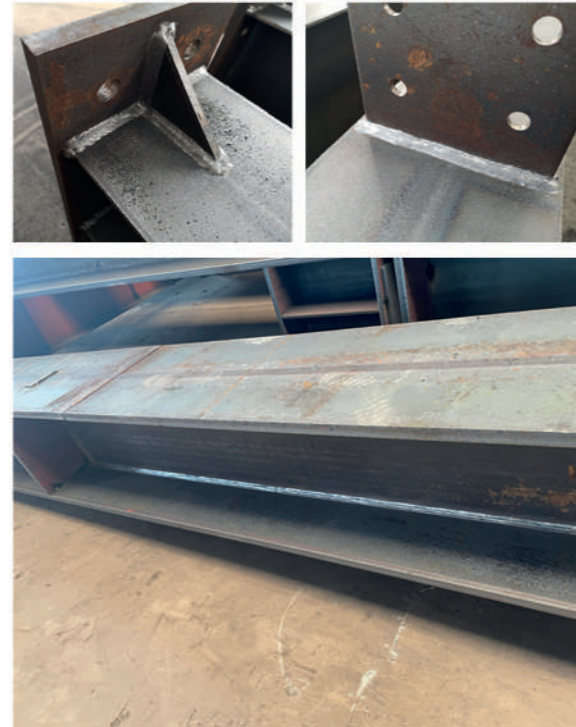
## QUALITY CONTROL



- Strict Quality Management System
- Strong Production Capacity
- Professional Design and Development Team
- Verified Supply Chain
- Rich Manufacture Experience

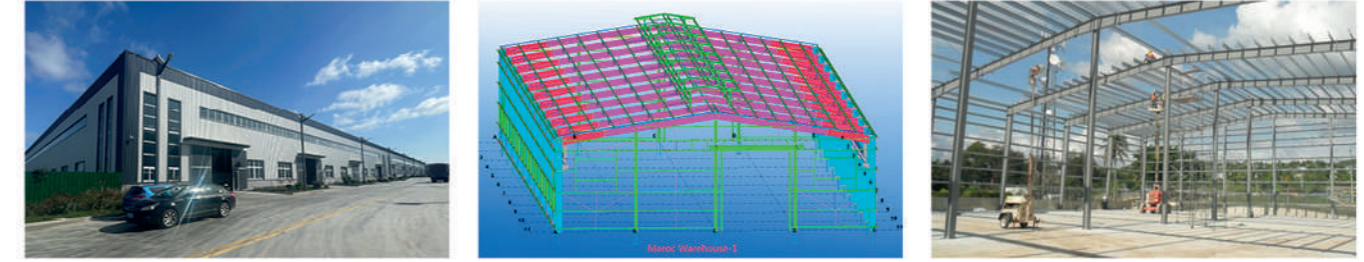
## WELDING WORK

### Smooth Uniform Clean



## APPLICATION

### Warehouse



### Multi-Story Building



### Livestock Shed



## FRAME ANTI-RUST

The anti-corrosion performance of a steel structure mainly depends on the quality of shot blasting and anti-rust treatment applied to its surface.



Shot blasting derusting class Sa 2 1/2, improve paint adhesion, enhance anti-corrosion performance and extend service life.

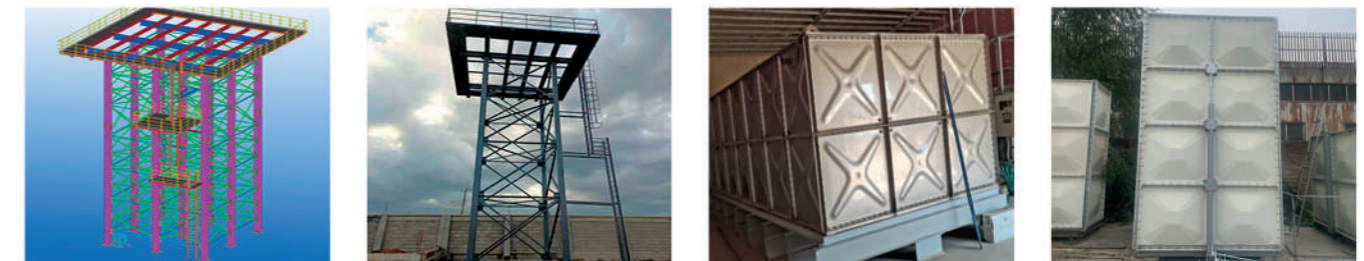


Paint Treatment: 2 layer anti-rust paint & 1 layer surface paint, thickness above 90um. Anti-rust paint can choose: Alkyd, paint, Epoxy zinc-rich paint.



Hot Dipped Galvanized treatment, Zinc coated above 640/m<sup>3</sup>. above 90u.

### Water Tower



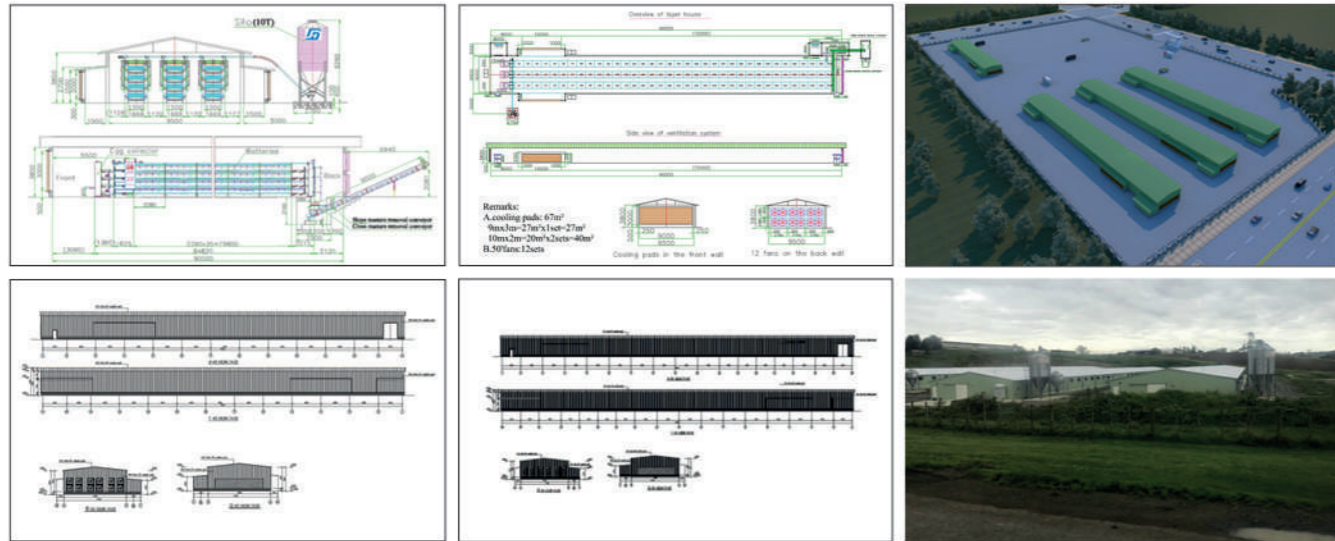
### Gas Station



# PROJECTS

## FIJI-LAYER HOUSE PULLET HOUSE 2019

FIJI Poultry House--350km/h Considering wind resistance design is the client's main concern.					
Country	FIJI	Year	2019		
Project Information					
Project	Layer House Pullet House	Dimension	95mx13mx5m 75mx13mx5m	Wind speed	350km/h
Material	H-steel	Paint	Alykd paint	Purline	C purline C160X50X20X2.5
Roofing and wall	0.4mm+50mm 12kg+0.4mm EPS sandwich panel		Brick height	0.6mm	
Door	Insulation door	Raise equipment	Full equiped	Containers	11x40HQ



Year: 2020 Country: **Senegal** Broilers House 120mx16mxH2.4mx2

Year: 2022 Country: **Philippines** Egg Chicken House 75mx12mxH4.2mx3

Year: 2021 Country: **Bangladesh** Broilers Chicken House 96mx14mxH2.8mx6

Year: 2023 Country: **Kenya** Layer House 113.48mx12.5mxH3.8m

Year: 2024 Country: **Mozambique** Broilers House 106mx14mxH2.5mX2

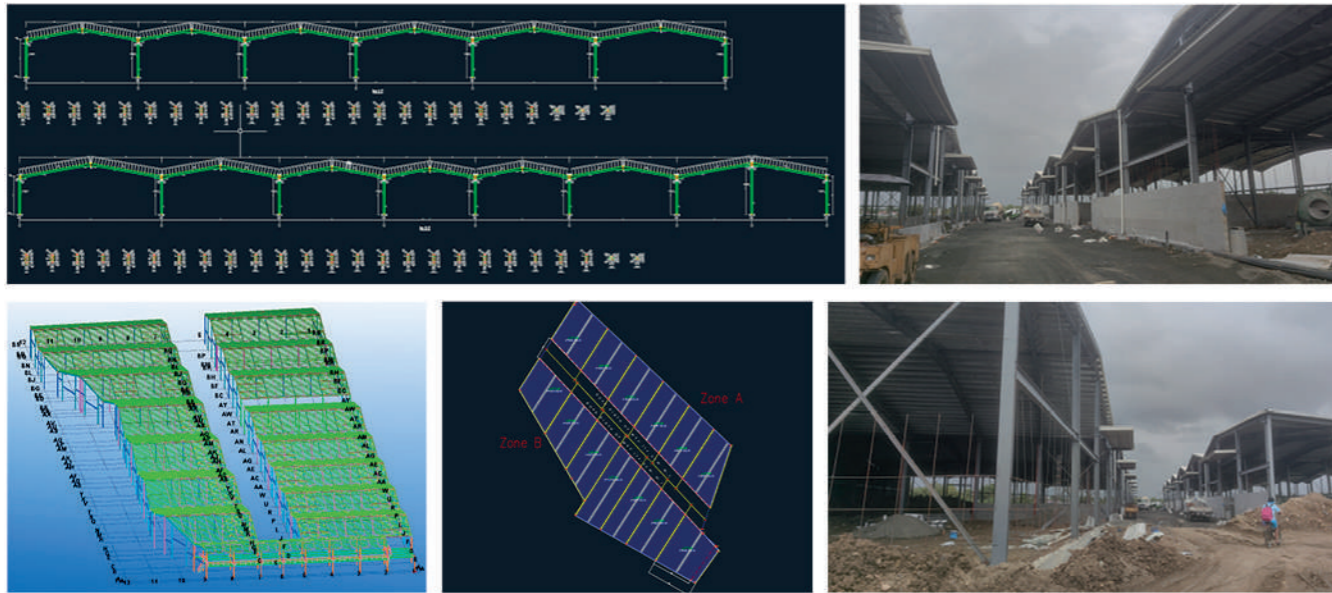
## PHILIPPINES-VILLA STRUCTURE 2023

Philippines three floors villa--Own home should always be the best.					
Country	Philippines	Year	2023		
Project	Villa Structure	Dimension	29.6x12.74x13.9m (Three floors)	Steel Standard	Chinese
Material	H-steel	Paint	Epoxy paint	Purline	C purline
Stair	Included	Elevator shaft	Included	Elevator	Included
Floor	Floor decking plate 1mm	Wall	Client built	Containers	5x40HQ



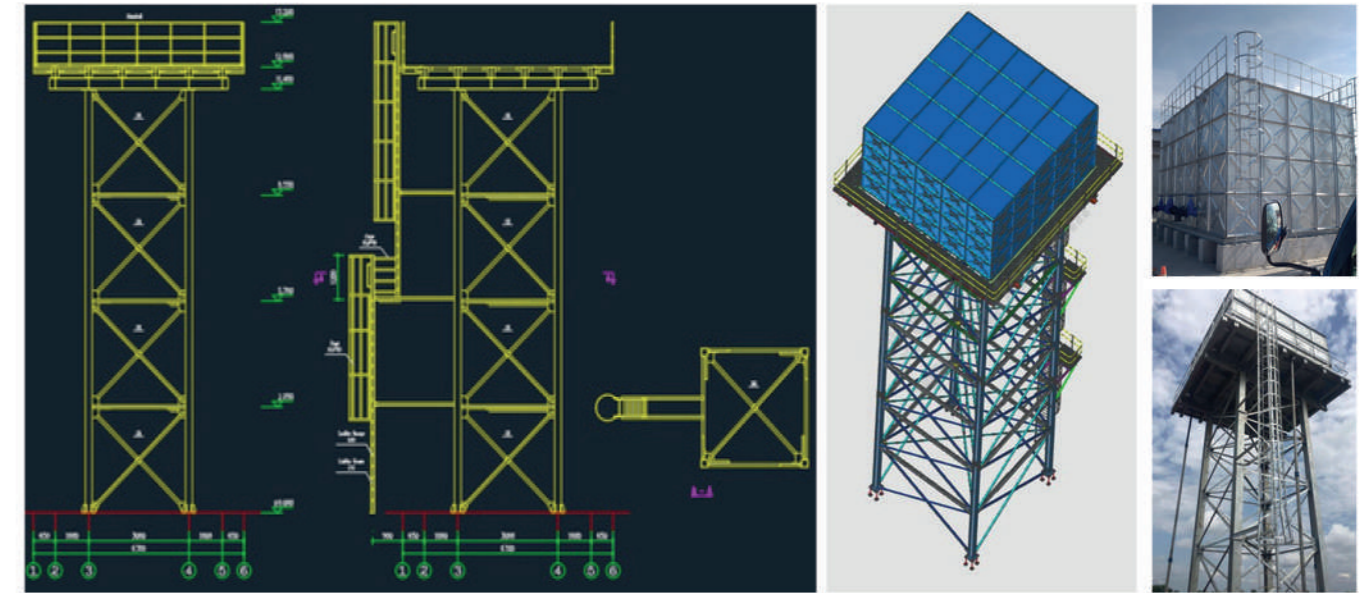
## PHILIPPINES-WAREHOUSE 2023

139mx64mx7.5m Irregular shape warehouse at Iloilo Philippines					
Country	Iloilo Philippines	Year	2023		
Project Information					
Project	Warehouse	Dimension	139mx64mx7.5m	Wind speed	250km/h
Material	H-steel	Paint	Alykd paint, 90u	Purline	C purline C120x50x20x2.0&660
Roofing	Single corrugated sheet V840 0.5mm, EPE foam 12mm with supporting stainless wire			Brick height	Full brick wall
Door	Hot galvanized steel door	Gutter	SS304 1.5mm	Containers	19x40HQ



## KENYA WATER TOWER 2022

Country	Kenya-Mombasa	Year	2021		
Project Information					
Project	Water Tank Tower	Dimension	6.3x6.3x12m	Wind speed	120km/h
Material	H-steel	Paint	Alykd paint	Containers	Loaded with other projects



Year: 2020 Country: **USA** 2 Story Warehouse 7500m<sup>2</sup>

Year: 2021 Country: **Maldives** Warehouse 6000m<sup>2</sup>

Year: 2023 Country: **Kenya** Warehouse 5500m<sup>2</sup>

Year: 2023 Country: **Morocco** 2-Story Warehouse 8000m<sup>2</sup>

Year: 2024 Country: **Sri Lanka** Warehouse 7800m<sup>2</sup>

Year: 2022 Country: **Zambia** Pharmaceutical Factory 8200m<sup>2</sup>

Year: 2023 Country: **Algeria** Feed Mill Factory 12800m<sup>2</sup>

Year: 2024 Country: **Uruguay** Logistics Warehouse 9800m<sup>2</sup>

Year: 2021 Country: **Uganda** 5.16mx5.16mx10mx10 Tank Size: 3.66mx3.66mxH2.44m

Year: 2021 Country: **Kenya** 6.3mx6.3mx12mx8 Tank Size: 5mx5mxH3m

Year: 2022 Country: **Mozambique** 6.4mx6.4mx20mx2 Tank Size: 5mx5mxH2m

Year: 2022 Country: **Zimbabwe** 9.94mx7.32mxH15 Tank Size: 8.54mx7.32mxH3m

Year: 2023 Country: **Mozambique** 7.51mx6.28mxH18x12 Tank Size: 6.1mx4.88mxH3m

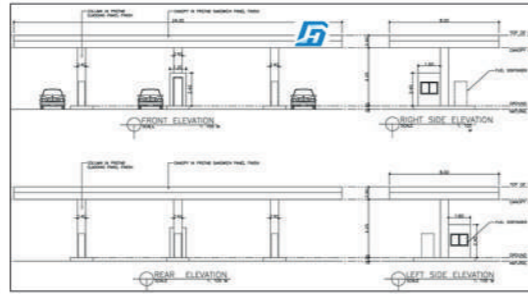
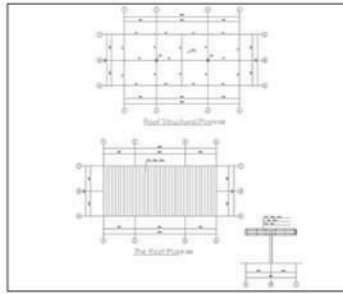
Year: 2024 Country: **Saudi Arabia** 11.4mx6.4mxH5mx7 Tank Size: 5mx10mxH2m

Year: 2024 Country: **Qatar** 6.4mx6.4mxH8mx6 Tank Size: 5mx5mxH2m

Year: 2024 Country: **Uganda** 6.4mx6.4mx15mx20 Tank Size: 5mx5mxH2m

# ZAMBIA-GAS STATION 2024

Country	Zambia		Year	2022	
Project Information					
Project	Prefab Gas Station	Dimension	W8mxL20mx5m	Wind speed	Normal wind speed
Material	Square tube	Paint	Anti-rust paint	Purline	Square Tube
Roofing	PPGI steel sheet, 0.4mm thickness			Ceiling	PPGI steel sheet, 0.5mm thickness
Gutter	Stainless steel Gutter			Containers	1x40HC



# PREFAB HOUSES



## ADVANTAGES

1. Economical
2. Seismic Performance
3. Waterproof Performance
4. Fireproof Performance
5. Thermal Insulation
6. Sound Insulation Performance

## APPLICATION

- Construction Site Worker Room
- School Dormitory
- Mobile Office
- Resort Hotel
- Living House
- Restaurant
- Store
- Cafe

Year: 2020 Country: **Zambia** 9mx22mxH6mx5

Year: 2021 Country: **Angola** 16mx7mxH5.4mx6

Year: 2023 Country: **USA** 7.5mx4.55mxH2.6mx8

Year: 2023 Country: **Philippine** 15mx6mxH5.5mx5

Year: 2024 Country: **Thailand** 14mx5mxH5.3mx4



## CONTAINER HOUSE



Flat Pack Container House-20ft

Size: 2.46mx5.9mxH2.8m 14.5m<sup>2</sup>  
One 40HQ container can load 8 units



Flat Pack Container House-40ft

Size: 2.46mx11.8mxH2.8m 29m<sup>2</sup>  
One 40HQ container can load 3 units



Detachable Container House-20ft

Size: 3mx6mx2.896m 18m<sup>2</sup>  
One 40HQ container can load 15 units

## EXPANDABLE HOUSE



Expandable House-20ft

Size: 6.47mx5.9mxH2.54m 38m<sup>2</sup>  
One 40HQ container can load 2 units



Expandable House-40ft

Size: 6.47mx11.8mxH2.54m 76m<sup>2</sup>  
One 40HQ container can load 1 unit

## APPLE&CAPSULE HOUSE



Apple&Capsule House-20ft

Size: 5.8mx3mxH2.45m 13m<sup>2</sup>  
One 40HQ container can load 2 units



Apple&Capsule House-20ft

Size: 11.5mx3mxH2.45m 26.5m<sup>2</sup>  
One 40HQ container can load 1 unit

## SPACE HOUSE



Space House 01

Size: 8.5mx3.3mxH3.3m 28.4m<sup>2</sup>  
Loaded by FR container



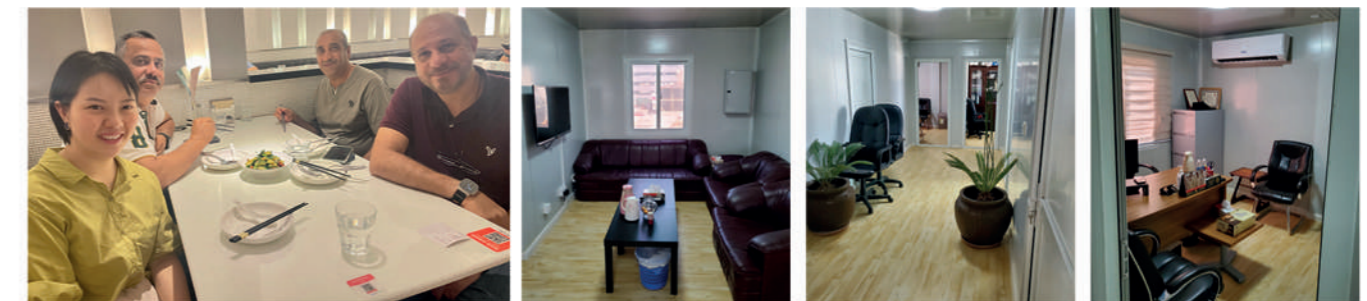
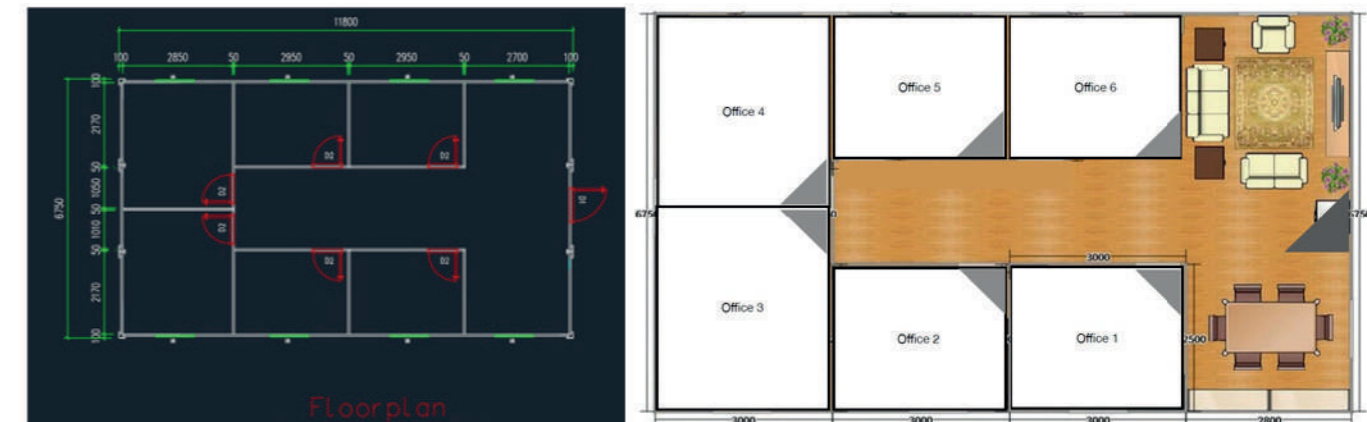
Space House 01

Size: 11.5mx3.3mxH3.3m 38m<sup>2</sup>  
Loaded by FR container

## PROJECTS

### BAHRAIN-OFFICE 2019

Bahrain Flat Pack Container House--Establishing collaboration, Lifetime Friends					
Company	Bahrain	Year	2019		
Project Information					
Project	3x40ft flat pack container office+prefab guard house&hut	Dimension	11.8mx6.75mxH3+1.5mx1.5mxH2.4mx5	Structure	Galvanized
Wall	EPS sandwich panel 50&75mm	Rooms	Office: 6 partitions Hut: 1 partition	Floor	PVC Self-adhesive flooring
Electricity	Prefabricated	Door	Steel Security Door 930x2000	Containers	1x40HQ



## BOTSWANA-20FT DETACHABLE CONTAINER BAR 2024

Company	Botswana	Year	2024
Project Information			
Project	20ft Detachable Container Bar	Dimension	3x6xH2.896x2
Structure	Galvanized	Electricity	Prefabricated
Wall	Rock wool sandwich panel 50mm	Bathroom	None
Door	Roller up door 6m x 2.896m	Terrace	With wooden plastic waterproof floor
Containers	1x40HQ		



## USA-20FT EXPANDABLE HOUSE 2024

Company	USA	Year	2024
Project Information			
Project	20ft Expandable House	Dimension	6.46x5.9xH2.5m
Structure	Galvanized	Rooms	Dormitory: 2 bedrooms Office: 3 partitions
Wall	EPS sandwich panel 50mm	Bathroom	Prefabricated
Floor	1.6mm PVC ceramic tile for bathroom	Kitchen	Prefabricated
Electricity	Prefabricated USA standard	Window	Aluminum Thermal Break Tempered Glass Window: 930x1100, 1800x1100
Door	Aluminum Thermal Break Tempered Glass Door 1820x2260	Containers	1x40HQ

