

KARVA

PLASTICS&THERMOFORM

KARVA
sheet

KARVA
ACRYLEX

O.S.B. 16. Cad. No:75/B Melikgazi-KAYSERİ / TURKEY

T +90 352 502 02 38 F +90 352 502 02 39

export@karva.com.tr info@karva.com.tr

www.karva.com.tr



KARVA
ACRYLEX

KARVA
Thermoforming

KARVA
CAD

KARVA
sheet

Your Solution
Partner in
Plastic and
Thermoforming

KARVA
sheet

KARVA
ACRYLEX





We are **Growing** Fast with Our Strong **Team**, Big **Customers** and New **Investments**

ABOUT



Karva is one of the leading manufacturers of extruded polymer plastic sheets and also a solution partner in the fields of Medical/ Furniture/ Household Appliances/ Agriculture/ Construction Equipment/ Cooling/ Automotive/ Sanitary Gadgets and Advertisement industries with high-quality products since 2014. We are assiduously working to be the leader in our sector on the national scale in our factory which is located in Karyari Industrial Zone with an area of 17,000 m² and 15,000 MT/year capacity of Plastic Sheet and Thermoforming Parts production.

By following the developing technology, our high-tech machinery, equipment, and experienced team of engineers enable us to maximize the quality of our products with the aim of being a brand on national and international scales.

Karva successfully meets all demands consisting of ABS, POLYSTYRENE, ASA, ACRYLIC, POLYCARBONATE, HIGH-GLOSS ACRYLIC, and COEX INDUSTRIAL Sheets.

By the way, industrial plastic sheets are produced from 0.5-8 mm thickness/max.2150 mm width in every size, color, texture, and design.

We create added value by contributing to the national and world economy with thermoforming according to the using area.

We are well aware of our product quality as well as the value-added to our products by our quality.

Furthermore, we are able to offer a variety of product options to our partners by implementing UV, antibacterial, antimicrobial, flame retardant polymer stabilizers in line with international standards.

Our greatest source of motivation is to be able to produce intermediate products in many sectors such as health, household appliances, construction, automotive, furniture, agriculture, construction equipment as well as advertising industries.

With the help of our R&D and P&D departments, in line with our solution partners' petitions, we design promptly the required parts with low cost as aluminum, polyester, or wooden thermoforming.

Our age is the age of knowledge... overall it is of vital importance to be aware of what we are producing and by following all the current developments in our field.

We provide high standard and quality service to maximize our client's satisfaction. In line with the innovative realities of our age, with our solution-oriented identity, we work co-hard to please our partner's needs in the best way possible.

Everything is for a better, livable world....

1.6MW Additional Solar Energy
Blow Molding Machine
Accredited Laboratory Establishment

2023

1.4MW Rooftop Solar Energy

2022

Moved to New Factory 17,000m²
(12,500m² production) closed area
+1 Plastic Ext. Line – (PMMA, PC) New
Capacity 15,000 MT/Year
2x4 m Thermoforming Machine
2 New Robot Systems

2021

+1 Plastic Ext. Line, New Capacity
10,000 MT/Year

2018

+2 New Thermoforming Machines

2016

Produced ABS Extruded Plastic
Sheets, Capacity 5,000 MT/Year

2015

Established as a Plastic
Thermoforming Factory

2014

INDUSTRIES

everything
is for
sustainable
production

KARVA
sheet

KARVA
ACRYLEX

ABS
PMMA/ABS
PS/HIPS
HIPS-ESCR/HIPS-GPPS
HG ACRYLIC

PMMA (Acrylic)

**REFRIGERATOR
& COOLING**
HIPS-ESCR
ABS



SANITARY
PMMA (Acrylic)/ABS
PMMA



FURNITURE
HIGHGLOSS



**MEDICAL
EQUIPMENT**
ABS
PMMA (Acrylic)/ABS



ADVERTISEMENT
PMMA (Acrylic)
PC



VEHICLES
ABS
PMMA (Acrylic)/ABS
ASA/ABS



**OTHER
INDUSTRIES**
ELECTRICAL
VEHICLE
TRAVEL
BOILER
ELECTRONICS



CONSTRUCTION
PMMA (Acrylic)
PC



**KIDS
FURNITURE**
ABS / PMMA
HIPS / GPPS



SANITARY

PMMA (Acrylic)/ABS
PMMA (Acrylic)



KARVA PMMA/ABS Sanitary Sheets are a competitive solution to suit bathtubs, shower trays and panels makers alike. With a glossy co extruded layer of acrylic on a medium impact ABS, this product combines very good surface quality with rigidity. Widely appreciated by Sanitary industry, this product is Karva's bestseller.

Providing a notable advantage thanks to its high-quality rightly priced, this product offers long lasting stable mechanical characteristics, UV stability and good stress cracking resistance, beside that Karva's PMMA/ABS or/and PMMA/ABS/PMMA sheets have resistance to most of chemicals and cleaning, Acrylic surfaces are specular and durable, it provides long life, easy care and hygienic requirements for bathtubs.

One side is protected by thermoformable clear PE film, allowing safer handling during the complete manufacturing cycle, within the industry standard operating temperatures, these sheets are also available with CSS treatment (corona treatment).

Our wide range sizes and thickness options will give customers more choices, we are satisfying our customers with quality sheets, innovative colors, textures and designs.

KARVA Extruded Acrylic Sheets contains % 100 acrylic and produced by extrusion method. Mainly preferred in big sizes jacuzzi and bathtub productions.

- High Impact
- 100% Acrylic
- High performance even in big-sized Jacuzzis

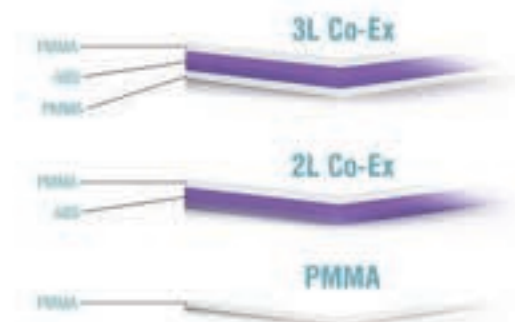
SHOWERS TRAYS & CABINET PANEL

ABS/PMMA sheets are economical solutions for manufacturing shower trays and cabinet panel. Their resistance to scratching and chemicals, combined with their glossy surface make our materials particularly suitable for this industry.

•We recommend using 3L (PMMA/ABS/PMMA) for bathtub and shower trays, 2L (PMMA/ABS) sheets for panels.

BATHTUBS & JACUZZI

The perfect balance between mechanical properties and high chemical resistance make our ABS/PMMA sheets one of the most selected materials for the manufacture of bath tubs and Jacuzzi tubs.



REFRIGERATORS SHEETS OUTSIDE

REFRIGERATOR
& COOLING
HIPS ESCR
ABS



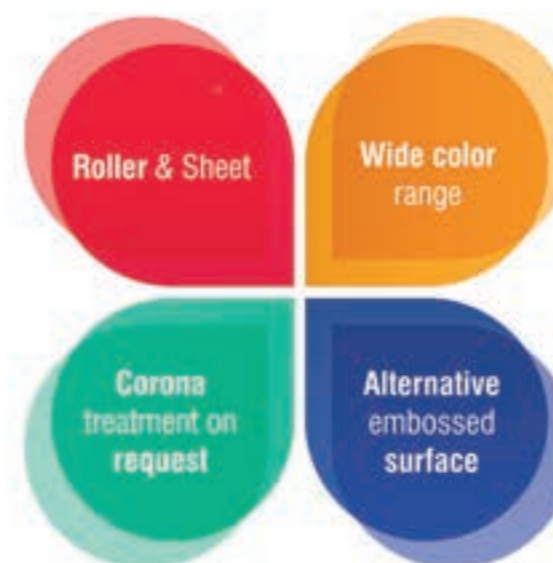
MULTI-LAYER ACRYLIC/ABS SHEET

- Refrigerator & cooler's outside accessories
- High UV resistance.
- High scratch resistance
- Highgloss surface
- Low flexural strength
- With Protected Foil

ABS SHEET-MEDIUM IMPACT

- Refrigerator & cooler's outside accessories
- High & Mid UV resistance.
- Medium scratch resistance
- Matt or Highgloss surface (on request)
- High flexural strength
- Embossed Surface (on request)

REFRIGERATORS SHEETS INSIDE



HIPS ESCR SHEET-HIPS refrigerator cabinet sheet

- Environmental cracking resistance (ESRC) (-30 C / polyurethanes)
- Inner liner for cabinet
- Matt surface : 20 GU (60 degrees angle)
- Low humidity absorption
- One side 50-55 Corona treatment

HIPS ESCR CO-EX SHEET refrigerator door sheet

- Inner liner for doors
- Highgloss surface : ≥60 GU (60 degrees angle)
- Low humidity absorption
- One side 50-55 Corona treatment

High stress-cracking resistance and excellent mechanical properties are essential for the materials employed in this industry.



MEDICAL EQUIPMENT

ABS
PMMA (Acrylic)/ABS

ABS is a chemical substance widely used in environmentally friendly anti-corrosion applications and used in areas where toughness and durability are important. It is easily recycled and has a wide temperature operating range. Produced in an infinite range of colors, finishes and textures.

ABS Specifications:

- High Impact Resistance
- Embossed Pattern on Demand
- Easy to Clean
- Antibacterial/Antimicrobial options

MELT BLOWING ACCESSORIES



ABS BED SURFACES



PMMA (Acrylic)/ABS

PMMA/ABS is a multi-layer combination of ABS and co-extruded PMMA. Features include superior scratch resistance, increased hardness, improved chemical resistance, stability and has extremely wide range of colours.

Embossed Patterns

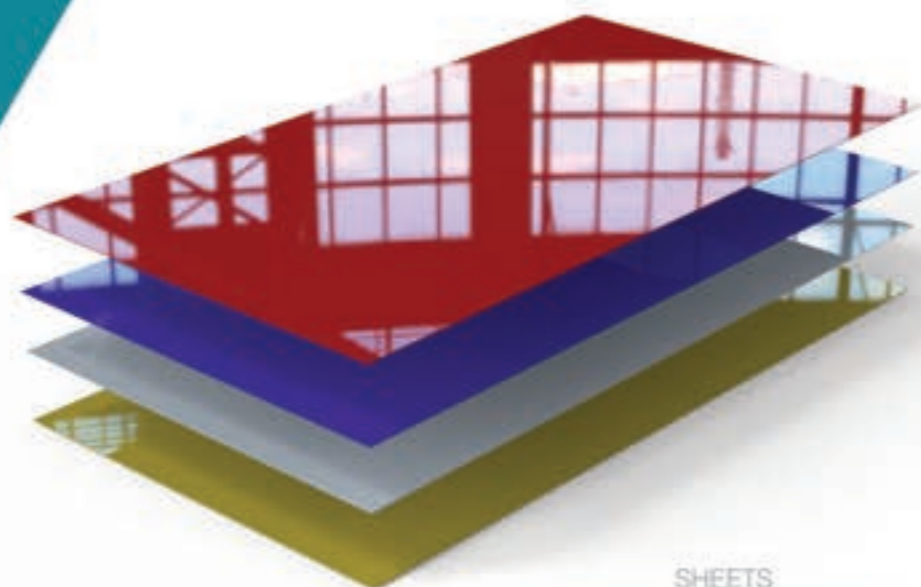


PMMA/ABS Specifications:

- PMMA laminated on ABS
- High Gloss Surface
- High Scratch Resistance
- Protection Foil Coating
- High UV Resistance

FURNITURE HIGHGLOSS

Feel the quality and comfort in your home with **Karva Highgloss Acrylic Sheets**

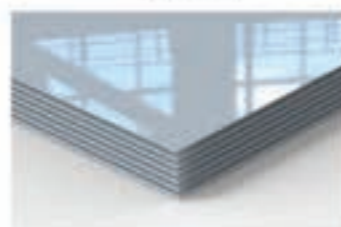


High Gloss Acrylic Sheet provides you with a luxury, high-quality finish.

Acting as a mirror-like shine, which creates a modern feel, it is ideal for your kitchen, bathroom, dining room, or your office.

Resistant to impacts.

SHEETS



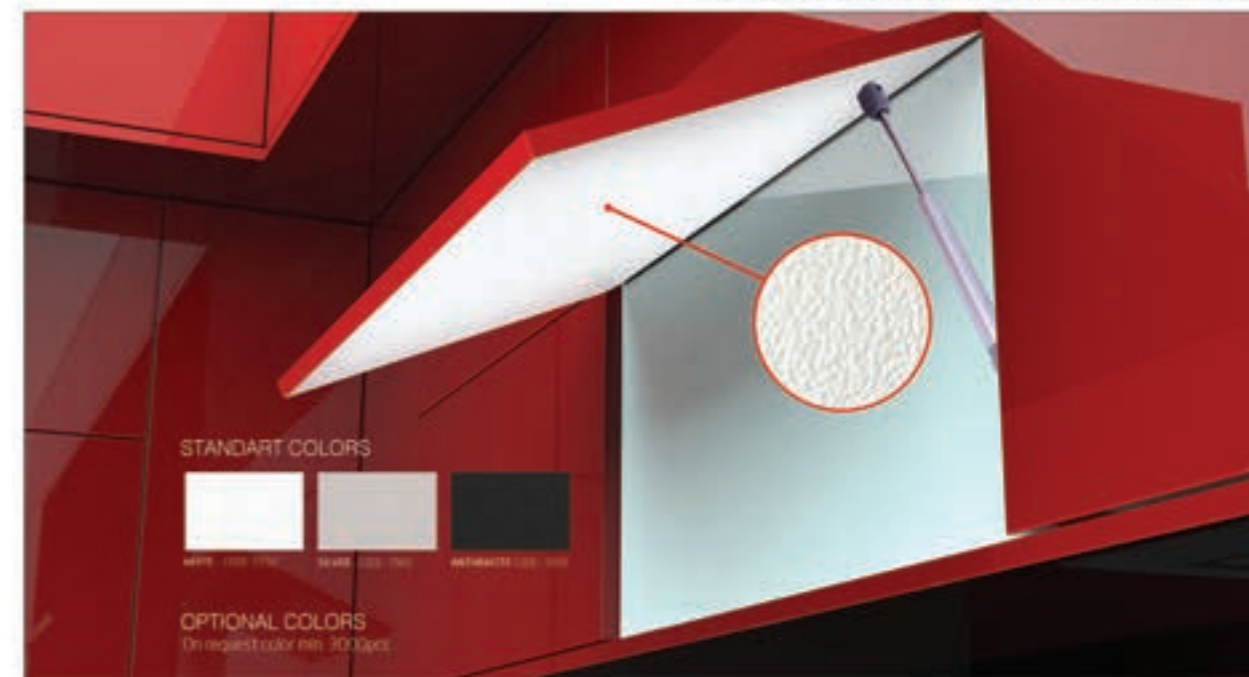
1220x2400/2800
On request

ROLLER



1230x R (300 mt/R)
On request

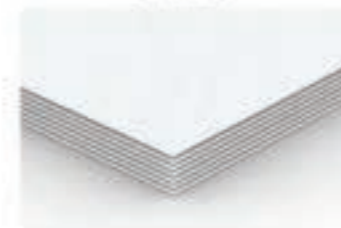
Embossed HIPS Back Sheets



CHEMICAL PARAMETERS

SCRATCH RESISTANCE : 0,6 N (DIN 68861)
 CHEMICAL STRENGTH : Resistant to general Chemical cleaners, but has not resistant to alcohol and solvent-based cleaners
 ENVIRONMENT CONDITION : -20°C / +55°C
 UV RESISTANCE : 650 w/m², 50 °C, E = 0,6N / 400h
 FLAMMABILITY : HB (ISO 1221/ UL94E)

SHEETS



1220x2400/2800
On request

ROLLER



1230x R (300 mt/R)
On request



KIDS FURNITURE

ABS/PMMA
HIPS/GPPS



PMMA/ABS Specifications:

- PMMA laminated on ABS
- High Gloss Surface
- High Scratch Resistance
- Protection Foil Coating
- High UV Resistance



PMMA/ABS is a multi-layer combination of ABS and co-extruded PMMA. Features include superior scratch resistance, increased hardness, improved chemical resistance, stability and has extremely wide range of colours.



HIPS/GPPS Specifications:

- High Impact Resistance
- High Scratch Resistance
- Protection Foil Coating
- Various Colors
- Wide Usage Area
- Durable
- FDA Compliant

VEHICLES

ABS
PMMA (Acrylic)/ABS
ASA/ABS

PMMA/ABS is a multi-layer combination of ABS and co-extruded PMMA. Features include superior scratch resistance, increased hardness, improved chemical resistance, stability and has extremely wide range of colours.

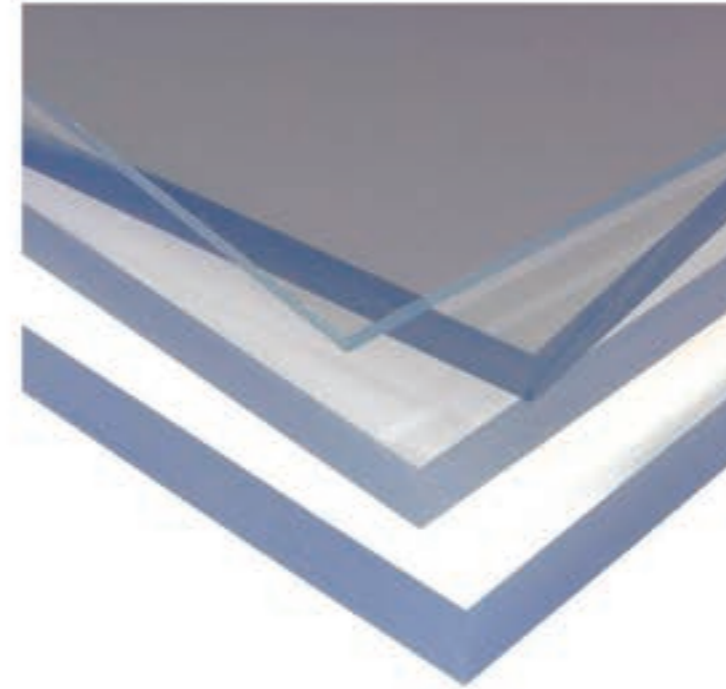
ASA/ABS These special mono- and multi-layer sheets were developed to meet the highest demands in respect of design and optical effect. In order to meet the high demands in respect of design and technology, special co-extruded composite sheets have been developed. They offer an optimum combination of necessary mechanical properties together with outstanding surface quality. The increased rigidity and shorter production times are advantages



ADVERTISEMENT

PMMA (Acrylic)
PC

PMMA (Acrylic) is a thermoplastic when extreme strength and high thermal resistance is not necessary is often preferred because of its moderate properties, easy handling, processing and naturally UV resistance.



CONSTRUCTION

PMMA (Acrylic)
PC
ASA/ABS

PC Polycarbonate is a thermoplastic that comes in a transparent sheet. It is incredibly tough and absorbs minimal moisture. It resists impacting damage as well as water damage, and is also flame-retardant and chemical resistant.

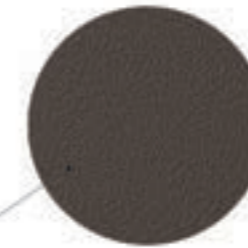
ASA/ABS WALL



DRONE SHELTER - PMMA/ABS



EV SHELTER - ABS



BOILER COVER - ABS



OTHER INDUSTRIES

ELECTRICAL
VEHICLE
TRAVEL
BOILER