

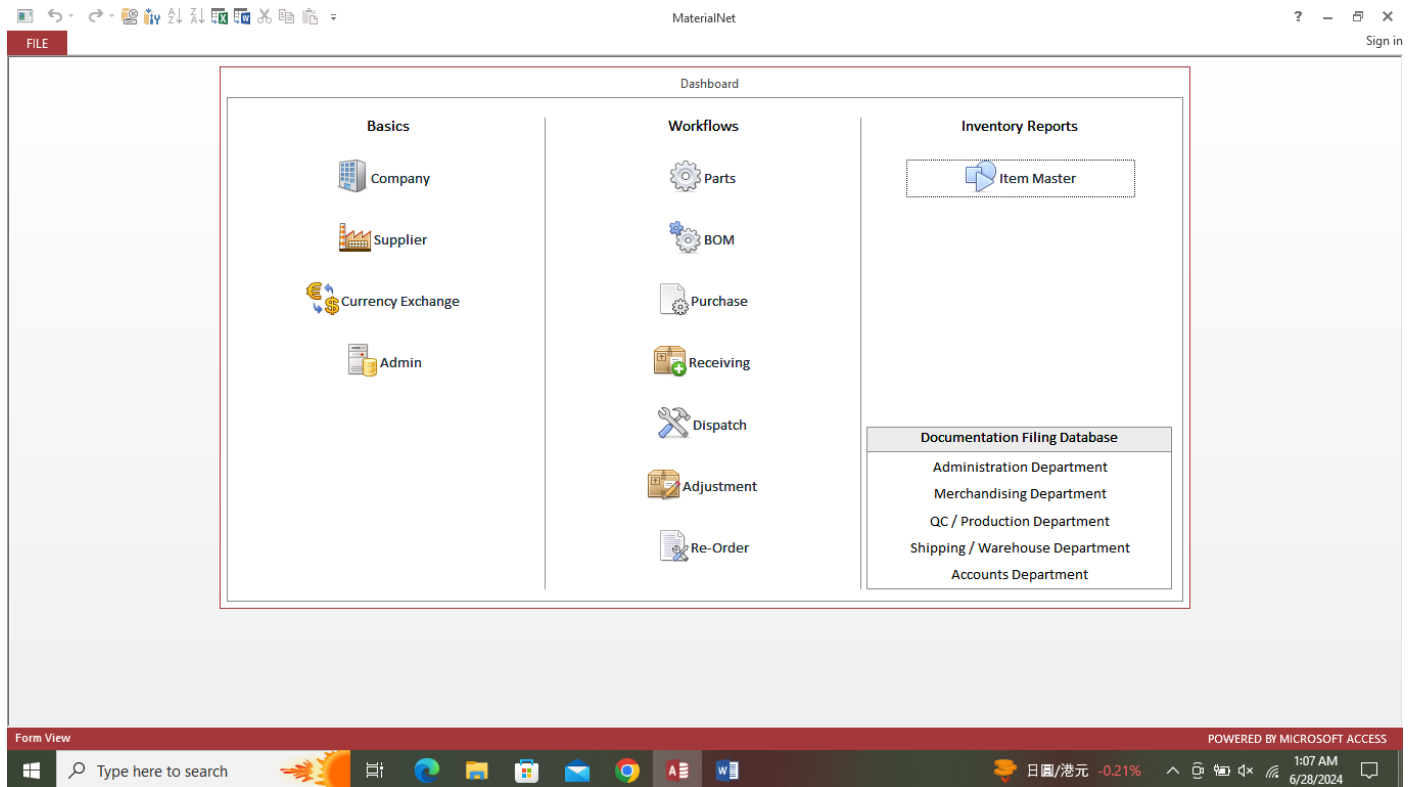


**ibuyer.hk**



## Introducing MaterialNet: Revolutionizing Material Resources Planning for Manufacturers

MaterialNet is a game-changing software designed to streamline the management of raw material dispatch to workshops for manufacturers. At its core, MaterialNet simplifies the purchase, receiving, and dispatch processes, all overseen by its powerful Bills of Material (BOM) modules.



The core value of MaterialNet lies in its ability to empower stock keepers to efficiently control the dispatch of any parts using the BOM modules. Production officers can effortlessly review the raw material status before converting the BOM to dispatch, ensuring that the warehouse is issued a pick list for every part prepared for production. This level of insight is crucial, especially in the context of JIT (just in time) production, where knowing the inventory level of each part before production is essential to meeting delivery deadlines. Moreover, MaterialNet's Re-Order modules enable purchasing officers to trigger re-orders easily, leading to significant savings on parts and raw material wastage.

Traditional bookkeeping methods, such as using log books to maintain inventory, present several challenges. While adequate for general purposes, they often falter when it comes to overseeing a large number of parts and providing a comprehensive picture of inventory status. Human error and imprecise quantity tracking further compound these issues, resulting in incorrect inventory levels that can mislead management decisions on purchasing and production planning.

Item Master - MaterialNet

FILE Find Next Previous List Close

Item ID: 298 PurID: 112  
 Article No: glass-no Date: 28-Jun-24  
 Item Group: eyeglass Order Ref No: PO-00112/24  
 Brand Name: EYE Handle By: procurement officer  
 Description: plastic looking glass Deliver By: Truck - Local delivery  
 Remarks 1: 100% nylon Supplier: Plastic Goods Factory  
 Remarks 2: HOYA glass coated Price: USD 100 Piece  
 Remarks 3: assemble in USA Del Date: 30-Sep-24  
 Total Leftover: 100.0000 Ord Qty: 1,000.0000 Photo: \Pictures\glasses-8779028\_1920.jpg

Go To Article No. by pull down list  
 glass-no

1. Select Parameter Filter & Look Up  
 Article No: glass-no  
 Item Group: eyeglass  
 Brand Name: EYE  
 Description: plastic looking glass  
 Supplier: Plastic Goods Factory  
 = Result Items

2. Select Parameter Filter For Report  
 Location: Rack A  
 Specification: Black Color

3. Select Leftover Report  
 Leftover By Above Filter

4. Item Storage Breakdown Report  
 Item Storage Breakdown By Expiry Date

5. select report date range  
 start date: 1-Jan-10 end date: 28-Jun-24

6. Movement & Closing Stock Report  
 Movement and Closing Stock Between

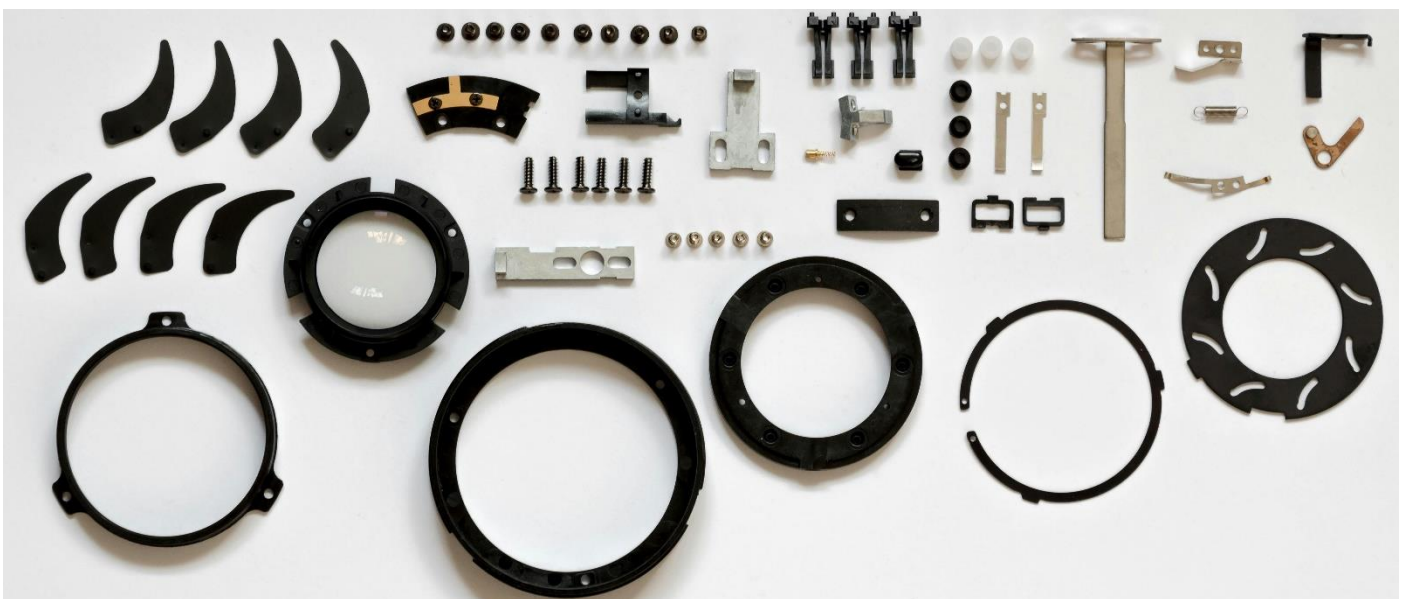
| Receiving |         |          |              | Dispatch |        |          |              |          |
|-----------|---------|----------|--------------|----------|--------|----------|--------------|----------|
| In ID     | Time In | Location | Spec.        | Qty.     | Out ID | Time Out | Spec.        | Qty.     |
| 95        | 28-Jun  |          | red color    | 25.0000  | 71     | 28-Jun   | pink color   | 25.0000  |
| 95        | 28-Jun  |          | blue color   | 25.0000  | 71     | 28-Jun   | pastel color | 25.0000  |
| 96        | 28-Jun  |          | yellow color | 25.0000  | 72     | 28-Jun   | white color  | 25.0000  |
| 96        | 28-Jun  |          | green color  | 25.0000  | 72     | 28-Jun   | opaque color | 25.0000  |
| 97        | 28-Jun  |          | white color  | 25.0000  | Total  |          |              | 100.0000 |
| 97        | 28-Jun  |          | opaque color | 25.0000  |        |          |              |          |
| 98        | 28-Jun  |          | pink color   | 25.0000  |        |          |              |          |
| 98        | 28-Jun  |          | pastel color | 25.0000  |        |          |              |          |
| Total     |         |          |              | 200.0000 |        |          |              |          |

Record: 1 of 282 No Filter Search

Form View POWERED BY MICROSOFT ACCESS

日圓/港元 -0.21% 1:07 AM 6/28/2024

MaterialNet emerges as the definitive solution to these challenges by providing real-time inventory levels for each item, status reports of end products based on required parts quantities, and inventory level checklists to ensure parts adequacy for end product production. Moreover, MaterialNet offers stock-in and stock-out activity reports, pending reports for outstanding deliveries from vendors, and Re-Order modules to determine re-order levels and prevent overbooking of parts.





Key unique features of MaterialNet include the ability to convert BOM to dispatch and purchase seamlessly, detailed BOM sheets with total value to control production costs, comprehensive re-order modules for efficient vendor conversion, cost comparison reports to reduce parts purchasing costs, and an activity log to track data changes for accountability and transparency.

BOM - MaterialNet

FILE

BOM ID: 238  
 Date: 28-Jun-24  
 Model No: scooter-no  
 Description: electric scooter  
 Bulk Quantity: 80.0000

Remarks:
 

- product must meet REACH
- product comply with IEEE
- able to reach EU ISO standard
- product assembly in India
- product final testing run in India Bombay
- surface painting & coating in Sri Lanka
- finished goods export from Madras




Photo: 2\Pictures\child-1293122\_1920.png

Go To BOMID. by pull down list

1. Select Parameter Filter & Look Up

Model No: scooter-no  
 Description: electric scooter  
 = Result

BOM Detail Sheet Print Preview  
 BOM Inventory Detail Checklist

Convert Current BOM to Dispatch (for production)

A. Select The Supplier For Purchase Conversion

B. Convert Current Record to Purchase By Supplier

1. select 2. select 3. select & insert

May input directly to Article No (parts), Description, Consumption..... etc OR use select 1, 2, 3 pull down list to select & insert parts details>>>>

| Article No      | Description | Consumption | Required Quantity | Curr | Price | Unit | Supplier | Leftover Quantity | Pending Quantity | Status? |
|-----------------|-------------|-------------|-------------------|------|-------|------|----------|-------------------|------------------|---------|
| motor-1.0Amp    | Brass Wire  | 1.0000      | 80.0000           | INR  | 80    | unit | plastic  | 235.3400          | 17596.6600       | Ok      |
| switches-manual | PU Holder   | 1.0000      | 80.0000           | INR  | 80    | unit | clips    | 0.0000            | 78.0000          | No good |
| clips-66        | Switches    | 1.0000      | 80.0000           | INR  | 80    | unit | package  | 0.0000            | 80.0000          | Ok      |
| LED             | Memory      | 1.0000      | 80.0000           | INR  | 235   | Yd   | motor    | 1500.0000         | 50.0000          | Ok      |
| boltnuts-30mm   | Brass Wire  | 1.0000      | 80.0000           | INR  | 70    | Yd   | package  | 0.0000            | 78.0000          | No good |
| motor-3.4V      | Diode       | 1.0000      | 80.0000           | INR  | 90    | Lb   | clips    | 0.0000            | 79.0000          | No good |
| package-bulk    | Capacitor   | 1.0000      | 80.0000           | INR  | 110   | Lb   | pcbboard | 0.0000            | 567.0000         | Ok      |
| clips-1.2mm     | Battery     | 1.0000      | 80.0000           | INR  | 128   | Lb   | wire     | 0.0000            | -8.0000          | No good |
| studs           | PVC Holder  | 1.0000      | 80.0000           | INR  | 85    | kg   | plastic  | 1494.0000         | 56.0000          | Ok      |

Record: 1 of 236

BOM - Bills Of Material ID Number

POWERED BY MICROSOFT ACCESS

12:56 AM 6/28/2024

In essence, MaterialNet is not just a software solution; it's a catalyst for efficiency, cost savings, and informed decision-making in material resources planning for manufacturers. Experience the transformative power of MaterialNet today and revolutionize your material management processes with ease.