

华丰股份：605100



# 发电机组 GENERATOR SETS

专业电力解决方案提供商  
Professional power solution provider



服务热线：400 658 3060  
销售热线：400 0536 000  
邮 编：262100  
网 址：www.powerhf.com  
邮 箱：admin@powerhf.com  
清池厂址：山东省潍坊市高新区樱前街7879号  
安丘厂址：山东省潍坊市安丘经济开发区汶水路78号

华丰动力股份有限公司  
POWER HF CO.,LTD.

Service hotline: 400-658-3060  
Sales hotline: 400-0536-000  
Post code: 262100  
Website: www.powerhf.com  
E-mail: admin@powerhf.com  
Qingchi Address: No. 7879, Yingqian Street, High-Tech Zone, Weifang, Shandong  
Anqiu Address: No. 78, Wenshui Road, Anqiu Economic Development Zone, Weifang, Shandong



扫码关注 了解更多

华丰动力股份有限公司  
POWER HF CO.,LTD.

华丰动力股份有限公司始创于1920年，是中国最早生产柴油发动机的厂家之一，在当时享有“长江以北第一厂”的美誉。经过百年的发展，公司已成为中国内燃机行业排头兵企业和卓越企业之一，并于2020年8月在上海证券交易所主板上市，股票简称：华丰股份，股票代码：605100。

公司以市场和战略客户需求为导向，专注于核心零部件（包含机械零部件和电子零部件两部分）、柴油发动机和智能化发电机组的研发、制造与销售，以及通信基站运维服务。产品广泛应用于商用车、新能源汽车热管理系统、工程机械、农业机械、数据中心、固定动力、发电设备和船舶等领域。公司营销服务网络全面覆盖中国、印度、缅甸等，遍及全球 40 多个国家和地区。

公司坚持科技引领和创新驱动，在节能减排、轻量化、低碳材料、新能源、储能、电子智能化等领域持续加大研发投入，持续推动业务转型升级。公司将继续秉承“创新、进取、和谐、求优”的管理理念，不断提升公司核心竞争力，走高质量创新发展之路，努力打造行业领先的民族制造企业，助力提升中国制造的技术水平。



Power HF Co., LTD., founded in 1920, is one of the earliest manufacturers of diesel engines in China, and was accorded the prestigious title of 'No. 1 factory on the North of Yangtze River'. After 100 years of development, the company has become one of the leading enterprises and excellent enterprises in China's internal combustion engine industry, and listed on the main board of Shanghai Stock Exchange in August 2020 with stock code: 605100.

Guided by market and strategic customer needs, the company focuses on R&D, manufacturing and sales of core components (including mechanical parts and electronic parts), diesel engines and intelligent generator sets, as well as telecom operation and maintenance services. Products are widely used in commercial vehicles, new energy vehicle thermal management system, construction machinery, agricultural machinery, data centers, fixed power, power generation equipment and ships and other fields. The company's marketing service network covers China, India, Myanmar and more than 40 countries and regions around the world. The company adheres to science and technology leadership and innovation-driven, and continues to increase R&D investment in the fields of energy conservation and emission reduction, lightweight, low-carbon materials, new energy, energy storage, and electronic intelligence, and continues to promote business transformation and upgrading. The company will continue to adhere to the management philosophy of "innovation, progress, harmony and excellence", constantly improve the company's core competitiveness, take the road of high-quality innovation and development, and strive to build a leading national manufacturing enterprise in the industry to help improve the technical level of Chinese manufacturing.



ENGINE PLANT



GENERATOR SET PLANT



IM PLANT



1920

1920年,滕虎忱先生创建潍县华丰机器厂。



In 1920,Huafeng Diesel Engine Co.Ltd was founded by Mr. HuchenTeng.



1932

1932年,华丰第一台15马力柴油机成功下线。



In 1932,Huafeng successfully manufactured itself first 15hp diesel engine.



1965

1965年,自主研发185F型柴油机。



In1965,Huafeng developed the 185F series diesel engine.



1951

1951年,申请注册“华丰”牌商标,成为中国最早注册柴油机商标的厂家。



In1951,Huafeng became the first diesel engine manufacturer to register its "Huafeng" trademark and.



1971

1971年,自主研发495型柴油机,华丰开始由单缸机向多缸机跨越。



In 1971,Huafeng developed the 495 series diesel engine and acheved the leap from sinhle cylinder to multiple cylinders.



1983

1983年,与英国里卡多咨询工程有限公司联合研制R系列柴油发动机。



In 1983,Huafeng jointly developed the R series diesel engine with Ricardo PLC.



2004

2004年,成立中外合资山东潍柴华丰动力有限公司。



In2004,Shandong Weichai Huafeng power Co.,Ltd was established.As a sino-foreign joint venture.



1994

1994年,与潍坊柴油机厂合并,更名为潍坊柴油机厂第二发动机厂。



In1994, Huafeng merged with Weifang Diesel Engine Factory and renamed as "Weichai Diesel Engine Factory Plant Two"



2007

华丰与世界500强企业印度Reliance公司签订了机组长期出口合同,华丰仅用短短一年时间圆满完成近40,000台静音发电机组的出口任务。



Huafeng signed a long-term export contract with Reliance Corporation of India, a Fortune 500 company in the world. Huafeng successfully completed the export order of nearly 40,000 silent generator sets in just one year.



2009

2009年,华丰动力印度公司成立。



In 2009, Huafeng India was established.



2020

公司上市,登陆上交所主板  
股票代码:605100。



The company was listed on the Main board of the Shanghai Stock Exchange. Stock code: 605100.



2013

2013年,华丰动力股份有限公司成立。



In2013, Power HF Co., Ltd. was established.

# 企业认证 Enterprise Certification



ISO9001:2015



ISO14001:2015



OHSAS18001:2018



IATF16949



TLC 2000



TLC2200



ISO50001:2018

## 主要合作伙伴 Key Customers



中铁西安局集团



石油济柴



始于1920  
SINCE  
百年华丰 传承动力

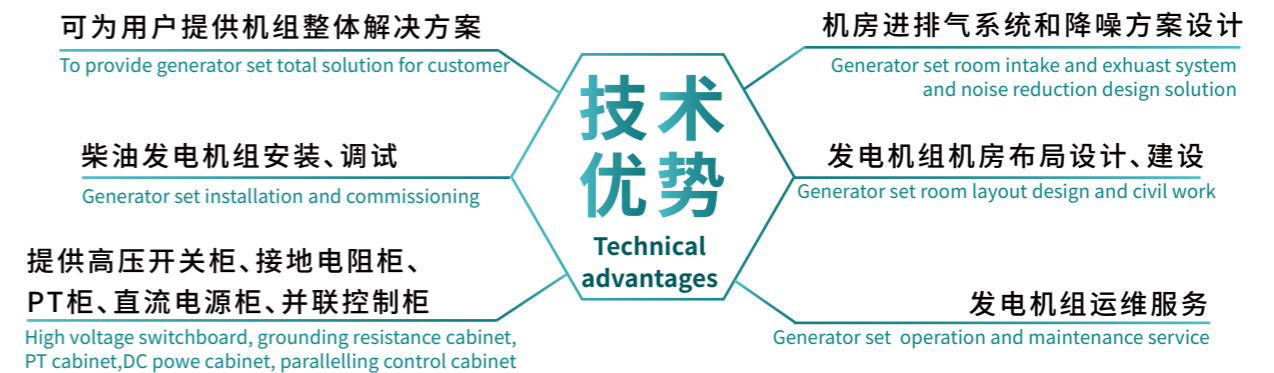
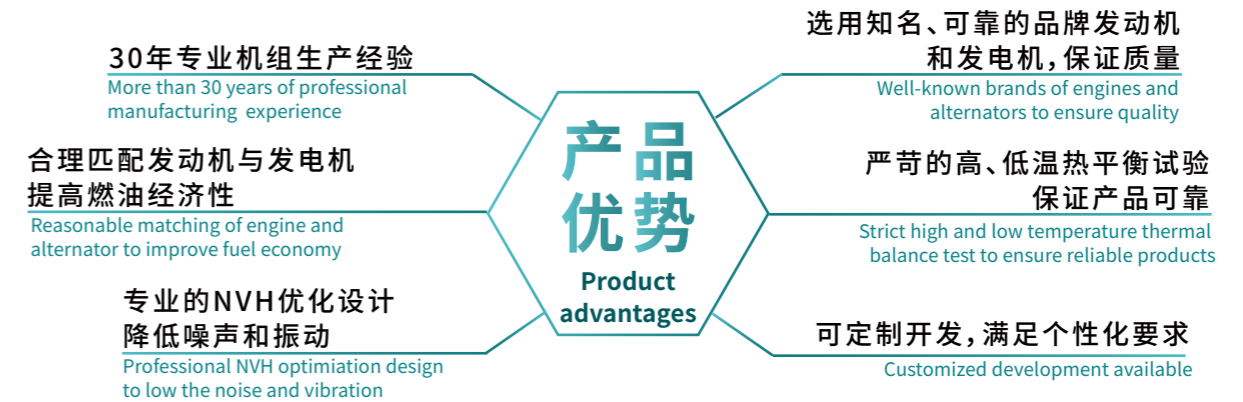
## Our advantages 我们的优势

华丰发电机组工厂拥有剪板、折弯、冲压和激光切等各类钣金加工设备，并拥有先进的生产和测试设备，年生产能力可达5000余套，可生产10kVA-3000kVA的各类发电机组，广泛应用于工业、铁路、矿山、通信、油田等领域。

华丰生产的发电机组凭借可靠的性能、人性化的设计、显著的低噪音和低震动效果等优点深得国内外客户青睐并获得大量出口订单，远销东南亚、美洲及非洲国家。

Power HF generator set factory has shears, bending, stamping and laser cutting and other sheet metal processing equipment, and has advanced production and testing equipment, annual production capacity of more than 5000 sets, can produce 10kVA-3000kVA of all kinds of generator sets, widely used in industry, railway, mining, communication, oil fields and other fields.

The generator sets produced by Huafeng have won the favor of domestic and foreign customers and obtained a large number of export orders by virtue of their reliable performance, humanized design, remarkable low noise and low vibration effect, and are exported to Southeast Asia, America and African countries.



华丰发电机组，种类齐全，功率覆盖范围大，定制化和自动化程度高，用户选择丰富。

华丰发电机组设计符合GB/T2820、ISO8528等相关国家或国际标准，按结构型式分类，有开架式、静音式、集装箱式、移动式；按使用条件分类，有陆用和船用机组；按燃料分类，有柴油发电机组和燃气发电机组。

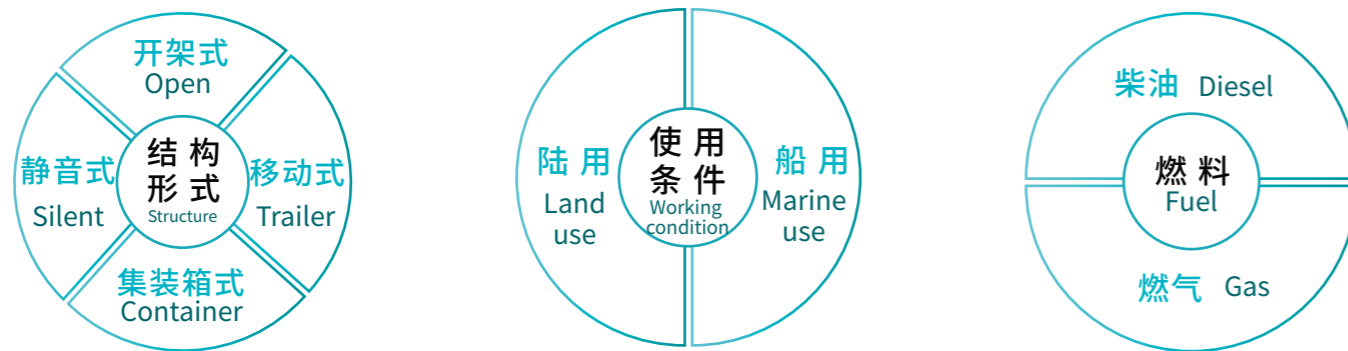
Power HF generator sets are of complete variety, large power coverage, customization and high degree of automation and rich customer choices.

Power HF generator sets design is in line with GB/T2820, ISO 8528 and other relevant national or international standards.

According to the type of structure, open, silent, container and trailer types are available;

According to the working conditions, there are land use and Marine use;

According to fuel, there are diesel generator sets and gas generator sets.



除传统发电机组外，华丰还开发了适用于基站的混合电源产品。

In addition to traditional generator sets, Power HF has also developed hybrid power products for telecom.

### A / 华丰-开架机组

#### Open type generator set

华丰开架式发电机组外观新颖，匹配和结构设计科学、合理，具有良好的启动性能和负载特性，保护系统安全可靠，操作简便，使用成本低、使用寿命长。

Power HF open generator sets have novel appearance, scientific and reasonable matching and structural design, good starting performance and load characteristics, safe and reliable protection system, easy operation, low cost and long service life.



### B / 华丰-静音机组

#### Silent generator set

华丰静音发电机组是公司自行研发生产，多款产品获国家专利，采用先进的降噪、减震技术和新型吸音材料，为客户提供可靠电力的同时，减少噪声污染，广泛应用于居家、电信、邮电、银行、酒店、医院以及工矿企业等对噪声有严格要求的供电场所。

Power HF silent generator set are the company's own research and development and production. A number of products have won national patents. They adopt advanced noise reduction, shock absorption technology and new sound absorption materials, providing customers with reliable power and reducing noise pollution. They are widely used at home and in telecommunications, posts and telecommunications, banks, hotels, hospitals and industrial and mining enterprises where the strict noise limitation is required.

#### 亮点 Advantages

I 良好的通风系统及防热辐射措施保证机组在苛刻环境条件下始终工作于最佳温度；

Good ventilation system and thermal radiation protection measures to ensure that the generator set always works at the best temperature under harsh environmental conditions.

II 减震方案均经过严格计算和试验验证，保证机组运行平稳；

The damping scheme has been strictly calculated and tested to ensure the stable operation of the generator set.

III 箱内布局和箱体设计充分考虑用户操作和运维的方便性，更科学、更人性化。

The convenience of user operation and maintenance is fully considered when doing the layout and design of canopy. It's more scientific and humanization.



## C/华丰—集装箱机组 Container generator set

华丰集装箱发电机组采用全封闭和模块化组合方式，支持标准箱和个性化定制箱。因其设备配套完整，操作简便，运输安全可靠，可广泛运用于大型室外、矿山等地。

Power HF container generator set adopts fully enclosed and modular combination mode, having standard and customized containers to choose. Because of its complete equipment, easy operation, safe and reliable transportation, it can be widely used in outdoor, mining and other places.



采用国际标准的集装箱机组可直接用于海运，大大节约运输成本；  
Containers complying with international standard can be directly used for shipping and it can greatly save transportation costs.

集装箱开有前、后门和两侧门，检修和维护方便；  
The container has front, rear and two side doors. It's easy to repair and maintain;

## D/拖车机组 Trailer generator set

华丰拖车机组又称移动电站，可防雨、防尘，窗门采用自动液压支撑，开启方便，底盘车轮根据用户需要，可设计成两轮、四轮、六轮，设计有手动、自动、气动和液压制动的刹车装置，制动可靠平稳，是户外施工的理想电源。

Power HF trailer genset is also called mobile power generation. It's rain-proof and dust-proof. Windows and doors adopt automatic hydraulic and are easy to open. Chassis wheels can be designed into two wheels, four wheels, six wheels according to user needs. They are designed with manual, automatic, pneumatic and hydraulic brake device. The braking is reliable and stable. It's the ideal power for outdoor construction.



## 合作品牌 Cooperative brands

华丰不仅注重机组故障率质量指标，而且更加重视机组发出电力的稳定性指标，所以我们只采用知名发动机、发电机、控制器、断路器和双电源自动开关等总成或零部件，给用户提供了丰富的选择组合，满足了客户的定制化要求。

Power HF not only pays attention to the quality index of the generator set failure rate, but also pays more attention to the stability index of the power generated by generator set, so we only use well-known engines, alternators, controllers, circuit breakers and dual power automatic switches and other assemblies or parts. It provides users with a rich combination of choices to meet the customized requirements of customers.

## 发动机合作品牌 Engines



## 发电机合作品牌 Alternators



## 控制器合作品牌 Controllers



## 双电源开关合作品牌 Switchgears



华丰发电机组类别、系列、型号众多，可选配置丰富，并且可根据用户要求提供定制化配置，不在列表中的机型，请与公司联系咨询。

Power HF generator sets have plenty of categories, series, models and have rich optional configurations. Customized configuration according to user requirements can also be provided. Please contact the company for information for those not in the list of models.

# 华丰陆用发电机组

## HF-Land use generator sets

### 1.1 华丰系列陆用柴油发电机组

#### Power HF series Diesel Generator sets

华丰系列陆用柴油发电机组选用本公司生产的“华丰动力”牌重型柴油机

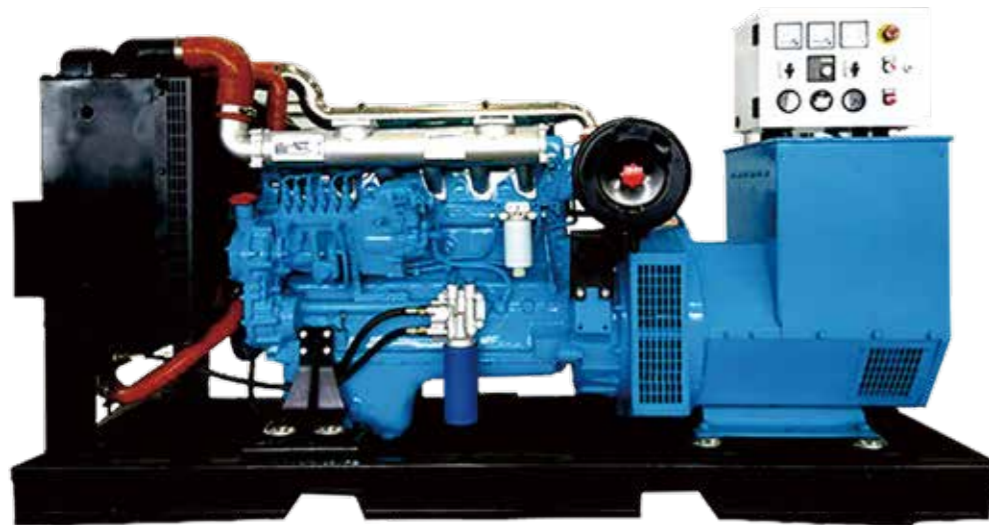
系直列、水冷、四冲程高速柴油机，分为两缸、三缸、四缸、六缸，缸径95/100/102/105/108/110mm

行程:117/120/125/130/135mm

功率覆盖范围:26.5-132KW, 转速1500或1800r/min

优点:燃油耗低、可靠性高、耐久性高、低温启动好等

发电机组主用容量范围:10kVA-150kVA (1500转/分)



Power HF series land use diesel generator sets equips with the "Power HF" brand heavy duty diesel engine produced by our company, which are of in-line, water-cooled, four-stroke, high-speed diesel engines, which are two-cylinders, three-cylinders, four-cylinders and six-cylinders with Bore of 95/100/102/105/108/110 mm.

Stroke of 117/120/125/130/135 mm are available.

The power covers from 14kW to 132 kW .

Speed of 1500 r/min and 1800 r/min are available

They have advantage of low fuel consumption, high reliability, high durability and good low-temperature start performance, etc.

The prime power range of the generator sets are 10kVA-150kVA (1500 rpm).

### 技术参数 Technical specifications

S/n	Genset model	Prime power		Standby power		Diesel Engine			
		kW	kVA	kW	kVA	Engine Model	Make	Power (kW)	Speed r/min
1	HF-8RX	8	10	9	11	PHF2014D	Power HF	14	1500
2	HF-12RX	12	15.0	13	16.5	PHF2017D	Power HF	17	1500
3	HF-20KX	20	25.0	22	27.5	PHF4027D	Power HF	26.5	1500
4	HF-24KX	24	30.0	26	33.0	PHF4033D	Power HF	33	1500
5	HF-32KX	32	40.0	35	44.0	PHF4042ZD	Power HF	42	1500
6	HF-40RX	40	50.0	44	55.0	PHF4056ZLD	Power HF	56	1500
7	HF-50RX	50	62.5	55	68.8	PHF4056ZLD	Power HF	56	1500
8	HF-64RX	64	80.0	70	88.0	PHF4075ZLD1	Power HF	75	1500
9	HF-75RX	75	93.8	83	103.0	PHF4084ZLD1	Power HF	84	1500
10	HF-80RX	80	100.0	88	110.0	PHF6100ZLD1	Power HF	100	1500
11	HF-90RX	90	112.5	99	123.8	PHF6100ZLD1	Power HF	100	1500
12	HF-100RX	100	125.0	110	137.5	PHF6110ZLD1	Power HF	110	1500
13	HF-120RX	120	150.0	132	165.0	PHF6132ZLD1	Power HF	132	1500

- 本表所列机组发电频率均为50HZ(根据用户要求,也可提供60HZ发电机组),功率因数为0.8(滞后),额定电压为400V/230V,励磁方式为无刷,接线方式为三相四线制。
- 常用功率:指在可波动的负载情况下连续运行12小时的最大功率.如察是在24小时连续情况下使用,平均使用功率不可超过常用功率的80%。
- 备用功率:指机组的最大运行功率.在可波动的负载情况下及紧急的情况下.机组每年可运行的时限不能超过500小时.一次连续运行不超过2小时.禁止超载。
- 制造商保留更改型号、技术规格、颜色、设备和配件的权利,恕不另行通知。

- The power frequency of the generator set listed in this table is 50Hz(according to user requirements, 60Hz generator sets can also be provided), the power factor is 0.8 (lagging), the rated voltage is 400V/230V. The excitation mode of alternator is brushless. The wiring mode is three-phase four-wire system.
- Prime power: refers to the maximum power of continuous operation for 12 hours under variable load conditions. If it is used continuously for 24 hours, the average power used should not exceed 80% of the prime power.
- Standby power: refers to the maximum operating power. In the case of variable load and emergency situations, The generator set cannot be operated for more than 500 hours per year. Run continuously for no more than 2 hours at a time. Overload is not allowed.
- Manufacturer reserves the right to make changes in model, technical specifications, color, equipment and accessories without prior notice.

### 1.2 华丰—潍柴系列陆用柴油发电机组

#### Power HF-Weichai series land diesel generator sets

华丰—潍柴系列陆用柴油发电机组采用潍柴动力发动机，配套斯坦福、马拉松等中外名牌发电机组组合而成。潍柴动力集全球研发中心的技术力量，打造了全新一代陆用发电动力产品。

发动机排量:2.3L到87.5L

功率范围覆盖:18kW-3600kW

其发动机具有以下优势:

**\*经济性:**

重点优化60%~90%负荷率区间油耗，燃油消耗低。

**\*可靠性高:**

气缸体采用铸铁及网格结构，缸体强度高；曲轴采用高强度合金钢材料；设计寿命32000h

**\*环境适应性:**

高寒适应性强，-15℃时，发动机在不采取任何辅助措施情况下能直接起动；-35℃时，发动机采用进气预热可以顺利起动；高原适应性强，在海拔高度小于3000m时，发动机能输出额定功率；在海拔高度大于3000m时，发动机能可靠工作。



Power HF-weichai series land diesel generator sets are composed of Weichai power engine, and Stamford, Leroy Somer, Marathon and other famous domestic and foreign generators. Weichai Power gathered the technical strength of the global research and development center and created a new generation of land power generation products.

Engine displacement ranges from 2.3L to 87.5L

The engines power range covers 18kW-3600kW

The engine has the following advantages:

**\* Economy:**

Focus on optimizing fuel consumption between 60% and 90% load rate so they have low fuel consumption.

**\* High reliability:**

The cylinder block adopts cast iron and grid structure, and the cylinder block has high strength; The crankshaft is made of high strength alloy steel. Design life is upto 32000h.

**\* Environmental adaptability:**

High cold adaptability: under -15℃, the engine can start directly without taking any aid measures; Under -35℃, the engine can be started smoothly by inlet preheating; High altitude adapt-ability; when the altitude is less than 3000m, the engine can get rated power; At altitudes greater than 3000m, the engine can work reliably.

### 技术参数 Technical specifications

S/n	Genset model	Prime power		Standby power		Diesel Engine			
		kW	kVA	kW	kVA	Engine Model	Make	Power (kW)	Speed r/min
1	HF-18WX	18	22.5	20	24.75	WP2.3D25E200	Weichai	23	1500
2	HF-25WX	25	31	27.5	34	WP2.3D33E200	Weichai	30	1500
3	HF-30WX	30	37.5	33	41.25	WP2.3D40E200	Weichai	36	1500
4	HF-36WX	36	45	40	49.5	WP2.3D48E200	Weichai	44	1500
5	HF-50WX	50	62.5	55	68.75	WP4.1D66E200	Weichai	60	1500
6	HF-64WX	64	80	70	88	WP4.1D80E200	Weichai	72	1500
7	HF-80WX	80	100	88	110	WP4.1D100E200	Weichai	90	1500
8	HF-100WX	100	125	120	137.5	WP6D132E200	Weichai	120	1500
9	HF-120WX	120	150	132	165	WP6D152E200	Weichai	138	1500
10	HF-136WX	136	170	150	187	WP6D167E200	Weichai	150	1500
11	HF-160WX	160	200	176	220	WP10D200E200	Weichai	182	1500
12	HF-184WX	184	230	200	253	WP10D238E200	Weichai	216	1500
13	HF-200WX	200	250	220	275	WP10D264E200	Weichai	240	1500
14	HF-250WX	250	312.5	280	343.75	WP10D320E200	Weichai	291	1500
15	HF-300WX	300	375	320	412.5	WP13D385E200	Weichai	350	1500
16	HF-320WX	320	400	350	440	WP13D405E200	Weichai	368	1500
17	HF-350WX	350	437.5	400	481.25	WP13D440E310	Weichai	392	1500
18	HF-400WX	400	500	440	550	WP13D490E310	Weichai	450	1500
19	HF-460WX	460	575	520	632.5	6M33D572E200	Baudouin	520	1500
20	HF-520WX	520	650	580	715	6M33D633E200	Baudouin	575	1500
21	HF-540WX	540	675	600	742.5	6M33D670E200	Baudouin	610	1500
22	HF-600WX	600	750	660	825	6M33D725E310	Baudouin	675	1500
23	HF-640WX	640	800	700	880	12M26D792E200	Baudouin	720	1500
24	HF-720WX	720	900	800	990	12M26D902E200	Baudouin	820	1500
25	HF-800WX	800	1000	880	1100	12M26D968E200	Baudouin	880	1500
26	HF-900WX	900	1125	1000	1237.5	12M33D1108E200	Baudouin	1007	1500
27	HF-1000WX	1000	1250	1100	1375	12M33D1210E200	Baudouin	1100	1500
28	HF-1100WX	1100	1375	1200	1512.5	12M33D1320E200	Baudouin	1200	1500
29	HF-1200WX	1200	1500	1320	1650	12M33D1450E310	Baudouin	1350	1500
30	HF-1250WX	1250	1562.5	1400	1718.75	16M33D1530E310	Baudouin	1390	1500
31	HF-1300WX	1300	1625	1440	1787.5	16M33D1580E310	Baudouin	1430	1500
32	HF-1400WX	1400	1750	1520	1925	16M33D1680E310	Baudouin	1530	1500
33	HF-1500WX	1500	1875	1650	2062.5	16M33D1800E310	Baudouin	1680	1500
34	HF-1600WX	1600	2000	1800	2200	16M33D1980E310	Baudouin	1800	1500
35	HF-1600WX	1600	2000	1800	2200	20M33D2020E310	Baudouin	1850	1500
36	HF-1800WX	1800	2250	2000	2475	20M33D2210E310	Baudouin	2010	1500
37	HF-1800WX	1800	2250	2000	2475	12M55D2210E310	Baudouin	1985	1500
38	HF-2000WX	2000	2500	2200	2750	12M55D2450E310	Baudouin	2200	1500
39	HF-2200WX	2200	2750	2420	3025	16M55D2750E310	Baudouin	2500	1500
40	HF-2400WX	2400	3000	2640	3300	16M55D2900E310	Baudouin	2646	1500

• 本表所列机组发电频率均为50Hz(根据用户要求,也可提供60Hz发电机组),功率因数为0.8(滞后),额定电压为400V/230V,励磁方式为无刷,接线方式为三相四线制。

• 常用功率:指在可波动的负载情况下连续运行12小时的最大功率。如是在24小时连续情况下使用,平均使用功率不可超过常用功率的80%。

• 备用功率:指机组的最大运行功率。在可波动的负载情况下及紧急的情况下,机组每年可运行的时限不能超过500小时。一次连续运行不超过2小时,禁止超载。

• 制造商保留更改型号、技术规格、颜色、设备和配件的权利,恕不另行通知。

• The power frequency of the generator set listed in this table is 50Hz(according to user requirements, 60Hz generator sets can also be provided). the power factor is 0.8 (lagging). the rated voltage is 400V/230V. The excitation mode of alternator is brushless.

The wiring mode is three-phase four-wire system.

• Prime power: refers to the maximum power of continuous operation for 12 hours under variable load conditions. If it is used continuously for 24 hours, the average power used should not exceed 80% of the prime power.

• Standby power: refers to the maximum operating power. In the case of variable load and emergency situations, The generator set cannot be operated for more than 500 hours per year. Run continuously for no more than 2 hours at a time. Overload is not allowed.

• Manufacturer reserves the right to make changes in model, technical specifications, color, equipment and accessories without prior notice.



### 1.3 华丰—玉柴系列陆用柴油发电机组

#### Power HF-Yuchai series land diesel generator sets

华丰—玉柴系列陆用柴油发电机组采用广西玉柴动力股份有限公司的发动机,配套斯坦福、马拉松等中外名牌发电机组而成。

玉柴动力发动机是消化吸收美国福特公司咨询成果研制而成,采用整体锻钢曲轴、合金铸铁的机体与气缸盖,体积小、重量轻,可靠性高,大修期大于12000小时:燃油消耗率和润滑油消耗率远远优于国内同类产品。

具有动力强劲、安全可靠、动小、噪音低、油耗低、排放低、适配性强等特点。



Power HF-yuchai series land diesel generator sets are made of engines from Guangxi Yuchai Power Co.,LTD., and are combined with famous domestic and foreign generators such as Stanford , Leroy Somer and Marathon etc.

Yuchai power engine absorbed the consulting results of the United States Ford Company , using the whole forged steel crankshaft, alloy cast iron body and cylinder head. They have small size, light weight,high reliability. Their overhaul period is more than 12,000 hours: fuel consumption and lubricating oil consumption rate is far better than domestic products. It has the characteristics of strong power, good safety and high reliability, low vibration, low noise, low fuel consumption, low emission and strong adaptability.

### 技术参数 Technical specifications

S/n	Genset model	Prime power		Standby power		Diesel Engine			
		kW	kVA	kW	kVA	Engine Model	Make	Power (kW)	Speed r/min
1	HF-32YX	32	40	35.2	44	YC4D60-D21	Yuchai	40	1500
2	HF-50YX	50	62.5	55	68.75	YC4D90Z-D21	Yuchai	60	1500
3	HF-60YX	60	75	66	82.5	YC4A100Z-D20	Yuchai	70	1500
4	HF-90YX	90	112.5	99	123.75	YC4A140L-D25	Yuchai	100	1500
5	HF-100YX	100	125	110	137.5	YC6B180L-D20	Yuchai	120	1500
6	HF-120YX	120	150	132	165	YC6B205L-D20	Yuchai	138	1500
7	HF-128YX	128	160	140.8	176	YC6A230L-D20	Yuchai	155	1500
8	HF-150YX	150	188	165	206.8	YC6A245L-D21	Yuchai	165	1500
9	HF-200YX	200	250	220	275	YC6MK350L-D20	Yuchai	235	1500
10	HF-250YX	250	313	275	344.3	YC6MK420L-D20	Yuchai	281	1500
11	HF-300YX	300	375	330	412.5	YC6MJ480L-D20	Yuchai	321	1500
12	HF-320YX	320	400	352	440	YC6MJ500L-D21	Yuchai	334	1500
13	HF-360YX	360	450	396	495	YC6T600L-D22	Yuchai	401	1500
14	HF-400YX	400	500	440	550	YC6T660L-D20	Yuchai	441	1500
15	HF-480YX	480	600	528	660	YC6TD780-D31	Yuchai	520	1500
16	HF-500YX	500	625	550	687.5	YC6TD840-D31	Yuchai	561	1500
17	HF-540YX	540	675	594	742.5	YC6TD900-D31	Yuchai	605	1500
18	HF-600YX	600	750	660	825	YC6TD1000-D30	Yuchai	668	1500
19	HF-640YX	640	800	704	880	YC6TD1100-D30	Yuchai	741	1500
20	HF-728YX	728	910	800.8	1001	YC6C1220-D31	Yuchai	815	1500
21	HF-800YX	800	1000	880	1100	YC6C1320-D31	Yuchai	880	1500
22	HF-904YX	904	1130	994.4	1243	YC6C1520-D31	Yuchai	1016	1500
23	HF-1000YX	1000	1250	1100	1375	YC6C1660-D31	Yuchai	1110	1500
24	HF-1100YX	1100	1375	1210	1512.5	YC12VTD1830-D30	Yuchai	1220	1500
25	HF-1200YX	1200	1500	1320	1650	YC12VTD2000-D30	Yuchai	1345	1500
26	HF-1320YX	1320	1650	1452	1815	YC12VC2070-D31	Yuchai	1380	1500
27	HF-1400YX	1400	1750	1540	1925	YC12VC2270-D31	Yuchai	1520	1500
28	HF-1500YX	1500	1875	1650	2062.5	YC12VC2510-D31	Yuchai	1680	1500
29	HF-1600YX	1600	2000	1760	2200	YC12VC2700-D31	Yuchai	1805	1500
30	HF-1800YX	1800	2250	1980	2475	YC12VC3000-D30	Yuchai	2005	1500

•本表所列机组发电频率均为50Hz(根据用户要求,也可提供60Hz发电机组),功率因数为0.8(滞后),额定电压为400V/230V,励磁方式为无刷,接线方式为三相四线制。

•常用功率:指在可波动的负载情况下连续运行12小时的最大功率,如是在24小时连续情况下使用,平均使用功率不可超过常用功率的80%。

•备用功率:指机组的最大运行功率,在可波动的负载情况下及紧急的情况下,机组每年可运行的时限不能超过500小时,一次连续运行不超过2小时,禁止超载。

•制造商保留更改型号、技术规格、颜色、设备和配件的权利,恕不另行通知。

•The power frequency of the generator set listed in this table is 50Hz(according to user requirements, 60Hz generator sets can also be provided), the power factor is 0.8 (lagging), the rated voltage is 400V/230V. The excitation mode of alternator is brushless.

The wiring mode is three-phase four-wire system.

•Prime power: refers to the maximum power of continuous operation for 12 hours under variable load conditions. If it is used continuously for 24 hours, the average power used should not exceed 80% of the prime power.

•Standby power: refers to the maximum operating power. In the case of variable load and emergency situations, The generator set cannot be operated for more than 500 hours per year. Run continuously for no more than 2 hours at a time Overload is not allowed.

•Manufacturer reserves the right to make changes in model, technical specifications, color, equipment and accessories without prior notice.

### 1.4 华丰—康明斯系列陆用柴油发电机组

Power HF-CUMMINS series land diesel generator set

华丰—康明斯(CUMMINS)系列陆用柴油发电机组采用中美合资康明斯B、C、L、N、K发动机(或原装进口),配套斯坦福、马拉松等中外名牌发电机组组合而成。

康明斯发动机是世界著名品牌产品,其发动机的可靠性、耐久性和燃油经济性一直居于业内领先地位。



Power HF - CUMMINS series of land use diesel generator sets adopt B, C, L, N, K engines from Sino-US joint venture Cummins or originally imported engines and Stamford, Leroy Somer, Marathon or other domestic and foreign famous brand generators.

Cummins engine is a world famous product. its engine reliability, durability and fuel economy in the industry is always in the industry's leading position.

### 技术参数 Technical specifications

S/n	Genset model	Prime power		Standby power		Diesel Engine			
		kW	kVA	kW	kVA	Engine Model	Make	Power (kW)	Speed r/min
1	HF-12CX	12	15	13.2	16.5	4B3.9-G11	Cummins	20	1500
2	HF-15KX	15	18.8	16.5	20.6	4B3.9-G1	Cummins	24	1500
3	HF-20KX	20	25	22	27.5	4B3.9-G2	Cummins	24	1500
4	HF-24KX	24	30	26.4	33	4B3.9-G12	Cummins	27	1500
5	HF-32KX	32	40	35.2	44	4BT3.9-G1	Cummins	36	1500
6	HF-30CX	30	37.5	33	41.3	4BT3.9-G1	Cummins	36	1500
7	HF-40CX	40	50	44	55	4BTA3.9-G2	Cummins	50	1500
8	HF-50CX	50	62.5	55	68.8	4BTA3.9-G2	Cummins	58	1500
9	HF-64CX	64	80	70.4	88	4BTA3.9-G11	Cummins	70	1500
10	HF-75CX	75	98.3	82.5	103.1	4BTA3.9-G13	Cummins	87	1500
11	HF-80CX	80	100	88	110	6BT5.9-G2	Cummins	96	1500
12	HF-90CX	90	112.5	99	123.8	6BTA5.9-G2	Cummins	106	1500
13	HF-100CX	100	125	110	137.5	6BTAA5.9-G2	Cummins	120	1500
14	HF-120CX	120	150	132	165	6BTAA5.9-G12	Cummins	140	1500
15	HF-150CX	150	187.5	165	206.3	6CTA8.3-G1	Cummins	163	1500
16	HF-160CX	160	200	176	220	6CTAA8.3-G2	Cummins	183	1500
17	HF-200CX	200	250	220	275	6LTAA8.9-G2	Cummins	220	1500
18	HF-250CX	250	312.5	275	343.8	6LTAA9.5-G1	Cummins	290	1500
19	HF-300CX	300	375	330	412.5	6ZTAA13-G3	Cummins	340	1500
20	HF-320CX	320	400	352	440	6ZTAA13-G2	Cummins	390	1500
21	HF-360CX	360	450	396	495	6ZTAA13-G4	Cummins	400	1500
22	HF-400CX	400	500	440	550	QSZ13-G3	Cummins	450	1500
23	HF-450kW	450	562.5	495	619	KTAA19-G6	Cummins	520	1500
24	HF-500kW	500	625	550	688	KT38-G	Cummins	560	1500
25	HF-600kW	600	750	660	825	KTA38-G2	Cummins	664	1500
26	HF-640kW	640	800	704	880	KTA38-G2B	Cummins	711	1500
27	HF-728kW	728	910	800.8	1001	KTA38-G2A	Cummins	813	1500
28	HF-800kW	800	1000	880	1100	KTA38-G5	Cummins	880	1500
29	HF-1000kW	1000	1250	1100	1375	KTA50-G3	Cummins	1116	1500
30	HF-1100kW	1100	1375	1210	1513	KTA50-G8	Cummins	1200	1500
31	HF-1200kW	1200	1500	1320	1650	KTA50-G8E	Cummins	1320	1500
32	HF-1320kW	1320	1650	1452	1815	KTA50-G15X	Cummins	1491	1500
33	HF-1500kW	1500	1875	1650	2063	KTA50-G16A	Cummins	1650	1500
34	HF-1600kW	1600	2000	1760	2200	KTA50-G16B	Cummins	1760	1500

• 本表所列机组发电频率均为50Hz(根据用户要求,也可提供60Hz发电机组),功率因数为0.8(滞后),额定电压为400V/230V,励磁方式为无刷,接线方式为三相四线制。

• 常用功率:指在可波动的负载情况下连续运行12小时的最大功率,如是在24小时连续情况下使用,平均使用功率不可超过常用功率的80%。

• 备用功率:指机组的最大运行功率,在可波动的负载情况下及紧急的情况下,机组每年可运行的时限不能超过500小时,一次连续运行不超过2小时,禁止超载。

• 制造商保留更改型号、技术规格、颜色、设备和配件的权利,恕不另行通知。

• The power frequency of the generator set listed in this table is 50Hz(according to user requirements, 60Hz generator sets can also be provided), the power factor is 0.8 (lagging), the rated voltage is 400V/230V. The excitation mode of alternator is brushless. The wiring mode is three-phase four-wire system.

• Prime power: refers to the maximum power of continuous operation for 12 hours under variable load conditions. If it is used continuously for 24 hours, the average power used should not exceed 80% of the prime power.

• Standby power: refers to the maximum operating power. In the case of variable load and emergency situations, The generator set cannot be operated for more than 500 hours per year. Run continuously for no more than 2 hours at a time. Overload is not allowed.

• Manufacturer reserves the right to make changes in model, technical specifications, color, equipment and accessories without prior notice.

### 1.5 华丰—珀金斯系列陆用柴油发电机组

#### Power HF-Pekins series land diesel generator set

发动机选用珀金斯(Perkins)又称劳斯莱斯系列柴油机,具有优异的冷启动性能,采用先进技术优化燃烧过程,低燃油消耗、低噪音、排放达到德国TALuft标准。

发电机选用斯坦福、马拉松等世界名牌无刷发电机,性能先进,运行稳定可靠。



Adopt Perkins, also known as Rolls-Royce series diesel engine, having excellent cold start performance. they adopted advanced technology to optimize the combustion process. They are low fuel consumption, low noise and emissions meets the German TALuft standard. Stanford, Leroy Somer, Marathon and other domestic and foreign famous brands of alternators are selected.

### 技术参数 Technical specifications

S/n	Genset model	Prime power		Standby power		Diesel Engine			
		kW	kVA	kW	kVA	Engine Model	Make	Power (kW)	Speed r/min
1	HF-10PX	10	12.5	11	13.8	403D-15G	Perkins	12	1500
2	HF-12PX	12	15	13.2	16.5	403A-15G2	Perkins	13.7	1500
3	HF-16PX	16	20	18	22	404D-22G	Perkins	18.4	1500
4	HF-24PX	24	30	26	33	1103A-33G	Perkins	31	1500
5	HF-36PX	36	45	40	49.5	1103A-33TG1	Perkins	41.3	1500
6	HF-48PX	48	60	53	66	1103A-33TG2	Perkins	53.8	1500
7	HF-64PX	64	80	70	88	1104A-44TG2	Perkins	58.4	1500
8	HF-80PX	80	100	88	110	1104C-44TAG2	Perkins	90.1	1500
9	HF-100PX	100	125	110	137.5	1106A-70TG1	Perkins	118.3	1500
10	HF-120PX	120	150	132	165	1106A-70TAG2	Perkins	131	1500
11	HF-144PX	144	180	158	198	1106A-70TAG3	Perkins	157.7	1500
12	HF-160PX	160	200	176	220	1106A-70TAG4	Perkins	173.9	1500
13	HF-180PX	180	225	198	247.5	1206D-E70TTAG2	Perkins	226.8	1500
14	HF-200PX	200	250	220	275	1206A-E70TTAG3	Perkins	248.5	1500
15	HF-200PX	200	250	220	275	1506A-E88TAG3 L	Perkins	245	1500
16	HF-240PX	240	300	264	330	1506A-E88TAG5 L	Perkins	293	1500
17	HF-280PX	280	350	308	385	2206C-E13TAG2 L	Perkins	305	1500
18	HF-320PX	320	400	352	440	2206C-E13TAG3 L	Perkins	349	1500
19	HF-360PX	360	450	396	495	2506C-E15TAG1 L	Perkins	434	1500
20	HF-400PX	400	500	440	550	2506C-E15TAG2 L	Perkins	435	1500
21	HF-450PX	450	562.5	495	618.75	2806C-E18TAG1A L	Perkins	514	1500
22	HF-520PX	520	650	572	715	2806A-E18TAG2 L	Perkins	565	1500
23	HF-600PX	600	750	660	825	4006-23TAG2A	Perkins	658	1500
24	HF-640PX	640	800	704	880	4006-23TAG3A	Perkins	705	1500
25	HF-720PX	720	900	792	990	4008TAG1A	Perkins	805	1500
26	HF-800PX	800	1000	880	1100	4008TAG2A	Perkins	899	1500
27	HF-900PX	900	1125	990	1237.5	4008-30TAG3	Perkins	1105	1500
28	HF-1000PX	1000	1250	1100	1375	4012-46TWG2A	Perkins	1113	1500
29	HF-1200PX	1200	1500	1320	1650	4012-46TAG2A	Perkins	1331	1500
30	HF-1320PX	1320	1650	1452	1815	4012-46TAG3A	Perkins	1500	1500
31	HF-1440PX	1440	1800	1584	1980	4016TAG1A	Perkins	1588	1500
32	HF-1600PX	1600	2000	1760	2200	4016TAG2A	Perkins	1766	1500
33	HF-1800PX	1800	2250	1980	2475	4016-61TRG3	Perkins	1975	1500

• 本表所列机组发电频率均为50HZ(根据用户要求,也可提供60HZ发电机组),功率因数为0.8(滞后),额定电压为400V/230V,励磁方式为无刷,接线方式为三相四线制。  
 • 常用功率:指在可波动的负载情况下连续运行12小时的最大功率。如是在24小时连续情况下使用,平均使用功率不可超过常用功率的80%。  
 • 备用功率:指机组的最大运行功率。在可波动的负载情况下及紧急的情况下,机组每年可运行的时限不能超过500小时,一次连续运行不超过2小时,禁止超载。  
 • 制造商保留更改型号、技术规格、颜色、设备和配件的权利,恕不另行通知。  
 • The power frequency of the generator set listed in this table is 50Hz(according to user requirements, 60Hz generator sets can also be provided), the power factor is 0.8 (lagging), the rated voltage is 400V/230V. The excitation mode of alternator is brushless.  
 • The wiring mode is three-phase four-wire system.  
 • Prime power: refers to the maximum power of continuous operation for 12 hours under variable load conditions. If it is used continuously for 24 hours, the average power used should not exceed 80% of the prime power.  
 • Standby power: refers to the maximum operating power. In the case of variable load and emergency situations, The generator set cannot be operated for more than 500 hours per year. Run continuously for no more than 2 hours at a time. Overload is not allowed.  
 • Manufacturer reserves the right to make changes in model, technical specifications, color, equipment and accessories without prior notice.

engine (original import), and Stamford,

## 1.6 华丰—洋马系列陆用柴油发电机组

### Power HF-Yanmar series land diesel generator set

华丰—洋马系列陆用柴油发电机组采用洋马发动机 (YANMAR) (原装进口), 配套斯坦福、马拉松等中外名牌发电机组而成。

洋马株式会社 (Yanmar) 是日本一家柴油发动机制造商, 其发动机被广泛应用于海轮、建筑设备、农用设备和发电机等领域。该发动机是世界公认的柴油发动机品牌, 不仅有高质量的产品和优质的服务, 有公认的市场竞争优势, 还以其绿色环保, 致力于最先进的节油技术的开发而闻名于世。

Power HF-Yanmar series land diesel generator sets adopt YANMAR engine (original import) and Stamford, Marathon or other domestic and foreign famous brand of alternators.

Yanmar is a Japanese manufacturer of diesel engines widely used in Marine vessels, construction equipment, agricultural equipment and generators. The engine is the world's recognized diesel engine brand. Not only has high quality products and excellent service and a recognized market competitive advantage, but also is known for its green environmental protection and commitment to the development of the most advanced fuel saving technology.



## 技术参数 Technical specifications

S/n	Genset model	Prime power		Standby power		Diesel Engine			
		kW	kVA	kW	kVA	Engine Model	Make	Power (kW)	Speed r/min
1	HF-16MX	16	20			4TNV84T-GGE	Yanmar	19.1(26)	1500
2	HF-12MX	12	15			4TNV88-GGE	Yanmar	16.4(22.3)	1500
3	HF-24MX	24	30			4TNV98-GGE	Yanmar	30.7(41.7)	1500
4	HF-30MX	30	37.5			4TNV98T-GGE	Yanmar	37.7(51.3)	1500
5	HF-36MX	36	45			4TNV106-GGE	Yanmar	44.9(61)	1500
6	HF-40MX	40	50			4TNV106T-GGE	Yanmar	50.9(69.2)	1500

• 本表所列机组发电频率均为50HZ(根据用户要求, 也可提供60HZ发电机组), 功率因数为0.8(滞后), 额定电压为400V/230V, 励磁方式为无刷, 接线方式为三相四线制。  
 • 常用功率:指在可波动的负载情况下连续运行12小时的最大功率。如是在24小时连续情况下使用, 平均使用功率不可超过常用功率的80%。  
 • 备用功率:指机组的最大运行功率。在可波动的负载情况下及紧急的情况下, 机组每年可运行的时限不能超过500小时。一次连续运行不超过2小时, 禁止超载。  
 • 制造商保留更改型号、技术规格、颜色、设备和配件的权利, 恕不另行通知。  
 • The power frequency of the generator set listed in this table is 50Hz(according to user requirements, 60Hz generator sets can also be provided), the power factor is 0.8 (lagging), the rated voltage is 400V/230V. The excitation mode of alternator is brushless.  
 • The wiring mode is three-phase four-wire system.  
 • Prime power: refers to the maximum power of continuous operation for 12 hours under variable load conditions. If it is used continuously for 24 hours, the average power used should not exceed 80% of the prime power.  
 • Standby power: refers to the maximum operating power. In the case of variable load and emergency situations, The generator set cannot be operated for more than 500 hours per year. Run continuously for no more than 2 hours at a time. Overload is not allowed.  
 • Manufacturer reserves the right to make changes in model, technical specifications, color, equipment and accessories without prior notice.

## 2. 华丰船用柴油发电机组

### Power HF Marine diesel generator set

华丰系列船用柴油发电机组是严格按照国际各大船级社标准, 针对各种船舶类型制造出专业的船用柴油发电机组。

- ★ 结构紧凑、综合成本低、功率大
- ★ 操作维修简单
- ★ 动力及可靠性好
- ★ 燃油经济性好、热效率高

标准配置: 发动机、发电机、免维护蓄电池、消音器、钢式底架

可选配置: 输出断路器、全自动控制系统、水套加热器、自动并机控制系统、船用消声器



Power HF series Marine diesel generator sets are professionally produced in strict accordance with the international standards of major classification society in consideration of various ship types.

- ★ Compact structure, low operation cost, high power
- ★ Simple operation and maintenance
- ★ Good power and reliability
- ★ Good fuel economy, high thermal efficiency

Standard: Engine, generator, maintenance-free battery, silencer, steel base frame

Optional configuration: output circuit breaker, automatic control system, jacket heater, automatic parallel control system, Marine muffler

## 技术参数 Technical specifications

S/n	Genset model	Prime power		Diesel Engine			
		kW	kVA	Engine Model	Make	Power (kW)	Speed r/min
1	HF-20KX-M	20	25	495D4-2	Power HF	26.5/36/1500	1500
2	HF-24KX-M	24	30	K4100D4-3	Power HF	30/1500	1500
3	HF-32RX-M	32	40	R4105D4-3	Power HF	40/54/1500	1500
4	HF-50RX-M	50	62.5	R4105ZD4-2	Power HF	56/76/1500	1500
5	HF-50RX-M	50	62.5	R6105D8	Power HF	58/79/1500	1500
6	HF-60RX-M	60	75	R6105ZD7	Power HF	75/102/1500	1500
7	HF-80RX-M	80	100	R6105ZLD4	Power HF	100/136/1500	1500
8	HF-90RX-M	90	112.5	R6105AZLD4	Power HF	110/150/1500	1500
9	HF-100RX-M	100	125	R6105IZLD4	Power HF	120/163/1500	1500

• 本表所列机组发电频率均为50HZ(根据用户要求, 也可提供60HZ发电机组), 功率因数为0.8(滞后), 额定电压为400V/230V, 励磁方式为无刷, 接线方式为三相四线制。  
 • 常用功率:指在可波动的负载情况下连续运行12小时的最大功率。如是在24小时连续情况下使用, 平均使用功率不可超过常用功率的80%。  
 • 备用功率:指机组的最大运行功率。在可波动的负载情况下及紧急的情况下, 机组每年可运行的时限不能超过500小时。一次连续运行不超过2小时, 禁止超载。  
 • 制造商保留更改型号、技术规格、颜色、设备和配件的权利, 恕不另行通知。  
 • The power frequency of the generator set listed in this table is 50Hz(according to user requirements, 60Hz generator sets can also be provided), the power factor is 0.8 (lagging), the rated voltage is 400V/230V. The excitation mode of alternator is brushless.  
 • The wiring mode is three-phase four-wire system.  
 • Prime power: refers to the maximum power of continuous operation for 12 hours under variable load conditions. If it is used continuously for 24 hours, the average power used should not exceed 80% of the prime power.  
 • Standby power: refers to the maximum operating power. In the case of variable load and emergency situations, The generator set cannot be operated for more than 500 hours per year. Run continuously for no more than 2 hours at a time. Overload is not allowed.  
 • Manufacturer reserves the right to make changes in model, technical specifications, color, equipment and accessories without prior notice.

### 3. 华丰燃气发电机组

Power HF gas generator set

华丰动力可提供12kW-1400kW燃气系列发电机组。华丰燃气发电机组具有输出功率范围广,启动和运行可靠高、发电质量好、重量轻、体积小、维护简单、低频噪声小等优点。

Power HF can provide 12kW-1400kW gas series generator sets. Power HF gas generator set has the advantages of wide output power range, reliable start-up and operation, good power generation quality, light weight, small size, simple maintenance, low frequency noise and so on.



### 技术参数 Technical specifications

S/n	Genset model	Prime power		Diesel Engine			
		kW	kVA	Engine Model	Make	Power (kW)	Speed r/min
1	HF-12RX-Q	12	15	PHF3017NGD	Power HF	17	1500
2	HF-24RX-Q	24	30	PHF4032NGD	Power HF	32	1500
3	HF-36RX-Q	36	45	PHF4045NGD	Power HF	45	1500
4	HF-50RX-Q	50	62.5	PHF4056NGD	Power HF	56	1500
5	HF-80RX-Q	80	100	PHF6089NGD	Power HF	89	1500
6	HF-100RX-Q	100	125	PHF6111NGD	Power HF	111	1500
7	HF-150WX-Q	150	187.5	WP10D200E300NG	Weichai	182	1500
8	HF-250WX-Q	250	312.5	WP13D317E300NG	Weichai	288	1500
9	HF-400WX-Q	400	500	6M33D450E310NG	Baudouin	450	1500
10	HF-500WX-Q	500	625	12M26D605E300NG	Baudouin	550	1500
11	HF-800WX-Q	800	1000	12M33D900E310NG	Baudouin	900	1500
12	HF-1100WX-Q	1100*	1375	16M33D1280NG10	Baudouin	1280	1500
13	HF-1400WX-Q	1400*	1750	12M55D1588A0NG	Baudouin	1588	1500

\*本表所列机组发电频率均为50Hz(根据用户要求,也可提供60Hz发电机组),功率因数为0.8(滞后),额定电压为400V/230V,励磁方式为无刷,接线方式为三相四线制。  
 \*常用功率:指在可波动的负载情况下连续运行12小时的最大功率。如是在24小时连续情况下使用,平均使用功率不可超过常用功率的80%  
 \*备用功率:指机组的最大运行功率。在可波动的负载情况下及紧急的情况下,机组每年可运行的时限不能超过500小时,一次连续运行不超过2小时,禁止超载。  
 \*制造商保留更改型号、技术规格、颜色、设备和配件的权利,恕不另行通知。  
 \*The power frequency of the units listed in this table is 50Hz(according to user requirements, 60Hz generator sets can also be provided), the power factor is 0.8 (lag), the rated voltage is 400V/230V, the excitation mode is brushless, and the wiring mode is three-phase four-wire system.  
 \*Common power: refers to the maximum power of continuous operation for 12 hours under fluctuating load conditions. If it is used continuously for 24 hours, the average power used should not exceed 80% of the common power.  
 \*Standby power: refers to the maximum operating power of the unit. In the case of fluctuating loads and emergency situations, The unit cannot be operated for more than 500 hours per year. Run continuously for no more than 2 hours at a time. Overload is prohibited.  
 \*Manufacturer reserves the right to make changes in model, technical specifications, color, equipment and accessories without prior notice.

### 4. 华丰混合能源发电机组

Power HF hybrid power Cube

华丰混合动力供电系统由柴油机发电机组、储能单元、整流控制单元、光伏、风电等组成;该系统采用先进的控制理念、优化控制逻辑,大幅度降低系统运行成本、提高产品运行寿命;先进的动环监控系统,可在服务器端远程监控系统运行的各项参数、汇总各项运行指标,及时有效的发现系统运行期间出现的各种问题,降低运行风险;超长保养间隔时间,有效降低了维护成本。

Power HF hybrid power cube is composed of diesel generator set, energy storage unit, rectifier control unit, photovoltaic, wind power, etc. The system adopts advanced control concept and optimized control logic to greatly reduce system operating cost and increase product operating life. The advanced FSU can remotely monitor the parameters of the system operation at the server side and summarize the operation parameters and timely and effectively discover various problems during the system operation and reduce the operation risk; The long maintenance interval effectively reduces the maintenance cost.

#### 一体式结构: ▶

该系列产品具有集成度高、占地面积小等优点;

Integrated cube:  
It has the advantages of high integration, small footprint, easy installation, plug-and-play, etc.



#### ◀ 分体式结构:

该系列产品具有灵活组合性、维修及保养操作方便、运输方便等优点;

Split structure:  
This series of products have the advantages of flexible combination, easy maintenance and operation, convenient transportation, etc.



# 三、华丰定制化电源解决方案及应用

Power HF customized power supply solutions and applications



## 3.1 支持深度定制, 满足各类应用场景的特定需求 Supports deep customization to meet the specific requirements

秉承在发电领域30多年的专业经验, 华丰动力为客户提供优质的发电、转换和控制技术, 致力于满足客户在连续发电、常载、调峰、备载、热电联产和整套电站交钥匙工程等领域的电力需求。同时还提供包括长期运营、协议维护、交钥匙工程以及临时电源在内的全方位服务和电力解决方案。

华丰动力发电产品广泛用于数据中心、通讯、能源、矿产、交通运输、商业建筑、医院、工厂、市政、发电厂、污水处理厂、海外总承包等多元化的领域, 是发电领域的定制专家。

With more than 30 years of professional experience in power generation, Power HF provides customers with high-quality generation, transferring and control technologies, and is committed to meeting customers' power needs in the fields of continuous running, normal load, peak load, back-up, CHP and turnkey power plant projects. It also offers a full range of services and power solutions including long-term operations, contractual maintenance, turnkey engineering, and temporary power supplies.

Power HF power generation products are widely used in IDC, communications, energy, mining, transportation, commercial buildings, hospitals, factories, municipal, power plants, sewage treatment plants, overseas general contracting and other diversified fields and is a customized expert in the field of power generation.

始于1920  
SINCE  
百年华丰 传承动力

IDC 数据中心

## 3.2 典型产品案例及应用 Typical products and application

### 3.2.1 数据中心 IDC

机组功率(power): 1800kW-2200kW

产品特点(product features):

- 1. 响应时间短  
Short response time
- 2. 高可靠性  
High reliability  
大修期长达32000小时  
Overhaul period up to 32000 hours
- 3. 突载能力强  
Strong sudden load capacity  
突加100%不停机  
Non-stop on 100% sudden load
- 4. 并机性能与并机兼容性好  
Good Paralleling performance and Paralleling compatibility

发动机(Engine): ◎系列(Series): 博杜安M55系列(Baudouin M55 series)

◎功率(Power): 1986kW~2600kW



△中国联通华北基地机组 China Unicom North China Base



△中国联通呼和浩特云数据中心 China Unicom Hohhot cloud data center

### 3.2.2 油田

适应性设计 Adaptive design:

- ★ 防风沙、防雨雪, 满足各种气候条件, 如沙漠型空滤系统的选用
- ★ 耐高、低温: 高温 50°C, 低温 -30°C 特殊机组可选
- ★ 模块化、一体式设计便于运输和安装, 如箱式机组的使用
- ★ 容量安全冗余设计充足, 满足突加、突减要求

功率 Power: 10kVA-3000kVA

- ★ Anti-sand, anti-rain and snow, to meet various climatic conditions, such as desert type air filtration system selection
- ★ High and low temperature resistance: high temperature 50°C, low temperature -30°C optional
- ★ Modular, integrated design is easy to transport and install, such as the use of container generator sets
- ★ Capacity redundancy design sufficient to meet the requirements of sudden load

产品系列 Product series:

- ◎ 华丰系列 Power HF series: 10kVA-150kVA
- ◎ 潍柴系列 Weichai series: 150kVA-3000kVA

特点 Features:

燃油耗低

Low fuel consumption

可靠性高、耐久性好

High reliability, good durability

运维成本低

Low operation and maintenance cost



### 3.2.3 通信基站 BTS

适应性设计 Adaptive design:

- ★ 高可靠性  
High reliability
- ★ 维护周期长: 1000h 免维护可选  
Long maintenance period: 1000h maintenance-free optional
- ★ 大修期长: 大于 10000h  
Overhaul period: more than 10000h
- ★ 噪声低: 65dB@1m 超静音可选  
Low noise: 65dB@1m ultra-quiet optional
- ★ 智能化控制: 通过 GPRS、网口等接入传输设备, 实现“三遥”  
Intelligent control: Access transmission equipment through GPRS, network ports, etc."

功率 Power:

- ★ 交流 AC: 10kVA-30kVA 电压 voltage: 230V/400V
- ★ 直流 DC: 1.5kW-4.5kW 电压 voltage: 48V DC

产品系列 Product series:

- ★ 华丰 R2105、R3105 系列/珀金斯系列  
PHF 2105/3105 and Perkins series

通信交流电源机组特点:

- ★ 可靠性、耐久性高, 大修期大于 10000h
- ★ 维护周期长, 1000h 免维护可选
- ★ 噪声低, 65dB@1m 超静音可选
- ★ 智能化水平高, 采用 Comap 或 Deep sea 控制器
- ★ 报警输出接口丰富, 方便远程监控
- ★ IP 等级高, 防雨性能好

AC generator set features:

- ★ High reliability and durability, overhaul period is more than 10000h
- ★ Long maintenance period, 1000h maintenance-free optional
- ★ Low noise, 65dB@1m ultra-quiet optional
- ★ High level of intelligence, Comap or Deep sea controller
- ★ Rich alarm output interface, convenient remote monitoring
- ★ High IP grade, good rain performance

通信直流电源机组特点:

- ★ 优化控制逻辑, 节省燃油耗最高达 65%
- ★ 即插即用, 安装调试简便
- ★ 体积小, 占地面积小
- ★ 机组运行时间短, 维护周期大大延长
- ★ 可配置远程监控, 实现“三遥”功能

DC generator set features:

- ★ Optimized control logic, saving fuel consumption up to 65%
- ★ Plug and play, easy to install and debug
- ★ Small size, small footprint
- ★ The operation time of the unit is short, and the maintenance interval is greatly extended
- ★ Remote monitoring can be configured

24X7 service line

400-658-3060

Sales hotline

400-0536-000

