



# SHANG SHAN JING JI

Carefully Made · Reliable Quality

精心造 · 质可靠

Guangdong Shangshan Precision Machinery Co., Ltd.



# 01

## COMPANY INTRODUCTION

企业介绍



Shangshan Precision Machinery is deeply involved in the field of CNC machine tools, committed to leading industry progress with high-performance machine tools, and helping users solve machining problems.

上善精机深耕数控机床领域，致力于用高性能机床引领行业进步，为用户解决加工难题。

# ABOUT US

## 关于我们

Shangshan Precision Machinery in Guangdong is a high-tech enterprise dedicated to the development and advancement of the mold industry.

With years of focused research and development, we have gained widespread trust and recognition from our customers in the market, serving over 500 corporate clients across various industry sectors. We have also received multiple industry accolades and positive user reviews.

广东上善精机是一家致力于模具行业发展进步的高新技术企业。

经过多年的专注研发和服务，我们赢得了市场用户的广泛信赖和认可，服务500+家企业客户，涵盖多个行业领域，并获得多项行业荣誉和用户好评。





# COMPANY HONORS

## 企业荣誉





# OUR ADVANTAGES

我们的优势

1

## STRONG BRAND STRENGTH

Integrated Research, Development, Production, and Sales;

Compliant with international quality certification standards; Multiple products certified.

2

## HIGH PRODUCTIVITY

Introduction of international equipment and advanced research and manufacturing processes;

Multiple rigorous safety certification tests to ensure product performance.

3

## HIGH COST-EFFECTIVENESS

Self-production and self-sales, eliminating intermediate links to save costs for customers;

50% of the price of imported machine tools.

4

## TECHNICAL SUPPORT

Providing application, operation, maintenance, and repair of machine tools;

Comprehensive pre-sales, during-sales, and after-sales service for your needs.

# 02

## Graphite Machine/Ceramic Machine/High-Speed Machine

石墨机/陶瓷机/高速机



Improve the processing accuracy, efficiency, and surface quality of your products, making them more competitive.

助您提高产品的加工精度、效率和表面质量，让您的产品更具竞争力。

# PRODUCT INTRODUCTION

产品介绍



Gantry graphite  
machine



vertical graphite  
machine



# PRODUCT PARAMETERS

产品参数

## 参数

Model number	S-2500G	S-1500V	S-1000G	S-1200G	S-1350G	S-1100V	S-960V	S-640V	S-500V
Project									
X-axis	2500mm	1500mm	1000mm	1200mm	1350mm	1100mm	900mm	600mm	500mm
Y-axis	1400mm	800mm	820mm	820mm	820mm	600mm	600mm	400mm	400mm
Z-axis	700mm	800mm	350mm	350mm	500mm	700mm	600mm	420mm	400mm
Worktable length	2500mm	1700mm	1000mm	1200mm	1350mm	1300mm	1000mm	700mm	600mm
Worktable width	1200mm	810mm	820mm	820mm	820mm	650mm	600mm	420mm	400mm
Moving speed	15m - 48m/min								
Processing speed	10m - 20m/min								
Spindle speed	12000/15000/20000/24000/32000/40000rpm								
Positioning accuracy	0.005/300mm								
Repeatability accuracy	0.003/300mm								



# PRODUCT FEATURES

产品特点



High precision  
spindle

高精主轴



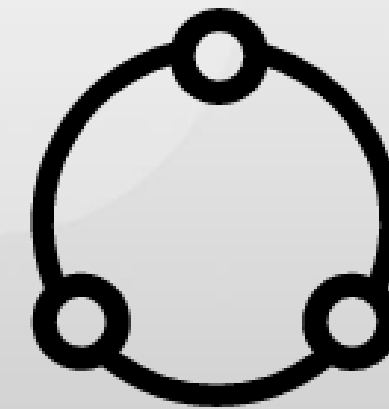
Automatic tool  
changer

自动换刀



Data acquisition

数据采集



Closed-loop  
control

全闭环控制



In-process  
measurement

在线测量



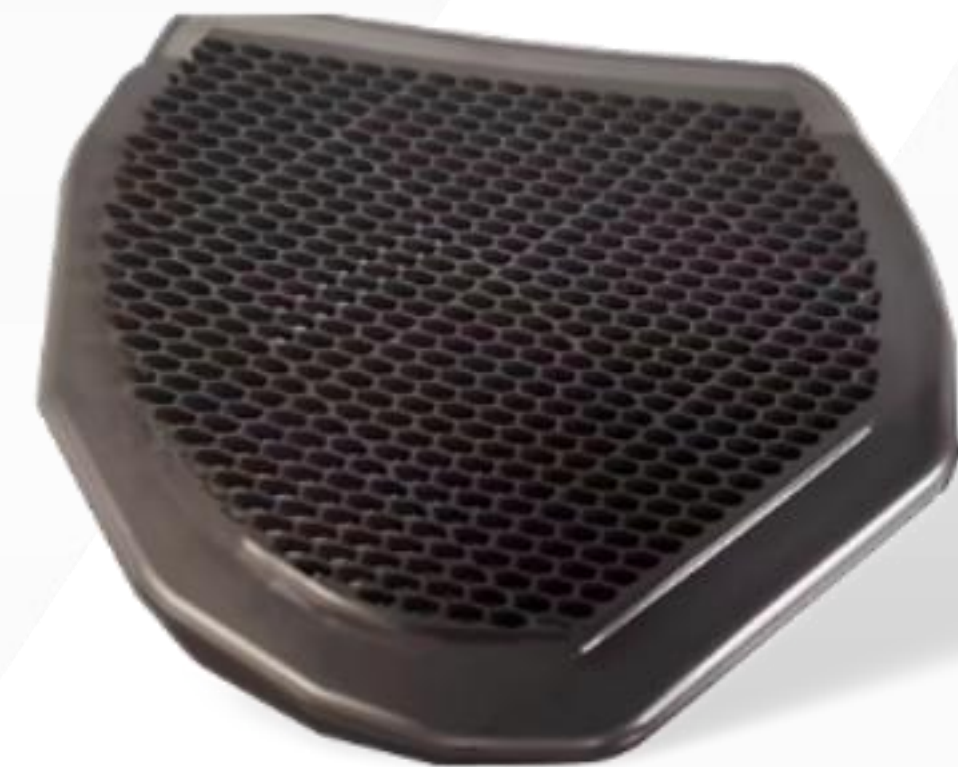
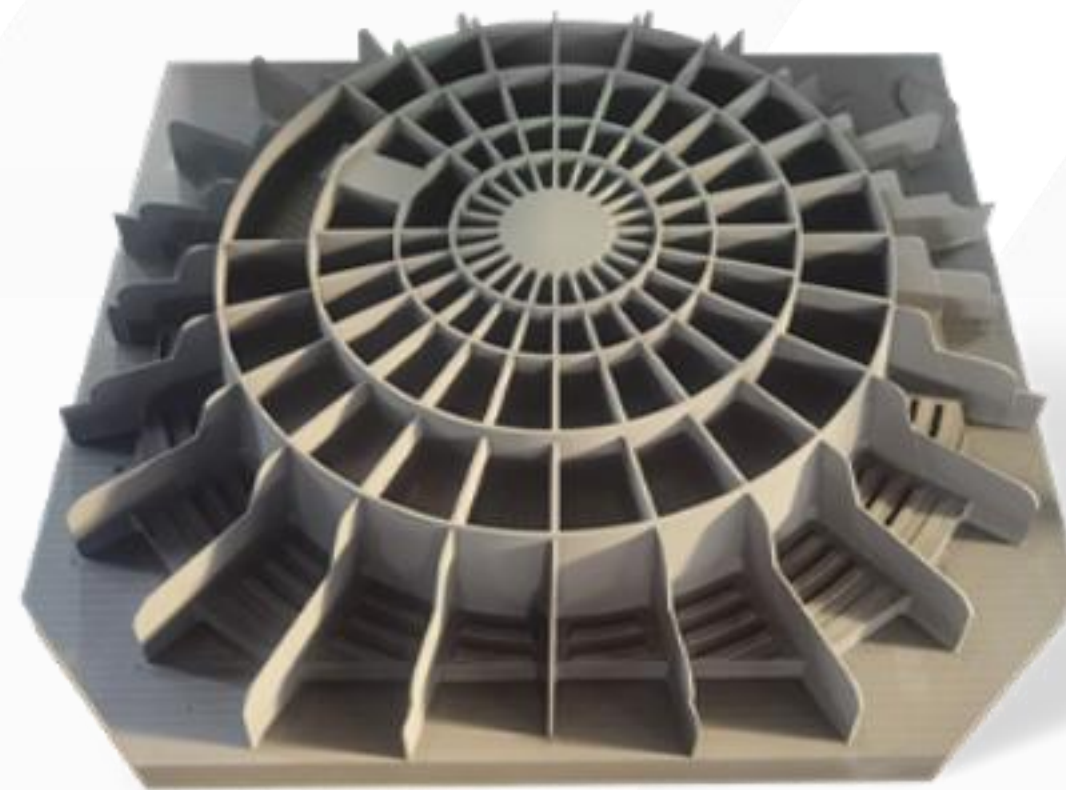
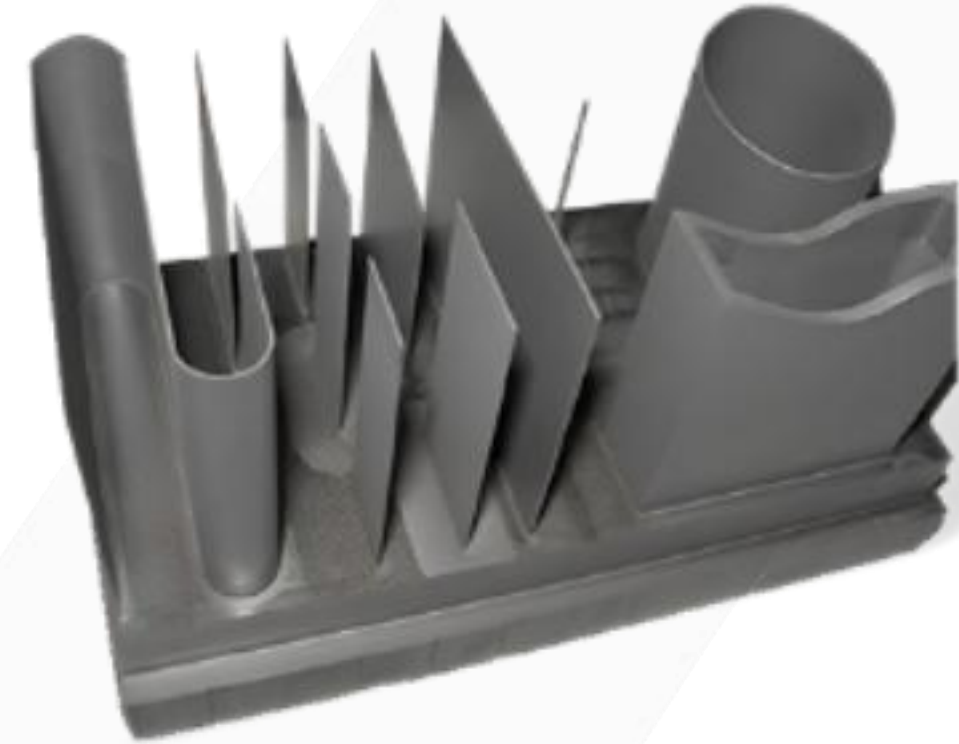
Automatic chip  
removal

自动排屑



# PROCESSED SAMPLES

加工样品





# 03

## GRAPHITE LATHE

石墨车床



With the goal of efficiently processing graphite, the graphite lathe provides precise, stable, and reliable solutions for your production.

以高效加工石墨为目标，石墨车床为您的生产提供精准、稳定、可靠的解决方案。



# PRODUCT INTRODUCTION

石墨车床产品介绍



**Graphite lathe**



Data Collection

数据采集



Fully sealed protection

全密封防护



Automatic chip removal

自动排屑



High rigidity body

高刚性本体



Dust-specific tool turret

尘类专用刀塔



Automatic dust collection

自动集尘



# PRODUCT PARAMETERS

## 石墨车床参数

Parameters			
Item	S-8665NC	S-6550NC	S-500/750NC
Maximum swing diameter	Φ600mm	Φ620mm	Φ520mm
Maximum machining diameter	Φ550mm	Φ600mm	Φ450mm
Maximum machining diameter on the tool holder	Φ550mm	Φ400mm	Φ280mm
Maximum turning length	2000/3000mm	1000mm	500/750mm
Bar diameter	Φ102mm	Φ72mm	Φ52mm
Spindle head type	A2-11	A2-8	A2-6
Maximum spindle speed	860rpm	2000rpm	3500rpm
X-axis/Z-axis movement speed	10m/min	24m/min	24m/min
Positioning accuracy	0.008/300mm	0.008/300mm	0.008/300mm
Repeat positioning accuracy	0.006/300mm	0.006/300mm	0.006/300mm
Number of tool positions	4T Electric Tool Holder	12T Servo Turret	12T Servo Turret
Outer diameter tool holder	40X40	25X25	25X25
Tailstock sleeve diameter	Φ100mm	Φ100mm	Φ80mm
Tailstock sleeve travel	250mm	120mm	80mm
Tailstock sleeve taper hole	Mohs scale 5#	Mohs scale 5#	莫氏5#



# APPLICATION RANGE

应用范围



Graphite Processing

石墨加工



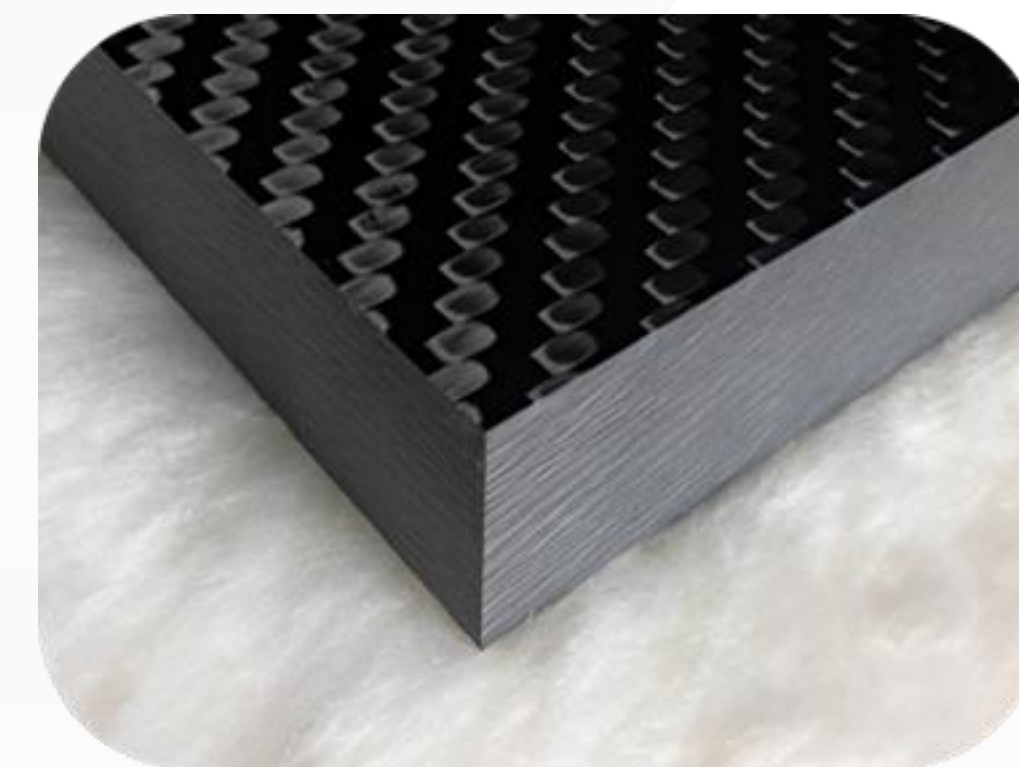
Carbon Fiber Processing

碳纤维加工



Ceramic Processing

陶瓷加工



Composite Material Processing

复合材料加工



# 04

## GRAPHITE DUST COLLECTOR

石墨集尘器



Graphite Dust Collector, providing you with efficient and environmentally friendly graphite processing solutions to make your production more eco-friendly

石墨集尘器，为您提供高效、环保的石墨加工解决方案，让您的生产更加环保。



# PRODUCT INTRODUCTION

产品介绍



**Customizable design**  
可定制化设计

**Excellent dust removal performance**  
优异的除尘效果

**Automatic energy-saving frequency conversion**  
自动节能变频技术

**Micron-level particle filtration accuracy**  
微米级颗粒过滤精度

**Manual/Semi-automatic/Automatic control**  
手动/半自动/全自动控制

**Intermittent pulse reverse blowing ash system**  
间歇式脉冲反喷弹灰系统



# PRODUCT PARAMETERS

## 集尘器参数

Dust collector parameters			
Project/Model	D22	D37	D55
Power supply	380V/50Hz	380V/50Hz	380V/50Hz
Power	2.2KW	3.7KW	5.5KW
Noise	65dB/±2A	70dB/±2A	75dB/±2A
Maximum air suction	3300m <sup>3</sup> /h	4700m <sup>3</sup> /h	6000m <sup>3</sup> /h
Inlet diameter	150/200mm	200/250mm	250/300mm
Dimensions	1100 X 900 X 2200mm	1100 X 900 X 2200mm	1300 X 1100 X 2500mm
Portability	Fixed base feet 固定基脚		
Collection method	Automatic discharge 自动卸料		
Dust cleaning method	Pulse reverse blowing ash system 脉冲反喷弹灰系统		



# THE APPLICATION SCOPE OF A DUST COLLECTOR

集尘器应用范围

Graphite powder

石墨粉

Ceramic powder

陶瓷粉

Wood powder

木材粉

Metal powder

金属粉

Composite material powder

复合材料粉



Effectively collect and filter particles generated during polishing to meet PM2.5 environmental emission standards.

对打磨产生的颗粒物进行有效收集与过滤，达到PM2.5环保排放标准。



# 05

## INTELLIGENT MECHANICAL WAREHOUSE

智能机械料库



We build an intelligent mechanical material library for you, creating an intelligent production line, achieving unmanned production, improving production efficiency, and reducing management costs.

智能机械料库，为您打造智能化生产线，实现无人生产，提升生产效率，降低管理成本。

# PRODUCT INTRODUCTION

产品介绍



Automation Unit



Smart Warehouse



# WAREHOUSE FEATURES

## 料库特点

**Automatic workpiece scanning function**

工件自动扫描功能

**Automatic detection of occupied/vacant positions**

在位/空位自动检测

**Automatic retrieval/execution of programs**

自动调取/执行程序

**Tool holder expansion/automatic tool changing**

刀柄扩容/自动换刀

**360-degree rotation capability of robotic arm**

机械手可 360 度旋转

**Seamless automatic switching between different fixture categories**

不同夹具类别无缝自动切换

**Point-to-point automatic loading and unloading within the range of robotic arm's reach**

机械臂展范围内点对点自动上下料

# PRODUCT PARAMETERS

料库参数

LK-120T database parameters		
sequence number	Project	unit
1	Standard EROWA Compatible Capacity	120个
2	Automatic Door Opening Size	550x1200mm
3	Workpiece Clamping Size	100x100x100mm
4	Vertical Stroke	1100mm
5	Extension Distance	1775mm
6	Carrying Capacity	25kg
7	Total Power	5kw
8	Total Weight	1600kg
9	Overall Dimensions	1400x2300x2200mm



# SERVICE COMMITMENT

服务承诺



Customization  
on demand

按需定制



Free  
shipping

免费物流



Free  
teaching

免费教学



One-year  
warranty

一年质保



24-hour  
service

24小时服务



Lifetime  
technical  
support

终身技术支持

# SHANGSHAN JINGJI

## LOOKS FORWARD TO COOPERATING WITH YOU

上善精机期待与您合作

cooperation  
合作



win-win  
共赢



# CONTACT INFORMATION

联系方式



Mr. Ma



[sales@ssjccnc.ru](mailto:sales@ssjccnc.ru)



+8613510109008



[www.ssjccnc.ru](http://www.ssjccnc.ru)



No. 3 Minfeng South Road, Cuntou Village, Cuntou Industrial Zone,  
Hengli Town, Dongguan City, Guangdong, China.





**THANK YOU FOR WATCHING**

**感谢您的观看**

**Shangshan Jingji Product Album**

**上善精机产品画册**