



S.K. FORGEFIT LLP



Follow Us: 

PRODUCT CATALOGUE

Your Partner for Flanges & Fittings

www.skforgefit.com



S.K. FORGEFIT LLP

Your Partner for
Flanges & Fittings

About Us

We are a leading manufacturer of various types of flanges, fittings, and hammer unions. We have been in business for over 12 years and have a proven track record of providing high-quality products and services to our customers.

We offer a wide range of products to meet the needs of our customers, including :

Flanges : We offer a wide variety of flanges, including Weld Neck, Slip-On, Blind, Socket Weld, Lap Joint, Threaded, Orifice, Reducing, Spectacle Blind, JIS, API and Customized Flanges and more.

Fittings : We offer a variety of fittings, including male adapters, female adapters, unions, and couplings.

Hammer Unions : We offer a variety of hammer unions, including carbon steel hammer unions, stainless steel hammer unions, and ductile iron hammer unions.

We are committed to providing our customers with the best possible products and services. We have a team of experienced engineers and technicians who are dedicated to providing our customers with the technical support they need to choose the right products for their applications.

We also offer a wide range of services to our customers, including :

Custom manufacturing : We can custom manufacture flanges, fittings, and hammer unions to meet the specific needs of our customers.

We are committed to providing our customers with the best possible products, services, and support. We are confident that we can meet your needs and exceed your expectations.

We are ISO 9001:2015, ISO 14001-2015, ISO 45001-2018, or PED certified, which demonstrates our commitment to quality.



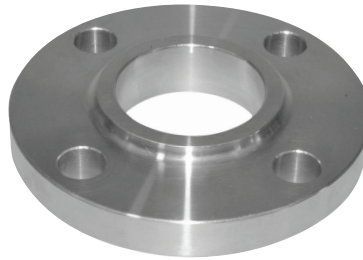
S.K. FORGEFIT LLP

We are your reliable and dedicated partner for all your flanges and fittings needs, offering a comprehensive range of high-quality products, including orifice flanges, designed to meet your specific requirements and ensure optimal performance and safety in various industrial applications.



A weld neck flange is a type of flange that is characterized by a long, tapered hub that is welded to a pipe or fitting.

01 - Weld Neck Flange	
Sizes	1/2" to 24"
Class	150, 300, 400, 600 900, 1500, 2500 Lbs.
Types	RF, FF, RTJ
Material	Carbon steel, Alloy Steel, Stainless steel, Duplex



Slip - On Flange used for fluids at low pressure or with little risk of leakage. It can be used to connect pipes and other equipment.

02 - Slip - On Flange	
Sizes	1/2" to 24"
Class	150, 300, 400, 600 900, 1500, 2500 Lbs.
Types	RF, FF
Material	Carbon steel, Alloy Steel, Stainless steel, Duplex



A blind flange is a solid metal plate with a flanged edge that is used to block off the end of a pipe or a nozzle on a pressure vessel.

03 - Blind Flange	
Sizes	1/2" to 24"
Class	150, 300, 400, 600 900, 1500, 2500 Lbs.
Types	RF, FF, RTJ
Material	Carbon steel, Alloy Steel, Stainless steel, Duplex



A threaded flange is a type of flange that uses a threaded connection to join two pipes or other components.

04 - Threaded Flange	
Sizes	1/2" to 24"
Class	150, 300, 400, 600 900, 1500, 2500 Lbs.
Types	NPT, BSP, BSPT
Material	Carbon steel, Alloy Steel, Stainless steel, Duplex



A socket weld flange is a type of flange that is used to join pipes. It is a Permanent joint that is created by welding the pipe into a socket in the flange.

05 - Socket Weld Flange	
Sizes	1/2" to 24"
Class	150, 300, 400, 600 900, 1500, 2500 Lbs.
Types	RF, FF, RTJ
Material	Carbon steel, Alloy Steel, Stainless steel, Duplex



A lap joint flange is a type of flange that is used to connect pipes in a piping system. It is a two-part assembly, consisting of a stub end and a lap joint ring flange.

06 - Lap Joint Flange	
Sizes	1/2" to 24"
Class	150, 300, 400, 600 900, 1500, 2500 Lbs.
Types	FF
Material	Carbon steel, Alloy Steel, Stainless steel, Duplex

LONG WELD NECK FLANGE

STANDARD | ANSI / ASME B16.5



A long weld neck flange is a type of flange that has a long, tapered neck that gradually meets the wall thickness of the pipe or fitting.

07 - Long Weld Neck Flange

Sizes	1/2" to 24"
Class	150, 300, 400, 600 900, 1500, 2500 Lbs.
Types	RF, FF, RTJ
Material	Carbon steel, Alloy Steel, Stainless steel, Duplex

STANDARD

ANSI/ASME 16.47 - SERIES -A & B



A weld neck flange, also known as a tapered hub flange, It is characterized by a long, tapered neck that is welded to a pipe or fitting

08 - Weld Neck Flange

Sizes	26" to 60"
Class	150, 300, 600, 900 Lbs
Types	RF, RTJ
Material	Carbon steel, Alloy Steel, Stainless steel, Duplex



A blind flange is a type of flange that does not have a center hole. It is used to terminate a pipe or to seal a nozzle opening on a pressure vessel.

09 - Blind Flange

Sizes	26" to 60"
Class	150, 300, 400, 600 900, Lbs.
Types	RF, RTJ
Material	Carbon steel, Alloy Steel, Stainless steel, Duplex

A spectacle blind flange is used to temporarily or permanently block the flow of fluid in a pipeline. It is made up of two discs, one of which is a solid plate and the other is a ring with a hole in the center that is the same size as the pipeline.



10 - Spectacle Blind Flange

Specification	
Sizes	1/2" to 24"
Class	300, 600, 900, 1500, 2500 Lbs
Types	RF, FF, RTJ
Material	Carbon steel, Alloy Steel, Stainless steel, Duplex

A blind and Spacer flange is a type of flange that is used to block or isolate a section of piping. It is a solid disc that is fitted between two flanges and is bolted in place.



11 - Blind and Spacer Flange

Specification	
Sizes	1/2" to 24"
Class	300, 600, 900, 1500, 2500 Lbs
Types	RF, FF, RTJ
Material	Carbon steel, Alloy Steel, Stainless steel, Duplex

STANDARD - JIS

JIS flanges are flanges that conform to the Japanese Industrial Standard (JIS) B2220. This standard specifies the dimensions, materials, and manufacturing tolerances for flanges used in piping systems.

12 - JIS Flange



Class	Size
5 K, 10 K, 16 K,	3/8" to 60"
20 K	3/8" to 36"
30 K, 40 K, 63 K	3/8 to 16"
2 K	18" to 60"

Material : Carbon steel, Alloy Steel, Stainless steel 400, Duplex | Note : Jis Flanges Are Weld Neck, Slip-on, Blind Or Socket Weld Flanges

SOCKET WELD/THREADED FITTINGS

STANDARD | ANSI / ASME B16.11

- **Threaded** Available in Class 2000, 3000, & 6000
- **Socket Weld** Available in Class 3000, 6000 & 9000



90° Elbow

Threaded

Class 2000 - 1/4" to 4"
Class 3000 - 1/8" to 4"
Class 6000 - 1/8" to 4"

Socket Weld

Class 3000 - 1/8" to 4"
Class 6000 - 1/8" to 4"
Class 9000 - 1/2" to 2"



45° Elbow

Threaded

Class 2000 - 1/4" to 4"
Class 3000 - 1/8" to 4"
Class 6000 - 1/8" to 4"

Socket Weld

Class 3000 - 1/8" to 4"
Class 6000 - 1/8" to 4"
Class 9000 - 1/2" to 2"



Tee

Threaded

Class 2000 - 1/4" to 4"
Class 3000 - 1/8" to 4"
Class 6000 - 1/8" to 4"

Socket Weld

Class 3000 - 1/8" to 4"
Class 6000 - 1/8" to 4"
Class 9000 - 1/2" to 2"



Cross

Threaded

Class 2000 - 1/4" to 4"
Class 3000 - 1/8" to 4"
Class 6000 - 1/8" to 4"

Socket Weld

Class 3000 - 1/8" to 4"
Class 6000 - 1/2" to 3"
Class 9000 - 1/2" to 2"

FORGED STREET ELBOW



Street Elbow

Threaded

Class 3000 - 1/8" to 2"
Class 6000 - 1/8" to 1 1/2"

NPT, BSP, BSPT
Carbon steel, Alloy Steel,
Stainless steel, Duplex

COUPLINGS & CAPS

AVAILABLE IN CLASS 3000, 6000 & 9000.



Coupling

Threaded

Class 2000 - 1/4" to 4"
Class 6000 - 1/8" to 4"

Socket Weld

Class 3000 - 1/8" to 4"
Class 6000 - 1/2" to 3"
Class 9000 - 1/2" to 2"



Half Coupling

Threaded

Class 2000 - 1/4" to 4"
Class 6000 - 1/8" to 4"

Socket Weld

Class 3000 - 1/8" to 4"
Class 6000 - 1/8" to 4"
Class 9000 - 1/2" to 2"



Cap

Threaded

Class 3000 - 1/8" to 4"
Class 6000 - 1/8" to 4"

Socket Weld

Class 3000 - 1/8" to 4"
Class 6000 - 1/8" to 4"

PLUGS & BUSHINGS

ANSI / ASME B16.11



Round Plug	1/8" to 4"
Class	3000, 6000 Lbs
Material	Carbon steel Alloy Steel Stainless Steel,



Hexagon Plug	1/8" to 4"
Class	3000, 6000 Lbs
Material	Carbon steel Alloy Steel Stainless Steel,



Square Plug	1/8" to 4"
Class	3000, 6000 Lbs
Material	Carbon steel Alloy Steel Stainless Steel,



Hexagon Bushing	1/8" to 4"
Class	3000, 6000 Lbs
Material	Carbon steel Alloy Steel Stainless Steel,

FORGED HEX NIPPLE THREADED

ANSI / ASME B16.11



Full Size	
Class	3000, 6000 Lbs
Sizes	1/8" to 2"
Thread Type	NPT, BSP, BSPT
Material	Carbon steel, Alloy Steel, Stainless steel, Duplex



Reducing Size	
Class	3000, 6000 Lbs
Sizes	1/8" to 2"
Thread Type	NPT, BSP, BSPT
Material	Carbon steel, Alloy Steel, Stainless steel, Duplex

FORGED UNIONS

ANSI / ASME B16.11



Forged Unions

Threaded

Class 3000 - 1/8" to 3"
Class 6000 - 1/8" to 3"

Socket Weld

Class 3000 - 1/8" to 3"
Class 6000 - 1/8" to 3"
Class 9000 - 1/2" to 2"

Nipple Definition - A pipe nipple threaded is a short piece of pipe with male pipe threads at both ends. It is used to connect two other pipes or fittings together.



Closed Nipple

Sizes	1/8" to 4" Cusmized Up to 12"
Thread Type	NPT, BSP, BSPT
Material	Carbon steel, Alloy Steel, Stainless steel, Duplex



Short Nipple

Sizes	1/8" to 4" Cusmized Up to 12"
Thread Type	NPT, BSP, BSPT
Material	Carbon steel, Alloy Steel, Stainless steel, Duplex



Long Nipple

Sizes	1/8" to 4" Cusmized Up to 12"
Thread Type	NPT, BSP, BSPT
Material	Carbon steel, Alloy Steel, Stainless steel, Duplex

BULL PLUG

ANSI / ASME B16.11

A threaded bull plug is a type of pipe fitting that is used to seal the end of a pipe. It is a solid, cylindrical plug with threaded ends that screw into the



Threaded Bull Plug

Sizes	1/8" to 4"
Schedule	Sch STD, XS, 160, XXS
Thread Type	NPT, BSP, BSPT
Material	Carbon steel, Alloy Steel, Stainless steel, Duplex

SWAGE NIPPLE

MSS SP - 95P



Concentric

Class	Sch STD, XS, 160, XXS)
Sizes	1/4" to 12"
Thread Type	NPT, BSP, BSPT
Material	Carbon steel, Alloy Steel, Stainless steel, Duplex



Eccentric

Class	Sch STD, XS, 160, XXS)
Sizes	1/4" to 12"
Thread Type	NPT, BSP, BSPT
Material	Carbon steel, Alloy Steel, Stainless steel, Duplex

FIGURE 100

- Cold working pressure -1,000 PSI
- Low pressure union
- Manifold & general service



FIGURE 602

- Cold working pressure - 6,000 PSI
- Lip type elastomer seal protects metal-to-metal
- designed to reduce turbulence in the line
- Usage mainly in manifold and mud services
- Available with non-pressure thread sealing ends



FIGURE 200

- Cold working pressure - 2,000 PSI
- General purpose union
- Available in threaded & butt weld

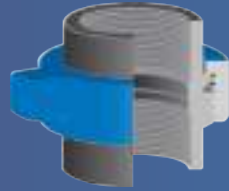


FIGURE 1002

- Cold working pressure -10,000 PSI
- Field replaceable lip type elastomer seal protects secondary metal-to-metal seal
- 5"and 6" butt-weld are 7,500 PSI for standard service
- 5"and 6" butt-weld are 5,000 PSI for sour service



FIGURE 206

- Cold working pressure - 2,000 PSI
- O-Ring in metal sub sealing extends life
- Cup and cone provide "zero clearance against extrusion"
- Available in threaded & butt weld
- All sizes available in sour service
- Available socketweld unions in 2", 3", 4", & 6"

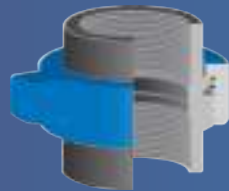


FIGURE 1003

- Cold working pressure - 10,000 PSI
- Misaligning unions are used in high pressure
- applications where the lines are not aligned
- 5" is 7,500 PSI for standard service
- 5" is 5,000 PSI for sour service



FIGURE 207

- Cold working pressure - 2,000 PSI
- Manifold and blanking the end of line -'O' ring cap
- provides leak-free seal
- Connection cap can be tapped for pressure gauge or valve
- Available in threaded & butt weld

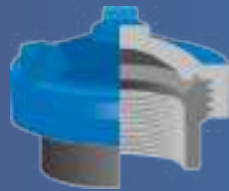


FIGURE 1004

- Cold working pressure - 10,000 PSI
- Field replaceable lip type elastomer seal protects secondary metal-to-metal seal
- Available in forged steel for butt weld connections Schedule XXH



FIGURE 300

- Cold working pressure - 2,000 PSI or 6000PSI
- "Flat Face" design facilitates straight breakout of connected components such as valve or fittings for repair or inspection
- Moderate vacuum service insulated unions available



FIGURE 1502

- Cold working pressure - 15,000 PSI
- Field replaceable lip type elastomer seal protects secondary metal-to-metal seal
- Used mainly in choke / kill lines, cementing, fracturing / testing
- Available in threaded, welded, butt weld and non-pressure thread sealing ends



FIGURE 400

- 2" to 4" sizes CWP is 4,000PSI
- 6" to 12" sizes CWP is 2,500PSI
- Mainly used for manifold pumping and mud pumping



FIGURE 2202

- Cold working pressure - 15,000 PSI
- Field replaceable lip type elastomer seal protects secondary metal to metal seal
- Used in sour gas services
- Meets Nace MR-01-75 standards
- Butt-weld Schedule XXH only





Size	4"
PSI	400 PSI,
Material	Iron / Steel
Figure	206

The hose union is used to join two microbore hose assemblies together, or to connect a microbore hose end to a direct gauge adaptor.

Fig 206 hose unions are typically used in applications where a secure and reliable connection is required. They are often used in the oil and gas industry, as well as in other industries where high-pressure hoses are used.

Standard Service		H2S Service**	
NSCWP	Test	NSCWP	Test
400 PSI	800 PSI	400 PSI	800 PSI

*All Working Pressures are nonshock Cold Working Pressure Ratings (NSCWP)

API 6A FLANGES



Weld Neck



Blind



Adapter



Companion

API 6A flanges are flanges that are designed to meet the specifications of the American Petroleum Institute (API) Standard 6A. API 6A flanges are used in a variety of applications, including oil and gas pipelines, refineries, and chemical plants.

API 6A flanges are RTJ flanges that are made under the API 6A standards. S.K. Forgefit is a manufacturer and supplier of the API 6a Various types Flanges. The 6A flanges have different specifications based on the pressure capacities.

API 6A Flanges	
Name of Flanges	Weld Neck, Blind, Threded, Test Blind, Adaptor
Class	2K, 5K, 10K, 15K, 20K PSI
Material	Carbon steel, Alloy Steel, Stainless steel, Duplex



STYLE 10



STYLE 20



STYLE 30



STYLE 40



STYLE 50



STYLE 60



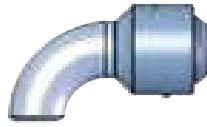
STYLE 70

S P E C I F I C A T I O N S

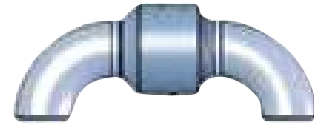
Model	Short Radius Swivel Joints
Style	Style 10 - 100
Connection	1" NPT & 2" LP Female
Size	1", 2" Inch
Pressure	25 Mpa - 70 Mpa
Medium	Water, Oil and Gas Accompanied with sour gas or and Sand
Working Pressure	2000 - 20000 PSI
Working Condition	Standard and Sour Service all are Available
End Connection Type	Weco wing Union, Threaded



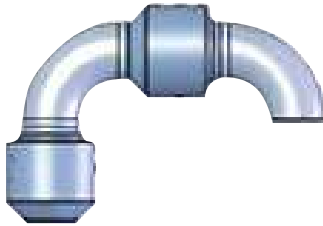
STYLE 20



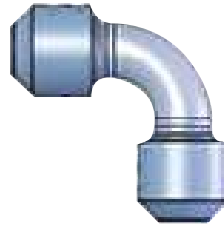
STYLE 30



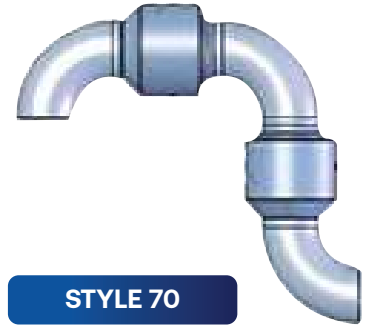
STYLE 40



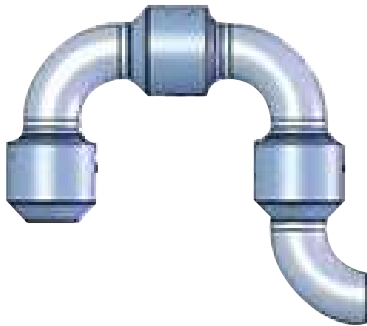
STYLE 50



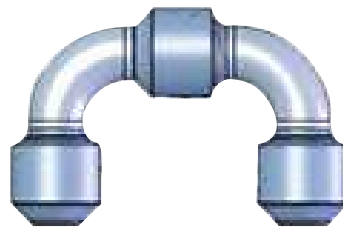
STYLE 60



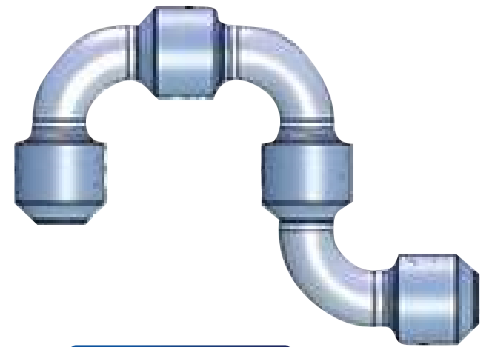
STYLE 70



STYLE 80



STYLE 10



STYLE 100

S P E C I F I C A T I O N S

Model	Long Radius Swivel Joints
Style	Style 10 - 100
Connection	1" NPT & 2" LP Female
Size	1", 4" Inch
Pressure	25 Mpa - 70 Mpa
Medium	Water, Oil and Gas Accompanied with sour gas or and Sand
Working Pressure	2000 - 20000 PSI
Working Condition	Standard and Sour Service all are Available
End Connection Type	Weco wing Union, Threaded

SPECIFICATIONS

Models	Color Code	Cold Working Pressure (PSI)	Material	End Connections	Sizes (inc)						
					3/4	1	1 1/2	2	3	4	
Low Pressure Swivel Joints	Blue	1,000	Carbon Steel	NPT						✓	
				Boveled for Welding						✓	
Hight - Pressure Swivel Joints	Silver	6,000	Alloy Steel	Female line pipe threads	✓	✓	✓	✓	✓	✓	
				Figure 602 union	✓	✓	✓	✓	✓	✓	
Long Sweep Swivel Joints	Olive Green (Sour Gas)	7,500	Alloy Steel	Figure 1002 union					✓	✓	✓
	Olive Green (Sour Gas)	10,000	Alloy Steel	Figure 1502 union					✓	✓	✓
	Black	10,000	Alloy Steel	Female line pipe threads					✓	✓	✓
				Figure 1002 union					✓	✓	✓
	Olive Green (Sour Gas)	15,000	Alloy Steel	Figure 2202 union					✓	✓	
	Red	15,000	Alloy Steel	Figure 1502 union					✓	✓	✓
	Light Blue	20,000	Alloy Steel	Figure 2002 union					✓	✓	



S.K. FORGEFIT LLP

📍 Survey No. 255, Plot No. 23/24, Rivera Industrial Area, Shitala Mata Temple Main Road, Shapur (Veraval), Dist. Rajkot, Gujarat, India - 360024.

☎ +91 99249 25506 | +91 84018 24009

✉ info@skforgefit.com

🌐 sales@skforgefit.com

Follow Us : [G](#) [I](#) [f](#) [in](#)



SCAN ME