



Ruvi tech

Shiv Karan Kochhar
P: +918826015646
E: shivruvitech@gmail.com
W: www.ruvitech.in

Unit I: A-70, Okhla Industrial Area
DDA Sheds, Phase II
New Delhi- 110020, India

Unit II: Khasra No. 658/345/5 & 9,
Village & P.O. Salogra,
Tehsil & Dist. Solan

We offer a variety of assembly options and our capabilities include-

- **SMD Installation-**

Capacity 92000 CPH (Rated).

- **Component Handling-**

Fine Pitch Components Handling Capability with help of fine pitch placer.

- **Soldering-**

Through hole component soldering with the help of Wave Soldering Machine.



We are Delhi
NCR's top PCB
assembly company.

We function as an EMS provider and have created and nurtured long-lasting relationships with our client base-



Over 30 years
of expertise
in the field.

State-of-the-art imported machinery-



Mirae MX 400-Fine
Pitch placer (S. Korea)



Mirae MX 350
(S.Korea)



Mirae MX 200
(S. Korea)



Mirae MPS-1020
(S. Korea)



Neoden 4
(China)



Mantis PCB
Printer, UK



SMT Reflow 7 Zone
(Germany)



Wave Soldering- EMS
Stallion 300 (Germany)

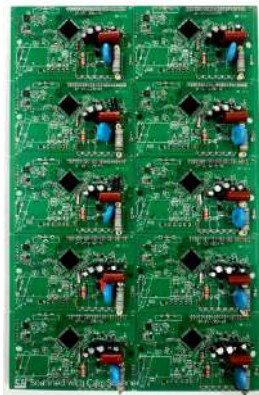
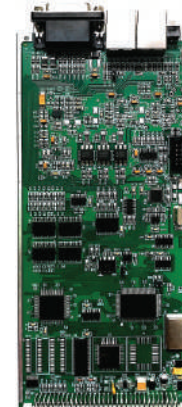
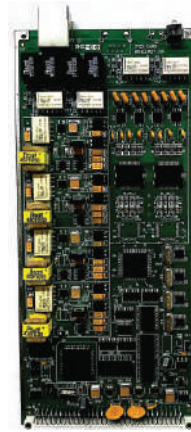
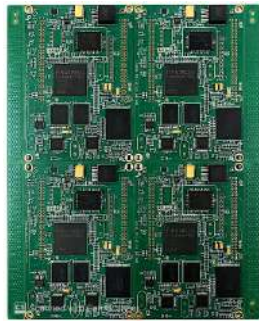


Solder Paste Printer
Autotronik -BS 1400
(Germany)

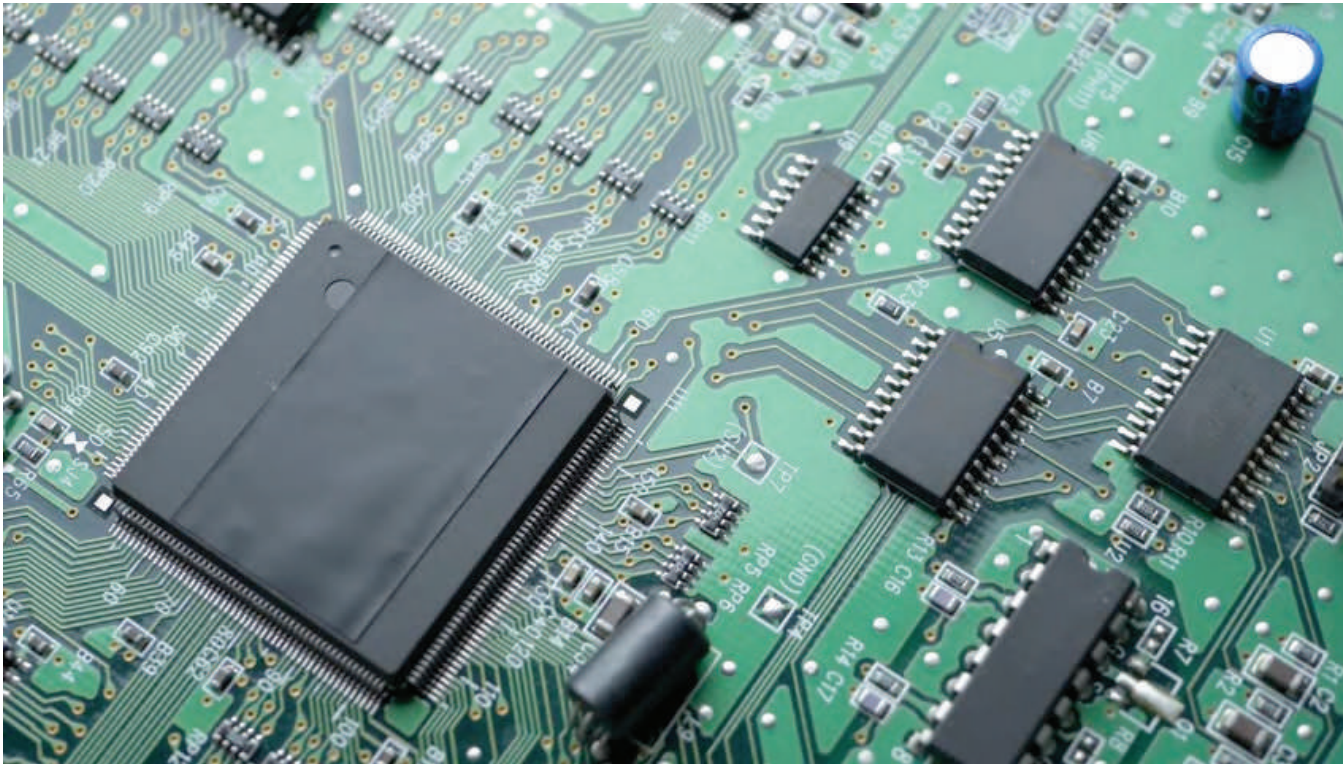


Solder Paste
Softener (Pune)

Precise and high-tech product development-



Contact us for all your PCB assembly needs!



P: +918826015646
E: shivruvitech@gmail.com
W: www.ruvitech.in

