

  
Customized  
Harness

  
Gaming  
Parts

  
LED  
Products

  
Locks &  
Hardware

 **Sen Sen**  
Electronics



[www.sensen-e.com](http://www.sensen-e.com)



## SEN SEN PROVIDES YOU CABLE & WIRE HARNESS ASSEMBLY SERVICE, LED PRODUCTS & GAMING PARTS

Our Philosophy: Top Quality; Best Service; Reasonable Price



Sen Sen Electronics Co., Ltd, located in Taipei Taiwan, is specialized in LED products, customized Harness and Gaming parts. With years of experiences and expertise, we are able to manage and deliver successful OEM/ODM project to satisfy our customers.

Quality, Service and Price are the core philosophy of Sen Sen, we can guarantee to supply the highest quality products to our customers. It is also our advantage to keep us in front of other competitors. Sen Sen is willing to share business know-how and market information to create the most wealth for our customers.



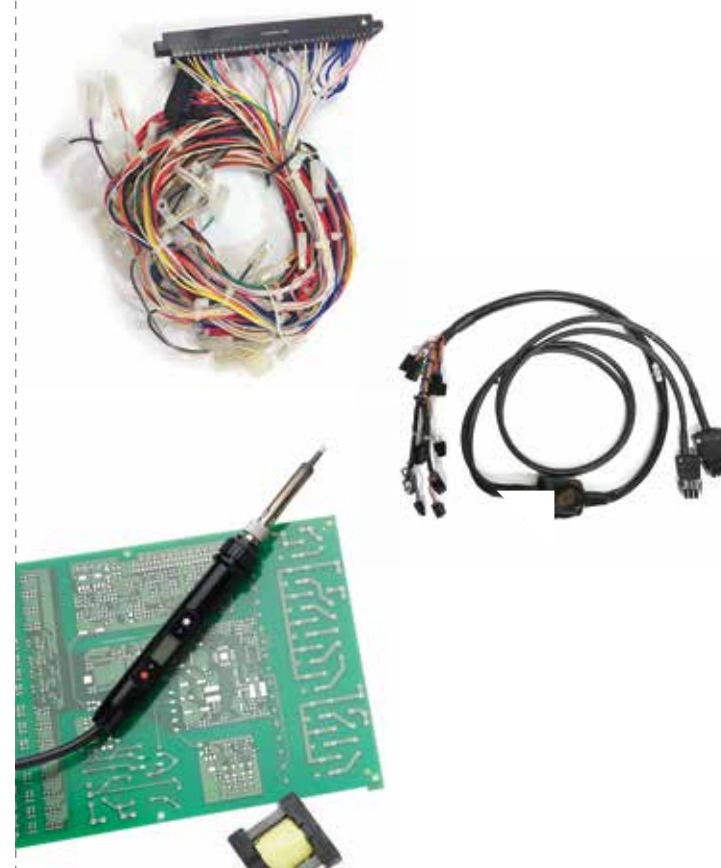
Sen Sen Electronics produces a wide variety of custom wire harness products and cable assemblies for Gaming Machines, Automotive Appliances, Medical Devices, Electrical Vehicles and Motorcycles.

### Design & Development

Sen Sen's engineering team can work virtually to assist in the design process of the custom wiring harness or cable harness assemblies.

### Drawings, Pre-Prototypes and Prototypes

Regardless of informal drawing, CAD drawings, a verbal explanation or modifications to an existing product, we can create a functional prototype. With an extensive component library, strong purchasing presence, and dedicated prototype team, our engineering department is able to support prototype builds in a condensed time frame.



### Wire Harness & Connectors



### CAD Modeling

Our goal is to get our customers' projects off the ground quickly and efficiently.

### Partners from Concept to Prototype to Production

Our engineering professionals can offer creative alternatives and solutions that will improve your quality and productivity. You can trust Sen Sen with your custom wire harness and cable assembly needs.

### Quality Assurance

All Sen Sen manufactured products are 100% electrically tested before delivery.





Gaming Parts

From push buttons to counters, we provides various gaming parts for your selection.



**50 Series Button**  
3 sizes available



**51 Series High Profile Button**  
Button with lamp or LED 



**52 Series Low Profile Button**  
Button with lamp or LED 



**Button Set**  
Buttons with printing sheets, please contact us for more information



**60 Series Button**  
Button with lamp or LED



**70 Series Diamond Button**  
W/RG/RW/RGB Lamp holder available



Small switch lamp holder

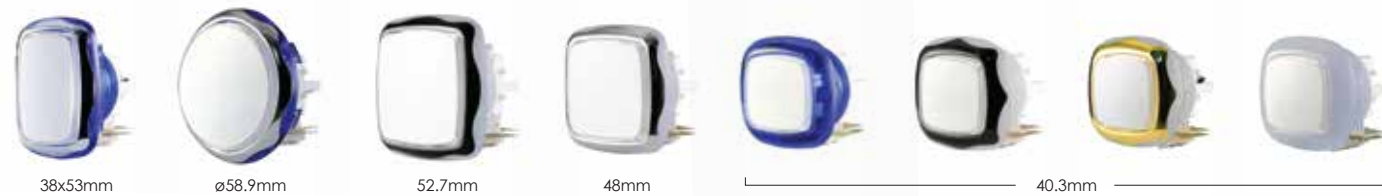


White lamp holder



RG/RW/RGB lamp holder

**80 Series Clear Button**  
W/RG/RW/RGB Lamp holder available







Cliper panel mount

### Electromagnetic Meter

5V/12V/24V, 6 or 7 digit



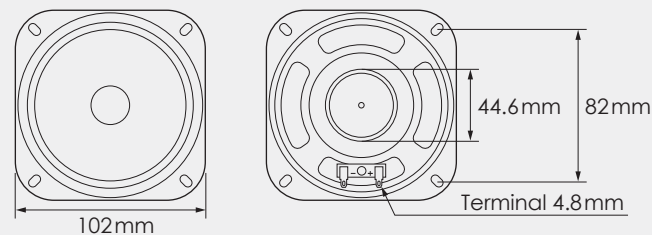
Black



Silver

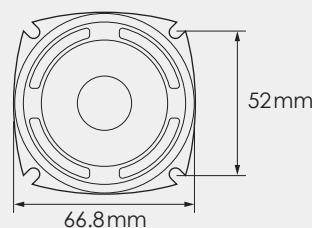
### 4" Speaker

8Ω±1.2 / 5w / 98±2 dB (1w 0.5m)



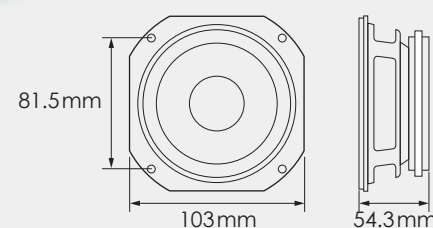
### 2.6" Speaker

10W (Max 12W)  
8±1.2Ω  
94±2dB (1w 0.5m)



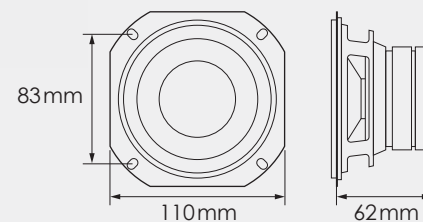
### 4" Speaker

20W (Max 25W)  
8±1.2 Ω  
93±2 dB (1w 0.5m)



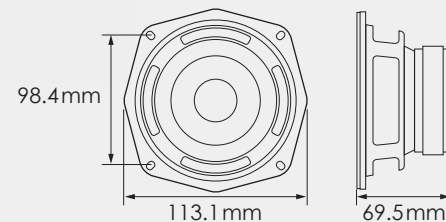
### 4.3" Speaker

25W (Max 40W)  
4±0.6Ω  
90±2dB (1w 0.5m)



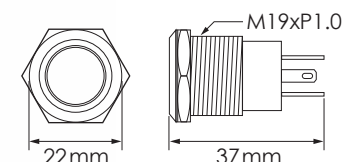
### 5.2" Speaker

40 W (Max 50W)  
4±0.6 Ω  
90±2dB (1w 0.5m)



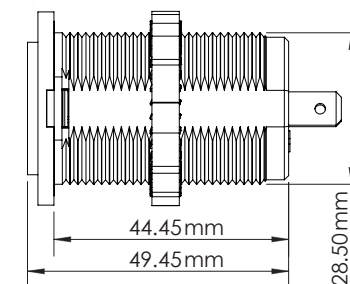
### Waterproof LED Button Switch

12V 20A IP67  
Anti-vandal stainless steel push-button switch with LED ring



### USB Charger

USB-A + USB-C  
15V 2.4A / PD 18w



40x40mm



25x30mm

### Cable Trunking

UL94V-0 & M1 flame rated, UL approved PVC  
15x25~300x100mm



6 pin

### Door Switch

Contact us for more information

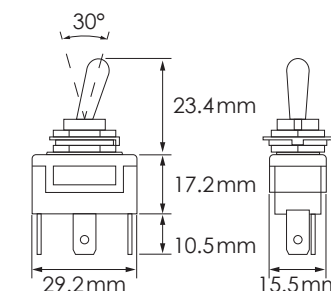


3 pin



### Toggle Switch

Heavy duty brass  
125VAC 15A /  
250VAC 10A



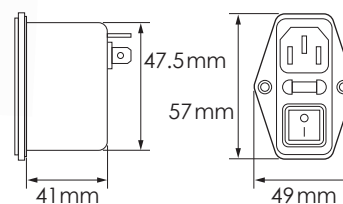
### Micro Switch

Contact us for more information



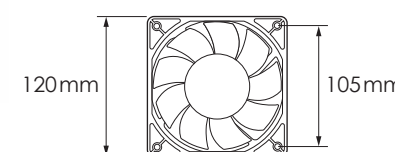
### AC Noise Filter / EMI Filter

115/250V 10A  
60/50 Hz



### 120mm DC Fan

120x120x38mm

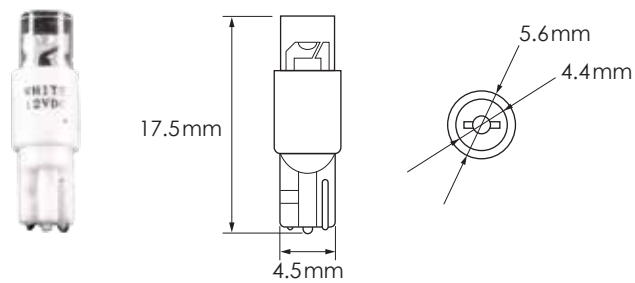




## Lighting & Electrical

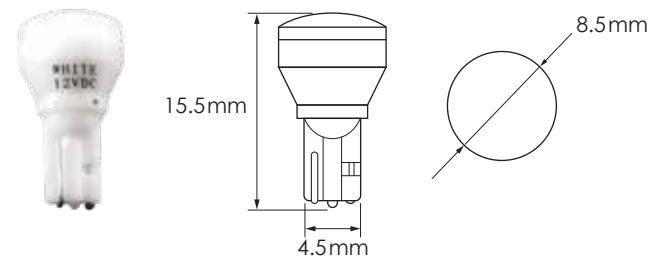
Discover the future of illumination with SenSen Electronics. We are your premier source for high-performance LEDs designed for gaming machines, automobiles, vending spaces, and amusement devices.

At SenSen, we fuse cutting-edge technology with sleek design to deliver unparalleled lighting solutions.



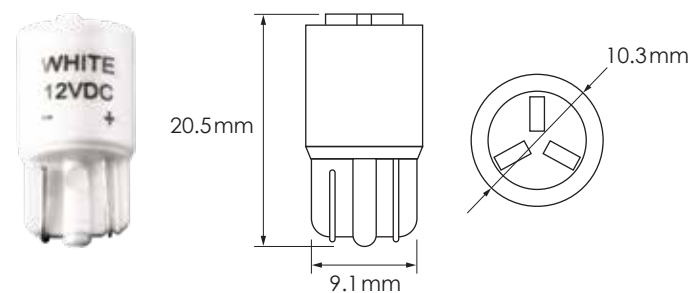
### T5 LED

12V / 18mA / 0.21W



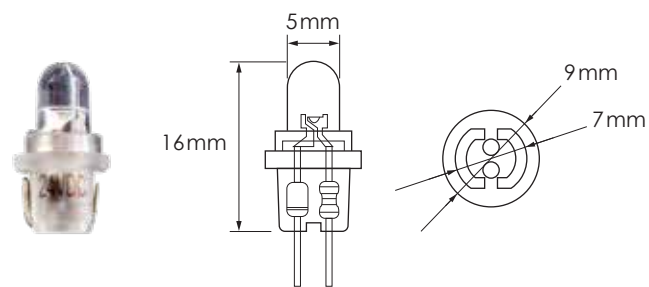
### T5 LED SMD2835 Chip

12V / 20mA / 0.24W



### T10 LED

12V / 10mA / 0.12w



### Tivoli LED

24V / 5LM / 15mA / 0.2w



### T10 LED - Amber

12~24V  
65mA / 0.78w / 75LM



### BAU15S 1056 LED

12~24V  
Contact us for more info



### BAY15D 1157 LED

12~24V  
Contact us for more info



### T20 7440 LED

12~24V  
235mA / 2.82w / 350LM



### T20 7443 LED

12~24V 215/45mA  
2.6/0.5w / 300/60LM



### T20 7440 LED

12~24V  
Contact us for more info



### LED Roll

White / Warm White



### AC Power Cable

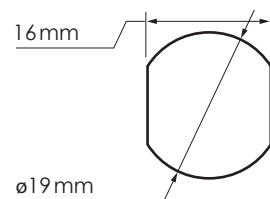
Contact us for more information





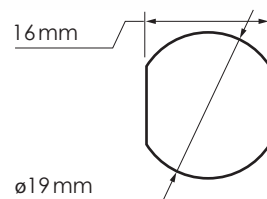
### Cam Lock

7 disk radial tumbler mechanism  
4 sizes available



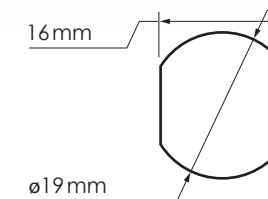
### Cam Lock

7 disk radial tumbler mechanism  
4 sizes available



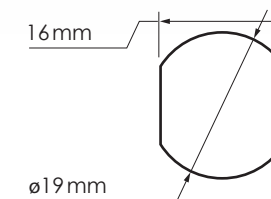
### KABA Lock

9 pin radial tumbler mechanism  
3 sizes available



### KABA Lock

13 pin radial tumbler mechanism  
3 sizes available



Our locks are designed for a wide variety of applications including gaming, vending, medical cabinets, doors and claw machines.



### Color Rings

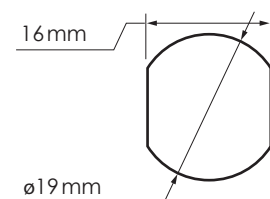
For color coding locks

### Spacers



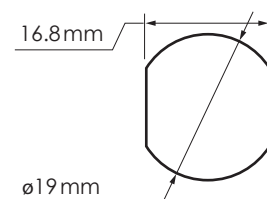
### Cam Lock

7 disk radial tumbler mechanism  
4 sizes available



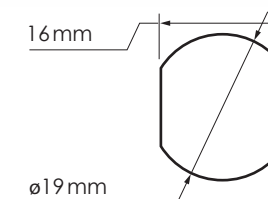
### Reset Lock

2 Positions (on-on) 60°  
Contact Rating: 1A 125VAC, 0.5A 250VAC



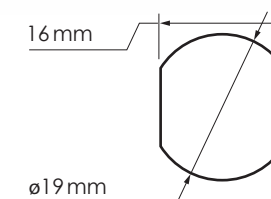
### High Security Lock

7 disk radial tumbler mechanism  
4 sizes available



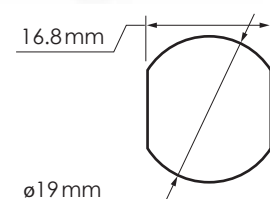
### Flat Pin Lock

4 sizes available



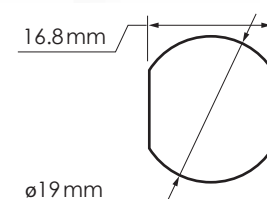
### Switch Lock

2 Positions (off-on)  
Contact Rating: 4A 125VAC, 2A 250VAC



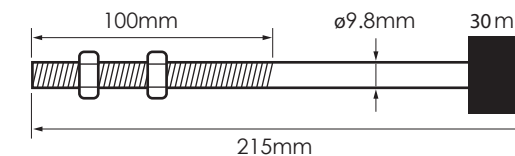
### Switch Lock

2 Positions (off-on)  
Contact Rating: 4A 125VAC, 2A 250VAC



### Spare Tire Lock

8 pin tumbler cylinder  
Anti-drill protection



### Vending Push Lock

7 disk radial tumbler mechanism  
2 Positions  
ø18.8mm x 39mm



1F, No. 15, Lane 92, Tong'an St., Taipei city 100, Taiwan  
Phone: +886-2-2703-1811 Email: [sales@sensen-e.com](mailto:sales@sensen-e.com) URL: [www.sensen-e.com](http://www.sensen-e.com)