



شركة سنتری سٹیل  
CENTURY STEEL

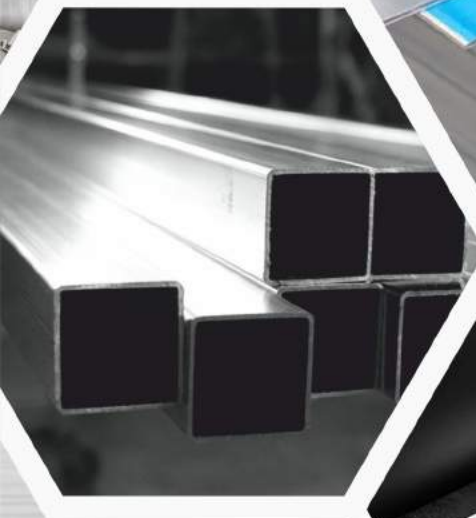
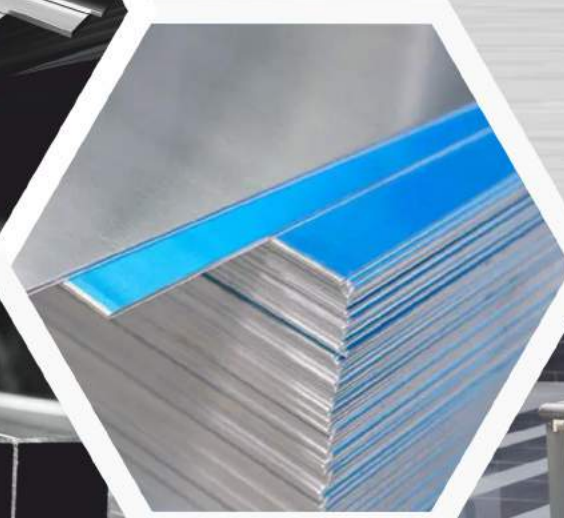
SCAN ME



Follow Us:

@centurysteelkwt f centurysteelkuwait

## Technology that Delivers Strength & Safety



### **CENTURY STEEL** Your Trusted Source For Stainless Steel Needs

- SS Sheets
- Aluminium Sheets
- Galvanized Sheets
- SS Pipes & Tubes
- SS Fittings
- SS Fabrication

# TABLE OF CONTENTS

**ABOUT, MISSION, VISION & VALUES** 03

## **OUR PRODUCTS**

STAINLESS STEEL SHEET & ALUMINIUM PLAIN SHEET	04
GALVANIZED SHEET & ALUMINIUM CHEQUERED PLATE	05
DECORATIVE SHEET & ALUMINIUM COMPOSITE PANEL	06
STAINLESS STEEL ROUND TUBE & STAINLESS STEEL SQUARE TUBE	07
STAINLESS STEEL ANGLES & STAINLESS STEEL FLAT BAR	08
STAINLESS STEEL ROUND BAR ( SHAFT BARS ) & PERFORATED SHEETS	09
STAINLESS STEEL FITTINGS	10-11
STAINLESS STEEL SINK BOWL	12
POLISH MATERIAL	13

**CENTURY STEEL FACTORY** 14

## **OUR SERVICES**

FIBER LASER CUTTING	15
CUTTING & BENDING	16
PIPE / TUBE BENDING	17
STAINLESS STEEL FABRICATION	18-19
KITCHEN HOODS	20
STAINLESS STEEL HAND RAILING	21
MILD STEEL FABRICATION	22

**OUR TEAM** 23

**CONTACT DETAILS** 24

## ABOUT CENTURY STEEL

We are proud to introduce CENTURY STEEL as one of the most prominent stainless steel stockholder providing stainless steel to various industries in the region. We strive to supply of stainless steel sheet, coil, tubes, pipes, fittings and other stainless steel products available in different grades and size specially stocked to meet the local industrial demands. Our investment in stocks enables us to provide a wide range of products for immediate delivery. From the start, our desire for development has led us to seek out new market.

Our advantage lies not only in our extensive inventory, but in our knowledgeable sales team. Century Steel employees have extensive product knowledge & are able to assist with your most difficult request.

Remarkable success and sustainable growth of CENTURY STEEL have been achieved largely by strong loyalty users who accept nothing less but the best products and services. Our commitment to remain at the leading tip of the stainless steel industry is the key to assure your market position.

## MISSION

Deliver excellence in all the work we do and remain aware about environmental sustainability while operating within and complying with international standards; a formula that makes us an integral part of any organization's success.

## VISION

To be the region's most trusted partner, by transforming our beliefs and principles into reality. We aim to continue raising the bar in terms of what we do and achieve.

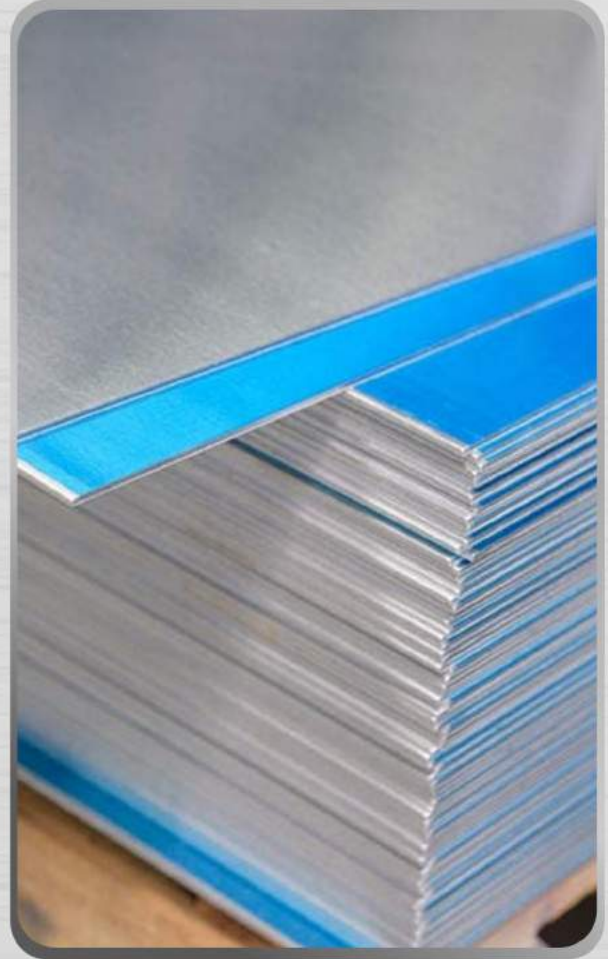
As a result, we strive to build sustainable, enduring relationships and networks whilst expanding our business overseas.

## OUR VALUES

- » Integrity & Team Work
- » Respect & recognition of customers & employees
- » Passion for excellence in everything we do
- » Commitment & Accountability
- » Respect & recognition of customers & employees

## OUR PRODUCTS

Century Steel is one of the most Trusted Stainless Steel suppliers in Kuwait. We believe in developing products that meet national and international standards.



### STAINLESS STEEL SHEETS

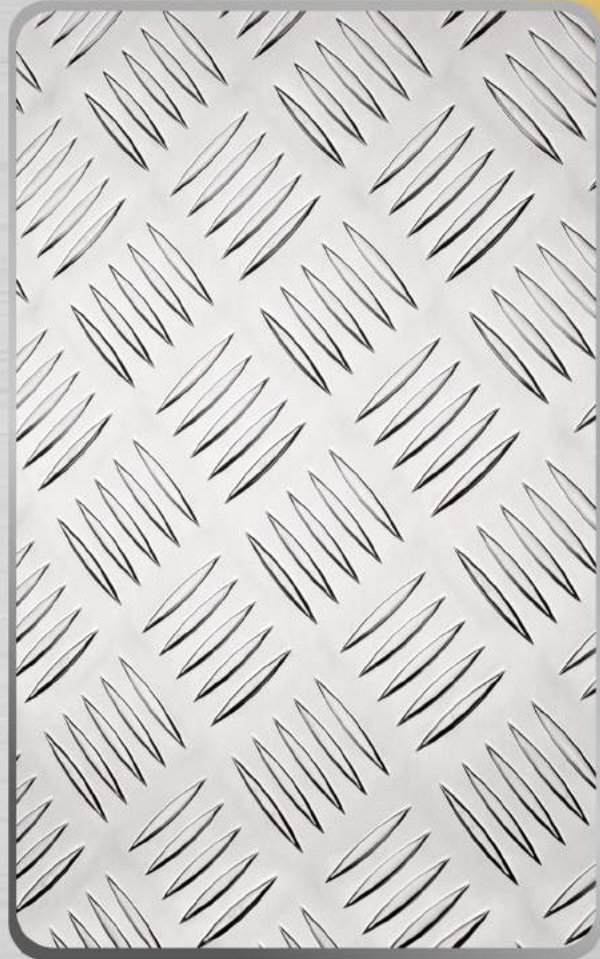
<b>Grades</b>	304 & 316L
<b>Thickness</b>	0.4mm to 16mm
<b>Size Range</b>	4 * 8, 4 * 10, 5 * 10
<b>Finish</b>	Mill Finish, Brush Finish, Mirror & Hairline Finish, 2B, 430 BA

### ALUMINIUM PLAIN SHEETS

<b>Thickness</b>	0.5mm to 10mm
<b>Size Range</b>	4 * 8, 4 * 10, 5 * 10

## OUR PRODUCTS

Galvanized Sheets are premium steel sheets coated with zinc for superior corrosion resistance and durability. Perfect for roofing, cladding, and fencing, they offer an excellent strength-to-weight ratio and ease of installation.



### GALVANIZED SHEET

<b>Size Range</b>	0.3mm to 4mm
<b>Finish</b>	Mill Finish
<b>Size</b>	4 x 8

### ALUMINIUM CHEQUERED PLATE

<b>Thickness</b>	1mm to 4mm
<b>Size Range</b>	4 * 8

## OUR PRODUCTS

Stainless steel is a versatile and durable material widely used in various applications due to its unique features. One of its most important features are corrosion



### DECORATIVE SHEETS

(Golden, Rose Gold, Bronze & Black Sheets )

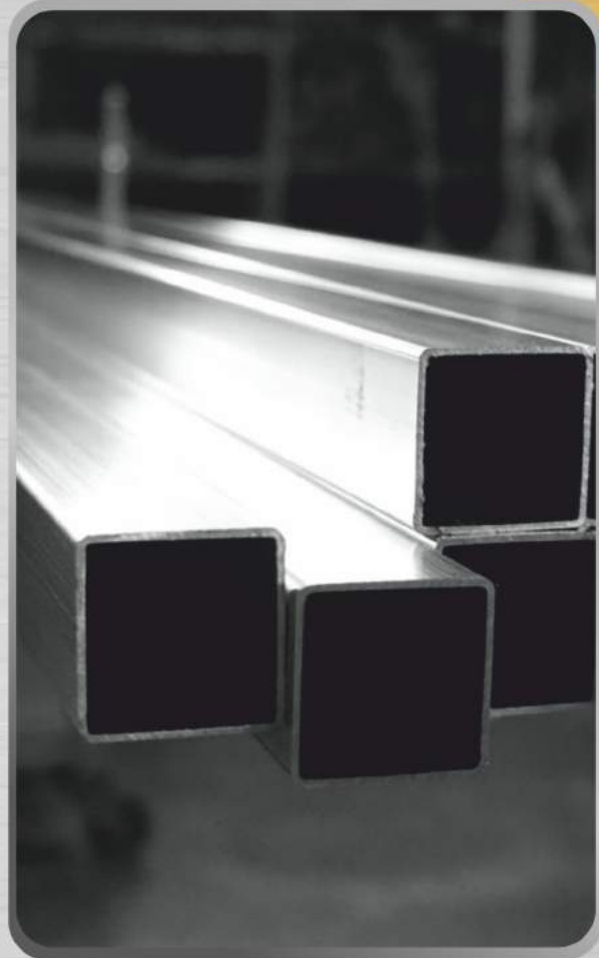
<b>Grades</b>	304
<b>Thickness</b>	0.8mm
<b>Size Range</b>	4 * 8, 4 * 10
<b>Finish</b>	Mirror Finish, Hairline Finish

### ALUMINIUM COMPOSITE PANEL

ACP panels are available in a range of standard colors, such as black, white, silver, grey, and blue, among others. Custom colors can also be produced to match specific project requirements or corporate branding.

## OUR PRODUCTS

To fulfill the quality-conscious needs of our prestigious clients, we offer these Stainless Steel Tubes and Pipes in a variety of diameters, grades, and thicknesses as per the client's specifications.



### STAINLESS STEEL ROUND TUBES ( 304 & 316L )

<b>Size Range</b>	12mm to 101.60mm
<b>Grades</b>	Hairline(180) & Mirror(600)

### STAINLESS STEEL SQUARE TUBE ( 304 & 316L )

<b>Size Range</b>	10 * 10 Till 100 * 100
<b>Grades</b>	Hairline(180) unit Mirror(600) unit

## OUR PRODUCTS

Stainless Steel Profiles (SS Angles / SS Flat Bars / SS Round Bars) –SS Profiles are widely used in architectural segment, heavy machineries, Boilers & many more.



### STAINLESS STEEL Angles ( Gr 304 & 316L )

Stainless Steel Angle is a product which has two legs to form a 90-degree angle. This product is designed to be used in both structural applications and general fabrication

### STAINLESS STEEL Flat Bar ( Gr 304 & 316L )

Stainless steel flat bars are hot rolled, comprise great thickness, high strength, and corrosion resistance. They are used in applications where the steel is not exposed to natural elements like lifts, escalators, and underground stations. Some of the applications and uses of stainless-steel flat bar areas. Flat bar is a basic of building support materials.

## OUR PRODUCTS

SS Round Bar is a long, cylindrical metal bar stock that has many industrial and commercial applications. The most common application is shafts. The product is typically measured by taking its diameter.



### **STAINLESS STEEL Round Bars (Shaft Bars)** ( Gr 304 & 316L )

Standard diameters range from 3.0MM Till 150MM. On account of its versatile applications, SS bars are used in a variety of industries, such as shipbuilding, defense, automotive, textile, paper, etc



### **PERFORATED SHEETS**

Perforated Stainless Steel Sheets are durable and versatile metal sheets that feature a unique pattern of holes punched or laser-cut into the sheet. Made from high-quality stainless steel, they are corrosion-resistant and available in various hole sizes, shapes, and patterns.

## STAINLESS STEEL FITTINGS

Stainless steel fittings are corrosion-resistant, durable, and widely used in various industries. They offer strength, longevity, and a sleek appearance, making them ideal for various industrial applications. With their compatibility and hygienic properties, they are a reliable choice for modern construction and design projects.

**STAINLESS STEEL FITTINGS:** Tube Fitting, Glass Fitting, Trolley Wheel



SS POLISH TOP BALL



SS BALL WITH THREAD BAR



SS DOME END CAP



SS CONNECTOR



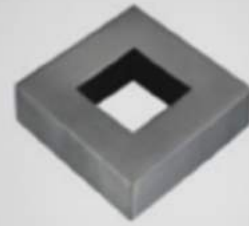
SS PIPE BRACKET



SS FLANGE



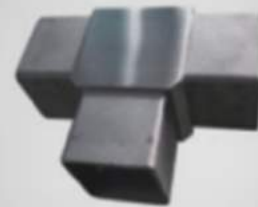
SS SQUARE BASE PLATE



SS FLAT FLANGE COVER



SS SQUARE FLANGE



SS SQUARE TEE



SS WALL BASE CONNECTOR



SS 135 DEGREE ELBOW



SS ADJUSTABLE FLAT SADDLE



SS STRAIGHT SADDLE

## STAINLESS STEEL SINK BOWL

Stainless steel sinks are a popular choice for residential and commercial kitchens, due to their durability, easy maintenance, and sleek appearance. Stainless steel sinks come in various shapes, sizes, and styles to meet the needs of different



kitchen designs and applications. They are also hygienic, as they do not harbor bacteria or other harmful microorganisms.

- Size: 40 \* 40 To 60 \* 50
- Size: 120 \* 70 To 180 \* 70

## POLISH MATERIAL

Polish materials are used to restore the shine and luster to stainless steel surfaces, which can become dull or stained over time due to exposure to environmental factors or regular use. These materials are specifically designed



to work with stainless steel, which is a highly durable and corrosion-resistant alloy used in a wide range of applications.

Stainless steel polish materials can be used on a variety of stainless steel surfaces, including appliances, sinks, counter tops, and cookware.

## CENTURY STEEL FACTORY

### ABOUT FACTORY

We at Century Steel Factory are skilled professionals who specialize in the design, creation, and installation of a wide range of products made from stainless steel. From Laser Cutting to Pipe Bending, we have it all. With years of experience in the industry, we have established ourselves as a trusted name known for our expertise, precision, and attention to detail. We are experts in manipulating this durable and versatile material to produce precise and functional products that meet the needs of a variety of industries and applications. Whether it's a small custom project or a large-scale industrial application, We take pride in our ability to turn our clients' visions into reality, delivering stainless steel solutions that exceed their expectations.

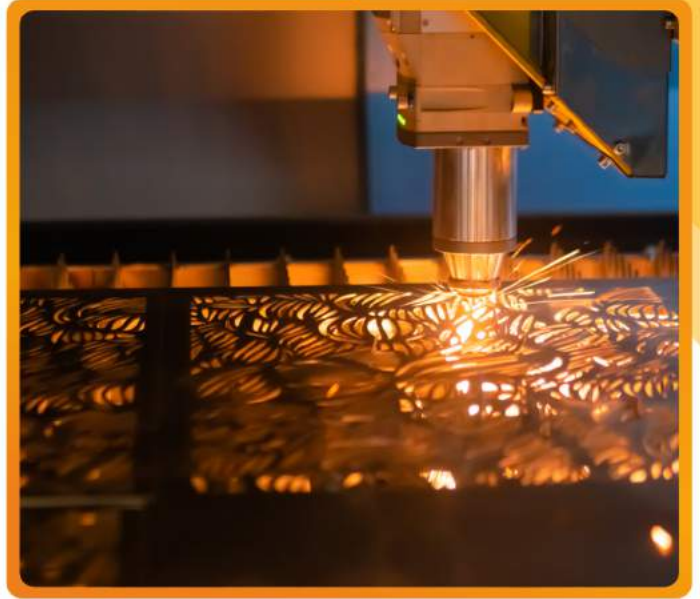
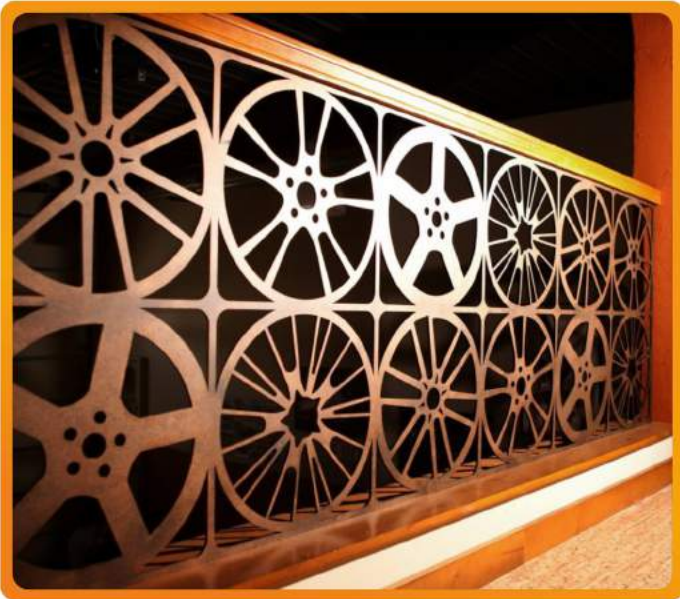
### OUR SERVICES

#### FIBER LASER CUTTING

Fiber laser cutting is a modern technology used to cut a variety of materials, such as metals, plastics, and even some ceramics. It works by using a fiber laser to focus a concentrated beam of light onto the material, which heats up and melts, allowing it to be cut with precision.

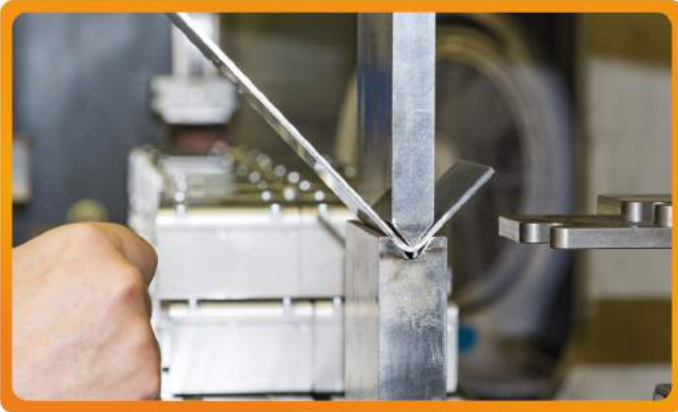


## FIBER LASER CUTTING

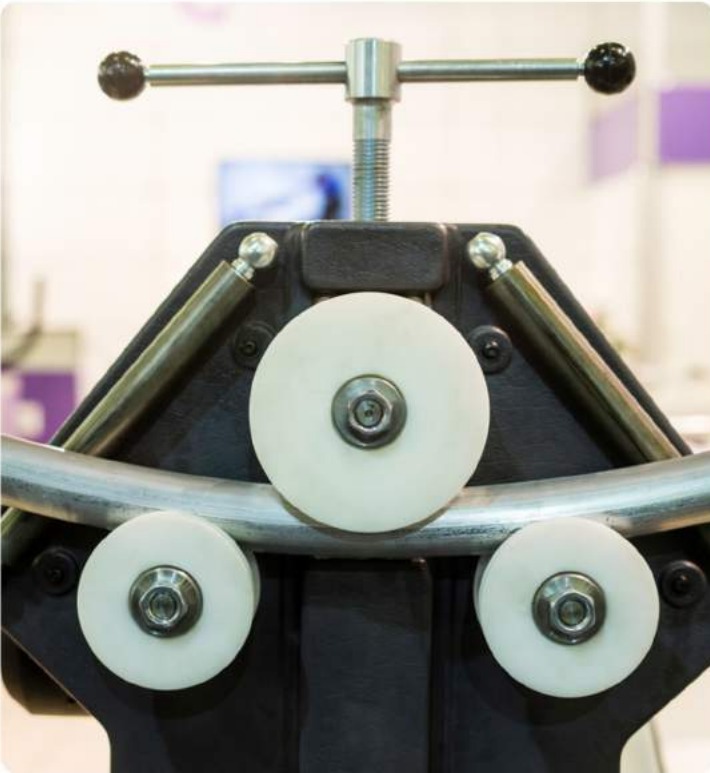


## CUTTING & BENDING

Cutting and Bending are two common finishing processes in the printing and publishing industry. Cutting involves trimming the edges of a printed document to ensure they are even and neat. These techniques are used to create various products and structural steel components.



## PIPE / TUBE BENDING



Pipe/tube bending is a metalworking process that involves the manipulation of pipes and tubes to bend them into a variety of shapes and angles. This crucial process is utilized across a broad range of industries, including automotive, construction, and manufacturing, where pipes and tubes are commonly utilized. Pipe/tube bending is a key component of the manufacturing process, allowing manufacturers to create an extensive range of tubular products for diverse applications.



## STAINLESS STEEL FABRICATION

Stainless steel fabrication is the process of designing, cutting, bending, & assembling stainless steel components and structures to create a variety of products for different industries, such as food and beverage, pharmaceuticals, transportation, architecture, and more.

Stainless steel is a versatile and durable material that offers excellent corrosion resistance, strength, and hygiene, making it a popular choice for a wide range of applications.



# OUR SERVICES



## OUR SERVICES



### KITCHEN HOODS

Kitchen Hoods are ventilation systems that remove smoke, steam, grease, and odors from your kitchen while you cook. Our Kitchen Hoods come in a variety of styles and sizes, featuring powerful fans and efficient filtration systems to keep your kitchen fresh and clean. With easy installation and maintenance, as well as added features like LED lighting and touch controls, they provide the perfect balance of style and functionality. Whether you are an amateur cook or a professional chef, our Kitchen Hoods provide the perfect balance of style and functionality.

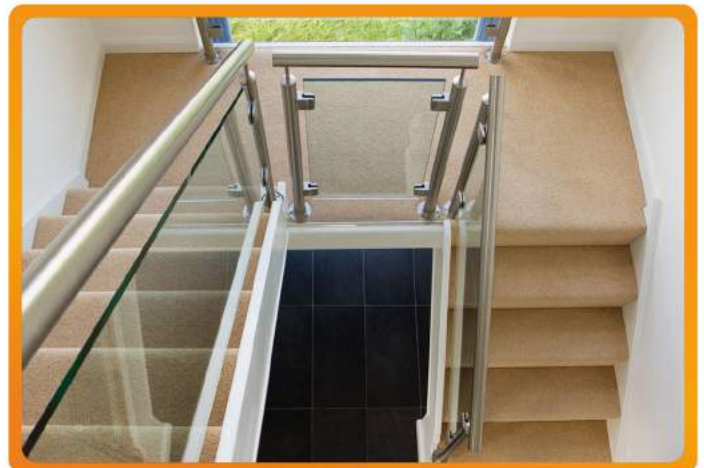


## OUR SERVICES



### STAINLESS STEEL HAND RAILING

Stainless steel hand railings are a popular choice for both commercial and residential applications, providing safety, durability, and a sleek modern aesthetic. Hand railings are typically used on stairs, ramps, balconies, and other elevated areas to prevent falls and provide support for users. There are various styles of stainless steel hand railings, including straight or curved designs, with or without posts, and with different types of mounting options such as a surface mount or fascia mount.



## OUR SERVICES



### MILD STEEL FABRICATION

Mild steel fabrication is the process of creating products by designing, cutting, shaping, and joining mild steel components. It's used in various industries, & mild steel is a versatile and affordable material with good strength. Products can range from small brackets to large structures like buildings and bridges. Mild steel fabrication involves the creation of products by shaping & joining mild steel components for use in industries such as automotive, construction, and manufacturing.



# OUR TEAM

Our Strength is in our teamwork to provide the best quality work for our clients.





شركة سنتری سٹیل  
CENTURY STEEL

## CONTACT US

### CENTURY STEEL GENERAL TRADING CO.WL.L.

**Phone:**

+965 2491 2981  
+965 6907 8762

**Email:**



centurykuwait@gmail.com  
centurysteelkwt@gmail.com  
sales@centurysteelkuwait.com

**Website:**

[www.centurysteelkuwait.com](http://www.centurysteelkuwait.com)

**Address:**

Al Fouzan Mall, Shuwaikh Industrial Area-2 Block #001, Building #48G, Street #2  
Near Zeena Street, Kuwait

**Follow Us:** [centurysteelkuwait](#)  [centurysteelkwt](#) 

### CENTURY STEEL COMPANY FOR ALUMINIUM & FABRICATION

**Phone:**

+965 67006743  
+965 60084943

**Email:**

factory@centurysteelkuwait.com  
centurysteelkwt@gmail.com

**Website:**

[www.centurysteelkuwait.com](http://www.centurysteelkuwait.com)

**Address:**

Building # 111, Block # 01, Street # 41, Behind Center Point,  
Al Rai, Kuwait.