

BINO SCIENTIFIC

"Let the Scientific Revolution Work for You"

Manufacturers & Exporters of ENT EQUIPMENTS & INSTRUMENTS



Tel: +91-9671817704

e-mail :binoscientific@gmail.com

Website: <http://www.binoscientific.com>

Bino Scientific
An ISO 9001:2015 Certified Company

"AADESH COMPLEX",
Court Road, Ambala City-134003,
Haryana (INDIA)

Tel: +91-9671817704 ; e-mail :binoscientific@gmail.com

Website: <http://www.binoscientific.com>



SURGICAL MICROSCOPE for ENT

MODEL : **VISION 3+**

TECHNICAL SPECIFICATIONS:-

Binocular Tubes : Fixed Straight 90deg.
Eye Pieces : 12.5x W.F
Magnifications : 3-step (5x, 10x & 20x)
Objective Lens : F=250 mm
Field of View : 40mm
IPD Adjustment : 55mm to 75mm
Fine Focusing : Manual Focusing

Illumination : 15V/150W twin Lamps with 100% coaxial through the lenses
focused Fiber optics light guide 1.5 meter, white bright light more than 80,000 Lux, maximum at standard condition.

Field of Illumination: 70mm

Live Video through CCD Camera



Arm: Counter balanced pantographic arm with 320 degree rotation.

Vertical Range of Counter Balanced Arm: 250mm to 300mm

Floor Stand: Mobile floor stand on caster wheels for easy handling and absolute stability.

Base: 600mm x 500mm (Approx)

Height : 1500mm (Approx.)

Weight: 65kg (Approx.)

Power: AC 220V, 50/60Hz. (110V on request)

OPTIONAL ACCESSORIES:-

1. Beam Splitter with C' Mount
2. CCD Camera for LIVE Video
3. Motorized Foot Control System
4. LED Monitor

*Hand Free
Foot Operated Pedal Switch
for Fine Focusing*

Bino Scientific
An ISO 9001:2015 Certified Company

"AADESH COMPLEX",
Court Road, Ambala City-134003,
Haryana (INDIA)
Tel: +91-9671817704 ; e-mail : binoscientific@gmail.com
Website: <http://www.binoscientific.com>



CE

SURGICAL MICROSCOPE for ENT

MODEL : **VISION 5+**

TECHNICAL SPECIFICATIONS:-

Binocular Tubes : Fixed Straight 90deg.
Eye Pieces : 12.5x W.F
Magnifications : 5-step (4x,6x,10x,16x & 25x)
Objective Lens : F=250 mm
Field of View : 40mm
IPD Adjustment : 55mm to 75mm
Fine Focusing : Manual Focusing

Illumination : 15V/150W twin Lamps with 100% coaxial through the lenses
focused Fiber optics light guide 1.5 meter, white bright light more than 80,000 Lux, maximum at standard condition.

Field of Illumination: 70mm

Live Video through CCD Camera

Arm: Counter balanced pantographic arm with 320 degree rotation.

Vertical Range of Counter Balanced Arm: 250mm to 300mm

Floor Stand: Mobile floor stand on caster wheels for easy handling and absolute stability.

Base: 600mm x 500mm (Approx)

Height : 1500mm (Approx.)

Weight: 65kg (Approx.)

Power: AC 220V, 50/60Hz. (110V on request)

OPTIONAL ACCESSORIES:-

1. Beam Splitter with C' Mount
2. CCD Camera for LIVE Video
3. Motorized Foot Control System
4. LED Monitor

*Hand Free
Foot Operated Pedal Switch
for Fine Focusing*

*Best Magnification
and Good Resolution*



Bino Scientific
An ISO 9001:2015 Certified Company

"AADESH COMPLEX",
Court Road, Ambala City-134003,
Haryana (INDIA)

Tel: +91-9671817704 ; e-mail : binoscientific@gmail.com

Website: <http://www.binoscientific.com>



Surgical Microscope for ENT

Portable - Table Mounted

MODEL : VISION 3P+

**Twin Halogen Bulbs
Best Quality
Fiber Optic Cable**

*Best Magnification
and Good Resolution*

TECHNICAL DETAILS:-

Binocular Tubes : 90deg.Straight
Eye Pieces : 12.5x W.F
Magnifications : 3-Step (5x,10x,20x)
Objective Lens : F=250 mm
Field of View : 50mm
IPD Adjustment : 55mm to 75mm
Fine Focusing : Manual Focusing
Illumination : 15V/150W twin Lamps with 100% coaxial through the lenses focused Fiber optics light guide 1.5 meter,white bright light more than 80,000 Lux,maximum at standard condition.

Field of Illumination: 70mm

Arm: Counter balanced pantographic arm with 320 degree rotation.

Vertical Range of Counter Balanced Arm: 250mm to 300mm

Stand Mounting :Table Mount Clamp

Weight: 45kg (Approx.) With Packing
Power:AC 220V, 50/60Hz. (110V on request)

OPTIONAL ACCESSORIES:-

1. Beam Splitter with C' Mount
2. CCD Camera for LIVE Video
3. Motorized Foot Control System
4. LED Monitor

*Hand Free
Foot Operated Pedal Switch
for Fine Focusing*



MODEL : VISION 3P+

Bino Scientific
An ISO 9001:2015 Certified Company

"AADESH COMPLEX",
Court Road,Ambala City-134003,
Haryana (INDIA)
Tel: +91-9671817704 ; e-mail :binoscientific@gmail.com
Website: <http://www.binoscientific.com>

International Organization for Standardization
ISO
9001:2015

CE

Surgical Microscope for ENT

Wall Mounted

*Best Magnification
and Good Resolution*

**Dual Halogen Lamps
Top Quality Fiber Optics**

TECHNICAL SPECIFICATIONS:-

Binocular Tubes : Fixed STRAIGHT at 90deg.
Eye Pieces : 12.5x W.F
Magnifications : **5-Step** (4x,6x,10x,16x,25x)

Objective Lens : F=250 mm
Field of View : 40mm
IPD Adjustment : 55mm to 75mm
Fine Focusing : Manual Focusing

Illumination : 15V/150W twin Lamps with 100% coaxial through the lenses focused Fiber optics light guide 1.5 meter, white bright light more than 80,000 Lux, maximum at standard condition.

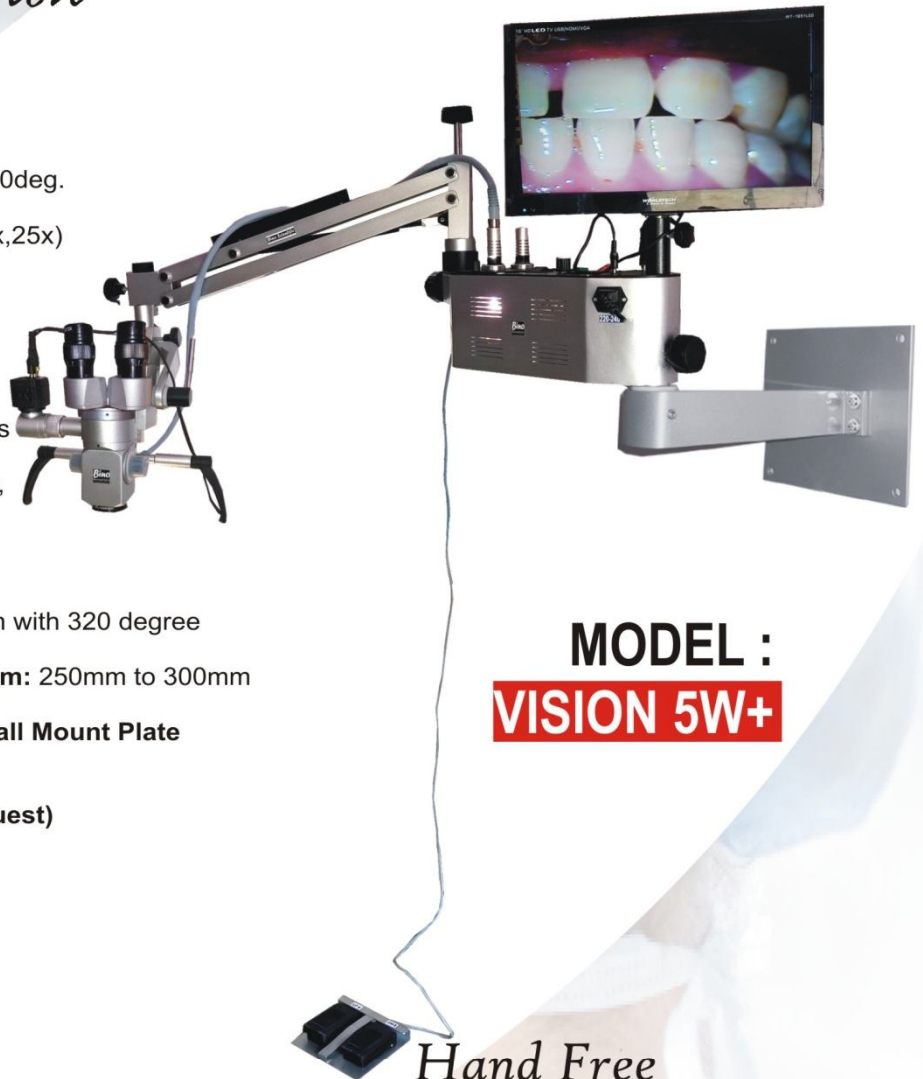
Field of Illumination: 70mm
Arm: Counter balanced pantographic arm with 320 degree rotation.
Vertical Range of Counter Balanced Arm: 250mm to 300mm

Mounting : To be Fixed on Wall with Wall Mount Plate

Weight:45kg (Approx.)
Power:AC 220V, 50/60Hz. (110V on request)

OPTIONAL ACCESSORIES:-

1. Beam Splitter with C' Mount
2. CCD Camera for LIVE Video
3. Motorized Foot Control System
4. LED Monitor



MODEL :
VISION 5W+

*Hand Free
Foot Operated Pedal Switch
for Fine Focusing*



Bino Scientific
An ISO 9001:2015 Certified Company

"AADESH COMPLEX",
Court Road, Ambala City-134003,
Haryana (INDIA)
Tel: +91-9671817704 ; e-mail :binoscientific@gmail.com
Website: <http://www.binoscientific.com>



Surgical Microscope for ENT

Ceiling Mounted

*Best Magnification
and Good Resolution*

TECHNICAL SPECIFICATIONS:-

Binocular Tubes : Fixed STRAIGHT at 90deg.
Eye Pieces : 12.5x W.F

Magnifications : 5-Step (4x,6x,10x,16x,25x)
Objective Lens : F=250 mm
OPTIONAL : F=200mm/300mm

IPD Adjustment : 55mm to 75mm
Fine Focusing : Manual Focusing

Illumination : 15V/150W twin Lamps with 100% coaxial through the lenses focused Fiber optics light guide 1.5 meter, white bright light more than 80,000 Lux,maximum at standard condition.

Field of Illumination: 70mm

Arm: Counter balanced pantographic arm with 320 degree rotation.

Vertical Range of Counter Balanced Arm: 250mm to 300mm

Mounting : Ceiling Mount Plated to be fixed on Ceiling with help of Nut & Bolts.

Weight:45kg (Approx.)
Power:AC 220V, 50/60Hz. (110V on request)

OPTIONAL ACCESSORIES:-

1. Beam Splitter with C' Mount
2. CCD Camera for LIVE Video
3. Motorized Foot Control System
4. LED Monitor

*Hand Free Foot Pedal Switch
for Fine Focusing*

*Dual Halogen Lamps
Top Quality Fiber Optics*



*Live Video through
CCD Camera*

MODEL :
VISION 5C+

Bino Scientific
An ISO 9001:2015 Certified Company

“AADESH COMPLEX”,
Court Road, Ambala City-134003,
Haryana (INDIA)
Tel: +91-9671817704 ; e-mail :binoscientific@gmail.com
Website: http://www.binoscientific.com



LED ENT HEADLIGHT

For Dental, ENT, Plastic & General Surgery

TECHNICAL SPECIFICATIONS:-

LED ENT Headlight

We are providing various Examination Headlights; with Unique design enables headlight adjustment from side to side and from straight down and upward positions.

Economical priced headlight with standard 3Watt LED illumination.

These new generation quality head light illuminate perfectly the examination area in every situation.

Long life LED Lamp provides bright and natural light.

Standard Light Spot of 40mm approx.
Working Distance of 300mm approx.

Convenient Focusing sleeves for uniform quality illumination.

Glamorous adjustable plastic Head-Band with lock.

It is Light Weight Handband, which is comfortable to examine the patients.

This headlight has rechargeable Battery Attachment, continuous working up to 2 hrs

You may also use this Headlight while Recharging.

SUITABLE FOR GENERAL PATIENT EXAMINATION, FOR E.N.T. EXAMINATION, FOR SKIN EXAMINATION



Best Quality with Reasonable Price

Bino Scientific
An ISO 9001:2015 Certified Company

Let the Scientific Revolution Work for You

"AADESH COMPLEX",
Court Road, Ambala City-134003,
Haryana (INDIA)

Tel: +91-9671817704 ; e-mail : binoscientific@gmail.com
Website: <http://www.binoscientific.com>



LED ENT HEADLIGHT

With Intensity Controller

For Dental, ENT, Plastic & General Surgery

TECHNICAL SPECIFICATIONS:-

LED ENT Headlight

We are providing various Examination Headlights; with Unique design enables headlight adjustment from side to side and from straight down and upward positions.

Economical priced headlight with standard 3Watt LED illumination.

These new generation quality head light illuminate perfectly the examination area in every situation.

Long life LED Lamp provides bright and natural light.

Standard Light Spot of 40mm approx.
Working Distance of 300mm approx.

Intensity Controller



Convenient Focusing sleeves for uniform quality illumination.
Glamorous adjustable plastic Head-Band with lock.

It is Light Weight Handband, which is comfortable to examine the patients.

This headlight has rechargeable Battery Attachment, continuous working up to 2 hrs

You may also use this Headlight while Recharging.

SUITABLE FOR GENERAL PATIENT EXAMINATION, FOR E.N.T. EXAMINATION, FOR SKIN EXAMINATION

Best Quality with Reasonable Price

Bino Scientific
An ISO 9001:2015 Certified Company

Let the Scientific Revolution Work for You

"AADESH COMPLEX",
Court Road, Ambala City-134003,
Haryana (INDIA)

Tel: +91-9671817704 ; e-mail :binoscientific@gmail.com

Website: <http://www.binoscientific.com>



9001:2015



LED ENT HEADLIGHT

With Loupe 2.5x / 3.5x

For Dental, ENT, Plastic & General Surgery



TECHNICAL SPECIFICATIONS:-

LED ENT Headlight

We are providing various Examination Headlights; with Unique design enables headlight adjustment from side to side and from straight down and upward positions.

Economical priced headlight with standard 3Watt LED illumination.

These new generation quality head light illuminate perfectly the examination area in every situation.

Long life LED Lamp provides bright and natural light.

Standard Light Spot of 40mm approx.
Working Distance of 300mm approx.

It is equipped with Binocular Loupe 2.5x or 3.5x
Choice of Magnification is Optional

Convenient Focusing sleeves for uniform quality illumination.
Glamorous adjustable plastic Head-Band with lock.

It is Light Weight Handband, which is comfortable to examine the patients.

This headlight has rechargeable Battery Attachment, continuous working up to 2 hrs

You may also use this Headlight while Recharging.



**LOUPE
2.5x/3.5x
(Any One)**

SUITABLE FOR GENERAL PATIENT EXAMINATION, FOR E.N.T. EXAMINATION, FOR SKIN EXAMINATION

Best Quality with Reasonable Price

Bino Scientific
An ISO 9001:2015 Certified Company

Let the Scientific Revolution Work for You

"AADESH COM,
Court Road, Ambala

Haryana (INDIA)

Tel: +91-9671817704 ; e-mail: info@binoscientific.com

Website: <http://www.binoscientific.com>



LED ENT HEADLIGHT

With **Loupe 2.5x / 3.5x** & **Intensity Controller**

For Dental, ENT, Plastic & General Surgery



TECHNICAL SPECIFICATIONS:-

LED ENT Headlight

We are providing various Examination Headlights; with Unique design enables headlight adjustment from side to side and from straight down and upward positions.

Economical priced headlight with standard 3Watt LED illumination.

These new generation quality head light illuminate perfectly the examination area in every situation.

Long life LED Lamp provides bright and natural light.

Standard Light Spot of 40mm approx.
Working Distance of 300mm approx.

Intensity Controller

It is equipped with Binocular Loupe 2.5x or 3.5x
Choice of Magnification is Optional

Convenient Focusing sleeves for uniform quality illumination.
Glamorous adjustable plastic Head-Band with lock.

It is Light Weight Handband, which is comfortable to examine the patients.

This headlight has rechargeable Battery Attachment, continuous working up to 2 hrs

You may also use this Headlight while Recharging.

SUITABLE FOR GENERAL PATIENT EXAMINATION, FOR E.N.T. EXAMINATION, FOR SKIN EXAMINATION

Best Quality with Reasonable Price



**LOUPE
2.5x/3.5x
(Any One)**

Bino Scientific
An ISO 9001:2015 Certified Company

Let the Scientific Revolution Work for You

"AADESH COMPLEX",
Court Road, Ambala City-134003,
Haryana (INDIA)

Tel: +91-9671817704 ; e-mail : binoscientific@gmail.com

Website: <http://www.binoscientific.com>



Surgical Loupe

Let the Scientific Revolution Work for You

*Most Popular Model
Among the
Doctors and Student Doctors*

*Best Magnification
and Good Resolution*

Technical Details

Magnification : 3.5x

Working Distance : 20 cm

Field of View : 4cm

Weight of Loupe : 52gm

2. Adjustment:-

For the best possible view, it is important to set up the binocular loupes exactly.

Please use the following procedures.

- Adjust the both side slightly via the knob on top of the body of the optics.
- Select your I.P.D (Inter-pupillary distance)
- Put on the spectacles and adjust the loupe to suit.
- Horizontally by adjusting the Optics.
- Vertically by swiveling the body of the optics or after removing the spectacles by adjusting the height of the optics by means of the fixing pins.
- Now the adjustment is done and unit is ready for use.

3. Care Instructions:-

The Binocular Loupe should be maintained like any other optical instruments.

- A) Do not use insistent cleaning fluids.
- B) Strictly recommended the use of a lens cloth.
- C) Keep from dust or Store in the case provided



Bino Scientific
An ISO 9001:2015 Certified Company

"AADESH COMPLEX",
Court Road, Ambala City-134003,
Haryana (INDIA)
Tel: +91-9671817704 ; e-mail :binoscientific@gmail.com
Website: <http://www.binoscientific.com>



ENDOSCOPY CAMERA with Coupler

Let the Scientific Revolution Work for You

FEATURES:-

This is an Endoscopy Camera, with its Coupler, which has a connective cable for viewing the Live Image, on TV Monitor.

Excellent Image Quality

1/3" Color CCD Video camera chip

Universal C-mount Eyepiece coupler to connect with various rigid and flexible endoscopes

Special treatment inside of the coupler to reduce the air, which makes it not easy to be fogged.

Good and Steady image quality for long term use

Special treatment for the mechanical structures to bring

- 1/3 Inch SONY CCD;
- OSD menu;
- 700TVL High quality image;
- SONY Effio-E CXD4140 DSP;
- Size (Lens not included): 40mm(L) x 52mm(W) x 47mm(H)

SPECIFICATIONS:

Signal System: NTSC

CPU: SONY Effio-E DSP (CXD4140: 960H)

Image Sensor: 1/3" SONY Super HAD CCD

Pixel: NTSC: 976 x 494

Sync. System: Internal Sync

Horizontal Resolution: 700TVL

Sensitivity: 0Lux (Infrared LED Turn On)

ESC: (NTSC -1/60 - 1/60.000), (PAL -1/50 - 1/50.000)

Manual Shutter: 1/60, 1/250, 1/700, 1/1K, 1/1.6K, 1/2.5K,

1/5K, 1/7K, 1/10K,

1/30K, 1/60K, 1/120K

DNR: LOW, MIDDLE, HIGH, OFF

Auto Gain Control: 0.25, 0.50, 0.75, 1.00 grades for adjustment, max up to 54dB

Backlight Compensation: High Brightness Backlight Compensation (HLC)/ Backlight Compensation

Exposure Mode: Electron exposure

White Balance: ATW / MANUAL / PUSH

SBLC: OFF / LOW / MID / HIGH

AGC: OFF, ON

Day / Night: COLOR, B/W, EXT, AUTO

Motion Detection: ON / OFF (4 Programmable Zone)

Privacy: ON / OFF (4 Programmable Zone)

Mirror: HORIZONTAL

Sharpness: 1 - 20

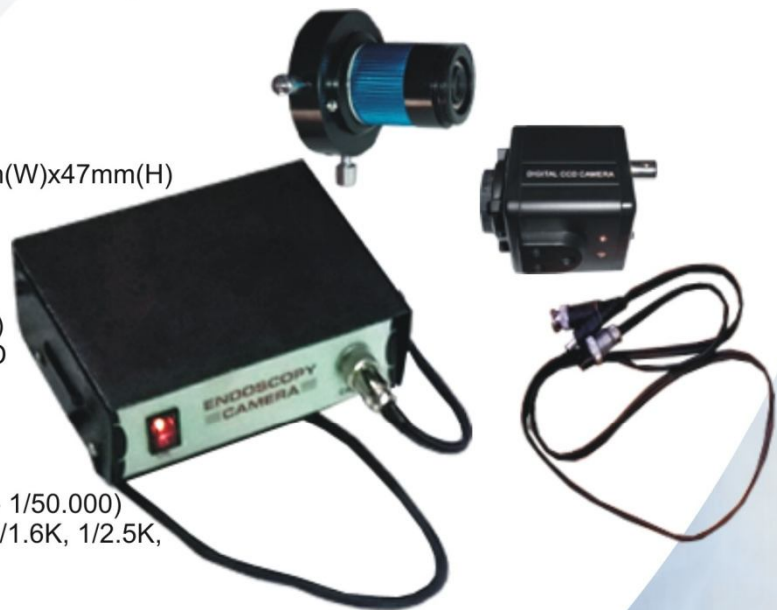
Video Output: 1Vp-p 75 Ohm, Negative

Luminance S/N Ratio: 52dB (AGC off)

Supply Voltage: 12V DC (+10% -20%)

Power Consumption: 700mA (Max)

Operating Temperature: -10 C to +50 C / (Humidity) 30% to 80% RH



Bino Scientific
An ISO 9001:2015 Certified Company

"AADESH COMPLEX",
Court Road, Ambala City-134003,
Haryana (INDIA)

Tel: +91-9671817704 ; e-mail : binoscientific@gmail.com

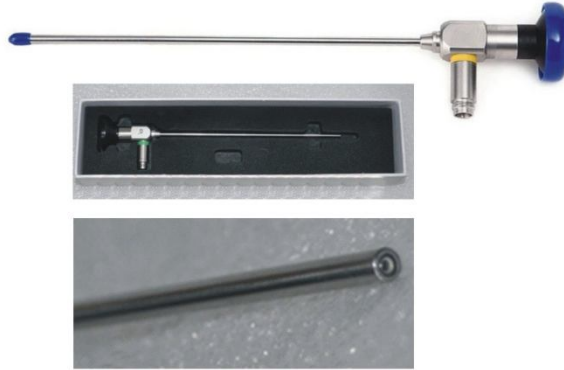
Website: <http://www.binoscientific.com>



Endoscopes/Sinuscopes

Let the Scientific Revolution Work for You

Endoscope 0 Deg., 4mm x 175mm



Endoscope 30 Deg., 2.7mm x 175mm



Endoscope 30 Deg., 4mm x 175mm



Endoscope 70 Deg., 4mm x 175mm



Bino Scientific
An ISO 9001:2015 Certified Company

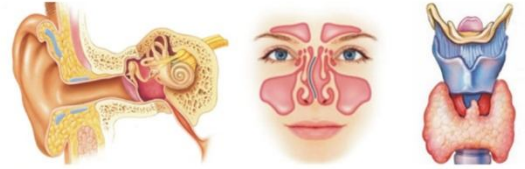
"AADESH COMPLEX",
Court Road, Ambala City-134003,
Haryana (INDIA)
Tel: +91-9671817704 ; e-mail :binoscientific@gmail.com
Website: <http://www.binoscientific.com>

International Organization for Standardization
ISO
9001:2015

CE

Fiber Optic Headlight

Let the Scientific Revolution Work for You



FIBER OPTIC HEADLIGHT (STORZ TYPE FITTINGS)

We are providing various Examination Headlights, with Unique design enables headlight adjustment from side to side and from straight down and upward positions. Coaxial Fiber optic Headlight is available with a variable 50-80mm light spot. Convenient Focusing sleeves for uniform quality illumination. Absolutely no heat through distance lamp source. Glamorous adjustable plastic Head-Band with lock. Variable Light intensity of high intense source
It is Light Weight Handband, which is comfortable to examine the patients.

SPECIFICATIONS:-

Fiber Optic Head Band:

State-of-art multiple coated systems concentrates and focuses the brightest white light available-virtually shadow free. Unique design enables headlight adjustment from side to side and from straight down and upward positions. Coaxial Fiber optic Headlight is available with a variable 50-80mm light spot. Convenient Focusing sleeves for uniform quality illumination. Absolutely no heat through distance lamp source. Glamorous adjustable plastic Head-Band with lock. Variable Light intensity of high intense source. With one spare bulb.

FIBER OPTIC HALOGEN COLD LIGHT SOURCE (Double Port):

Variable light intensity without color temperature change.
Special, Long-life Halogen bulb with Reflector.
Brilliant halogen illumination 15V-150W
Brightness: more than 50,000 Lux
Basically made to suit STORZ instruments..

FIBER OPTIC CABLE

3.5mm dia CARL STORZ type adopter
7.5 feet length



.....
Design & Specification Are Subject to Change As An Improvement Process With or Without Prior Notice

Bino Scientific
An ISO 9001:2015 Certified Company

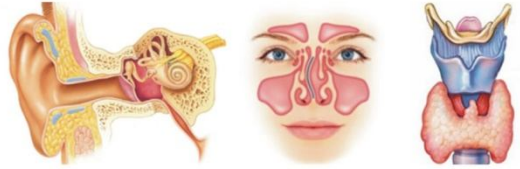
"AADESH COMPLEX",
Court Road, Ambala City-134003,
Haryana (INDIA)
Tel: +91-9671817704 ; e-mail :binoscientific@gmail.com
Website: <http://www.binoscientific.com>

International Organization for Standardization
ISO
9001:2015

CE

Fiber Optic Rigid Bronchoscope

Let the Scientific Revolution Work for You



FIBER OPTIC RIGID BRONCHOSCOPE, WITH LIGHT CARRIER (STORZ FIT)

Fiber Optic Bronchoscope offer the finest in design and craftsmanship to provide optimal clinical performance. Bronchoscope with fiberoptic light carrier, for child, Adolescent and Adults, graduated in centimeters. Esophageal Speculum available in Polishd metal or Mat finishes metal in case.

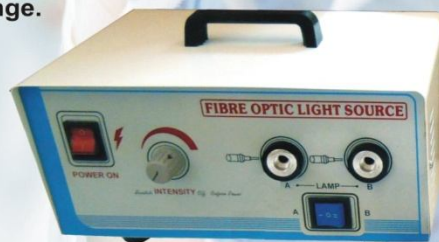
SPECIFICATIONS:

Fiber optics provides a cool distal ring of light with no reflections, no obstructions. Made from autoclavable stainless steel for convenience and durability. Graduated tube with removable tip for fiber cleaning.

F.O. Bronchoscope Adult Length 45cm Dia 16mm
F.O. Bronchoscope Medium Length 35cm Dia 12mm
F.O. Bronchoscope Child Length 25cm Dia 8mm

FIBER OPTIC HALOGEN COLD LIGHT SOURCE (Double Port):

Variable light intensity without color temperature change.
Special, Long-life Halogen bulb with Reflector.
Brilliant halogen illumination 15V-150W
Brightness: more than 50,000 Lux
Basically made to suit STORZ instruments..



FIBER OPTIC CABLE

3.5mm dia CARL STORZ type adpoter
7.5 feet length



Design & Specification Are Subject to Change As An Improvement Process With or Without Prior Notice

Bino Scientific
An ISO 9001:2015 Certified Company

"AADESH COMPLEX",
Court Road, Ambala City-134003,
Haryana (INDIA)
Tel: +91-9671817704 ; e-mail : binoscientific@gmail.com
Website: <http://www.binoscientific.com>



9001:2015



Headband Loupe 2.5x/3.5x

Let the Scientific Revolution Work for You

*Best Magnification
and Good Resolution*



*Flipup Loupe with
Adjustable Headband*

FEATURES:

This is a Light Weight Plastic Headband with Binocular Loupe attached with it. This is being used by the Doctors/Student Doctors, to examine ENT Patients and Dental Patients/problems through the Binocular Loupe with headband support, which is tightly gripped on forehead. Binocular Loupe helps to magnify the Area of Examination, which enables Doctors, to diagnose the problem of the patients, either ENT Patients. It can also be used for General Patient Examination and Skin Examination.

Magnification: 2.5x / 3.5x (Optional on Request)

Working Distance: 250MM

Binocular Loupe

has Convenient Center Focusing knob, to set the Inter Pupillary Distance of an eye. It is the most affordable equipment for Doctors, all the time.



Bino Scientific
An ISO 9001:2015 Certified Company

"AADESH COMPLEX",
Court Road, Ambala City-134003,
Haryana (INDIA)
Tel: +91-9671817704 ; e-mail :binoscientific@gmail.com
Website: <http://www.binoscientific.com>



Temporal Bone Workstation

Let the Scientific Revolution Work for You

FEATURES:-

- Microscope with Beam Splitter & CCD Camera
 - LED Monitor for Video Display
 - Fiber Optic Cold Light Source with Twin Bulb
 - Fiber Optic Cable
 - Suction Guage
 - Suction Release
 - Single Suction Jar
 - Micromotor
 - Instrument Tray
- SINK for Temporal Bone Working Process
Temporal Bone Holder

MICROSCOPE DETAILS :-

Binocular Tubes : 90deg.Straight
Eye Pieces : 12.5x W.F
Magnifications : 3-Step (5x, 10x & 20x)
Objective Lens : F=250 mm
Field of View : 40mm
IPD Adjustment : 55mm to 75mm
Fine Focusing : Manual Focusing

Optical Head is equipped with Beam Splitter and CCD Camera

Illumination : 15V/150W twin Lamps with 100% coaxial through the lenses focused Fiber optics light guide 1.5 meter,white bright light more than 80,000 Lux,maximum at standard condition.

Field of Illumination: 70mm

Arm: Counter balanced pantographic arm with 320 degree rotation.

Vertical Range of Counter Balanced Arm: 250mm to 300mm

Stand Mounting :Mounted on Bone Workstation

Power:AC 220V, 50/60Hz. **(110V on request)**

APPROX DIMENSIONS (L x B x H) & Weight(Kg)

MICROSCOPE : 70 x 54 x 33 cms, 30kg Approx.
Bone Work Station : 122 x 60 x 76 cms, 150kg Approx.

*Best Magnification
and Good Resolution*

Live Video through
CCD Camera



Bino Scientific
An ISO 9001:2015 Certified Company

"AADESH COMPLEX",
Court Road,Ambala City-134003,
Haryana (INDIA)
Tel: +91-9671817704 ; e-mail :binoscientific@gmail.com
Website: <http://www.binoscientific.com>



ENT TREATMENT UNIT

Let the Scientific Revolution Work for You



ENT MICROSCOPE SPECIFICATIONS:-

Binocular Tubes : Fixed Straight 90deg.
Eye Pieces : 12.5x W.F
Magnifications : 3-step (5x, 10x & 20x)
Objective Lens : F=250 mm
Field of View : 40mm
IPD Adjustment : 55mm to 75mm
Fine Focusing : Manual Focusing

Illumination : 15V/150W twin Lamps with 100% coaxial through the lenses focused Fiber optics light guide 1.5 meter, white bright light more than 80,000 Lux, maximum at standard condition.

Field of Illumination: 70mm

Arm: Counter balanced pantographic arm with 320 degree rotation.

Vertical Range of Counter Balanced Arm: 250mm to 300mm

Power: AC 220V, 50/60Hz. (110V on request)

ACCESSORIES:-

1. Beam Splitter with C' Mount
2. CCD Camera for LIVE Video
3. LED Monitor

ENT UNIT FEATURES:-

- Spray Guns-One Straight and One Angle, with Pressure Gauge
- Built-in Light Source with Intensity control
- Built-in Suction Machine with Suction Gauge (Twin Jars)
- X-Ray View Box
- Heat Cautery
- Anti-Fog Device (In-Built) (Heater)
- Pen Light for Endoscope Illumination
- Stainless Instruments Tray with Cover
- Medicine Bottles
- Fiber Optic Cable for ENT Headband
- ENT Headband
- LED Monitor
- Sliding Drawers for Storage
- ENT Headband Hanger
- Endoscope Holder
- Endoscope Camera with Coupler
- Otoscope with Holder
- Waste Container
- Ear Irrigation System & Washout
- Endoscope 0 deg. 4mm x 175mm
- Heine Mini Otoscope
- Power Cable
- Cable for Endoscope Camera
- Video Cable for Endoscope Camera
- Screw Driver and L-Key
- Plug Adaptor
- Twin Vacuum Jars

PATIENT'S CHAIR FEATURES

1. Front /back : Motorized
 2. Up/Down : Motorized
 3. Foot Switch : Up/Down
 4. Rotating : Chair 180deg.
 5. Foot Rest : Legs Support
 6. Handle Rotate: Yes
 7. Head Rest : Yes.
 8. Power Supply : 230V, 50Hz
 9. Height: 23"
 10. Up Level : 34"
 11. 24 Volts DC : yes
 12. Width : 20"
- Nett Weight: 110kg
Wooden Packing Gross Weight: 140kg

Doctor's Stool

1. Usage/Application : Hospital
2. Brand : Bino Scientific
3. Material : SS and PU
4. No Of Leg : 5
5. Number of Wheels : 5
6. Adjustable height: 450 mm to 570 mm
7. Wheel Type : Castor Wheel
8. Rotating Type : 360 Degree

Bino Scientific

An ISO 9001:2015 Certified Company

"AADESH COMPLEX",
Court Road, Ambala City-134003,
Haryana (INDIA)

Tel: +91-9671817704 ; e-mail : binoscientific@gmail.com

Website: <http://www.binoscientific.com>



9001:2015

Other ENT Equipments

Let the Scientific Revolution Work for You

LARYNGOSCOPE SET - CONVENTIONAL

1. Stainless Steel Blade with MetalHeal
2. LED illumination
3. Stainless Steel Handle
4. Dull Finish
5. Pouch Packing

Blade Size: Mac 1+2+3+4+Handle



ENT DIAGNOSTIC SET:

The kit comes with all items as shown in picture

- 1 Battery Handle.
- 1 Ophthalmoscope Parker Header with lens selection,
- 1 Otoscope head with 3 reusable specula's,
- 1 Bent arm illuminator,
- 1 Nasal speculum,
- 1 tong blade holder,
- 1 Nasal tong blade,
- 2 LED spare bulbs,
- 2 Mirrors.



Product Conforms to ISO 9001:2015, CE-Quality Mark and other Quality Standards

Highly polished finish for aesthetic and corrosion resistance.
High Degree of Precision and Flexibility while conducting the Clinical Procedure.

Premium Quality Brass with Superior Craftsmanship.

Bino Scientific
An ISO 9001:2015 Certified Company

"AADESH COMPLEX",
Court Road, Ambala City-134003,
Haryana (INDIA)
Tel: +91-9671817704 ; e-mail :binoscientific@gmail.com
Website: <http://www.binoscientific.com>



:: COMPANY PROFILE ::

Established in Year 2012, at Ambala (Haryana, INDIA), We "**BINO SCIENTIFIC**" are one of the trusted **Manufacturer & Exporter of Medical (Ophthalmic, ENT, Dental), Surgical, Optical Instruments, Hospital Equipment & Pharmaceutical Machinery**, offering top notch knowledge and service to professional nationwide. Seeing the opportunity in the marketplace for new and more efficient scientific vision technology solutions, **BINO SCIENTIFIC** emerged out to create new concept which had an immediate and positive impact in the Medical Market (**Ophthalmic, ENT, Dental), Surgical & Optical Instruments, Hospital Equipments**)

"**BINO SCIENTIFIC**" now has a high technology division, in addition to our product lines, growing sales nation wide. As our company grows, we are constantly bringing new innovations to the marketplace by looking for more products. We are pioneers in our field of expertise; having given to nation the best there is in field of science. Our product range includes everything you may need. We strongly believe in providing best **QUALITY** equipment at most competitive rates.

With this vision we are successful in creating strong customer base both in India & Overseas. With staff both administrative & workers proficient in their respective skills, we can assure uninterrupted supplies with guaranteed quality control and personalized service to our customer. Our people work together seamlessly to deliver benefits for our customer.

OUR TEAM

We are assisted by a team of highly qualified and talented professionals. Our team comprises experts and personnel who hold expertise in their respective fields and have rich industry experience. They are familiar with the demands and requirements of the market and adopt ways which enable us to be at par with our competitors. Moreover, they work in coordination and close proximity with each other to produce unmatched quality of our product range.

We owe our success to them and highly appreciate them for their significant contribution towards our enterprise.

Our team consists of:

- Quality testers
- Highly trained medical graduates
- Ophthalmologists
- Qualified engineers
- Eye experts
- Medical associates
- Allied workforce

QUALITY ASSURANCE

Our prime motive is to manufacture quality range of products. For this, we follow the strict guidelines of international standards in order to attain excellence in our operations. We upgrade our products regularly which in turn allows us to manufacture premium quality Ophthalmic Instruments. Our separate quality testing unit consist of skilled quality testers who supervises the quality level of basic material and make sure that only superior quality material is procured from the vendors. Moreover, they also ensure that the finished products are efficient enough to provide accurate results. Further, we pack our range of products in such a way that they remain protected and defect free for a longer period of time.

The products manufactured by us are tested and analyzed on various parameters of:

- Surgical tolerances
- Performance capability
- Functional reliability
- Adherence to quality standards

INFRASTRUCTURE

Our state-of-art infrastructure unit permit us to achieve highest level of precision and consistency in our high products. The entire unit is well equipped with infrastructure facilities which help us to produce excellent quality instruments. Spread over a sprawling area, our production unit uses latest techniques and technology to develop the entire range of Ophthalmic Instruments. We are able to meet bulk requirements of our clients only due to high performance of our machines.

We use the following sophisticated machines in our infrastructure unit:

- Milling machine
- Precision cutting machine
- Lathe
- Drilling
- Optical testing kit
- Eye surgery equipment

CLIENT SATISFACTION

Being a client centric organization, we make sure that the products we offer are properly packed so that they are delivered defect free to the clients. Moreover, we also see that our entire range of instruments is designed keeping in mind the standards and specifications of the clients. Through a well-established distribution network on a global basis we have provided Eye Care Industry with high quality Ophthalmic instruments.

WHY US?

We have attained an enviable position in the international market and are known to produce unmatched quality of products.

Some of the factors which have made us a foremost choice over our competitors is as follows:

- Our products are a blend of technological advancements and style statement
- We make sure that our products are in accordance with the prevalent life style
- We believe in chalking out deals that are transparent and ethical
- We mold our resources to match the requirements of the clients