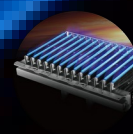


HAODI 豪帝

COMBUSTION SYSTEM · HEAT EXCHANGING SYSTEM



ZHONGSHAN HAODI ELECTRIC CO., LTD.

HAODI was founded in Zhejiang in 1995 and relocated to Zhongshan, Guangdong in 2001. Currently, the company owns a factory with 15,000 square meters. The facility is equipped with more than 120 precision punching devices, and employs over 220 staff, including more than 20 senior engineers, technicians, and quality control professionals. Haodi has its own R&D center, laboratory, and quality control system, it is certificated ISO9001. The company's annual production exceeds 3.8 million units of high-quality burners, heat recovery, and expansion tanks.

For over 30 years, Haodi has focused on the research and innovation of various types of gas combustion system, secondary heat exchangers, and expansion tanks. The products have passed multiple domestic and international standard, including 3C and ErP. Haodi holds numerous invention, utility model, and design patents. The product range includes harmonica burners, forced draft burners, forced boost burners, wall-mounted gas boiler burners, integrated burners, low-NOx water-cooled burners, rich-lean burners, fully premixed burners, secondary heat exchangers, and expansion tanks.

Haodi is committed to independent innovation and continuous improvement. The burner series features fully efficient combustion, stable flames, low combustion noise, reduced CO and NOx emissions, strong single-unit thermal load capacity, and stable batch performance. These attributes have established Haodi with a strong reputation in the field.

Haodi's clients include well-known brands such as Haier, Midea, Vanward, Vatti, Gree, Bede, Faroe, Jinmeida, and Sakura. The company is also a longstanding, excellent supplier and a key supporter of new product development for leading heating enterprises like Haier, Midea, Marco, and Vatti



■ Corporate Mission

To continuously provide high-quality, safe, and innovative supporting products for the industry.

■ Corporate Target

To be most preferable supplier

HAODI 豪帝

Partners

Appreciated for the continuous support from our partners, we are one of the outstanding suppliers in the field.

30 YEARS THANK YOU FOR YOUR SUPPORT!



What we offer

- Well-design products
- Full team support form product definition, product design, tooling, testing, logistic and after-sales service
- Strict quality control and process control
- Dedicated team without limitations to R&D, Engineering, QE and project management
- Ordering planning and On-time delivery

Exceptional Innovation Capabilities



Product Introduction

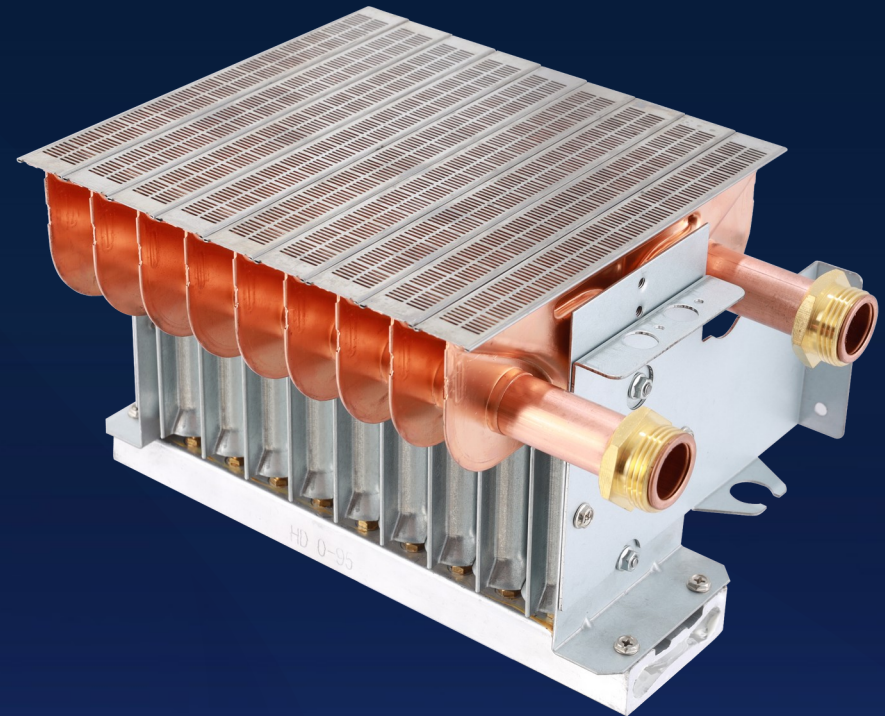
Combustion burner

Line-up

- **Harmonica Series**
- **Forced Exhaust Series**
- **Forced Boost Series**
- **Gas Boiler Burners Series**
- **Water Cooling, Low NOx Series**
- **Low Nox, Lean-rich combustion Series**
- **Integrated Burner Series**
- **Premix combustion series**

Technical Features:

- Complete combustion
- More stable combustion
- Lower combustion sound
- Lower CO emissions
- Lower NOx emissions
- Bigger thermal load capacity
- High efficiency



Harmonica Series

JSD20-T10K5-1.14T

Burner for natural exhaust water heater
With winter/summer switch



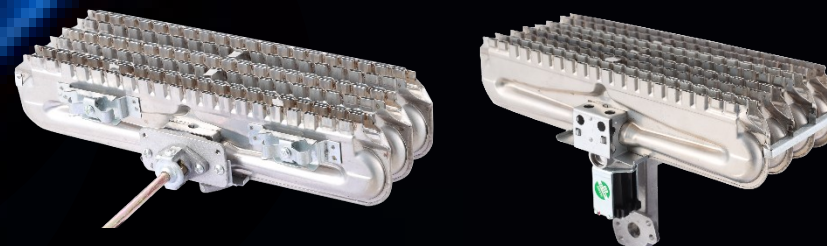
Features

- Low combustion sound,
Well designed , long life time
suitable for nature exhaust water heater.

Parameters

Dimension	258(W)×135(D) mm
Material	#201 Stainless steel
Applicable gas source	NG or LPG

Option



Forced Exhaust Series

JSQ20-T10K5-1.14T

Burner for forced exhaust type water heater



Features

- Can be left/right direction, with patented burner orifice, suitable for 20-25kW gas water heater.

Parameters

Dimension	189(W)×122(D) mm
Installation distance	172 mm
Material	#201 Stainless steel, housing is Galvanized sheet
Application gas source	NG or LPG

DRY LOW CO BURNERS

JSG54-28L18P-3VT

Burner for boost type water heater



Features

- Stable combustion, high load capacity, low NOx emissions, low CO emissions, low combustion noise.

suitable for gas water heater with 58kW max. heat input

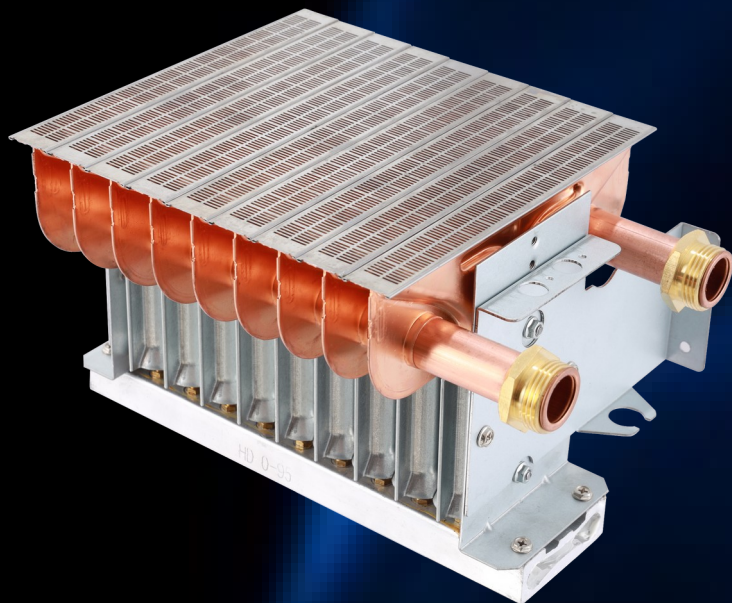
Parameters

Dimension	305×104×103mm
Installation distance	172 mm
Material	#201 Stainless steel, housing is Galvanized sheet
Application gas source	NG or LPG

WATER-COOLED Low-NOx BURNER

JSL20-R9C9-0.8PT

WATER-COOLED BURNERS FOR LOW NOx
ATMOSPHERIC APPLIANCE



Features

- Gas boiler dedicated water-cooled burner, featuring excellent combustion performance. NOx emissions comply with EU standards, CO emissions are low, combustion noise is low, and the single-unit thermal load capacity is strong.

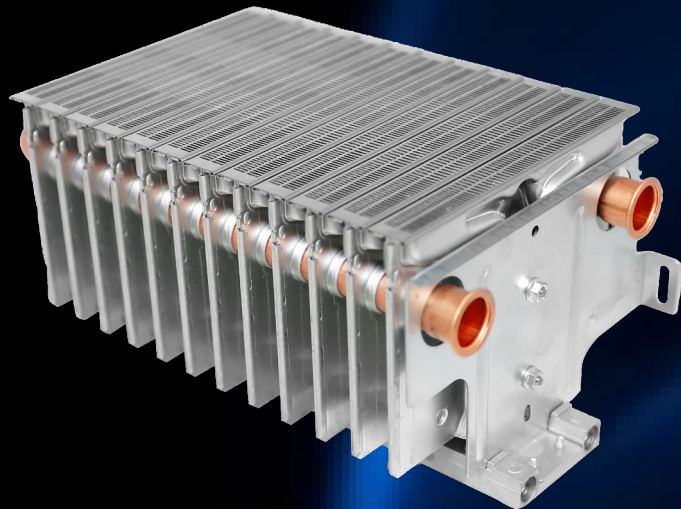
Parameters

Dimension	270(W)×180(D) mm
Installation distance	210 mm
Material	Stainless steel and copper
Application gas source	NG or LPG

WATER-COOLED BURNER

JSL33-R15C15-0.8PT

WATER-COOLED BURNERS FOR LOW NO_x
ATMOSPHERIC APPLIANCE



Features

- With ultra low No_x, fully match the requirement of CE standard. With patten orifice design, combustion is stable. Meets various boundary gas measurement evaluations.

Parameters

Dimension	340(W)×180(D) mm
Installation distance	282 mm
Material	#201 Stainless steel and copper
Applicable gas source	NG or LPG

LEAN-RICH COMBUSTION BURNER

JSP35-Z9-0.7VT



Features

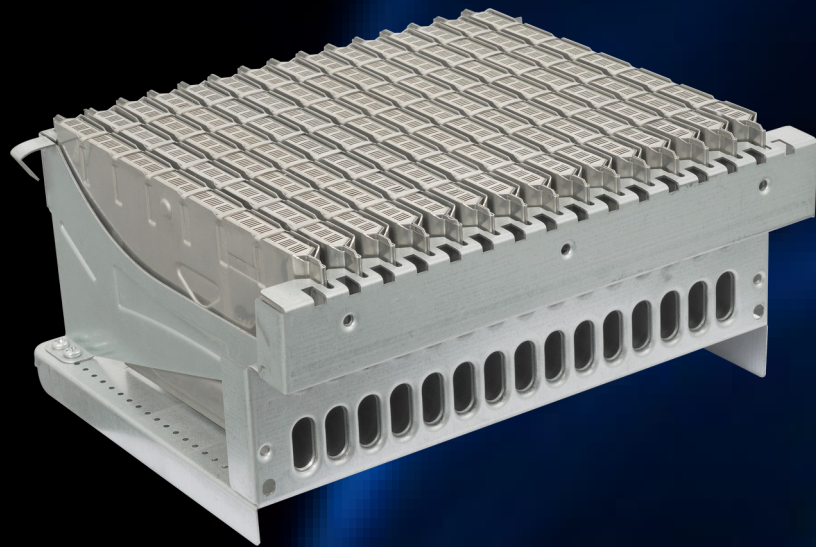
- Ultra low Nox(less than 30mg/KWh), fully match CE standard, Suitable for models with a capacity of 20-35 kW, with strong single-panel thermal load capacity.

Parameters

Dimension	192(W)×141(D) mm
Installation distance	185 mm
Material	#201 Stainless steel
Applicable gas source	NG or LPG

LEAN-RICH COMBUSTION BURNER

JSQ30-QG-0.7P



Features

- Ultra low Nox(less than 30mg/KWh), fully match CE standard, suitable for the appliance with capacity not more than **32kW**.

Parameters

Dimension	192(W)×141(D) mm
Installation distance	185 mm
Material	#201 Stainless steel and Galvanized sheet
Application gas source	NG or LPG

LEAN-RICH COMBUSTION COMPACT DESIGN UNIT

JSQ-QG30-15PG



Features

- Precision Design, excellent structure, low surface temperature, low CO emissions, low combustion noise, suitable for models ranging from **24 to 35 kW**.

Parameters

Material	Compact design, big combustion chamber
Application gas source	NG or LPG

COMBUSTION COMPACT DRY LOW CO BURNERS

JSQ30-QP-GZ6



Features

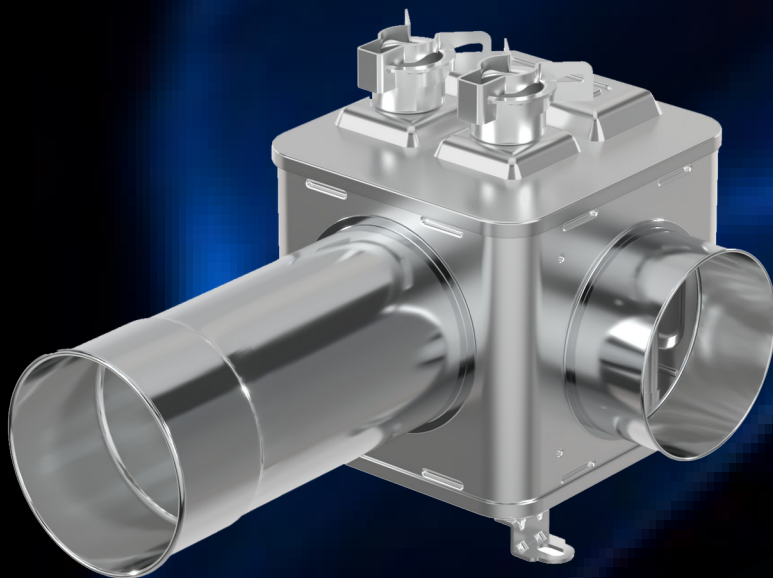
- Avoids the risk of water tank coil leakage, easy to install, low surface temperature rise, low CO emissions, low combustion noise, suitable for models ranging from 12 to 30 kW.

Parameters

Dimension	202×134×264 mm
Installation distance	182 mm
Material	#201 Stainless steel
Applicable gas source	NG or LPG

TUBE COLUMN SECONDARY HEAT EXCHANGER

JSQ30LN-GZX



Features

- Compact size, corrosion-resistant, fully brazed for leak prevention, with thermal efficiency up to 103%. The product is suitable for Water Heater and Gas Boiler.

Parameters

Dimension	124×128×241 mm
Installation distance	92 mm
Material	#304 Stainless steel
Applicable gas source	NG or LPG

BURNER FOR GAS BOILER

JS30-RISCIS-07PT



Features

- Modular design, capable of up to 22 burner rows. The universal gas boiler burner has been tested in the market, demonstrating stable performance and a long service life. Available with distributors made of either iron or aluminum.

Parameters

Dimension	352(W)×172(D) mm
Installation distance	341 mm
Material	#201 stainless steel
Applicable gas source	NG or LPG

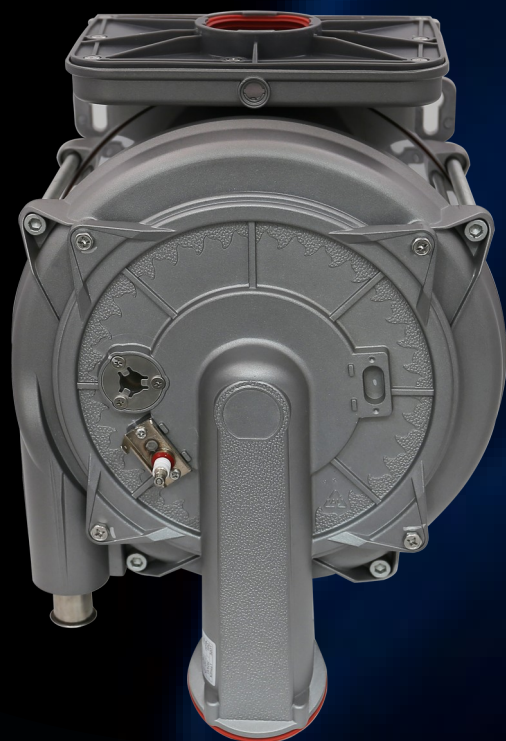
Features

- Corrosion resistance, High heat exchange efficiency, suitable for combi boiler, heat efficiency is more than 110%, low NOx emissions, low CO emissions, low combustion noise.

Parameters

Material	The material of burner and heat exchanger is made of stainless steel.
Applicable gas source	NG or LPG

PRE-MIX CONDENSING BURNER ASSEMBLY



Expansion Tank

Expansion tank products include:

- Square 5L to 10L
- Round 6L to 12L

Technical Features:

- The membrane is made of imported nitrile rubber raw materials.
- Produced using a self-developed unique blending formula.
- It has excellent airtightness, resistance to high and low temperatures, aging resistance, and crack prevention characteristics.



Features

- The inner diaphragm is NBR plastic, passed 100,000 times pulse-shock life test.

Parameters

Dimension	6L: 391×62mm 8L: 391×76mm 10L: 391×87mm 12L: 391×103mm
Material	1.8mm Galvanized sheet surface treatment: powder coated

ROUND EXPANSION WATER TANK

Y-6L 8L 10L 12L



SQUARE EXPANSION WATER TANK

F-Z-6L 8L



Features

- The inner diaphragm is NBR plastic, passed 100,000 times pulse-shock life test.

Parameters

Dimension	6L: 490×200×62mm 8L: 490×200×80mm
Material	2.0mm Galvanized sheet surface treatment : powder coated

After many years of experience with water heaters and wall-mounted boilers, including burners and other components, we now have the capability to provide CKD (Completely Knocked Down) and SKD (Semi Knocked Down) kits to international customers. We offer complete solutions—just let us know your needs, and we will provide the following options:

1. CKD (Completely Knocked Down) Kits:

1. **Features:** All parts are fully disassembled and packed for convenient transportation and assembly.
2. **Services Provided:** We provide a complete assembly manual and technical support to ensure smooth assembly and use.

2. SKD (Semi Knocked Down) Kits:

1. **Features:** Some parts are pre-assembled, requiring only minor assembly at the destination.
2. **Services Provided:** We provide partially assembled equipment and detailed assembly instructions to ensure fast installation and efficient use.

3. Complete Product Solutions:

1. **Features:** Provides a full system of water heaters and wall-mounted boilers, including all related accessories and components, configured and inspected according to your requirements.
2. **Services Provided:** We offer one-stop solution, including complete transportation, installation guidance, and after-sales service to ensure the products are successfully put into use.

Please provide your specific demand and technical requirements, and we will tailor the most suitable solution for you, offering comprehensive support and service.

Nature Exhaust

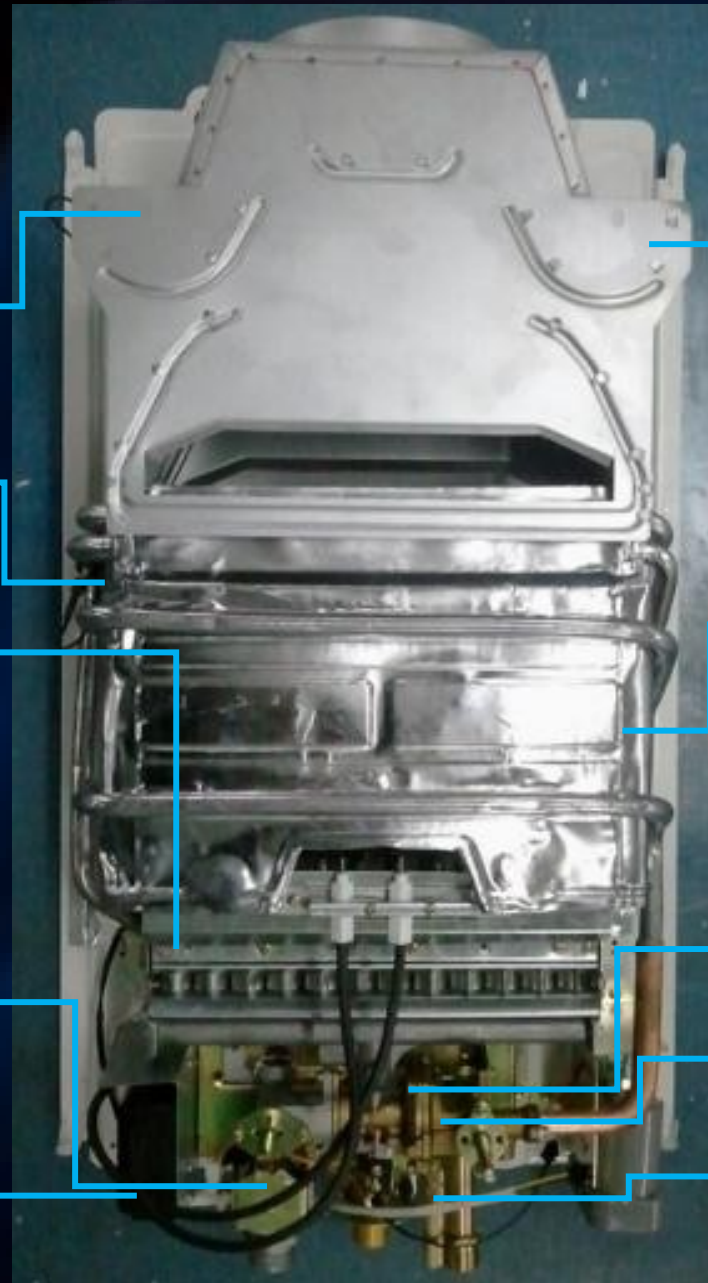
Flue - blocked safety device
(Thermostat)

Over-temperature protection device
Overheat safety protection 90°C

Burner
New T Type burner.
High efficiency 86%

Safe- earthing

PCB:
EN298 testing qualified .
Safety and reliable



Chimney
Special design is to anti-counter flow

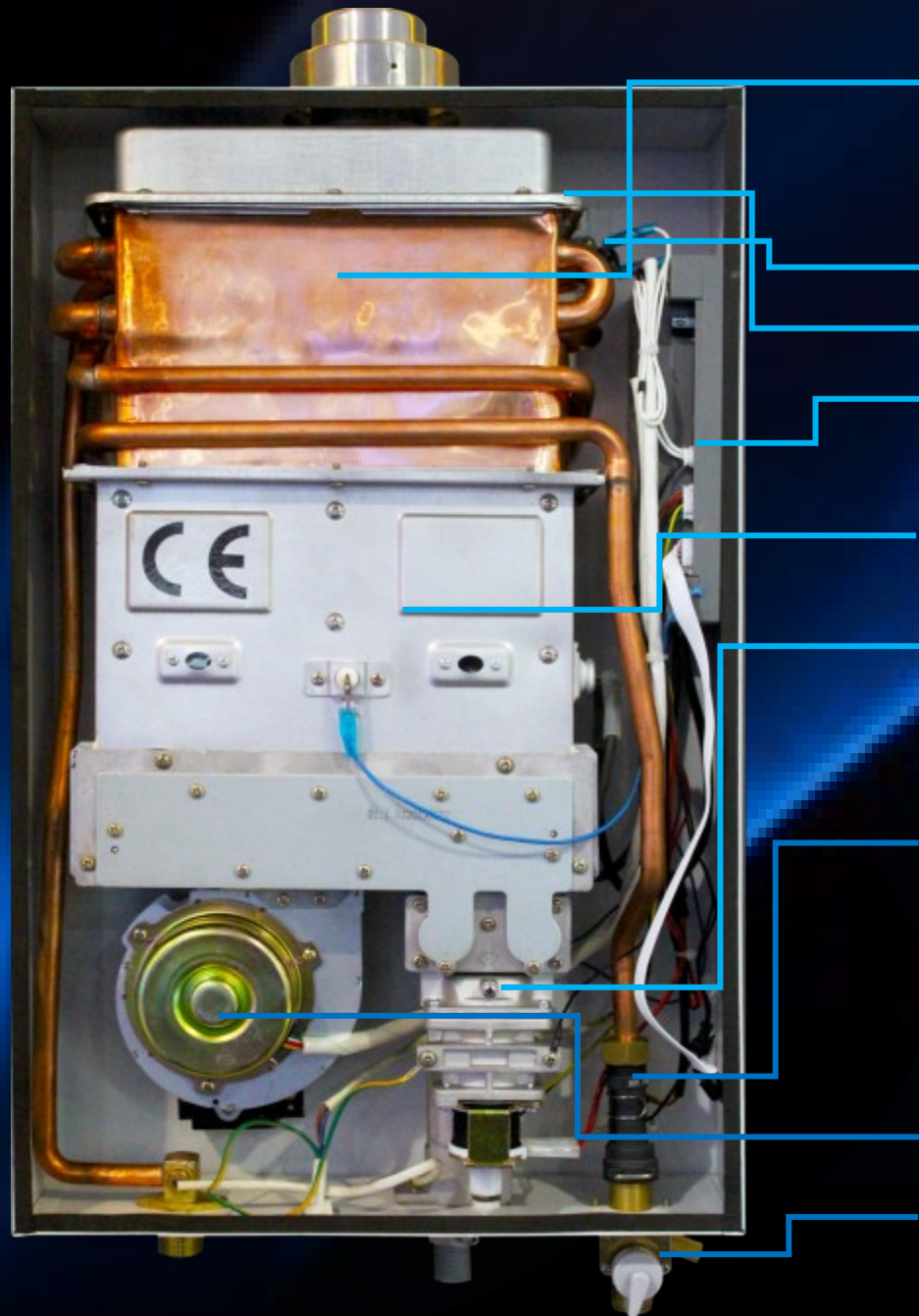
Heat exchanger
Cooper heat exchanger
(2.5kg/10L; 3.0KG/12L)

Gas pressure detection connector
Easy to check gas pressure

Water-gas linkage valve

Water pressure release device

Force Exhaust



Heat exchanger
Oxygen-free copper
High efficiency 88%
Excellent anti - bacterial effect:
Environmental friendly and health for user

Over-temperature protection device

Air pressure switch
Anti-counter flow and Anti-blocked

PCB:
EN298 testing qualified .
Safety and reliable

Burner:
15 burners and low CO

Gas proportional valve:
Intelligent 3-stage subsection combustion with
features of stable flame and saving energy

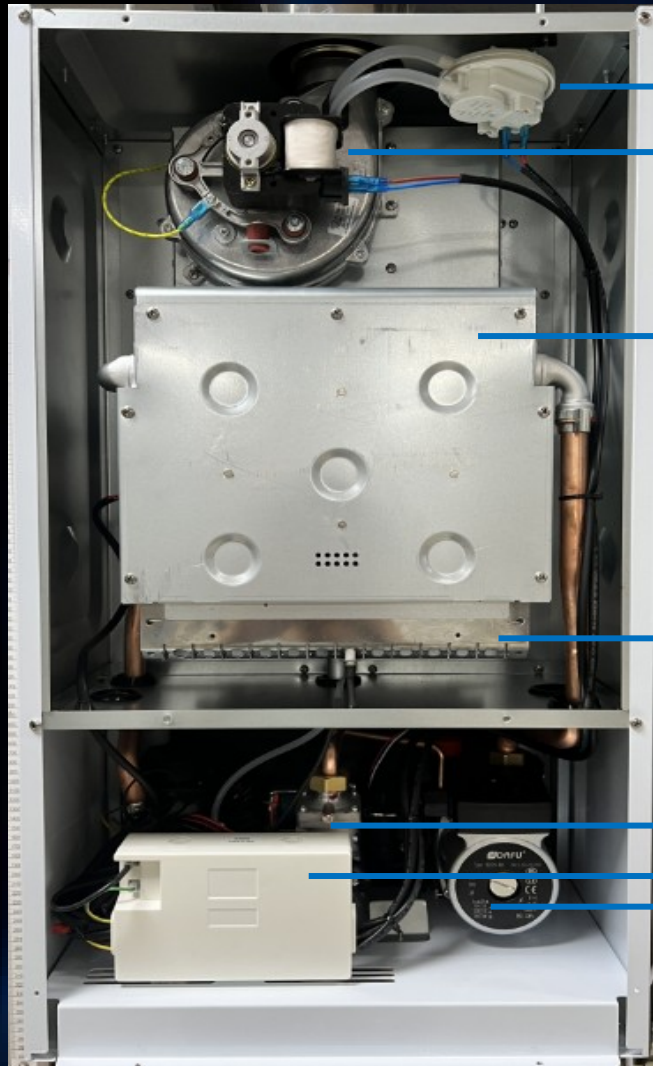
Precise water flow sensor
0.01 MPa Low water pressure start-up

Brushless DC Motor
Stepless speed regulating

Water pressure release device

HAODI 豪帝

Atmospheric combustion wall-mounted boiler



Exhaust fan with long life

Air pressure switch
Anti-counter flow and Anti-blocked

Heat exchanger
*Copper with special surface coating
Excellent anti - bacterial effect:
Environmental friendly and health for user
Anti-scale technology*

Burner:
low CO & less combustion sound

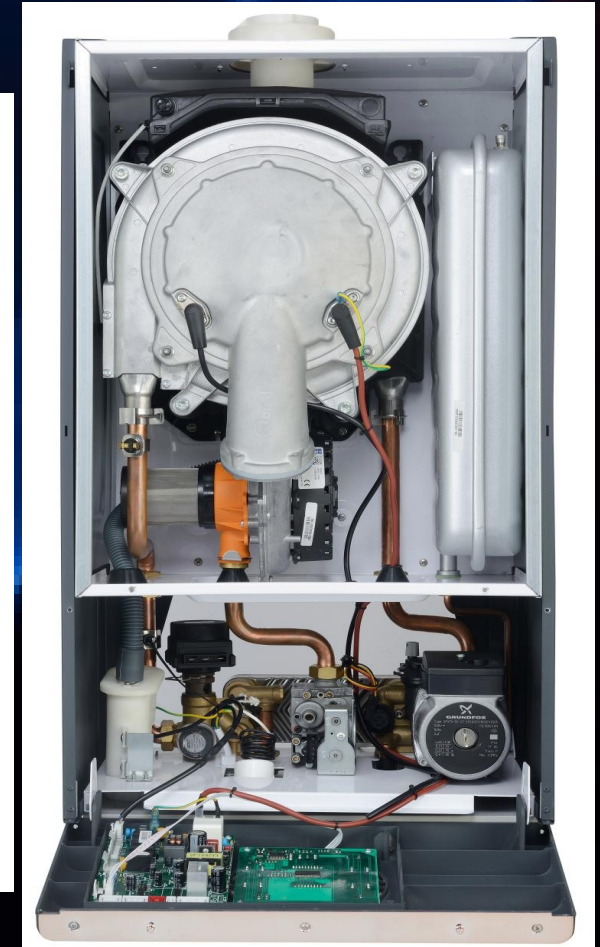
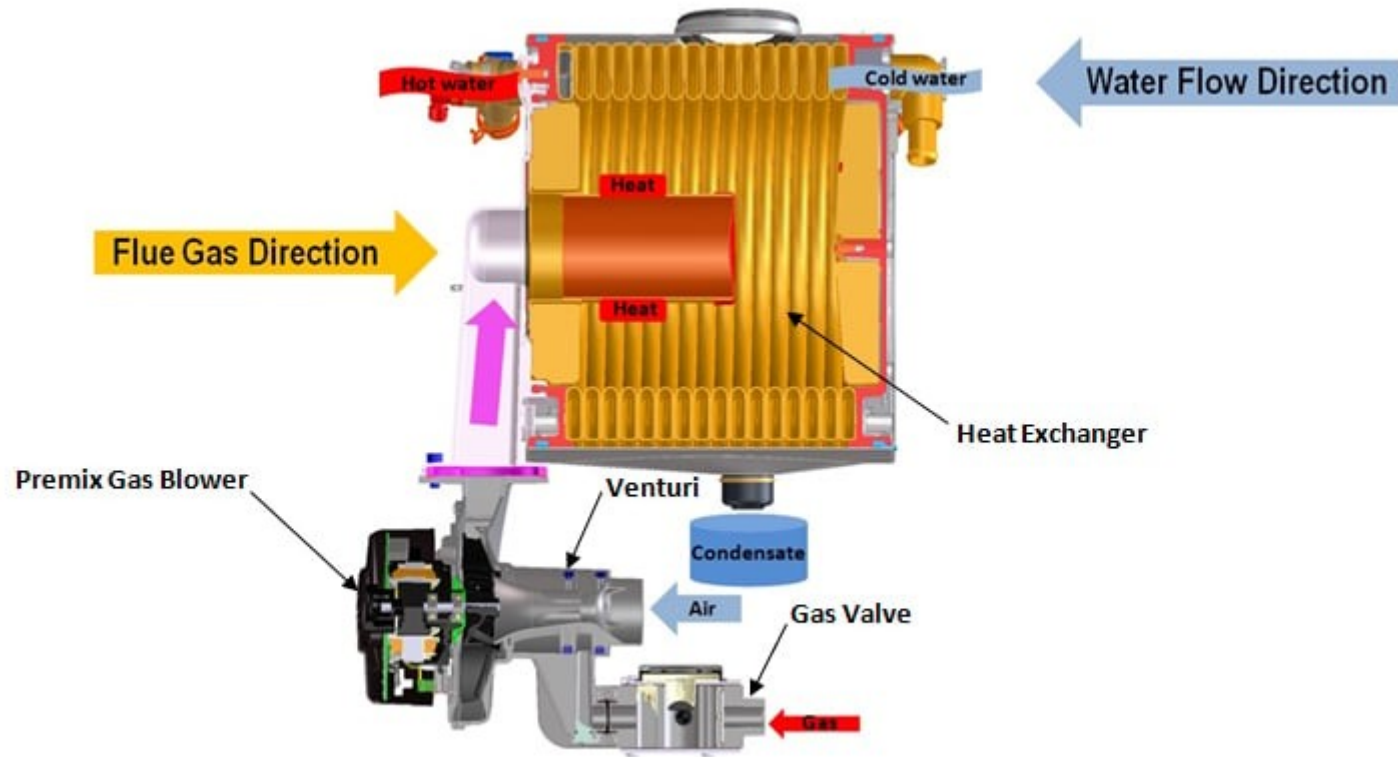
Gas proportional valve:
*Intelligent subsection combustion with
features of stable flame and saving energy*

PCB:
*EN298 testing qualified .
Safety and reliable*

Circulation bump

HAODI 豪帝

Premix condensing
wall-mounted gas boiler



HAODI 豪帝

ZHONGSHAN HAODI ELECTRIC CO.,LTD.

ADD : No. 27, Chengye Avenue, Dacen Industrial Zone, Huangpu Town,
Zhongshan City, Guangdong Province, China

MOBILE : +86-13824708692

Attn: Danny

Email : danny@haodi.ltd

Business WeChat



E-catalogue



Company presentation

