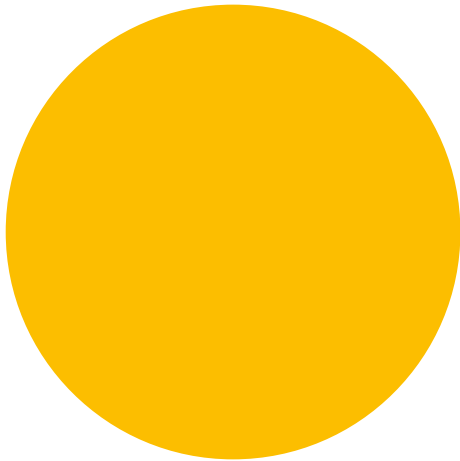


OPTIMIZE
YOUR
PROCESSES



nalishä®
VALVES AND AUTOMATION LIMITED



innovative design

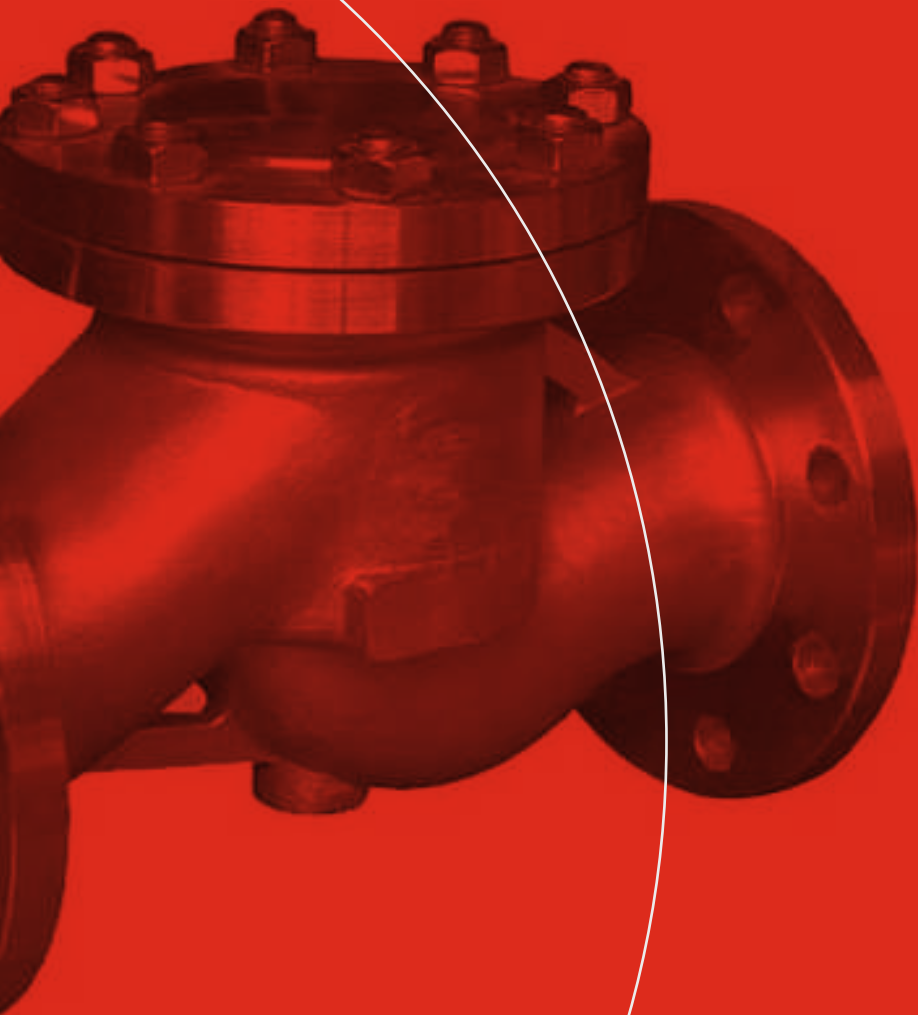
better efficiency

high quality

fast delivery



Leading
the way in
Valve Technology



ABOUT COMPANY

The Story of Nalisha Valves

Started in 1946, Nalisha Valves is a fast growing family-owned business, specialized in the design and manufacturing of a wide array of industrial valves.

With a history of more than 75 years, our company continues to maintain a culture of innovative designs, high quality, fast delivery and technological capabilities. Through its conviction to provide only the finest products and services to match the need of customers, Nalisha has established a strong market position in the country and beyond.

Industry Application

Our valves are designed to cater to the requirements of various industries such as Chemical Industries, Oil industries, Petrochemical Plants, Pharmaceutical Plants, Thermal plants, Textile Industries, Paper, Cement and so on.

Quality you can Trust

Our team of proficient engineers coupled with advanced technology and R&D labs allow us to create competitive solutions for our customers. The result is a state-of-the-art facilities that are designed to guarantee reliable and dynamic manufacturing process: machining assembling, testing, painting and packing.

Quality is important to us, and we promise to deliver best service and support at competitive prices.

Your Reliable Engineering Partner

With a strong network of sales, service and distribution in India, Nalisha is equipped to respond and deliver solutions faster and more efficiently. As an organization, we have made great efforts to optimize the quality process, minimise impact on the environment, and obtain several international certifications that homologate our products. Nalisha Valves and automation LLP is an ISO certified company.

We work closely with our clients to provide them with **tailored solutions in short delivery times.**

What gives us the edge over others

- High Performance Valves
- Cutting edge technology
- Customized Solutions
- Premium quality valves or industrial application
- Cost-effective
- Timely Delivery

INDEX...



1 BALL VALVE
SERIES ...
page 7



3 WAFER CHECK
VALVE SERIES ...
page 9



5 GLOBE VALVES
SERIES ...
page 11



7 LINED VALVES
SERIES ...
page 13



9 P.P VALVE
SERIES ...
page 15



11 SAFETY
VALVE SERIES ...
page 17



2 BUTTERFLY
VALVE SERIES ...
page 8



4 GATE VALVE
SERIES ...
page 10



6 CHECK VALVE
SERIES ...
page 12



8 STRAINER
SERIES ...
page 14



10 MOISTURE
SEPARATOR SERIES ...
page 16



12 GENERAL
VALVE SERIES ...
page 18



BALL VALVE SERIES

Ball valves are generally used for full flow application. There is no pressure drop in full open condition.



Ball Valve - Screwed Ends

Product Details:

Model	- NVAL/BLVS01
Type	- Single Piece/ Three Piece
Design	- ISO 17292/API 6D
M.O.C	- CI/WCB/CF8/CF8M/CF3/CF3M
End-Connection	- Screwed to BSP/NPT/Socket Welded
Ratings	- 150# , 300#
Size	- 6mm to 100mm



Forged Ball Valve

Product Details:

Model	- NVAL/FBLVS02
Type	- 3 Piece
Design	- ISO 17292/API 6D
M.O.C	- A 105/F 304/ F 316
End-Connection	- Screwed to BSP/ NPT/ Socket welded
Ratings	- 800#
Size	- 15mm to 50mm



Ball Valve Flanged Ends

Product Details:

Model	- NVAL/BLVF03
Type	- 1 Piece/ 3 Piece
Design	- ISO 17292/API 6D
M.O.C	- CI/WCB/CF8/CF8M/CF3/CF3M
End-Connection	- Flanged to 150#, 300#, 600#, BS-10, E- table, F- Table
Ratings	- 150#, 300#, 600#
Size	- 15mm to 300mm



BALL VALVES SERIES

Multiport Ball valves are basically used to connect more than two lines. Line selection can be done based on different positions.



Two Piece Ball Valve Flanged Ends

Product Details:

Model	- NVAL/BLVF04
Type	- 2 Piece
Design	- ISO 17292/API 6D
M.O.C	- CI/ WCB/ CF8/ CF8M/ CF3/ CF3M
End-Connection	- Flanged to 150#, 300#, 600#, BS-10, E-table, F-table
Ratings	- 150#, 300#, 600#
Size	- 15mm to 300mm



3-4 Way Ball Valve Screwed

Product Details:

Model	- NVAL/BLVTS05
Type	- 3 Piece
Design	- ISO 17292/API 6D
M.O.C	- WCB/CF8/CF8M
End-Connection	- BSP / NPT
Ratings	- 150#
Size	- 15mm to 100mm



3-4 Way Ball Valve Flanged Ends

Product Details:

Model	- NVAL/BLVTF06
Type	- 3 Piece
Design	- ISO 17292/API 6D
M.O.C	- WCB/CF8/CF8M
End-Connection	- Flanged to 150#
Ratings	- 150#
Size	- 15mm to 200mm



BUTTERFLY VALVE SERIES

Butterfly valves are generally used for low pressure application. They are also quite cost effective and easy to mount between two flanges.



Wafer Type Butterfly Valve

Product Details:

Model	- NVAL/WBV07
Type	- Moulded Design
Design	- BSEN 593:2017/API609
M.O.C	- CI/WCB/CF8/CF8M
End-Connection	- Wafer to Suit ANSI 16.5
Ratings	- PN10, PN16, PN20
Size	- 40mm to 600mm



Lug Type Butterfly Valve

Product Details:

Model	- NVAL/LBV08
Type	- Lug Type
Design	- BSEN 593:2017/API609
M.O.C	- CI/WCB/CF8/CF8M
End-Connection	- Wafer to Suit ANSI 16.5
Ratings	- PN10, PN16, PN20
Size	- 50mm to 1000mm



Flanged Type Butterfly Valve

Product Details:

Model	- NVAL/FBV09
Type	- Moulded Design
Design	- BSEN 593:2017/API609
M.O.C	- CI/WCB/CF8/CF8M
End-Connection	- Flanged to Suit ANSI 16.5
Ratings	- PN10, PN16, PN20
Size	- 50mm to 600mm



WAFER CHECK VALVE SERIES

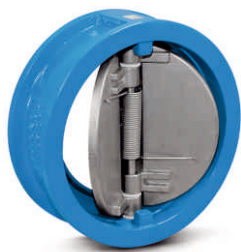
Wafer check valve are used for cost effective solution and can be mount easily between two flanges.



Wafer Check Valve

Product Details:

Model	- NVAL/WCV10
Type	- Single plate wafer type
Design	- API 6D/API 594
M.O.C	- CI/ WCB/ CF8/ CF8M/ SS 304L/ 55316L
End-Connection	- Wafer to Suit 150#, Table E , 300#/ 600#
Ratings	- PN10, PN16, PN20, PN40
Size	- 40mm to 600mm



Dual Plate Check Valve

Product Details:

Model	- NVAL/DPCV11
Type	- Dual Plate Type
Design	- API 6D/API 594
M.O.C	- CI/WCB/CF8/CF8M/CF3/CF3M
End-Connection	- Wafer to suit 150# / 300# / 600#
Ratings	- PN10, PN16, PN20
Size	- 40mm to 600mm



Disc Check Valve

Product Details:

Model	- NVAL/DCV12
Type	- Disk Type
Design	- EN558
M.O.C	- CF8/ CF8M
End-Connection	- Wafer to Suits 150#
Ratings	- PN10, PN16, PN20, PN40
Size	- 15mm to 200mm



GATE VALVE SERIES

Gate valves are used for heavy duty. Pressure drop in gate valve is very low.



Forged gate Valve

Product Details:

Model	- NVAL/FGVS13
Type	- OS&Y
Design	- API600 /API602
M.O.C	- ASTM A 602, F 304, F 316 , F11, F22
End-Connection	- Screwed or Socket welded
Ratings	- 800#, 1500#, 2500#
Size	- 15mm to 50mm



CastIron/ Steel Gate Valve

Product Details:

Model	- NVAL/GVF14
Type	- OS&Y
Design	- API600/IS14846
M.O.C	- CI/WCB/CF8/CF8M/CF3/CF3M/ WC6/WC10
End-Connection	- Flanged End, Butt Welded Ends
Ratings	- 150#, 300#, 600#, 125 #, PN10, PN16
Size	- 25 mm to 500mm



Knife Edge Gate Valve

Product Details:

Model	- NVAL/KGV/15
Type	- Unidirectional / Bidirectional
Design	- MSS SP 81
M.O.C	- CI/WCB/CF8/CF8M/CF3/CF3M
End-Connection	- Wafer To Suit 150#
Ratings	- 150#, 300#
Size	- 50 mm to 600mm



GLOBE VALVES SERIES

Globe valve is used for flow control application. Throttling in flow curve is achieved in globe valves.



Forged Steel Globe

Product Details:

Model	- NVAL/FGLVS16
Type	- Globe
Design	- BS 1875 /API 602
M.O.C	- ASTM A 105, F 304, F 316, F11, F22
End-Connection	- Screwed or Socket Weld
Ratings	- 800#, 1500#, 2500#
Size	- 15 mm to 50mm



Cast Iron / Steel Globe Valve

Product Details:

Model	- NVAL/GLVF17
Type	- Globe 150#
Design	- BS 1875 /API 623
M.O.C	- CI/ WCB/ CF8/CF8M
End-Connection	- Flanged End, Butt Welded Ends
Ratings	- 150#, 300#, 600#, 125#, PN40
Size	- 25mm to 400mm



Cast Iron / Steel Globe Valve

Product Details:

Model	- NVAL/GLVF18
Type	- Globe PN40
Design	- BS 1875 /API 623
M.O.C	- CI/ WCB/ CF8/CF8M
End-Connection	- Flanged End, Butt Welded Ends
Ratings	- 150#, 300#
Size	- 25mm to 400mm



CHECK VALVE SERIES

This series is for heavy duty application which can withstand higher temperature. Also check valves are generally used to prevent back pressure.



Forged Piston Lift Type Check Valve

Product Details:

Model	- NVAL/FLCVS19
Type	- Lift Type
Design	- BS 1868 /API 602
M.O.C	- A105/F304/F316/F11/F22
End-Connection	- Screwed or Socket weld
Ratings	- 800#, 150#, 2500#
Size	- 15mm to 50mm



Cast Iron/ Steel Piston lift Type Check Valve

Product Details:

Model	- NVAL/LCVF20
Type	- Lift Type
Design	- BS 1868 /API 594
M.O.C	- CI/WCB/CF8/CF8M/CF3/CF3M
End-Connection	- Flanged Ends & Butt Weld Ends
Ratings	- 150#
Size	- 25mm to 200mm



Cast Steel Swing type Check Valve

Product Details:

Model	- NVAL/SCVF21
Type	- Swing Type
Design	- BS 1868 /API 594
M.O.C	- CI/WCB/CF8/CF8M/CF3/CF3M/ WC6/WC9
End-Connection	- Flanged Ends & butt weld Ends
Ratings	- 150#, 300#, 600#
Size	- 25mm to 500mm



LINED VALVES SERIES

Lined valves are used in highly corrosive environment. They are also used for low pressure applications.



Lined Ball Valve

Product Details:

Model	- NVAL/LBLVF22
Type	- 2 Piece
Design	- ISO 17292
M.O.C	- WCB/CF8/CF8M/S.G IRON
End-Connection	- Flanged to 150#
Ratings	- PN10
Size	- 15mm to 200mm



Lined Butterfly Valve

Product Details:

Model	- NVAL/LWBVF23
Type	- Wafer
Design	- BSEN:593
M.O.C	- WCB/CF8/CF8M/S.G IRON
End-Connection	- Wafer to suit ANSI 16.5
Ratings	- PN10
Size	- 15mm to 600mm



Lined Ball Type Check Valve

Product Details:

Model	- NVAL/LBCV24
Type	- Ball Type Check Valve
Design	- B16.34/EN 122 66
M.O.C	- WCB/CF8/CF8M/S.G IRON
End-Connection	- Flanged to suit ANSI 16.5
Ratings	- PN10
Size	- 25mm to 200mm



STRAINER SERIES

Strainer are used for filtration purpose. Different impurities can be removed from process with appropriate selection of screen element



Cast Iron/Steel Y- type Strainer

Product Details:

Model	- NVAL/YSF25
Type	- Y-Type
Design	- NEIL YS01
M.O.C	- CI/WCB/CF8/CF8M/CF3/CF3M
End-Connection	- Screwed End/ Socket Welded/Flanged
Ratings	- 150#
Size	- 15mm to 600mm



Fabricated Strainer

Product Details:

Model	- NVAL/FBSF26
Type	- Basket
Design	- NEIL/FS01
M.O.C	- M.S/ CF8/CF8M
End-Connection	- Flanged End
Ratings	- 150#, 300#
Size	- 25mm to 600mm



Cast-Iron/ Steel POT-Type Strainer

Product Details:

Model	- NVAL/BUF27
Type	- Bucket Type
Design	- NEIL/BS01
M.O.C	- CI/ WCB/ CF8/ CF8M
End-Connection	- Flanged End
Ratings	- PN10/ PN16/ 150#
Size	- 25mm to 300mm



P.P VALVE SERIES

P.P valves are used for corrosive and agriculture application. They are also used in low pressured applications.



P.P Three Piece Ball Valve

Product Details:

Model	- NVAL/PBLVS28
Type	- Three Piece
Design	- ISO 17292
M.O.C	- P.P
End-Connection	- Screwed End
Ratings	- PN10
Size	- 15mm to 100mm



P.P Three Piece Ball Valve

Product Details:

Model	- NVAL/PBLVF29
Type	- Three piece
Design	- ISO 17292
M.O.C	- P.P
End-Connection	- Flanged End
Ratings	- PN10
Size	- 15mm to 300mm



P.P Diaphragm

Product Details:

Model	- NVAL/PDV30
Type	- Diaphragm weir type
Design	- Diaphragm weir type
M.O.C	- P.P
End-Connection	- Flanged End
Ratings	- PN10
Size	- 15mm to 100mm





MOISTURE SEPARATOR SERIES

Moisture Separators are used for removal of moisture from the line. Valve is provided below to drain at regular intervals.



Moisture Separator - Screwed Ends

Product Details:

Model	- NVAL/MS043
End-Connection	- Screwed End To BSP
Type	- Moisture Separator
M.O.C	- Mild Steel
Size	- 1/2" to 2"



MS body Moisture Separator- Flanged Ends

Product Details:

Model	- NVAL/MS044
End-Connection	- Screwed End To BSP
Type	- Moisture Separator
M.O.C	- Mild Steel
Size	- 1/2" to 2"



MS body Metal Lip Drain Bowl

Product Details:

Model	- NVAL/DB45
End-Connection	- Drain Bowl
Body/Connector	- MS/Brass/SS
Size	- 1/2" to 2"



SAFETY VALVES SERIES

Safety valve is used to release excess pressure in order to prevent dangerous situations or accident.



Safety Valve Srewed Ends

Product Details:

Model	- NVAL/SFV46
Type	- Angle Type
Design	- API 520/ API 527
M.O.C	- WCB/ CF8/ CF8M /CF3/ CF3M
End-Connection	- Screwed to BSP/ NPT/ Socket Weld
Ratings	- 150#, 300#, PN10, PN16
Size	- 15mm to 50mm



Open Type Safety Valve Srewed Ends

Product Details:

Model	- NVAL/SFV47
Type	- Open Type
Design	- API 520/ API 527
M.O.C	- WCB/ CF8/ CF8M/ GUN METAL
End-Connection	- Screwed to BSP/ NPT/ Socket Weld
Ratings	- 150#, 300#, PN10, PN16
Size	- 15mm to 50mm



Angle Type Safety Valve Flanged Ends

Product Details:

Model	- NVAL/SFV48
Type	- Angle Type
Design	- API 520/ API 527
M.O.C	- WCB/ CF8/ CF8M /CF3/ CF3M
End-Connection	- Flanged End
Ratings	- 150#, 300#, BS10, E-Table, F-Table
Size	- 25mm to 200mm



GENERAL VALVE SERIES

General valve series consist of wide variety of valves. This consist of different valves that can suit different applications.



**Spherical DISC Investment Casting Wafer Type
Butterfly Valve**

Product Details:

Model	- NVAL/SBFV/31
Type	- Wafer Type
Design	- BSEN 593:2017/API 609
M.O.C	- CF8/ CF8M/ CF3/ CF3M
End-Connection	- Wafer to suit ANSI B16.5
Ratings	- 150#
Size	- 40mm to 300mm



**S.S Investment Casting Thermodynamic
Steam Trap**

Product Details:

Model	- NVAL/TDST32
Type	- Steam Trap
Design	- ISO 6552:1980 (EN)
M.O.C	- CA 15/ CF8/ CF8M
End-Connection	- Screwed BSP
Ratings	- 150#
Size	- 15mm to 25mm



S.S Needle Valve

Product Details:

Model	- NVAL/NVS33
Type	- Needle
Design	- MANUFACTURER STANDARD
M.O.C	- AISI304/ AISI 316/304L/316L
End-Connection	- Screwed/ S.W./ NPT Threaded
Ratings	- 150#
Size	- 6mm to 50mm



GENERAL VALVE SERIES

General valve series consist of wide variety of valves. This consist of different valves that can suit different applications.



S.S Flush Bottom Tank Valve

Product Details:

Model	- NVAL/FTV34
Type	- Y- Type Globe valve
Design	- MANUFACTURER STANDARD
M.O.C	- CF8/ CF8M/ CF3/ CF3M
End-Connection	- Flanged End to B16.5 RF, 150#
Ratings	- 150#
Size	- 25mm to 150mm



S.S Flush Bottom Ball Valve

Product Details:

Model	- NVAL/FBV35
Type	- FLOATING BALL
Design	- MANUFACTURER STANDARD
M.O.C	- CF8/ CF8M/ CF3/ CF3M
End-Connection	- Flanged End to ASA 150#
Ratings	- 150#
Size	- 15mm to 150mm



Investment Casting Sight Flow Indicator

Product Details:

Model	- NVAL/SFI36
Type	- Sight Flow Indicator
Design	- MANUFACTURER STANDARD
M.O.C	- CF8/ CF8M/ CF3/ CFM
End-Connection	- Flanged End
Ratings	- PW10
Size	- 15mm to 200mm



GENERAL VALVE SERIES

General valve series consist of wide variety of valves. This consist of different valves that can suit different applications.



Investment Casting Double Window Sight Glass

Product Details:

Model	- NVAL/DWS 37
Type	- Double Window
Design	- PN40/150#
M.O.C	- CF8/ CF8M/ CF3/ CF3M
End-Connection	- Flanged End to ANSI B16.5 RF 150#
Ratings	- 150#
Size	- 15mm to 100mm



Cast Iron Self lubricated Plug Valve

Product Details:

Model	- NVAL/LPV38
Type	- Plug valve
Design	- API 6D/ISO14313
M.O.C	- CI/WCB/SS 304/SS 316
End-Connection	- Flanged End
Ratings	- 125#, 150#
Size	- 25mm to 200mm



S.S Gauge Glass

Product Details:

Model	- NVAL/CG39
Type	- Gauge Glass
Design	- MANUFACTURER STANDARD
M.O.C	- SS 304/ SS 316
End-Connection	- Flanged End/ Screwed To BSP
Ratings	- 150#
Size	- 15mm to 25mm



GENERAL VALVE SERIES

General valve series consist of wide variety of valves. This consist of different valves that can suit different applications.



Bar Stock Non-Return Valve

Product Details:

Model	- NVAL/NRV40
Type	- Horizontal/Vertical
Design	- MANUFACTURER STANDARD
M.O.C	- SS304/ SS316/ SS202
End-Connection	- Socket/ Screwed
Ratings	- 150#
Size	- 6mm to 50mm



Investment Casting Double window Teflon Lined Sight Glass

Product Details:

Model	- NVAL/LDW41
Type	- Double Window Teflon Lined
Design	- MANUFACTURER STANDARD
M.O.C	- S.G Iron/WCB
End-Connection	- Flanged End
Ratings	- PN10
Size	- 25mm to 100mm



Pulp Valve

Product Details:

Model	- NVAL/WP42
Type	- Wafer Type
Design	- MANUFACTURER STANDARD
M.O.C	- CI/SS
End-Connection	- Wafer to suit ANSI 16.5
Ratings	- PN10
Size	- 50mm to 300mm



GENERAL VALVE SERIES

General valve series consist of wide variety of valves. This consist of different valves that can suit different applications.



Pinch Valves

Product Details:

Model	- NVAL/PV49
Design	- NVAL/49
M.O.C	- Cast Iron
End-Connection	- Flanged End
Ratings	- PN10, PN16
Size	- 15mm to 200mm



Float Valves

Product Details:

Model	- NVAL/FLV50
Type	- Horizontal/ Vertical
Design	- NVAL/50
M.O.C	- Cast Steel/ SS304/ SS316
End-Connection	- Screwed End
Ratings	- PN10, PN16
Size	- 15mm to 80mm



Alluminium butterfly Valves

Product Details:

Model	- NVAL/ALBL51
Type	- Wafer Type
Design	- API 609/ EN 558
M.O.C	- Aluminium
End-Connection	- Wafer to Suit
Ratings	- PN10, PN16
Size	- 40mm to 200mm



GENERAL VALVE SERIES

General valve series consist of wide variety of valves. This consist of different valves that can suit different applications.



Foot Valves

Product Details:

Model - NVAL/FTV52

Type - Metallic/ Leather

Design - IS 4038

M.O.C - GM/ SS/ Cast Iron

End-Connection - Screwd/ Flanged End

Ratings - PN10, PN16

Size - 15mm to 300mm



Diaphragm Valves

Product Details:

Model - NVAL/FLV53

Design - BS EN 13397

M.O.C - CI/ WCB/ CF8/ CF8M/ CF3/ CFM3

End-Connection - Screwed/ Flanged End

Ratings - PN10, PN16

Size - 25mm to 300mm



Air Valves

Product Details:

Model - NVAL/ALBL54

Type - Single/ Double/ Kinetic

Design - IS 14845

M.O.C - Cast Iron

End-Connection - Flanged End 150#, IS, Table-E, Table-F

Ratings - PN10, PN16

Size - 15mm to 200mm

www.nalishavalves.com

Regd. & Corp. Office

Nalisha Valves and Automation Limited

Plot No. 37, Road No. 1/A, Kathwada GIDC,
Kathwada, Ahmedabad - 382430, Gujarat, India.

Contact Us

+91-29701203 / 22817855
+91-9327727340 / 9687611689
info@nalishavalves.com

