

QM
PRODUCT
CATALOGUES

Contents

About QM Medical

02

Honorary certificates

04

Product Systems

05



Laser Hair Removal System	06
IPL/OPT System	18
Multi-laser Platform	24
Q-switched Nd: YAG Laser System	27
Pico Laser System.....	33
HIFU System	36
Body Slimming System	47
CO ₂ Fractional Laser System.....	57
Facial Care System	64
Skin & Body analyzer System	71

About QM Medical

Beijing QM Medical Co., Ltd. is a global professional manufacturer and supplier for aesthetic medical devices and the accessories. In past years, we have services for numerous factories and trading companies in domestic market, while nowadays we aim to further expand to overseas market working to serve the varied and growing needs of the global customers around the world





We INSIST on the following principles during our practice:

- Honest and Trust
- Service Oriented
- Safety, Quality and Effectiveness Guaranteed

To keep up with the changing world, QM Medical will constantly apply the newest technology and update service to gear to international standards, so that we can go further on the stage of global and help customers get win and sustainable development!

We are expecting to build a Long-term and Solid Cooperationship with you!

Our websites: www.qm-laser.com www.qmmedical.com

Honorary certificates



Laser Hair Removal System



Q-switched
Nd:YAG Laser
System



Body Slimming
System



IPL/OPT/E-light
System



Product Systems



HIFU System



Co2 Fractional
Laser System



Facial care
System

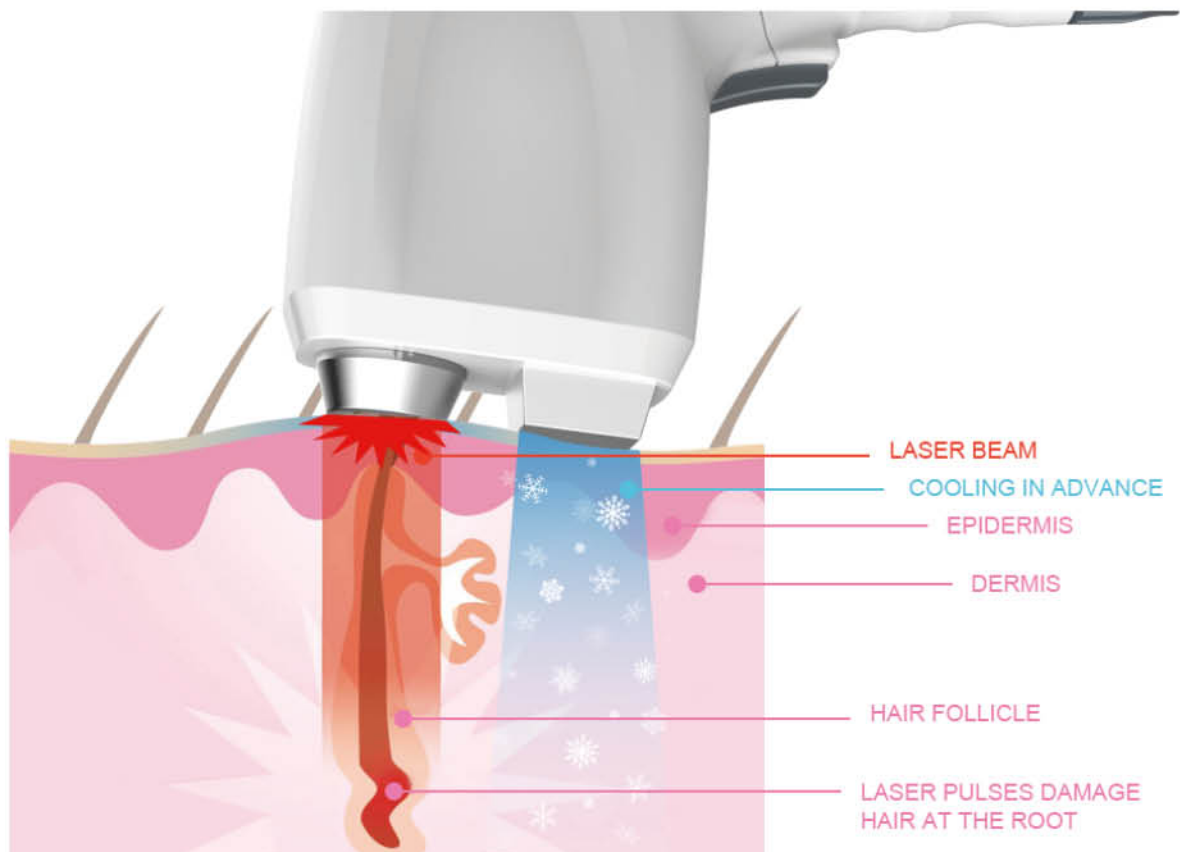
1 LASER HAIR REMOVAL SYSTEM



Working Principle

Diode laser hair removal technology is based on the selective dynamics of light and heat. The laser goes through the skin surface to reach the root of hair follicles; light can be absorbed and converted into heat damaged hair follicle tissue, so that hair loss regeneration without injury surrounding tissue. Slight pain, easy operation, the most safe, technology for permanent hair removal now.

It is performed using gold standard 808nm diode laser technology, with energy penetrates deep into the dermis with high average power and a rapid 10 pulse-per-second repetition rate to heat the hair shaft and hair follicle, rather than destroy the oxygen organization around hair follicle. Meanwhile, contacting surface cooling technology applied on the Sapphire Dual-Chill Tip can eliminate the heat effect attributed to optical energy, greatly improving both the treatment performance and safety.



Applications:

For any unwanted hairs on areas of face, arms, armpits, chest, back, bikini, legs and etc.
(including light, blond and thin hairs)

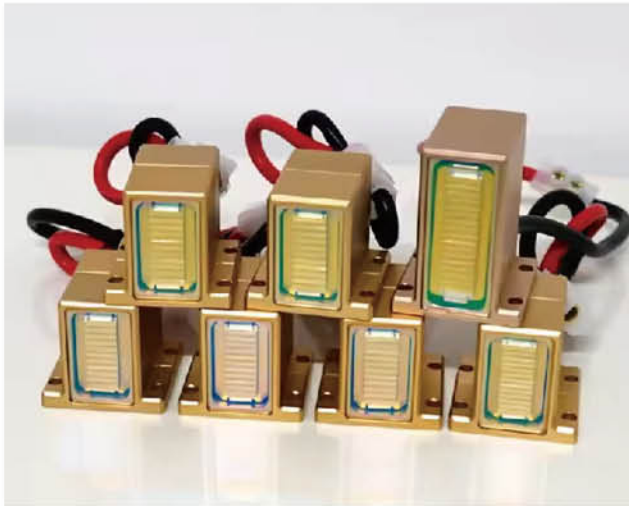


Advantages of our Diode laser :

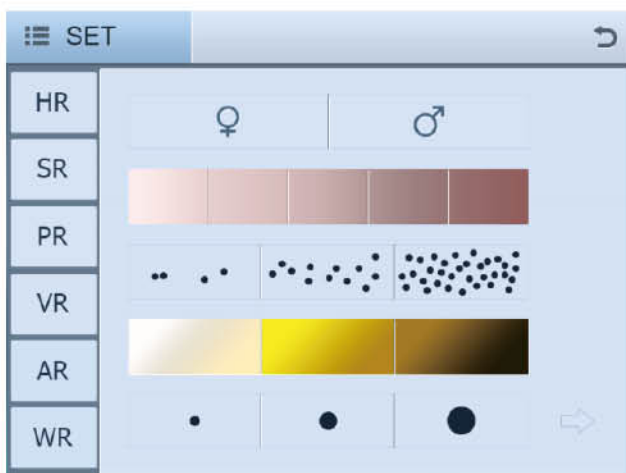
- From Shell to Handle are Latest design and brand New!
- Dual-Chill Design on the Laser handle, it eliminate the heat effect attributed to optical energy , greatly improving both treatment Performance and safety.



- USA Coherent Laser Emitter achieve fantastic result and last long lifetime!



- 10.4" TFT true color touch screen,Friendly software,16 languages for option





QM-808A



QM-808A+

Model	QM-808A	QM-808A+
Laser Type	Diode Laser	Diode Laser
Laser Stacks Power	800W-1000W for option	1000W-1600W for option
Wavelength (Spectrum)	808nm/755nm+808nm+1064nm	808nm/755nm+808nm+1064nm
Energy Density (Fluence)	100J/cm ² (Continuously adjustable)	100J/cm ² (Continuously adjustable)
Spot Size	12*20mm (standard)	12*20mm (standard)
	12*35mm (for option)	12*35mm (for option)
Pulse Repetition Rate	1-10Hz	1-10Hz
Pulse Duration	10-300ms	10-300ms
Pulses	Single	Single
Cooling	• Continuous Sapphire contact cooling(-5°~1°)	• Continuous Sapphire contact cooling(-5°~1°)
	• Air cooling	• Air cooling
	• Closed water circulation cooling	• Closed water circulation cooling • TEC Semi-conductor cooling
Stand-by Working	Continuously for 20 hours	Continuously for 20 hours
Display	10.4" True Color LCD Touch Screen	10.4" True Color LCD Touch Screen
Electrical Requirements	110/230VAC, 15/20A max., 50/60Hz	110/230VAC, 15/20A max., 50/60Hz
Net Weight	40kgs	55kgs

New Diode Devoting the Fashionable & Energetic Power to you!



QM-808



QM-808+

Model	QM-808	QM-808+
Laser Type	Diode Laser	Diode Laser
Laser Stacks Power	1000-1600W for option	1000-1600W for option
Wavelength (Spectrum)	808nm/Triple-wavelength	808nm/Triple-wavelength
Energy Density (Fluence)	166J/cm ² (Continuously adjustable)	166J/cm ² (Continuously adjustable)
Spot Size	15x15mm + 25x25mm cool head	15x15mm + 25x25mm cool head
Pulse Repetition Rate	1-10Hz	1-10Hz
Pulse Duration	10-400ms	10-400ms
Pulses	Single	Single
Cooling	<ul style="list-style-type: none"> • Continuous Sapphire contact cooling(-5°C ~1°C)• Air cooling • Closed water circulation cooling 	<ul style="list-style-type: none"> • Continuous Sapphire contact cooling(-5°C ~1°C)• Air cooling • Closed water circulation cooling
Stand-by Working	Continuously for 20 hours	Continuously for 20 hours
Display	10.4' True Color LCD Touch Screen	10.4' True Color LCD Touch Screen
Electrical Requirements	110/230VAC, 15/20A max., 50/60Hz	110/230VAC, 15/20A max., 50/60Hz
Net Weight	40kgs	60kgs
Dimensions (WxDxH)	450*550*680 mm	450*550*1280 mm



2 Handles for optional

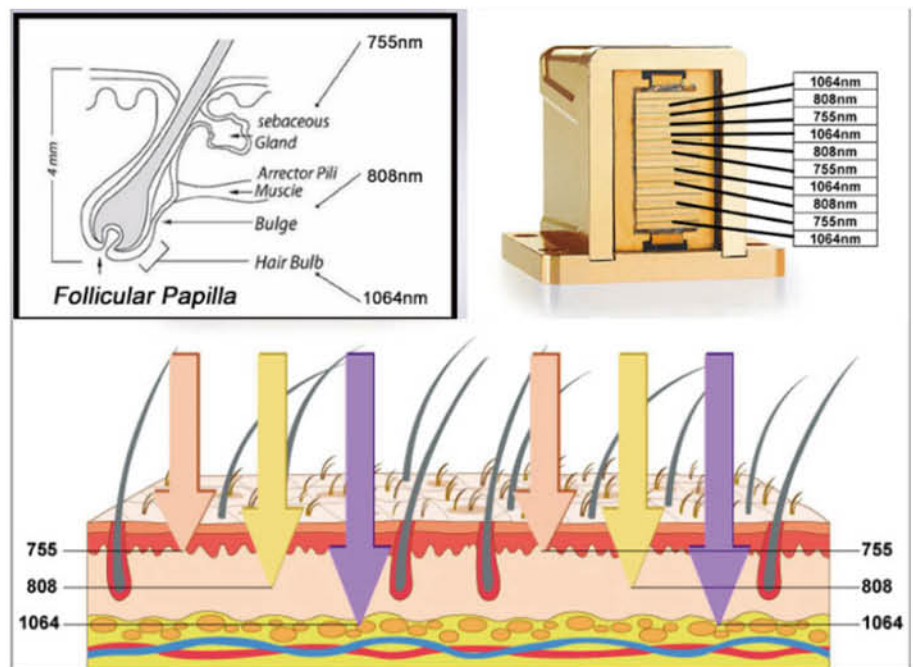


Triple-wavelength Diode laser (755nm+808nm+1064nm)

Applications:

For any unwanted hairs on areas of face, arms, armpits, chest, back, bikini, legs and etc.
(including light, blond and thin hairs)

- The 755nm wavelength offers more powerful energy absorption by the melanin chromophore, making it ideal for the widest range of hair types and color-especially light-colored and thin hair.
- The 808nm wavelength, offers deep penetration of the hair follicle with high average power, a high repetition rate and a large spot size for fast treatment.
- The 1064nm wavelength is characterized by lower melanin absorption, making it a focused solution for darker skin types.



MORE EFFECTIVE,
MORE ADVANCED TECHNOLOGY!

Soprano ICE Version

Model:QM-808B





Technical specifications

Model	QM-808B	
Laser Type	Diode Laser	
Laser Stacks Power	1000W-1600W for option	
Wavelength (Spectrum)	808nm/755nm+808nm+1064nm	
Energy Density (Fluence)	100J/cm ² (Continuously adjustable)	
Spot Size	12*20mm (standard)	12*35mm (for option)
Pulse Repetition Rate	1-10Hz	
Pulse Duration	10-300ms	
Pulses	Single	
Cooling	<ul style="list-style-type: none"> • Continuous Sapphire contact cooling(-5°~1°) • Air cooling • Closed water circulation cooling 	
Stand-by Working	Continuously for 20 hours	
Display	12.4" True Color LCD Touch Screen	
Electrical Requirements	110/230VAC, 15/20A max., 50/60Hz	
Net Weight	65kgs	
Dimensions (WxDxH)	400*620*1100 mm	

Soprano Titanium

2 High Power handles:
1200W 1600W OEM available



1600W

Large Changeable
spot size:
15*40mm



1200W

Large Changeable
spot size:
12*30mm



**Different
spot sizes**



Model: QM-808B+

2

IPL/OPT SYSTEM



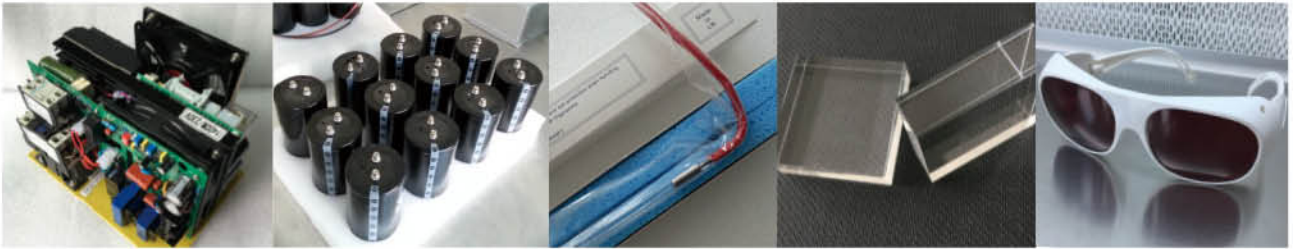
Applications

- Permanent hair removal
- Epidermal pigment removal
- Skin rejuvenation
- Vascular treatment
- Acne removal
- Spot and freckles removal
- Skin Toning
- Skin Firming and Tightening

Before & After



Top-level Spare parts



Accessories

- Filters:
Standard: 430/530/640-1200nm
Option: 480/560/590/750-1200nm
- Water Filter
- Protective eyewear
- Protective goggles
- Foot switch
- Insuse water kit



IMPORT FREELY!



Model:QM-100+

- The Operation Screen is adjustable, which can be laid down as a PC, Unique and Save packing size.
- Smart and compact metal design, it can separate into 2 parts, which solve the Customs questions in some countries., and reduce the complexity of after-sale service.

Technical specifications

Energy	IPL 10-60J/cm ²
	SHR 1-26J/cm ²
Frequency	1-10Hz
Pulse Duration	1-50ms
Spot Size	15*50mm
Cooling Level	1-5
Power Supply	230V/10A/50Hz
Pulse Interval	5-50ms
Machine Size	42*45*38mm
Machine weight	20Kgs



NOTES: IPL or SHR handle for option.

Model: QM-120



IPL/SHR



Cell light

- IPL,SHR, Cell light handles for option
- The Operation Screen is adjustable, which can be laid down as a PC, Unique and Save packing size.
- 10.4 inch luxury TFT touch screen, Apple Product level feeling!
- Top-level Spare parts adopted



Technical specifications

Energy	SHR:1-26J/cm ² ,IPL:10-60J/cm ²
Frequency	1-10Hz
IPL Peak Power	2400W
Spot Size	SHR:15*50mm IPL: 15*50mm (430/530/640-1200nm)
Pulse Repetition Rate	SHR: 1-10Hz IPL: 0.5-2Hz
Pulse Duration	1-15ms
Pulse	Single and Multi-pulses
Stand-by Working	20 hours



Diode Laser, IPL, Nd:YAG Laser and RF, either 2 in 1 system is available.

Muti-Laser Platform



Diode Laser+IPL SHR+Nd: YAG Laser+RF 4 in 1 System

Diode Laser

Power supply	2000W
Laser power	500w-800w
Energy/max	1-166J/cm ²
Wavelength	808nm or Mixed Wavelengths
Spot size	15*15mm
Pulse duration	10-400ms
Frequency	1-10Hz
Cooling level	1-5 level

IPL/SHR/E-light

Power supply	2000W
Laser power	/
Energy/max	1-50J/cm ²
Wavelengthl	480/530/590/640/690nm
Spot size	15*50mm(12*30mm optional)
Pulse duration	1-12ms
Frequency	1-10Hz
Cooling level	1-5 level

Nd: Yag Laser

Power supply	500W
Laser power	15w
Energy/max	1000mJ
Wavelength	532/1064/1320nm
Spot size	6mm
Pulse duration	10ns-20ns
Frequency	1-10Hz
Cooling level	1-5 level
Package weight	89Kgs

RF

Power supply	/
Laser power	/
Energy/max	1-100W
Wavelength	/
Spot size	20/28/35mm
Pulse duration	10-400ms
Frequency	1-10Hz
Cooling level	1-5 level
Package size	55*66*130mm



Diode Laser



IPL/SHR/E-Light



Nd:YAG Laser



RF

QM-230+ 3 IN 1 SYSTEM

- 16 languages for your option
- One-stop solution for skin and body care
- UK Lamp, USA COHERENT Laser Emitter

3 in 1

OR

4 in 1

FOR OPTION



DIODE LASER



IPL



ND YAG

16 languages for your option

One-stop solution for skin and body care

UK Lamp, USA COHERENT Laser Emitter





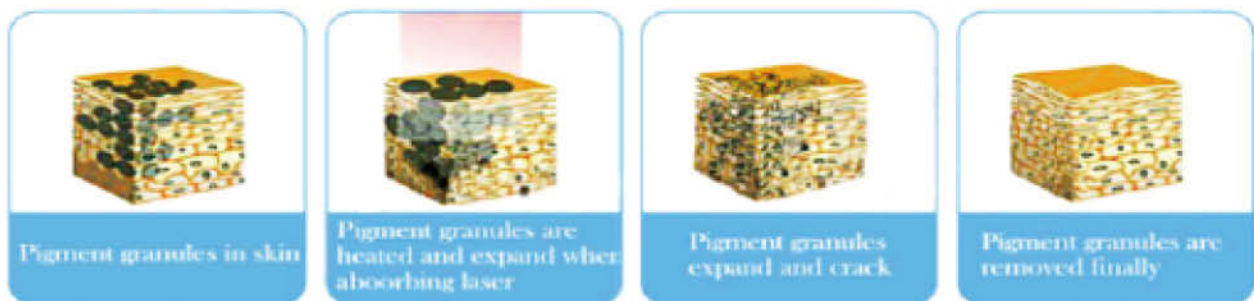
3

Q-switched Nd:YAG Laser System

Working Theory

The special wavelength of YAG laser can penetrate skin of human body according to the theory and practice of "selective laser decomposing", the instrument uses the laser-wave to break Chromatophore into pieces which can be naturally absorbed by the body. So that it achieves the purpose of de-freckling.

The Q-switched Nd:YAG laser radiates the light with a specific wavelength in high peak energy pulse; hence the light penetrates the tissue only for an ultra-short nanosecond. The light is absorbed by the pigment tissue and results in an instantaneous blast, that is Light blasting principle. The pigment particles are shattered into fragments, parts of them will be bounced out of the skin and other parts will be split into tiny particles that can be engulfed by phagocytes and then metabolized by the lymphatic system. The 1064nm wavelength will shatters and removes the black and blue pigments while the 532nm wavelength will shatters and removes red, pink, purple and brown pigments of the tattoo or other pigmentations without damaging the normal tissue.





Applications

- 1064nm: for treatment of tattoo removal, dermal pigmentation and treating certain pigmentary conditions such as Nevus of Ota and Hori's Nevus. (mainly for black and blue pigmentation)
- 532nm: for treatment of epidermal pigmentation such as freckles, solar lentigo, epidermal melasma, etc.(mainly for red and brown pigmentation)
- Black Carbon Head(NALR-1320nm): For deep cleaning, skin whitening, skin rejuvenation, shrink pores, acne treatment, wrinkle removal etc.



Model: QM-Q1



Peak Power	500W
Wavelength (Spectrum)	1064nm & 532nm & 1320nm
Energy Density (Fluence)	100-2000mJ
Display	10.4" True Color LCD Touch Screen
Spot Size	2-7mm
Pulse Repetition Rate	1-10Hz
Pulse Duration	<8ns
YAG Bar Size	ϕ7



Model: QM-Q1+



Technical specifications

Laser Type	Q-Switched Nd.YAG Laser
Peak Power	500W
Wavelength (Spectrum)	1064nm & 532nm (1320nm optional)
Energy Density (Fluence)	1-2000mJ
Spot Size	2-7mm
Pulse Repetition Rate	1-10Hz
Pulse Duration	<8ns
YAG Bar Size	φ7
Stand-by Working	Continuously for 15 hours
Net Weight	20kgs



532nm
Red coffee brown pigmentation removal



1064nm
Blue black cyan pigmentation and
all kinds of tattoo removal



1320nm
Black Dull Treatment
Skin whitening and rejuvenation



Model: QM-Q2

Wavelength 1064nm & 532nm (1320nm optional)

Energy Density (Fluence) 100-2000mJ

Spot Size 2-6mm

Pulse Repetition Rate 1-6Hz

Pulse Duration <8ns

YAG Bar Size ϕ 7

Peak Power 500W

Aiming Beam Guided by red light

Cooling Systems Air Cooling & Close Water Circulation

Stand-by Working Continuously for 15 hours

Electrical Requirements 110/230VAC, 15/20A max., 50/60Hz

Dimension 58*53*75cm

Net Weight 35kgs





4 Picolaser System

Model:Hally I



Applications

1. Epidermal pigment removal: Body tattoo, Eye line and brow tattoo.
2. Dermal pigment: Nevus of Ota, birth mark, Coffee spot, Age spot, Freckle.
3. Vessels disease: varicosity removal, capillary hemangioma.
4. Laser facial: oil control, skin rejuvenation, skin pore improvement.



Description	Picosure laser
Output power	2000W
Laser Wavelength	1064nm, 785nm, 532nm
Spot size	2-10mm adjustable
755nm Energy	1-2000mJ (Adjustable)
1064nm Energy	1-2000mJ (Adjustable)
532nm Energy	1-1000mJ (Adjustable)
Spot Diameter	2 -10mm (Adjustable)
Frequency	1-10Hz(Adjustable)
Pulse Width	500-750 ps
Indicator of aiming light	Red semiconductor aiming light
Cooling System	Air + Water + Semiconductor Module
Control screen	10.4 inch TFT color Touch screen
Voltage	110V- 240V, 50Hz/60Hz
Packing Size	114*80*130cm

THE TERMINATOR OF PIGMENTS!



Description	Picosure laser
Wavelength	1064nm / 532nm / 755nm
Energy Density (max)	1064nm-2000mj 755nm-2000mj 532 nm-1000mj
Power supply	2000W
Repetition Rate	1-10Hz adjustable
Spot size	2-10mm adjustable
Stand-by Working	Continuously for 24 hours
Cooling System	Air cooling+water cooling
Pulse Width	500-750ps
Display	15.6" Dual Color LCD Touch Screen
Electrical Requirements	100-220VAC, 20A max., 50/60Hz
Net Weight	115kgs

Model: Hally III



5 HIFU SYSTEM

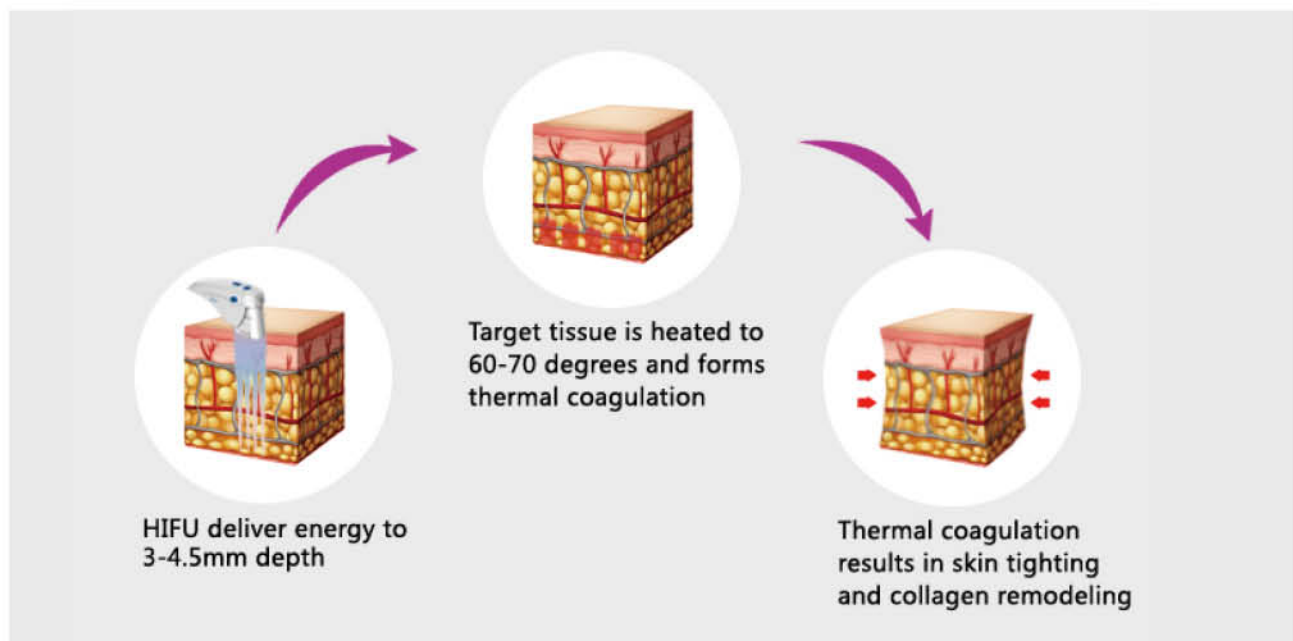
Target to **SMAS**, Renew your age by **HIFU**
High Intensity Focused Ultrasound

Applications

- Pigmentary skin disease
- Extrinsic pigmentation
- Epidermis pigmentation
- Vascular diseases, such as red blood streak, acne rosacea, portwine nevus, angioma and so on.
- Wrinkle Removal
- Pore Refining
- Skin Rejuvenation
- Acne Removal

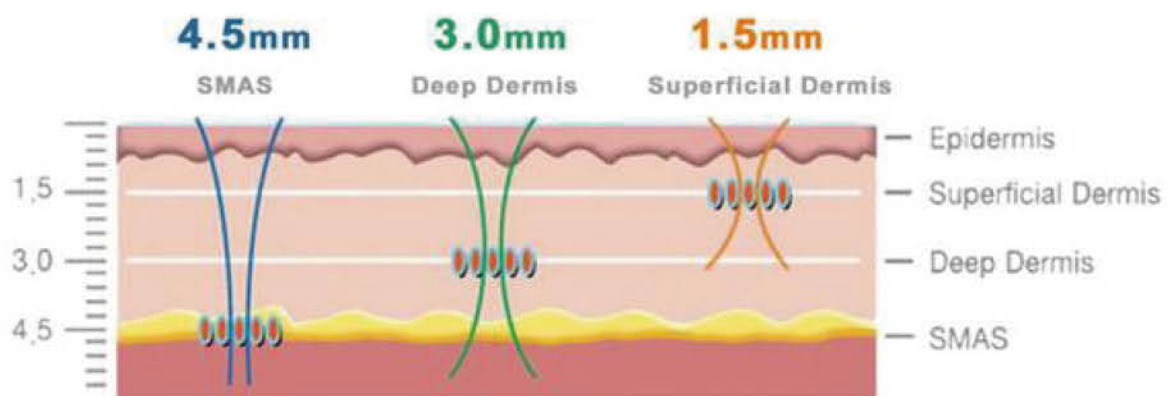
Working Principles

HIFU is a non surgical and a non laser procedure that directs high intensity focused ultrasound also known as hifu knife into the deep skin layer in order to gently heat the tissue to lift and tighten aged skin without any incisions or disrupting skin surface .Hifu technology is able to transfer the heat energy into 3-4.5mm under the surface of the skin .It will heat the smas up to 60-70 temperature the raises thermal coagulation point which accelerates skin rejuvenation process and maximizes tightening effect of the skin layer .





HIFU SYSTEM



Comprehensive treatment



Advantages

- 1, Using a non-invasive technique to replace the traditional lift operation.
- 2, To tighten the loose skin, improve sagging and other aging phenomenon.
- 3, With a special conveyor, penetrating conduction high energy focusing



probe



Footrest



power cord



instructions



packing box



TT MPTSTL



instrument



Handle



Handle



Handle



probe

12D MAX



Brighten skin tone



Delicate skin



Regenerated collagen



Smooth fine lines



Enhance elasticity



Fat pad reduction



Resist gravity



Fascia lifting

Technical specifications

Model	12D Max
Power Supply	AC 110V AC 220V
Power	650W
Frequency	2 MHZ 4 MHZ 5.5 MHZ
Machine weight	10 kg
Gross weight	20 kg
Packing Size	60*43*57cm



22D MAX

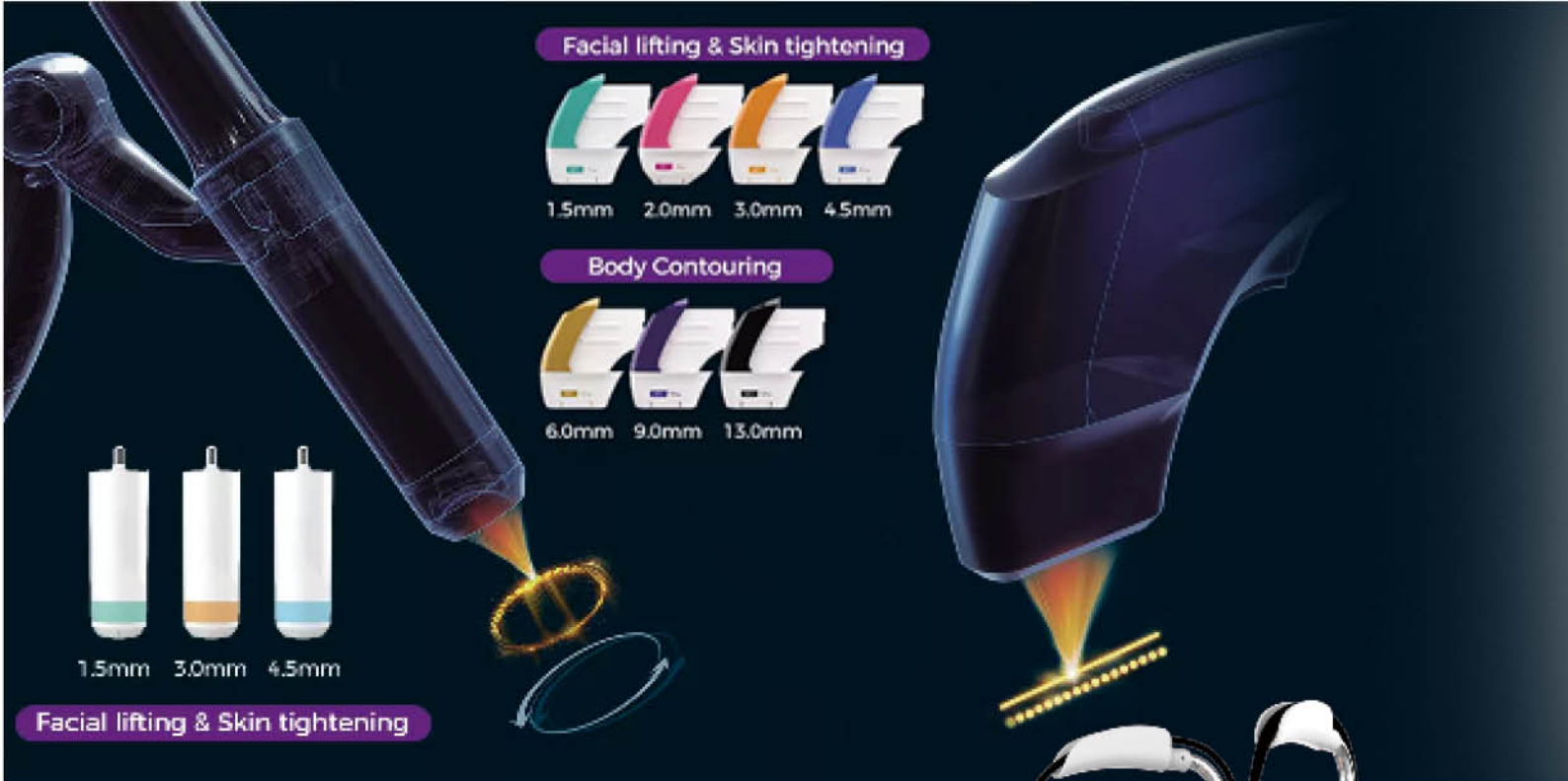
YOUR RESPECTABILITY MANAGER

Innovative technology - rejuvenate youth



- Non-invasive
- Easy to use
- No down time
- Comfortable

Model:	22D Max
Power Supply:	AC 220V
Frequency:	2MHz 4MHz
Power:	1280W
Device weight:	10kgs
Gross Weight :	22kgs
Package size:	32 X 53 X 37 cm

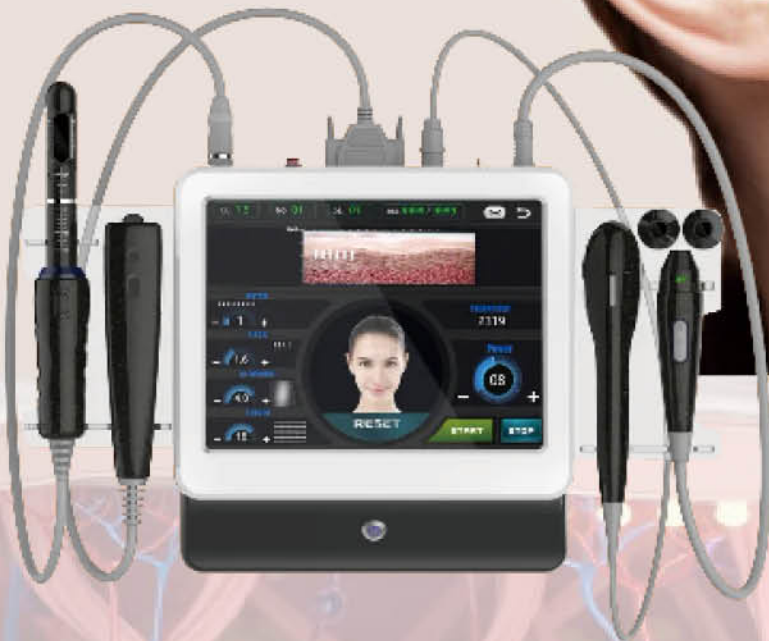


- » Non Surgical
- » Lifts & Tightens
- » Safe & Effective
- » No Downtime
- » Lasting Results



Model: ULTRALIFT

Salons' favor HIFU-Q8+



6 handles for option:



HIFU-Q3

Features

1. High-quality transducer, stable power, precise focused thermal coagulation for best results
2. 15-inch color touch screen: precise control of settings, clear display
3. 5 cartridges for forehead lift and body firming
4. Automatic cartridge recognition 10,000 shots
5. Immediate treatment results and 1-3 years duration
6. Factory direct sales



Technical specifications

Voltage Input	110V-220V 50Hz/60Hz
Output Power	0.1J-2.0J (0.1J per step)
Space Range	1.0~4.0mm(0.5mm/step)
Length	5.0~25mm(1.0mm/step)
HIFU Cartridge	3 heads for standard: 1.5mm, 3.0mm, 4.5mm; 2 heads for optional: 8mm,13mm.
Screen Size	15" TFT LCD touch screen
Shots	10000-10100 shots (Every head)
Gross Weight	20KG
Packing Size(CM)	48*57*55cm

Model: HIFU-Q6

PRIVATE HIFU VAGINAL TIGHTENING

Technical specifications

Model	HIFU-Q6
Operation Principle	Ultrasonic
Voltage Input	AC100V-240V 50/60Hz
Cartridges	3.0mm+4.5mm
Output Power	0.1J(weak) to 1.0J(strong) (0.1J/step)
Cartridge shots	10,000shots
Space Range	1.0 to 3.0mm (0.1mm/step)
Focal Length	5 to 25mm (1.0mm/step)
Rotating Angle	5°C- 25°C
Working type	Automatic rotation (angles can be adjusted)
Temperture	65°C -70°C
Fuse	FL5X20/3.15A with buffer (Double fuse)
Packing Size	42*55*80cm
N.W.	15kgs



Model: HIFU-Q7



Features

- 1) Latest 7D HIFU technology, 7 depths cartridges, more effective and efficiency working
- 2) MMFU(Macro & Micro Focused Ultrasound) : "Macro & Micro High Intensity Focused Ultrasound System" Non-Surgical Treatment Of Face Lifting, Body Firming And Body Contouring System!

What is 7D Focused Ultrasound ?

MMFU(Macro & Micro Focused Ultrasound) : "Macro & Micro High Intensity Focused Ultrasound System" Non-Surgical Treatment Of Face Lifting, Body Firming And Body Contouring System!

Focused Ultrasound System" Non-Surgical Treatment Of Face Lifting, Body Firming



BODY SLIMMING SYSTEM

Define your body figure
By iShape III

Applications:

1. Intensive physical biolysis to remove fat
2. Excess fat cell melted, Body circumference reduction
3. Body slimming, Body contouring, Body Shaping
4. Cellulite reduction, Massage
5. Skin tightening, Eyelid Area Treatment, Dark Circles
6. Smooth fatigue, Wrinkle removal, Skin Rejuvenation, Face Lifting
7. Remove obstruction from channels and collaterals
8. Promote and accelerate the body's metabolism

Technology 1: Cavitation

Technology 2: 940nm infrared light

Technology 3: Bipolar RF(radio frequency)

Technology 4: Vacuum massage

Technology 5: Mechanical roller massage



iShape III

Technical specifications

Technical Specification	Electrical requirement	90kPa -25kPa(68.4Hg -19Hg)		
	Relative value	10kPa -75kPa(7.6Hg -57Hg)		
	Working Mode	1-8s cyclical working	High-frequency vibration working	
Radio frequency	Power	150W Max		
	Frequency	Three different frequencies		
	Penetration depth	Deep/Middle/Light(Optional)		
	Output way	Rollers of Handpiece No.1	Transducer of Handpiece No.4	
		Electrode pieces of Handpiece No.2 & No.3		
Cavitation	Power	60W Max		
	Frequency	60kHz		
Infrared light	Power	40W rated of Handpiece No.1	16W rated of Handpiece No.2	
	Wavelength	850nm		
	Output	Focused by convex lens		
Roller	Power	4W Max		
	Speed	15RPM rated		
Display screen	Main machine	10.4 inch touch screen		
	Handpiece No.1 & No.4	2.4 inch color display screen		
Electrical requirement	AC220V±10%,50Hz/AC110V±10%,60Hz			



EMslim
neo



EMT1-S

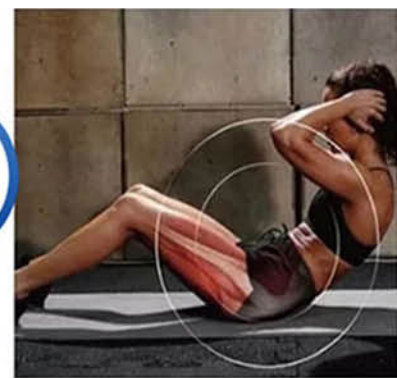
The
one
inBody
Shaping

LESS Fat
Muscle MORE

Technical Datas



PK



Model	EMT1-S
Pulse	300us
Output Power	0- 13 Tesla
Function 1	Muscle stimulator
Function 2	Burns fat
Function 3	Body slimming
Technology	High Intensity Pulsed Electromagnetic
Treatment area	Buttocks, Arms, Thighs, Shoulder, Leg, Back
Operation System	High Intensity Focused Electro-Magnetic

EMT1+

Applications

- Face lifting and skin tightening
- Body shaping/body circumference reduction
- Face and neck wrinkle eliminating
- Removes acne and black circle around eyes, eye bag
- Improving skin-metabolism
- unique for upper eyelid
- skin surface smooth/massage
- cellulite reduction



Technical Datas

Model	EMT1+
Output Power	0- 10 Tesla
Application	For Commercial
Cooling System	Air/Water
Screen	15.6 Inch Touch Screen
Service	OEM/ODM/24hours Online Service
Function	Burns fat,Body slimming



Model: EMS Slim



Applications

1. Safe, simple and fast The treatment is performed with patient lying down and is extremely comfortable for him or her. A session generally lasts between 20 and 30 minutes. As a result of the non-invasive and virtually painless treatment, the patient can resume his or her normal daily activities immediately after the treatment.
2. The treatment region Abdomen; Buttocks; Upper legs





Model: QM-5S

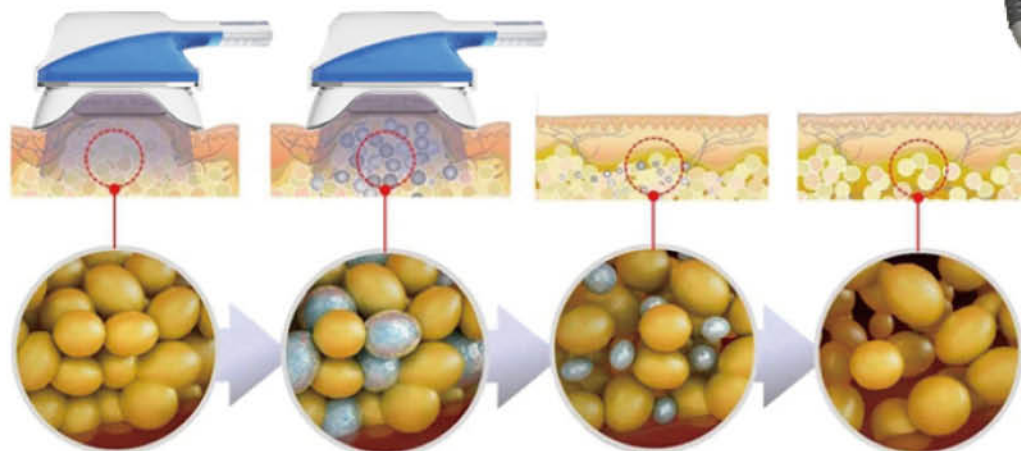
Technical specifications:

Rated Voltage	AC 110~220V	Pressure Output	0.08MPa
Rated Power	800W	Refrigeration Method	Water cycle
Frequency	50~60Hz	RF Face	3MHz
Screen Size	10.4	RF Frequency	5MHz
Handle Screen Size	4.5	Laser Power	100mw/pcs
Handle Material	Silicon	Gross Weight	56KG
Handle Temperature	-10°C/+45°C	Product Size /W*D*H	62*46* 170cm



CRYOLIPOLYSIS SYSTEM

MODEL: QM-3S



- Apply Coolshaping applicator at the target area, Start cryo-cooling to reach a target temperature.
- The fat cells in the target area begin responding to cryo-crystallization.
- Following the treatment, fat cells reach an biological death and removed by metabolism process.
- The fat cells are eliminated.

Advantages

1. One treatment can reduce 26% fat on treatment area
2. 10.2 inch color touch screen
3. Allocation of PDF red light and PDT Green light (Red light can promote blood circulation, green light can reduce swelling of the treating area).
4. Four different sizes cryo handles, size 100, size 150, size 200, size 300, Two cryo handles can work at the same time (Except handle size 300, size 300 is specially designed for the very fat person)
5. Three different vacuum working modes:
Mode P1. Intelligent massage and vacuum balancing mode
Mode P2. Intelligent vacuum balancing mode
Mode P3. Fixed vacuum mode
6. Patent anti-cold damage technology to protect the skin
7. Automatic failure detection technology
8. Intelligent automatic pipe cleaning system



CRYO 1



CRYO 2



Mini CRYO 3



LipoLaser



40K



BodyRF



FaceRF

Technical Specifications

Input Voltage	AC110V/220V 50-60Hz
Rated Power	500w
Screen	8.0-inch wide color touch screen
Cooling Device Output	-11-45
Temperatur	
Cavitation frequency	40KHz
Pressure output	0.08MPa
RF frequency	3-5MHz
Laser wavelength	650nm



4 in 1 inner Ball Roller

+ VACUUM

+ RF+LED

+ 180°MECHANICAL



Body Swirl Handle



Face Handle



Body Roller Handle



Facial Roller Handle





7

CO₂ FRACTIONAL LASER SYSTEM

Model: QM-10600



Variable Treatment Graphics
Adjustable shapes sizes and spacing



3 in 1 system:
+Fractional
+Surgical
+Gynecology



vaginal model



Ultrapulse model



Fractional model



Applications

Traditional Fractional Model and Surgical Mode

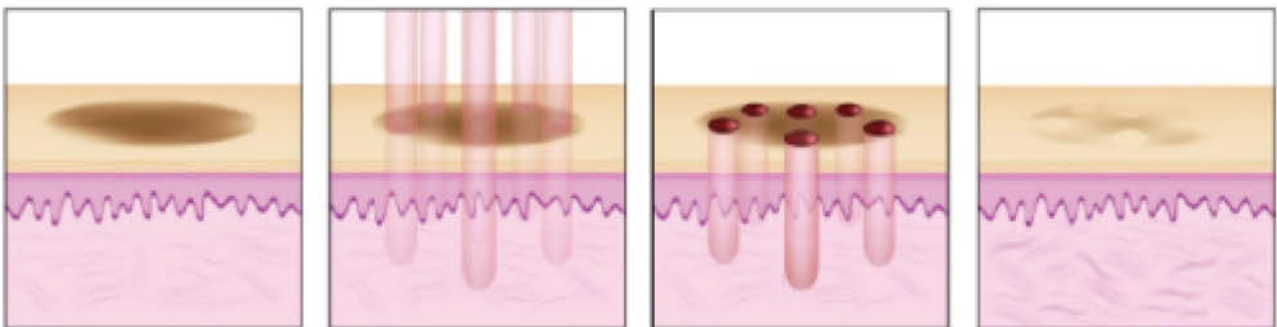
- Skin renewing and resurfacing
- Wrinkle removal, skin tightening
- Acne and scar removal, melasma removal
- Smooth scars like burn, surgery, traumatic, and stretch marks, etc
- Remove intractable chloasmas and pigmentation
- Sun damage recovery

Vaginal tightening and Vaginal Mode

Tighten vagina –Fast tightening, lasting constriction, tightness to improve 60%;Clean the vagina – Deep anti-aging, young level to improve 80%;Moist vagina – Improving secretion, moisture level to improve 80%;Pink vagina – Vulva rejuvenation, lighten pigment and pinks labia parts, delicate degree to improve 70%

Working Principle

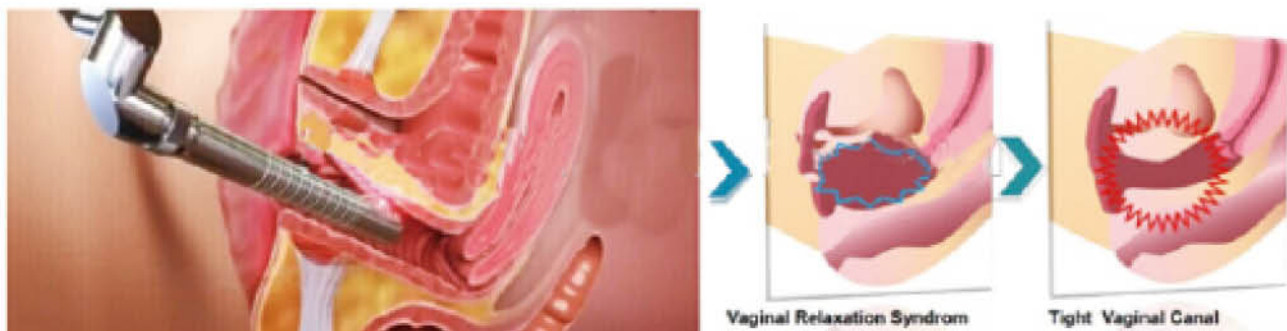
Unlike traditional laser, fractional laser will only cover part of the skin tissue, leaving the surrounding tissue intact, and then cause a series biochemical reactions inside the skin, thus to reach the results of skin lifting & resurfacing, pigments and scar removal, etc, finally let the skin return to young again. The unaffected areas act as a reservoir for more effective and rapid tissue healing and collagen production, thus lift the skin and removes speckles and pigments.





For Vaginal rejuvenation

Use an articulate arm probe with automatically 360° rotation technology, producing in 50-70 °C at a controlled depth inside the vaginal mucosa - stimulates collagen contraction, restructuring and regeneration; promotes collagen fiber proliferating, remodeling; improves vaginal mucosa microcirculation; increases cell secretion and dynamic reaction function; corrects PH value of vaginal inside; improves the inside environment; achieve female private parts to significant lasting firming, nourishing and restoring harmonious sexual life.



Technical Specifications

Laser type	Metal Tube (RF-excited)
Output power	40W
Wavelength	10.6μm, far-infrared laser
Display	10.4 inch color touch LCD screen
System & Probes	3 systems, 5 probes
Pulsed Radio Frequency	0.530W
Scan Graphics (7 graphics)	Square, rectangle, round, triangle, oval, 6-diamond shape, line
Scan Graphic Size	0.1x0.1mm – 20x20mm
Scan mode (3 modes)	Random, Sequence, the Maximum Distance A&B, Equidistance, Fast Shot
Working State	Hyper-pulsed mode
Pulse Duration	0.1-10 ms
Pulse energy	10mj to 130mj is optional for each dot
Spot Distance	0.1-2.6 mm
Interval	0-6s
Repeat	1-5000 ms
Overlap	1-20 times
Condenser Focus	F=50mm
Beam divergence angle	0.3mrad
Spot Size	0.01mm at the focus
Aiming Beam	Less than 2Mw, 635nm red semiconductor laser
Beam Transport Device	7-joint articulated optical arm
Laser Apparatus	Sealed off laser unit stimulated by direct current
Cooling System	Air
Power Supply	220V/110V
Dimension of machine	55x45x108cm
Package Standard	2 cases standard: Case 1: 68x56x125cm; Case 2: 80x40x30cm
Net Weight	46kgs
Gross Weight	72kgs



980nm Diode Laser system

Model: QM-980

Technical Specifications

Description	Diode laser 980nm
Input voltage	220V 50HZ/110V
power	15W / 30W / 60W
wavelength	980nm
frequency	1.5HZ
pulse width	1200ms
Output mode	fiber
TFT touch screen	8 Inch
Dimensions	45.5*45.5*32cm
gross weight	12.40kg





FACIAL CARE SYSTEM

What is the important of Facial Care?

Facial care is important because it is the key to reducing and avoiding acne. Caring for the skin allows individuals to feed it the nutrients that it needs. This can help them to control problems such as premature aging and dry skin. A person's complexion can drastically affect his or her appearance, and caring for one's face helps maintain an even skin tone.

One of the primary reasons why facial care is important is because it promotes good cleansing habits. Cleansing is essential to a healthy appearance, especially for people who have problems with acne or who want to avoid these problems. If an individual does not take the time to clean his or her face properly, oil and toxins can build up and block his or her pores, causing a breakout of acne. The residue and grime to which an individual is exposed throughout the day can lead to dull, unattractive skin.

Products that are used during facial care often have ingredients that the skin needs to maintain its glow and suppleness. These might include items such as vitamins and antioxidants, which can make the skin resilient and promote healing to damaged areas. Many of the products available are also designed to help slow the aging. A person's complexion can be an asset or a hindrance. For example, having a lot of spots from breakouts or other types of hyperpigmentation might result in a person being denied certain professional opportunities. Good facial care habits can help an individual avoid and prevent these problems. There are a wide range of products that are designed to help speed up the exfoliation process, meaning that dead, damaged layers are removed at a faster pace than they otherwise would be. Many products are also designed to help fade discoloration, which also promotes an even skin tone.



14 in 1 Hydra Facical System

Model: QM-690



Technical Specifications

Item	14 in 1 Hydra Facical Care Machine
Model	QM-690
Vacuum	90Kpa
Max output	250VA
Power	300W
Screen	15 inch Touch screen
Ultrasound	1MHz
RF	5MHz
High frequency	50Hz-60Hz
Voltage	100-240VAC, 50Hz/60Hz
Handle	4 Hydrodermabrasion with 8 tips / Hydrodermabrasion with 9 diamond tips; Spray mist gun 1 piece; RF 1 piece; Three polar RF 1 piece; High frequency handle 1 piece, Ultrasound handle 2 pieces; Bio photoelectric 2 pieces; Skin scrubber 1 piece; Photon Brush 2 pieces



Technical Specifications

Model	QM-610+
Voltage	100V- 240V 50Hz-60Hz
Power	<350W
RF Frequency	Biopolar, multipolar
Cold And Hot	0-45°C
Ultrasound	1.1MHz
Probe	4 soft heads and 8 hard heads



Model: QM-610+

Multifunctional Hyperbaric Oxygen Machine

01



HIGH FREQUENCY SHOVEL KNIFE

- ✓ HIGH FREQUENCY REMOVAL
- ✓ DEAD SKIN BLACKHEADS

02

GOLDEN RADIO HEAD

- ✓ LIGHT WRINKLES AND FIRMNESS
- ✓ COLLAGEN REGENERATION



03



ION AIRBRUSH PEN

- ✓ NANO ATOMIZATION
- ✓ PENETRATE THE SKIN

04

ICY HEAD

- ✓ MOISTURIZE
- ✓ REPAIR



05



ION BUBBLE PEN

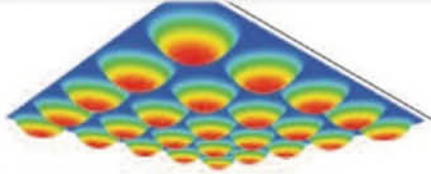
- ✓ DEEP CLEANING
- ✓ BLACKHEADS

06

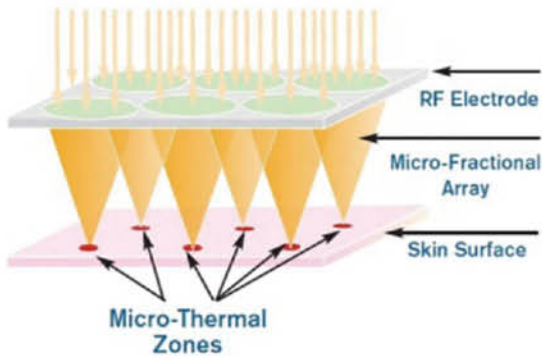
ULTRASONIC HEAD

- ✓ HIGH FREQUENCY IMPACT
- ✓ FAST ABSORPTION





Micro-Fractional RF Heating Array



10 Pins



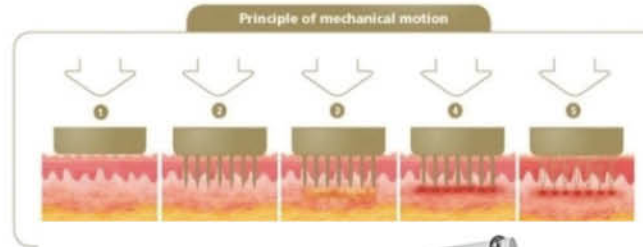
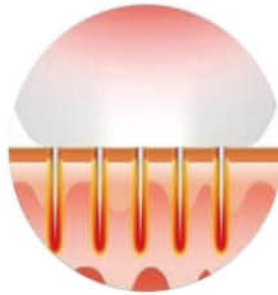
25 Pins



60 Pins



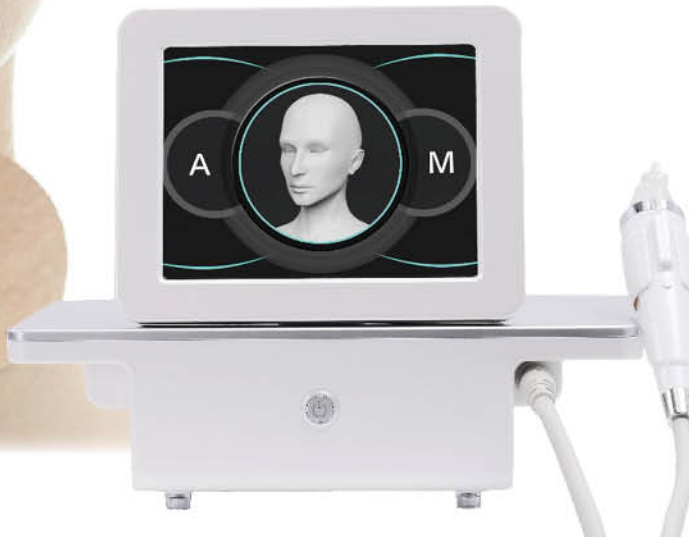
Nano Pins



MICRONEEDLE FRACTIONAL RF SYSTEM

Applications:

- 1. stretch marks removal**
- 2. skin rejuvenation**
- 3. skin lifting**
- 4. scar removal**
- 5. acne removal**



Model: QM-310 / QM-320

Technical Specifications

Product Name	Glod RF Crystallite Depth Morpheus
Touch Screen	10'6 Inches
Therapy Probe	12P, 24P, 40P, Nanocrystalline Head
Depth	0.5-7mm
Energy	10-300W
Output Frequency	4MHz
Package size	49x46x102cm
Weight	29KG



Model: Morpheus8

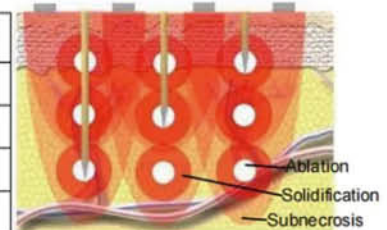


MORPHEUS8
Fractional Microneedle RF
the maximum rf energy
can reach 8mm



• Customizable multipulse settings:

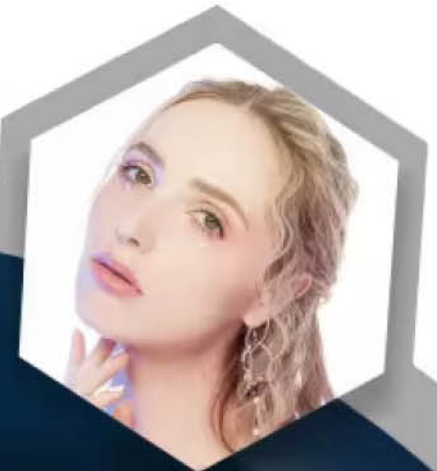
Depth Setting	Multi-level Fixed-point Overlay Depth
7mm	7mm, 5mm, 3mm
6mm	6mm, 4mm, 2mm
5mm	5mm, 3mm
4mm	4mm, 2mm



Functions

1. Acne treatment
2. Skin rejuvenation
3. Wrinkle removal
4. Scar removal
5. Improve stretch marks

Model: Crystallite Depth 8



CRYSTALLITE DEPTH 8

Fractional Microneedle RF



3D Facial Skin Analysis

1. 10 Mega pixels with 4-time magnifier
2. Auto-focus
3. Auto-analysis
4. UV Voice system
5. 3: 4 Preview system
6. Front slant window
7. Support multi-languages



Model: QM-510

Technical Specifications

Type	Facial Skin Analyzer
Feature	Skin wrinkle analysis, pigmentation analysis, acne analysis, detect skin moisture, skin analyzer
Hard Disk Space	120GB
Resolution	28 million HD Pixels
Light	White light (RGB) Polarized light (PL) Ultraviolet light (UV)
Illumination (RGB)	8,800 Lux
Color Temperature	7200K
Spectrum	8 spectrum

Model: QM-510+

- ✓ RGB & UV & PL
- ✓ Intelligent acquisition
- ✓ 12 kinds of skin analysis
- ✓ 20 megapixel HD camera
- ✓ No need for networking
- ✓ Cosmetic recommendation
- ✓ Face recognition technology
- ✓ Shooting, analyzing, displaying 3 in 1

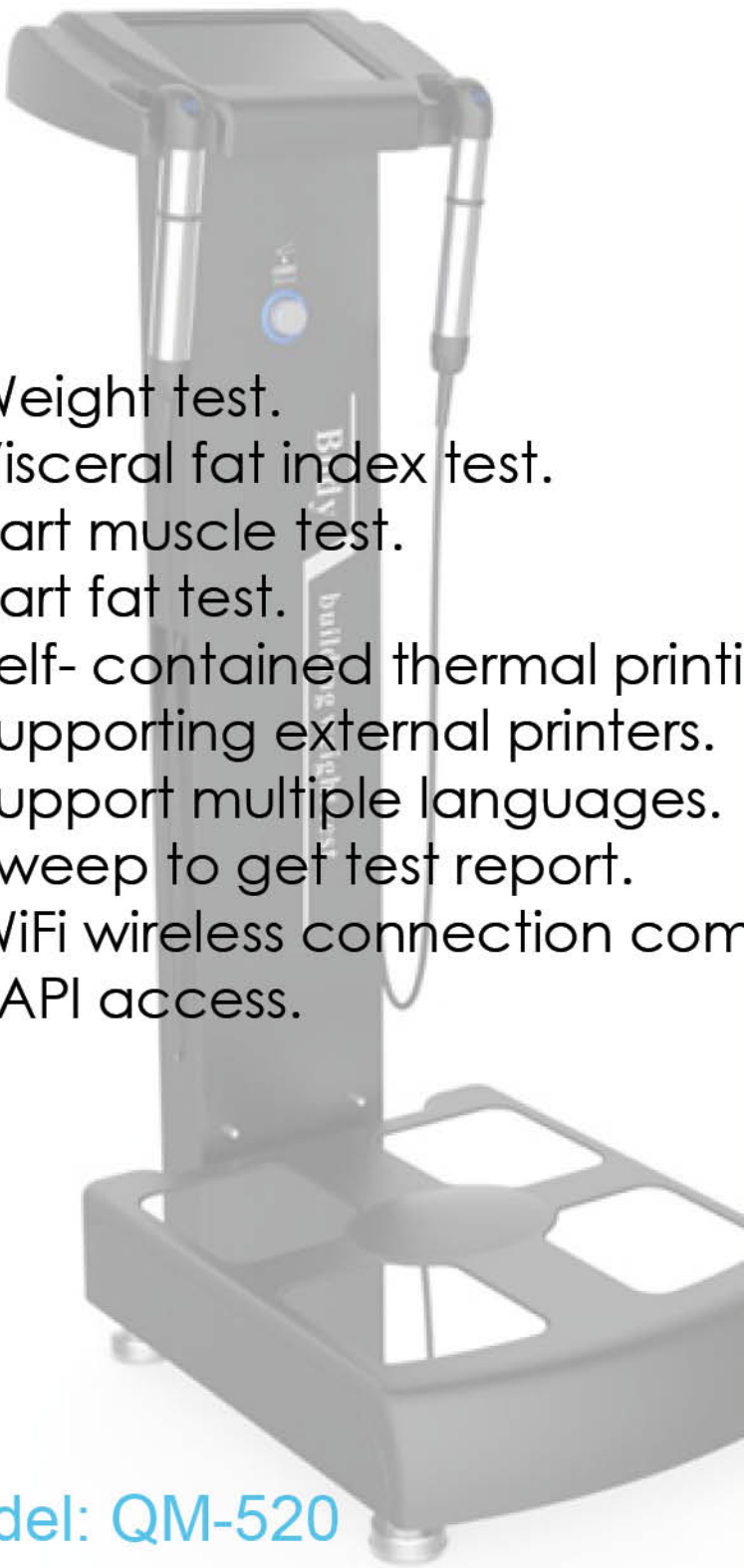


Technical Specifications

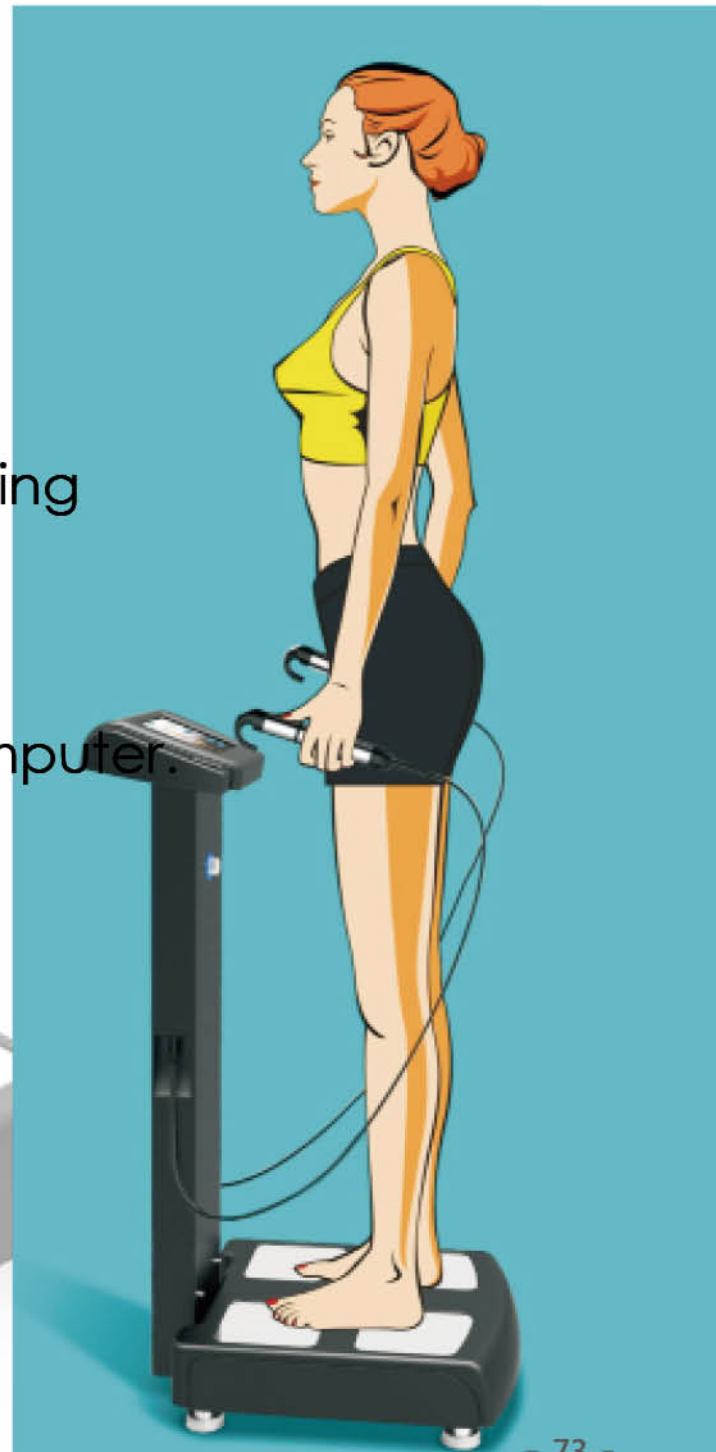
Product Name	3D Magic Mirror Skin Analyser
Power	45W
Voltage	110V~220V,VAC±10%
Current	0.2A, 50HZ
Camera Pixel	20 Megapixel
Screen Size	10.4 inch
Running Memory	2GB
Storage Space	64GB
External Extension	Support External Printer, SD Card, Makeup Mirror
Weight	8KG
Package Size	48*48*57cm



Body Composition Analysis system

- 
1. Weight test.
 2. Visceral fat index test.
 3. Part muscle test.
 4. Part fat test.
 5. Self- contained thermal printing
 6. Supporting external printers.
 7. Support multiple languages.
 8. Sweep to get test report.
 9. WiFi wireless connection computer.
 10. API access.

Model: QM-520



Accessories:



We show you only part of the spare parts for medical aesthetic systems...



For more details, please visit our site: www.qm-laser.com



Beijing QM Medical Co., Ltd.

Add. 1: Room 409, Floor 4, No.113, Kaifang Road, HuaiRou District, Beijing, China
Add. 2: Building 22, Headquarters Enterprise Base Gaoxin District, Zhengzhou, China.

Tel: **+86 10 56421688**

Fax: +86 10 56421688

Whatsapp: **+86 18910016670**

E-mail: info@qm-laser.com

Web: www.qm-laser.com

www.qmlaser.com

www.qmmmedical.com