

THANKS FOR VISITING

应用场景

APPLICATION SCENARIOS



新能源汽车



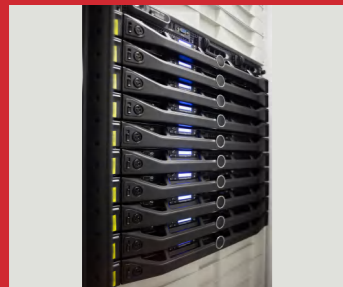
光伏



储能



风电



UPS



数据中心



轨道交通



电源



+86-021-50901305 www.freesor.com marketing@freesor.com

上海市浦东新区海洋一路 333 号 临港科创城 B 座 14 楼
14th Floor, Block B, Lingang Science and Innovation City, No. 333 Ocean Road 1, Pudong New Area, Shanghai, China

上海飞轩传感器技术有限公司
Shanghai Freesor Sensor Technology Co., Ltd.



公司简介

COMPANY PROFILE

上海飞轩传感器技术有限公司于 2005 年由多位经验丰富的海外归国人士共同创立，是一家专注于设计、研发、生产和销售的高新技术企业。飞轩是柯力传感（股票代码：603662）旗下控股子公司，其 FREESOR 自主品牌覆盖新能源汽车专用传感器、开环和闭环霍尔电流及电压传感器、漏电流传感器等，广泛应用于新能源汽车、光伏、储能、轨道交通等行业。我们的产品在稳定性、精度和抗干扰性方面达到行业领先水平。

公司拥有高水平的研发团队和先进的 IC 设计及测试设备，并与国内外知名芯片设计公司保持紧密合作。依托全球半导体厂商的前沿技术，飞轩为客户提供高性价比的产品和技术支持，助力电子产品的整体应用方案。经过多年市场考验，飞轩赢得了行业客户的认可，并远销东南亚、欧美等多个国家和地区。

Shanghai Freesor Sensor Technology Co., Ltd. was co-founded in 2005 by a number of experienced overseas returnees, and is a high-tech enterprise specializing in design, research and development, production and sales. FREESOR is a holding subsidiary of Keli Sensing (stock code:603662), and its FREESOR independent brand covers special sensors for new energy vehicles, open-loop and closed-loop Hall current and voltage sensors, leakage current sensors, etc., which are widely used in new energy vehicles, photovoltaic, energy storage, rail transit and other industries. Our products have reached the leading level in the industry in terms of stability, precision and anti-interference.

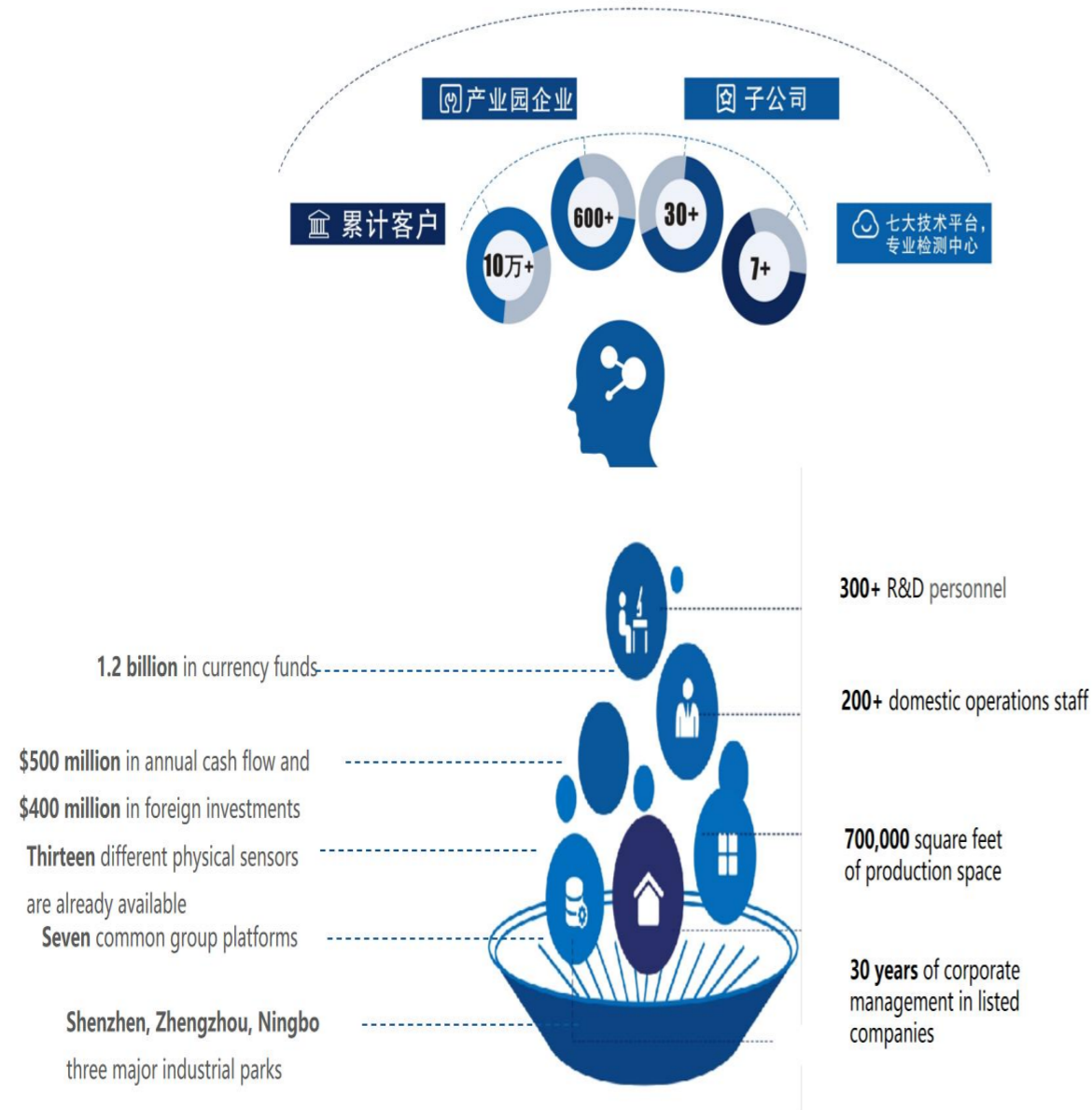
We have a high-level R&D team and advanced IC design and test equipment, and maintain close cooperation with well-known chip design companies at home and abroad. Relying on the cutting-edge technology of global semiconductor manufacturers, Freesor provides customers with cost-effective products and technical support to help the overall application solutions of electronic products. After years of market test, Freesor has won the recognition of industry customers and has been exported to Southeast Asia, Europe and the United States and other countries and regions.

资质证书

CERTIFICATES



Introduction to Keli Group



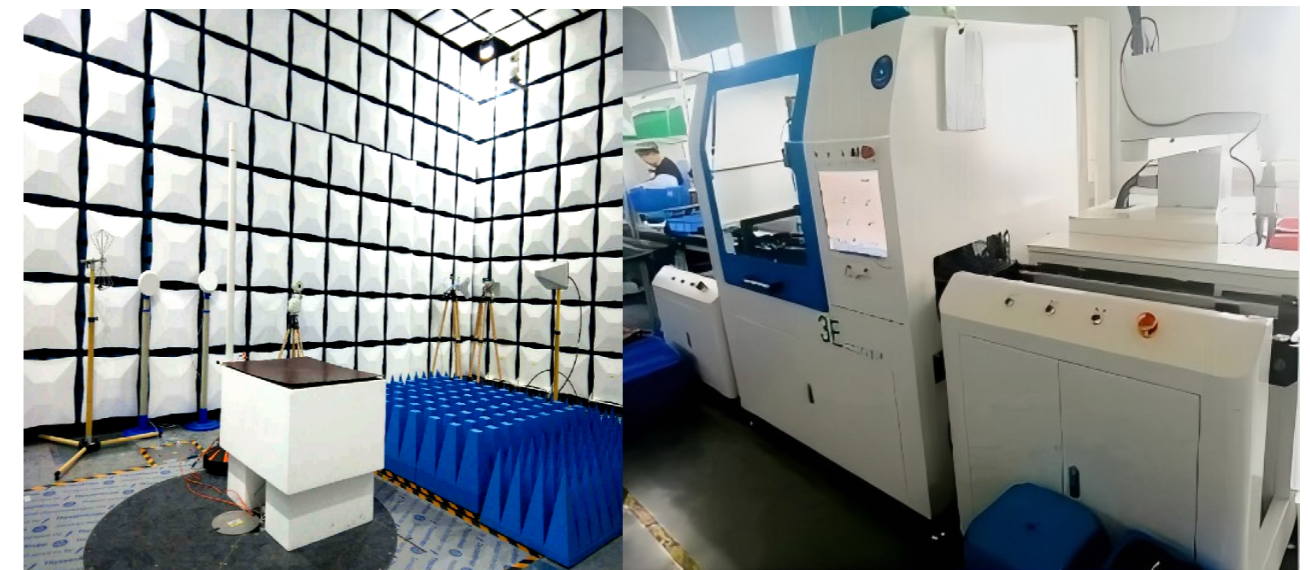
Capacity Introduction

Ningbo workshop area 5000m²
 Shenzhen factory area 3500m²

Production capacity planning:
 In 2023, four automated production lines will be built, with a capacity of 6 million PCS.
 By 2024, six new automated production lines will be added, with a capacity of 10 million PCS.
 By 2025, an intelligent factory will be realized with a production capacity of 20 million PCS.



Laboratory Introduction



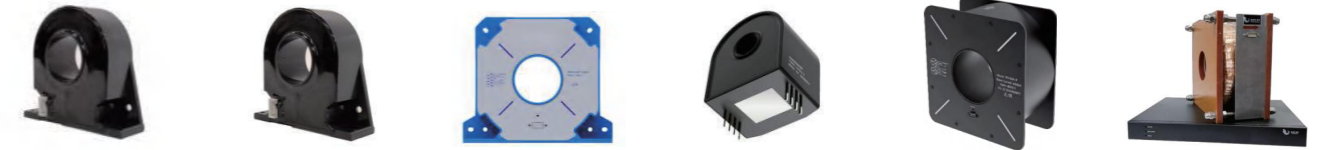
电流传感器快速选型表

QUICK SELECTION TABLE FOR CURRENT SENSORS

产品型号 Product	测量范围 I _{pm} (A)	供电电压 VCC(V)	线性度 (%FS) Linearity	精度 (%FS) Precision	额定输出 Rated Output	响应时间 (μs) Response Time	窗口尺寸 (mm) Window Size
高精度电流传感器 High-precision Current Sensor							
FSM-LT	50 ~ 200	±14.25 ~ ±15.75	10PPM	10PPM	±50mA, ±100mA, ±150mA	< 1	Φ20
FSM-LTB	200 ~ 500	±14.25 ~ ±15.75	125PPM	500PPM	±50mA, ±100mA, ±150mA	< 1	Φ35
FSP2005/70	1000 ~ 3000	±23 ~ ±25	50PPM	500PPM	±400mA	< 1	Φ70
FSP-OB	0 ~ 100	+5	20PPM	100PPM	±100mA	< 1	板载式
FSP4000/105	4000	±23 ~ ±25	20PPM	100PPM	±1A	< 1	Φ105
FSP10000	10000	±198 ~ ±242	50PPM	500PPM	±1A	< 1	Φ140
芯片式电流传感器 Chip Current Sensor							
FS-CAS	50 ~ 250	+5	0.5	1	±2V	< 3	板载式
FSD7610-C	50 ~ 200	+3.3, +5	0.5	3	±1.32V, ±2V	< 1.2	PCB 贴片
FSD7608-C	10 ~ 65	+5	0.5	3	±2V	< 0.5	PCB 贴片
FSD7616-C	20 ~ 65	+3.3, +5	0.5	3	±1.32V, ±2V	< 0.8	PCB 贴片
直流漏电流传感器 DC Leakage Current Sensor							
SLD1S1K	80mA	±12 ~ ±15	1	1	RS485	≤ 500ms	Φ20
KLD1S	80mA	+12	1	1	RS485	≤ 500ms	Φ23
KLD1FS-4	80mA	+12	1	1	RS485	—	Φ20*4
KLD80	80mA	+12, +24	1	1	RS485	10ms	Φ80
KLD33KS	80mA	+12	1	3	RS485	≤ 500ms	Φ60
KLD55KS	80mA	+12	1	3	RS485	≤ 500ms	Φ55
SLD23K	10 ~ 100mA	±12 ~ ±15	1	1	±5V	≤ 750ms	Φ40
D-FS-LT	10 ~ 200mA	±12 ~ ±15	1	1	±5V	≤ 750ms	Φ20
KLD1B	10mA ~ 100mA	±12	1	1	±5V	≤ 750ms	Φ20
FS-R94	10 ~ 300mA	+12, +24	1	1	±5V, 4 ~ 20mA	≤ 200ms	Φ94
新能源专用电流传感器 New Energy Current Sensors							
KPLS	25 ~ 125	+5	1	1	±0.8V, ±2V	< 3	板载式
KG24	520	+12, +24	0.1	0.3	CAN	≤ 10ms	Φ24.2
FSD7307-C	20 ~ 50	+5	0.3	1	±2V	< 1	板载式
FSD7304	6 ~ 180	+5	1	1.4	±0.625V	< 1	板载式
FSD7559-B	100 ~ 500	+5	0.15	1.4	±0.625V	< 1	板载式
KG10	0.5, 1.7	+5	1	1	±1.2V	≤ 700	Φ10
FSK-SY	3 ~ 150	±15V	1	1	±4V	< 3	板载式
FSK-C10	50 ~ 550	+5	1	1	±2V	< 5	Φ10
FSK-C	50 ~ 1000	+5	1	1	±2V	< 5	Φ14.5
FSK-D	50 ~ 1000	+5	1	1	±2V	< 5	Φ16.8
FSK-C22	30 ~ 1000	+5	1	1	±2V	< 5	Φ22
FS-BT	30 ~ 600	+5	1	1	±2V	< 5	21×10
FSK-ET	30 ~ 880	+5	1	1	±2V	< 5	Φ20.5
FS-E2T	30 ~ 1000	+5	1	1	±2V	< 5	Φ28
FS-DKT5	20 ~ 90/200 ~ 750	+5	1	1	±2V	< 5	Φ22.5
FS-DKT5-28	20 ~ 90/200 ~ 1200	+5	1	1	±2V	< 5	Φ28
FS-BKT5	20 ~ 1400	+5	1	1	±2V	< 5	21×6
FS-CKT5	10 ~ 1500	+5	1	1	±2V	< 1.5	Φ12.5
KP31M	50 ~ 200	+5, +12	1	1	±0.625V, ±2V	≤ 6	21×10
FS-H3DR	50 ~ 1000	+5	1	1	±2V	< 4	Φ20×4
FSD-ADR3	50 ~ 1500	+5	1	1	±2V	< 5	Φ14.5
开环 (直测式) 霍尔电流传感器 Open-Loop (Direct-test) Hall Current Sensors							
FS-B	100 ~ 900	±12, ±15	1	1	±4V	< 3	21×10
FS-E	600 ~ 1000	±12, ±15	1	1	±4V	< 3	Φ20
FS-F	200 ~ 2500	±12, ±15	1	1	±4V	≤ 7	41×12
FS-K	300 ~ 2500	±12, ±15	1	1	±4V	< 7	64×16
FS-EK1	50 ~ 1000	±12, ±15	1	1	±4V	< 7	Φ21
FS-EK2	300 ~ 3000	±12, ±15	1	1	±4V	< 7	Φ40.5
FS-KF2	500 ~ 3000	±12, ±15	1	1	±4V	< 7	85×27
FS-ATS	200 ~ 2500	±12, ±15	1	1	±4V	< 10	40.5×30.5
FS-AX	500 ~ 5000	±12, ±15	1	1	±4V	≤ 5.5	64×21
FS-KA	600 ~ 7500	±12, ±15	1	1	±4V	< 7	104×36
FS15000KUE/4V	10000 ~ 160000	±15	1	1	±4V	< 10	216×210
闭环 (磁平衡式) 霍尔电流传感器 Closed-Loop (Magnetically Balanced) Hall Current Sensor							
FSM-LX	5 ~ 150	±15	0.1	0.5	±4V	< 1	板载式
FSM-NPT	6 ~ 150	+5	0.1	0.5	±0.625V, ±2V	< 1	板载式
FSM-LA	50 ~ 200	±12, ±15	0.1	0.7	±50mA, ±100mA	< 1	12.5×7
FSM-LT	50 ~ 500	±12 ~ ±18	0.1	0.1	±50mA, ±100mA, ±150mA	< 1	Φ20
FSM-AP	50 ~ 600	±12 ~ ±18	0.2	0.5	±50mA, ±100mA	< 1	16.5×10.5
FSM-LTB	100 ~ 800	±15, ±24	0.1	0.5	±100mA, ±150mA	< 1	Φ35
FSM1005LFS	500 ~ 1500	±15, ±24	0.1	0.2	±200mA	< 1	Φ38.5
FSM2005LF	2500	±15, ±24	0.1	0.2	±400mA	< 1	Φ60.5
FSM2005S	3000	±15, ±24	0.1	0.5	±400mA	< 1	Φ60.5
FSM3005	1000 ~ 4500	±15, ±24	0.1	0.3	±200mA, ±400mA, ±600mA	< 1	Φ120
FSM4005	1000 ~ 6000	±15, ±24	0.1	0.4	±200mA, ±400mA, ±600mA	< 1	Φ160.5
闭环 (磁平衡式) 霍尔电压传感器 Closed-Loop (Magnetically Balanced) Hall Voltage Sensor							
FV025A	25mA	±12, ±15	0.1	0.7	±25mA	≤ 40	板载式
FV-L100	50 ~ 3000V	±12, ±24	0.1	0.7	±50mA	≤ 40	—
FV-LV	300V ~ 6000V	±15, ±24	0.1	0.5	±50mA	< 200	—
掘进机 / 采煤机 TBMs/Shearers							
FS-RST3	10 ~ 240	+24	1	1	4 ~ 20mA	150ms	Φ20
FS-RST1	100 ~ 1200	+20 ~ +32	1	1	4 ~ 20mA	150ms	Φ32
FS-RST2	100 ~ 1200	+20 ~ +32	1	1	5V, 10V	150ms	Φ32
FS-W35 CAN 3孔	10 ~ 2500	+9 ~ +30	0.1	0.5	CAN	≤ 50ms	Φ35*3
FS-W50 CAN 3孔	20 ~ 3500	+9 ~ +30	0.1	0.5	CAN	≤ 150ms	Φ50*3

01 高精度产品

HIGH PRECISION PRODUCTS



FSM-LT FSM-LTB FSP2005/70 FSP-OB FSP4000/105 FSP10000

电气参数 ELECTRICAL PARAMETERS

产品型号 Product	输出 Output		供电电压 VCC(V)	额定量程 I _{pn} (A)	测量范围 I _{pm} (A)	精度 (PPM) Precision	带宽宽度 (KHZ) Band Width	响应时间 (μs) Response Time	工作温度 T _A (°C)	窗口尺寸 (mm) Window Size
	电流 Current	电压 Voltage								
FSM-LT	●	●	±14.25 ~ ±15.75	50 ~ 200A	50 ~ 200A	10	200	< 1	-25 ~ 60	Φ20
FSM-LTB	●	●	±14.25 ~ ±15.75	200 ~ 500A	200 ~ 500A	500	200	< 1	-25 ~ 60	Φ35
FSP2005/70	●	●	±23 ~ ±25	1000 ~ 3000A	1000 ~ 3000A	500	60	< 1	-25 ~ 60	Φ70
FSP-OB	●	●	+5	100A	100A	100	100	< 1	-25 ~ 60	板载式
FSP4000/105	●	●	±23 ~ ±25	4000A	4000A	100	60	< 1	-25 ~ 60	Φ105
FSP10000	●	●	±198 ~ ±242	10000A	10000A	500	100	< 1	-25 ~ 60	Φ140

02 芯片式

CHIP BASED



FS-CAS FSD7610-C FSD7608-C FSD7616-C

电气参数 ELECTRICAL PARAMETERS

产品型号 Product	输出 Output		供电电压 VCC(V)	额定量程 I _{pn} (A)	测量范围 I _{pm} (A)	精度 (%FS) Precision	带宽宽度 (KHZ) Band Width	响应时间 (μs) Response Time	工作温度 T _A (°C)	窗口尺寸 (mm) Window Size
	电流 Current	电压 Voltage								
FS-CAS		●	+5	50 ~ 250	50 ~ 250	1	170	3	-40 ~ 150	板载式
FSD7610-C	●		+3.3, +5	50 ~ 250	50 ~ 250	3	350	1.2	-40 ~ 125	PCB 贴片
FSD7608-C	●		+5	10 ~ 65	10 ~ 65	3	500	0.5	-40 ~ 125	PCB 贴片
FSD7616-C	●		+3.3, +5	20 ~ 65	20 ~ 65	3	600	0.8	-40 ~ 125	PCB 贴片

03 新能源电动汽车

NEW ENERGY ELECTRIC VEHICLES



电气参数 ELECTRICAL PARAMETERS

产品型号 Product	输出 Output		供电电压 VCC(V)	额定量程 I _{pn} (A)	测量范围 I _{pm} (A)	精度 (%FS) Precision	频带宽度 (KHZ) Band Width	响应时间 (μs) Response Time	工作温度 T _A (°C)	窗口尺寸 (mm) Window Size
	数字 Digital	电压 Voltage								
KG24	●		+12, +24	500	520	0.3	DC	10ms	-40 ~ 85	Φ24.2
FS-DKT5		●	+5	20 ~ 75 200 ~ 600	20 ~ 90 200 ~ 750	1	DC ~ 120	5	-40 ~ 125	Φ22.5
FS-DKT5-28		●	+5	20 ~ 75 200 ~ 1200	120 ~ 90 200 ~ 1200	1	DC ~ 120	5	-40 ~ 125	Φ28
FS-BKT5		●	+5	20 ~ 1200	20 ~ 1400	1	DC ~ 50	5	-40 ~ 125	21×6
FS-CKT5		●	+5	10 ~ 1500	10 ~ 1500	1	DC ~ 50	1.5	-40 ~ 125	Φ12.5
FSK-C22		●	+5	30 ~ 1000	30 ~ 1000	1	DC ~ 50	5	-40 ~ 125	Φ22
FSK-C18		●	+5	30 ~ 600	30 ~ 720	1	DC ~ 50	5	-40 ~ 125	Φ19
FS-E2T		●	+5	30 ~ 1000	30 ~ 1000	1	DC ~ 20	5	-40 ~ 125	Φ28
FSK-ET		●	+5	30 ~ 700	30 ~ 880	1	DC ~ 100	5	-40 ~ 125	Φ20.5
FSD-ADR3		●	+5	50 ~ 1500	50 ~ 1500	1	DC ~ 50	5	-40 ~ 125	14.5
FS-H3DR		●	+5	50 ~ 1000	50 ~ 1000	1	120	4	-40 ~ 125	20×4
FSK-D		●	+5	50 ~ 1000	50 ~ 1000	1	DC ~ 50	5	-40 ~ 125	Φ16.8
FSK-C		●	+5	50 ~ 1000	50 ~ 1000	1	DC ~ 120	5	-40 ~ 125	Φ14.5
FSK-C10		●	+5	50 ~ 500	50 ~ 550	1	DC ~ 25	5	-40 ~ 85	板载式
FS-BT		●	+5	30 ~ 500	30 ~ 600	1	DC ~ 20	3	-40 ~ 85	21×10

04 光伏 / 储能 / 风电

PHOTOVOLTAIC/ENERGY STORAGE/WIND POWER



电气参数 ELECTRICAL PARAMETERS

产品型号 Product	输出 Output		供电电压 VCC(V)	额定量程 I _{pn} (A)	测量范围 I _{pm} (A)	精度 (%FS) Precision	频带宽度 (KHZ) Band Width	响应时间 (μs) Response Time	工作温度 T _A (°C)	窗口尺寸 (mm) Window Size
	电流 Current	电压 Voltage								
KPLS		●	+5	10 ~ 50	25 ~ 125	1	150	3	-40 ~ 105	板载式
KG24	数字通讯	●	+12, +24	500	520	0.3	DC	10ms	-40 ~ 85	Φ24.2
FS-B		●	±12, ±15	50 ~ 600	100 ~ 900	1	DC ~ 20	3	-40 ~ 125	21×10
FS-F		●	±12, ±15	100 ~ 2000	200 ~ 2500	1	DC ~ 20	≤ 7	-25 ~ 125	41×12
FS-ATS		●	±12, ±15	100 ~ 2000	200 ~ 2500	1	DC ~ 25	< 10	-40 ~ 105	40.5×30.5
FS-AX		●	±15	500 ~ 2500	500 ~ 5000	1	DC ~ 20	≤ 5.5	-40 ~ 85	64×21
KG10		●	+5	0.3,1	0.5,1.7	1	330	≤ 700	-40 ~ 105	Φ10
KLD80	数字通讯	●	+12, +24	50mA	80mA	1	DC	10ms	-45 ~ 85	Φ80
FS-EK2		●	±12, ±15	300 ~ 2000	300 ~ 3000	1	DC ~ 20	≤ 7	-25 ~ 85	Φ40
KP31M		●	+5, +12	50 ~ 200	50 ~ 200	1	150	≤ 6	-40 ~ 85	21×10
FSM-LTB	●	●	±15, ±24	100 ~ 500	100 ~ 800	0.5	DC ~ 100	< 1	-40 ~ 85	Φ35
FSM1005LFS	●	●	±15, ±24	500 ~ 1000	500 ~ 1500	0.2	DC ~ 150	< 1	-40 ~ 85	Φ38.5
FSM2005LF	●	●	±15, ±24	2000	2500	0.2	DC ~ 150	< 1	-40 ~ 85	Φ60.5
FSM2005S	●	●	±15, ±24	2000	3000	0.5	DC ~ 150	< 1	-40 ~ 125	Φ60.5
FSD7307-C		●	+5	20 ~ 50	20 ~ 50	1	500	1	-40 ~ 105	板载式
FSD7304		●	+5	6 ~ 180	6 ~ 180	1.4	300	1	-40 ~ 85	板载式
FSD7559-B		●	+5	100 ~ 500	100 ~ 500	1.4	300	1	-40 ~ 85	板载式
FSK-SY		●	±15V	3 ~ 50	3 ~ 150	1	DC ~ 50	3	-25 ~ 85	板载式

05 轨道交通

RAIL TRANSIT



电气参数 ELECTRICAL PARAMETERS

产品型号 Product	输出 Output		供电电压 VCC(V)	额定量程 I _{pn} (A)	测量范围 I _{pm} (A)	精度 (%FS) Precision	频带宽度 (KHZ) Band Width	响应时间 (μs) Response Time	工作温度 T _A (°C)	窗口尺寸 (mm) Window Size
	电流 Current	电压 Voltage								
FSM-LTB	●	●	±15, ±24	100 ~ 500	100 ~ 800	0.5	DC ~ 100	< 1	-40 ~ 85	Φ35
FSM1005LFS	●	●	±15, ±24	500 ~ 1000	500 ~ 1500	0.2	DC ~ 150	< 1	-40 ~ 85	Φ38.5
FSM2005LF	●	●	±15, ±24	2000	2500	0.2	DC ~ 150	< 1	-40 ~ 85	Φ60.5
FSV-LV	●		±15, ±24	300V ~ 6000V	300V ~ 6000V	0.5	-	< 200	-40 ~ 85	-
FSV-L100	●		±12, ±24	50V ~ 2500V	50 ~ 3000	0.7	-	≤ 40	-40 ~ 85	-
FSV025A	●	●	±12, ±15	10mA	25mA	0.7	-	≤ 40	-40 ~ 85	板载式
FSM-LA	●	●	±12, ±15	50 ~ 200	50 ~ 200	0.7	DC ~ 100	< 1	-40 ~ 85	12.5×7

06 SVG/APF/ 电源

SVG/APF/POWER SUPPLY



电气参数 ELECTRICAL PARAMETERS

产品型号 Product	输出 Output		供电电压 VCC(V)	额定量程 I _{pn} (A)	测量范围 I _{pm} (A)	精度 (%FS) Precision	频带宽度 (KHZ) Band Width	响应时间 (μs) Response Time	工作温度 T _A (°C)	窗口尺寸 (mm) Window Size
	电流 Current	电压 Voltage								
FSM-AP	●	●	±12, ±18	50 ~ 200	50 ~ 600	0.5	DC ~ 200	< 1	-40 ~ 85	16.5×10.5
FSM-LT	●	●	±12, ±18	50 ~ 300	50 ~ 500	0.1	DC ~ 100	< 1	-40 ~ 100	Φ20
FSM-NPT		●	+5	6 ~ 50	6 ~ 150	0.5	DC ~ 200	< 1	-40 ~ 85	板载式
FSM-LTB	●	●	±15, ±24	100 ~ 500	100 ~ 800	0.5	DC ~ 100	< 1	-40 ~ 85	Φ35
FSM1005LFS	●	●	±15, ±24	500 ~ 1000	500 ~ 1500	0.2	DC ~ 150	< 1	-40 ~ 85	Φ38.5
FSM2005LF	●	●	±15, ±24	2000	2500	0.2	DC ~ 150	< 1	-40 ~ 85	Φ60.5
FSM3005	●	●	±15, ±24	1000 ~ 3000	1000 ~ 4500	0.3	DC ~ 100	< 1	-25 ~ 85	Φ120
FSM4005	●	●	±15, ±24	1000 ~ 4000	1000 ~ 6000	0.4	DC ~ 100	< 1	-25 ~ 85	Φ160.5

07 漏电流传感器

LEAKAGE CURRENT SENSOR

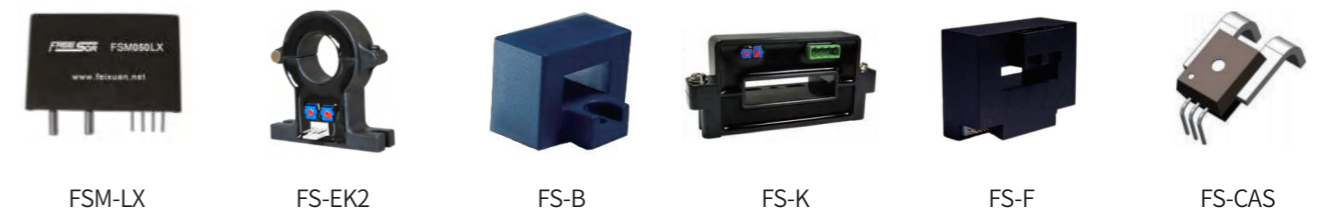


电气参数 ELECTRICAL PARAMETERS

产品型号 Product	输出 Output		供电电压 VCC(V)	额定量程 I _{pn} (A)	测量范围 I _{pm} (A)	精度 (%FS) Precision	频带宽度 (KHZ) Band Width	响应时间 (μs) Response Time	工作温度 T _A (°C)	窗口尺寸 (mm) Window Size
	数字 Digital	电压 Voltage								
D-FS-LT	●	●	±12 ~ ±15	10 ~ 100mA	10 ~ 200mA	1	DC	≤ 750ms	-10 ~ 70	Φ20
KLD1S	●	●	+12	10 ~ 20mA	80mA	1	DC	≤ 500ms	-10 ~ 70	Φ23
KLD1FS-4	●	●	+12	10mA	80mA	1	DC	-	-45 ~ 85	20*4
KLD80	●	●	+12,+24	50mA	80mA	1	DC	10ms	-45 ~ 85	Φ80
KLD33KS	●	●	+12	10mA	80mA	3	DC	≤ 500ms	-10 ~ 70	Φ60
KLD55KS	●	●	+12	10mA	80mA	3	DC	≤ 500ms	-10 ~ 70	Φ55
SLD23K		●	±12V, ±15V	10 ~ 100mA	100mA	1	DC	500ms	-40 ~ 85	Φ40
FS-R94	●	●	+12,+24	10 ~ 200mA	10 ~ 300mA	1	DC	≤ 200ms	-15 ~ 70	Φ94
SLD1S1K	●	●	+8V ~ +12V	10mA	80mA	1	DC	500ms	-10 ~ 70	Φ20
KLD1B		●	±12V	10mA	10mA ~ 100mA	1	DC	750ms	-10 ~ 70	Φ20

08 UPS/EPS/ 变频器 / 焊机 / 伺服驱动

UPS/EPS/FREQUENCY CONVERTER/WELDING MACHINE/ SERVO DRIVES



电气参数 ELECTRICAL PARAMETERS

产品型号 Product	输出 Output		供电电压 VCC(V)	额定量程 I _{pn} (A)	测量范围 I _{pm} (A)	精度 (%FS) Precision	频带宽度 (KHZ) Band Width	响应时间 (μs) Response Time	工作温度 T _A (°C)	窗口尺寸 (mm) Window Size
	电流 Current	电压 Voltage								
FSM-LX		●	±15	5 ~ 75	5 ~ 150	0.5	DC ~ 200	< 1	-40 ~ 85	板载式
FS-EK2		●	±12, ±15	300 ~ 2000	300 ~ 3000	1	DC ~ 20	≤ 7	-25 ~ 85	Φ40.5
FS-B		●	±12, ±15	50 ~ 600	100 ~ 900	1	DC ~ 20	3	-40 ~ 125	21×10
FS-K		●	±12, ±15	300 ~ 2000	300 ~ 2500	1	DC ~ 20	≤ 7	-25 ~ 85	64×16
FS-F		●	±12, ±15	100 ~ 2000	200 ~ 2500	1	DC ~ 20	≤ 7	-25 ~ 125	41×12
FS-CAS		●	+5	50 ~ 250	50 ~ 250	1	170	3	-40 ~ 150	板载式

09 数据中心 / 基站

DATA CENTER/BASE STATION



FS-B



FS-E



FS-F



FS-K



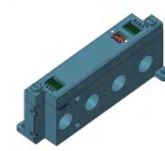
FS-KF2



FS-KA



KLD1S



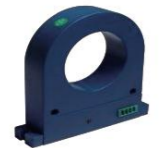
KLD1FS-4



KLD80



KLD33KS



KLD55KS



FS-EK2



FS-EK1



SLD1S1K



KLD1B

电气参数 ELECTRICAL PARAMETERS

产品型号 Product	输出 output		供电电压 VCC(V)	额定量程 I _{pn} (A)	测量范围 I _{pm} (A)	精度 (%FS) Precision	频带宽度 (KHZ) Band Width	响应时间 (μs) Response Time	工作温度 T _A (°C)	窗口尺寸 (mm) Window Size
	数字 Digital	电压 Voltage								
FS-B		●	±12, ±15	50 ~ 600	100 ~ 900	1	DC ~ 20	3	-40 ~ 125	21×10
FS-E		●	±12, ±15	30 ~ 800	600 ~ 1000	1	DC ~ 20	3	-40 ~ 85	Φ20
FS-F		●	±12, ±15	100 ~ 2000	200 ~ 2500	1	DC ~ 20	≤ 7	-25 ~ 125	41×12
FS-K		●	±12, ±15	300 ~ 2000	300 ~ 2500	1	DC ~ 20	≤ 7	-25 ~ 85	64×16
FS-KF2		●	±12, ±15	500 ~ 2000	500 ~ 3000	1	DC ~ 20	≤ 7	-25 ~ 85	85×27
FS-KA		●	±12, ±15	600 ~ 5000	600 ~ 7500	1	DC ~ 20	≤ 7	-25 ~ 85	104×36
KLD1S	●	●	+12	10 ~ 20mA	80mA	1	DC	≤ 500ms	-10 ~ 70	Φ23
KLD1FS-4	●	●	+12	10mA	80mA	1	DC	/	-45 ~ 85	20*4
KLD80	●	●	+12, +24	50mA	80mA	1	DC	10ms	-45 ~ 85	Φ80
KLD33KS	●	●	+12	10mA	80mA	3	DC	≤ 500ms	-10 ~ 70	Φ60
KLD55KS	●	●	+12	10mA	80mA	3	DC	≤ 500ms	-10 ~ 70	Φ55
FS-EK2		●	±12, ±15	300 ~ 2000	300 ~ 3000	1	DC ~ 20	≤ 7	-25 ~ 85	Φ40.5
FS-EK1		●	±12, ±15	50 ~ 500	50 ~ 1000	1	DC ~ 20	≤ 7	-25 ~ 85	Φ21
SLD1S1K	●	●	+8V ~ +12V	10mA	80mA	1	DC	500ms	-10 ~ 70	Φ20
KLD1B		●	±12V	10mA	10mA ~ 100mA	1	DC	750ms	-10 ~ 70	Φ20

10 掘进机 / 采煤机

TUNNEL BORING MACHINE/COAL MINING MACHINE



FS-RST1 (电控箱)



FS-RST2 (电控箱)



FS-W50(CAN)3孔 (矿用)



FS-W35(CAN)3孔 (矿用)



FS-RST3 (电控箱)



FS150000KUE/4V

电气参数 ELECTRICAL PARAMETERS

产品型号 Product	输出 Output		供电电压 VCC(V)	额定量程 I _{pn} (A)	测量范围 I _{pm} (A)	精度 (%FS) Precision	频带宽度 (KHZ) Band Width	响应时间 (μs) Response Time	工作温度 T _A (°C)	窗口尺寸 (mm) Window Size
	电流 Current	电压 Voltage								
FS-RST1	●		+20 ~ +32	100 ~ 1000	100 ~ 1200	1	DC 20 ~ 6000HZ	150ms	-25 ~ 85	Φ32
FS-RST2		●	+20 ~ +32	100 ~ 1000	100 ~ 1200	1	DC 20 ~ 6000HZ	150ms	-25 ~ 85	Φ32
FS-RST3	●		+24	10 ~ 200	10 ~ 240	1	DC 20 ~ 6000HZ	150ms	-25 ~ 85	Φ20
FS150000KUE/4V		●	±15	10000 ~ 150000	10000 ~ 160000	1	DC ~ 10	< 10	-25 ~ 85	216×210

FS-W35(CAN)3孔 (矿用)

型号 Models	电源 Power Supply	输入 Input	输出 Output	隔离耐压 Isolated Withstand Voltage	负载 Loads	备注 Remark
FS-W35-IPN/CAN	DC9-30V	AC0-**A (可定制 10-2500A)	CAN2.0A; 250kbps	AC6000V	匹配电阻 120Ω 需外置	CE
FS-W35-IPN/C125	DC9-30V		CAN2.0A; 125kbps	AC6000V		CE

FS-W50(CAN)3孔 (矿用)

型号 Models	电源 Power Supply	输入 Input	输出 Output	隔离耐压 Isolated Withstand Voltage	负载 Loads	备注 Remark
FS-W50-IPN/CAN	DC9-30V	AC0-**A (可定制 20-3500A)	CAN2.0A; 250kbps	AC6000V	匹配电阻 120Ω 需外置	CE
FS-W50-IPN/C125	DC9-30V		CAN2.0A; 125kbps	AC6000V		CE