

# 俊善模塑

**JUN SUN MOULD**



台州市俊善模塑有限公司

TAIZHOU JUN SUN MOULD CO.,LTD

地址：浙江省台州市黄岩区新前模具小镇乐业路1号

Add: 169# XinChen Road, Xinqian Street, HuangyanDistrict, Taizhou ,Zhejiang,China Zip: 318020

Email: mould@junsunplast.com ; info@junsunplast.com

Website: www.junsunplast.com; www.junsunmould.com

Phone & What's up: 0086 152 6886 9089

台州市俊善模塑有限公司

TAIZHOU JUN SUN MOULD CO.,LTD

*Your Vision, Our Mold | JunSun Delivers*

构想由你，成型有我·俊善担当



Taizhou Junsun Mould Co.,Ltd is a manufacturer specializing in mold design, mold production, plastic parts production, sales, and services. For many years, relying on the pursuit of new and innovative goals, we have always adhered to the reputation principle of survival through quality, and embarked on a path of positive progress, stable and rapid development. We pay attention to the quality and delivery time of our mould and plastic parts, and have won widespread praise and customer base with excellent product quality. We have strong processing capabilities and excellent talents, and welcome new opportunities and challenges with a constantly advancing spirit. The scope of production includes packing containers, disposable Tableware, household products, crate, pallets, dustbins, auto parts etc... Customized plastic products and molding service.

台州市俊善模塑有限公司（Taizhou Junsun Mould Co.,Ltd）是一家专业从事模具设计、模具生产、塑件生产、销售和服務的制造商。多年来靠着求新创新的追求目标，始终坚持以质量求生存的信誉宗旨，走出一条积极进取，平稳快速发展的道路。我们注重产品的品质和交期，以优异的产品质量赢得了广泛的赞誉和客户群，拥有强劲的加工能力和优秀人才，并以不断前进的精神面貌迎接新机遇和挑战。生产范围包括食品包装类、家居用品、日用品、运输类周转箱、托盘、垃圾桶类、工业汽配类。并且提供塑件批量生产与产品定制等服务。



**加工能力**

多样式的加工设备满足多种加工需求

Tooling Capacity

**加工工艺**

合理的加工工艺满足不同产品要求

Tooling Technology

**加工精度**

严格的尺寸控制让零件更精密

Tooling Precision

设备名称 machine name	规格 spec	规格 spec
高速铣 / CNC	1600*1300*1000mm	3台/3sets
高速铣 / CNC	1100*600*400mm	1台/1sets
5轴深孔钻/5axes Deep Hole Drilling	2500*2000*1500mm	1台/1sets
深孔钻 / Deep Hole Drilling	2000*1500*1300mm	3台/3sets
深孔钻 /Deep Hole Drilling	2500*2000*1500mm	1台/1sets
数控镗床 / Boring machine	2000*1400*1200mm	1台/1sets
数控镗床 /Boring machine	1300*700*600mm	1台/1sets
高速精雕 / CNC engraving	600*600*300mm	6台/6sets
高速精雕 / CNC engraving	800*800*350mm	1台/1sets
双头电火花/Double head EDM	1800*800*600mm	2台/1sets
双头电火花/Double head EDM	2200*1200*1500mm	2台/1sets

# 加工设备

Tooling Machines



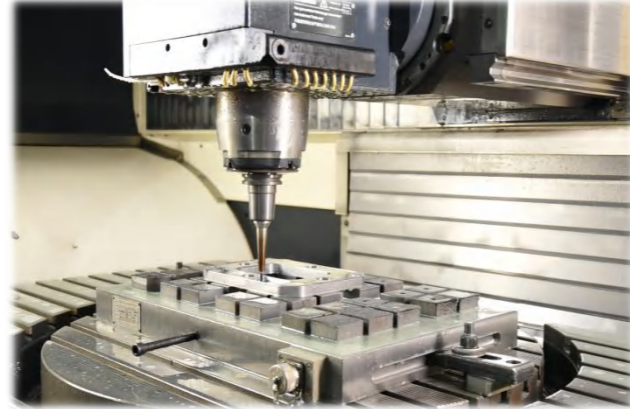
严谨科学合理的加工工艺方案、高效率及严格的尺寸控制为模具品质奠定了坚实的基础。

The rigorous, scientific, and reasonable tooling technology, along with efficient and strict dimension controls, lay a solid foundation for the quality of moulds.

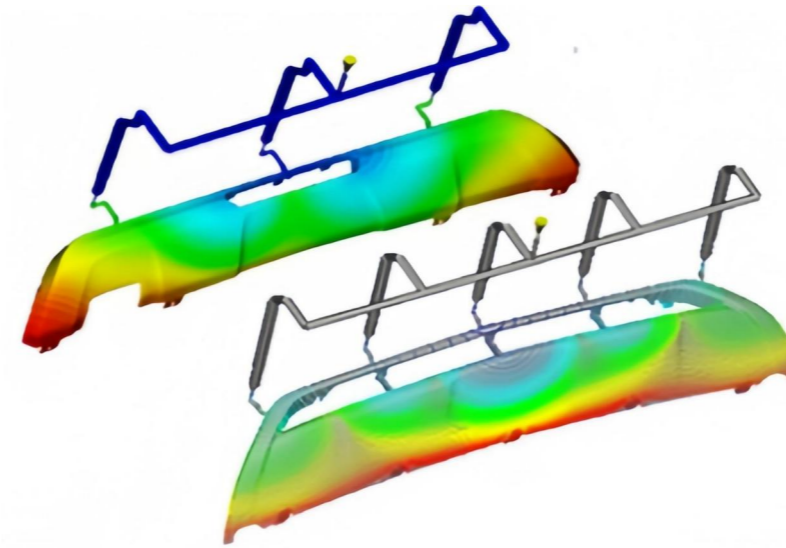
## 我们的服务 Our Service



- 产品设计 Part Design
- 产品优化 Potimal Part Design
- 模具设计 Mould Design



- 精密的加工设备
- Tooling Machines



重视塑件的前期可行性分析，如：产品成型分析、进浇位置、困气等可能出现的问题提前发现，避免模具生产后出现问题

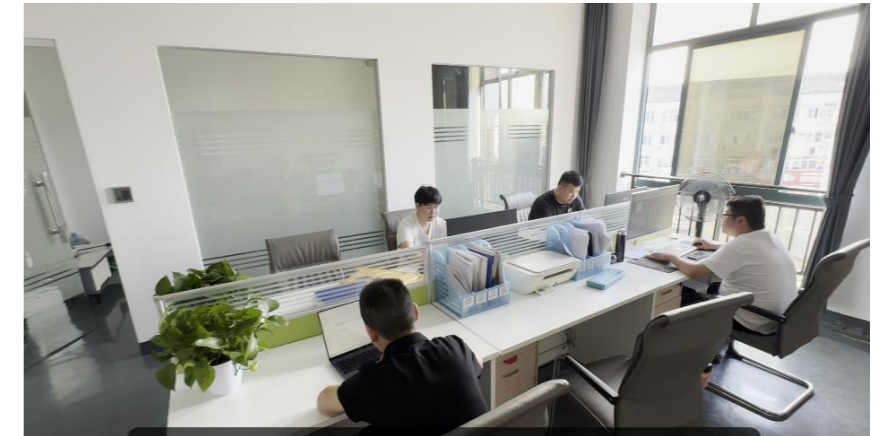
Attach importance to the early feasibility analysis of plastic parts, such as: Part molding, injection gate location, part surface effects etc., to prevent any defect after mould production.



- 丰富的模具制造经验
- Extensive knowledge of Mould structure and manufacturing



- 塑件定制生产
- Plastic part molding service



严谨的模具质检系统，在模具零件加工过程中进行尺寸管控，严格遵守公差标准，确保尺寸与图纸一致

Strictly mould quality inspection system that implements dimensional control during the mould component machining phase, strictly adheres to tolerance standards, and ensures dimensional consistency with the drawings.

我们的产品 Our Products

包装类  
包装类

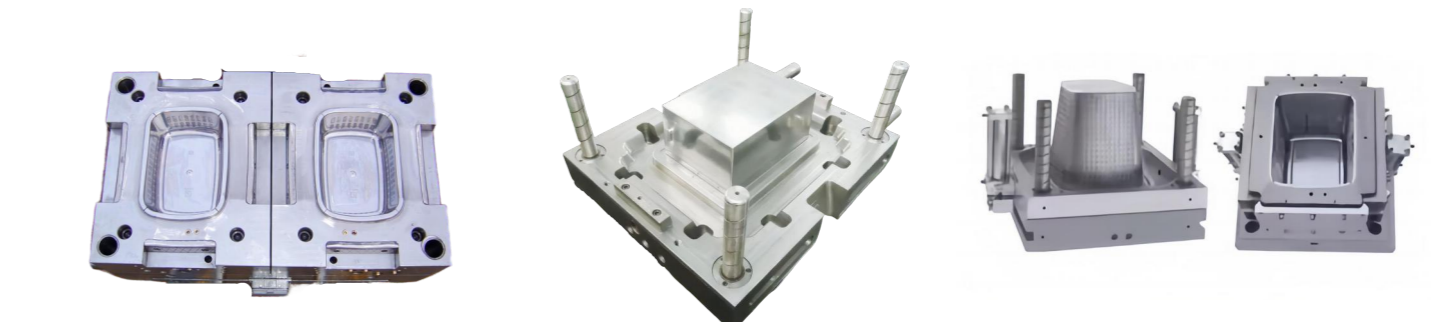


Package Mould



我们的产品 Our Products

家居类



Household Mould

我们的产品 Our Products

# 物流运输类



Crate & Pallet Mould

我们的产品 Our Products

桌椅类  
产品类

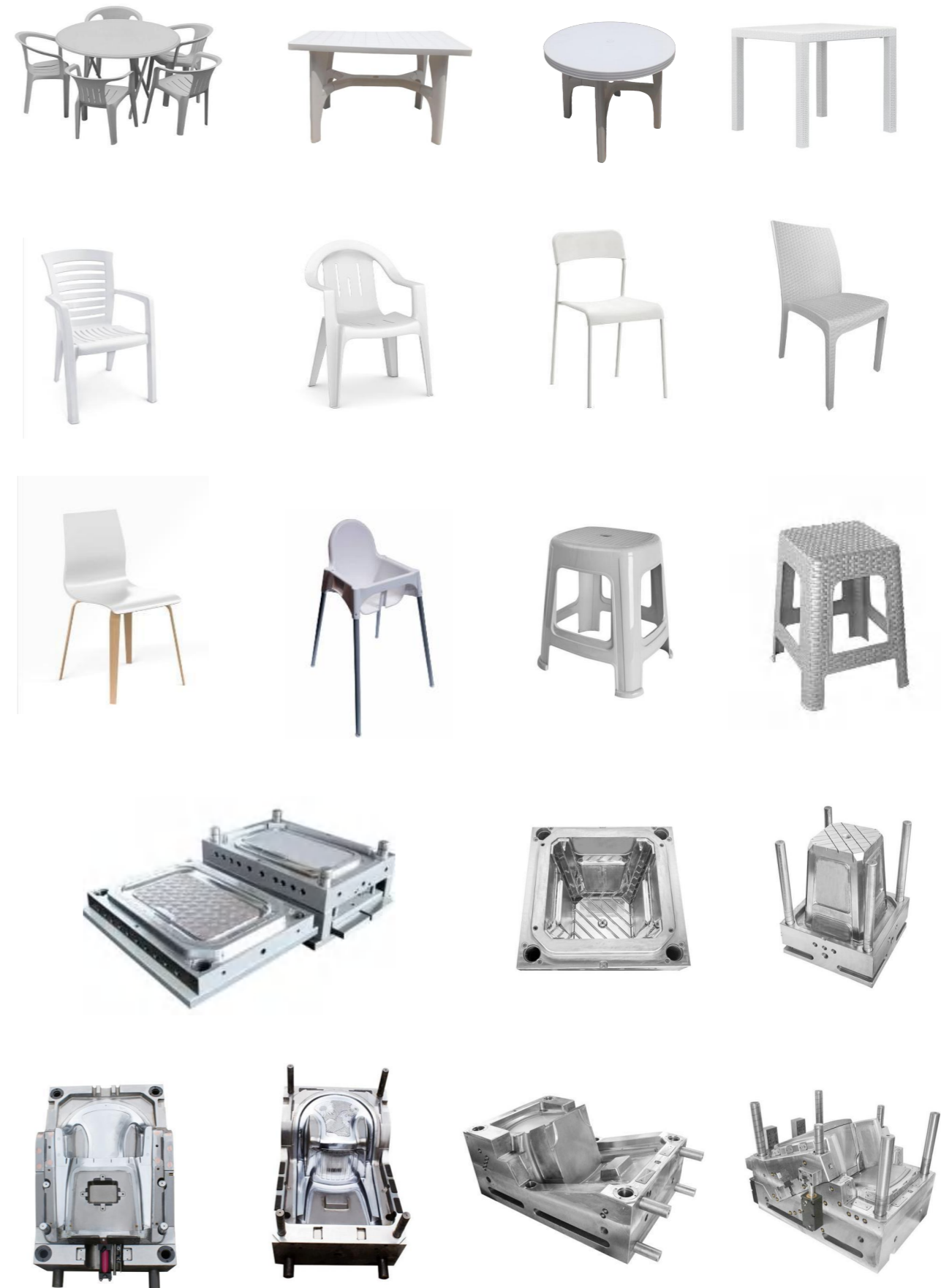
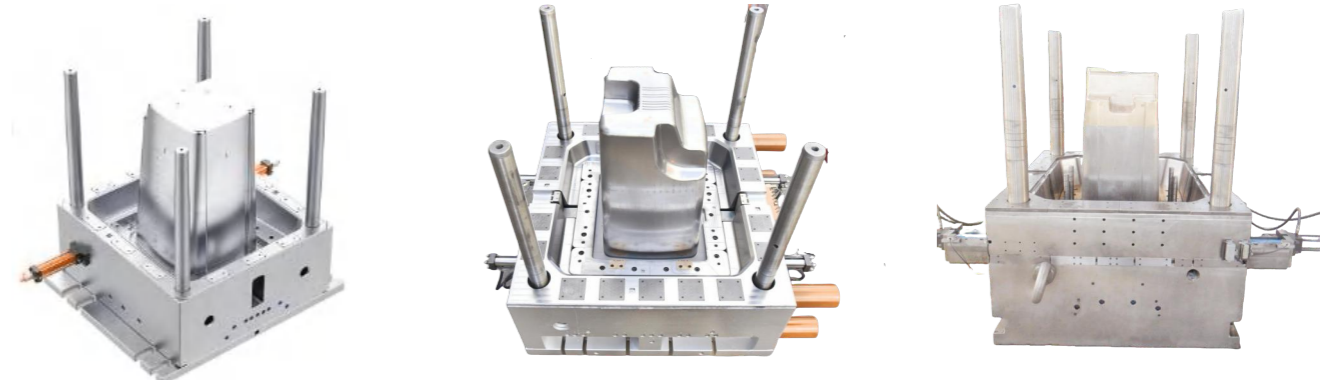
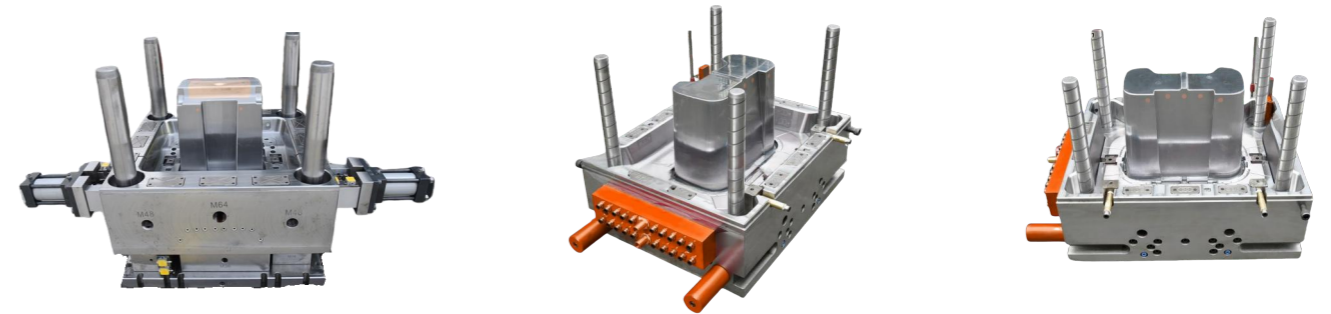


Table & Chair Mould

我们的产品 Our Products

# 垃圾桶类

垃圾桶类



Waste Bin Mould

我们的产品 Our Products

工业 汽配类



Industrial & Automotive Moulds