



*AludecoR*  
Metal Composite Panel

M A S

T E E R

HERITAGE

「 Master Shade Card 」



# AludecoR

Metal Composite Panel

As a national leader in the metal composite panel industry, Aludecor stands at the forefront of innovation, quality, and sustainability. Our dedication to perfection earned us the European Aluminium Award - ESQR (European Society for Quality Research). With over two decades of expertise, we have consistently led the way in redefining modern architecture through our cutting-edge aluminium composite panels (ACPs). Our state-of-the-art facilities include seven advanced lamination lines, giving us the unmatched capacity to manufacture 10.08 million square meters annually. Aludecor is the only company to have a pelletizing line for manufacturing FR granules, ensuring us to advance our leadership in safety and technology. Trusted by architects and industry professionals nationwide, we have beautified over 2 lac projects across India and are proud of more than 10,000 projects that have stood the test of time, lasting over a decade. By blending aesthetic excellence with high-performance solutions, Aludecor continues to inspire creativity and elevate the built environment, all while delivering versatile and durable cladding solutions that meet the evolving demands of modern architecture.

AludecoR  
**GRANICIA**  
SERIES  
Terrazzo Inspired ACPs

AludecoR  
**MASON MARK**  
SERIES  
Masonry Inspired ACPs

AludecoR  
**EARTHCOAT**  
SERIES  
Timeless Terracotta Crafts

# HERITAGE

“Explore the world of artistic elegance”

**MASON MARK**

**GRANICIA**

**EARTHCOAT**

- ◆ 1st ACP manufacturer with in-house NABL accredited R&D FR Lab (as per ISO/IEC 17025:2017)
- ◆ Only company in India to have a palletising line for manufacturing FR granules
- ◆ Over 23 years of championing the metal composite panel industry in India
- ◆ Available in over 250 cities across India & select international presence
- ◆ Over 10.08 million square meters annual production capacity
- ◆ 500+ shades, personalised to fit your world
- ◆ Over 2 lac projects beautified in India
- ◆ 7 State-of-the-art lamination lines
- ◆ 1st Aluminium coil coaters in India



# GRANICIA

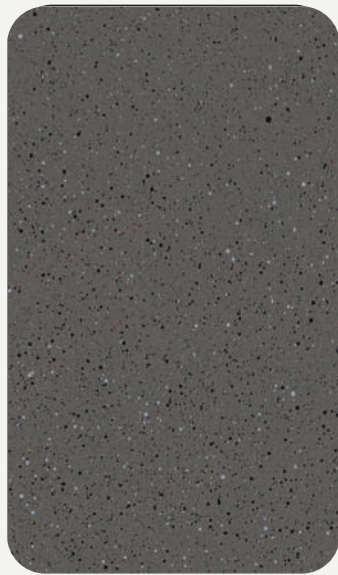
At Aludecor, we honour the legacy of terrazzo with Granicia, a series that pays tribute to its artisanal roots while boldly redefining its place in contemporary architecture.

Each shade in the Granicia series is brought to life through **Spray Fusion Technology**, which is a revolutionary, first-in-the-world innovation by an ACP manufacturer. Developed in our state-of-the-art, in-house R&D lab, this patented\* multi-coat system not only fuses aesthetics and performance but also ensures enhanced colour consistency and longer-lasting finishes, reducing maintenance costs for years to come. It captures the soft gradients, intricate layering, and delicate textures that made terrazzo iconic, while delivering superior durability, surface integrity, and safety.

Made in India, imagined for the world!

Granicia is more than a surface solution. It's the fusion of heritage and innovation, crafted to inspire a new generation of bold, meaningful design.

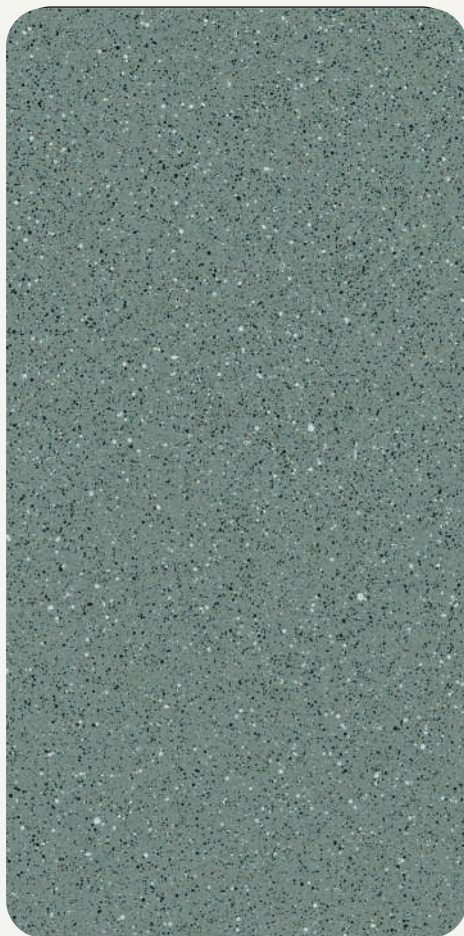
# Grained grace



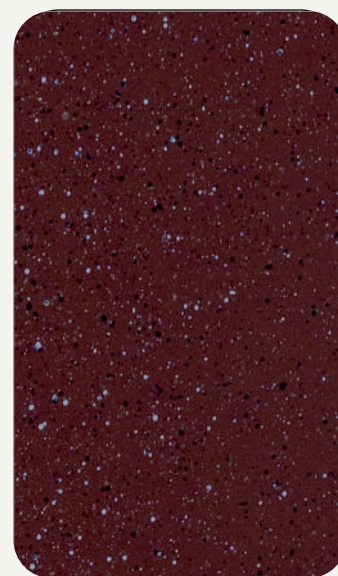
**GR 01**  
Coal Storm



**GR 02**  
Blackgrain



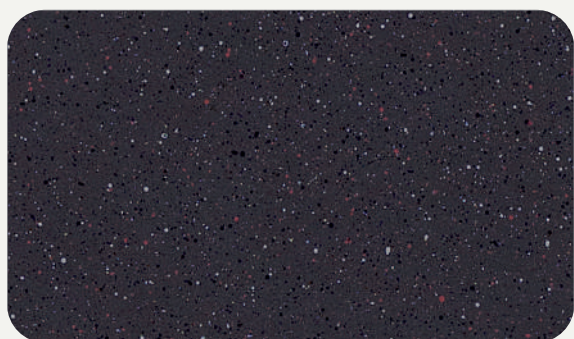
**GR 03**  
Dark Pebble



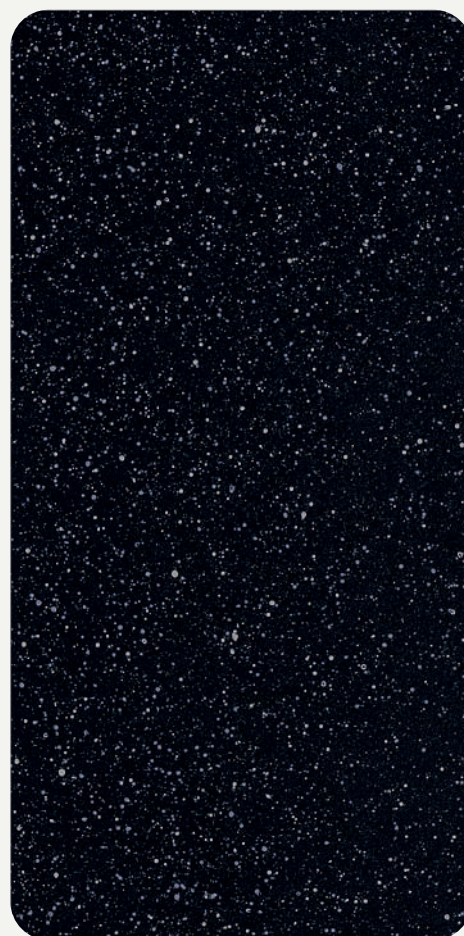
**GR 04**  
Terrabind



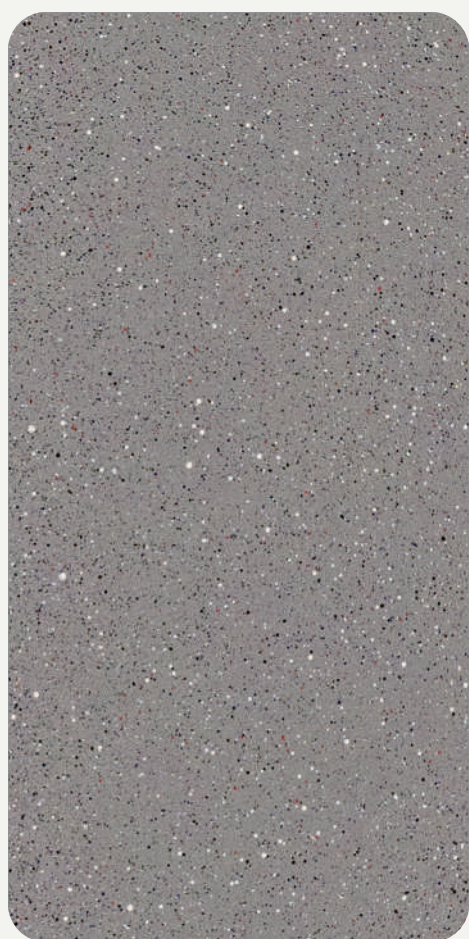
# legacy OF TERRAZO



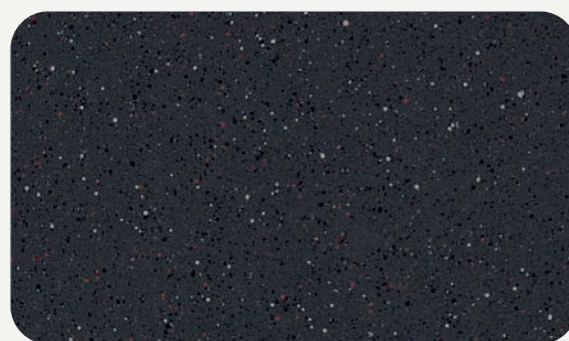
**GR 05**  
Smokey Mist



**GR 06**  
Charcoal

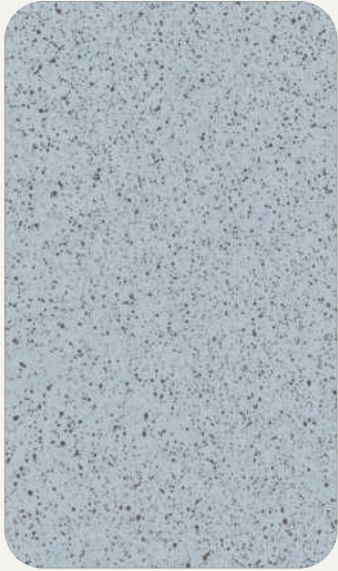


**GR 07**  
Slate pulse

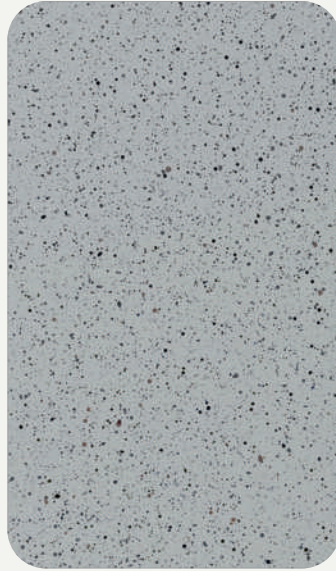


**GR 08**  
Shadow Field

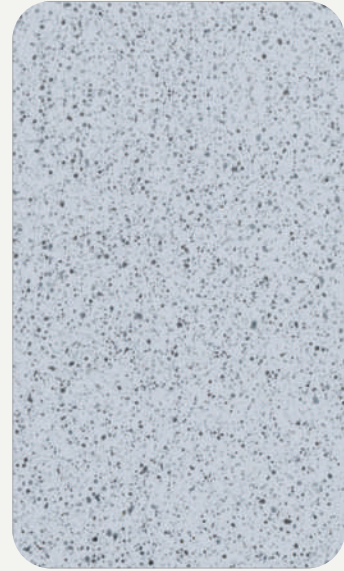




**GR 09**  
Moonstone



**GR 10**  
Ash Flakes



**GR 11**  
Lunar Dust





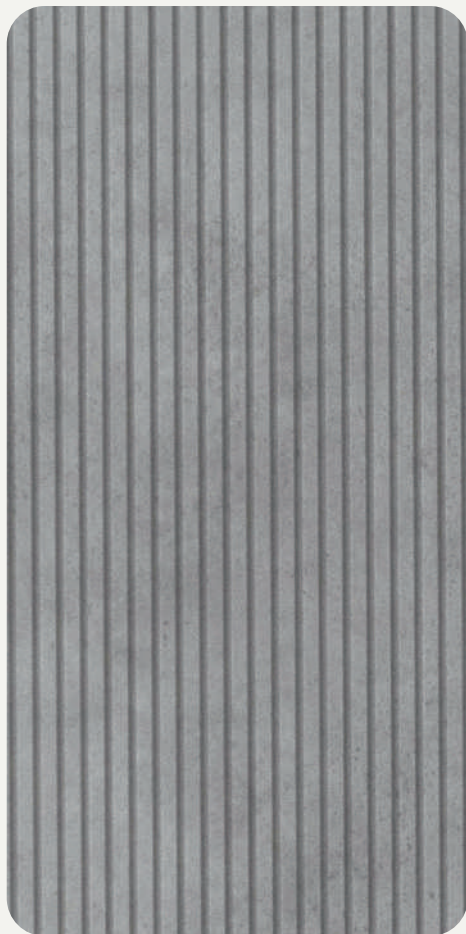
# MASON MARK

Mason Mark honours the skilled masons whose dedication and craftsmanship have shaped the spaces we call home and laid the foundation of our cities. Aludecor draws inspiration from this timeless craft, translating its raw, elemental beauty into contemporary designs that embody strength and resilience. With earthy tones and cement-inspired textures, Mason Mark reinterprets traditional building materials for modern architecture. It's not just a replica of concrete; it refines and transforms it, turning raw cement into a sophisticated visual experience. This collection is more than just a surface-it's a tribute to the masons whose craft continues to build the world around us.

# MASONRY MAGIC



**MM 11**  
Roman Wall



**LVR 11**  
Strata Roman Wall





**MM 12**  
Florence Wall



**LVR 12**  
Strata Florence Wall



**LVR 13**  
Strata Bruges Wall



**MM 13**  
Bruges Wall



# ETCHED LEGACY



**MM 14**  
Giza Wall



**LVR 14**  
Strata Giza Wall





For the lovers of strong and sturdy concrete, Aludecor presents these exclusive series that celebrates the naturally roughened surfaces of concrete.





**MM 15**  
Athena Wall



**LVR 15**  
Strata Athena wall



**LVR 16**  
Strata Yorkshire Wall



**MM 16**  
Yorkshire Wall





# EARTHCOAT

The Earthcoat series draws inspiration from the rich hues and natural beauty of terracotta as it evolved across different cultures and landscapes. This carefully curated collection highlights the range of colors found in terracotta from around the world. Each shade is a tribute to the land and history that have shaped this timeless material. With Earthcoat, we invite you to experience the fusion of ancient traditions and modern design, embodied in every color that connects us to the earth's rich and enduring legacy.



**EC 01**  
Moorish Clay



**EC 02**  
Tuscan Clay

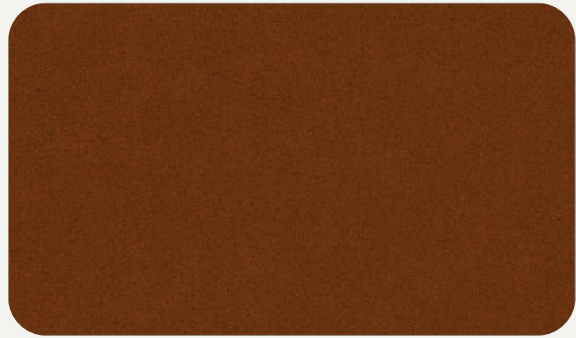


**EC 03**  
Andes Clay



**EC 04**  
Nile Clay





**EC 05**  
Tibetan Clay



**EC 06**  
Bengal Clay



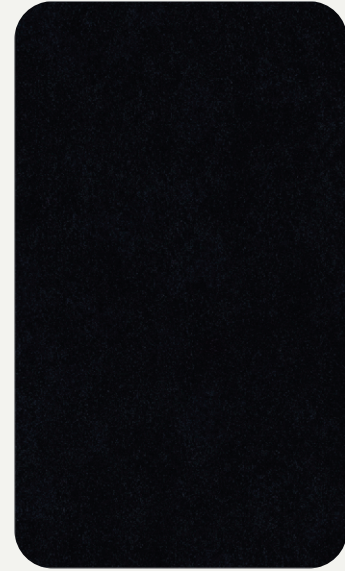
# essential artistry



**EC 07**  
Aegean Clay



**EC 08**  
Harappan Clay



**EC 09**  
Mesopotamian Clay



## Our Other Available Series

### MINERALS

<p><i>AludecoR</i> <b>RUGGED METAL</b> SERIES Echoes of timeless ACPs</p>	<p><i>AludecoR</i> <b>WABI SABI</b> SERIES Imperfectly perfect ACPs</p>	<p><i>AludecoR</i> <b>CORTINA</b> SERIES 3D-striped ACPs</p>	<p><i>AludecoR</i> <b>ZINCHO</b> SERIES Zinc-alike ACPs</p>
---	---	--	---

### NATURE

<p><i>AludecoR</i> <b>ACE</b> SERIES 6 mm ACPs</p>	<p><i>AludecoR</i> <b>TIMBER</b> SERIES Wood-like ACPs</p>	<p><i>AludecoR</i> <b>PEDRA</b> SERIES Stone-finish ACPs</p>	<p><i>AludecoR</i> <b>SAND</b> SERIES World's first sand-finish ACPs</p>	<p><i>AludecoR</i> <b>RUSTIC</b> SERIES Next-to-Nature ACPs</p>
--	--	--	--	---

### REGULAR

<p><i>AludecoR</i> <b>SOLID</b> SERIES Solid Shades with Lasting Strength</p>	<p><i>AludecoR</i> <b>GLOZ</b> SERIES Vibrant and dynamic ACPs</p>	<p><i>AludecoR</i> <b>BRUSHED</b> SERIES ACPs with master strokes</p>
<p><i>AludecoR</i> <b>SPARKLING</b> SERIES Glitter-effect ACPs</p>	<p><i>AludecoR</i> <b>MIRROR</b> SERIES Super-reflective ACPs</p>	

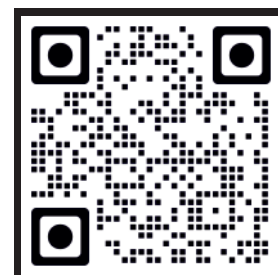
## Also Available In

<p><i>AludecoR</i> <b>Fire Wall</b> FR MCPs*</p>	<p><i>AludecoR</i> <b>ARMOR</b> SERIES Anti-insect ACPs</p>	<p><b>VI-SECURE</b> Anti-microbial ACPs</p>
--	---	---

Ask  **MATgenie**  
your AI guide to building materials.

Developed by Aludecor, MATGenie helps architects, developers, contractors, and fabricators make faster, smarter material decisions.

Scan to  
Download



# TECHNICAL SPECIFICATIONS

Particulars	Product Composition			
	AL 63	AL 45	AL 43	AL 33
Product grade	AL 63	AL 45	AL 43	AL 33
Total thickness of the panel	6 mm	4 mm	4 mm	3 mm
Thickness of the aluminium skin (Top skin/ bottom skin)	0.25 mm	0.50 mm	0.25 mm	0.25 mm
Thickness of LDPE/Mineral Core	5.5 mm	3 mm	3.5 mm	2.5 mm
Aluminium Alloy Grade	AA1100 (Supplier: Hindalco)	AA3105 / AA5005* (Supplier: Hindalco)	AA1100 (Supplier: Hindalco)	AA1100 (Supplier: Hindalco)
Coating Thickness (Front Coil) Granicia	50µ - 70µ (Spray Fusion Paint System) <b>Suppliers:</b> AkzoNobel/PPG/ Beckers/Nippon	50µ - 70µ (Spray Fusion Technology) <b>Suppliers:</b> AkzoNobel/PPG/ Beckers/Nippon	50µ - 70µ (Spray Fusion Technology) <b>Suppliers:</b> AkzoNobel/PPG/ Beckers/Nippon	50µ - 70µ (Spray Fusion Technology) <b>Suppliers:</b> AkzoNobel/PPG/ Beckers/Nippon
Coating Thickness (Front Coil) Earthcoat	35µ - 55µ (Two Coat Paint System) <b>Suppliers:</b> AkzoNobel/PPG/ Beckers/Nippon	35µ - 55µ (Three Coat Paint System) <b>Suppliers:</b> AkzoNobel/PPG/ Beckers/Nippon	35µ - 55µ (Three Coat Paint System) <b>Suppliers:</b> AkzoNobel/PPG/ Beckers/Nippon	35µ - 55µ (Three Coat Paint System) <b>Suppliers:</b> AkzoNobel/PPG/ Beckers/Nippon
Coating Thickness (Front Coil) Mason Mark	30µ - 50µ (Two Coat Paint System) <b>Suppliers:</b> AkzoNobel/PPG/ Beckers/Nippon	30µ - 50µ (Three Coat Paint System) <b>Suppliers:</b> AkzoNobel/PPG/ Beckers/Nippon	30µ - 50µ (Three Coat Paint System) <b>Suppliers:</b> AkzoNobel/PPG/ Beckers/Nippon	30µ - 50µ (Three Coat Paint System) <b>Suppliers:</b> AkzoNobel/PPG/ Beckers/Nippon
Coating Thickness (Back Coil)	4µ - 7µ Service Coat	4µ - 7µ Service Coat	4µ - 7µ Service Coat	4µ - 7µ Service Coat

Product Tolerance	Width	Length	Thickness		Squareness	Bow	
			Coil	Panel		AL 45	AL 63, AL 43 & AL 33
	± 2.0 mm	± 4.0 mm	± 0.03 mm	± 0.2 mm	Maximum 5.0 mm	Maximum 0.5% of width and/or length	Maximum 0.8% of width and/or length

\*Conditions Apply

# Aludecor<sup>®</sup>

Metal Composite Panel

## Aludecor Lamination Pvt. Ltd.

### Head Office - Kolkata

Martin Burn Building, Suite 52, Floor 5, 1, R. N. Mukherjee Road,  
Kolkata – 700001, West Bengal, P: +91 33 4027 6600

### Works - Haridwar

#### (Unit 1)

Plot 95/96/97, Sector V, IIE Sidcul,  
Ranipur, BHEL Haridwar,  
Uttarakhand - 249403  
P +91 1334 239 343

#### (Unit 2)

Plot 31A, Sector 11,  
IIE Sidcul, Ranipur,  
BHEL Haridwar,  
Uttarakhand - 249403

#### (Unit 3)

Industrial Plot No. 23, Industrial  
Park IV Begampur Pargana,  
Roorkee, Haridwar,  
Uttarakhand - 249405

☎ Toll Free 1800 102 0407 ✉ info@aludecor.com 🌐 www.aludecor.com

**ZONAL OFFICES** - Chennai | Mumbai | New Delhi

**BRANCH OFFICES** - Ahmedabad | Bangalore | Calicut | Guwahati | Hubli | Hyderabad |  
Indore | Jaipur | Kochi | Lucknow | Patna | Pune | Vijayawada | Zirakpur

### OFFICES - OVERSEAS

**(USA) Texas** : 13201 Northwest Freeway, Suite 800, Houston, TX – 77040, USA  
info@aludecor.us | www.aludecor.us | P: +1 716 903 4126

**(Germany) Hamburg** : Bei den Mühren 1, Hamburg – 20457, Germany  
info@aludecor.com | www.aludecor.com

**(Spain- Partner) Murcia** : San Javier, RM19-Km1 Polígono Industrial Cartago,  
Baños y Mendigo, Murcia – 30155, Spain  
info@aludecor.com | www.aludecor.com | contacto@aludecor.es | www.aludecor.es

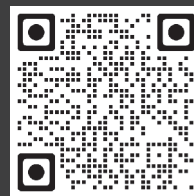
**CIN : U27203WB2004PTC099221**

A percentage of the proceeds from our sales is forwarded towards welfare purposes.

Follow us on



WORLD'S MOST TESTED MCP BRAND  
**205**  
TESTS



SCAN QR CODE  
FOR ENQUIRY