

# MANUFACTURER - EXPORTER FOR COMPLETE RANGE OF UNIFORM



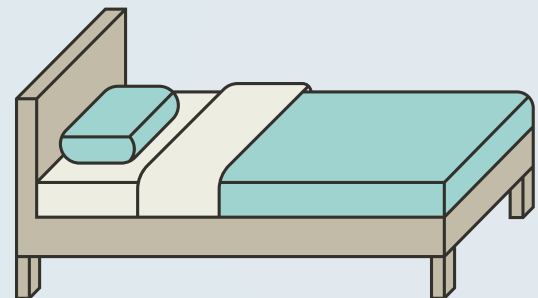
**Hospital**



**Hotel**



**Industrial & Pharma**



**Bed Linen**

**PNAK**<sup>TM</sup>  
THE DRESS CODE

ISO : 9001:2015

P A N I A A K H E R E G A L I A I N D I A L L P

Ahmedabad. Gujarat . INDIA

## Scrub Suits - Cotton



**40'S Fine tuned  
- Pure Cotton -**

**Navy Blue**

**Code : SSDubCtn - 002**

## Scrub Suits - Lycra



**Wine Lycra**  
Code : SS2WWine - 006



**Navy Blue Lycra**  
Code : SS2W05 - 009



**Black Lycra**  
Code : SS2WBlack - 007



**Dark Grey Lycra**  
Code : SS2WDGL - 010

## Scrub Suits - TT



**Black**  
Code : SSTTBLACK - 011



**Sky Blue**  
Code : SSTT02Skyblue - 012



**Purple**  
Code : SSTTPurple - 013



**Baby Pink**  
Code : SSTTBabypink - 014



**Navy Blue**  
Code : SSTT05NBlue - 015



**Steel Grey**  
Code : SSTTSteelGrey - 016



**Maroon**  
Code : SSTTMaroon - 103



**ROYAL BLUE**  
Code : SSTTROYALBLUE - 104



**ROYAL BLUE**  
Code : SSTTROYALBLUE - 105



**ROYAL BLUE**  
Code : SSTTROYALBLUE - 106

## Apron / Lab Coat



**Apron Yogi Half Sleeves**  
Code : ApronHSYogi - 017



**Apron Yogi Full Sleeves**  
Code : ApronFSYogi - 018



**Lab Coat Knee length Full Sleeves**  
Code : LCYogiFSKneelength - 019



**Apron Yogi Half Sleeves - Navy Blue**  
Code : ApronHSYogi05NBlue - 020



**Apron Yogi Half Sleeves - Sky Blue**  
Code : ApronHSYogi02SBlue - 021



**Apron Yogi Half Sleeves - Coffee**  
Code : ApronHSYogiCoffee - 022

# Patient Range

- Patient Dress - Top & Bottom
- Patient Gown - Bath Robe
- Patient Gown - Back Tie
- Patient Gown - Front Open
- Patient Dress - TKR
- Chaniyo TOP
- Lungi Top
- Mother Gown



**Back Tie**  
Code : PGBDDL - 023



**Bath Robe**  
Code : PGBRDBL - 024



**Front Open**  
Code : PGFO- 025



**Patient Dress- set of Top & bottom**  
Code : PDDBL - 026

## Patient Range

₹ 290  
+ 5% GST & Transport



**Mother Gown**  
Code : PGMthr - 027



**TKR**  
Code : PDTKR - 030



**Pedia Patient Dress**  
Code : PDPEDIA - 032

## Surgeon Gown



**Surgeon Gown- Wrap Around**  
Code : SDPVDF - 035



**Surgeon Gown- Back Tie**  
Code : SGPVAL - 036



**Impervious Surgeon Gown- Back Tie**  
Code : ISGPVAL - 037



**Impervious Surgeon Gown- Wrap Around**  
Code : ISGPVDF - 038

## OT Linen



**Lapro sheet with Pockets**  
Code : OTLINEN - 039



**C Arm /IITV Cover**  
Code : OTLINEN - 040



**Screen Curtain**  
Code : OTLINEN - 041



**Mayo Trolley Cover**  
Code : OTLINEN - 042



**Draw sheet - Impervious**  
Code : OTLINEN - 043



**Hole Sheet**  
Code : OTLINEN - 044



**Plain Sheet**  
Code : OTLINEN - 045



**Cuffon**  
Code : OTLINEN - 046



**Cap & Mask**  
Code : OTLINEN - 047



**Trolley Cover**  
Code : OTLINEN - 048



**Cath Lab Hole Sheet**  
Code : OTLINEN - 049



**OT Table Sheet**  
Code : OTLINEN - 050



**CVP Cover**  
Code : OTLINEN - 051



**Procedure Apron**  
Code : OTLINEN - 052



**Crash Cart**  
Code : OTLINEN - 053



**Leggins**  
Code : OTLINEN - 054



**Mackintosh**  
Code OTLINEN - 055



**Stretcher**  
Code : OTLINEN - 056  
Code : OTLINEN - 057



**Procedure Apron  
- Raxin**  
Code : OTLINEN - 058

## Bed Linen



Code : BedLinen- 059



Code : BedLinen- 060



Code : BedLinen- 061



Code : BedLinen- 065



Code : BedLinen- 062



Code : BedLinen- 063



Code : BedLinen- 064

## Bed Sheets with Pillow Cover- 7 Days 7 Colors



Code : PediaBedLinen- 066



Code : PediaBedLinen- 067



Code : PediaBedLinen- 068

## Pedia / Kids Bed Sheets with Pillow Cover - Cartoon / Nursery Print



Code : Blanket- 069



Code : Blanket- 070



Code : Blanket- 071



Code : Blanket- 072



Code : Chorsa- 073

## Bnalets - Dohar - Chorsa /Kambal



Pillow with Stiche Raxin Cover  
Code : Blanket- 074



Pillow - Recron  
Code : Blanket- 075



**Polo T Shirt**

Code : TShirt- 076



**Round Neck - Eco**

Code : TShirt- 079

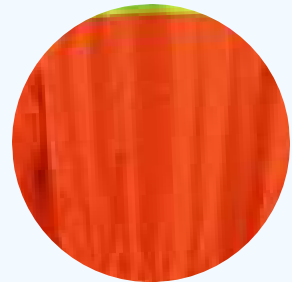
# Industrail Uniform



**Code : Navy Blue 107**



**Code : Khakhi 109**



**Code : Ornage 110**

100% Cotton 200 GSM

- Coverall with 2 Flap , 2 Slash . 1 Back 1 Pen pockets ,



**Code : Red 108**



**Code : Grey 111**



**Code : Royal Blue 112**

# Industrail Uniform



## FR

100% Cotton 240 GSM

- Coverall with 2 Flap , 2 Slash . 1 Back 1 Pen pockets , Metal Zipper Metal snaps button
- 

Code : FRNavy 113



## IFR

100% Cotton 150 GSM

- Coverall with 2 Flap , 2 Slash . 1 Back 1 Pen pockets , Metal Zipper Metal snaps button

₹ 4275 +12%GST & Transport

Code : IFR Navy 114

## Industrail Uniform



100% Cotton Drill 200 GSM

Shirt :2 Flap Pcket ,1 Pen Pocket & 1 “ Reflector

Pant : 2 Spash Pocket , 1 Back Pocket, 1 “ Reflector

Code : DualOrangeNavy 115



100% Cotton Drill 200 GSM

Shirt :2 Flap Pcket ,1 Pen Pocket & 1 “ Reflector

Pant : 2 Spash Pocket , 1 Back Pocket, 1 “ Reflector

Code : Navy 116

## Industrial Uniform

100% Cotton 200 GSM , 5 Pockets \_ 1 Pen Pocket

Code : Navy 117



Phara Suits - Lint Free - Set of Full Boty + Head Cover & Booty - NO Pockets

Code : Induniform- 099



Code : Induniform- 100



Code : Induniform- 101

# Product Range

## Scrub Suits

- Anti Microbial & Anti Fungal - Bio Finish - Premium Quality
- Anti Bacterial 2 Way stretch Lycra - Premium Quality
- 4 Way Stretch Lycra - Premium Quality
- 2 Way Stretch LYCRA - Premium Quality
- 100% Pure Cotton - Premium Quality
- TT - Premium Quality

## Lab Coat / White Aprons

- Lab Coat Knee Length Full Sleeves Pure Cotton - Premium - White Color
- Apron Half Sleeves - Yogi - Standard - White / Maroon / Navy Blue / Sky blue / Coffee
- Apron Full Sleeves - Yogi - Standard

## Patient Range

- Patient Dress - Dark Blue Lining - Set of Top & Bottom
- Patient Gown - Dark - Blue Lining - Back Tie
- Patient Gown - Dark Blue Lining - Front Open
- Patient Gown - Dark Blue Lining - Bath Robe
- TKR - Set of Top Bottom - Bottom Openable from Knee
- Pediatric Patient Dress - Dark Blue Lining - 2 to 12 years

## Nursing / House Keeping / Staff - Uniform

- Nursing / House keeping & Staff - Uniforms - Set of Top & Bottom
- Top with Pattern
- Bottom

## Fabric

- Pant Pc
- Shirt PC
- Uniform Fabric - All Types

## Surgeon Gown

- Surgeon Gown - Back Tie - SGPVAL
- Surgeon Gown - Wrap Around - SGPVDF
- Impervious - Water Repellent Surgeon Gown - Back TIE - ISGPVAL
- Impervious/Water Repellent Surgeon Gown - Wrap Around - ISGPVDF

## Bed Linen - Single Bed & Bath Linen

- Bed Sheets with Pillow Cover - Plain & Stripes - Color Options
- Pediatric Bed Sheets with Pillow Cover - Cartoon / Nursery Print - Options available
- Blankets / Dohar / Chorsa
- Pediatric Blankets / Baby Blankets
- Napkin
- Bath Towels
- Pillow - Recron/ Fiber
- Pillow with raxin cover

# Product Range

## OT LINEN - Green Color - Reusable only

<ul style="list-style-type: none"> <li>• Plain Sheet - sizes in inches S/36*36 , M/36*54 , L/54*54, XL/54*80 , 2XL/54*100 , 3xl/54*120</li> <li>• Holw Sheet - sizes in inches S/36*36 , M/36*54 , L/54*54, XL/54*80 , 2XL/54*100 , 3xl/54*120</li> <li>• Draw Sheet Plain / Draw Sheet Impervious (with Plastic )</li> <li>• Procedure Apron ( Plastic Aprons )</li> <li>• Trolley Cover : S / M / L</li> <li>• Pillow with Raxin Cover</li> <li>• Crash Cart Cover</li> <li>• Mayo Trolley Cover</li> </ul>	<ul style="list-style-type: none"> <li>• Lapro Sheet : 1)General Lapro with Pockets 2) Gynac Lapro Sheet 3) Leg U Drapes 4) Leg of Drapes</li> <li>• Covers - 1) C Arm / IITV Cover 2) CVP Cover 3) Coutry Pencil cover</li> <li>• Leggins</li> <li>• OT Table Sheet</li> <li>• Screen Curtain</li> </ul>
---------------------------------------------------------------------------------------------------------------------------------------------------------------------------------------------------------------------------------------------------------------------------------------------------------------------------------------------------------------------------------------------------------------------------------------------------------------------------------------------------------------	-------------------------------------------------------------------------------------------------------------------------------------------------------------------------------------------------------------------------------------------------------------------------------------------------------------------------------

## Hotel - Uniforms

<ul style="list-style-type: none"> <li>• Chef Coat</li> <li>• Waiter /Attendant Uniforms</li> <li>• Table Cloth &amp; Table Cover</li> <li>• Napkin</li> <li>• Bath Towel</li> <li>• Bed Sheets with Pillow Cover</li> <li>• Blankets</li> </ul>
--------------------------------------------------------------------------------------------------------------------------------------------------------------------------------------------------------------------------------------------------

## Industrial Uniforms

<ul style="list-style-type: none"> <li>• Cover All / Jump Suits / Boiler Suits</li> <li>• Safety Jackets</li> <li>• FR Cover All</li> <li>• Safety Shoes</li> <li>• Safety equipments</li> </ul>
--------------------------------------------------------------------------------------------------------------------------------------------------------------------------------------------------

## Pharma Uniforms

<ul style="list-style-type: none"> <li>• Cover All / Jump Suits / Boiler Suits - Lint Free</li> <li>• Lab Coats - Lint Free</li> <li>• Fabric based uniforms</li> </ul>
-------------------------------------------------------------------------------------------------------------------------------------------------------------------------

## T Shirts

<ul style="list-style-type: none"> <li>• Matty Collar</li> <li>• Polo Collar</li> <li>• Round Neck</li> </ul>
---------------------------------------------------------------------------------------------------------------

**P N A K**<sup>TM</sup>  
THE DRESS CODE

**P A N I A A K H E R E G A L I A I N D I A L L P**

A/326/328 /314 lialamni Trade Center, Delhi Darwaja , Ahmedabad Gujart India 380004  
pnakindia@gmail.com// www.pnakindia.in