



中国认可  
国际互认  
检测  
TESTING  
CNAS L13753

Report No. S03A21080487L00201

**TEST REPORT  
IEC 62133-2**

**Secondary cells and batteries containing alkaline or other non-acid electrolytes – Safety requirements for portable sealed secondary cells, and for batteries made from them, for use in portable applications – Part 2: Lithium systems**

Report Number.....: S03A21080487L00201

Date of issue.....: Sep. 14, 2021

Total number of pages.....: 25

Tested by (name + signature).....: JOJO Tan

*JOJO.Tan*

Reviewed by (name + signature).....: Jess Yang

*Jess Yang*

Approved by (name + signature).....: Rod Lu

*Rod Lu*



Testing Laboratory Name .....: Guangdong ESTL Technology Co., Ltd.

Address .....: Room 101, 201-208, Unit 1, Building 1, No. 9 Headquarters 2nd Road, Songshan Lake Park, Dongguan, Guangdong, China.

Applicant's name.....: SHENZHEN GENJU TECHNOLOGY CO., LTD

Address.....: Room 208, Building B, NO.7 East, Shangxue industrial park, Bantian Buji, longgang district, shenzhen, China

**Test specification:**

Standard.....:  IEC 62133-2:2017  EN 62133-2:2017

Test item description.....: Li-ion Cell

Trade Mark.....: N/A

Manufacturer.....: SHENZHEN GENJU TECHNOLOGY CO., LTD

Address.....: Room 208, Building B, NO.7 East, Shangxue industrial park, Bantian Buji, longgang district, shenzhen, China

Factory.....: SHENZHEN GENJU TECHNOLOGY CO., LTD

Address.....: Room 208, Building B, NO.7 East, Shangxue industrial park, Bantian Buji, longgang district, shenzhen, China

Model/Type reference.....: SAFD18650 35ME

Ratings.....: 3.6V, 3400mAh, 12.24Wh



**List of Attachments (including a total number of pages in each attachment): N/A**

**Summary of testing:**

The unit is charging the empty cell and discharging the full charged cell according to the rating.

Note:

Charging procedures for test purposes:

- (1) Unless otherwise stated, the charging procedure for test purposes is carried out in an ambient temperature of  $20\pm 5^{\circ}\text{C}$ , using the method declared by the manufacturer. Prior to charging, the battery/cell shall have been discharged at  $20\pm 5^{\circ}\text{C}$  at a constant current of 0.2 It A down to a specified final voltage.
- (2) After stabilization for 1 and 4 hours respectively at ambient temperature of highest test temperature  $45^{\circ}\text{C}$  and lowest test temperature  $0^{\circ}\text{C}$ .

**Tests performed (name of test and test clause):**

- cl.5.6.2 Design recommendation;
- cl.7.1 Charging procedure for test purposes (for Cells);
- cl.7.2.1 Continuous charging at constant voltage (cells);
- cl.7.3.1 External short circuit (cell);
- cl.7.3.3 Free fall (cell);
- cl.7.3.4 Thermal abuse (cells);
- cl.7.3.5 Crush (cells);
- cl.7.3.7 Forced discharge (cells);
- cl.7.3.9 Design evaluation – Forced internal short circuit (cells)

Tests are made with the number of cells specified in IEC 62133-2: 2017 Table 1.

**Testing location:**

Guangdong ESTL Technology Co., Ltd.  
Room 101, 201-208, Unit 1, Building 1, No. 9  
Headquarters 2nd Road, Songshan Lake Park,  
Dongguan, Guangdong, China.

**Summary of compliance with National Differences (List of countries addressed):N/A**

The product fulfils the requirements of EN62133-2: 2017



**Copy of marking plate:**

**The artwork below may be only a draft. The use of certification marks on a product must be authorized by the respective NCBs that own these marks.**

+ SAFD18650 35ME ICR19/66  
3.6V 3400mAh 12.24Wh  
Li-ion Cell  
- YYMMDD  
SHENZHEN GENJU TECHNOLOGY CO., LTD

Remark: 1. "YY" means to years; "MM" means to months; "DD" means to days.

The "+" represents the anode; The "-" represents the cathode.



<b>Test item particulars.....</b>	: N/A
<b>Classification of installation and use.....</b>	: To be defined in final product
<b>Supply connection.....</b>	: DC Terminal
<b>Recommend charging method declared by the manufacturer.....</b>	: CC/CV
<b>Discharge current (0,2 I<sub>t</sub> A).....</b>	: 680mA
<b>Maximum discharging current.....</b>	: 10000mA
<b>Specified final voltage.....</b>	: 2.5V
<b>Recommend of charging limit for lithium system</b>	
<b>Upper limit charging voltage per cell.....</b>	: 4.2V
<b>Maximum charging current.....</b>	: 3400mA
<b>Charging temperature upper limit.....</b>	: 45°C
<b>Charging temperature lower limit.....</b>	: 0°C
<b>Polymer cell electrolyte type.....</b>	: <input type="checkbox"/> gel polymer..... <input type="checkbox"/> solid polymer <input checked="" type="checkbox"/> N/A
<b>Possible test case verdicts:</b>	
- test case does not apply to the test object..... : N/A (Not Applicable)	
- test object does meet the requirement..... : P (Pass)	
- test object does not meet the requirement..... : F (Fail)	
<b>Testing.....</b>	
<b>Date of receipt of test item.....</b>	: Aug.30, 2021
<b>Date (s) of performance of tests.....</b>	: Sep. 1, 2021 to Sep 13, 2021
<b>General remarks:</b>	
The test results presented in this report relate only to the object tested. This report shall not be reproduced, except in full, without the written approval of the Issuing testing laboratory. "(See Enclosure #)" refers to additional information appended to the report. "(See appended table)" refers to a table appended to the report.	
<b>Throughout this report a <input type="checkbox"/> comma / <input checked="" type="checkbox"/> point is used as the decimal separator.</b>	



**General product information and other remarks:**

The main features of the Cell are shown as below :

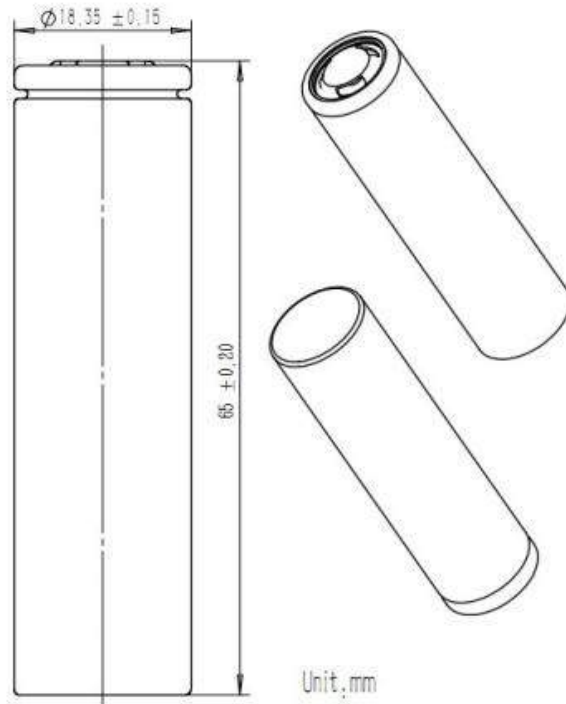
Model	Nominal capacity	Nominal voltage	Nominal Charge Current	Nominal Discharge Current	Maximum Charge Current	Maximum Discharge Current	Limited Charge Voltage	Cut-off Voltage
SAFD18650 35ME	3400mAh	3.6V	680mA	3400mA	680mA	10000mA	4.2V	2.5V

The main features of the Cell are shown as below :

Model	Upper limit charge voltage	Taper-off current	Lower charge temperature	Upper charge temperature
SAFD18650 35ME	4.2V	68mA	0°C	45°C

Construction:

Cell:



Max. 18.5mm (  $\phi$  ) x Max.65.2 mm (H)



IEC 62133-2			
Clause	Requirement + Test	Result - Remark	Verdict
<b>4</b>	<b>PARAMETER MEASUREMENT TOLERANCES</b>		P
	Parameter measurement tolerances		P
<b>5</b>	<b>GENERAL SAFETY CONSIDERATIONS</b>		P
<b>5.1</b>	<b>General</b>		P
	Cells and batteries so designed and constructed that they are safe under conditions of both intended use and reasonably foreseeable misuse		P
<b>5.2</b>	<b>Insulation and wiring</b>		N/A
	The insulation resistance between the positive terminal and externally exposed metal surfaces of the battery (excluding electrical contact surfaces) is not less than 5 MΩ	No metal surface exists.	N/A
	Insulation resistance (MΩ)..... :		—
	Internal wiring and insulation are sufficient to withstand maximum anticipated current, voltage and temperature requirements		N/A
	Orientation of wiring maintains adequate clearance and creepage distances between conductors		N/A
	Mechanical integrity of internal connections accommodates reasonably foreseeable misuse		N/A
<b>5.3</b>	<b>Venting</b>		P
	Battery cases and cells incorporate a pressure relief mechanism or are constructed so that they relieve excessive internal pressure at a value and rate that will preclude rupture, explosion and self-ignition	Top side of the cylindrical cell	P
	Encapsulation used to support cells within an outer casing does not cause the battery to overheat during normal operation nor inhibit pressure relief		N/A
<b>5.4</b>	<b>Temperature, voltage and current management</b>	Cell only	N/A
	Batteries are designed such that abnormal temperature rise conditions are prevented		N/A
	Batteries are designed to be within temperature, voltage and current limits specified by the cell manufacturer		N/A
	Batteries are provided with specifications and charging instructions for equipment manufacturers so that specified chargers are designed to maintain charging within the temperature, voltage and current limits specified		N/A



IEC 62133-2			
Clause	Requirement + Test	Result - Remark	Verdict
<b>5.5</b>	<b>Terminal contacts</b>		P
	The size and shape of the terminal contacts ensure that they can carry the maximum anticipated current		P
	External terminal contact surfaces are formed from conductive materials with good mechanical strength and corrosion resistance		P
	Terminal contacts are arranged to minimize the risk of short-circuit		P
<b>5.6</b>	<b>Assembly of cells into batteries</b>	Cell only	N/A
5.6.1	General		N/A
	Each battery have an independent control and protection for current, voltage, temperature and any other parameter required for safety and to maintain the cells within their operating region		N/A
	This protection may be provided external to the battery such as within the charger or the end devices		N/A
	If protection is external to the battery, the manufacturer of the battery provide this safety relevant information to the external device manufacturer for implementation		N/A
	If there is more than one battery housed in a single battery case, each battery have protective circuitry that can maintain the cells within their operating regions		N/A
	Manufacturers of cells specify current, voltage and temperature limits so that the battery manufacturer/designer may ensure proper design and assembly		N/A
	Batteries that are designed for the selective discharge of a portion of their series connected cells incorporate circuitry to prevent operation of cells outside the limits specified by the cell manufacturer		N/A
	Protective circuit components added as appropriate and consideration given to the end-device application		N/A
	The manufacturer of the battery provide a safety analysis of the battery safety circuitry with a test report including a fault analysis of the protection circuit under both charging and discharging conditions confirming the compliance		N/A
5.6.2	Design recommendation		N/A





IEC 62133-2			
Clause	Requirement + Test	Result - Remark	Verdict
	For the battery consisting of a single cell or a single cellblock, it is recommended that the charging voltage of the cell does not exceed the upper limit of the charging voltage specified in Table 2		N/A
	For the battery consisting of series-connected plural single cells or series-connected plural cellblocks, it is recommended that the voltages of any one of the single cells or single cellblocks does not exceed the upper limit of the charging voltage, specified in Table 2, by monitoring the voltage of every single cell or the single cellblocks		N/A
	For the battery consisting of series-connected plural single cells or series-connected plural cellblocks, it is recommended that charging is stopped when the upper limit of the charging voltage is exceeded for any one of the single cells or single cellblocks by measuring the voltage of every single cell or the single cellblocks		N/A
	For batteries consisting of series-connected cells or cell blocks, nominal charge voltage not be counted as an overcharge protection		N/A
	For batteries consisting of series-connected cells or cell blocks, cells have closely matched capacities, be of the same design, be of the same chemistry and be from the same manufacturer		N/A
	It is recommended that the cells and cell blocks not discharged beyond the cell manufacturer's specified final voltage		N/A
	For batteries consisting of series-connected cells or cell blocks, cell balancing circuitry incorporated into the battery management system		N/A
5.6.3	Mechanical protection for cells and components of batteries		N/A
	Mechanical protection for cells, cell connections and control circuits within the battery provided to prevent damage as a result of intended use and reasonably foreseeable misuse		N/A
	The mechanical protection can be provided by the battery case or it can be provided by the end product enclosure for those batteries intended for building into an end product		N/A
	The battery case and compartments housing cells designed to accommodate cell dimensional tolerances during charging and discharging as recommended by the cell manufacturer		N/A



IEC 62133-2			
Clause	Requirement + Test	Result - Remark	Verdict
	For batteries intended for building into a portable end product, testing with the battery installed within the end product considered when conducting mechanical tests		N/A
<b>5.7</b>	<b>Quality plan</b>		P
	The manufacturer prepares and implements a quality plan that defines procedures for the inspection of materials, components, cells and batteries and which covers the whole process of producing each type of cell or battery	Complied. Quality plan provided	P
<b>5.8</b>	<b>Battery safety components</b>		N/A
	According annex F		N/A

<b>6</b>	<b>TYPE TEST AND SAMPLE SIZE</b>		P
	Tests are made with the number of cells or batteries specified in Table 1 using cells or batteries that are not more than six months old		P
	Coin cells with resistance $\leq 3 \Omega$ (measured according annex D) are tested according table 1	Not coin cells	N/A
	Unless otherwise specified, tests are carried out in an ambient temperature of $20 \text{ }^\circ\text{C} \pm 5 \text{ }^\circ\text{C}$		P
	The safety analysis of 5.6.1 identify those components of the protection circuit that are critical for short-circuit, overcharge and overdischarge protection		N/A
	When conducting the short-circuit test, consideration given to the simulation of any single fault condition that is likely to occur in the protecting circuit that would affect the short-circuit test		N/A

<b>7</b>	<b>SPECIFIC REQUIREMENTS AND TESTS</b>		P
<b>7.1</b>	<b>Charging procedure for test purposes</b>		P
7.1.1	First procedure		P
	This charging procedure applies to subclauses other than those specified in 7.1.2		P
	Unless otherwise stated in this document, the charging procedure for test purposes is carried out in an ambient temperature of $20 \text{ }^\circ\text{C} \pm 5 \text{ }^\circ\text{C}$ , using the method declared by the manufacturer	See page 5.	P
	Prior to charging, the battery have been discharged at $20 \text{ }^\circ\text{C} \pm 5 \text{ }^\circ\text{C}$ at a constant current of 0,2 It A down to a specified final voltage	See page 5.	P



IEC 62133-2			
Clause	Requirement + Test	Result - Remark	Verdict
7.1.2	Second procedure		P
	This charging procedure applies only to 7.3.1, 7.3.4, 7.3.5, and 7.3.9		P
	After stabilization for 1 h and 4 h, respectively, at ambient temperature of highest test temperature and lowest test temperature, as specified in Table 2, cells are charged by using the upper limit charging voltage and maximum charging current, until the charging current is reduced to 0,05 It A, using a constant voltage charging method	Charge temperature specified by manufacturer: 0-45°C.	P
<b>7.2</b>	<b>Intended use</b>		P
7.2.1	Continuous charging at constant voltage (cells)		P
	Fully charged cells are subjected for 7 days to a charge using the charging method for current and standard voltage specified by the cell manufacturer	Charging for 7days with 680mA.	P
	Results: No fire. No explosion. No leakage..... :	(See appended table 7.2.1)	P
7.2.2	Case stress at high ambient temperature (battery)		N/A
	Oven temperature (°C)..... :		—
	Results: No physical distortion of the battery case resulting in exposure of internal protective components and cells		N/A
<b>7.3</b>	<b>Reasonably foreseeable misuse</b>		P
7.3.1	External short-circuit (cell)	Tested complied.	P
	The cells were tested until one of the following occurred:		P
	- 24 hours elapsed; or		N/A
	- The case temperature declined by 20 % of the maximum temperature rise		P
	Results: No fire. No explosion..... :	(See appended table 7.3.1)	P
7.3.2	External short-circuit (battery)	Cell only.	N/A
	The batteries were tested until one of the following occurred:		N/A
	- 24 hours elapsed; or		N/A
	- The case temperature declined by 20 % of the maximum temperature rise		N/A
	In case of rapid decline in short circuit current, the battery pack remained on test for an additional one hour after the current reached a low end steady state condition		N/A



IEC 62133-2			
Clause	Requirement + Test	Result - Remark	Verdict
	A single fault in the discharge protection circuit conducted on one to four (depending upon the protection circuit) of the five samples before conducting the short-circuit test		N/A
	A single fault applies to protective component parts such as MOSFET, fuse, thermostat or positive temperature coefficient (PTC) thermistor		N/A
	Results: No fire. No explosion..... :		N/A
7.3.3	Free fall	Tested complied.	P
	Results: No fire. No explosion	No fire. No explosion	P
7.3.4	Thermal abuse (cells)	Tested complied.	P
	Oven temperature (°C)..... :	130°C±2°C	—
	Results: No fire. No explosion	No fire. No explosion	P
7.3.5	Crush (cells)	Tested complied.	P
	The crushing force was released upon:		P
	- The maximum force of 13 kN ± 0,78 kN has been applied; or		P
	- An abrupt voltage drop of one-third of the original voltage has been obtained		N/A
	Results: No fire. No explosion..... :		N/A
7.3.6	Over-charging of battery	Cell only.	N/A
	The supply voltage which is:		N/A
	- 1,4 times the upper limit charging voltage presented in Table A.1 (but not to exceed 6,0 V) for single cell/cell block batteries or		N/A
	- 1,2 times the upper limit charging voltage presented in Table A.1 per cell for series connected multi-cell batteries, and		N/A
	- Sufficient to maintain a current of 2,0 It A throughout the duration of the test or until the supply voltage is reached		N/A
	Test was continued until the temperature of the outer casing:		N/A
	- Reached steady state conditions (less than 10 °C change in 30-minute period); or		N/A
	- Returned to ambient		N/A
	Results: No fire. No explosion..... :		N/A
7.3.7	Forced discharge (cells)	Tested complied.	P



IEC 62133-2			
Clause	Requirement + Test	Result - Remark	Verdict
	If the discharge voltage reaches the negative value of upper limit charging voltage within the testing duration, the voltage is maintained at the negative value of the upper limit charging voltage by reducing the current for the remainder of the testing duration		N/A
	If the discharge voltage does not reach the negative value of upper limit charging voltage within the testing duration, the test is terminated at the end of the testing duration		P
	Results: No fire. No explosion..... :	(See appended table 7.3.7)	P
7.3.8	Mechanical tests (batteries)	Cell only.	N/A
7.3.8.1	Vibration		N/A
	Results: No fire, no explosion, no rupture, no leakage or venting..... :		N/A
7.3.8.2	Mechanical shock		N/A
	Results: No leakage, no venting, no rupture, no explosion and no fire..... :		N/A
7.3.9	Design evaluation – Forced internal short-circuit (cells)		P
	The cells complied with national requirement for..... :	France, Japan, Republic of Korea, Switzerland	—
	The pressing was stopped upon:		P
	- A voltage drop of 50mV has been detected; or		N/A
	- The pressing force of 800 N (cylindrical cells) or 400 N (prismatic cells) has been reached	800N for cylindrical cell.	P
	Results: No fire..... :	(See appended table 7.3.9)	P

<b>8</b>	<b>INFORMATION FOR SAFETY</b>		P
<b>8.1</b>	<b>General</b>		P
	Manufacturers of secondary cells ensure that information is provided about current, voltage and temperature limits of their products	Information for safety mentioned in manufacturer's specifications.	P
	Manufacturers of batteries ensure that equipment manufacturers and, in the case of direct sales, end-users are provided with information to minimize and mitigate hazards	Information for safety mentioned in manufacturer's specifications.	P
	Systems analyses performed by device manufacturers to ensure that a particular battery design prevents hazards from occurring during use of a product		N/A



IEC 62133-2			
Clause	Requirement + Test	Result - Remark	Verdict
	As appropriate, any information relating to hazard avoidance resulting from a system analysis provided to the end user		N/A
	Do not allow children to replace batteries without adult supervision		P
<b>8.2</b>	<b>Small cell and battery safety information</b>	Not small cell	N/A
	The following warning language is to be provided with the information packaged with the small cells and batteries or equipment using them:		N/A
	- Keep small cells and batteries which are considered swallowable out of the reach of children		N/A
	- Swallowing may lead to burns, perforation of soft tissue, and death. Severe burns can occur within 2 h of ingestion		N/A
	- In case of ingestion of a cell or battery, seek medical assistance promptly		N/A
<b>9</b>	<b>MARKING</b>		P
<b>9.1</b>	<b>Cell marking</b>		P
	Cells marked as specified in IEC 61960, except coin cells		P
	Coin cells whose external surface area is too small to accommodate the markings on the cells show the designation and polarity		N/A
	By agreement between the cell manufacturer and the battery and/or end product manufacturer, component cells used in the manufacture of a battery need not be marked		N/A
<b>9.2</b>	<b>Battery marking</b>	Cell only.	N/A
	Batteries marked as specified in IEC 61960, except for coin batteries		N/A
	Coin batteries whose external surface area is too small to accommodate the markings on the batteries show the designation and polarity. Batteries also marked with an appropriate caution statement		N/A
	Terminals have clear polarity marking on the external surface of the battery		N/A



IEC 62133-2			
Clause	Requirement + Test	Result - Remark	Verdict
	Batteries with keyed external connectors designed for connection to specific end products need not be marked with polarity markings if the design of the external connector prevents reverse polarity connections		N/A
<b>9.3</b>	<b>Caution for ingestion of small cells and batteries</b>	Not small cell	N/A
	Coin cells and batteries identified as small batteries according to 8.2 include a caution statement regarding the hazards of ingestion in accordance with 8.2		N/A
	When small cells and batteries are intended for direct sale in consumer-replaceable applications, caution for ingestion given on the immediate package		N/A
<b>9.4</b>	<b>Other information</b>		P
	Storage and disposal instructions	Information for storage and disposal instructions mentioned in manufacturer's specifications.	P
	Recommended charging instructions	Information for recommended charging instructions mentioned in manufacturer's specifications.	P

<b>10</b>	<b>PACKAGING AND TRANSPORT</b>		P
	Packaging for coin cells not small enough to fit within the limits of the ingestion gauge of Figure 3	Not coin cells.	N/A
	The materials and packaging design are chosen so as to prevent the development of unintentional electrical conduction, corrosion of the terminals and ingress of environmental contaminants		P

<b>ANNEX A</b>	<b>CHARGING AND DISCHARGING RANGE OF SECONDARY LITHIUM ION CELLS FOR SAFE USE</b>		P
<b>A.1</b>	<b>General</b>		P
<b>A.2</b>	<b>Safety of lithium ion secondary battery</b>	Complied.	P
<b>A.3</b>	<b>Consideration on charging voltage</b>	Complied.	P
A.3.1	General		P
A.3.2	Upper limit charging voltage	4.20V.	P
A.3.2.1	General		P
A.3.2.2	Explanation of safety viewpoint		N/A



IEC 62133-2			
Clause	Requirement + Test	Result - Remark	Verdict
A.3.2.3	Safety requirements, when different upper limit charging voltage is applied		N/A
<b>A.4</b>	<b>Consideration of temperature and charging current</b>		P
A.4.1	General		P
A.4.2	Recommended temperature range	See A.4.2.2.	P
A.4.2.1	General		P
A.4.2.2	Safety consideration when a different recommended temperature range is applied	Charging temperature declared by client is: 0-45°C	P
A.4.3	High temperature range		N/A
A.4.3.1	General		N/A
A.4.3.2	Explanation of safety viewpoint		N/A
A.4.3.3	Safety considerations when specifying charging conditions in the high temperature range		N/A
A.4.3.4	Safety considerations when specifying a new upper limit in the high temperature range		N/A
A.4.4	Low temperature range	Charging low temperature declared by client is: 0°C.	P
A.4.4.1	General		P
A.4.4.2	Explanation of safety viewpoint		P
A.4.4.3	Safety considerations, when specifying charging conditions in the low temperature range		N/A
A.4.4.4	Safety considerations when specifying a new lower limit in the low temperature range		N/A
A.4.5	Scope of the application of charging current		P
A.4.6	Consideration of discharge		P
A.4.6.1	General		P
A.4.6.2	Final discharge voltage and explanation of safety viewpoint	Cell specified final voltage 2.5V, not exceed 2.5V specified by cell manufacturer.	P
A.4.6.3	Discharge current and temperature range		P
A.4.6.4	Scope of application of the discharging current		P
<b>A.5</b>	<b>Sample preparation</b>		P
A.5.1	General		P
A.5.2	Insertion procedure for nickel particle to generate internal short		P
A.5.3	Disassembly of charged cell		P





IEC 62133-2			
Clause	Requirement + Test	Result - Remark	Verdict
A.5.4	Shape of nickel particle		P
A.5.5	Insertion of nickel particle in cylindrical cell		P
A.5.5.1	Insertion of nickel particle in winding core		P
A.5.5.2	Marking the position of the nickel particle on both ends of the winding core of the separator		P
A.5.6	Insertion of nickel particle in prismatic cell	Cylindrical cell	N/A
<b>A.6</b>	<b>Experimental procedure of the forced internal short-circuit test</b>		P
A.6.1	Material and tools for preparation of nickel particle		P
A.6.2	Example of a nickel particle preparation procedure		P
A.6.3	Positioning (or placement) of a nickel particle		P
A.6.4	Damaged separator precaution		P
A.6.5	Caution for rewinding separator and electrode		P
A.6.6	Insulation film for preventing short-circuit		P
A.6.7	Caution when disassembling a cell		P
A.6.8	Protective equipment for safety		P
A.6.9	Caution in the case of fire during disassembling		P
A.6.10	Caution for the disassembling process and pressing the electrode core		P
A.6.11	Recommended specifications for the pressing device		P
<b>ANNEX B</b>	<b>RECOMMENDATIONS TO EQUIPMENT MANUFACTURERS AND BATTERY ASSEMBLERS</b>		N/A
<b>ANNEX C</b>	<b>RECOMMENDATIONS TO THE END-USERS</b>		N/A
<b>ANNEX D</b>	<b>MEASUREMENT OF THE INTERNAL AC RESISTANCE FOR COIN CELLS</b>		N/A
<b>D.1</b>	<b>General</b>	Not coin cells.	N/A
<b>D.2</b>	<b>Method</b>		N/A
	A sample size of three coin cells is required for this measurement.....:	(See appended table D.2)	N/A
	Coin cells with an internal resistance of less than or equal to 3 Ω are subjected to the testing according to Clause 6 and Table 1		N/A
	Coin cells with an internal resistance greater than 3 Ω require no further testing		N/A



Report No. S03A21080487L00201

IEC 62133-2			
Clause	Requirement + Test	Result - Remark	Verdict
<b>ANNEX E</b>	<b>PACKAGING AND TRANSPORT</b>		<b>P</b>
<b>ANNEX F</b>	<b>COMPONENT STANDARDS REFERENCES</b>		<b>N/A</b>



IEC 62133-2			
Clause	Requirement + Test	Result - Remark	Verdict

TABLE: Critical components information					P
Object/part no.	Manufacturer/ trademark	Type/model	Technical data	Standard	Mark(s) of conformity <sup>1</sup>
Cell	SHENZHEN GENJU TECHNOLOGY CO., LTD.	SAFD18650 35ME	3.6V, 3400mAh	IEC62133-2:2017	Tested with appliance
-Positive Electrode	Dangsheng	LCO-12B	LiC <sub>o</sub> O <sub>2</sub> , Carbon, black, NMP, PVDF, Conductive additive	--	Tested with appliance
-Negative Electrode	Sinuo	MAG-4	Graphite, CMC, SBR, Distilled Water, Conductive additive	--	Tested with appliance
-Separator	Dongguan Shanshan Technical Jonit-stock Co., Ltd.	LD-1129	LiPF <sub>6</sub> +DMC+EMC+E C	--	Tested with appliance
-Electrolyte	Fushan Jinhui Hi-tech	Jh20	PE, Shut down temperature: 130°C	--	Tested with appliance

**Supplementary information:**

<sup>1)</sup> Provided evidence ensures the agreed level of compliance. See OD-2039.



IEC 62133-2					
Clause	Requirement + Test			Result - Remark	Verdict
<b>7.2.1</b>	<b>TABLE: Continuous charging at constant voltage (cells)</b>				<b>P</b>
Sample no.	Recommended charging voltage Vc (Vdc)	Recommended charging current I <sub>rec</sub> (A)	OCV before test (Vdc)	Results	
C1#	4.2	0.68	4.178	P	
C2#	4.2	0.68	4.175	P	
C3#	4.2	0.68	4.176	P	
C4#	4.2	0.68	4.178	P	
C5#	4.2	0.68	4.175	P	
<b>Supplementary information:</b>					
- No fire or explosion					
- No leakage					

<b>7.3.1</b>	<b>TABLE: External short-circuit (cell)</b>					<b>P</b>
Sample no.	Ambient T (°C)	OCV before test (Vdc)	Resistance of circuit (mΩ)	Maximum case temperature rise ΔT, (K)	Results	
<b>Samples charged at charging temperature upper limit (45°C)</b>						
C6#	56.5	4.173	87	51.0	P	
C7#	56.5	4.176	91	49.1	P	
C8#	56.5	4.175	86	61.3	P	
C9#	56.5	4.173	90	61.0	P	
C10#	56.6	4.174	83	54.2	P	
<b>Samples charged at charging temperature lower limit (0°C)</b>						
C11#	56.5	4.112	84	62.4	P	
C12#	56.4	4.118	86	58.9	P	
C13#	56.3	4.124	93	61.7	P	
C14#	56.5	4.115	88	59.5	P	
C15#	56.4	4.121	85	60.2	P	
<b>Supplementary information:</b>						
- No fire or explosion						



IEC 62133-2			
Clause	Requirement + Test	Result - Remark	Verdict

<b>7.3.2</b>	<b>TABLE: External short-circuit (battery)</b>					<b>N/A</b>
Sample no.	Ambient T (°C)	OCV before test (Vdc)	Resistance of circuit (mΩ)	Maximum case temperature rise ΔT (K)	Component single fault condition	Results
<b>Supplementary information:</b>						
- No fire or explosion						

<b>7.3.5</b>	<b>TABLE: Crush (cells)</b>				<b>P</b>
Sample no.	OCV before test (Vdc)	OCV at removal of crushing force (Vdc)	Maximum force applied to the cell during crush (kN)		Results
<b>Samples charged at charging temperature upper limit (45°C)</b>					
C29#	4.174	--	12.9		P
C30#	4.175	--	12.9		P
C31#	4.172	--	13.1		P
C32#	4.174	--	13.0		P
C33#	4.173	--	12.9		P
<b>Samples charged at charging temperature lower limit (0°C)</b>					
C34#	4.120	--	12.9		P
C35#	4.111	--	13.0		P
C36#	4.117	--	13.0		P
C37#	4.125	--	12.9		P
C38#	4.116	--	13.0		P
<b>Supplementary information:</b>					
- No fire or explosion					



IEC 62133-2				
Clause	Requirement + Test	Result - Remark		Verdict
<b>7.3.6</b>	<b>TABLE: Over-charging of battery</b>			<b>N/A</b>
<b>Constant charging current (A) :</b>				—
<b>Supply voltage (Vdc) :</b>				—
Sample no.	OCV before charging (Vdc)	Total charging time (minute)	Maximum outer case temperature (°C)	Results
<b>Supplementary information:</b> - No fire or explosion				

<b>7.3.7</b>	<b>TABLE: Forced discharge (cells)</b>				<b>P</b>
Sample no.	OCV before application of reverse charge (Vdc)	Measured reverse charge $I_t$ (A)	Lower limit discharge voltage (Vdc)	Results	
C39#	2.879	3.4	-1.687	P	
C40#	2.916	3.4	-1.923	P	
C41#	2.925	3.4	-1.875	P	
C42#	2.894	3.4	-1.964	P	
C43#	2.907	3.4	-1.958	P	
<b>Supplementary information:</b> - No fire or explosion					

<b>7.3.8.1</b>	<b>TABLE: Vibration</b>					<b>N/A</b>
Sample no.	OCV before test (Vdc)	OCV after test (Vdc)	Mass before test (g)	Mass after test (g)	Results	



IEC 62133-2			
Clause	Requirement + Test	Result - Remark	Verdict

**Supplementary information:**

- No fire or explosion
- No rupture
- No leakage
- No venting

<b>7.3.8.2</b>	<b>TABLE: Mechanical shock</b>				<b>N/A</b>
Sample no.	OCV before test (Vdc)	OCV after test (Vdc)	Mass before test (g)	Mass after test (g)	Results

**Supplementary information:**

- No fire or explosion
- No rupture
- No leakage
- No venting

<b>7.3.9</b>	<b>TABLE: Forced internal short circuit (cells)</b>				<b>P</b>
Sample no.	Chamber ambient T (°C)	OCV before test (Vdc)	Particle location <sup>1)</sup>	Maximum applied pressure (N)	Results
<b>Samples charged at charging temperature upper limit (45°C)</b>					
C44#	45	4.126	1	800	P
C45#	45	4.145	1	800	P
C46#	45	4.141	1	800	P
C47#	45	4.137	1	800	P
C48#	45	4.128	1	800	P
<b>Samples charged at charging temperature lower limit (0°C)</b>					
C49#	0	4.065	1	800	P
C50#	0	4.073	1	800	P
C51#	0	4.069	1	800	P
C52#	0	4.081	1	800	P
C53#	0	4.076	1	800	P



IEC 62133-2			
Clause	Requirement + Test	Result - Remark	Verdict

**Supplementary information:**

<sup>1)</sup> Identify one of the following:

- 1: Nickel particle inserted between positive and negative (active material) coated area.
- 2: Nickel particle inserted between positive aluminium foil and negative active material coated area.
- No fire

<b>D.2</b>	<b>TABLE: Internal AC resistance for coin cells</b>			<b>N/A</b>
Sample no.	Ambient T (°C)	Store time (h)	Resistance Rac (Ω)	Results <sup>1)</sup>

**Supplementary information:**

<sup>1)</sup> Coin cells with internal resistance less than or equal to 3 Ω, see test result on corresponding tables



### Photos



Fig. 1

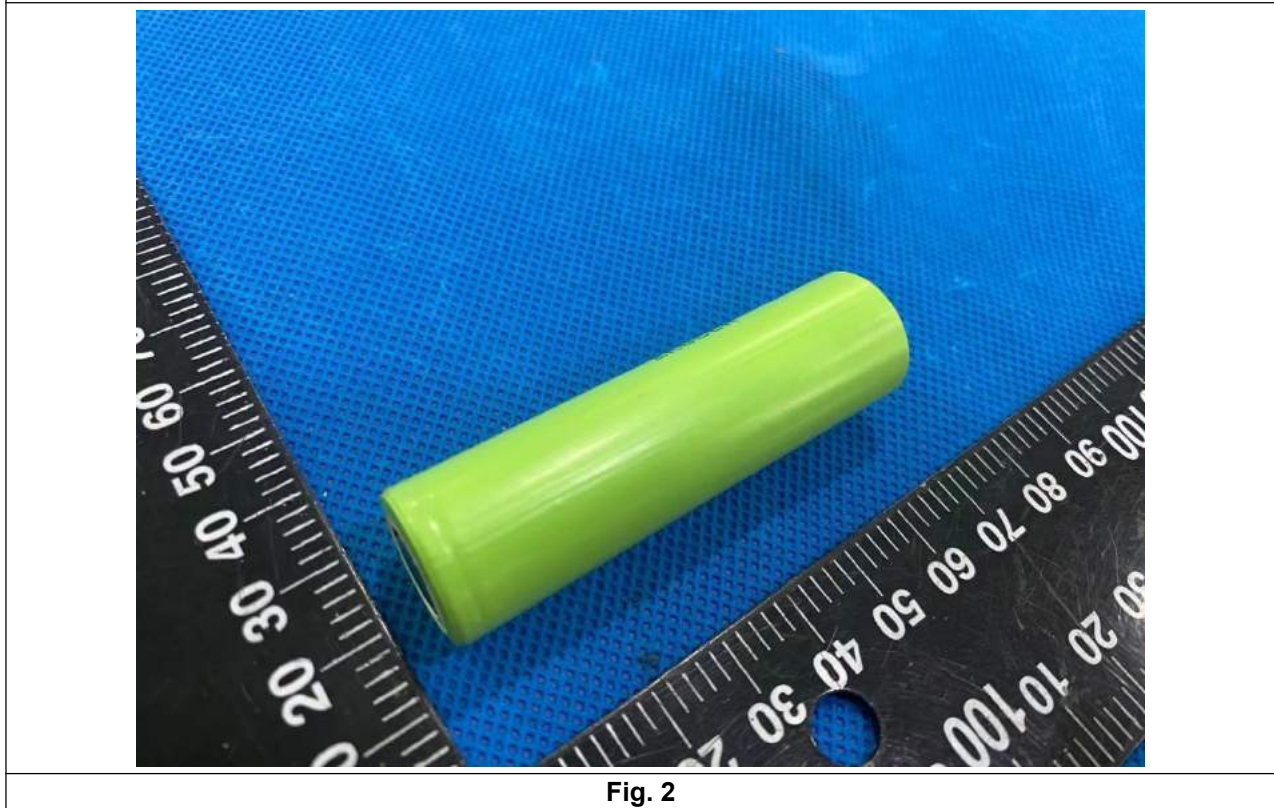


Fig. 2

--- End of Report ---