

PRODUCTION PROCESS FACTORY REPORT
REF 016/JKT/I/2021

PT. GALAXI SEMESTA JAYA



SURVEY BY :

PT. BECKJORINDO PARYAWEKSANA



AISI

Association of Indonesian Independent Surveyors
Asosiasi Independent Surveyor Indonesia

Accreditation and Certification



KAN

National Accreditation Body
Komite Akreditasi Nasional



ISO 9001

Quality Management System
System Manajemen Mutu



PRODUCTION PROCESS FACTORY REPORT

CLIENT COMPANY	: PT GALAXI SEMESTA JAYA
NOMOR INDUK BERUSAHA	: 0279001910684
NPWP COMPANY	: 95.873.817.1-031.000
HEAD OFFICE ADDRESS	: GEDUNG GRAND SLIPI TOWER LT.9 UNIT 0, CHR OFFICE, JI. LETJEND. S. PARMAN, KAV 22-24, KELURAHAN. PALMERAH, KECAMATAN. PAL MERAH KOTA ADM. JAKARTA BARAT, PROV DKI JAKARTA
FACTORY ADDRESS	: JL. RAYA KARANGJATI – PRINGAPUS KM.3 NO.1 RT 05 RW 03 DESA BODEAN, KELURAHAN KLEPU KECAMATAN UNGARAN KABUPATEN PRINGAPUS 50553 -PROV JAWA TENGAH
WAREHOUSE	: JL RAYA GUBERNUR SWAKA NO. 55 RT 001 RW 002 DESA SAMBONG KELURAHAN MANGKUBUMI KECAMATAN MANGKUBUMI TASIKMALAYA, PROV. JAWA BARAT
DATE OF INSPECTION	: FEBRUARY 26 & MARCH 02 , 2021

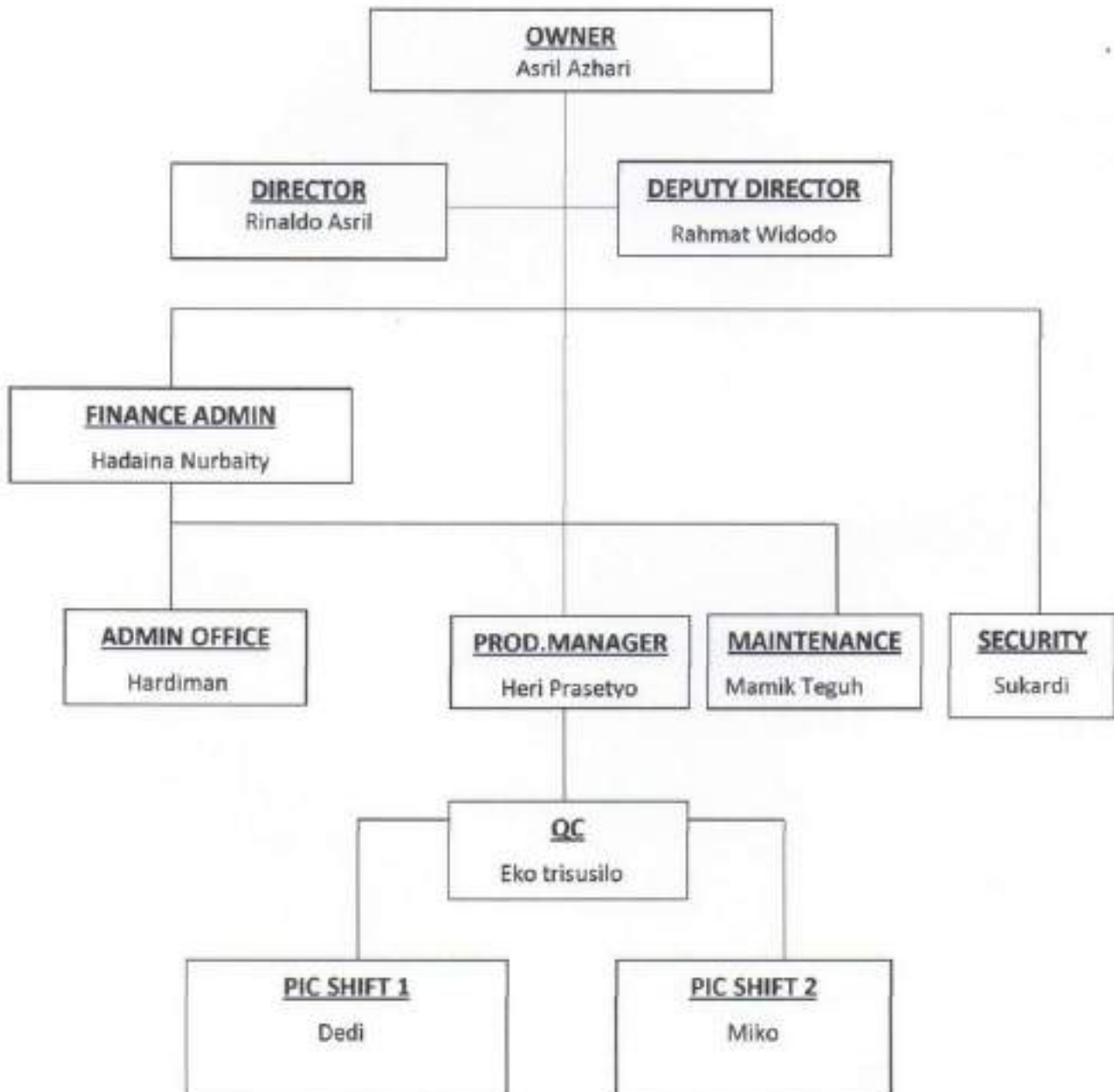
Upon instruction of PT GALAXI SEMESTA JAYA, we did proceed to the hereunder mentioned place for the purpose of conducting survey of the factory and process Charcoal production.

A. Factory Information

1. Date of foundation : January 2018
2. Location : Jl Raya Karang Jati Pringapus KM3, No.1 RT 05 RW 03 Desa Bodean Kelurahan Klepu, Kecamatan. Ungaran Kabupaten Pringapus - 50553. Prov. Jawa Tengah
3. Surface Area : 2000 M²
4. Factory Building Area : 1600 M²
5. Lifting equipment : NONE
6. Fire Extinguisher : 4 Unit
7. Total Number of Workers : 30 Orang
8. Production Capacity : 5 Ton MT/Day
150 Ton MT/Month
9. Total Assets : Rp 2.000.000.000 (Two Billion Rupiah)
10. Insurance : NONE
11. Banker : Bank Central Asia
Account. Account 178 304 5668

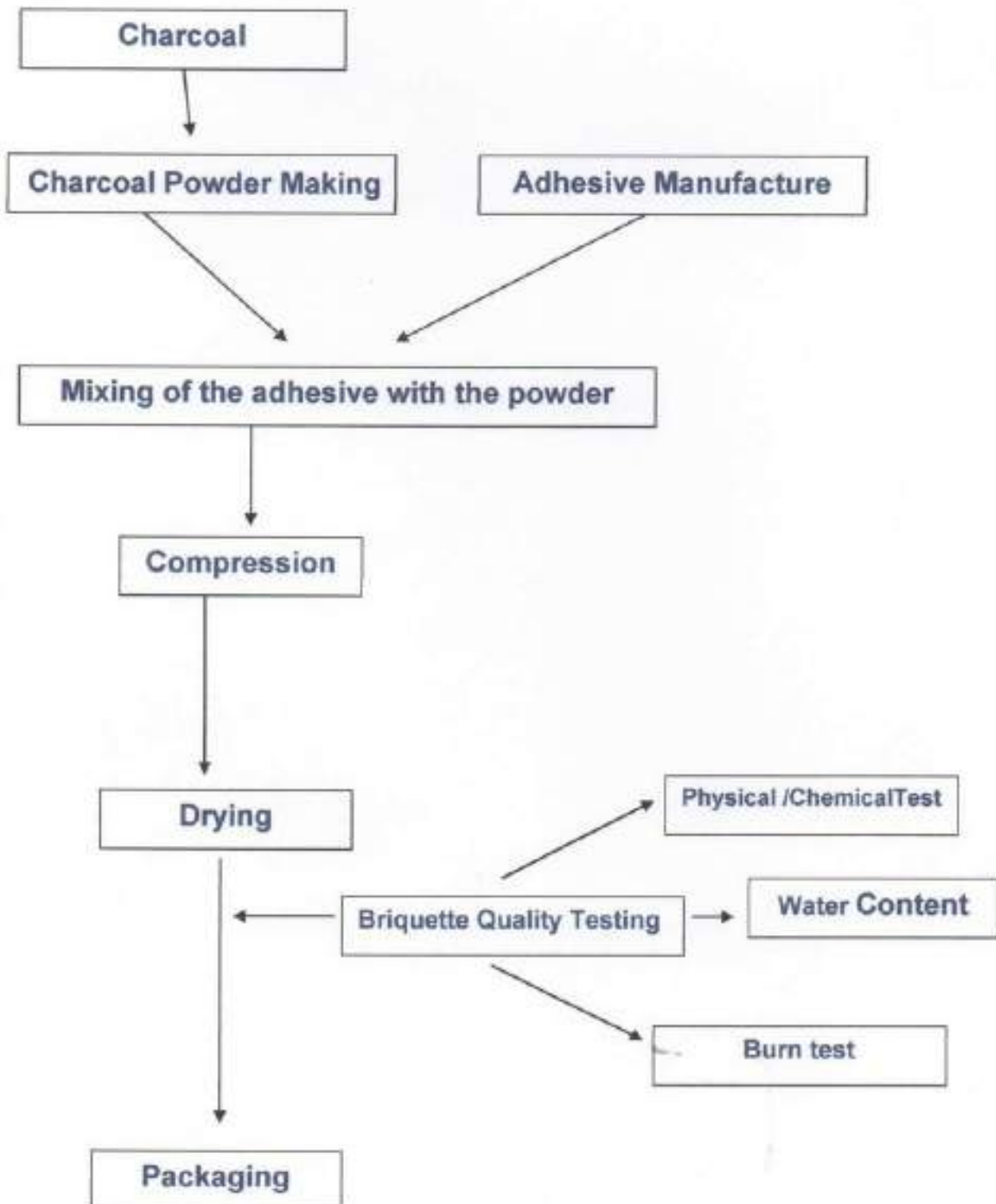


B. Factory Organization





C. Flow Chart Process Production of Coconut Shell Charcoal





D. Production of Process

1. Incoming Material

PT GALAXI SEMESTA JAYA, supplies natural coconut shell charcoal as the main raw material for charcoal suppliers from Java, and Sumatra

Raw materials from Java, Sumatera and Sulawesi are sent by suppliers to factories, and charcoal quality checks for moisture content of not more than 10 upto 12% and ash content of not more than 2,5% are carried out immediately before the raw materials are received.

2. Process of Production

In the Factory PT GALAXI SEMESTA JAYA, the initial step of the production process begins with sieving the shell charcoal, to remove or reduce the ash in the shell charcoal before grinding it.

The next step is that the shell charcoal is sieved and milled so that it becomes charcoal powder before the mixing process.

The next step is the extruded fermented briquettes inserted into the mold machine with the shape and size according to the client's requirement, then cut manually by the carrier and put into the tray to cool for 1-2 hours and then continue in the drying process for 1-2 days.

Then the charcoal powder is put into a mixing machine which is added and mixed with a ratio of 94% charcoal, 6% tapioca flour and enough clean water Then the next process is the mixture of powdered charcoal and tapioca is put into the extruder for 15 minutes, the resulting mixture is structured, so that the ingredients become mixed and more homogeneous. After that the charcoal is mixed, then add enough clean water to mix evenly the briquettes are fermented before printing.

The next step is to put the briquettes in an oven with a capacity of 2,5 MT at a temperature of 40-80 °C for 24 hours, the factory has 3 (three) units of ovens.

The next step is to test the briquette burning on the stove with a temperature of 500-700°C and burns for 8 to 10 minutes to burn into hot coals.

After drying in the briquette oven, it starts to cool for 1 day, then the briquettes are put into a special room to be stored or cooled for 14 days before being packed, after being cooled for 15 days the briquettes are packed in 0.5 kg - 1 kg of plastic after being packed in briquette Inner Plastic then put into the inner carton, after the briquettes are put into the inner carton the briquettes are put into the master carton. After being packed in master cartons, the briquettes are stacked in a storage area ready to be shipped.

So the briquette forecast remains in Finish Good Storage for at least 15 days after coming out of the drying oven and before the vaning process.

3. Storage

PT GALAXI SEMESTA JAYA, has its own storage area for raw materials as well as a production site in a warehouse where the raw material storage space and finished goods storage are well ventilated, and all finished products are placed in cartons. As well as a warehouse for storing finished goods with a capacity of 3 (three) containers, while the factory still has empty land for drying raw materials.

These reflect our findings at the time and place of our intervention only and are excluded without prejudice.

Acknowledged by,

P.T. BECKJORINDO PARYAWEKSANA

Surveyor